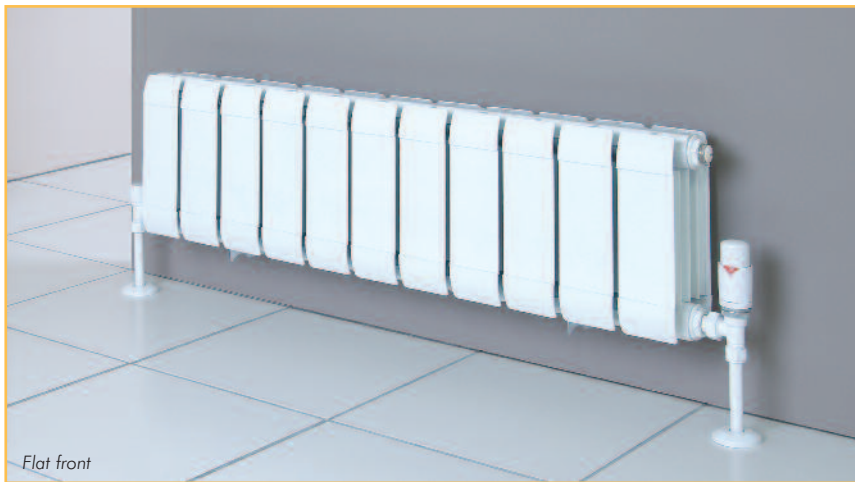


Original FARAL Aluminium Radiators, always appreciated often imitated since 1966

The two styles shown in the range of the FARAL Sill Line extruded aluminium radiators have been designed to provide an attractive solution to very low sill heights while providing the maximum heat output achievable in a small space from one of the smallest yet most energy efficient low water content Aluminium radiators available.

The Faral Sill Line range of Aluminium radiators utilise an otherwise unused wall space, they are very strong and also very light in weight which also provides easy handling and installation, each section of the Faral Sill Line radiator has width of 80mm and a depth of 100mm.

Taking care of the environment is important to Faral, the Sill Line aluminium radiator range goes through our new and exclusive epoxy polyester paint process that provides an extremely strong impact resistant finish, all materials used in the production of the Sill Line range are completely recyclable and not harmful to health or the environment.



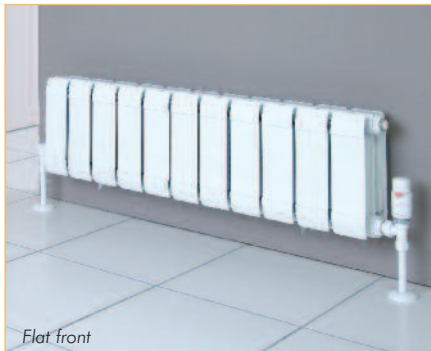
- The maximum operating pressure is 600kpa (10 bar)
- Each of the two styles are available in two heights
- Thermal outputs verified & tested to the European EN442 standards
- 10 year manufacturers warranty
- Standard colour RAL9010
- Ideal for low temperature geothermal and solar systems
- Suitable for all heating boilers including condensing

Low Level Aluminium Radiators

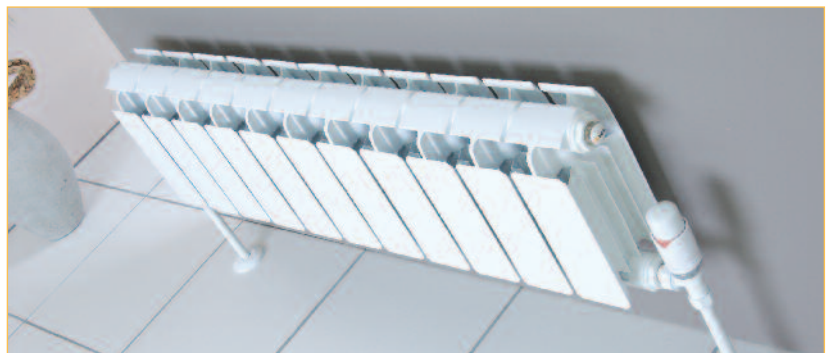
AEL
faral sill line

Technical Data

Model Flat Front	Depth mm	Height mm	Centres mm	Length mm	Connection diameter inches	Water content lt/section	weight kg/section	Heat output EN442 $\Delta T = 50K$ watt/element	Heat output EN442 $\Delta T = 40K$ watt/element	Heat output EN442 $\Delta T = 30K$ watt/element
FF 2-100	100	242	200	80	½" or ¾"	0,15	0,69	59	44	31
FF 3-100	100	392	350	80	½" or ¾"	0,20	0,92	90	66	44



Model Open Top	Depth mm	Height mm	Centres mm	Length mm	Connection diameter inches	Water content lt/section	weight kg/section	Heat output EN442 $\Delta T = 50K$ watt/element	Heat output EN442 $\Delta T = 40K$ watt/element	Heat output EN442 $\Delta T = 30K$ watt/element
OT 2-100	100	245	200	80	½" or ¾"	0,16	0,59	56	43	31
OT 3-100	100	395	350	80	½" or ¾"	0,20	0,77	87	67	58



The White TA8W15 thermostatic valve set, see our comprehensive valve range catalogue.

Radiator Lengths

FARAL radiators are supplied in a maximum length of 15 pre joined sections for ease of transport, each 15 section radiator can quickly have other radiators joined to it on site with two nipples and a joining key, a joining key will pass through an 8 section radiator so for example a 31 section radiator could be supplied as a 15 section with two 8 section radiators.



European Standard EN442 was brought into force to define "heat measurement sampling" for hot water radiators in all European countries, a positive step forward to ensuring radiators tested and approved will provide the stated heat output required and also give a guarantee that the product will be fit for purpose. EN442 provides a guarantee that the stated output of radiators from reputable manufacturers is correct and highlights and deters the use of poor quality untested radiators in European installations.

AEL

HEATING

HEAD OFFICE: 4 Berkeley Court, Manor Park,
Runcorn, Cheshire, WA7 1TQ
Tel: 01928 579068 Fax: 01928 579523
e-mail: sales@aelheating.com

AEL reserve the right to alter designs and specifications without prior notice

Plate Heat Exchanger Packages Gas fired Condensing Boilers Cast Iron Sectional Boilers High Output Tubular Aluminium Steel Radiators Designer Bathroom Radiators Corgi Approved Engineers