

Read this guide before starting installation

Handling Advice

Please refer to the handling guidelines provided with this product. This contains important information about the safe handling of these radiators to minimise risk and damage.

Assembly Advice

Radiators over 15 sections may be supplied in sectional form for ease of handling. If this is the case then please refer to the site assembly instructions supplied separately.

Water Treatment

On completion of any heating installation it is good practice to make sure the entire system is thoroughly cleaned and flushed to remove debris/flux residues etc. After a chemical cleaner is used, it must be thoroughly flushed from the system. Following this, the system should be dosed with a good quality water treatment to prevent corrosion, such as Fernox or Sentinal. Corrosion inhibitor must be used in accordance with the radiator manufacturer's instructions and recommendations and should take into account the particular metals within the system. Please contact AEL for any advice you may need.

Cleaning & Aftercare

The external surface of the radiator should be cleaned with mild detergent. No solvents or abrasives should be used.

Painting

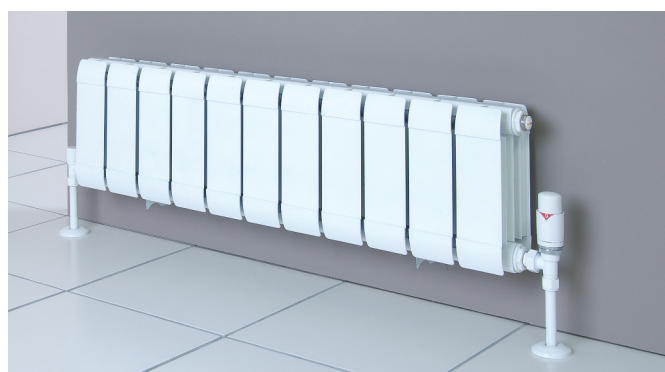
If they were supplied in primer finish they can be covered with a variety of paint types including water-based, oil-based, cellulose, 2-pack acrylic and stove enamel. These radiators may have been supplied factory painted in your choice of colour. If so, no further painting or surface treatment is necessary or recommended. Always consult the paint manufacturer's instructions.

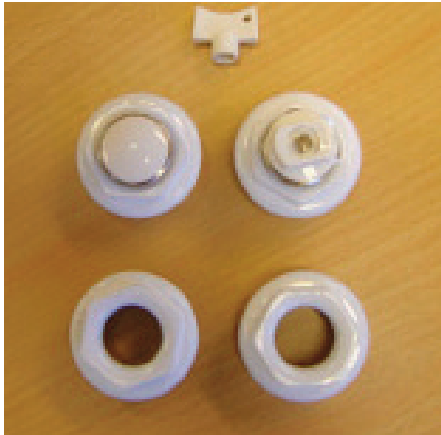
Operating Pressure

These radiators are designed to operate at a system maximum pressure of 6 bar. Do not pressure test with air as the gaskets are designed for water systems.

Warranty & further information

These radiators have been designed, manufactured and tested to ensure long-lasting use. They are guaranteed to be free from material and manufacturing defects for 5 years from date of purchase. Should you require any further information, help or advice about any aspect of installing and maintaining these radiators, please contact our office.





Bushes & Washers

Each radiator is supplied with a bush & washers for each of the 4 connections.

- A** Two 1/2" or 3/4" BSP threaded bushes & washers for connecting radiator valves
- B** One bush and washer for their vent
- C** One blank bush & washer

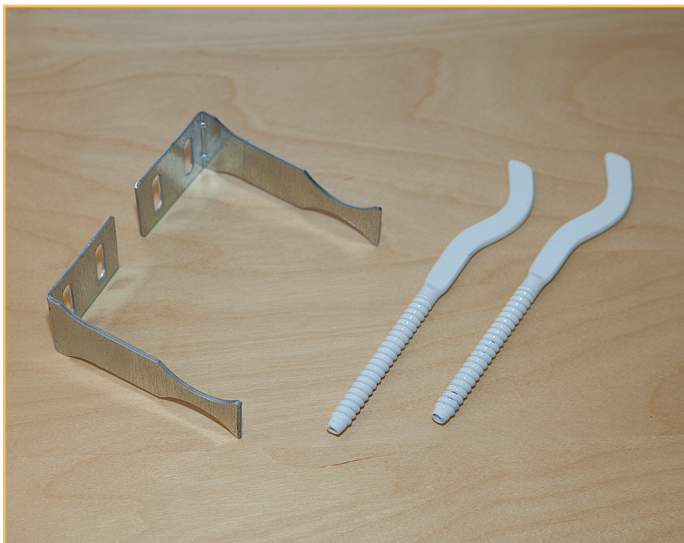
The bushes and brackets are supplied in a blister pack and must be fitted to the radiators before installing.

NB: 2 of the 4 bushes have left-handed threads and must only be fitted to the appropriate ports.

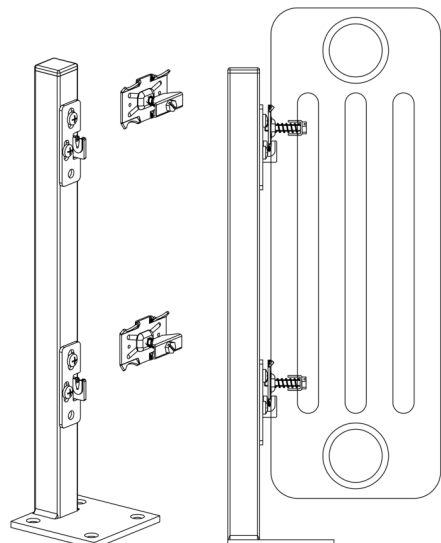
Use only the sealing rings supplied for sealing the bushes, air vents and plugs.

No thread sealant paste or tape may be used on the thread or bush which mates into the radiator. When fitting radiator valves to the left-hand threaded bushes; hold the bushes firmly with a spanner. This will ensure that the bushes are not allowed to rotate and become loosened., thereby preventing the risk of leaking.

It is recommended that the threaded tail pieces of radiator valves or other pipe fittings that are screwed into the bushes are sealed with PTFE thread sealing tape. Sealing compound can also be used but great care must be taken to ensure that the sealing compound makes no contact with any of the sealing rings.



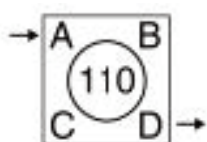
Wall brackets, supporting top and bottom (standard option).



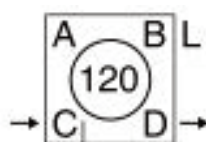
Floor mounted with retaining stays (optional extra).

Connection Details

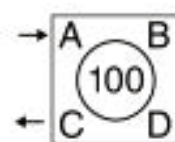
The radiator can be installed with the following connection (inlet & outlet) configurations, referred to by the codes indicated below.



Top-Bottom-
Opposite-Ends
TBOE



Bottom-Bottom
Opposite-Ends
BBOE



Top-Bottom-
Same-Ends
TBSE

Note: The radiators are not reversible from top to bottom. Only the Longo is provided with a diverter which must be fitted, you push this between the 1st & 2nd section on the flow into the bottom of the radiator.