



Avon Barrier

Avon RB680 Road Blocker



The **Avon RB680 Road Blocker** comes in a variety of widths to suit specific site requirements, with a blocking segment height of 350mm and provides an effective method of securely controlling vehicle access to restricted area.

The blocker is constructed from heavy welded steel section to provide sufficient strength to exceed British axle loads.

The heavy duty durbar top plate is coated with safety markings, with removable access covers to enable efficient installation and servicing.

The blocker is operated by a hydraulic ram with the power unit (HPU) positioned locally within an externally rated cabinet. The blocker mechanism is encased in a sheet steel enclosure and has access points for onward connection to ducting for hydraulic hoses and control cables.

On installation the entire enclosure is encased by concrete with construction being subject to site ground conditions.

The power requirement is dependent upon the duty cycling requirement, number and size of blockers to be driven by the power pack.

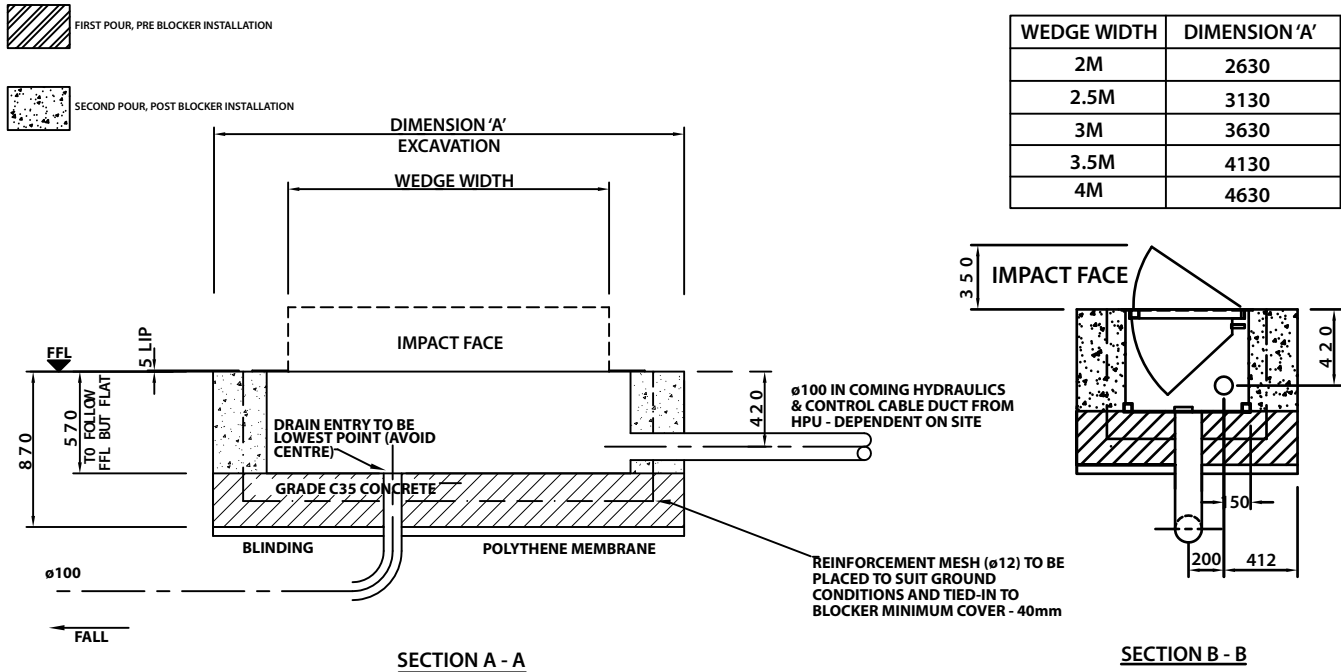
Features

- Vandal resistant
- Constructed to comply with BS6571 part 4 Grade A
- High quality coating system
- Manual hand pump facility
- 3 Phase 50Hz supply 415V

Benefits

- Reliability
- Durability
- Service spares
- Ease of installation
- Manual operation in the event of power failure

Technical Specification RB680 Road Blocker



Technical Details

Physical Dimensions:	2m Blocker - 2150mm Wx 735mm D x 570mm H (350mm H raised)
Basic Power Requirements:	3-Phase 415VAC, 50Hz, 20 Amps (Single Phase and other voltages are available)
Control Voltage:	S.E.L.V 24v
Performance:	Loading - 20 Tonnes
Speed of Operation:	6-8 Seconds to raise or lower
Operating temperature range available:	-25°C - +70°C (Option)
Construction:	The supporting framework is constructed from fully welded, heavy gauge, structural steel completely encased with steel sheets to provide a self-shuttered module. Sub-surface fixing points ensure the blocker is completely secured to its foundation.

Options Available

The blocker comes with a push-button control as standard, however it can be customised to interface with a wide range of access control equipment to suit specific customer requirements (available as options) and any configuration including (but not limited to) inductive loop systems, card readers, communication equipment and manned guard emergency systems can be accommodated.

For safety reasons pedestrians, cyclists and motorcycles are advised not to use a blocker controlled roadway, additional safety measures can be incorporated into the blocker system if required. Where the blocker control point is remote from the installation, we strongly recommend the fitting of a recordable CCTV system, traffic lights and safety inductive loop systems.

- Access control and intercom systems
- Stop / No Entry warning signs
- Inductive loop systems
- Emergency buttons with lock down
- Accumulator systems for hydraulic operation
- Traffic lights and back-indications systems
- UPS backup for the electrical system
- Integral inset warning lights in blocking segment



Avon Barrier Corporation Ltd
149 South Liberty Lane
Ashton Vale Trading Estate
Bristol BS3 2TL
United Kingdom

Tel +44 (0) 117 953 5252
Fax +44 (0) 117 953 5373
Email sales@avon-barrier.co.uk
www.avon-barrier.co.uk
www.avon-barrier.com

Avon Barrier reserve the right to change or amend the specification of its products from time to time in furtherance of its policy of continued improvements.

Ref Avon RB680 Road Blocker version 2.7.14

