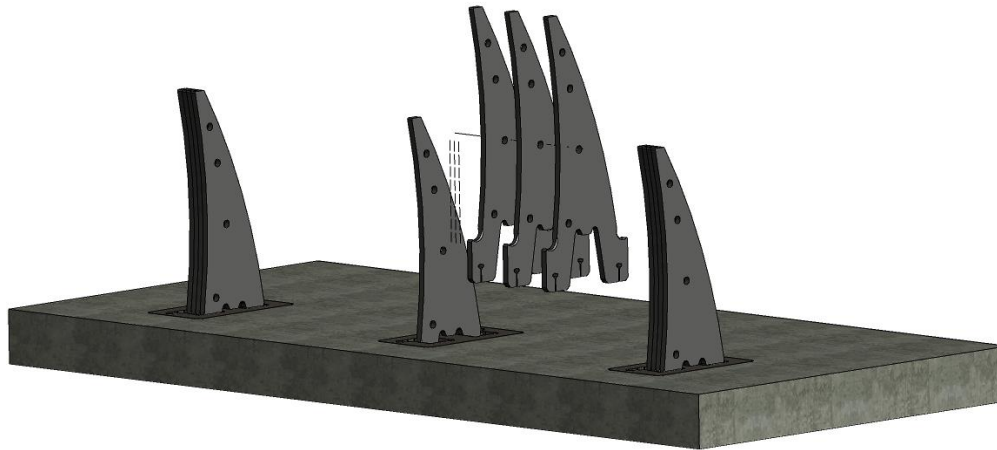


---

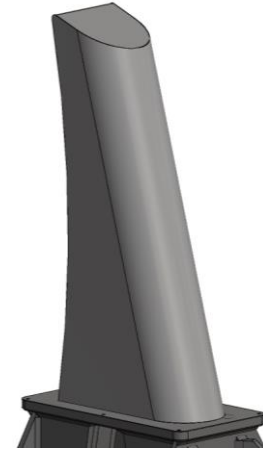
## Technical Data Sheet

---

**Triple bollard unit with foundation**



**Bollard with stainless steel shroud**



<b>Design:</b>	removable blocking bollard(s) with blocking elements in layered construction, mounted in an underground housing for installation with shallow foundation
<b>Kinetic Impact Energy:</b>	1778 kJ (7.2 t @ 80 km/h)
<b>Certification:</b>	crash test certified according to IWA 14-1:2013 V/7200[N2A]/80/90:4.3 (triple unit)
<b>Blocking Elements:</b>	4 pcs. laser cuttings with base for insertion into underground housing, 25 mm sheet thickness
<b>Foundation Depth:</b>	220 mm (shallow foundation)
<b>Blocking Width:</b>	100 mm
<b>Blocking Height:</b>	900 mm
<b>Foundation Size:</b>	3900 x 1750 mm (triple unit)
<b>Weight:</b>	approx. 45 kg per blocking element approx. 325 kg per bollard
<b>Options:</b>	100 mm lowered foundation, warning strip red/white - 20x400 mm - VZ 600 - RA2/B, project-specific adaptation of blocking element, stainless steel shroud, complementation with accessory components for street furniture solutions
<b>Colour Blocking Element:</b>	<b>Standard:</b> RAL 7016 anthracite grey or RAL 7035 light grey <b>Optional:</b> other RAL colours or DB colours as well as colour combinations