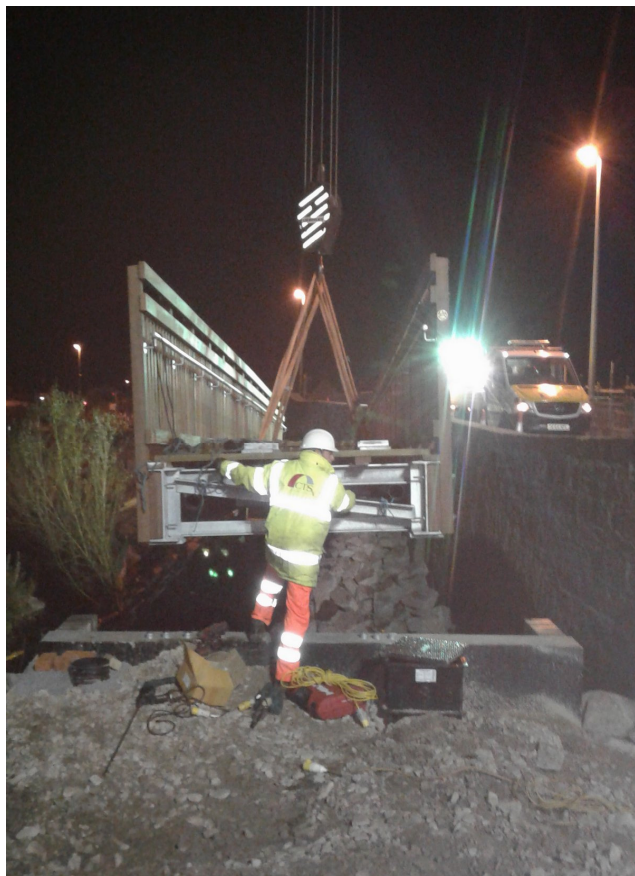


## Case Study—Night time Install of bridge in Highlands



**Client:** Bear Scotland—Ref 4281

**Location:** A95 Cromdale, Strathspey, Highlands, Scotland

**Length:** 18.0m

**Width:** 2.0m

**Form:** Steel beams with hardwood deck and parapet

### Project Description

The A95 'Whiskey Road' was closed overnight during a weekend for CTS to carry out the installation of a new 18m x 2m Steel and Timber Footbridge near the village of Cromdale, Strathspey in the Highlands of Scotland.

The A95 was closed overnight from 11pm on the Saturday until 6am the following day so the crane could stand on the centre of the carriageway to lower the bridge over the wall at the side of the road onto the newly formed abutments.

The new timber and steel bridge replaced an old worn out structure that was in need of repair. The new wider structure allows easier access by wheelchairs, mobility scooters, pushchairs and cyclists.

This style of bridge is a very low maintenance, durable and aesthetically pleasing style. It comprises galvanised steel beams combined with Ekki hardwood for the deck and parapet. The parapet style is a Type A comprising vertical infills set at a max 110mm spacing. It also has an additional stainless steel handrail to assist disabled users. The hardwood deck has the Hi-Grip Excel non-slip inserts to ensure good grip for all users.



Top Photograph: Night time weekend installation on A95

Second Photograph: Bridge delivered on Articulated Extender

Third Photograph: Bridge installed onto new abutments