



Delta Balustrades

EXPERTISE YOU CAN LEAN ON

ORBIS

ORBIS

For a clean and graceful balustrade system, the Orbis system is your first choice. Crafted from stainless steel or mild steel tubing, this system is ideal for a huge variety of applications, wherever low maintenance and high functionality is required.

The Orbis range is produced in 3 different designs to accommodate any situation:

50 Series:

50mm diameter tubing suitable for medium loading applications.

60 Series:

60mm diameter tubing suitable for medium to high loading applications.

70 Series:

70mm diameter tubing suitable for high loading applications, such as crowd control.

Delta Balustrades are committed to innovation in product design and maintains a forward thinking approach to sustainability and the environment. Images throughout this product guide are to illustrate typical details and installed products, therefore styles and applications may vary from current standard designs. Contact Delta Balustrades technical team to confirm any specific details.

CE ACCREDITED

Delta Balustrades Ltd are fully compliant with what is now required in the Construction Product Regulations 2011 (CPR), having recently been accredited as compliant with the harmonised standard covering structural steelwork in BS EN 1090-1 (Execution class 2). A Declaration of Performance Certificate can be produced for each installation.

Our reason for investing in this accreditation is not just to comply with legislation, but rather understanding our duty of care for our customers and other building users.

At Delta Balustrades we believe that any structural balustrade installation should be carried out by a company that is fully compliant with the BS EN 1090-1 standard and that operates a Factory Production Control (FPC) system to ensure structural integrity, quality and traceability of all components and services.



BALUSTRADE INFILLS



BALUSTRADE INFILLS

We constantly upgrade and expand upon our infill options to give our customers a wealth of choice. Glass, tensioned wire, steel panels, midrails and vertical bars are all available, and each can be customised to suit your particular needs in terms of aesthetics and purpose.

GLASS

Delta Balustrades offer far more than simple glass panels. Our glass infill systems combine strength and visual stimulation to enhance any staircase or balcony. We can create dramatic effects using an infinite combination of coloured tints, variable thickness and etched glass, while conforming to all the relevant safety regulations.

Glass Fixings

Delta Balustrades glass fixing are all bolted through to comply with BS6180. These fixings securely hold the glass infill panel with a bolt connection unlike compression clips or clamp lug components.

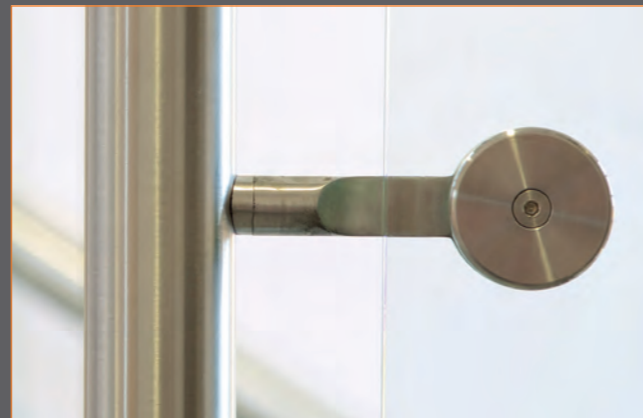
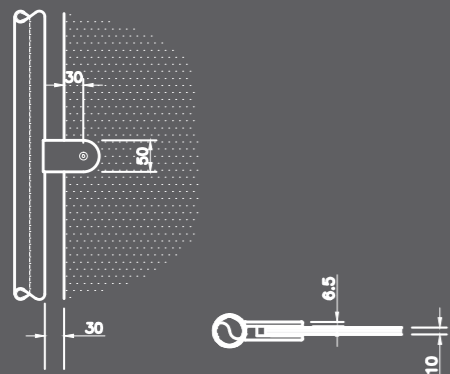
Glass Types

For the Orbis range, 10mm toughened glass is proposed as standard. However, toughened glass should be specified only when its inherent characteristics are understood and accepted. In high risk areas, heat-soaking glass panels and / or toughened laminated glass should be considered. This is normally two pieces of glass bonded together by a special interlayer. If broken, the glass is retained by the interlayer and as well supported in the Orbis balustrade it has an increased likelihood of staying in place.

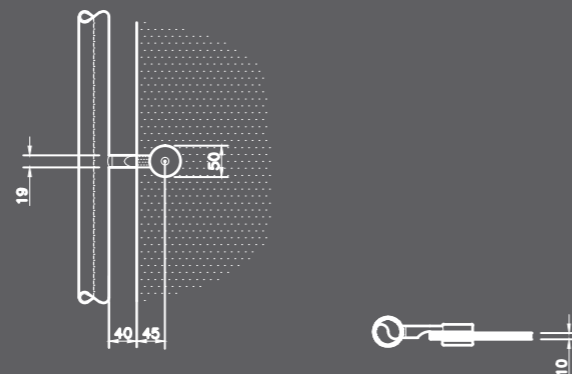
PANEL FIXING OPTIONS



'D' Lug Glass Fitting (L3)



Banjo Glass Fitting (L4)



BALUSTRADE INFILLS



Perforated Panels

Perforated Panels

The Delta Balustrade panel system has a variety of applications perfectly suited to a multitude of situations. Maintenance-free and incredibly sturdy, they are appropriate for public use and are fully compliant for this application.

Looking for something vibrant or a specialist look? Choose from hundreds of RAL, BS4800 and BS381C colours to contrast with your environment perfectly.

Mesh Panels

Mesh infill panels are available in countless colours and are securely welded into frames for stiffness, making them ideal for guarding and for heavy-use public areas.

Vertical Bar Panels

The popular vertical bar panel system provides a cost effective and robust option designed for utility areas and rear stairs. Using the latest technology and innovation, the manufacturing process focuses on maximum efficiency, reducing costs and decreased impact on the environment. The vertical bar panel is a maintenance free and fully compliant infill well suited to all public buildings.



Vertical Bar Panels

Horizontal Midrails

To increase the strength of any stairwell, Delta Balustrades has produced a cost-effective midrail system, often the preferred choice for commercial office and other non-public applications.

Integrating the midrails by flowing them through the balusters, it forms a continuous line effect throughout the entire balustrade.



Horizontal Midrails

Tensioned Wires

Our tensioned stainless steel wire midrail system is proving to be increasingly popular, thanks to its stunning appearance and ease of maintenance.

The neat 5mm wires can be paired with any of our balustrade systems to provide a modern and engaging appearance for any commercial or non-public application.



Tensioned Wires

HANDRAIL OPTIONS



HANDRAIL OPTIONS

The tactile nature of a handrail can add so much to a balustrade, how it feels can be as important as how it looks. As with our infills, handrails can be customised to suit your particular needs in terms of aesthetics and purpose. Our range leads the way in design, engineering and flexibility, giving you the choice to accomplish beauty within your budget.

DelamereXTM

The DelamereXTM hardwood effect handrail system requires no varnishing or maintenance, offers a cost-effective alternative to hardwood, and helps our customers actively reduce their carbon footprint, sustaining valuable timber resources.

DelamereTM

The DelamereTM range of quality lacquered hardwood handrails is available as standard in oak, ash, cherry, maple and walnut, and other prestige hardwoods are available on request.

HiBuildTM

The HiBuildTM colour polyester coated system has it all: advanced scratch resistance, a comfortable grip, and the all-important "warm to the touch" DDA requirement.

HiBexTM

The HiBexTM colour polyester coated system has all the features of the HiBuildTM range and is designed specifically for external applications.

HiMetTM

HiMetTM coated systems are fashioned in several metallic finishes, including silver, gold and nickel, and are a warm-to-the-touch alternative to stainless steel.

HiMexTM

The HiMexTM metallic polyester coated system has all the features of the HiMetTM range and is designed specifically for external applications.

nDuraTM

nDuraTM is a unique clear top coating ideal for handrails in areas of heavy pedestrian traffic, due to its high resistance to damage. nDuraTM is the ultimate in meeting warm-to-the-touch requirements and anti-graffiti, anti-bacterial and class 1 fire rated are included in its wide range of resistant properties.

UltraTM

UltraTM 304 grade stainless steel with external grade finish specifically designed for outdoor applications.

SigmaTM

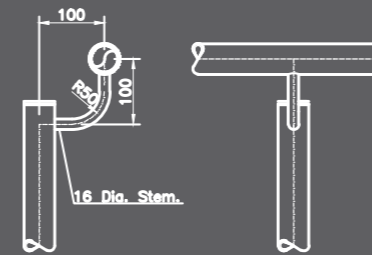
SigmaTM satin polished 304 grade stainless steel is designed specifically to withstand decades of very heavy usage in the most demanding of internal environments.

LustreTM

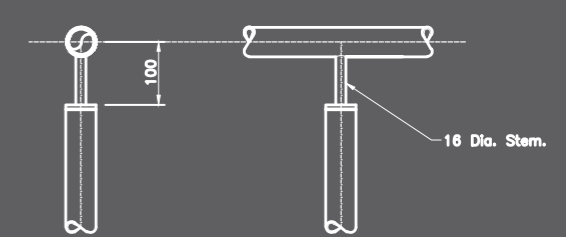
Our exclusive LustreTM finish features a 316 grade stainless steel with bright polished surface, ideal for use in swimming pool areas and marine environments.



Offset Radius (BB3)

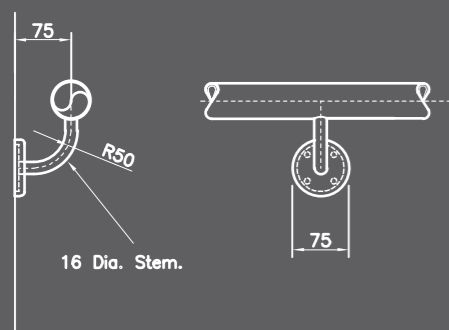


Inline Stem Connection (BB6)

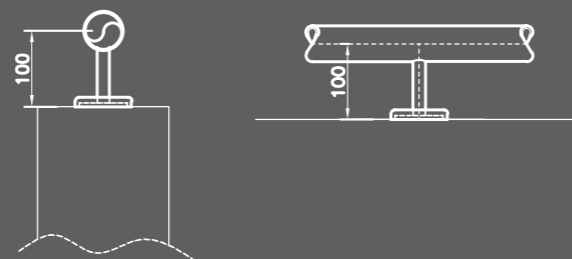


BRACKET OPTIONS

Radiused Wall Bracket (WB3)



Top Fix Wall Handrail (WB6)



HiBexTM

HANDRAIL OPTIONS



Lock out the dirt with nTechnology®

Delta Balustrades 'nTechnology' is a specially formulated treatment applied inhouse to stainless steel products. This treatment protects the surface of the metal, and consequently offers considerable reductions in cleaning time and costs.

Stainless Steel traditionally requires a relatively high level of maintenance, especially considering the common misconception that it is stain-free. In fact, the surface of stainless steel is prone to collecting deposits of chlorides, which in turn etch the base material and produce what is known as tea-staining.

'nTechnology' considerably reduces the adhesion that chlorides have to the surface, and therefore reduces the cleaning requirements of the finished product.

Regular cleaning is still required, but far fewer chemicals are needed to achieve a pristine finish. In fact, less water is also required to achieve the same results.



Sigma™

TECHNICAL SPECIFICATION

Delta Balustrades Orbis system is designed, manufactured and installed to suit your individual application. A wide range of finishes, infill options and additional features are available and are fully compatible with the Orbis system.

SPECIFICATION GUIDE

1. Choose handrail series and handrail finish (see page 12 & 15)
2. Choose handrail bracket type (see page 12 & 13)
3. Choose ORBIS tubular baluster. Typical sizes for standard loading requirements: 50 Series at 1100mm centres
4. Choose guarding and infill panel lugs as required (see page 6-9)
5. Choose balustrade fixing detail from standard options (see pages 18 & 19) or detail to be confirmed with Delta Balustrades
6. Specify horizontal loading as indicated by architect or building control. i.e. 0.74kN/m, 1.5kN/m or 3.0kN/m
7. Specify associated wall fixed handrails if required

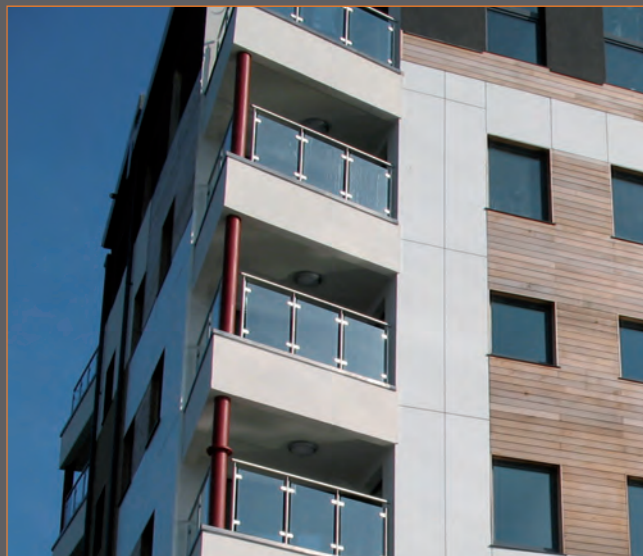
HANDRAIL SIZES

40 Series

50 Series

60 Series*

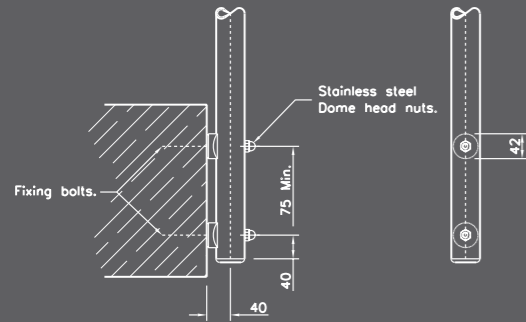
*(not compliant for stairs and ramps due to British Standard guidance on handrail size)



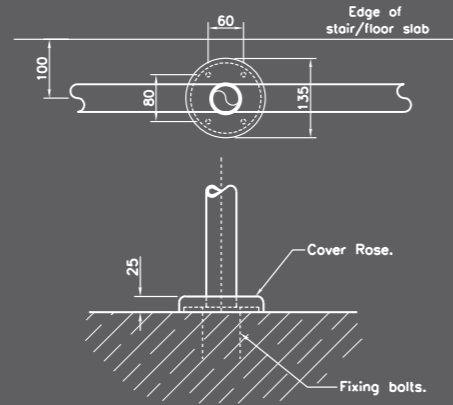
TECHNICAL SPECIFICATION

BALUSTER FIXING OPTIONS

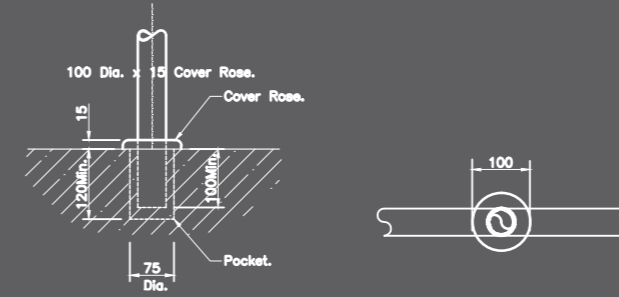
Standard Side Fixing (SF1)



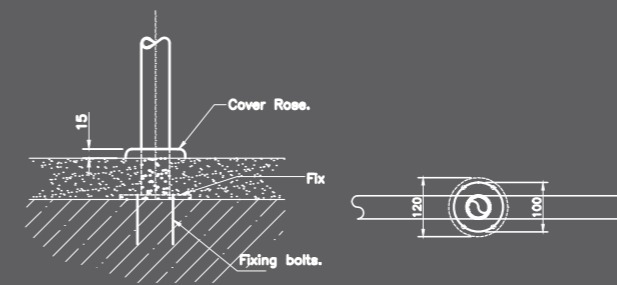
Standard Top Fixing (TF1)



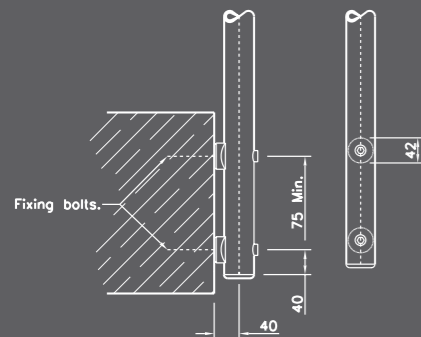
Top Fixing - Grout Fix (TF2)



Top Fixing - Screed Fix (TF3)



Slimline Side Fixing (SF3)

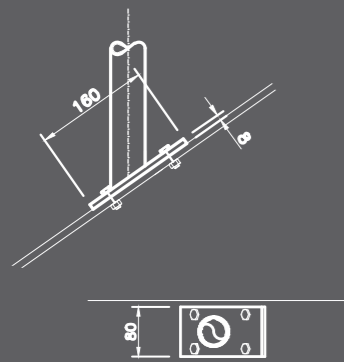


TF1



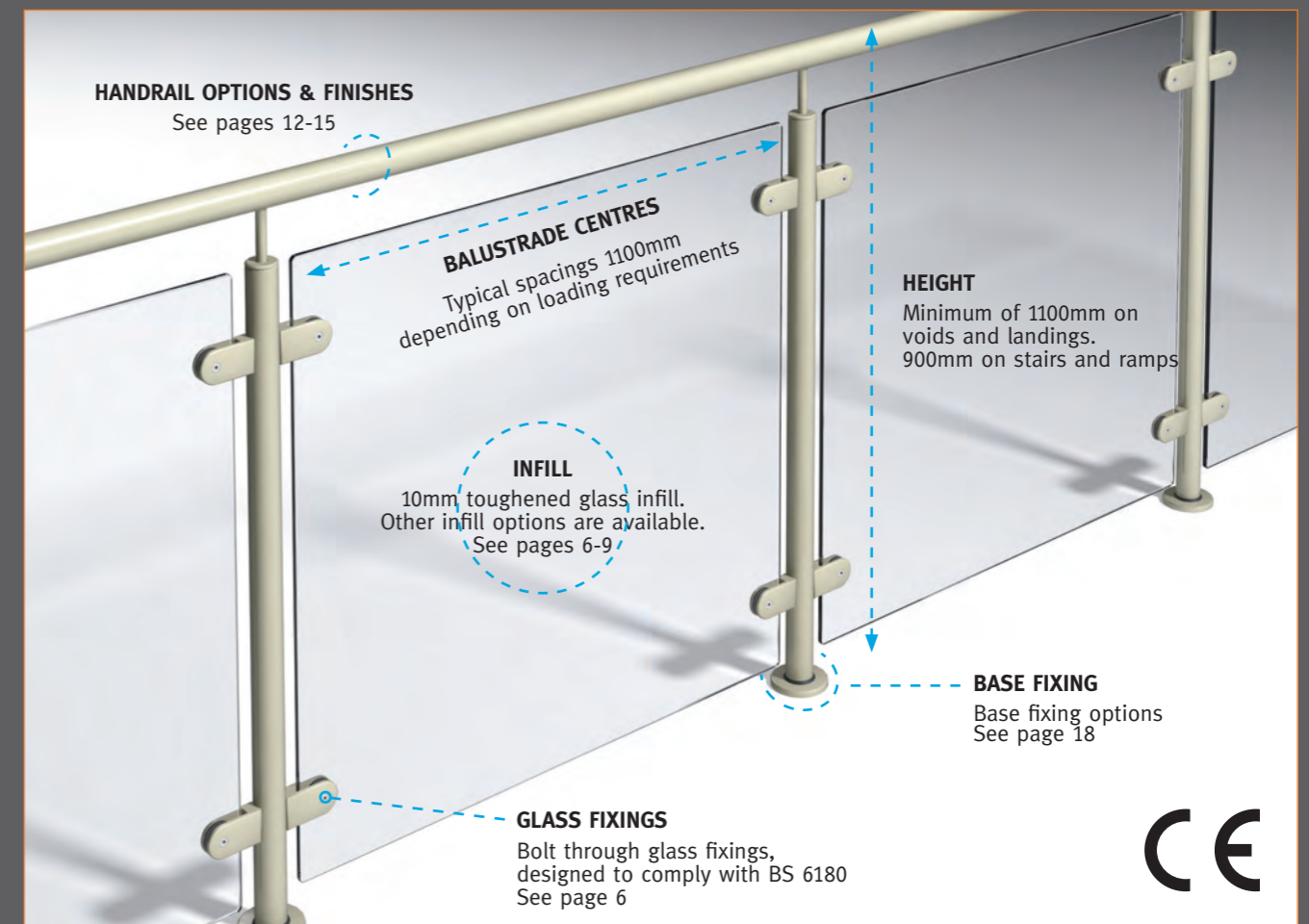
SF3

Top Fixing - Stair Stringer Fix (TF4)



TF4

OUR STANDARD SPECIFICATION



GLASS FIXINGS
Bolt through glass fixings,
designed to comply with BS 6180
See page 6





Delta Balustrades

EXPERTISE YOU CAN LEAN ON

Delta Balustrades Ltd, Millbuck Way,
Sandbach, Cheshire CW11 3JA

Tel: 01270 753 383 Fax: 01270 753 207

info@deltabalustrades.com

www.deltabalustrades.com