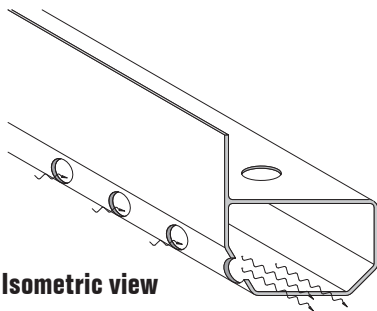


## DRAINAGE CHANNEL & FITTINGS

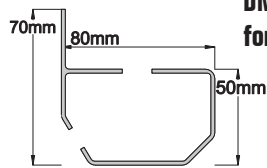
### Channel



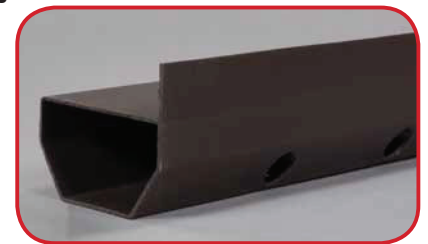
**DMS208 (No upstand)**  
for off-wall or across floor applications



Isometric view



Section through channel



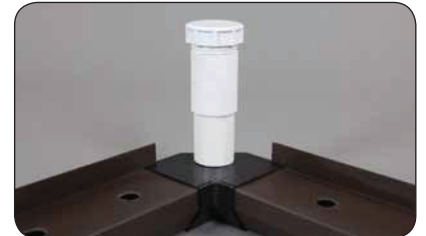
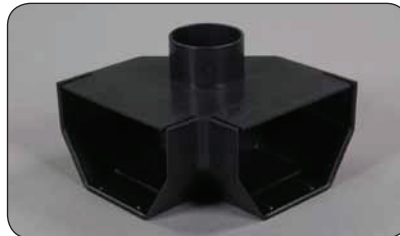
**DMS207 (With upstand)**  
for perimeter walls

### Fittings

The system also comes with four different connectors, which compliment the system and make it quick and easy to install. These are push-fit but can be solvent welded if required

#### DMS182 - Corner Connector

This fits internal and external corners to channel lengths and has a push-out eye for a jetting port APU (DMS094).

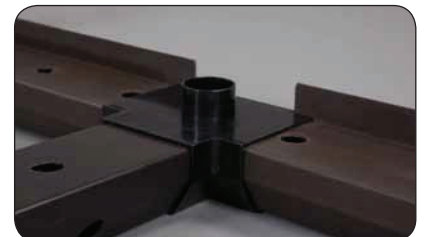


#### DMS310 - Straight Connector

This connector fits channel lengths together.



#### DMS183 - 'T' Piece Connector



## DMS184 - End Cap

These are used to blank off ends of channel runs. They are also used to reduce the discharge to 40mm diameter before entering the sump.

This is done with standard Plumbing pipe, which is solvent welded onto the adaptor.



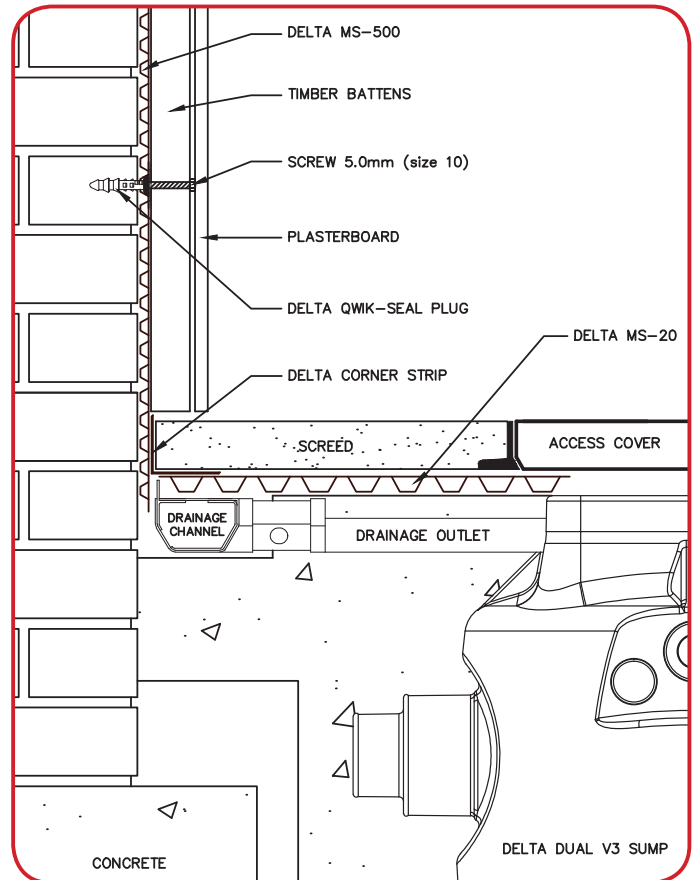
## DMS094 - Jetting Eyes

Jetting Eyes can be installed onto the easy push out connectors using solvent weld.

These are used for easy access maintenance of the channels by water jetting any blockages.



Typical 'Perimeter Channel' installation



Typical installation showing interface between pump chamber and drainage channel