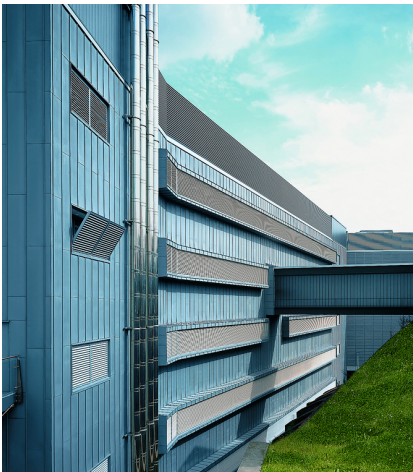




DIGBETH MILLENNIUM POINT

Birmingham, Great Britain



BAUHERR/CLIENT

Galliford (Midlands) Ltd.
Leicestershire, Great Britain

AUSFÜHRENDER ARCHITEKT/SUPERVISING ARCHITECT

Mason Richards Partnership
Birmingham, Great Britain

PLANENDER ARCHITEKT/DESIGN ARCHITECT

Grimshaw & Partners
London, Great Britain

AUSFÜHRUNG DER RHEINZINK-ARBEITEN/ROOFING/SHEET METAL CONTRACTOR

Richardson Roofing Company Ltd.
Staines, United Kingdom
CGL Cometec Ltd.
Glasgow, Great Britain

TECHNISCHE DATEN/TECHNICAL DATA

Fassade: 3000 m², 40 t, Kassettensystem, Winkelstehfalzsystem
RHEINZINK-„vorbewittert^{PRO} blaugrau“

Façade: 3000 m², 40 t, Angled Standing Seam System, Cassette System
RHEINZINK-„preweathered^{PRO} blue-grey“