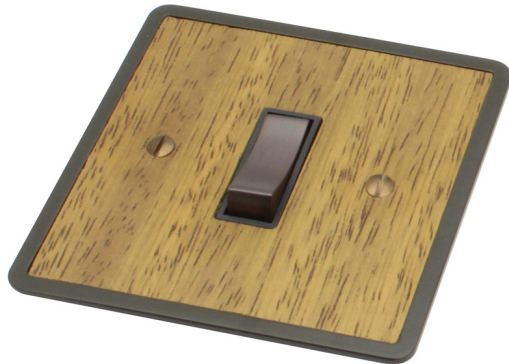




# Arbor Range

# Electrical Accessories

## Specification Document – Series 2 and 5



**Series 2** features a slim plate with visible fixings.

**Series 5** features concealed fixings.

Two new additional “series” of plates have been introduced to our Arbor range of electrical accessories.

Series 2 features a slim plate with visible fixings, whereas Series 5 has concealed fixings.

All of these accessories feature real wood veneered centre panels with solid brass plates and surrounds.

There are 13 varieties of wood veneers to choose from, and 13 different finishes can be applied to the brass plates and surrounds.

(To see all of these combinations, please see our ‘Arbor Range’ catalogue download).

All of the inserts are British made, so our products not only look good, they are reliable.

Apart from our wide range of standard products, we can make special items to a specified design, so we can supply all the necessary accessories throughout a whole project.

These Arbor electrical accessories complement our comprehensive range of door, window and cabinet fittings. This gives designers and architects the opportunity to use the Arbor concept throughout a complete scheme.

We are continually adding to our Arbor range of electrical accessories, so please refer to our web site for the latest information.

**Series 3** See our Classic Range - **Series 4** See our Classic Range

### Contents

<b>Series 2</b>		<b>Series 5</b>	
Introduction	2	Introduction	12
Rocker Grid & Architrave Switches	3	Rocker Grid Switches	13
Dolly Grid Switches	4	Dolly Grid Switches	14
Dimmer Switches	5	Dimmer Switches	15
Socket Outlets	6	Socket Outlets	16
Television & Telephone Outlets	7	Television & Telephone Outlets	17
Fused Connection Outlets	8	Fused Connection Outlets	18
Cooker Switches & Blank Plates	9	Cooker Switches & Blank Plates	19
Euro Module Plates & AV Modules	10	Euro Module Plates & AV Modules	20
Miscellaneous	11	Miscellaneous	21



#### Series 2 Introduction

These plates are really slim, with a thickness of only 2mm and have visible fixings.

#### Dimensions

Square plate dimensions 86x86mm

Rectangular plate dimensions 146x86mm

Projection of plate 2mm

#### Wall box

Depth of wall box required is 35mm, with the exception of:-

6 gang rocker grid, 133x133x40mm deep

Architrave switches,  
1 gang fits Wandsworth 1715 wall box

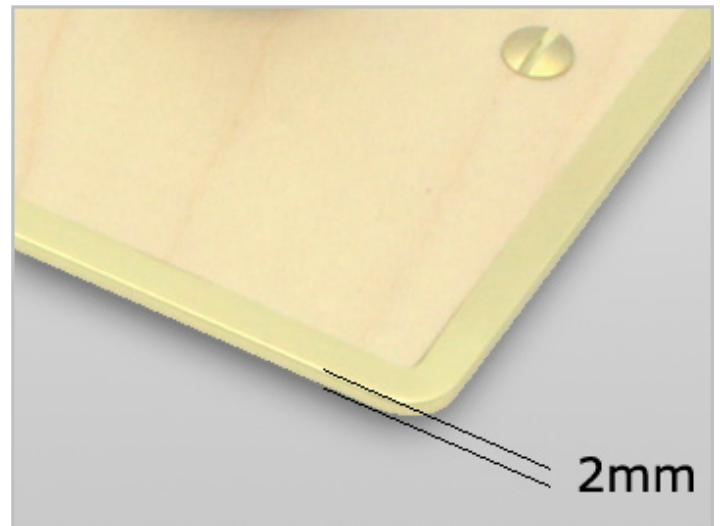
Architrave switches,  
2 gang fits Wandsworth 1716 wall box

Fused connection units, 47mm

Blank plates, 25mm

Shaver socket, 47mm

*Not suitable for dry lining wall boxes*



#### Rocker Grid Switches



**81201** 1 Gang 20 AMP 2 way switch



**81211** 1 Gang 20 AMP intermediate switch



**81202** 2 Gang 20 AMP 2 way switches



**81203** 3 Gang 20 AMP 2 way switches



**81204** 4 Gang 20 AMP 2 way switches



**81206** 6 Gang 20 AMP 2 way switches



#### Architrave Switches



**83201** 1 Gang 20 AMP 2 way switch

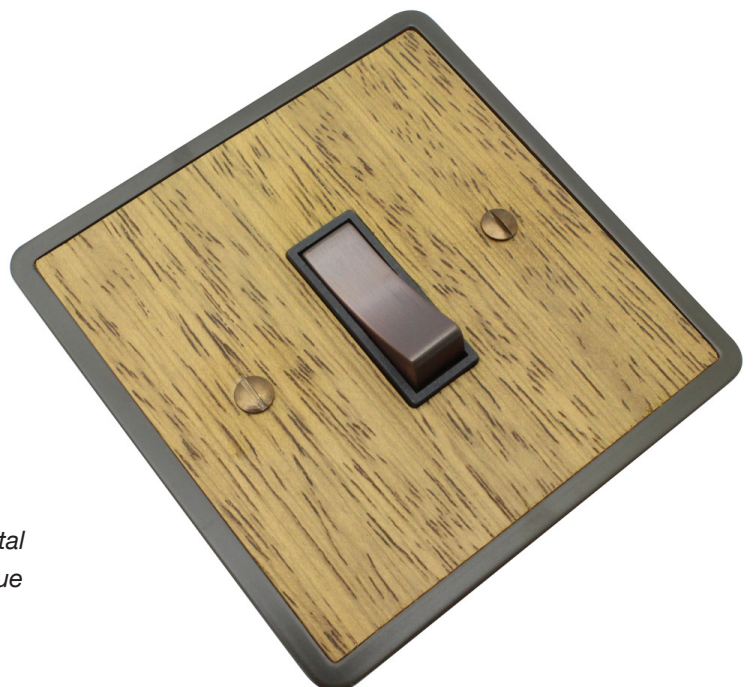


**83202** 2 Gang 20 AMP 2 way switches



The metal switches are available in these combinations of finishes and plastic inserts. (Also available are plastic switches in either black or white).

SWITCH FINISH	INSERT COLOUR	
	BLACK	WHITE
Polished brass	✓	✓
Satin brass	✓	✓
Polished chrome	✓	✓
Satin chrome	✓	✓
Polished nickel	✓	✓
Satin nickel	✓	✓
Antique bronze	✓	



**81201** iroko with imitation bronze metal antique finished plate. Switch is antique bronze. Insert is black.



#### Dolly Grid Switches



**82201** 1 Gang 20 AMP 2 way toggle switch



**82211** 1 Gang 20 AMP intermediate toggle switch



**82202** 2 Gang 20 AMP 2 way toggle switches



**82203** 3 Gang 20 AMP 2 way toggle switches



**82204** 4 Gang 20 AMP 2 way toggle switches



The switches are available in the following finishes:-

Polished brass

Satin brass

Polished chrome

Satin chrome

Polished nickel

Satin nickel

Antique bronze



**82202** dark oak with polished chrome finished plate. Switches are polished chrome.

#### Dimmer Switches



**85201** 1 Gang 250W 2 way dimmer  
(mains and low voltage)



**85202** 2 Gang 250W 2 way dimmer  
(mains and low voltage)



**85203** 3 Gang 250W 2 way dimmer  
(mains and low voltage)



**85204** 4 Gang 250W 2 way dimmer  
(mains and low voltage)



**85211** 1 Gang 400W 2 way dimmer  
(see note)



**85212** 2 Gang 400W 2 way dimmer  
(see note)



**85221** 1 Gang 700W LV / 1000W Mains dimmer



**85231** 1 Gang 700W LV / 1000W Mains dimmer



**85241** 1 Gang 500W 1 way touch dimmer



**85211** and **85212** can be used on mains, low voltage, dimmerable compact fluorescent and dimmerable LED

Note: The control knobs are only available in the following finishes:-

Polished brass

Satin brass

Polished chrome

Satin chrome

Polished nickel

Satin nickel

Antique brass

Imitation bronze metal antique.

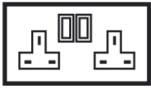


**85203** maple with polished brass plate.  
Control knobs are polished brass.

#### Switched Socket Outlets



**84201** 1 Gang 13 AMP Switched socket outlet



**84202** 2 Gang 13 AMP Switched socket outlet

The metal switches are available in these combinations of finishes and plastic inserts. (Also available are plastic switches in either black or white).

SWITCH FINISH	INSERT COLOUR	
	BLACK	WHITE
Polished brass	✓	✓
Satin brass	✓	✓
Polished chrome	✓	✓
Satin chrome	✓	✓
Polished nickel	✓	✓
Satin nickel	✓	✓
Antique bronze	✓	



#### Un-switched Socket Outlets



**84221** 1 Gang 2 AMP Socket outlet



**84251** 1 Gang 5 AMP Socket outlet

The plastic inserts are available in either black or white.



#### Television Outlets



**86201** 1 Gang Isolated co-axial TV



**86202** 2 Gang Isolated co-axial TV



**86211** 1 Gang Satellite socket outlet



**86222** TV / Satellite socket outlet



**86233** TV / FM / Satellite triplex outlet

**86211** has nickel plated outlet. All other products are available with either black or white inserts.



#### Telephone Outlets



**86241** 1 Gang Master



**86242** 2 Gang Master



**86251** 1 Gang Slave



**86252** 2 Gang Slave

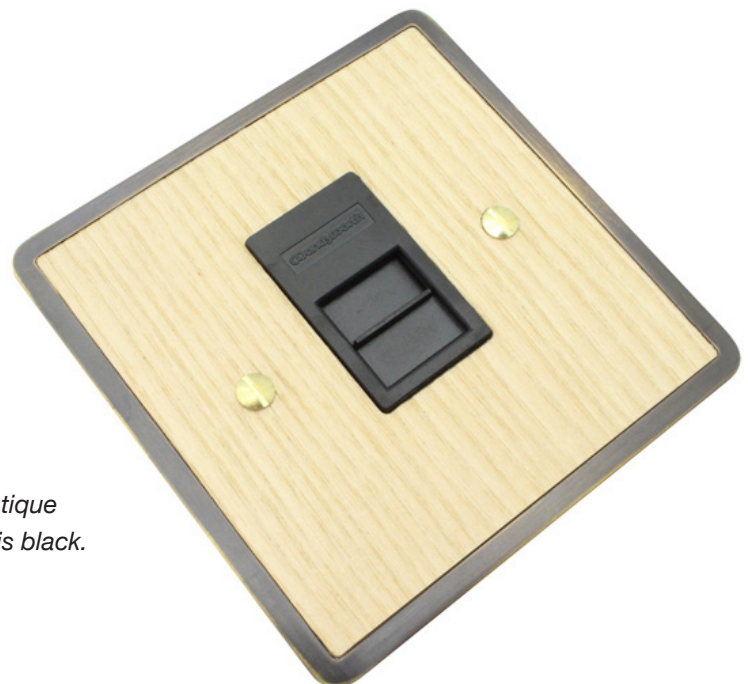


**86261** 1 Gang RJ45 CAT 5



**86262** 2 Gang RJ45 CAT 5

All these products are available with either black or white inserts.



**86241** ash with antique brass plate. Insert is black.

#### Fused Connection Outlets



**87202** 13 AMP Switch, fuse spur



**87212** 13 AMP Switch, fuse, neon spur



**87222** 13 AMP Switch, fuse, cord spur

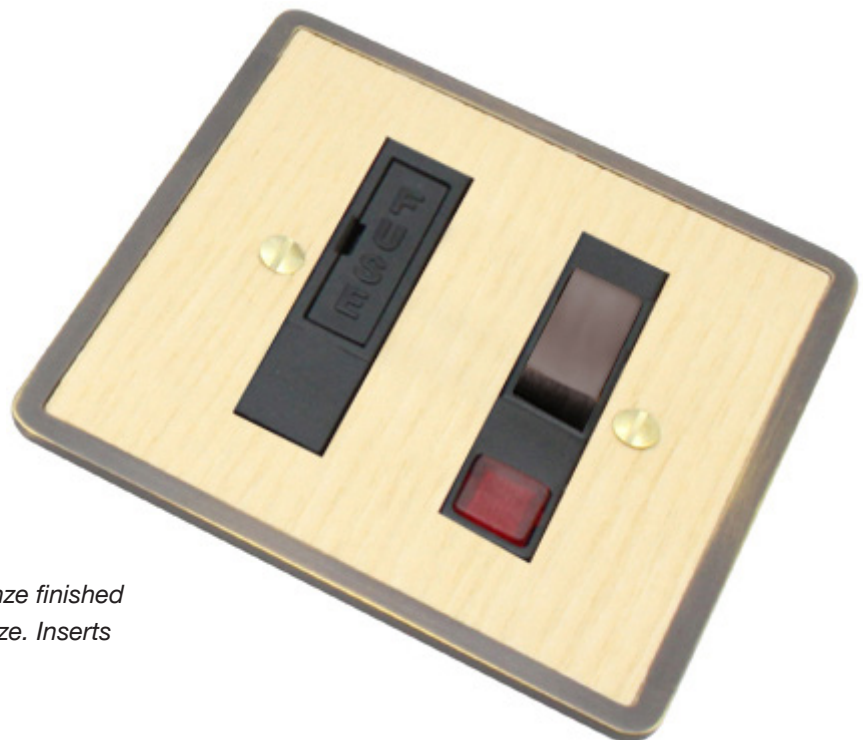


**87232** 13 AMP Switch, fuse, neon, cord spur



The metal switches are available in these combinations of finishes and plastic inserts. (Also available are plastic switches in either black or white).

SWITCH FINISH	INSERT COLOUR	
	BLACK	WHITE
Polished brass	✓	✓
Satin brass	✓	✓
Polished chrome	✓	✓
Satin chrome	✓	✓
Polished nickel	✓	✓
Satin nickel	✓	✓
Antique bronze	✓	



**87212** ash with antique bronze finished plate. Switch is antique bronze. Inserts are black.



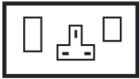
#### Cooker Switches



**88201** 45 AMP Cooker control switch, small



**88202** 45 AMP Cooker control switch with neon, small



**88203** 45 AMP Cooker control switch with 13 AMP switched socket outlet



**88201** and **88202** are only available with black or white plastic switches.

**88203** is available with black or white plastic switches as well as metal switches. Metal switches are available in:

Polished brass

Satin brass

Polished chrome

Satin chrome

Polished nickel

Satin nickel

Antique bronze.

#### Blank Plates



**89201** Single blank plate



**89202** Twin blank plate



#### Euro Module Plates



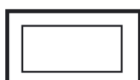
**89211** 1 Module euro plate



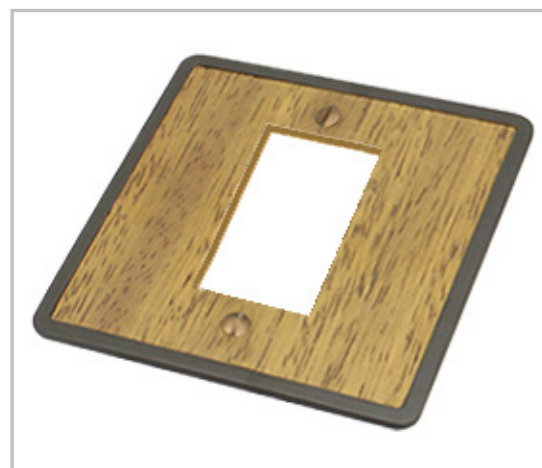
**89212** 2 Module euro plate



**89213** 3 Module euro plate



**89214** 4 Module euro plate



#### AV Modules



**V001B** RJ45 cat 5 module black  
**AV001W** RJ45 cat 5 module white



**AV002B** RJ11 module black  
**AV002W** RJ11 module white



**AV003B** BT master euro module black  
**AV003W** BT master euro module white



**AV004B** BT slave euro module black  
**AV004W** BT slave euro module white



**AV005B** Satellite TV outlet euro module black  
**AV005W** Satellite TV outlet euro module white



**AV006B** Female TV outlet module black  
**AV006W** Female TV outlet module white



**AV007B** Isolated female TV outlet black  
**AV007W** Isolated female TV outlet white



**AV008B** Male TV outlet module black  
**AV008W** Male TV outlet module white



**AV009B** RJ45 cat6 module black  
**AV009W** RJ45 cat6 module white



**AV010B** Triplex (FM DAB/Sat/TV) euro module black  
**AV010W** Triplex (FM DAB/Sat/TV) euro module white



**AV011B** Quadplex (Sat Sat TV FM DAB) module black  
**AV011W** Quadplex (Sat Sat TV FM DAB) module white



**AV012B** Single blank 25mm black  
**AV012W** Single blank 25mm white



**AV013B** Half blank 12.5mm black  
**AV013W** Half blank 12.5mm white



**AV014B** Double blank euro module black  
**AV014W** Double blank euro module white



**AV015B** Triple outlet (FM DAB/Sat/TV) black  
**AV015W** Triple outlet (FM DAB/Sat/TV) white



**AV016B** Diplex (FM DAB/TV) euro module black  
**AV016W** Diplex (FM DAB/TV) euro module white



**AV017B** 25mm BNC 50 ohm black  
**AV017W** 25mm BNC 50 ohm white



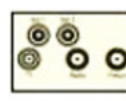
**AV018B** 25mm phono (female) module (RCA) black  
**AV018W** 25mm phono (female) module (RCA) white



**AV019B** Speaker module 4 binding posts black  
**AV019W** Speaker module 4 binding posts white



**AV020B** Speaker module 2 binding posts black  
**AV020W** Speaker module 2 binding posts white



**AV021B** Double satellite euro module (Sky+) black  
**AV021W** Double satellite euro module (Sky+) white



**AV022B** HDMI module (tailed) black  
**AV022W** HDMI module (tailed) white



**AV023B** 2 RCA phono (euro module) black  
**AV023W** 2 RCA phono (euro module) white



**AV024B** 3 RCA (phono) euro module black  
**AV024W** 3 RCA (phono) euro module white



**AV025B** USB charger black  
**AV025W** USB charger white



**AV026BB** Brush module 50mm black c/w black brush  
**AV026WB** Brush module 50mm white c/w black brush  
**AV026WW** Brush module 50mm white c/w white brush

#### Miscellaneous



**89231** 1 Gang speaker socket

---



**89232** 2 Gang speaker socket

---



**89241** Flex outlet plate

---



**89232** iroko with imitation bronze metal antique finished plate.







#### Series 5 Introduction

This series of switchplates and sockets answers every specifier's dream with *concealed fixing*.

#### Dimensions

Square plate dimensions 87x87mm

Rectangular plate dimensions 87x147mm

Projection of plate 7mm

#### Wall box

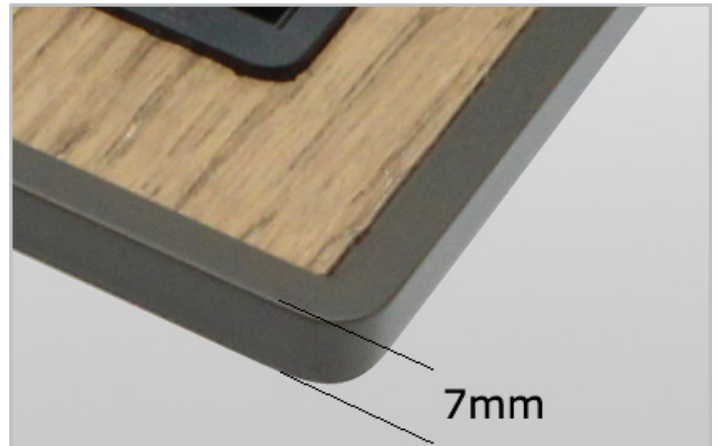
Depth of wall box required is 35mm, with the exception of:-

Blank plates, 25mm

Shaver socket, 47mm

*Not suitable for dry lining wall boxes*

*Not suitable for dual wall boxes*



7mm

#### Rocker Grid Switches



**81501** 1 Gang 20 AMP 2 way switch



**81511** 1 Gang 20 AMP intermediate switch



**81502** 2 Gang 20 AMP 2 way switches



**81503** 3 Gang 20 AMP 2 way switches

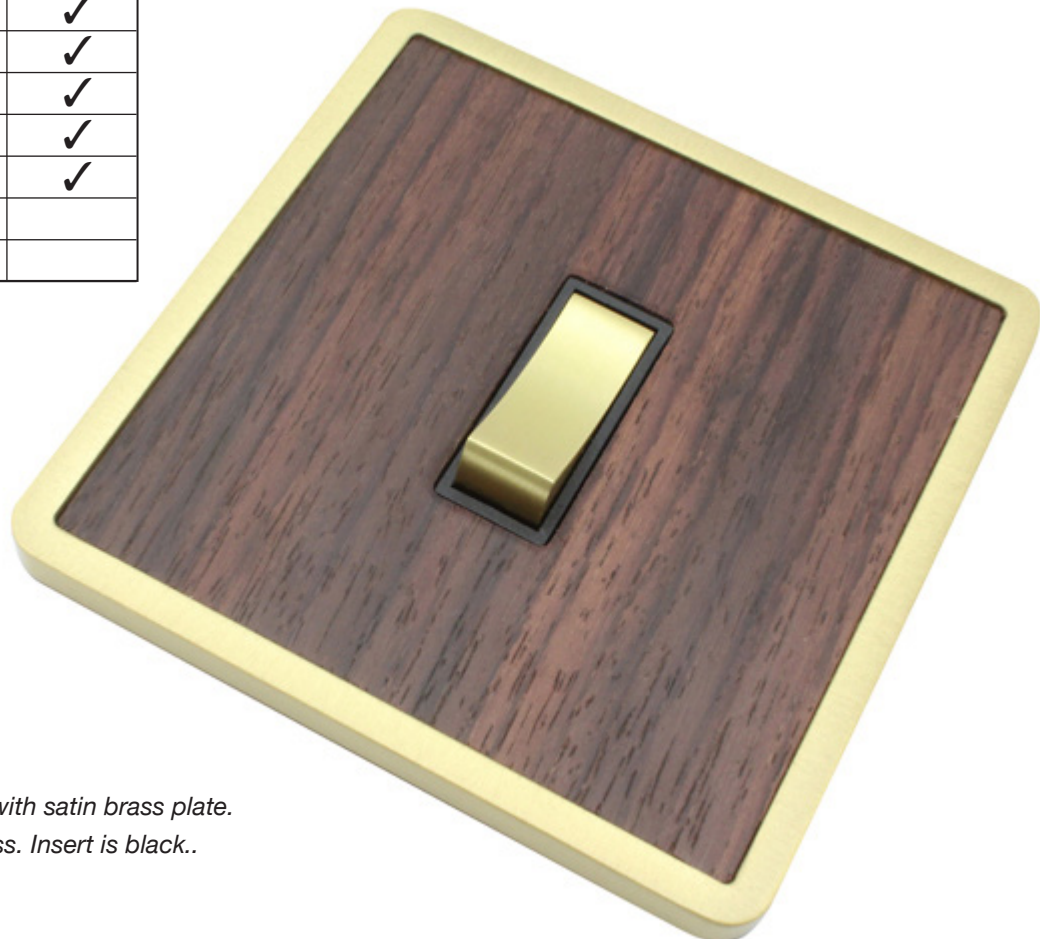


**81504** 4 Gang 20 AMP 2 way switches



The switches are available in these combinations of finishes and plastic inserts:-

SWITCH FINISH	INSERT COLOUR	
	BLACK	WHITE
Polished brass	✓	✓
Satin brass	✓	✓
Polished chrome	✓	✓
Satin chrome	✓	✓
Polished nickel	✓	✓
Satin nickel	✓	✓
Antique bronze	✓	
Antique brass	✓	



**81501** rosewood with satin brass plate.  
Switch is satin brass. Insert is black..

#### Dolly Grid Switches



**82501** 1 Gang 20 AMP 2 way toggle switch



**82511** 1 Gang 20 AMP intermediate toggle switch



**82502** 2 Gang 20 AMP 2 way toggle switches



**82503** 3 Gang 20 AMP 2 way toggle switches



**82504** 4 Gang 20 AMP 2 way toggle switches



The switches are available in the following finishes:-

Polished brass

Satin brass

Polished chrome

Satin chrome

Polished nickel

Satin nickel

Antique bronze



**82502** rosewood with satin brass plate.  
Switches are polished brass.



#### Dimmer Switches



**85501** 1 Gang 250W 2 way dimmer  
(mains and low voltage)



**85502** 2 Gang 250W 2 way dimmer  
(mains and low voltage)



**85503** 3 Gang 250W 2 way dimmer  
(mains and low voltage)



**85504** 4 Gang 250W 2 way dimmer  
(mains and low voltage)



**85511** 1 Gang 400W 2 way dimmer  
(see note)



**85512** 2 Gang 400W 2 way dimmer  
(see note)



**85521** 1 Gang 700W LV / 1000W Mains dimmer



**85511** and **85512** can be used on mains, low voltage, dimmerable compact fluorescent and dimmerable LED

Note: The control knobs are only available in the following finishes:-

Polished brass

Satin brass

Polished chrome

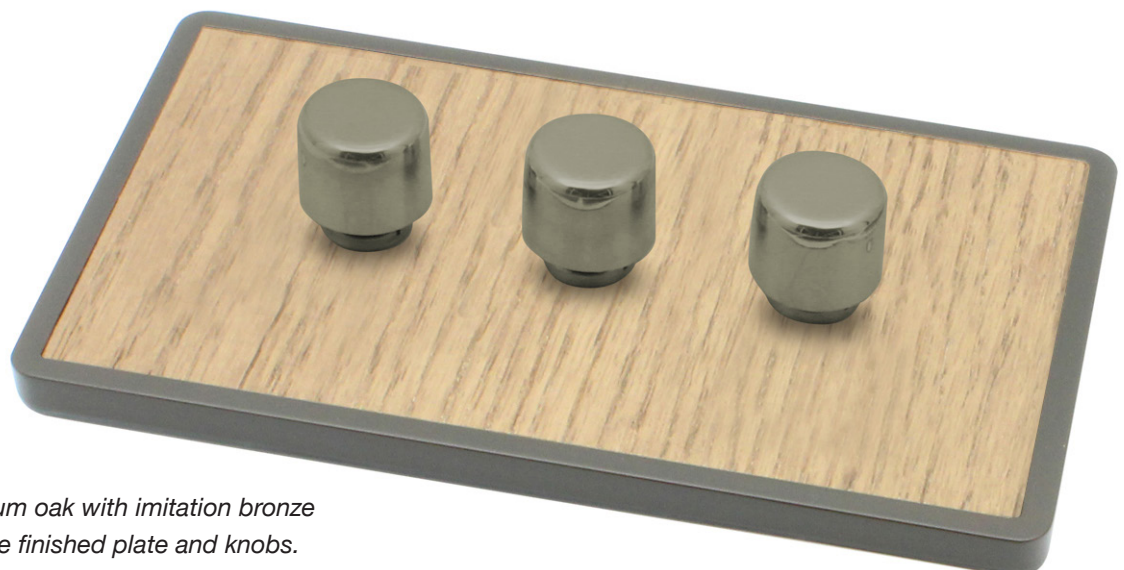
Satin chrome

Polished nickel

Satin nickel

Antique brass

Imitation bronze metal antique

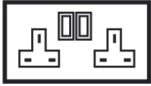


**85503** medium oak with imitation bronze metal antique finished plate and knobs.

#### Switched Socket Outlets



**84501** 1 Gang 13 AMP Switched socket outlet



**84502** 2 Gang 13 AMP Switched socket outlet

The switches are available in these combinations of finishes and plastic inserts:-

SWITCH FINISH	INSERT COLOUR	
	BLACK	WHITE
Polished brass	✓	✓
Satin brass	✓	✓
Polished chrome	✓	✓
Satin chrome	✓	✓
Polished nickel	✓	✓
Satin nickel	✓	✓
Antique bronze	✓	
Antique brass	✓	



#### Un-switched Socket Outlets



**84521** 1 Gang 2 AMP Socket outlet



**84551** 1 Gang 5 AMP Socket outlet

The plastic inserts are available in either black or white.



**84502** medium oak with imitation bronze metal antique finished plate. Switches are antique bronze. Inserts are black.

#### Television Outlets



**86501** 1 Gang Isolated co-axial TV



**86502** 2 Gang Isolated co-axial TV



**86511** 1 Gang Satellite socket outlet



**86533** TV / FM / Satellite triplex outlet

**86511** has nickel plated outlet. All other products are available with either black or white inserts.



#### Telephone Outlets



**86541** 1 Gang Master



**86551** 1 Gang Slave



**86561** 1 Gang RJ45 CAT 5



**86562** 2 Gang RJ45 CAT 5

All these products are available with either black or white inserts.



**86501** rosewood with satin brass plate.



#### Fused Connection Outlets



**87502** 13 AMP Switch, fuse spur



**87512** 13 AMP Switch, fuse, neon spur



**87522** 13 AMP Switch, fuse, cord spur



**87532** 13 AMP Switch, fuse, neon, cord spur



The switches are available in these combinations of finishes and plastic inserts:-

SWITCH FINISH	INSERT COLOUR	
	BLACK	WHITE
Polished brass	✓	✓
Satin brass	✓	✓
Polished chrome	✓	✓
Satin chrome	✓	✓
Polished nickel	✓	✓
Satin nickel	✓	✓
Antique bronze	✓	
Antique brass	✓	



**87512** dark mahogany with antique brass finished plate. Switch is antique bronze. Inserts are black.

#### Cooker Switches

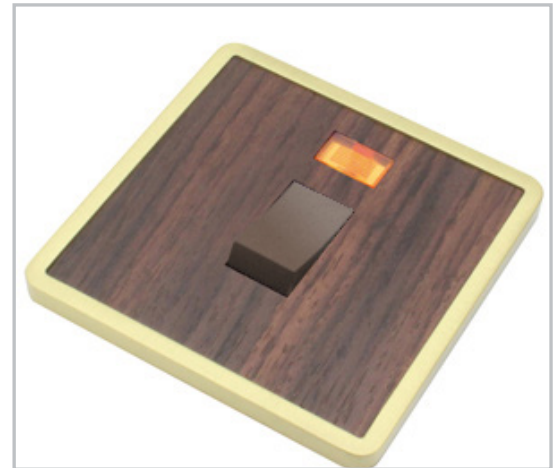


**88506** 50 AMP Cooker control switch with neon

---

The switches are only available in black or white.

---



#### Blank Plates



**89501** Single blank plate

---



**89502** Twin blank plate

---



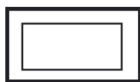
#### Euro Module Plates



**89541** 2 Module euro plate



**89512** 3 Module euro plate



**89514** 4 Module euro plate



#### AV Modules



**V001B** RJ45 cat 5 module black  
**AV001W** RJ45 cat 5 module white



**AV002B** RJ11 module black  
**AV002W** RJ11 module white



**AV003B** BT master euro module black  
**AV003W** BT master euro module white



**AV004B** BT slave euro module black  
**AV004W** BT slave euro module white



**AV005B** Satellite TV outlet euro module black  
**AV005W** Satellite TV outlet euro module white



**AV006B** Female TV outlet module black  
**AV006W** Female TV outlet module white



**AV007B** Isolated female TV outlet module black  
**AV007W** Isolated female TV outlet module white



**AV008B** Male TV outlet module black  
**AV008W** Male TV outlet module white



**AV009B** RJ45 cat6 module black  
**AV009W** RJ45 cat6 module white



**AV010B** Triplex (FM DAB/Sat/TV) euro module black  
**AV010W** Triplex (FM DAB/Sat/TV) euro module white



**AV011B** Quadplex (Sat Sat TV FM DAB) module black  
**AV011W** Quadplex (Sat Sat TV FM DAB) module white



**AV012B** Single blank 25mm black  
**AV012W** Single blank 25mm white



**AV013B** Half blank 12.5mm black  
**AV013W** Half blank 12.5mm white



**AV014B** Double blank euro module black  
**AV014W** Double blank euro module white



**AV015B** Triple outlet (FM DAB/Sat/TV) black  
**AV015W** Triple outlet (FM DAB/Sat/TV) white



**AV016B** Diplex (FM DAB/TV) euro module black  
**AV016W** Diplex (FM DAB/TV) euro module white



**AV017B** 25mm BNC 50 ohm black  
**AV017W** 25mm BNC 50 ohm white



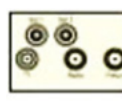
**AV018B** 25mm phono (female) module (RCA) black  
**AV018W** 25mm phono (female) module (RCA) white



**AV019B** Speaker module 4 binding posts black  
**AV019W** Speaker module 4 binding posts white



**AV020B** Speaker module 2 binding posts black  
**AV020W** Speaker module 2 binding posts white



**AV021B** Double satellite euro module (Sky+) black  
**AV021W** Double satellite euro module (Sky+) white



**AV022B** HDMI module (tailed) black  
**AV022W** HDMI module (tailed) white



**AV023B** 2 RCA phono (euro module) black  
**AV023W** 2 RCA phono (euro module) white



**AV024B** 3 RCA (phono) euro module black  
**AV024W** 3 RCA (phono) euro module white



**AV025B** USB charger black  
**AV025W** USB charger white



**AV026BB** Brush module 50mm black c/w black brush  
**AV026WB** Brush module 50mm white c/w black brush  
**AV026WW** Brush module 50mm white c/w white brush



#### Miscellaneous



**89541** Flex outlet plate

---



**Silver Kite Ltd.**  
**10 Four Oaks, Chesham,**  
**Buckinghamshire, HP5 2SD**

**Tel: 01494 774779**  
**Fax: 01494 810130**  
**[www.silverkite.co.uk](http://www.silverkite.co.uk)**

Product designs copyright © 2017 Nick Rogers.

All rights reserved. Any unauthorised copying will constitute an infringement of copyright. These product designs and the name Arbor are registered with the UK Copyright Service, Registration number 285530.