

Street Design Limited

Unit 35
Hayhill Industrial Estate
Barrow upon Soar
Leicestershire LE12 8LD

Contact us:

Telephone: 01509 815335
Fax: 01509 815332
Email: sdl@street-design.com
Web site: www.street-design.com



BOWDEN planter

As UK based, designers and manufacturers, Street Design can manufacture and supply the Bowden, weathering steel, modular planters, to suit your specific requirements. The modular design, allows you complete flexibility, to create long, linear planters, large units or smaller individual containers. Choose from a range of accessories to ensure that the Bowden planters are manufactured to suit your specific scheme.

Bowden planters are suitable for:

- modular planters
- roof garden planters
- tree planters
- moveable planters

Product Details

Product Specification

Accessories

Watering System

Adjustable Feet

Material Finishes

Material Specifications

Care & Maintenance



1000x1000x800mm high Bowden planter

Bowden planters, The Fort retail park, Glasgow

BOWDEN planter

PRODUCT DETAILS

General

The Bowden modular external planter, is a multi-use, all metal planter, available in a range of sizes to suit your scheme and budget. Planters up to 2.8 x 2.8m plan size can be delivered fully assembled ready for planting. Larger planters can be manufactured in sections and delivered for assembly on site. Shaped planters can be manufactured and supplied including:- square, rectangular, L shaped, U shaped and Z shaped planters. A number of planter accessories are available to ensure that the Bowden planter is suitable for your specific scheme.

With Standard base (for long and narrow planters)

The Bowden, modular metal planter, is constructed by fixing a weathering steel planter body to a timber base. The planter modules are manufactured in sections for bolting together to create large, long and shaped planters. The planter base is constructed using 45x45mm FSC® certified treated redwood with 12mm Marine grade plywood. The module is strengthened using cross brace straps or brackets. When fully constructed, the base of the planter is fully lined with a geotextile lining which allows water to drain through whilst retaining the soil fines.

Standard base



45x45mm FSC® certified treated redwood frame with 12mm Marine grade plywood

Street Design Limited

Unit 35
Hayhill Industrial Estate
Barrow upon Soar
Leicestershire LE12 8LD

Contact us:
Telephone: 01509 815335
Fax: 01509 815332
Email: sdl@street-design.com
Web site: www.street-design.com



With optional base (for tree and movable planters)

The Bowden metal planter, is constructed by fixing a weathering steel planter body to a fully welded mild steel base frame. The internal base is constructed using 75x50x6mm mild steel angle. The planter walls are strengthened using 50x10mm cross brace straps. FSC® certified treated Eucalyptus plywood sheeting is laid onto the base. Planter feet are fitted to the underside of the base frame, to ensure that the load is safely transferred to the ground. When fully constructed, the base of the planter is fully lined with a geotextile lining which allows water to drain through whilst retaining the soil fines.

Leg types available

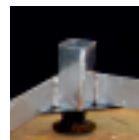


Standard base has no legs
Base sits on ground level



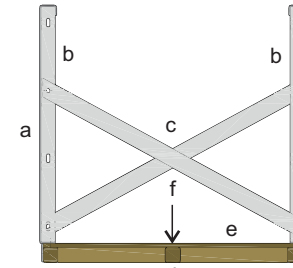
Optional base with 50x50mm mild steel SHS legs

Extra cost option adjustable feet for optional base



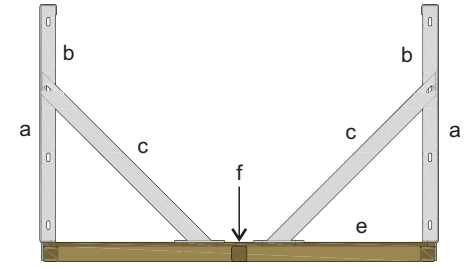
M30 adjustable legs are fitted mild steel brackets that are welded to the optional galvanised mild steel base

Section thro' planters with standard base



Section thro' narrow planter

for long narrow planters installed on level ground or roof gardens



Section thro' wide planter

for long wider planters installed on level ground or roof gardens

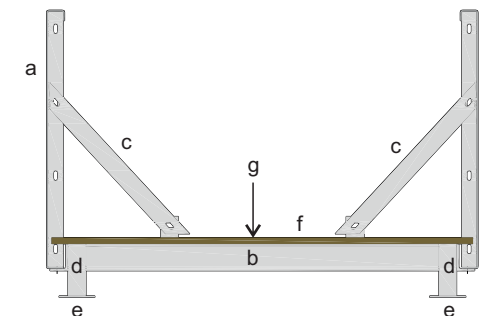
Key

a - 3mm Weathering steel
b - 3mm Weathering steel
c - 50x10mm galvanised mild steel straps
d - 45x45mm FSC® certified treated redwood
e - 12mm Marine grade plywood
f - Geotextile membrane filter lining

Key

a - 3mm Weathering steel
b - 3mm Weathering steel
c - Galvanised steel bracket
d - 45x45mm FSC® certified treated redwood
e - 12mm Marine grade plywood
f - Geotextile membrane filter lining

Section thro' planters with optional base



Section thro' planter with optional base

for free-standing tree and movable planters

Key

a - 3mm Weathering steel
b - 75x50x6mm mild steel angle
c - 50x10mm mild steel straps
d - 50x50x3mm mild steel SHS legs
e - 100x100x5mm mild steel planter foot plate
f - 18mm FSC® certified treated FSC certified plywood
g - Geotextile membrane filter lining

BOWDEN planter

PRODUCT SPECIFICATION

Street Design Limited

Unit 35
Hayhill Industrial Estate
Barrow upon Soar
Leicestershire LE12 8LD

Contact us:

Telephone: 01509 815335
Fax: 01509 815332
Email: sdl@street-design.com
Web site: www.street-design.com



Technical information

Material		
Planter walling	3mm thick Weathering (COR-TEN™) steel	
Planter walling finish	Shot blasted (left to weather naturally)	
Standard base construction		
Standard base frame material	45x45mm FSC® certified treated redwood	
Standard base frame finish	Natural	
Standard base floor	12mm thick Marine grade plywood	
Optional base construction		
Optional base frame material	75x50x6 angle, 50x50x3 SHS and 100x5mm flat mild steel	
Optional base frame material	Hot dip galvanised	
Optional base floor	18mm thick FSC® certified treated plywood	
Optional base leg (leg with footplate)	50x50x3 SHS and 100x5mm flat mild steel	
Optional base leg (plinth with footplate)	75x50x6 angle and 100x5mm flat mild steel	
Accessories		
	Adjustable feet	Base skirting boards
	Tree anchor fittings	Trellis panels
	Bench seating	Pergola structures
	Watering systems	Inner tower planters
Guarantee		
Standard planter heights	500mm	900mm
Other heights available on request		
Standard planting depths	413mm	813mm
Weights		
Walling panels	11 kgs / linear m	20 kgs / linear m
Standard timber base	28 kgs / m²	28 kgs / m²
Optional mild steel base	45 kgs / m²	45 kgs / m²
Light fill material can be based on:	1000 kgs / m³	
Heavy fill material can be based on:	2000 kgs / m³	

Construction

All Street Design products are designed and manufactured using only quality, durable materials, construction details and fixings, to provide a long-lasting, durable life expectancy.

Assembly

Planters up to 2.8 x 2.8m can be delivered to site fully assembled for off loading and positioning on site. Planters larger than 2.8m can be supplied in sections for bolting together on site.

Materials (Standard construction)

Weathering (COR-TEN™) steel sheet.
45x45mm treated redwood and Marine grade plywood.
All mild steel fixings will be M10 size and have a bright zinc plated finish.
Planters will be fitted with a geotextile filter fabric lining, which allows the water to drain through the planter, while retaining the fill material.

Materials (Optional construction)

Weathering (COR-TEN™) steel sheet.
Mild steel angle, flats and hollow section.
FSC® certified treated Eucalyptus plywood.
All mild steel fixings will be M10 size and have a bright zinc plated finish.
Planters will be fitted with a geotextile filter fabric lining, which allows the water to drain through the planter, while retaining the fill material.

Standard finish

The weathering steel planter body will have a shot blasted finish. The mild steel base frame, legs and cross brace straps will have a galvanised finish.

Options

Bowden planters are manufactured to order.

Before we can manufacture the planters, we need to know the following:

- plan size of planters
- heights of planters
- details of accessories required

Accessories

To enhance your Bowden planter and create a product that is suitable for your specific application, you can add from a range of planter accessories.

- Adjustable feet
- Watering system
- Integral bench seating
- Inner tower planters
- Base skirting
- Pergola structures
- Trellis panels
- Plaques

Timber policy

All treated softwood planters are manufactured using materials obtained from growers who operate under the Forest Stewardship Council® (FSC®).
All iroko hardwood planters are manufactured using materials obtained from growers who operate under the Forest Stewardship Council® (FSC®).



Optional base construction for Bowden movable planter

BOWDEN planter

ACCESSORIES

Bowden modular planters can be manufactured and supplied to include a range of optional accessories. Planters can incorporate; adjustable feet, tree anchor fittings, base skirtings, watering systems, bench seating, inner tower planters, LED lighting, pergolas and trellis panels.

Adjustable feet

Bowden planters can be manufactured with optional adjustable feet to allow the planter to be height adjusted to ensure that the top of the planter is level. The adjustable feet, allow the planter to be levelled after relocation. See separate page for Adjustable Feet details.

Watering system

Bowden planters can be supplied with a choice of 2 watering systems. Street Design can supply either a reservoir system, with filler pipe or the Mona, subterranean tank system. See separate page for Watering System details.

LED lighting

Bowden planters can be supplied with apertures cut into the sides of the planters or we can add timber bearers or metal brackets to accommodate your specified LED lighting products. Please contact the sales office to discuss your specific requirements.

Moveable planters

Bowden planters are supplied with an internal steel base frame allowing the planters to be moved whilst fully planted. The steel frame provides additional strength and ensures suitable supports for the forklift tines.

Street Design Limited

Unit 35
Hayhill Industrial Estate
Barrow upon Soar
Leicestershire LE12 8LD

Contact us:

Telephone: 01509 815335
Fax: 01509 815332
Email: sdl@street-design.com
Web site: www.street-design.com



Tree anchor fittings

Bowden planters can incorporate tree anchor points. They can be fitted at the bottom of the planter to help support the root ball and they can be fitted at the top of the planter to help provide support for the tree.

The tree anchors are manufactured as part of the internal mild steel frame.

Pergola structures and trellis panels

Pergola structures and trellis panels can be integrated into the planter construction. Pergolas and trellis allow high level planting and create shading for seating areas.

Bench seating

Integral planter benches, with or without armrests, can be supplied with Bowden planters. As standard 2 bench designs are available. Other designs can be included upon request. The Bexley bench consists of 4 no. 70x45mm timber slats and the Henley bench has 2 no. 145x45mm wide bench slats. The timber slatted benches bolt onto galvanised mild steel brackets, attached to the planter sides. Benches can be fitted to 1, 2, 3 or 4 sides to suit your requirements. The choice of material and finish is the same as for the planter. As standard the brackets will have a galvanised finish. As an optional extra, they can be polyester powder coated.



Optional Henley planter bench



Optional Mona watering system



Optional aperture for LED light fitting



Optional M30 adjustable feet

Planter bench configurations



bench on 1 side



bench on 2 sides opposite



bench on 2 sides adjacent



bench on 2 sides adjacent (mitred)



bench on 3 sides



bench on 3 sides (mitred)



bench on 4 sides



bench on 4 sides (mitred)

BOWDEN planter

WATERING SYSTEMS

Street Design Limited

Unit 35
Hayhill Industrial Estate
Barrow upon Soar
Leicestershire LE12 8LD

Contact us:

Telephone: 01509 815335
Fax: 01509 815332
Email: sdl@street-design.com
Web site: www.street-design.com



Watering System 1 - Street Design reservoir system

The Street Design watering accessory is a reservoir system with hydroleca sacks, that maximises the available water.

The system ensures the optimum use of the water and nutrients, delivering the maximum quantity directly to the roots of the plants, resulting in improved root development and optimal plant growth.

General

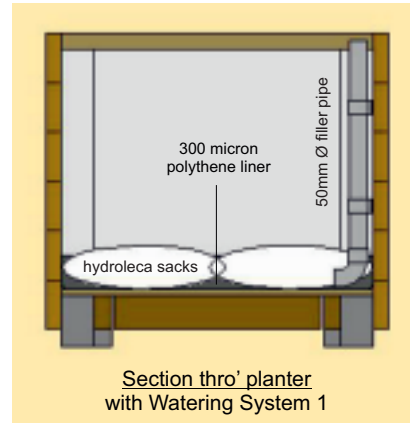
The system consists of a 300 micron thick black polythene liner, hydroleca (pulverised ash granules) sacks and a rigid plastic filler pipe.

The system delivers water directly to the roots via 50mm diameter, rigid plastic pipe, eliminating water wastage. This encourages deep root growth, improving long term drought resistance. The high level filler pipe provides an easy access point for watering and soluble fertiliser application.

Installation

Planters are supplied with the Water System 1 already installed.

Ensure the hydroleca sacks are in the correct position. They will move during transportation. Check that all the plastic pipe connections are properly fitted. The planter is ready for drainage material, filling and planting.



Polythene liner with filler pipe



Hydroleca sacks laid out in base of planter

Watering System 2 - MONA subterranean tank system

Mona watering system

Factory fitted into planter / tree container

The Mona Plant System (MPS) is an advanced, well proven and easy to use subterranean irrigation system. It is the cost effective and environmentally friendly solution for both interior and exterior landscaping.

The Mona Plant System ensures that the water and nutrients are delivered in the right quantity to the root of the plants, resulting in improved root development and optimal plant growth.

General

The system consists of storage tanks, flexible linking pipes and a flexible filler pipe with filler pipe cap. The system delivers water directly to the roots via capillary action, eliminating water wastage. This encourages deep root growth, improving long term drought resistance. The cap and lid provides an easy access point for watering and soluble fertiliser application.

Factory installation

All necessary water tanks, pipes, end caps and air pipes with level indicator, are factory fitted into the planters / tree containers, prior to delivery.

Filling planters

Ensure that the distance between the top of the link tank and the lowest part of the root does not exceed 150mm.



Water storage tanks and filler pipe



Planter ready for soil and planting



Completed planters

For full details visit: www.green-tech.co.uk

BOWDEN planter

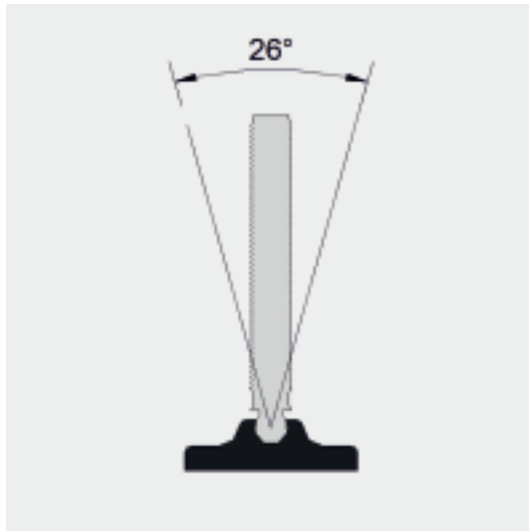
ADJUSTABLE FEET

General details

As an extra cost option, Street Design planters can be supplied with adjustable feet. They allow the planter to be levelled, before filling and planting.

Adjustable feet are particularly useful if the planters are likely to be relocated to a new position.

The adjustable foot screw fits into a hex nut, located on the underside of the planter base.



Specification

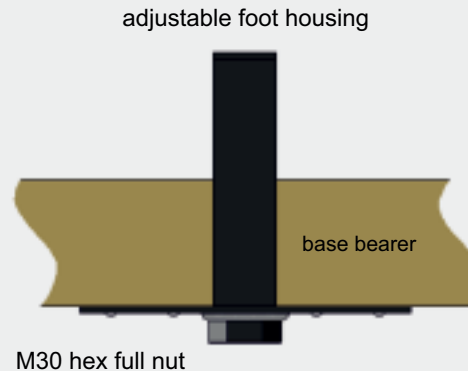
The adjustable foot comprises of a M30 Ø threaded bar, with spherical end section, press fitted into a black reinforced polyamide base. The swivel base can tilt through 360° to accommodate sloping ground levels. The threaded bar is BZP (bright zinc plated) treated.

Street Design Limited

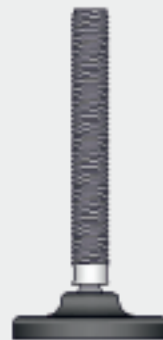
Unit 35
Hayhill Industrial Estate
Barrow upon Soar
Leicestershire LE12 8LD

Contact us:

Telephone: 01509 815335
Fax: 01509 815332
Email: sdl@street-design.com
Web site: www.street-design.com



Adjustable Foot Mounting Plate



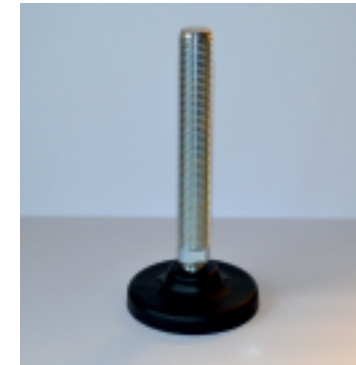
Adjustable Foot

Fitting and adjustment

The M30 adjustable foot with swivel base, is screwed into adjustable foot mounting plate. The mild steel mounting plate with adjustable foot housing, is fixed to the underside of the planter base. A M30 hex full nut is welded to the underside of the mounting plate. The adjustable foot is adjusted with a 26mm wrench.

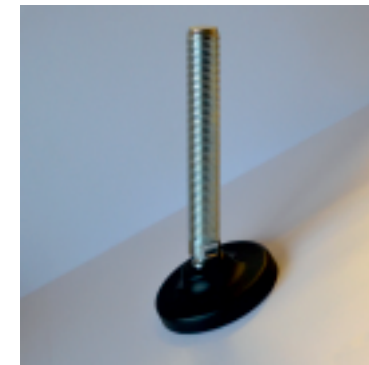
Base diameter

M30 adjustable foot with swivel base. The base diameter is 122mm.



Swivel base

The swivel base can adjust to allow for sloping ground with a fall of up to 1 in 2.06 (26°).



Bolt down base

For extra security, it is possible to drill and bolt through the base of the adjustable feet.



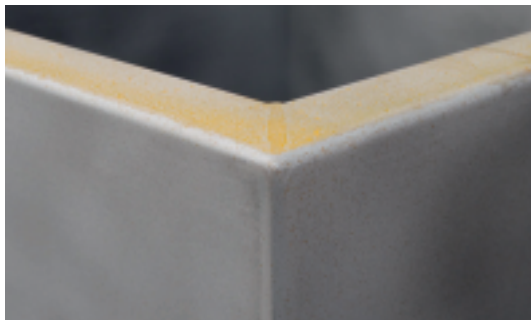
BOWDEN planter

MATERIAL FINISHES

The Bowden sheet metal planter, comprises of a fully welded weathering steel planter body, bolted onto a mild steel base frame.



Bowden 1000x1000x800mm high weathering steel planter, shown here with galvanised mild steel base with legs.



The Bowden weathering steel planter body, shot blasted after fabrication. Image shows the effect of change 3 days after shot blasting.

Street Design Limited

Unit 35
Hayhill Industrial Estate
Barrow upon Soar
Leicestershire LE12 8LD

Contact us:

Telephone: 01509 815335
Fax: 01509 815332
Email: sdl@street-design.com
Web site: www.street-design.com



Standard finishes

Weathering steel standard finish

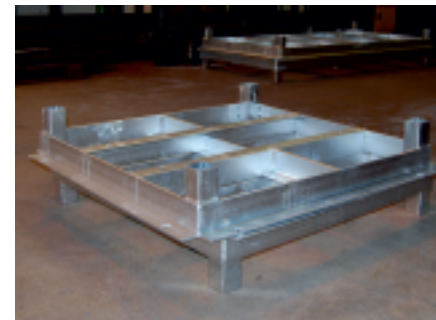
As standard, Bowden weathering steel planters will be left to weather naturally. After fabrication, the weathering steel will be shot blasted to allow the surface to weather evenly. Weathering steel protects itself from corrosion by forming a protective oxide patina, eliminating the need for protective coatings. The attractive nature of mature weathering steel blends pleasingly with the environment and it's appearance changes and improves with age. The average period after which the natural oxidation is considered to be stable and when it permanently takes on it's typical rusty brown colour and does not release any more rust powder, is 12 to 18 months. We do not guarantee against any discharge of rust in the area under the furniture item for the above mentioned period.



The Bowden weathering steel planter body is supplied with a shot blasted finish and left to weather naturally (rusty brown).

Mild steel base standard finish

As standard, the mild steel base frames will be supplied with a hot dip galvanised finish.



The Bowden weathering steel planter base frames are supplied with a hot dip galvanised finish (bases shown here are for planters with optional adjustable feet).

Optional finish

Mild steel base optional finish

As an optional extra, at extra cost, the mild steel base frame can be polyester powder coated after galvanising.



Optional polyester powder coated base - RAL 9005, black.

BOWDEN planter

MATERIAL SPECIFICATION

Standard planter and base

Weathering steel planter body

3mm thick weathering (COR-TEN™) steel sheet.

Internal cross brace straps

50x10mm mild steel flat.

Fixing bolts

M12 x 30mm hex head bolts, bright zinc plated.

Base frame

45x45mm FSC® certified treated European redwood.

Base floor

12mm Marine grade plywood.

Internal lining

Geotextile filter fabric membrane.

Optional base (for movable planters)

Base frame

75x50x6mm mild steel angle.

Internal cross brace straps

50x10mm mild steel flat.

Fixing bolts

M12 x 30mm hex head bolts, bright zinc plated.

Base frame legs

50x50x3mm mild steel SHS.

Leg baseplate

100x100mm plate x 5mm thick

Base floor

18mm FSC® certified Eucalyptus treated plywood.

Internal lining

Geotextile filter fabric membrane.

Optional planter accessories

Adjustable feet

M30 adjustable feet with swivel base. See Adjustable Foot page for full details.

Tree anchors

25x5mm mild steel flat, hot dip galvanised.

Watering system

Choose either the Street Design reservoir system or the Mona tank system. See Watering System page for full details.

Street Design Limited

Unit 35
Hayhill Industrial Estate
Barrow upon Soar
Leicestershire LE12 8LD

Contact us:

Telephone: 01509 815335
Fax: 01509 815332
Email: sdl@street-design.com
Web site: www.street-design.com



Optional planter accessories continued

Planter benches

Bowden planters can be supplied with integral planter benches in a variety of materials. The bench slats can be supplied in FSC® certified treated European redwood or FSC® certified iroko hardwood, mild steel or stainless steel. The slats will be bolted to either hot dip galvanised mild steel or stainless steel bench brackets.

Base skirting

12mm thick Marine grade plywood boards, screw fixed to brackets welded to the underside of the planter frame.

Movable planters

Bowden planters can be manufactured with an integral mild steel frame allowing them to be moved when planted.

Pergola structures

Pergola structures can be manufactured as an integral part of the planter construction. The steel frame can be extended to carry the upper horizontal 145x45mm section timber bearers and cross bearers.

Trellis panels

Trellis panels can be manufactured as an integral part of the planter construction. The steel frame can be extended to carry the horizontal and vertical trellis timber slats.

Inner tower planters

Bowden planters can be supplied with co-ordinating inner tower planters to create feature planting or tiered planting.

Material samples

Material samples are available on request.

Guarantee

All planters are guaranteed for 15 years minimum. This guarantee is a minimum and is dependant on the product not being misused or abused. All the materials, treatments and construction will allow for a life expectancy considerably longer than this.

General specification

Construction

All Street Design products are designed and manufactured using only quality, durable materials, construction details and fixings, to provide a long-lasting, durable life expectancy.

Assembly

Bowden planters up to 2.8 x 2.8m will be delivered to site fully assembled for off loading and positioning on site. Planters larger than 2.8m will be supplied in sections for bolting together on site.

Timber policy

All treated softwood products are manufactured using materials obtained from growers who operate under the Forest Stewardship Council® (FSC®).

All iroko hardwood products are manufactured using materials obtained from growers who operate under the Forest Stewardship Council® (FSC®).

Materials

Hardwood products are constructed using FSC® certified iroko hardwood, from sustainable sources. Softwood products are constructed using FSC® certified European redwood that has been Wolmanit CX treated, for a desired service life of 30 years minimum.

All mild steel fabricated components will be hot dip galvanised after fabrication to BS EN ISO 1461:2009.

All stainless steel fabricated components will be grade 304. Grade 316 can be specified if the location or project requires it.

All mild steel fixings will be bright zinc plated, and all stainless steel fixings will be A2 (grade 304) A4 (grade 316) can be specified if the location or project requires. Planters will be fitted with a geotextile filter fabric lining, which allows the water to drain through the planter, while retaining the fill material.

Planter finish

Bowden, weathering steel planters will be supplied with a shot blasted finish, to be left to weather naturally.

Planter bench finishes

The FSC® certified treated softwood and iroko hardwood bench slats will be left natural to reduce the need for re-staining and help reduce maintenance costs. If required, timber bench slats can be supplied with a stained finish using 3 coats of quick drying water based wood stain, to the colour of your choice.

Mild steel planter benches will be left with a galvanised finish only. If required, after hot dip galvanising, the mild steel components can be polyester powder coated, to the colour of your choice. The galvanised parts are prepped, treated and sprayed with the polyester powder, before being baked in an oven.

Stainless steel planter benches will have a dull polished finish.

BOWDEN planter

CARE & MAINTENANCE

Street Design Limited

Unit 35
Hayhill Industrial Estate
Barrow upon Soar
Leicestershire LE12 8LD

Contact us:

Telephone: 01509 815335
Fax: 01509 815332
Email: sdl@street-design.com
Web site: www.street-design.com



General

All Bowden planter products are manufactured using quality materials and finishes. The base frames will be fully welded mild steel and will be hot dip galvanised after fabrication. The weathering steel will be supplied with its natural finish. All products require a varied amount of maintenance, depending on the environment, usage and weather conditions. Galvanised steel will only require cleaning. In time, the optional powder coated mild steel will require re-coating. Generally, the weathering steel should not be touched, due to the properties of the naturally weathering material. It is important to regularly visually inspect the planter body, as detailed below.

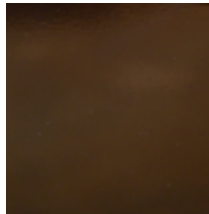
Maintaining the standard mild steel finish

Hot dip galvanised mild steel is a very durable and hard wearing finish. Dirt can be washed off with warm water and a mild detergent. Always use clean water and cleaning cloths to avoid surface contamination. After cleaning, any severe marks can be over painted with a cold galvanised, (zinc rich) aerosol spray.



Maintaining the optional mild steel finish

Polyester powder coated finishes should be washed down with clean warm water and a mild detergent. Minor touching up can be done with an aerosol to match the original powder coated colour. Details can be obtained from Street Design Limited. More severe damage can be repaired by sanding down, by manual or mechanical means, beyond the damaged area, sufficiently far as to ensure that any step in the powder coated finish is removed. This will ensure that after re-finishing the repair will be difficult to detect.



Maintaining the standard weathering steel finish

Visual inspections of weathering steel should be carried out at least every two years. The surface condition of the oxide patina is a good indicator of performance. Adherent, fine-grained oxide indicates that corrosion is progressing as expected, while coarse, flaking layers of oxide suggest excessive corrosion.

Visual inspections should also look for, such as accumulations of dirt or debris

and moisture retention due to overgrown vegetation.

Any serious problems should be traced and rectified as soon as possible, to ensure the steel maintains its performance for the life of the planter.

Using a soft cloth, clean the contaminated area with warm water and a mild detergent. More stubborn areas can be cleaned using a stiff brush with warm water and a mild detergent.

