

sunfold



THE ADECO RANGE



In homes just as in personal relationships, nothing beats an excellent first impression. A high-quality door sets a welcoming ambience and raises the perceived value of your entire home as well as providing added security.

Outstanding advanced design is no longer contradictory to strict safety requirements. The double-sided attachment panel fulfils both demands superbly.

The exterior as well as the interior views of the door leaf display entirely flush surfaces. An approach to style and elegance that certainly lives up to high expectations.

"THE CLEAN AESTHETIC DESIGN LINES COMBINED WITH THE FLUSH SURFACES OF THE DOUBLE-SIDED ATTACHMENT PANEL IS THE RESULT OF CONSISTENT DESIGN."

Nina Wolf, Designer

The highly insulating core is made of rigid PU foam and cellulose. The glass pane insert is triple glazed. The design components used ensure optimum thermal insulation and with this promote energy savings. 3mm aluminium sheeting on the exterior surface and 2mm on the interior surface provide superior resistance to forced entries and give you a secure feeling in your own home.

Each door style is completed by its own high grade stainless steel handle that complements the design.

adeco aluminium attachment panels – a finely tuned combination of aesthetic charm, outstanding design with selected high-grade materials, state-of-the-art technology and precise craftsmanship.

# Penda



**Penda** | Glazed  
Stainless steel feature on the exterior surface  
Colour: Finea 03  
Glass: Clear  
Handle: HA 312, Matt brushed stainless steel

**Penda** | Glazed  
Stainless steel feature on the exterior surface  
Colour: Finea 04  
Glass: Clear  
Handle: HA 312, Matt brushed stainless steel

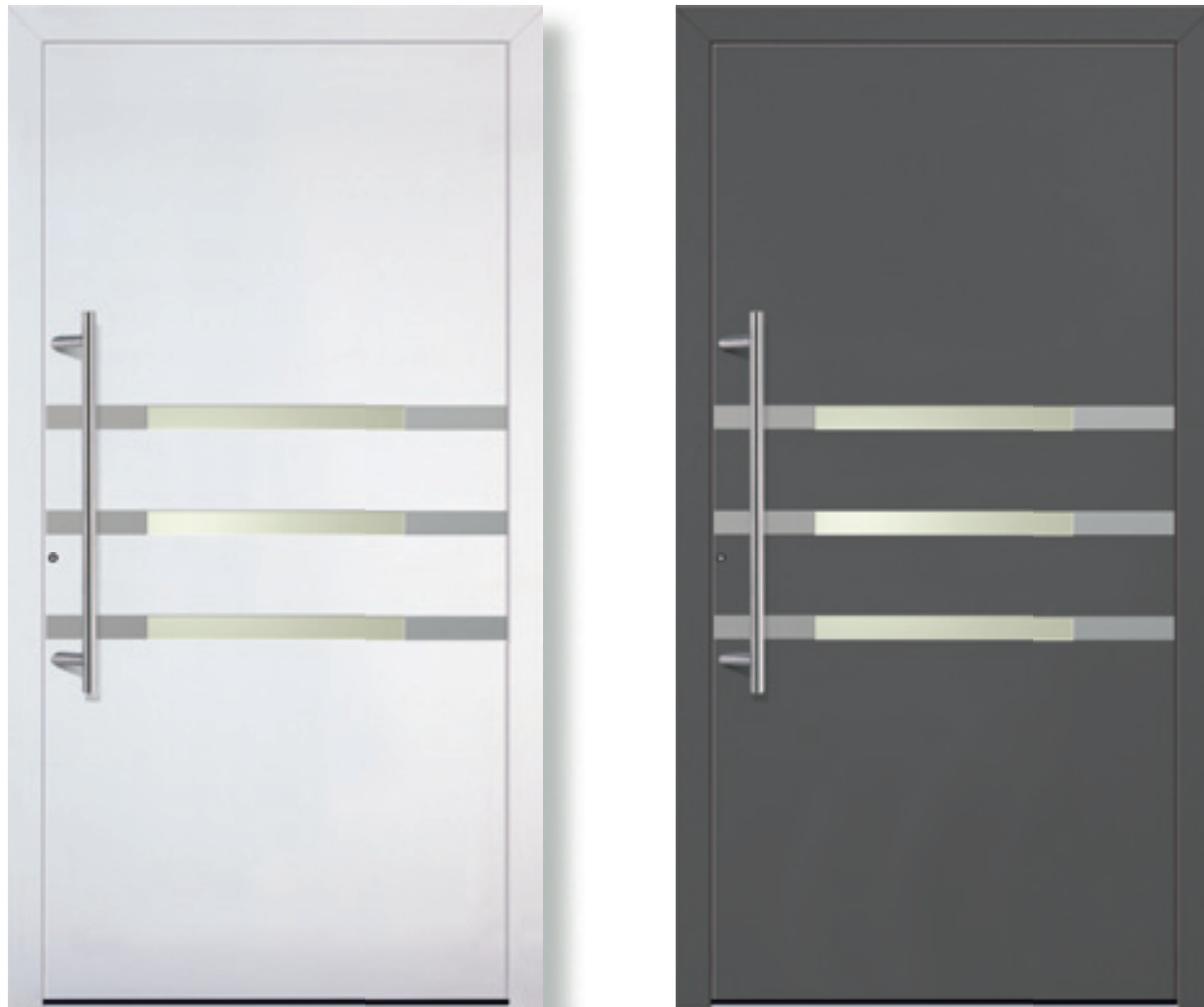


**Penda** | Glazed  
Stainless steel feature on the exterior surface  
Left and right glazed side panels  
Colour: White  
Glass: Clear  
Handle: HA 312, Matt brushed stainless steel

Handle: HA 312  
Matt brushed stainless steel



Trea



**Trea** | 3 glazed inserts  
Stainless steel feature on the exterior surface  
Colour: White  
Glass: Clear  
Handle: HA 623, Matt brushed stainless steel

**Trea** | 3 glazed inserts  
Stainless steel feature on the exterior surface  
Colour: Finea 04  
Glass: Clear  
Handle: HA 623, Matt brushed stainless steel

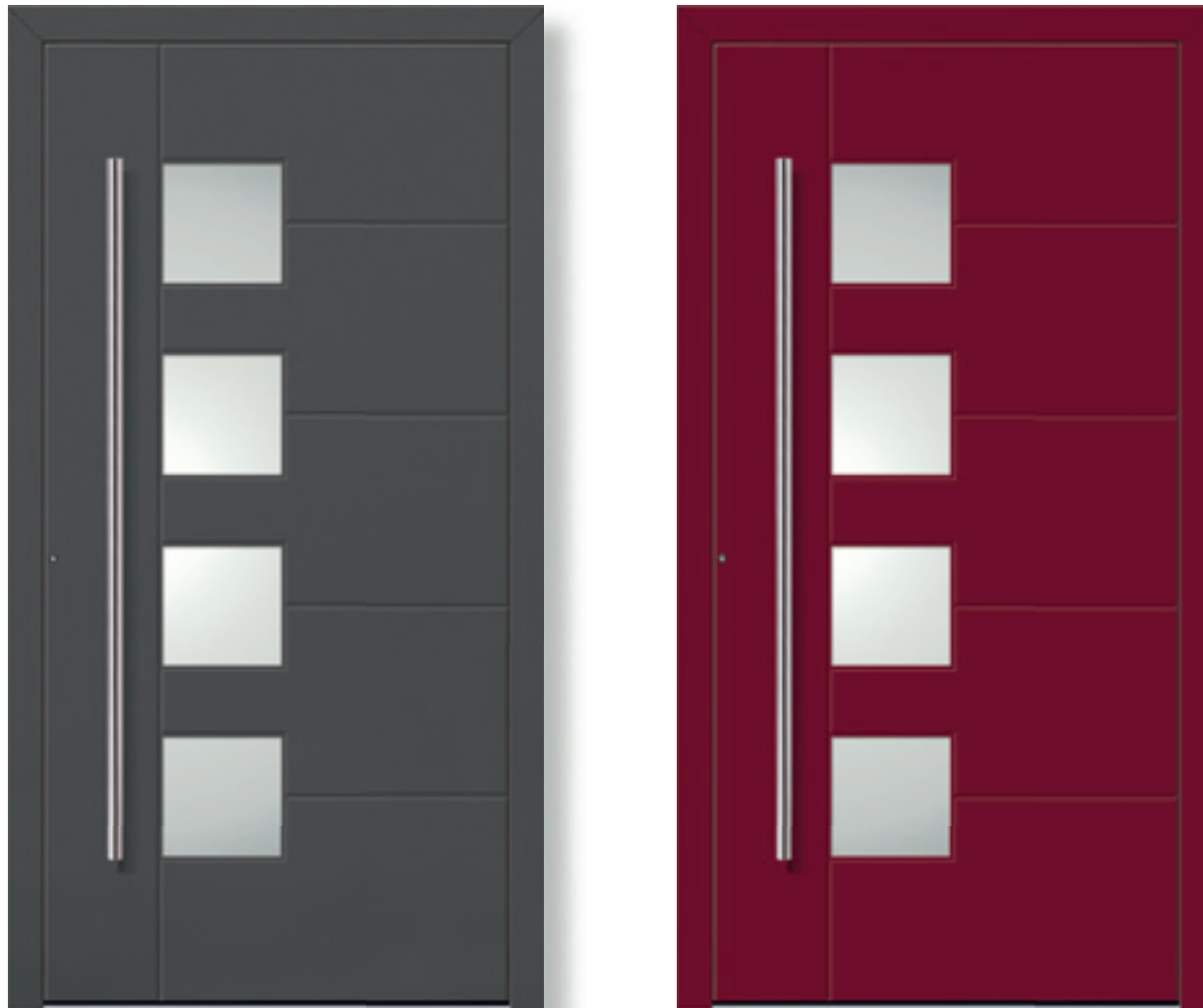


**Trea** | 3 glazed inserts  
Stainless steel feature on the exterior surface  
Left and right Satinato white glazed side panels  
Colour: Finea 03  
Glass: Clear  
Handle: HA 623, Matt brushed stainless steel

Handle: HA 623  
Matt brushed stainless steel



# Berneo



**Berneo** LH version | 4 glazed inserts  
Colour: Silver 04  
Glass: Satinato white  
Handle: HA 599, Matt brushed stainless steel

**Berneo** LH version | 4 glazed inserts  
Colour: Wine red  
Glass: Satinato white  
Handle: HA 599, Matt brushed stainless steel



**Berneo** LH version | 4 glazed inserts  
Colour: Silver grey  
Glass: Clear  
Handle: HA 599, Matt brushed stainless steel

Handle: HA 599  
Matt brushed  
stainless steel

# Lagon



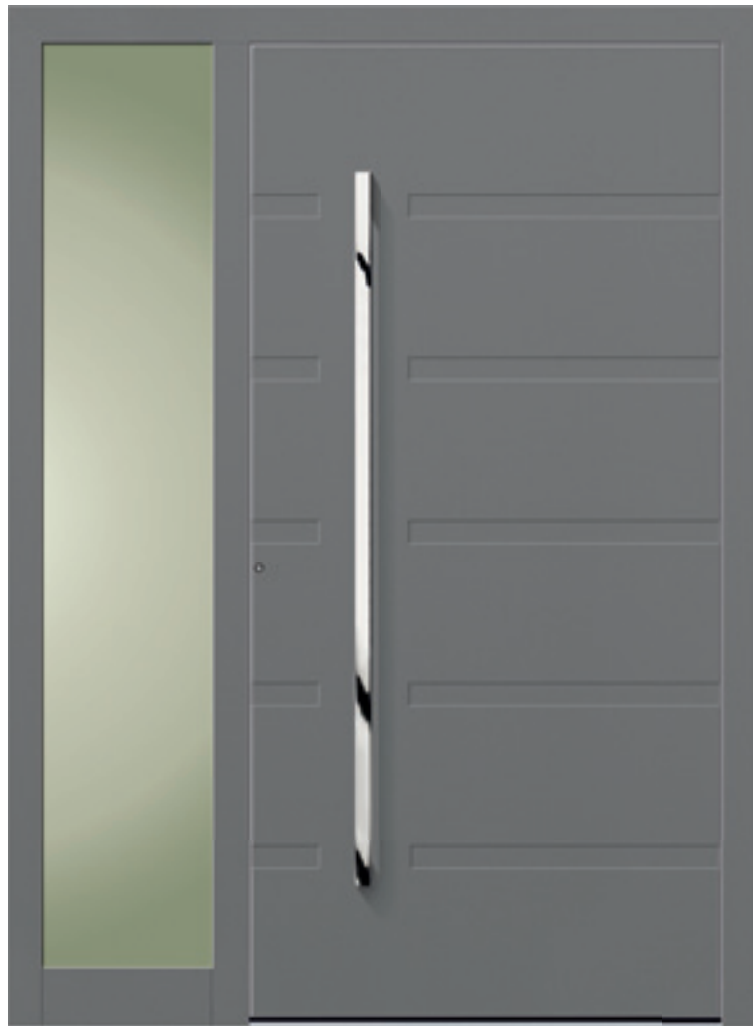
**Lagon RH version** | 4 glazed inserts  
Stainless steel feature on the exterior surface  
Colour: Silvea 03  
Glass: Clear  
Handle: HA 208, Matt brushed stainless steel

DETAIL  
Stainless steel feature  
Colour: Silvea 03  
Glass: Clear  
Handle: HA 208  
Matt brushed stainless steel



**Lagon LH version** | 4 glazed inserts  
Stainless steel feature on the exterior surface  
Colour: White  
Glass: Clear  
Handle: HA 208, Matt brushed stainless steel

# Antelli



**Antelli LH version** | No glazed insert  
Glazed side panel  
Colour: Silvea 03  
Glass: Clear  
Handle: HA 473, Polished stainless steel



**DETAIL**  
Handle HA 473  
Polished stainless steel



**Antelli RH version** | No glazed insert  
Left and right glazed side panels and fanlight  
Colour: White  
Glass: Clear  
Handle: HA 473  
Polished stainless steel

Vilea



**Vilea | Glazed**  
 Polished stainless steel inlays on the exterior surface  
 Colour: Finea 03  
 Glass: Satinato white  
 Handle: HA 321, Polished stainless steel

**DETAIL**  
 Polished stainless steel inlays  
 Colour: White  
 Handle: HA 321  
 Polished stainless steel



**Vilea | Glazed**  
 Polished stainless steel inlays on the exterior surface  
 Colour: Silver grey  
 Glass: clear  
 Handle: HA 321, Polished stainless steel

Handle HA 321  
 Polished stainless steel





# Limuni



**Limuni** | Glazed  
Elevated polished stainless steel squares  
on the exterior surface  
Colour: Anthracite grey  
Glass: Clear  
Handle: HA 321, Polished stainless steel

DETAIL  
Elevated polished  
stainless steel squares  
Colour: Anthracite grey  
Handle: HA 321  
Polished stainless steel



**Limuni** | Glazed  
Elevated polished stainless steel squares  
on the exterior surface  
Colour: Silvera 02  
Glass: Clear  
Handle: HA321, Polished stainless steel

# Dimension



**Dimension** | Glazed  
 Stainless steel feature on the exterior surface  
 Colour: White  
 Glass: Clear  
 Handle: HA 621, Matt brushed stainless steel

**Dimension** | Glazed  
 Stainless steel feature on the exterior surface  
 Colour: Moss green  
 Glass: Clear  
 Handle: HA 621, Matt brushed stainless steel



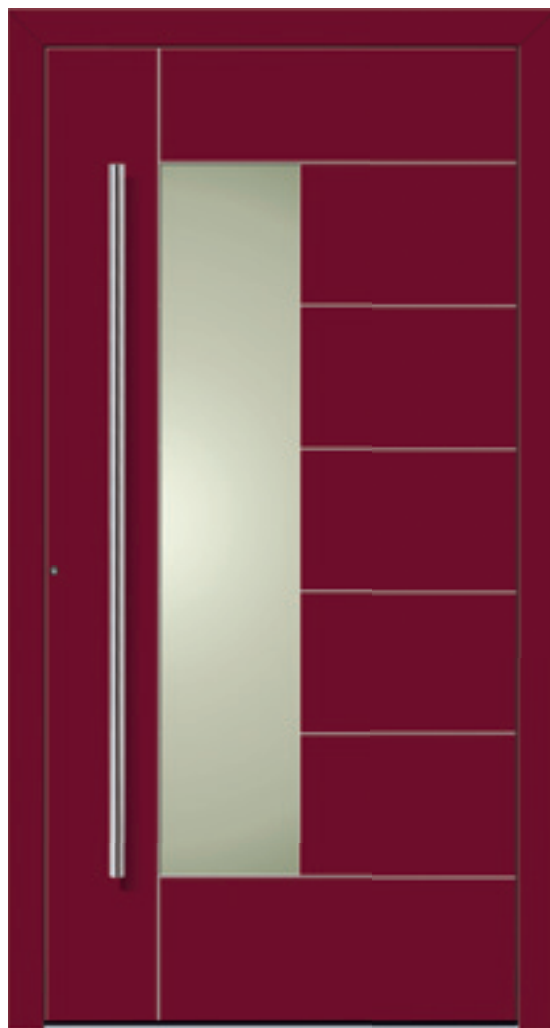
 **sunfold**

**Dimension** | Glazed  
 Stainless steel feature on the exterior surface  
 Colour: Anthracite grey  
 Glass: Clear  
 Handle: HA 621  
 Matt brushed stainless steel



Handle HA 621  
 Matt brushed stainless steel

# Metris Vision



**Metris Vision** LH version | Glazed  
Stainless steel inlays on the exterior surface  
Colour: Wine red  
Glass: Clear  
Handle: HA 591, Matt brushed stainless steel

**Metris Vision** LH version | Glazed  
Stainless steel inlays on the exterior surface  
Colour: White  
Glass: Satinato white  
Handle: HA 591, Matt brushed stainless steel



**Metris Vision** RH version | Glazed  
Stainless steel inlays on the exterior surface  
Colour: Anthracite grey  
Glass: Clear  
Handle: HA 591, Matt brushed stainless steel

Handle: HA 591  
Matt brushed  
stainless steel

## Metris Vision

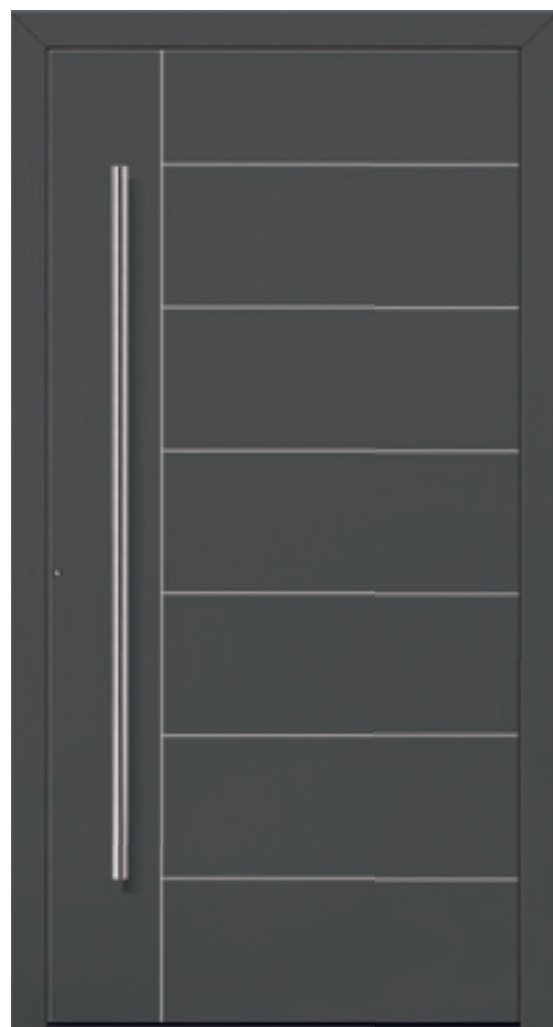


**Metris Vision LH version** | Glazed  
With Metris Vision RH version side part  
Stainless steel inlays on the exterior surface  
Colour: Finea 03  
Glass: Clear  
Handle: HA 591, Matt brushed stainless steel



**Metris Vision RH version** | Glazed  
With Metris Vision LH version side part  
Stainless steel inlays on the exterior surface  
Colour: White  
Glass: Clear  
Handle: HA 591, Matt brushed stainless steel

# Metris



**Metris** LH version | No glazed insert  
Stainless steel inlays on the exterior surface  
Colour: Silvera 04  
Handle: HA 591, Matt brushed stainless steel



**Metris** LH version | No glazed insert  
Left and right glazed side panels  
Stainless steel inlays on the exterior surface  
Colour: White  
Glass: Clear  
Handle: HA 591, Matt brushed stainless steel

# Caverro



**Caverro LH version** | 3 glazed inserts  
Stainless steel inlays on the exterior surface  
Colour: Finea 03  
Glass: Satinato white  
Handle: HA 591, Matt brushed stainless steel

**Caverro LH version** | 3 glazed inserts  
Stainless steel inlays on the exterior surface  
Colour: White  
Glass: Clear  
Handle: HA 591, Matt brushed stainless steel



**Caverro RH version** | 3 glazed inserts  
Stainless steel inlays on the exterior surface  
Colour: Finea 02  
Glass: Clear  
Handle: HA 591, Matt brushed stainless steel

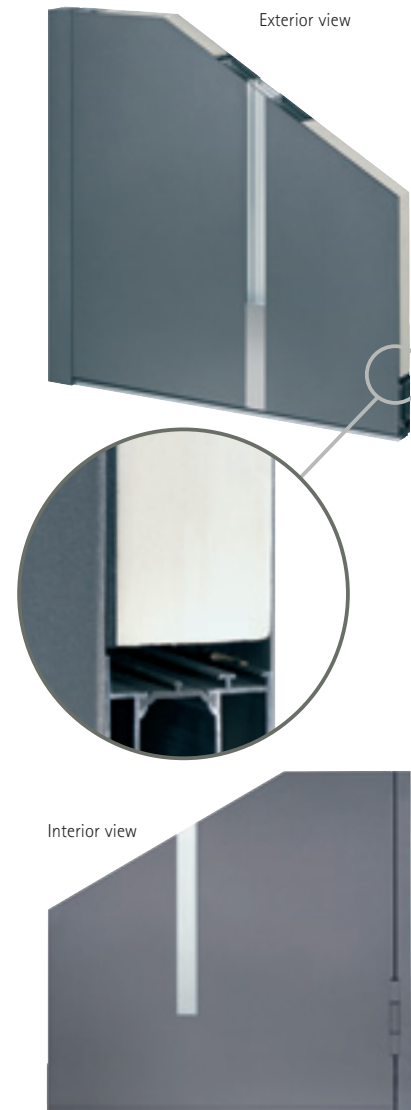
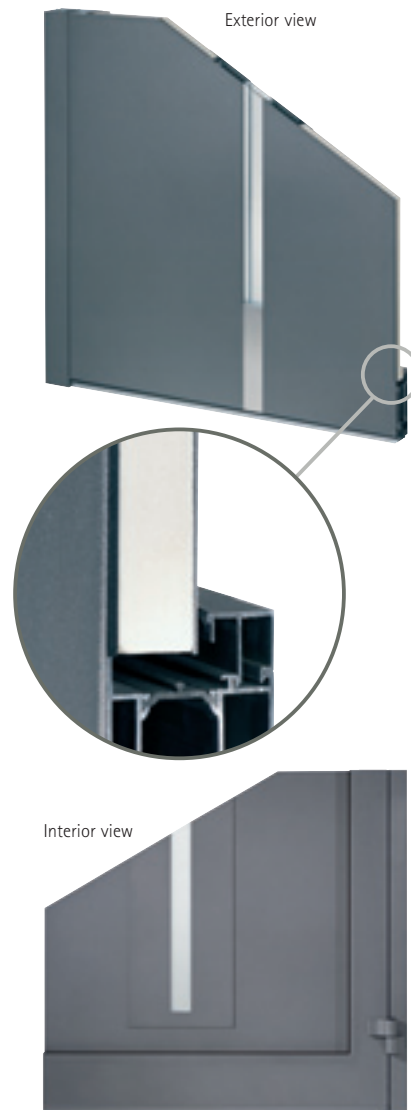
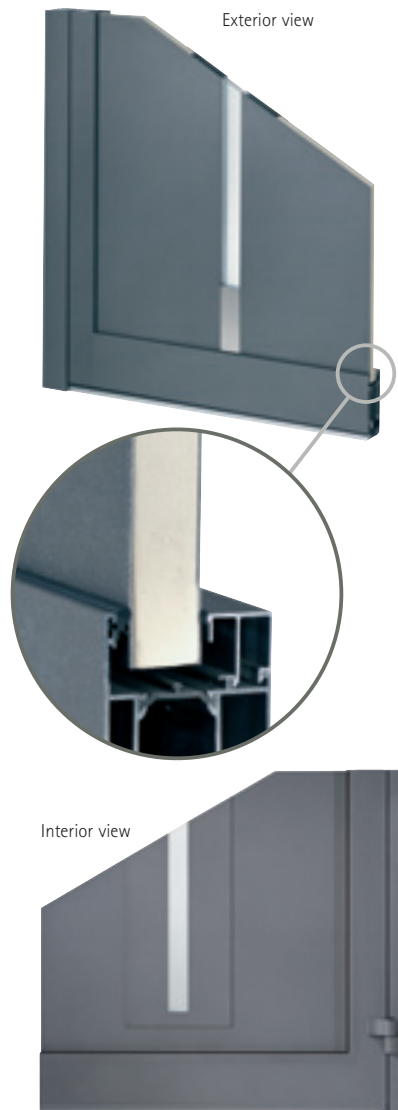
What is so special about the double-sided attachment panel?

for choosing a double-sided attachment panel

THE INSERT PANEL

THE SINGLE-SIDED ATTACHMENT PANEL

THE DOUBLE-SIDED ATTACHMENT PANEL



With its clear-cut aesthetic lines and its straightforward design, it follows a concept of clarity, demonstrating shape and functionality at its best.

In the first design phase, the adeco insert panel was developed. It is manufactured in accordance with the highest quality standards, and it is available in a wide range of selected models.

In the second design phase, the single-sided attachment panel followed as an approach to a more perfect and straight-lined design, resulting in more elegance due to its flush exterior surface.

Comparing thermal insulation values, the attachment panel performs much better than the insert panel.

In the third design phase, the design was consistently improved by reducing it right down to the essentials.

Elegance and perfection on the outside as well as on the inside due to the flush surfaces and concealed door leaf sections are characteristic features of the double-sided attachment panel.

Pure and aesthetic design at its very best. Incorporating improved thermal insulation, even more security and now even easier to clean.

The number one premium product of the adeco aluminium class brings design and function together. The double-sided attachment panel with its flush surfaces, clear aesthetic lines and outstanding design represents straightforward elegance. The door leaf itself is concealed. Absolutely no element disrupts the pure appeal.

Uncompromised design combined with excellently crafted functionality and workmanship. Visible rebates are coated using the same colour as for the door panel itself. Security is guaranteed with the 3mm aluminium sheeting on the outside, 2mm on the inside and triple glazing in the glass inserts. Our double-sided attachment panels are easy to maintain. Flush aesthetics resulting from the fact that there is no offset between the profile section of the door leaf and the door panel itself.

Easy care and maintenance due to the selected high-grade surface materials. Best insulation values are achieved. The corpus of the double-sided attachment panel consists of a highly insulating rigid foam core in combination with a 3mm layer of cellulose, thus achieving an insulation thickness of at least 65mm. The glass insert consists of triple insulation glazing (interior and exterior pane: Laminated Safety Glass).



## The FINEA colours

Diverse shades and extremely robust surfaces



FINEA 02

FINEA 03

FINEA 04

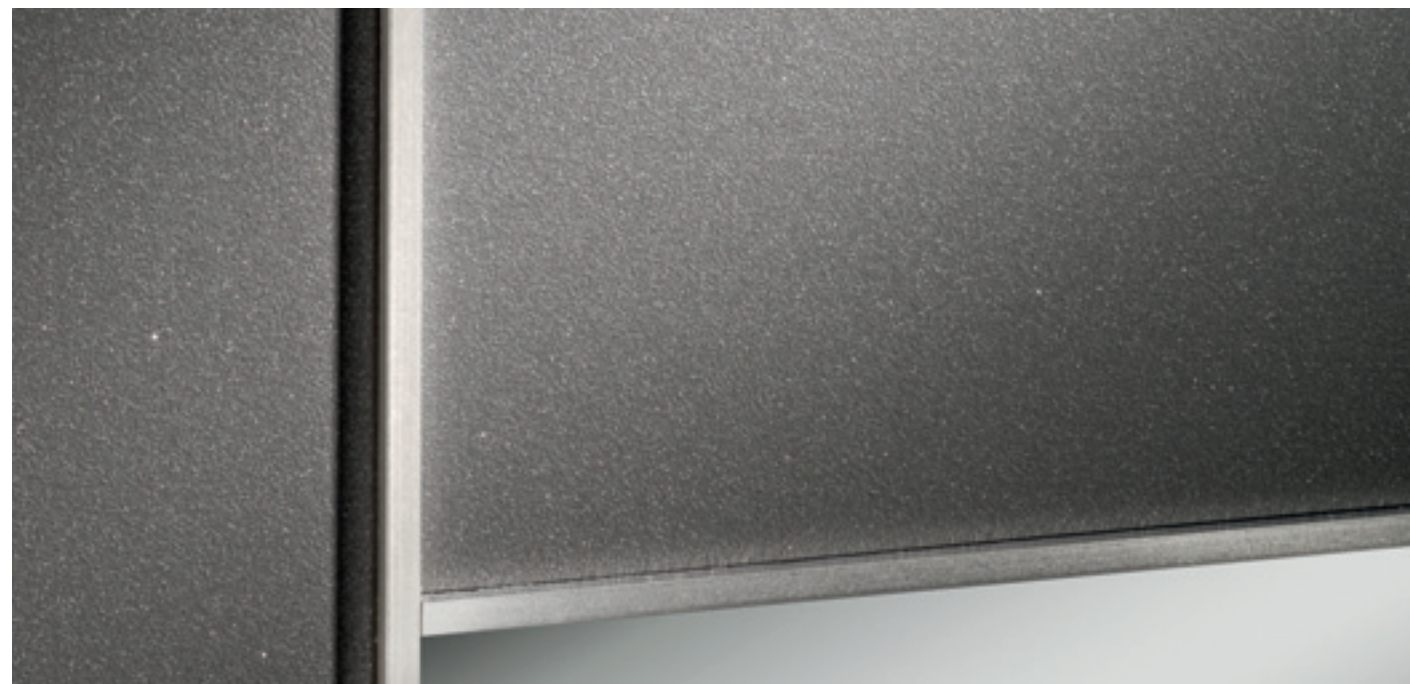
### FINEA – THE UNSURPASSED SURFACE COATING

Long-lasting, durable and extremely robust. Diversified gleam – textured finish – brilliant colours – various shades of elegant grey.

The fine, smooth and harmonious structure of the surface is coated by a particularly high concentration of coloured pigments combined with a fine grain size of raw material.

The wide spectrum of Finea colours looks dense and saturated, with an intense, rich shimmer in different shades. Embedded metal particles contribute to the elegant appearance.

The range of FINEA colours is characterised by its long-lasting durability. The FINEA coatings are not only easy to clean but also extremely sturdy and robust due to their special material composition. As a result of their unbeatable surface strength, the FINEA colours fulfil strict requirements on scratch resistance and resistance to impact.



## The SILVEA colours

Striking effect thanks to metallic microparticles



SILVEA 02

SILVEA 03

SILVEA 04



As well as colour pigments metallic microparticles are spread evenly over the surface leaving a smooth finish.

The grain size of the raw material has the effect that the surface finish looks flush, matt and yet bright.

Light is reflected by thousands of tiny shimmering dots. The SILVEA coated surface is durable and easy to clean.

## The RAL colours

Brilliant, deep and vibrant colours thanks to a satin surface finish



Traffic white RAL 9016

Carmine red RAL 3002

Wine red RAL 3005

Cobalt blue RAL 5013

Moss green RAL 6005



Agate grey RAL 7038

Silver grey RAL 7001

Iron grey RAL 7011

Anthracite grey RAL 7016

Deep black RAL 9005

Other RAL colours are available on request.





# sunfold



Konzeption & Gestaltung: BrillDesign.de · Herzebrock© 2009 · DEC285-GB 1. Auflage

Your specialised dealer:

**sunfold systems**

[www.sunfold.com](http://www.sunfold.com)

e: [front-doors@sunfold.com](mailto:front-doors@sunfold.com) t: +44(0)1953 423423 f: +44(0)1953 423430

Sunfold Systems Ltd, Sunfold House, Chestnut Drive, Wymondham Business Park, Wymondham, NR18 9SB

Due to reproduction and printing related reasons, the illustrations, RAL colour photographs, stainless steel features and inlays, silver or titanium anodised aluminium features presented in this catalogue are not binding.

The same applies to the selection of handles. We recommend the use of an original RAL colour chart for exact determination of the colour shades. The effect of glasses and colours differs depending on the light transmittance, time of day, season and installation location. The exterior views of the single-sided (A) and the double-sided (B) attachment panels are identical. All the door panels shown in the photographs are attachment panels. Height and width of the door frames may vary depending

on the positioning and type of profile used. The view may vary depending on the dimension of the door as well as on the type of door profile used. Door panels that are not shown in an installed but rather a stand-alone situation are pictured without door sills. Depending on the door manufacturer 3D hinges might vary.

Please contact your specialist dealer with any queries so that he may competently advise you.

Subject to change without notice.

[www.adeco.de](http://www.adeco.de)