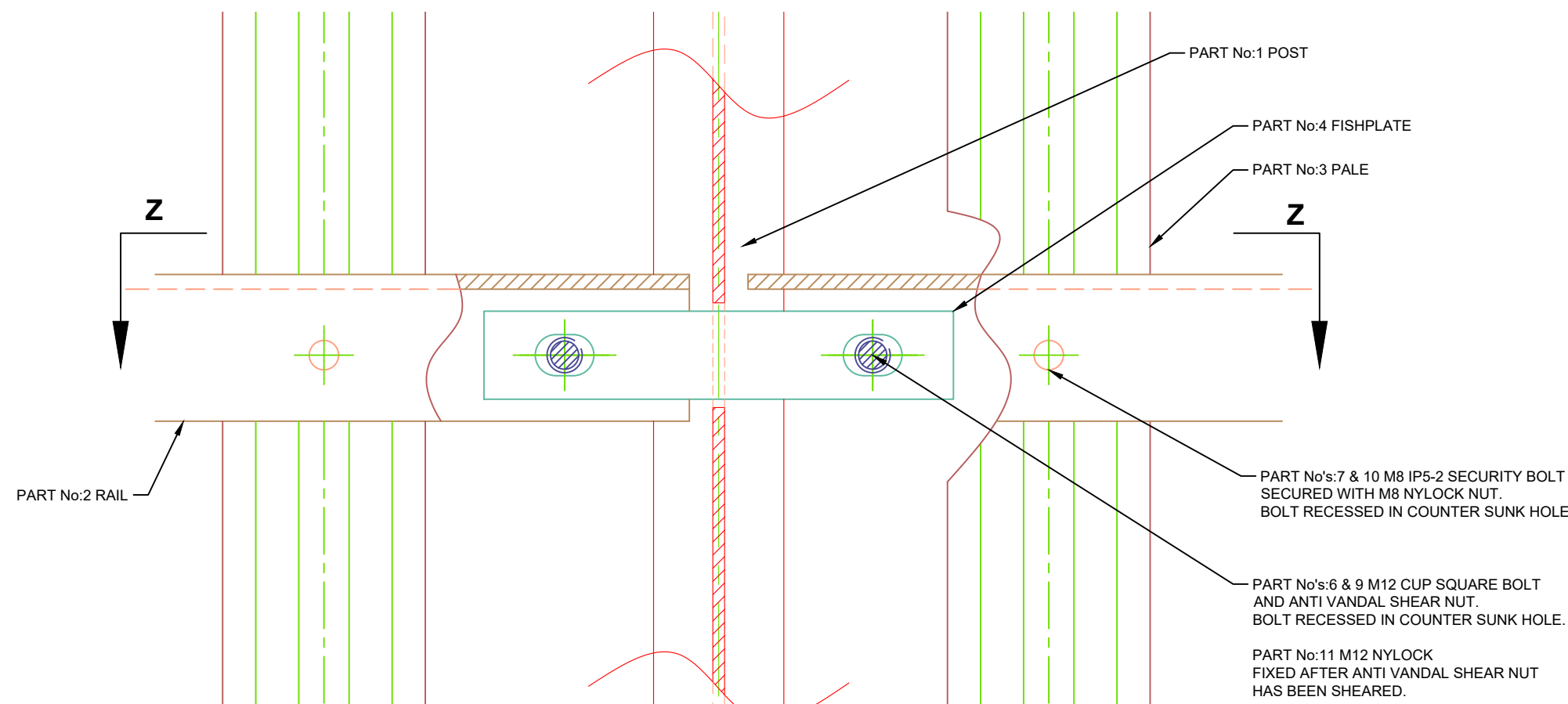
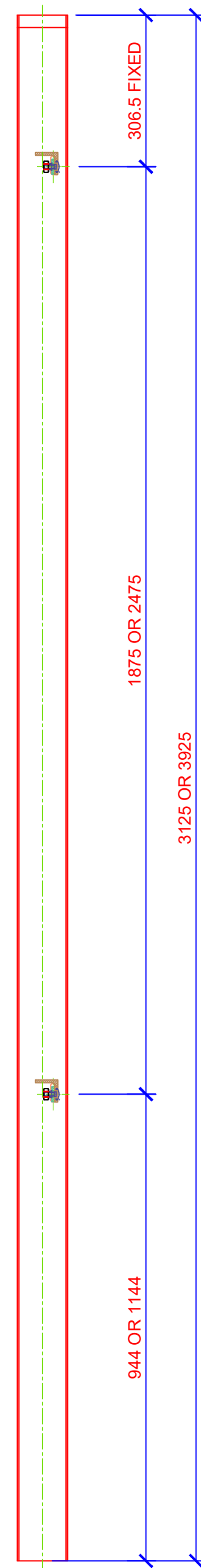


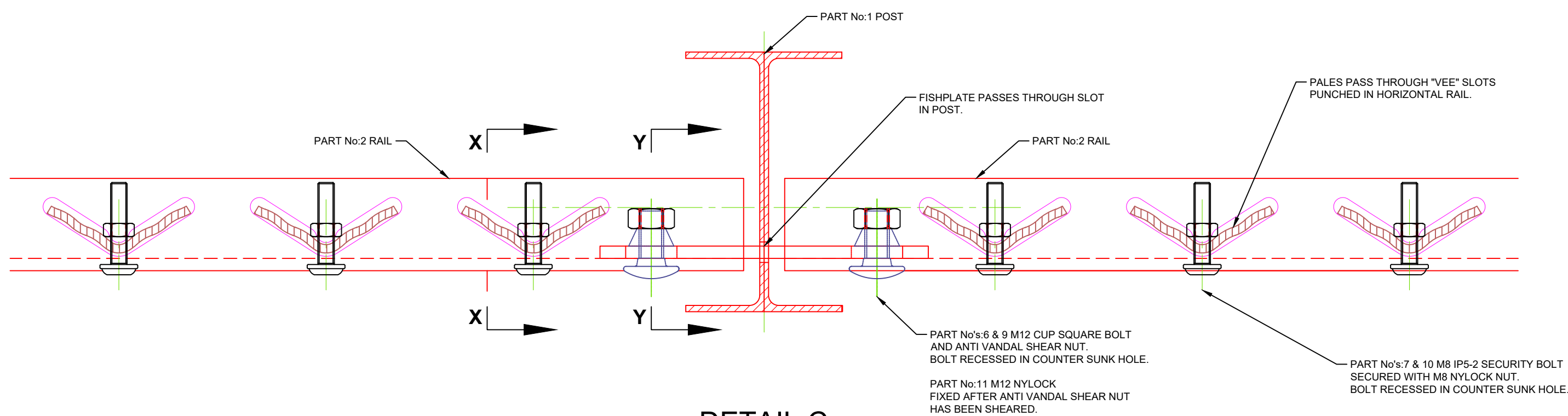
ELEVATION  
SCALE 1:10



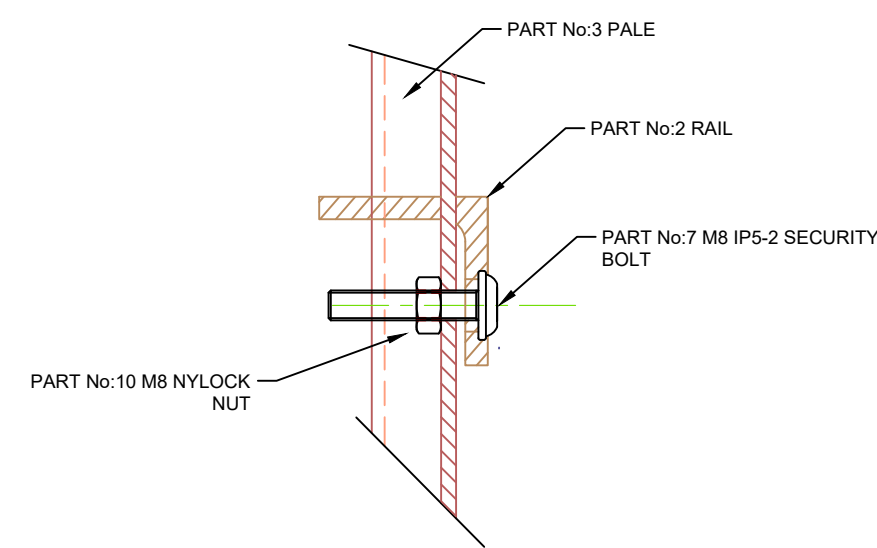
DETAIL D (CUT AWAY), FISHPLATE BAR, RAIL AND PALE ASSEMBLY  
SCALE 1:2



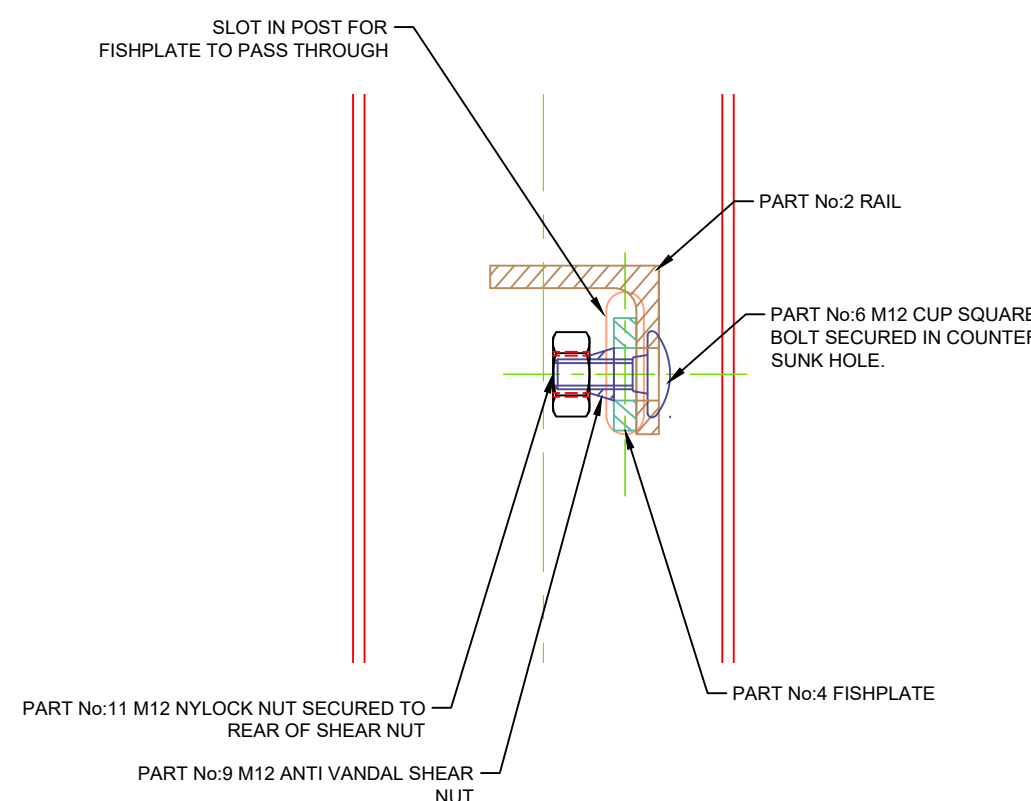
END ELEVATION  
SCALE 1:10



DETAIL C  
SECTION HORIZONTALLY THROUGH FENCE LINE  
SCALE 1:2



DETAIL A  
SECTION  
THROUGH PALE AND RAILS  
SCALE 1:2



DETAIL B  
SECTION THROUGH FISHPLATE  
SCALE 1:2

NOTES:

ALL MATERIALS TO CONFORM TO RELEVANT BRITISH STANDARDS

ALL PARTS TO BE GALVANISED AFTER MANUFACTURE, GALVANISING TO: BS, EN, ISO 1461

POLYESTER POWDER COATING ON REQUEST, POWDER COATING TO: BS 6497

LOCHRIN BAIN 'COMBI SR2' HIGH SECURITY PALISADE FENCING 2.4M HIGH

A STANDARD PANEL CONSISTS OF:

POSTS PART NUMBER:01	- 1 No. 127 x 76 x 13 kg/m Universal Beam
RAILS PART NUMBER:02	- 2 No. 50 x 50 x 6 Rolled Steel Angle 2730mm Long
PALES PART NUMBER:03	- 26 No. Min 3mm Thick Lochrin Pales (4mm Pales available on request)
FISHPLATE PART NUMBER:04	- 2 No. 30 x 8mm Thick Flat Bar 160mm Long
CENTRE REST PART NUMBER:05	- 2 No. 30 x 6mm Thick Flat Bar 335mm Long
FIXINGS A PART NUMBER:06	- 4 No. M12 Cup Square Bolt 30mm Long
FIXINGS B PART NUMBER:07	- 50 No. M8 IP5-2 Security Bolt 40mm Long, Grade 8.8, MAGNI 100HR.
FIXINGS C PART NUMBER:08	- 2 No. M8 IP5-2 Security Bolt 50mm Long, Grade 8.8, Magni 100HR.
FIXINGS D PART NUMBER:09	- 4 No. M12 Anti Vandal Shear Nut
FIXINGS E PART NUMBER:10	- 52 No. M8 Nylock Nuts
FIXINGS F PART NUMBER:11	- 4 No. M12 Nylock Nuts
WEIGHT:	- 69 / 823kgs PER METRE (2400 / 3000MM HIGH)

**PALES**  
HOT ROLLED SLIT COIL S275 BS EN 10025:1993 3mm THICK & 77mm WIDE, THIS IS THEN COLD FORMED INTO 'D' SECTION PALES 26 No PER STANDARD PANEL (2743mm Post Centres). THE PALES ARE HOLED TO SUIT SPECIFICATION AND ARE LOCKED INTO POSITION BY MEANS OF M8 IP5-2 SECURITY BOLTS & M8 NYLOCK NUT.

**POSTS**  
127mm x 76mm U.B x 3125 / 3925mm LONG POINTED AT TOP AND SLOTTED TO ACCOMMODATE CONNECTING BARS.

**HORIZONTAL SUPPORT RAILS**  
50mm x 50mm x 6mm RSA. HORIZONTALS HAVE 'V' SHAPED SLOTS ON THE TOP FLANGE TO ACCOMMODATE INSERTION OF THE PALES AND HAVE 10mm DIAMETER HOLES WHICH HAVE A 21mm DIAMETER COUNTERBORE ON THE FRONT FACE ALLOWING THE M8 BOLTS TO PASS THROUGH.

**INTERMEDIATE SUPPORT**  
30mm X 6mm FIXED BEHIND TWO PALES ON BOTTOM RAIL. SEE ELEVATION.

**FIXINGS**  
M12 X 30mm CUP SQUARE BOLTS & M12mm SHEAR NUTS FOR FIXING THE RAILS TO THE POSTS & AT INTERMEDIATE SUPPORT POINTS. M8 X 25mm CUP SQUARE BOLTS & M8 SHEAR NUTS FOR FIXING PALES TO RAILS.

ALL THE BOLTS SHOULD THEN BE TIGHTENED UNTIL THE HEXAGONAL HEAD SHEARS OFF THUS LEAVING A DOME ON EITHER SIDE, IF NO DOME IS EVIDENT THE FENCE IS NOT SECURED.

**PLEASE NOTE:** ALL DRAWINGS SHOW TWO DIMENSIONS WHEN RELATING TO HEIGHT, THE FIRST DIMENSION IS APPLICABLE TO 2.4M HIGH FENCES AND GATES AND THE SECOND DIMENSION IS APPLICABLE TO 3.0M HIGH FENCES AND GATES.

B	03.05.2020	Updated in accordance with BRE Comments.
A	20.04.2020	Updated in accordance with Physical Test.
Rev	Date	Comments

© All rights reserved  
The right of Lochrin Bain Ltd. to be the originator and owner of this work has been asserted in accordance with the Copyright, Patents and Designs Act 1988.  
This drawing may not be reproduced in whole or in part, stored in a retrieval system or transmitted by any means without the express permission of Lochrin Bain Ltd.  
PATENT PENDING UK PATENT APPLICATION NO. 000000.0



PERIMETER SECURITY MANUFACTURER  
EST. 1989

Lochrin Works, 7 Limekilns Road, Blairlinn Industrial Estate  
Cumbernauld, G67 2RN

Telephone: +44 (0) 1236 457333 Facsimile: +44 (0) 1236 451166  
Email: sales@lochrin-bain.co.uk Website: www.lochrin-bain.co.uk

DRAWING TITLE

Lochrin Combi™ SL2, 2.4 & 3.0m High  
Standard Panel Elevation & Details



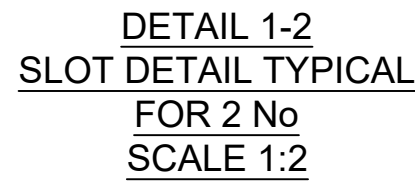
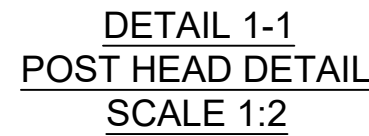
Approved to B3 (SR2)

LPS1175: Issue 8, Certificate Numbers: 1337m & 1337n

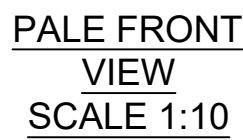
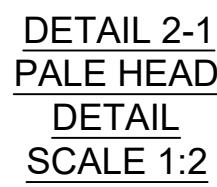
DRAWN BY Gary MacGregor	CHECKED BY -	DATE 28.01.2020	SCALE VARIES
DRAWING REF.No. COM/SR2/24/4/001	REVISION B		



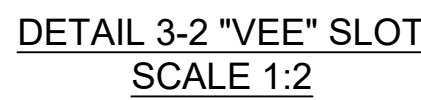
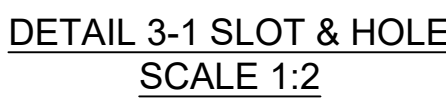
A1



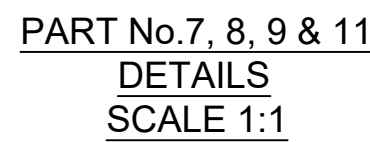
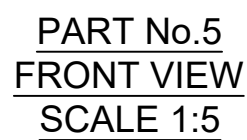
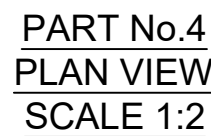
PART NO:1  
127 X 76 UB POST



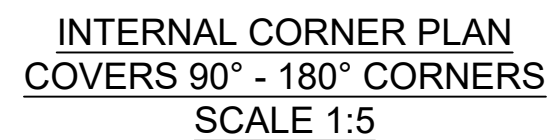
PART No3  
67-70 x 23 x 3  
THICK PALE



PART No. 2  
50 X 50 X 6 RSA



EXTERNAL CORNER PLAN  
COVERS 90° - 175° CORNERS  
SCALE 1:5



\* FIXED DIMENSIONS FOR ALL HEIGHTS OF FENCE.  
\*\* DIMENSION VARIES DEPENDING ON SPECIFIED HEIGHT, PLEASE REFER TO ELEVATION.

**PLEASE NOTE:** ALL DRAWINGS SHOW TWO DIMENSIONS WHEN RELATING TO HEIGHT. THE FIRST DIMENSION IS APPLICABLE TO 2.4M HIGH FENCES AND GATES AND THE SECOND DIMENSION IS APPLICABLE TO 3.0M HIGH FENCES AND GATES.

B	03.05.2020	Updated in accordance with BRE Comments.
A	20.04.2020	Updated in accordance with Physical Test.
Rev	Date	Comments

© All rights reserved.  
The right of Lochrin Bain Ltd. to be the originator and owner of this work has been asserted in accordance with the Copyright, Patents and Designs Act 1988.  
This drawing may not be reproduced in whole or in part, stored in a retrieval system or transmitted by any means without the express permission of Lochrin Bain Ltd.  
PATENT PENDING UK PATENT APPLICATION NO. 000000.0



**Telephone:** +44 (0) 1236 457333 **Facsimile:** +44 (0) 1236 451166  
**Email:** sales@lochrin-bain.co.uk **Website:** www.lochrin-bain.co.uk

## Lochrin Combi™ SL2, 2.4 / 3.0m High Standard Panel Elevation & Details



LPS1175: Issue 8, Certificate Numbers: 1337m & 1337n

DRAWN BY Gary MacGregor	CHECKED BY -	DATE 28.01.2020	SCALE VARIES
-------------------------------	-----------------	--------------------	-----------------

DRAWING REF.No.  
**COM/SR2/24/4/002**

REVISION  
B

2750 STANDARD POST CENTRES

2718 POST CENTRES REDUCED TO ACCOMODATE SLOPING PANEL

2750 STANDARD POST CENTRES

2400 (HEIGHT OF FENCE)

50

30°  
MAXIMUM GRADIENT1200MM  
MAXIMUM STEPGRADIENT PANEL  
SCALE 1:10

## PLEASE NOTE:

"The current fence heights (2.4 m and 3.0 m) meets the minimum height requirements of 2.0 metres for Security Rating B3 (SR2) within LPS 1175: Issue 8 when installed on the maximum 30 degree gradient. However, if a client requires the fence height to be 2.4 m or 3.0 m around the whole perimeter on this maximum 30 degree gradient, please speak to Lochrin Bain for the necessary fence bay heights installed on this maximum gradient"

B	07.05.2020	Note re: fence height added.
A	20.04.2020	Updated in accordance with Physical Test.
Rev	Date	Comments

© All rights reserved  
The right of Lochrin Bain Ltd. to be the originator and owner of this work has been asserted in accordance with the Copyright, Patents and Designs Act 1988.  
This drawing may not be reproduced in whole or in part, stored in a retrieval system or transmitted by any means without the express permission of Lochrin Bain Ltd.  
PATENT PENDING UK PATENT APPLICATION NO. 000000.0

PERIMETER SECURITY MANUFACTURER  
EST. 1989Lochrin Works, 7 Limekilns Road, Blairlinn Industrial Estate  
Cumbernauld, G67 2RNTelephone: +44 (0) 1236 457333 Facsimile: +44 (0) 1236 451166  
Email: sales@lochrin-bain.co.uk Website: www.lochrin-bain.co.uk

## DRAWING TITLE

Lochrin Combi™SL2, 2.4 / 3.0m High  
Gradient Details

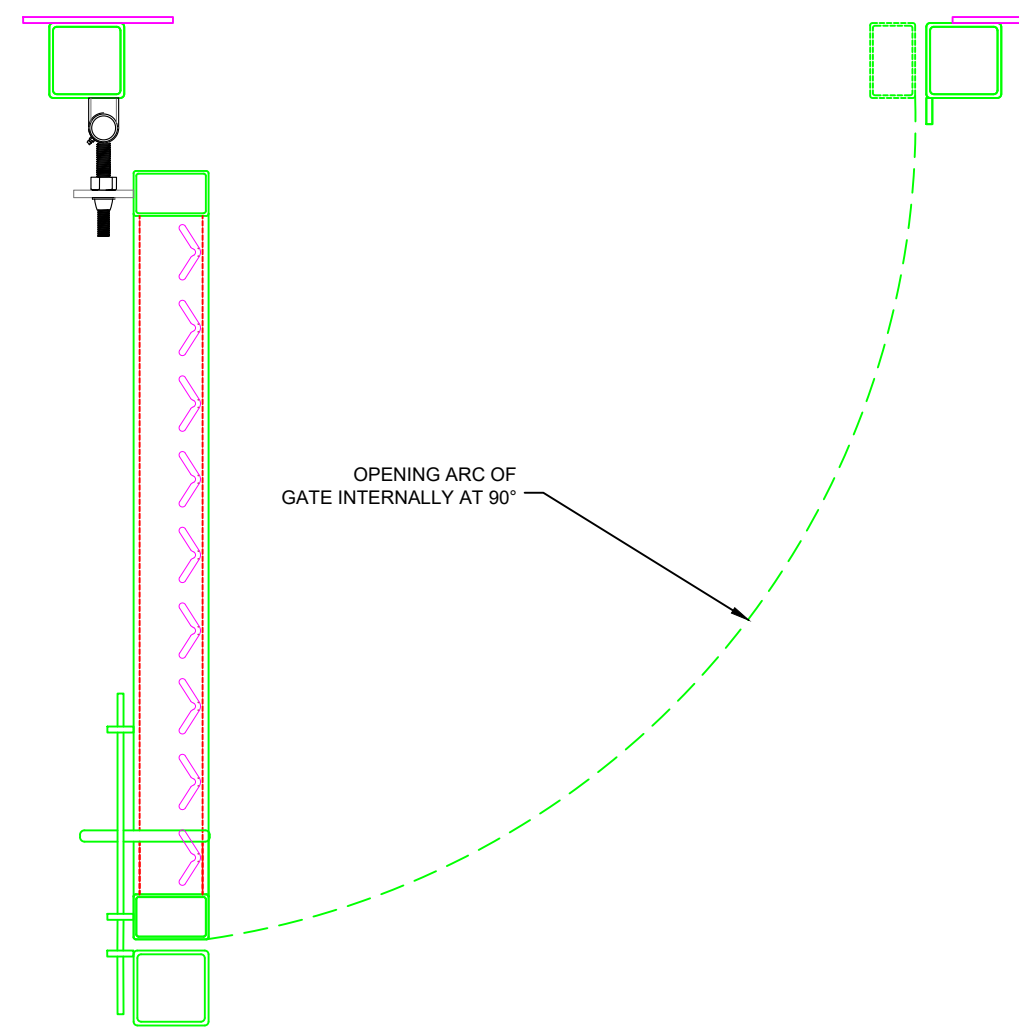
Approved to B3 (SR2)

LPS1175: Issue 8, Certificate Numbers: 1337m &amp; 1337n

DRAWN BY Gary MacGregor	CHECKED BY -	DATE 28.01.2020	SCALE VARIES
----------------------------	-----------------	--------------------	-----------------

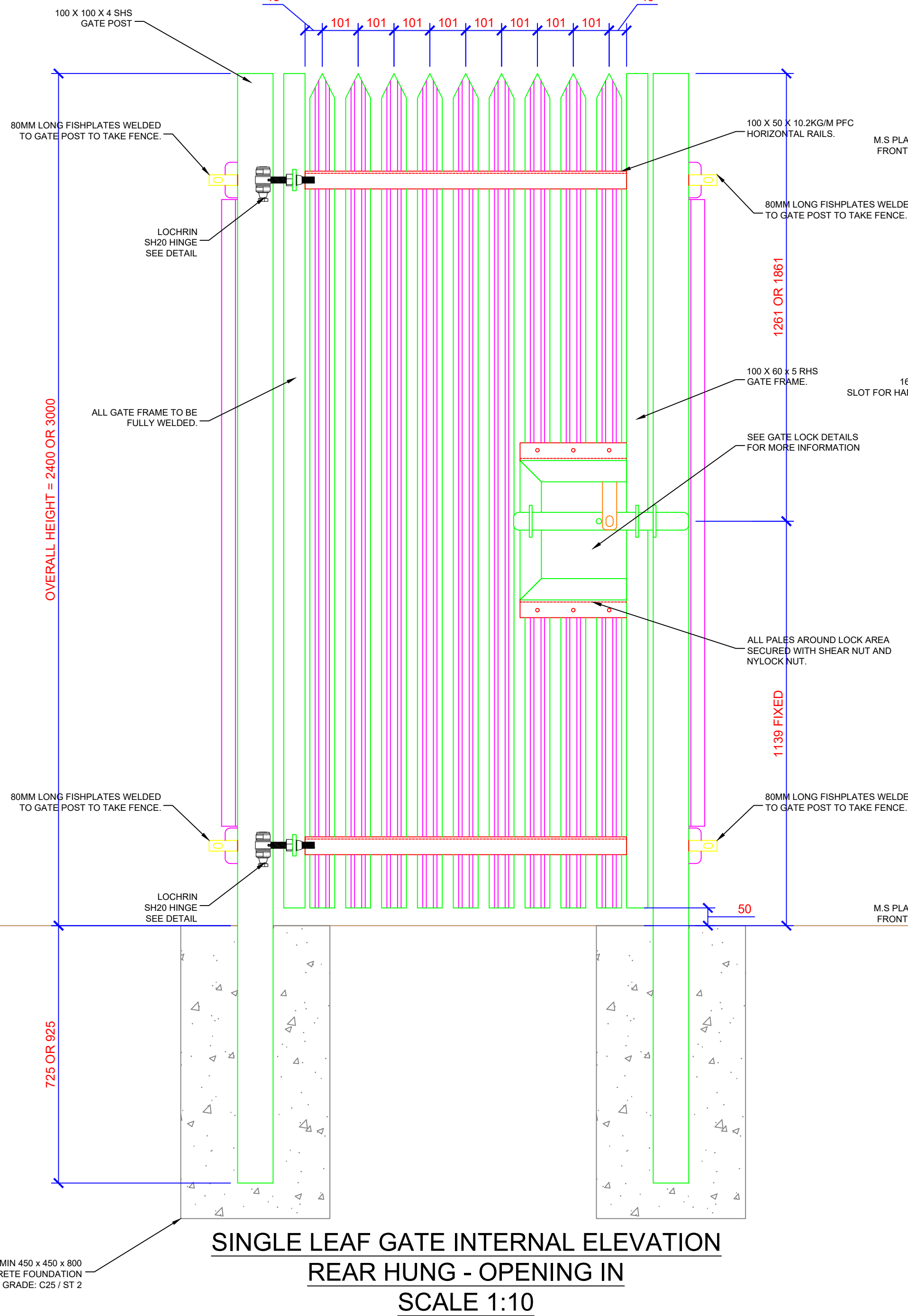
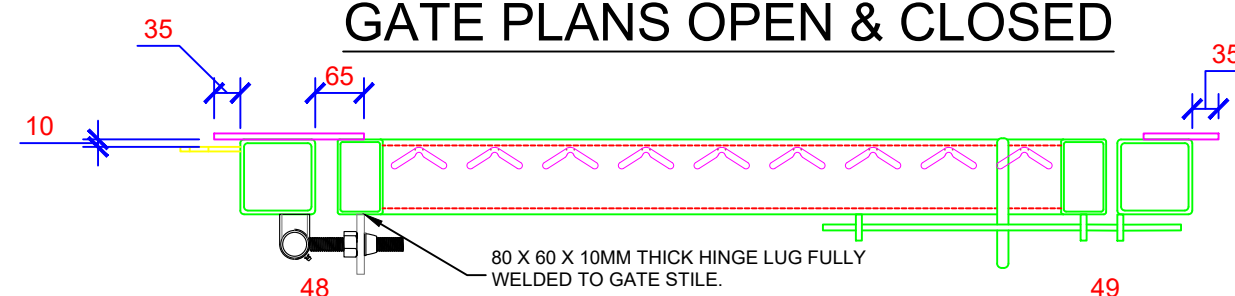
DRAWING REF.No. COM/SR2/24/4/003	REVISION B
-------------------------------------	---------------



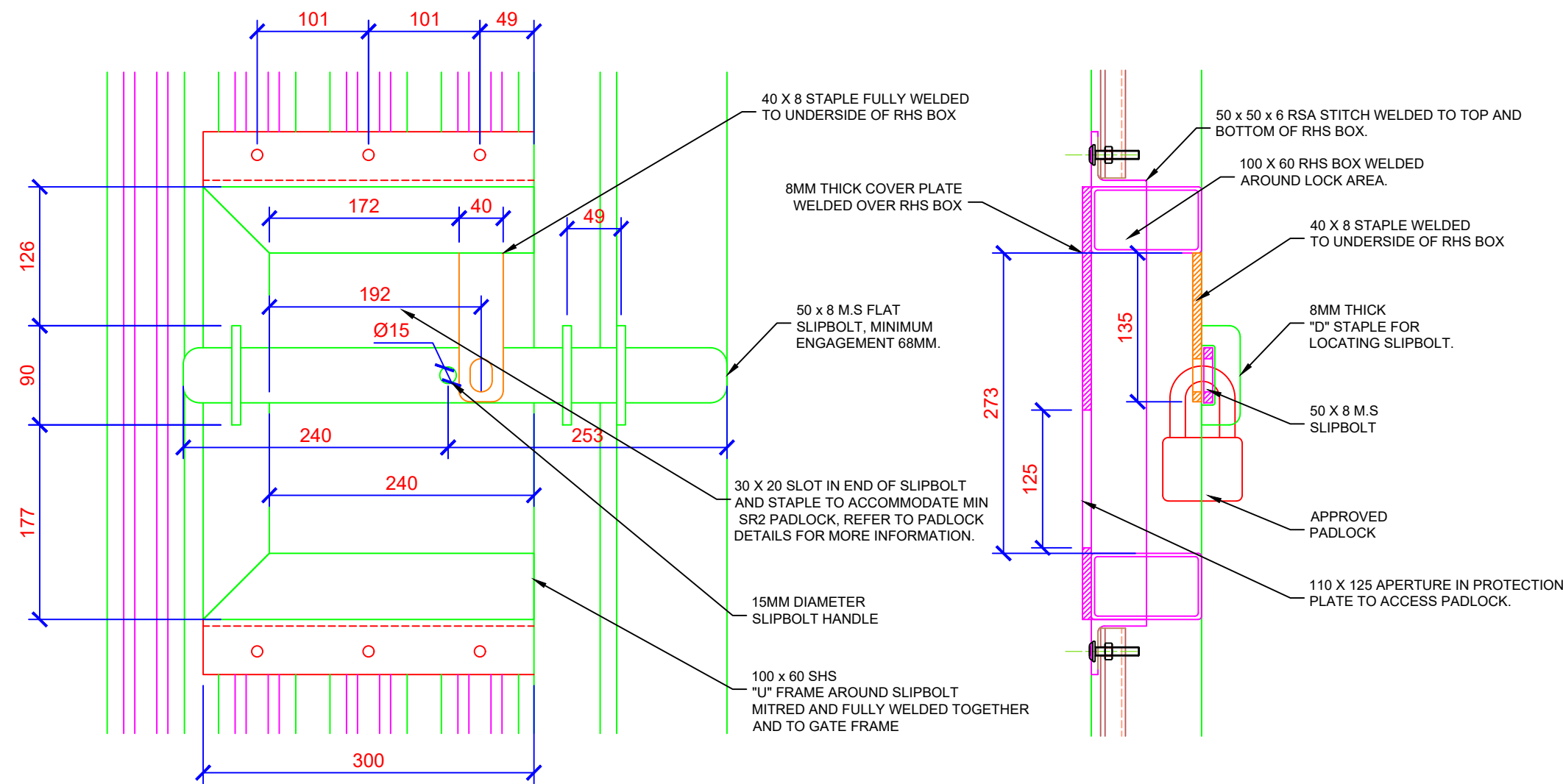


**IMPORTANT NOTE:**  
VERTICAL SUPPORT BARS TO BE INSTALLED ON ALL GATES WHERE THE LEAF SIZE EXCEEDS 1.1M AND THEN INSTALLED AT NO MORE THAN 1.2M CENTRES THEREAFTER.

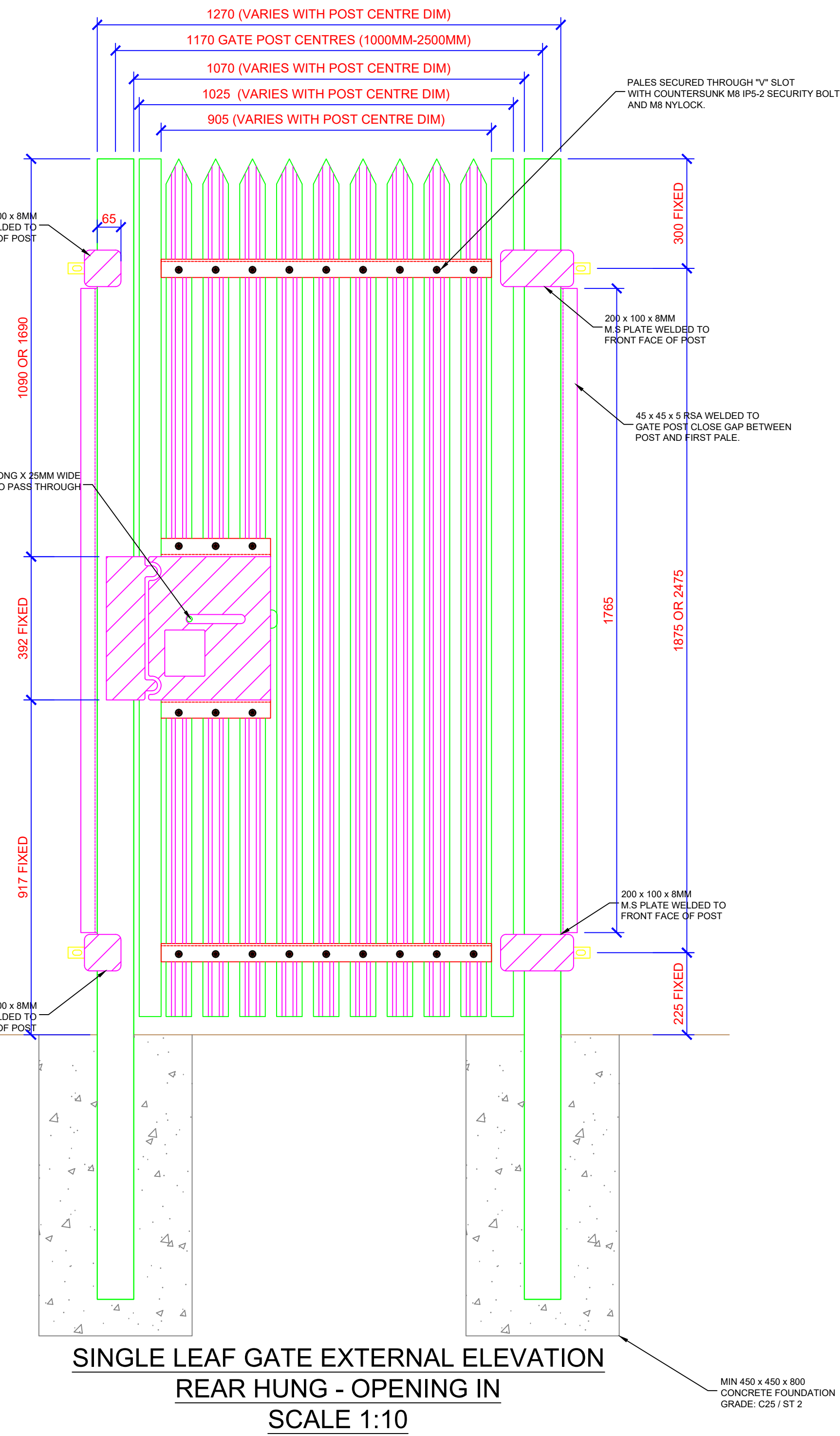
### GATE PLANS OPEN & CLOSED



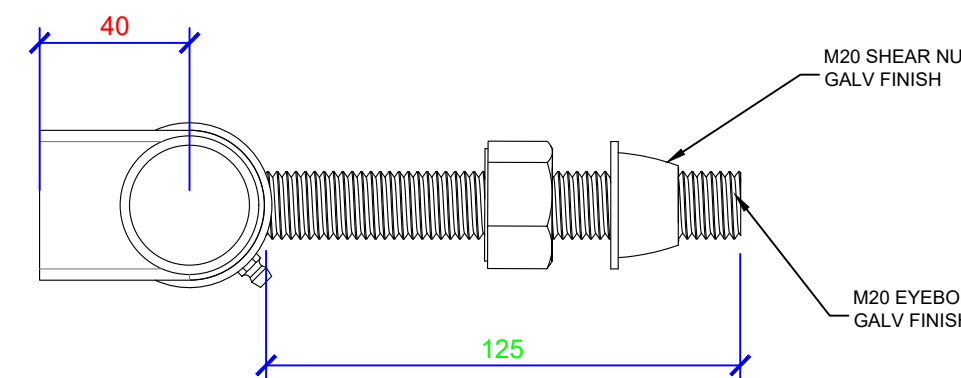
**SINGLE LEAF GATE INTERNAL ELEVATION**  
**REAR HUNG - OPENING IN**  
**SCALE 1:10**



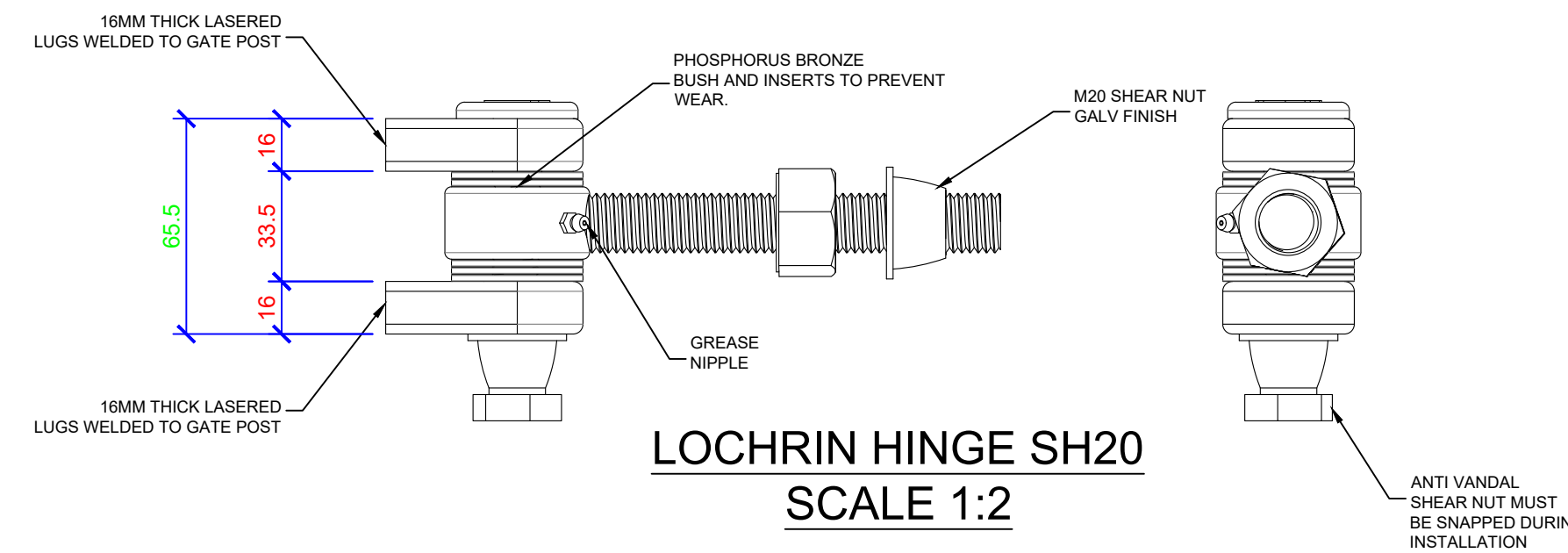
**LOCKING ARRANGEMENT**  
**SCALE 1:5**



**SINGLE LEAF GATE EXTERNAL ELEVATION**  
**REAR HUNG - OPENING IN**  
**SCALE 1:10**



**LOCHRIN HINGE SH20**  
**SCALE 1:2**



**IMPORTANT NOTE:**  
FOR THE GATES TO BE COMPLIANT THEY MUST BE FITTED WITH THE PADLOCKS BELOW -

- 1) SQUIRE SS50S STRONGHOLD 50MM HARDENED STEEL PADLOCK - OPEN SHACKLE.
- 2) ASSA ABLOY PL340 / PL350

TO ENSURE COMPLIANCE WITH LPCB, AN LPS 1654 ISSUE 1 SECURITY RATING 2 AND ABOVE CERTIFIED PADLOCK SHOULD BE SUPPLIED AND FITTED.

Rev	Date	Comments
B	12.10.2020	RSA added to gate posts to close pale/post gap.
A	20.04.2020	Updated in accordance with Physical Test.

© All rights reserved.  
The right of Lochrin Bain Ltd. to be the originator and owner of this work has been asserted in accordance with the Copyright, Patents and Designs Act 1988.  
This drawing may not be reproduced in whole or in part, stored in a retrieval system or transmitted by any means without the express permission of Lochrin Bain Ltd.  
PATENT PENDING UK PATENT APPLICATION NO. 000000.0



**PERIMETER SECURITY MANUFACTURER**

EST. 1999

Lochrin Works, 7 Limekilns Road, Blairlinn Industrial Estate  
Cumbernauld, G67 2RN

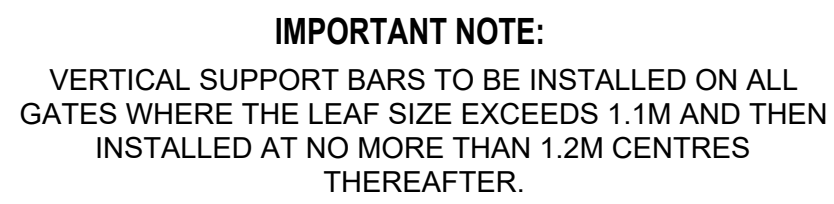
Telephone: +44 (0) 1236 457333 Facsimile: +44 (0) 1236 451166  
Email: sales@lochrin-bain.co.uk Website: www.lochrin-bain.co.uk

**DRAWING TITLE**  
**Lochrin Combi™ SL2, 2.4 / 3.0m High**  
**Rear Hung Single Leaf Gate Details**

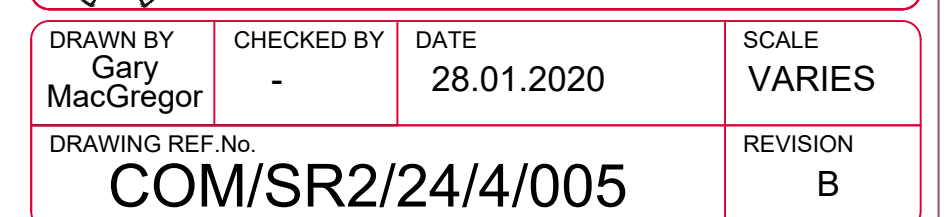
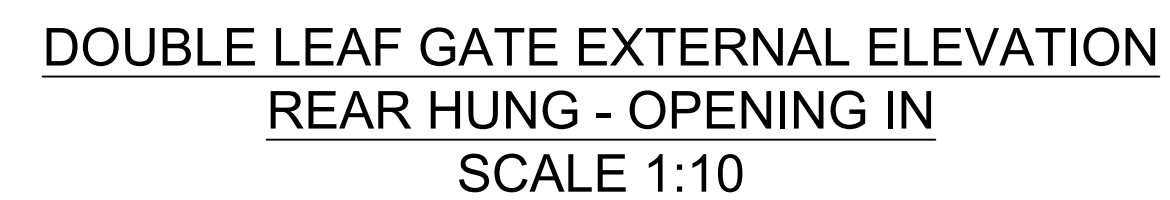
**Approved to B3 (SR2)**  
LPS1175: Issue 8, Certificate Numbers: 1337m & 1337n

**DRAWN BY** Gary MacGregor  
**CHECKED BY** -  
**DATE** 28.01.2020  
**SCALE** VARIES

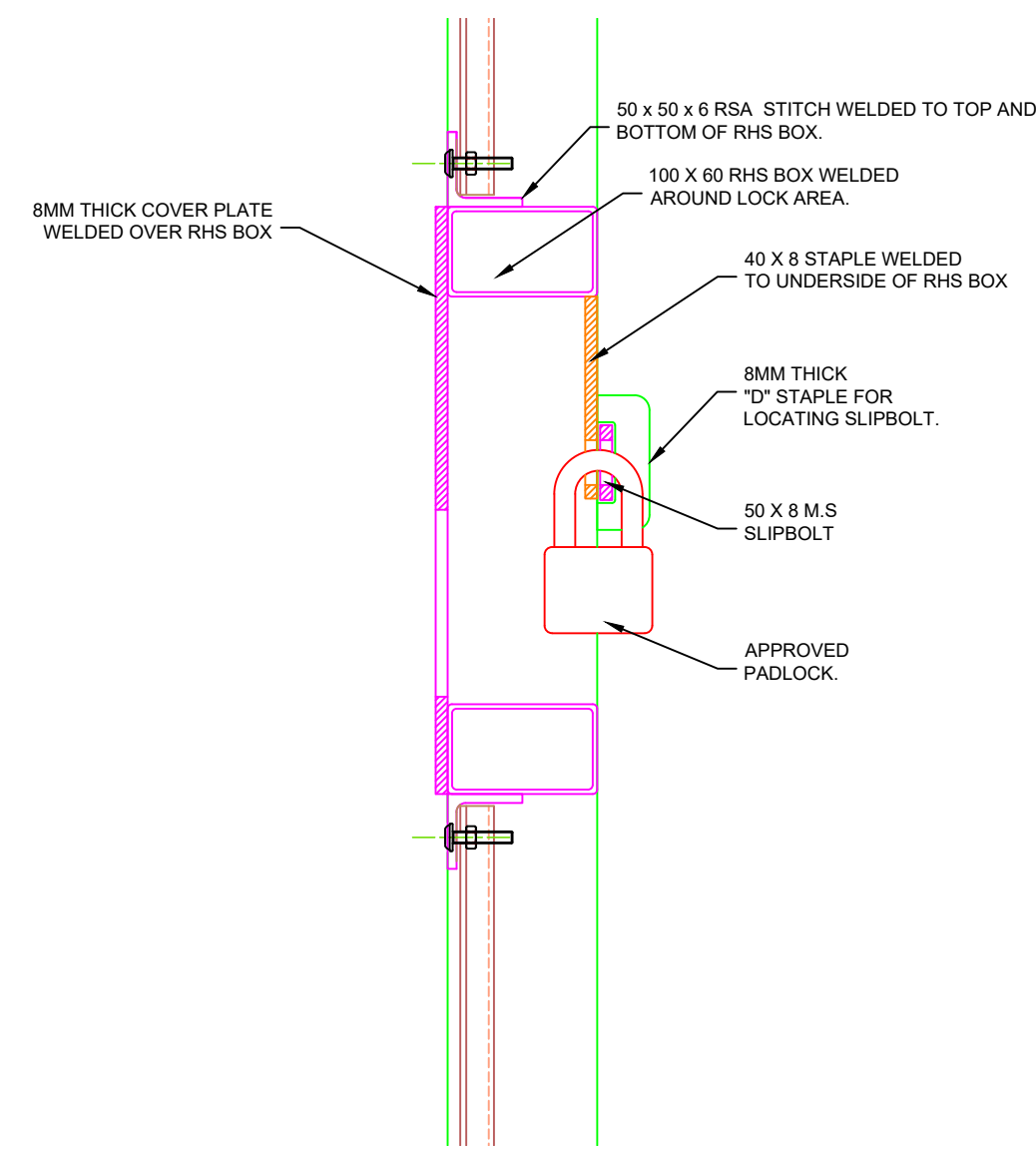
**DRAWING REF.No.** COM/SR2/24/4/004  
**REVISION** B



TO ENSURE COMPLIANCE WITH LPCB, AN LPS 1654 ISSUE 1  
SECURITY RATING 2 AND ABOVE CERTIFIED PADLOCK  
SHOULD BE SUPPLIED AND FITTED.

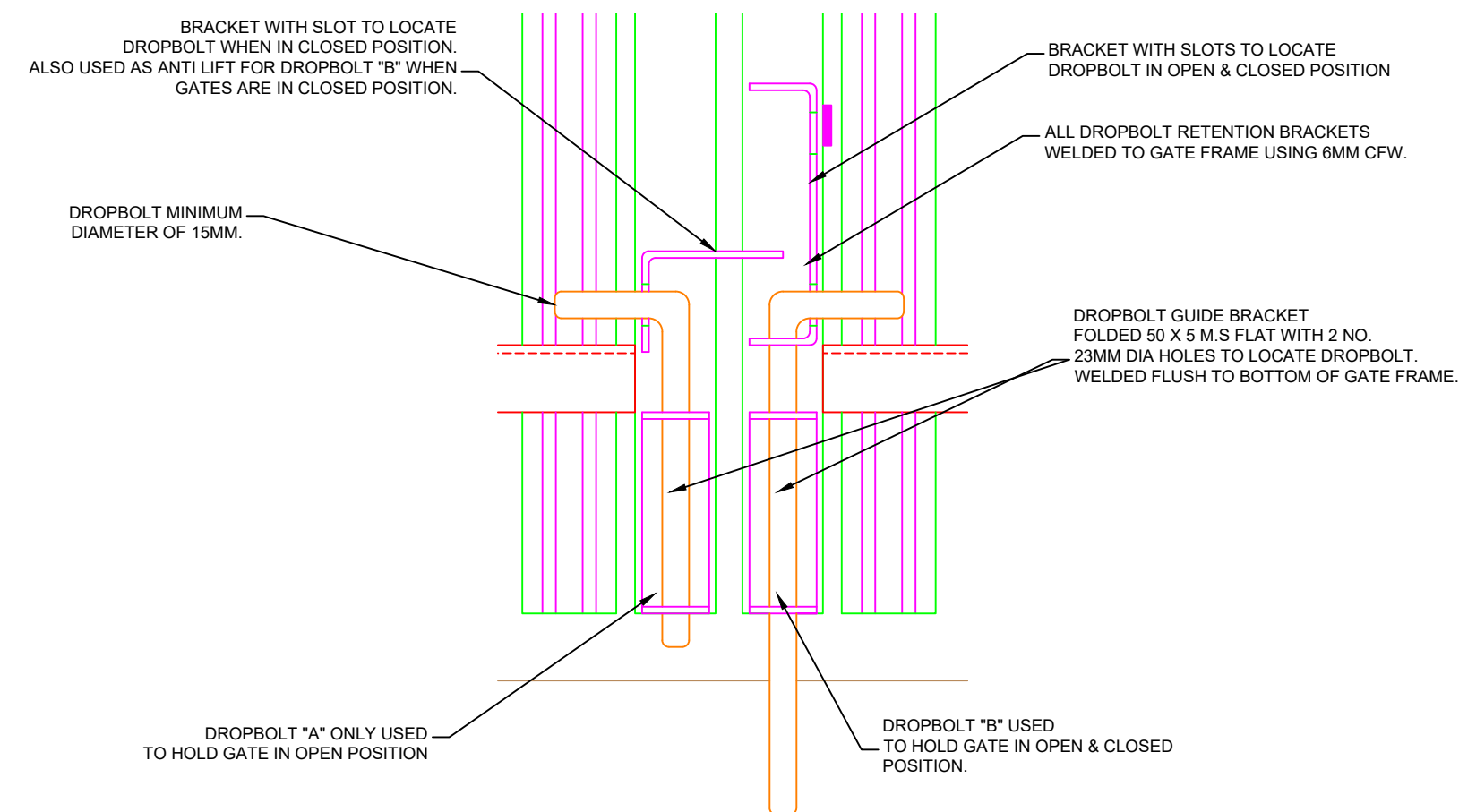




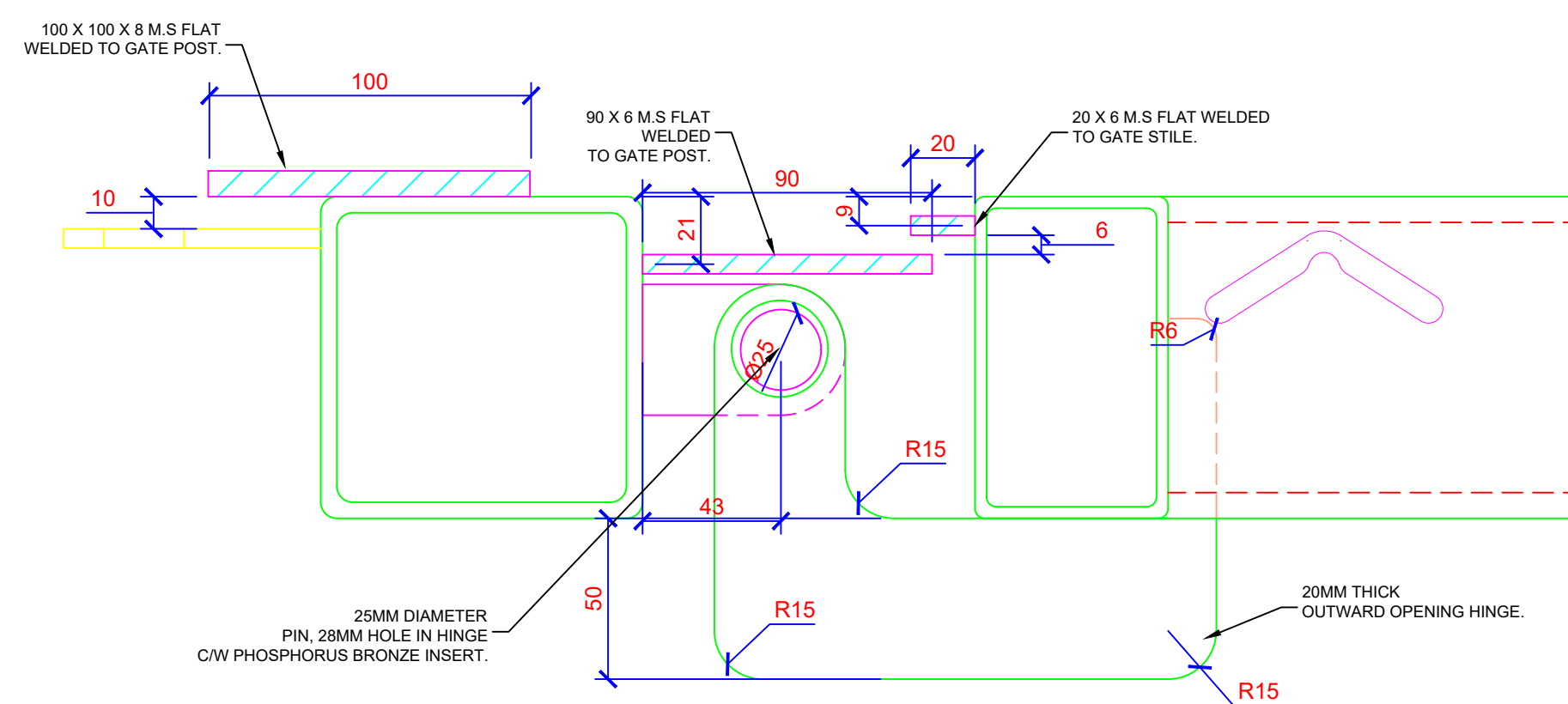


LOCK DETAIL  
EXTERNAL VIEW  
SCALE 1:5

LOCK DETAIL  
SECTION THROUGH  
SCALE 1:5



DROPBOLT ARRANGEMENT  
SCALE 1:5



LOCHRIN OUTWARD OPENING HINGE ARRANGEMENT  
OPENING OUT GATES  
SCALE 1:2

TO ENSURE COMPLIANCE WITH LPCB, AN LPS 1654 ISSUE 1  
SECURITY RATING 2 AND ABOVE, CERTIFIED PADLOCK  
SHOULD BE SUPPLIED AND FITTED.

B	04.06.2020	Outward opening hinge detail added.
A	20.04.2020	Updated in accordance with Physical Test.
<b>Rev</b>	<b>Date</b>	<b>Comments</b>

© All rights reserved

The right of Lochrin Bain Ltd. to be the originator and owner of this work has been asserted in accordance with the Copyright, Patents and Designs Act 1988.

This drawing may not be reproduced in whole or in part, stored in a retrieval system or transmitted by any means without the express permission of Lochrin Bain Ltd.

PATENT PENDING UK PATENT APPLICATION NO. 000000.0



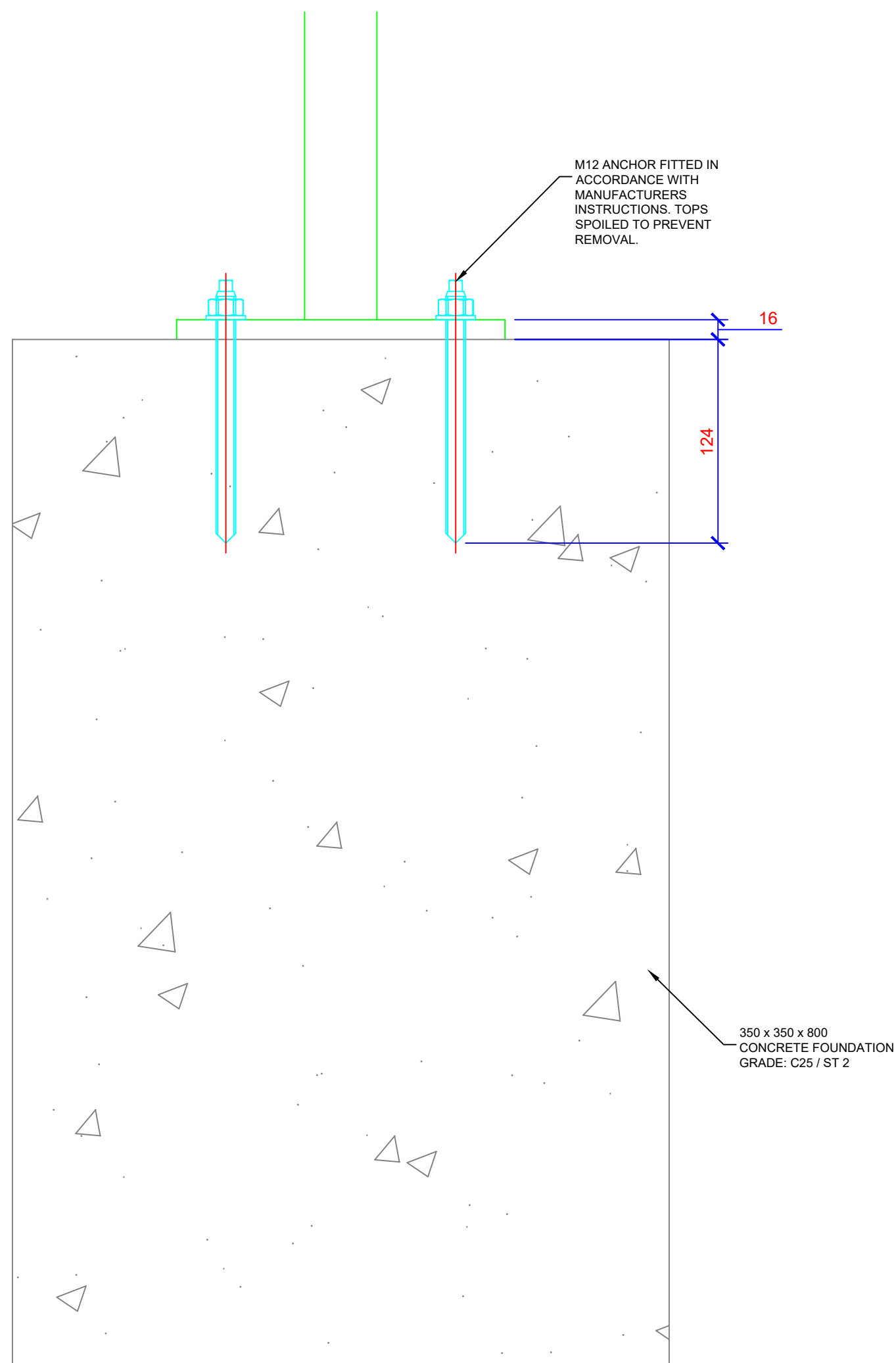
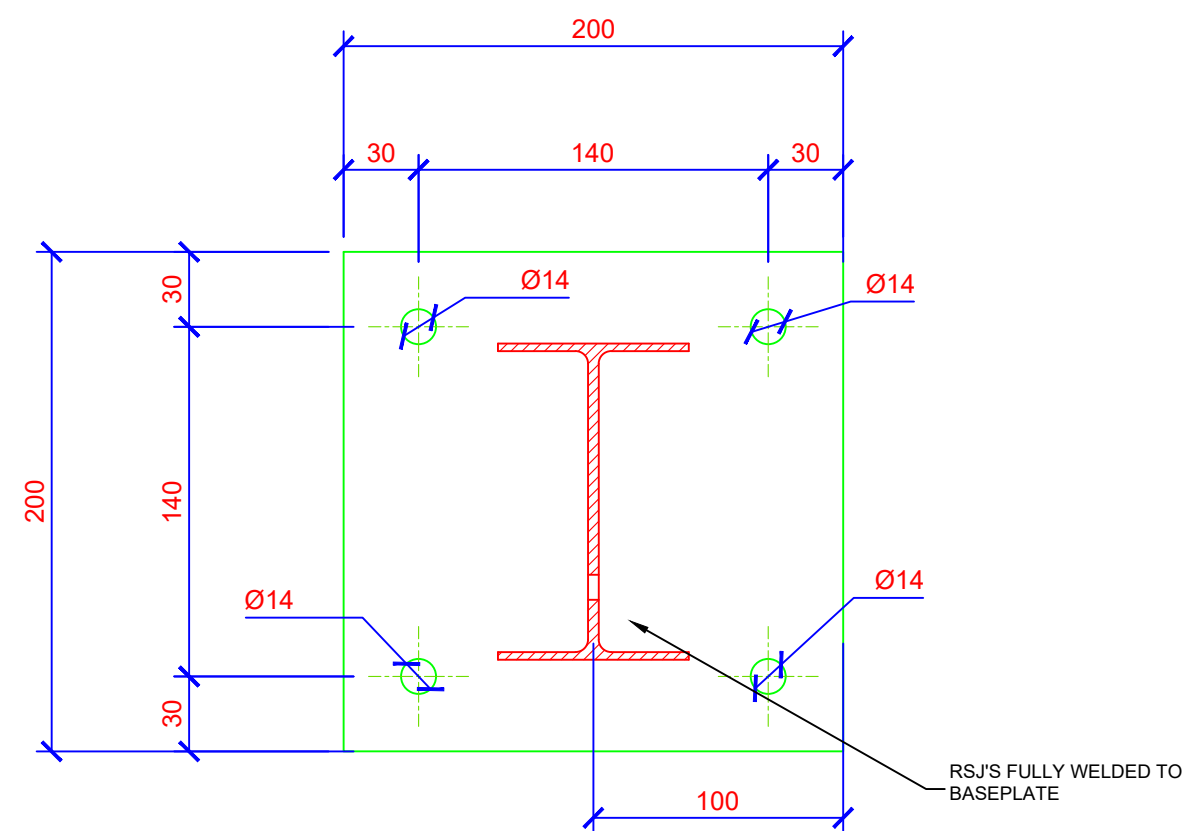
**Telephone:** +44 (0) 1236 457333 **Facsimile:** +44 (0) 1236 451166  
**Email:** sales@lochrin-bain.co.uk **Website:** www.lochrin-bain.co.uk

## Lochrin Combi™ SL2, 2.4 / 3.0m High Double Leaf Gate Details

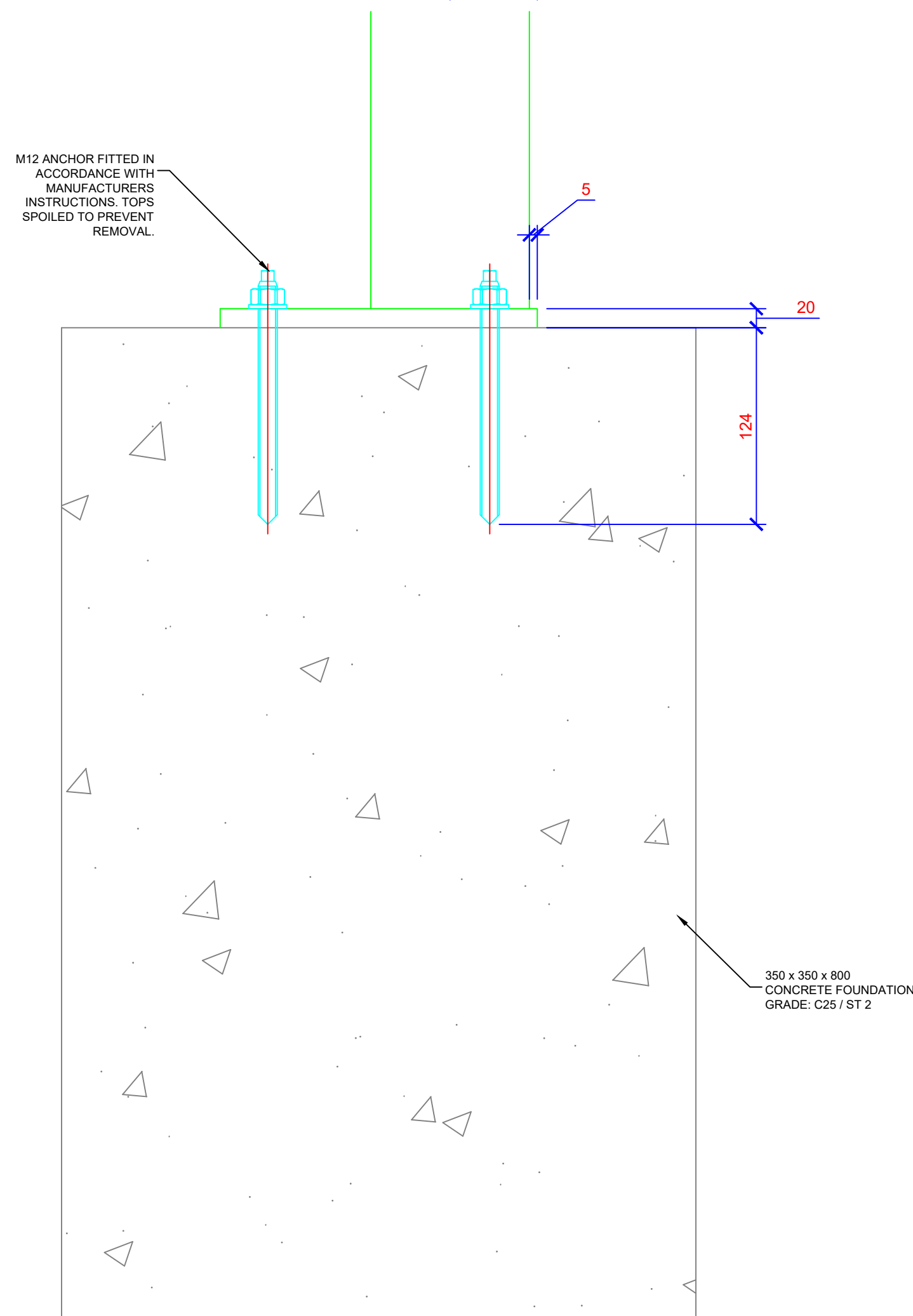
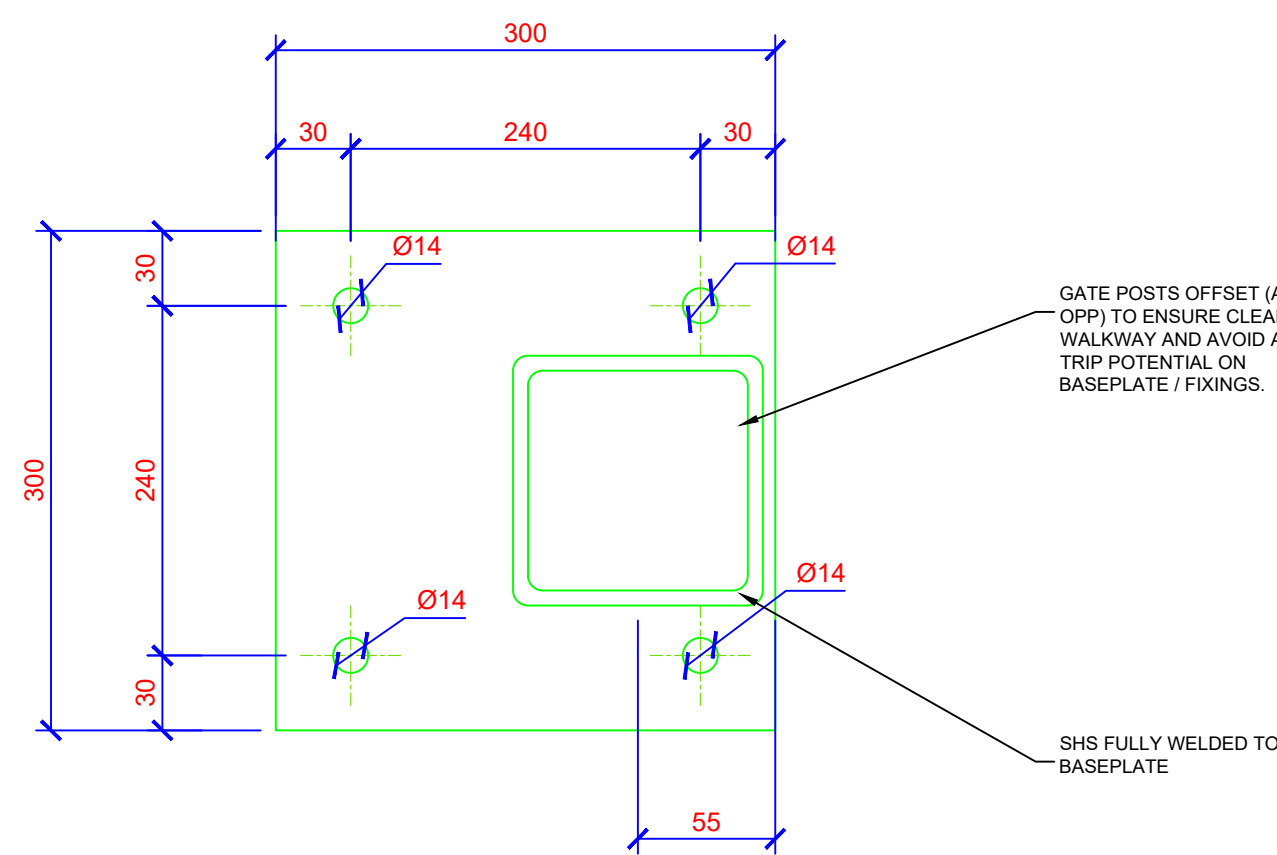


LPS1175: Issue 8, Certificate Numbers: 1337m & 1337n

DRAWN BY Gary MacGregor	CHECKED BY -	DATE 28.01.2020	SCALE VARIES
DRAWING REF.No. COM/SR2/24/4/006			REVISION B



STANDARD BOLT DOWN DETAIL  
FOR INTERMEDIATE / END POSTS  
SCALE 1:5



STANDARD BOLT DOWN DETAIL  
FOR GATE POSTS  
SCALE 1:5

A	20.04.2020	Updated in accordance with Physical Test.
Rev	Date	Comments

© All rights reserved.  
The right of Lochrin Bain Ltd. to be the originator and owner of this work has been asserted in accordance with the Copyright, Patents and Designs Act 1988.  
This drawing may not be reproduced in whole or in part, stored in a retrieval system or transmitted by any means without the express permission of Lochrin Bain Ltd.  
PATENT PENDING UK PATENT APPLICATION NO. 000000.0



PERIMETER SECURITY MANUFACTURER  
EST. 1999

Lochrin Works, 7 Limekilns Road, Blairlinn Industrial Estate  
Cumbernauld, G67 2RN  
Telephone: +44 (0) 1236 457333 Facsimile: +44 (0) 1236 451166  
Email: sales@lochrin-bain.co.uk Website: www.lochrin-bain.co.uk

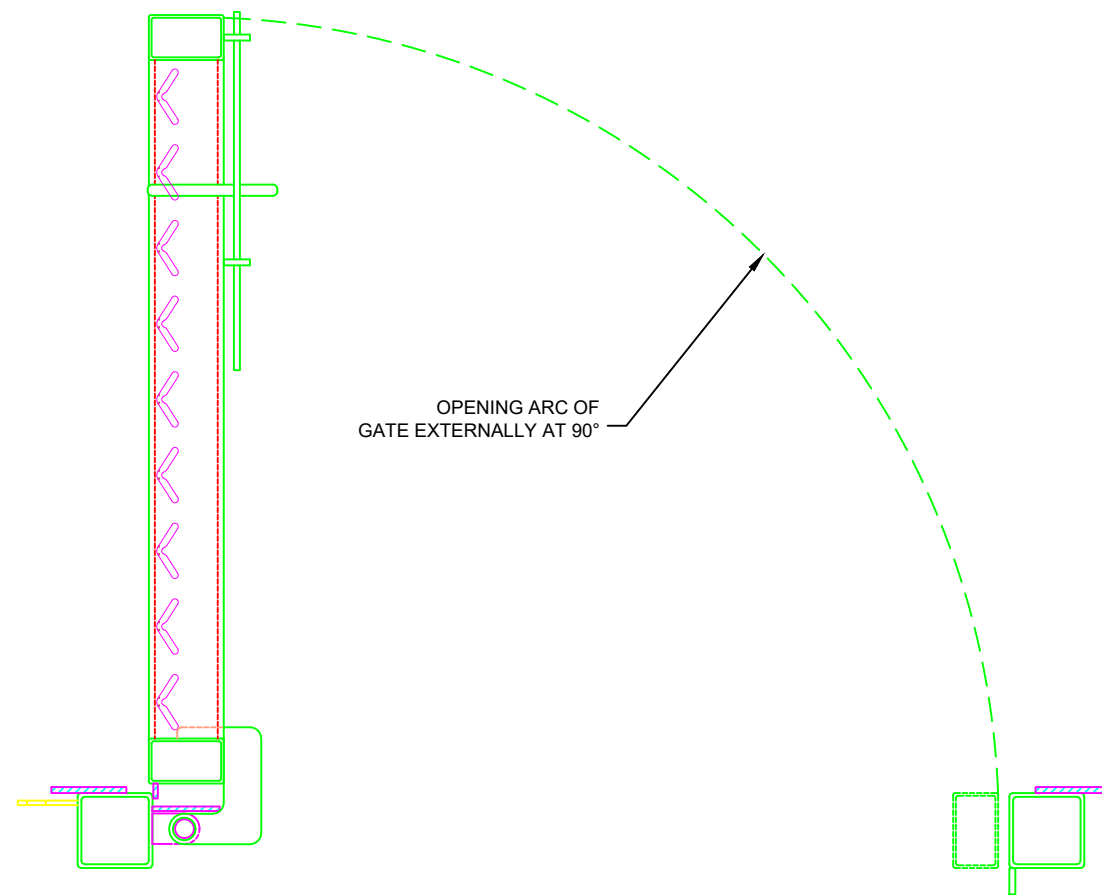
DRAWING TITLE  
Lochrin Combi™ SL2, 2.4 / 3.0m High  
Boltdown Post Details

 Approved to B3 (SR2)  
LPS1175: Issue 8, Certificate Numbers: 1337m & 1337n

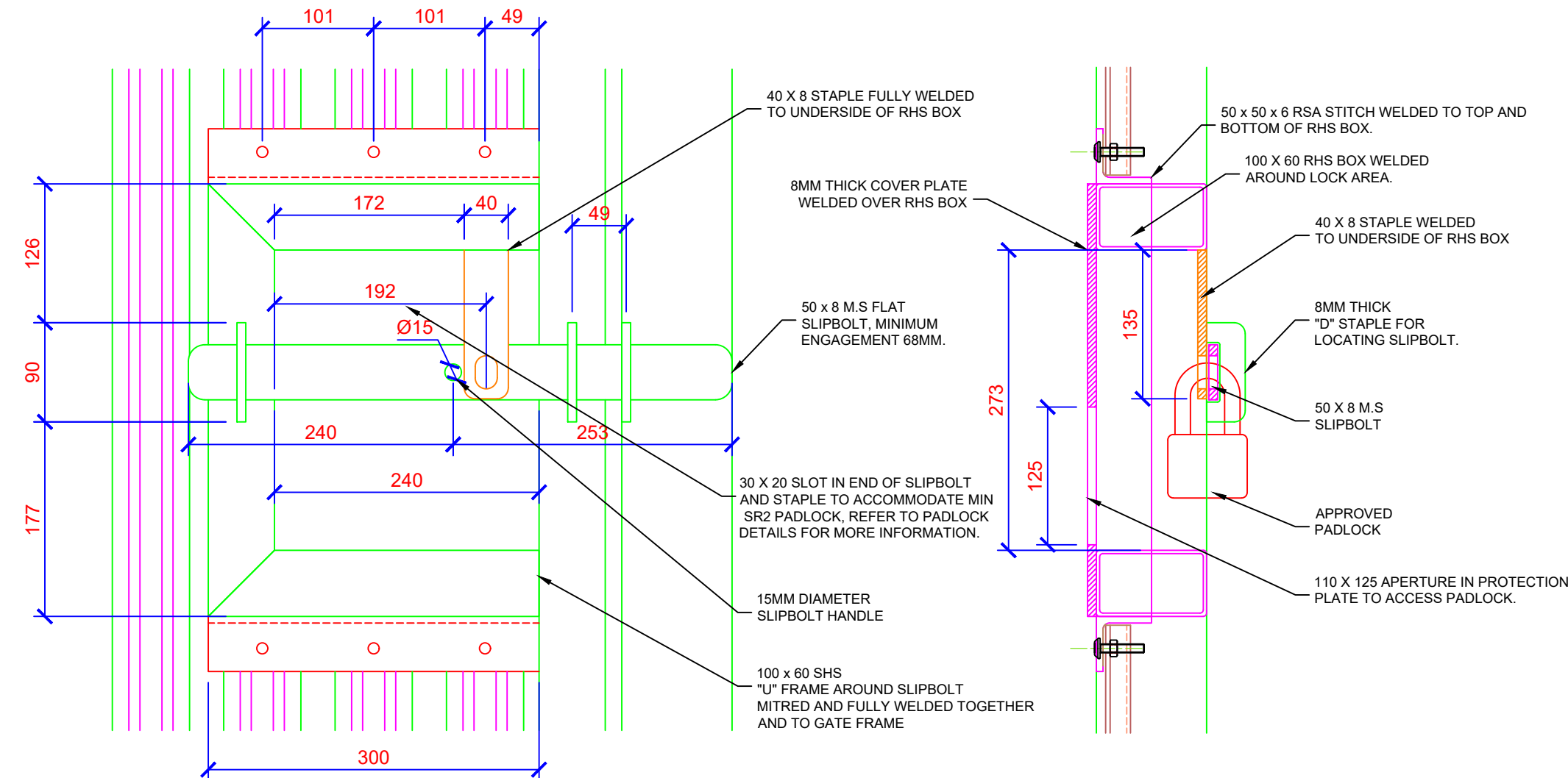
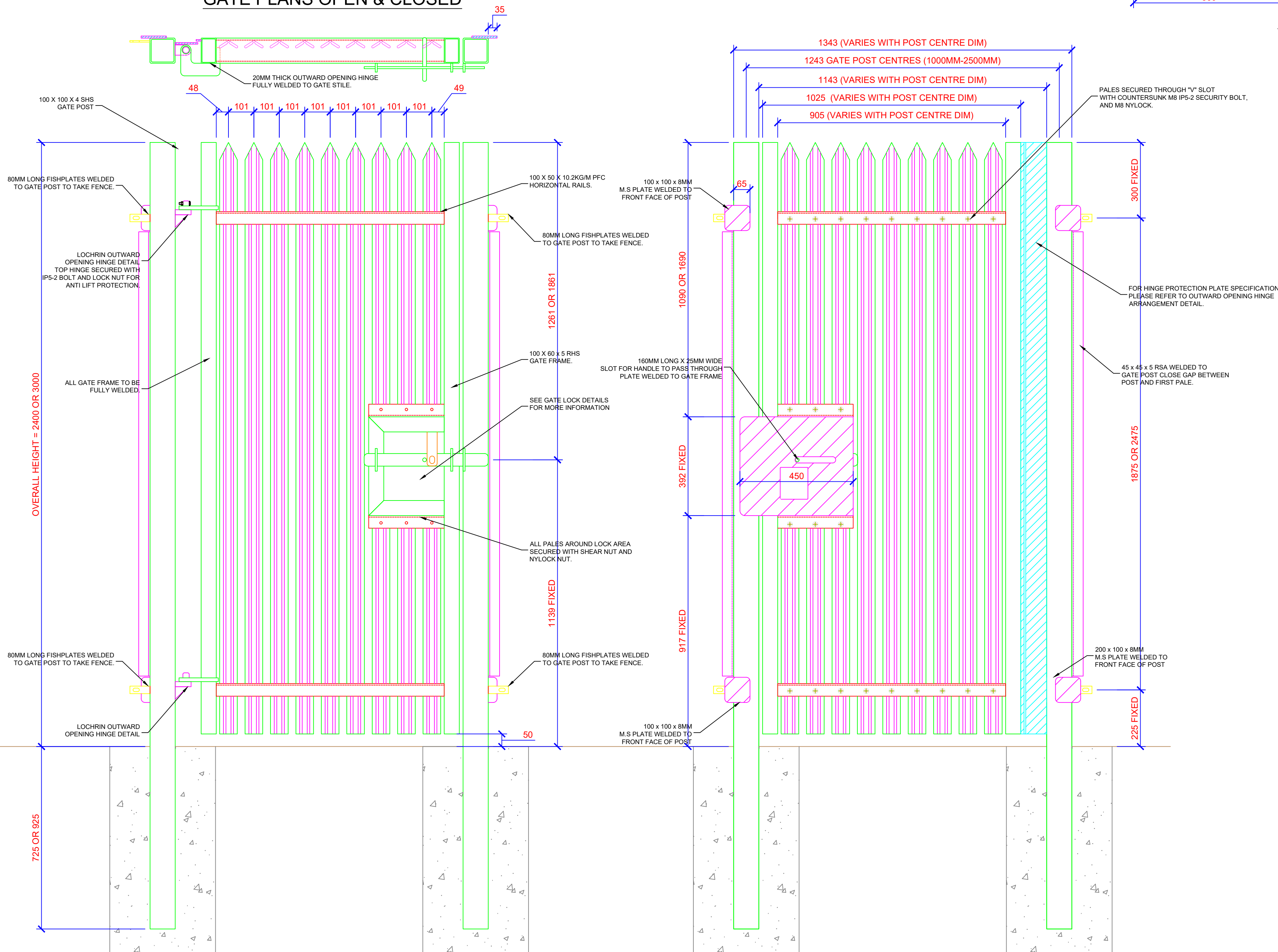
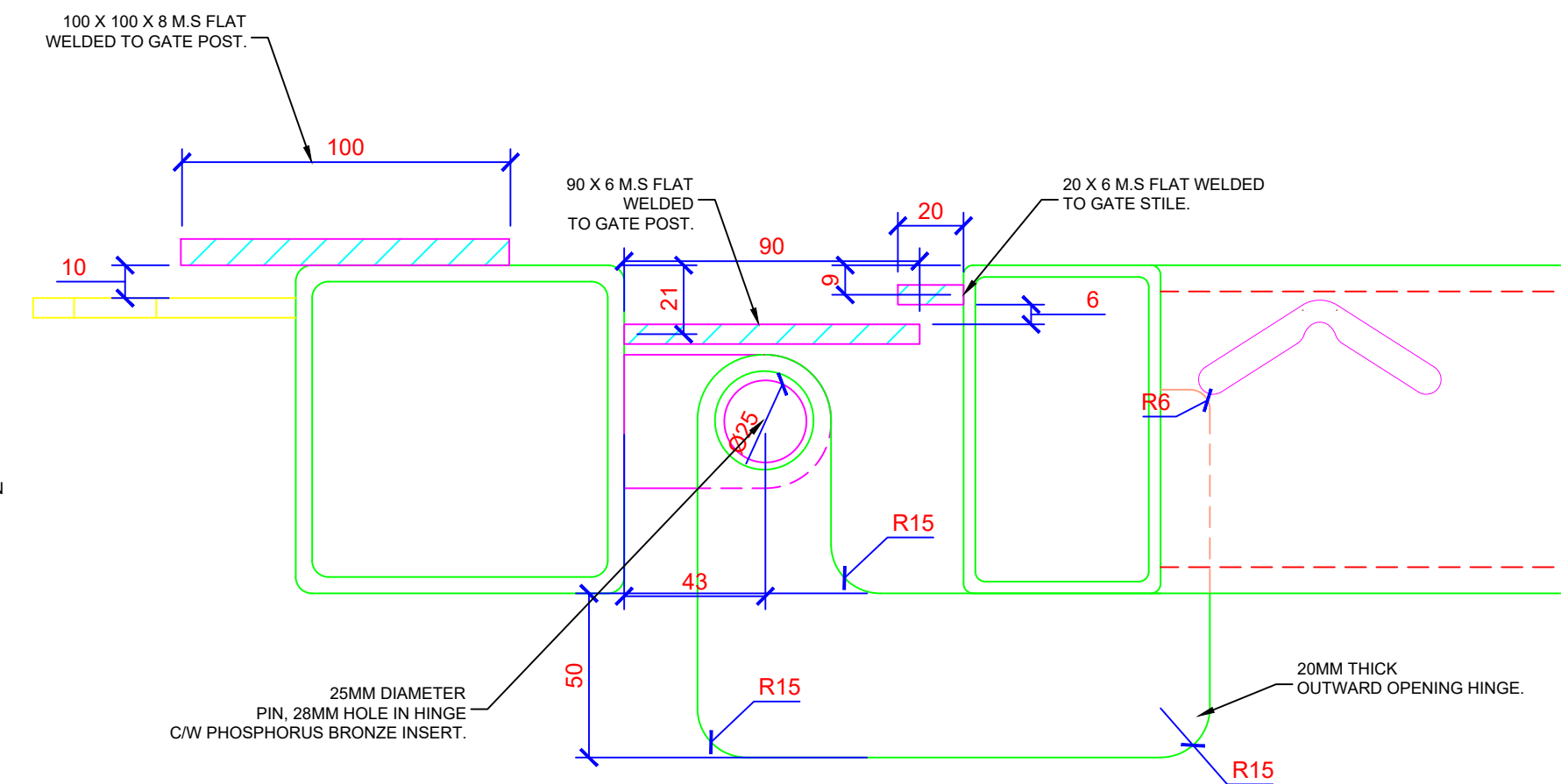
DRAWN BY Gary MacGregor	CHECKED BY -	DATE 28.01.2020	SCALE VARIES
----------------------------	-----------------	--------------------	-----------------

DRAWING REF.No. COM/SR2/24/4/007	REVISION A
-------------------------------------	---------------





GATE PLANS OPEN &amp; CLOSED

LOCKING ARRANGEMENT  
SCALE 1:5SINGLE LEAF GATE INTERNAL ELEVATION  
CENTRE HUNG - OPENING OUT  
SCALE 1:10SINGLE LEAF GATE EXTERNAL ELEVATION  
CENTRE HUNG - OPENING OUT  
SCALE 1:10LOCHRIN OUTWARD OPENING HINGE  
ARRANGEMENT  
SCALE 1:2

## IMPORTANT NOTE:

FOR THE GATES TO BE COMPLIANT THEY MUST BE FITTED WITH THE PADLOCKS BELOW -

- 1) SQUIRE SS50S STRONGHOLD 50MM HARDENED STEEL PADLOCK - OPEN SHACKLE.
- 2) ASSA ABLOY PL340 / PL350

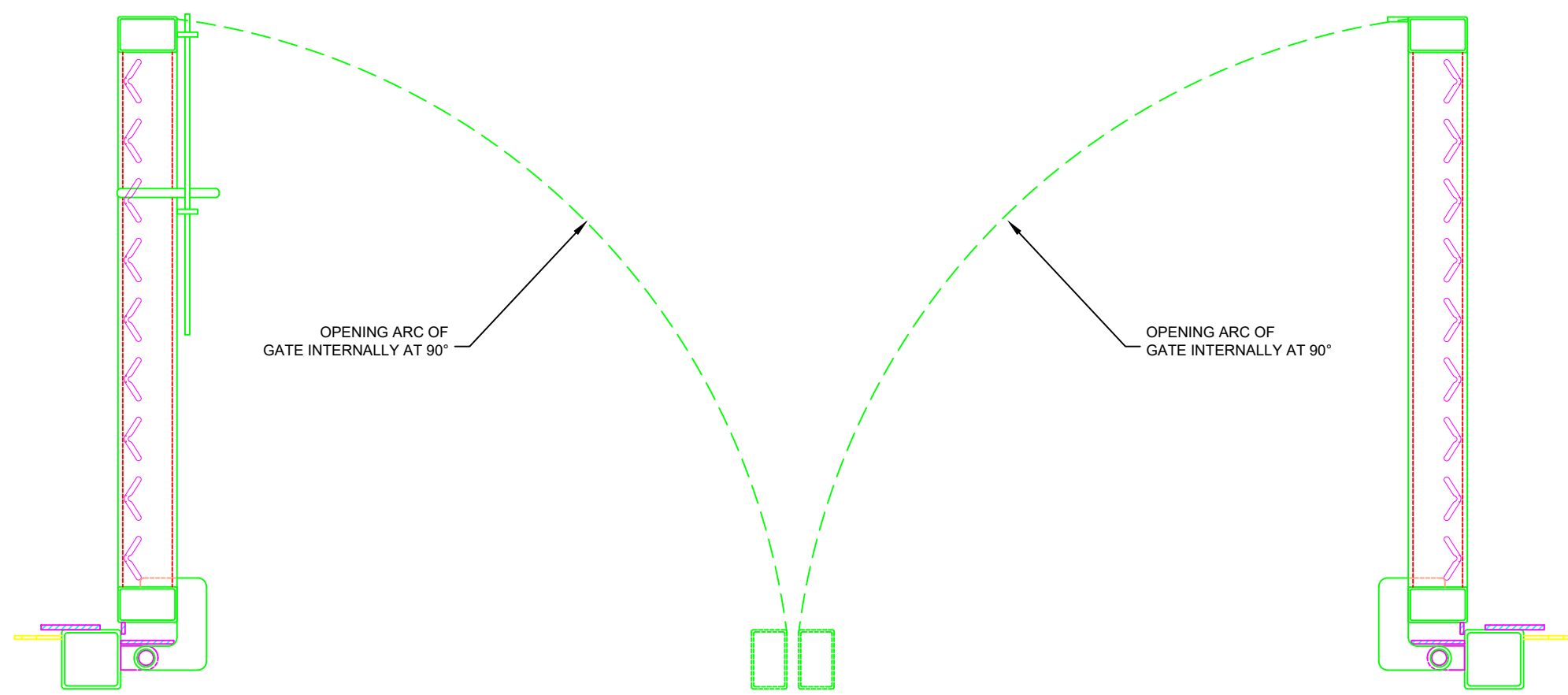
TO ENSURE COMPLIANCE WITH LPCB, AN LPS 1654 ISSUE 1 SECURITY RATING 2 AND ABOVE CERTIFIED PADLOCK SHOULD BE SUPPLIED AND FITTED.

Rev	Date	Comments
B	12.10.2020	RSA added to gate posts to close pale/post gap.
A	05.06.2020	Long protection plate revised for opening out detail

© All rights reserved.  
The right of Lochrin Bain Ltd. to be the originator and owner of this work has been asserted in accordance with the Copyright, Patents and Designs Act 1988.  
This drawing may not be reproduced in whole or in part, stored in a retrieval system or transmitted by any means without the express permission of Lochrin Bain Ltd.  
PATENT PENDING UK. PATENT APPLICATION NO. 000000.0

PERIMETER SECURITY MANUFACTURER  
EST. 1999Lochrin Works, 7 Limekilns Road, Blairlinn Industrial Estate  
Cumbernauld, G67 2RNTelephone: +44 (0) 1236 457333 Facsimile: +44 (0) 1236 451166  
Email: sales@lochrin-bain.co.uk Website: www.lochrin-bain.co.ukDRAWING TITLE  
Lochrin Combi™ SL2, 2.4 / 3.0m High  
Centre Hung Single Leaf Gate Details  
Opening OutApproved to B3 (SR2)  
LPS1175: Issue 8, Certificate Numbers: 1337m & 1337nDRAWN BY  
Gary MacGregorCHECKED BY  
-DATE  
03.06.2020SCALE  
VARIESDRAWING REF.No.  
COM/SR2/24/4/008REVISION  
B





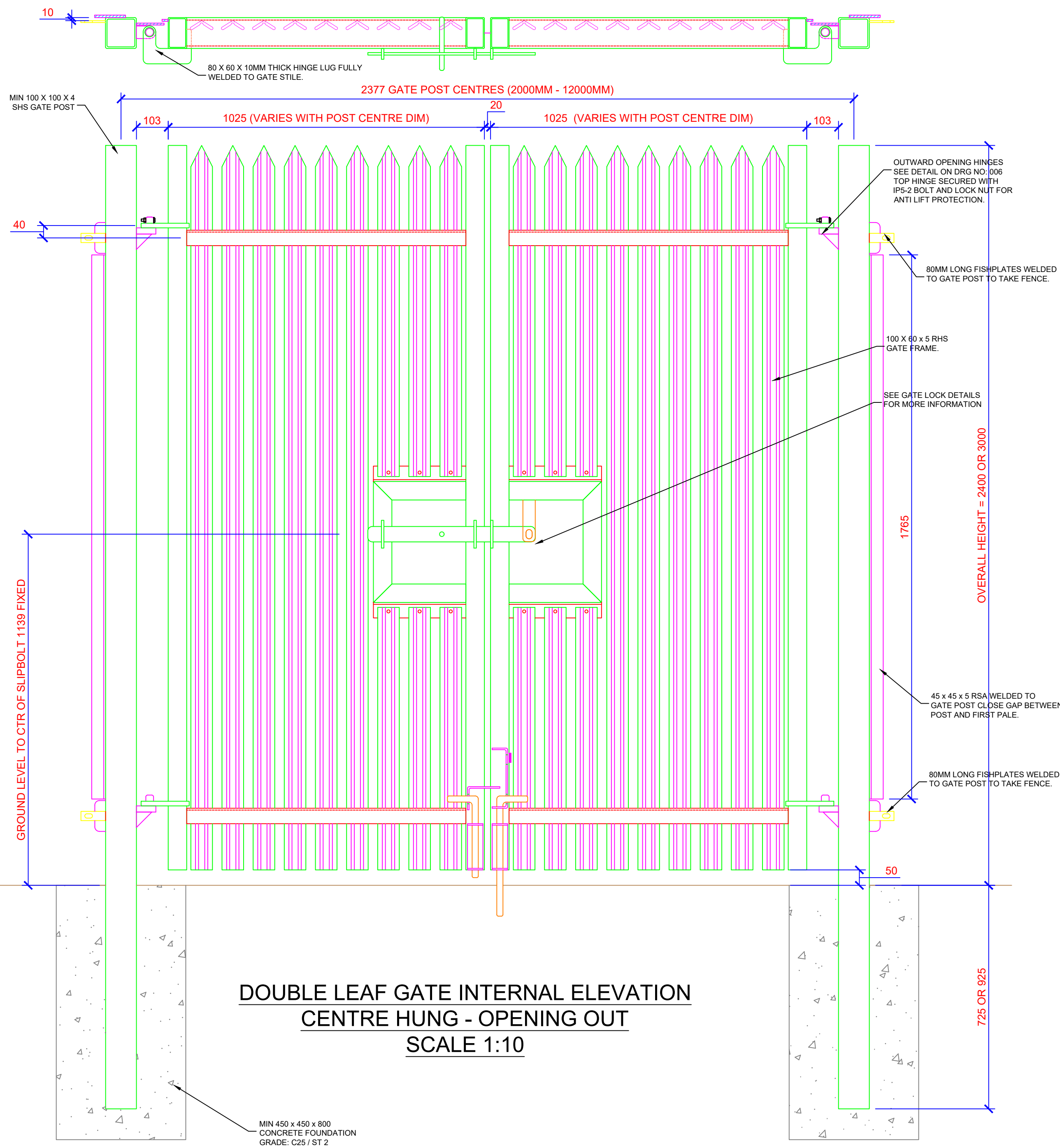
**GATE PLANS OPEN & CLOSED**  
**SCALE 1:10**

**IMPORTANT NOTE:**  
VERTICAL SUPPORT BARS TO BE INSTALLED ON ALL GATES WHERE THE LEAF SIZE EXCEEDS 1.1M AND THEN INSTALLED AT NO MORE THAN 1.2M CENTRES THEREAFTER.

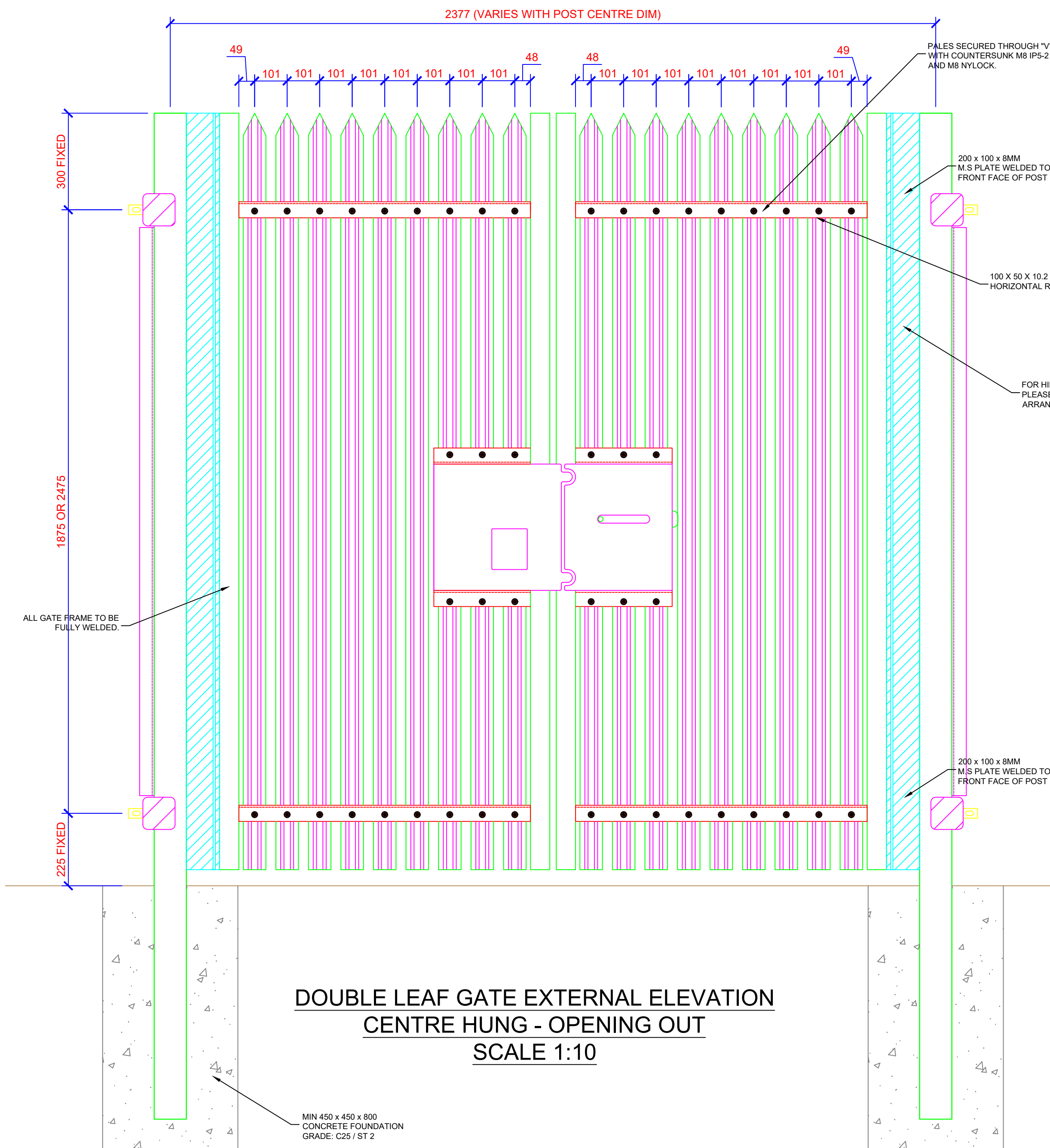
**IMPORTANT NOTE:**  
FOR THE GATES TO BE COMPLIANT THEY MUST BE FITTED WITH THE PADLOCKS BELOW -

- 1) SQUIRE SS50S STRONGHOLD 50MM HARDENED STEEL PADLOCK - OPEN SHACKLE.
- 2) ASSA ABLOY PL340 / PL350

TO ENSURE COMPLIANCE WITH LPCB, AN LPS 1654 ISSUE 1 SECURITY RATING 2 AND ABOVE CERTIFIED PADLOCK SHOULD BE SUPPLIED AND FITTED.



**DOUBLE LEAF GATE INTERNAL ELEVATION**  
**CENTRE HUNG - OPENING OUT**  
**SCALE 1:10**



**DOUBLE LEAF GATE EXTERNAL ELEVATION**  
**CENTRE HUNG - OPENING OUT**  
**SCALE 1:10**

Rev	Date	Comments
A	12.10.2020	RSA added to gate posts to close pale/post gap.

© All rights reserved.  
The right of Lochrin Bain Ltd. to be the originator and owner of this work has been asserted in accordance with the Copyright, Patents and Designs Act 1988.  
This drawing may not be reproduced in whole or in part, stored in a retrieval system or transmitted by any means without the express permission of Lochrin Bain Ltd.  
PATENT PENDING UK PATENT APPLICATION NO. 000000.0



**PERIMETER SECURITY MANUFACTURER**  
EST. 1989

Lochrin Works, 7 Limekilns Road, Blairlinn Industrial Estate  
Cumbernauld, G67 2RN  
Telephone: +44 (0) 1236 457333 Facsimile: +44 (0) 1236 451166  
Email: sales@lochrin-bain.co.uk Website: www.lochrin-bain.co.uk

**DRAWING TITLE**  
**Lochrin Combi™ SL2, 2.4 / 3.0m High**  
**Centre Hung Double Leaf Gate Details**  
**Opening Out**

**Approved to B3 (SR2)**  
LPS1175: Issue 8, Certificate Numbers: 1337m & 1337n

DRAWN BY Gary MacGregor	CHECKED BY -	DATE 04.06.2020	SCALE VARIES
----------------------------	-----------------	--------------------	-----------------

DRAWING REF.No. <b>COM/SR2/24/4/009</b>	REVISION A
--	---------------