



Clarkson Planter

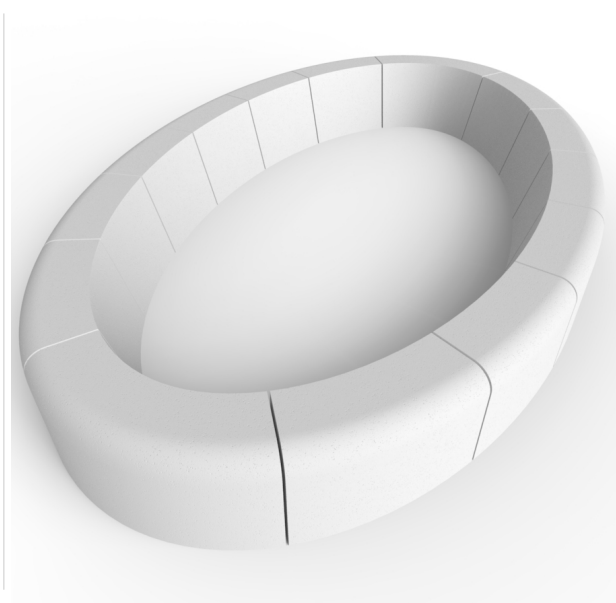
Manufactured from standard grey precast concrete with our acid etch finish, the Clarkson Planter comprises of 12 units with a range of colours and timber topped finishes available to give it a quality, modern look. It would be a superb addition to any outdoor space and give the area a fresh, contemporary feel.

The Clarkson Planter, like all our concrete products, is sealed prior to dispatch.

Colours available: Light Grey. Buff. White. Black.

Finishes available: Light Exposed Aggregate. Fully Polished. Polished Top.

POA
L: 4496mm x D: 2794mm x H: 500mm x Weight: 260kg / 180kg



Materials, Finishes & Options

Concrete
 Available in the options below;
 for further details on our **Concrete**
 visit our **materiality page >>**



Concrete colours
 Available in the options below;
 for further details on our **concrete colours**
 visit our **materiality page >>**



Fixtures
 This product can be customised with a range of optional fixtures. If you have any further bespoke requirements **get in touch**, our sales team will be happy to help.

