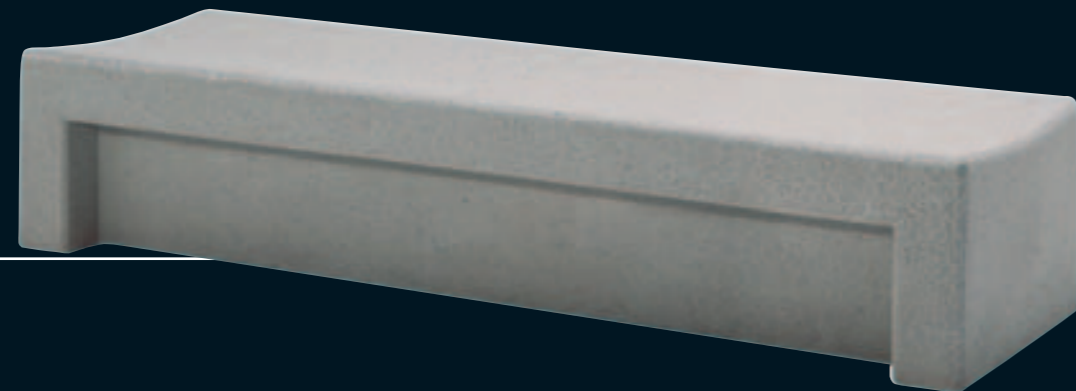
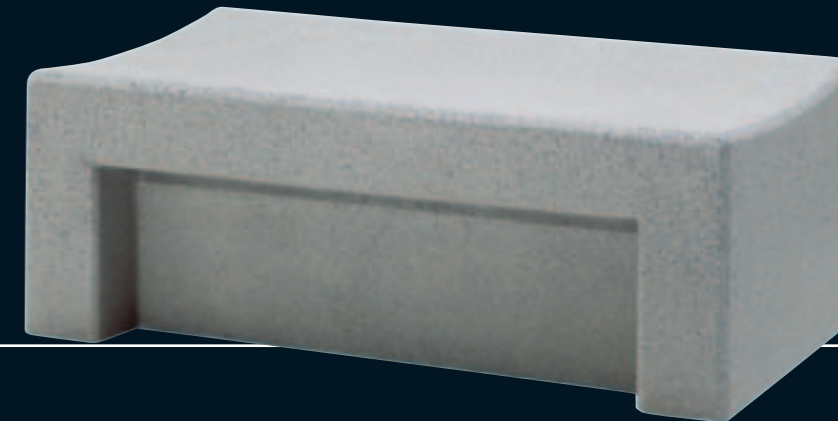


killy 3 | 696 kg |



killy 1 | 380 kg |



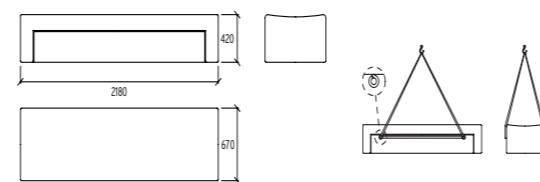
killy 3 F | 696 kg |



killy 1 F | 380 kg |

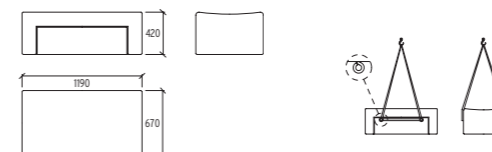


killy 3 I | 696 kg |



killy 1 I | 380 kg |

- TROPICAL
- FLANDES



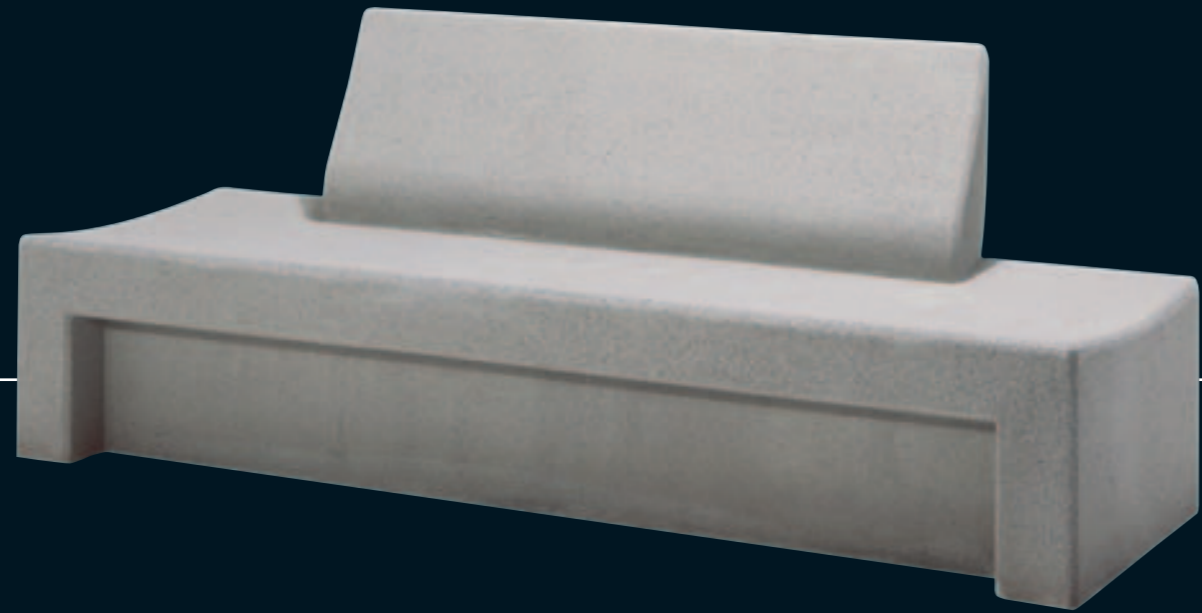
complementary elements

quadrat pag. 54

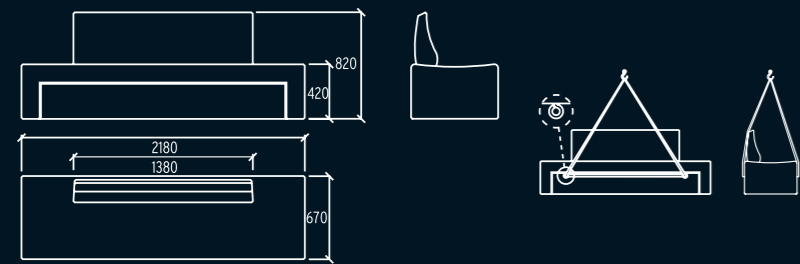




killy | design > Ton Riera Ubía



killy 4 | 927 kg |



killy 4 I | 927 kg |



killy 4 F | 927 kg |

bancos | bancs | benches | bancs

bancos | bancs | benches | bancs



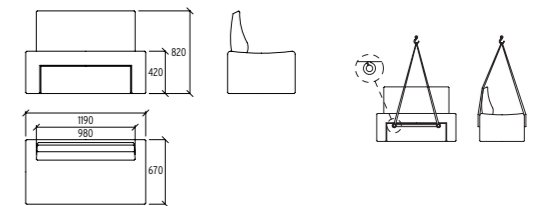
killy 2 I | 506 kg |



killy 2 F | 506 kg |



killy 2 | 506 kg |



complementary elements



quadrat pag. 54