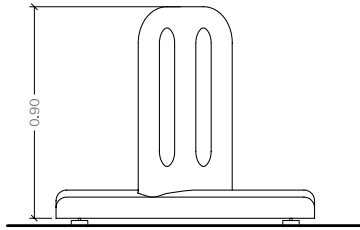
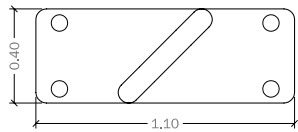


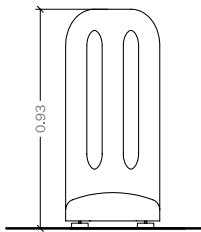
## GEOMETRIA



Alçat



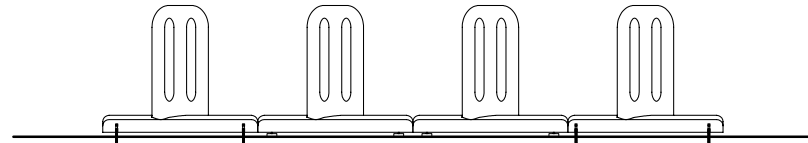
Planta



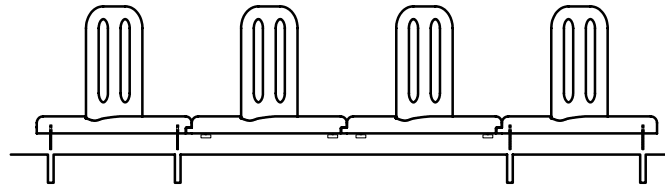
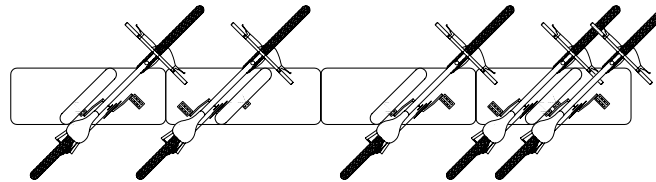
Alçat

escala (en cm.) 0 50

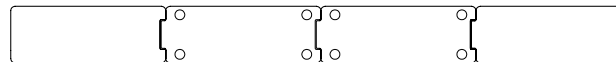
## COLOCACIÓN



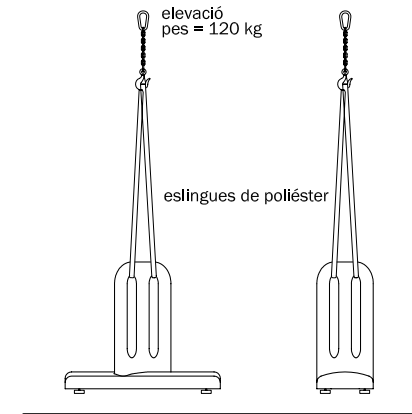
Recolzat . Col·locació de les peces de dreta a esquerre, degut al sistema de fixació concatenat entre peces.



Secció. Elements concatenats



Planta inferior. Elements concatenats



elevació pes = 120 kg

eslingues de polièster

suports regulables per a nivellació

Sistema de Fixació Recolzat

## CYCLO ©

Cyclo provides an element of urban facilities and pedestrian-friendly functionality for the cyclist.

The intended co-placement of each unit within the design allows for an element of great simplicity, and versatility.

model patentat ©

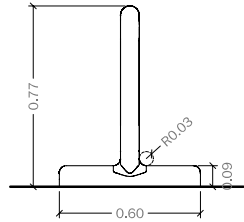


**MATERIAL:** Reinforced concrete & stainless steel  
**COLOUR:** Grey, black  
**TEXTURE:** Stripped, smooth  
**FINISH:** Anti-graffiti  
**WEIGHT:** 120Kg  
**INSTALLATION:** Base supported and/ or fixed with threaded bars

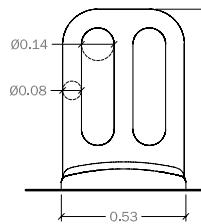
**DESIGN:** diez+díez design



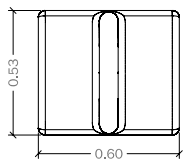
GEOMETRIA



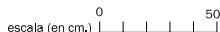
Alçat



Perfil



Planta



CYCLO EXENTO ©

The Cyclo Exento is intended to be installed in places where space is limited or restricted. For example, it allows for the alignment along pavements with limited width, positioning the bike longitudinally along the pavement, therefore occupying a minimum space.

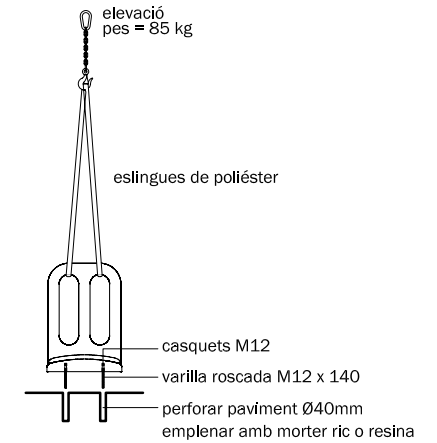
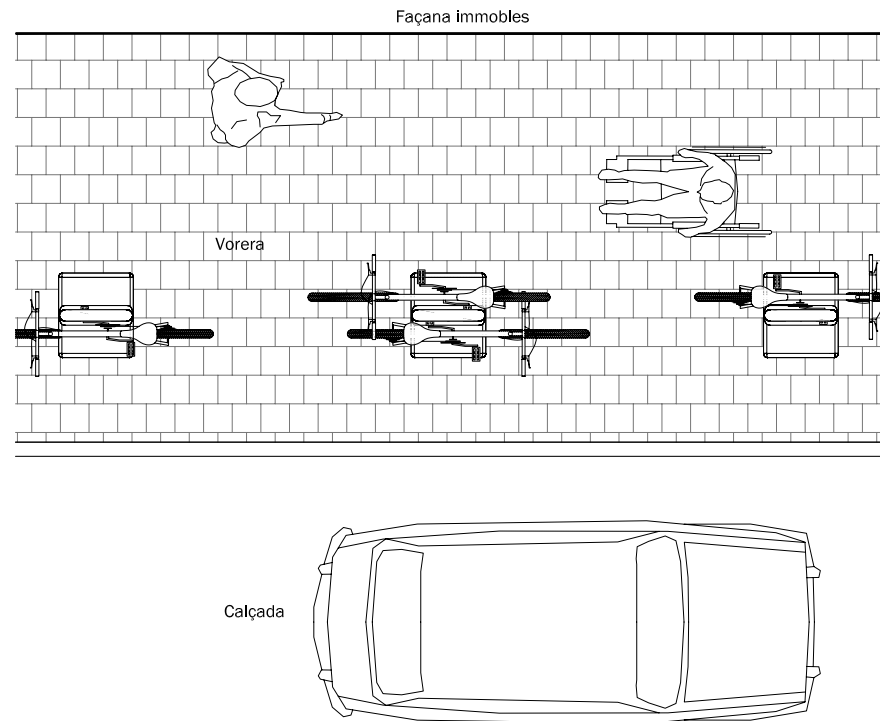
model patentat ©



**MATERIAL:** Reinforced concrete & stainless steel  
**COLOUR:** Grey, black  
**TEXTURE:** Stripped, smooth  
**FINISH:** Anti-graffiti  
**WEIGHT:** 85Kg  
**INSTALLATION:** Fixed with threaded bars  
**DESIGN:** diez+diez design



COL·LOCACIÓ



Sistema de Fixació  
 Fixat a fons