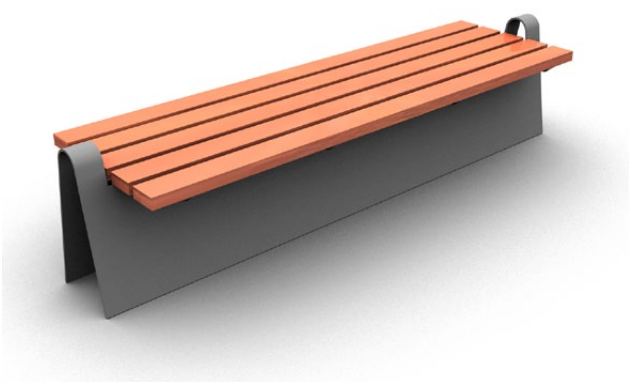
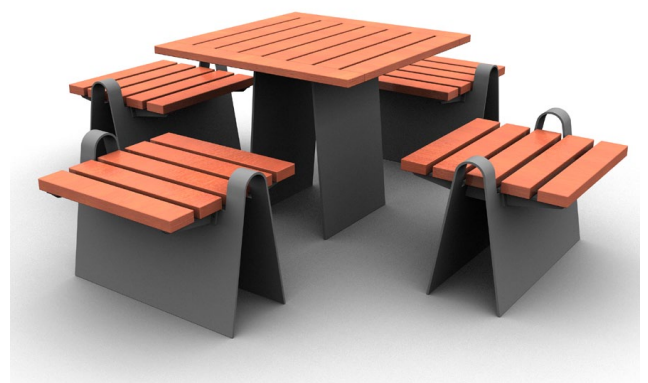
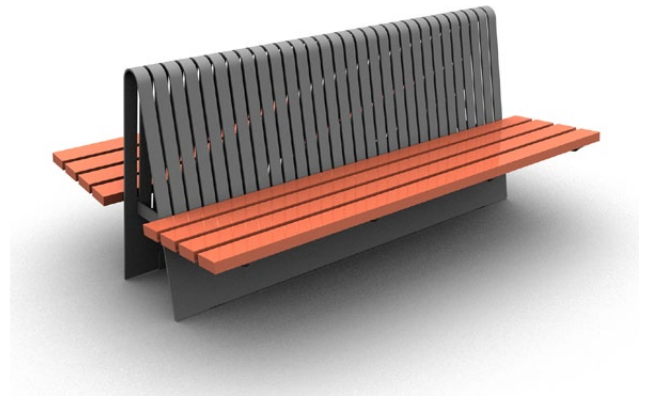
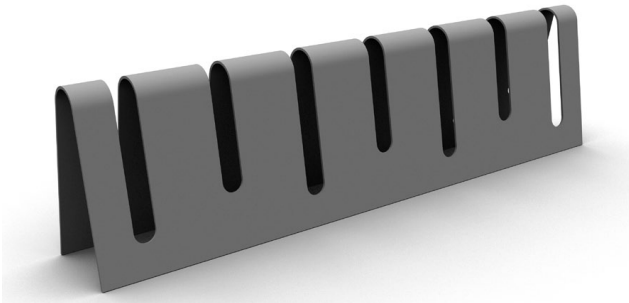


Lótus collection

LARUS  DesignUrbano



Lótus seating

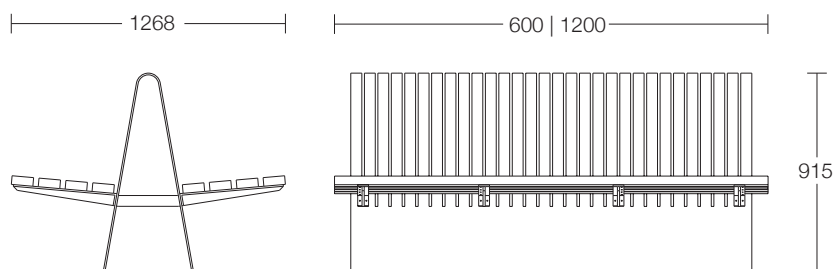
LARUS  DesignUrbano

materials: metallised and forge enamelled painted steel;
treated Tali wood

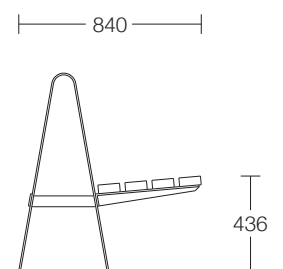
dimensions: double with back: 1800mm x 1268mm x 915mm
single with back: 1800mm x 840mm x 915mm
backless: 2000mm x 550mm x 501mm

additional features: (consult Public Spaces for more information)

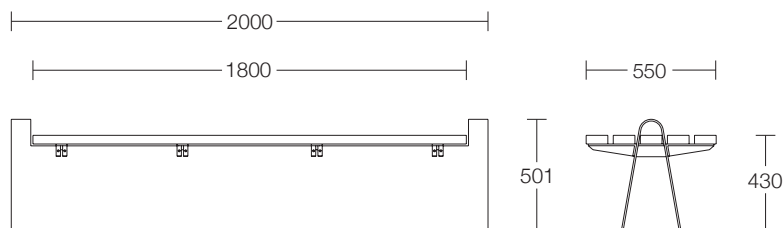
Double bench with backrest



Bench with backrest



Bench without backrest



Public Spaces **Urban Design Consultants**

UK Free No.: 0800 169 1523 tel: +353 1 274 52 84 fax: +353 1 286 49 97

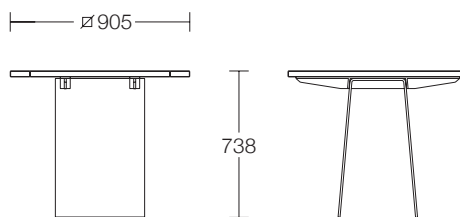
email: sales@publicspaces.eu web: publicspaces.eu

Lótus table & litter bin

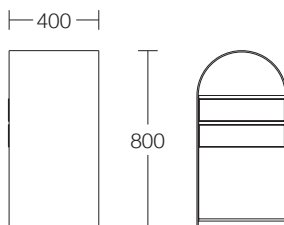
LARUS  DesignUrbano

materials:	metallised and forge enamelled painted steel; treated Tali wood
dimensions:	table: 905mm x 905mm x 738mm litter bin: 400mm x 400mm x 800mm
additional features:	(consult Public Spaces for more information)

Table



Litter Bin

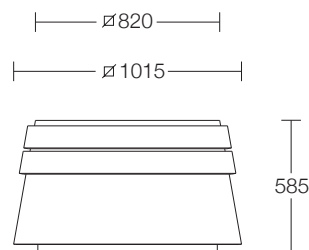


Lótus planter & cycle stand

LARUS  DesignUrbano

materials:	metallised and forge enamelled painted steel; treated Tali wood
dimensions:	planter: 1015mm x 1015mm x 585mm cycle stand: 2100mm x 290mm x 550mm
additional features:	(consult Public Spaces for more information)

Planter



Bicycle Parking

