

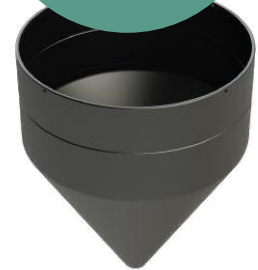
Cone Tanks

250 Litre to 1000 Litre

Constructed using corrosion resistant, UV stabilised, high-density food grade polyethylene our Cone Tanks are frequently used in applications requiring settlement or clarification of liquids or the bulk removal of solids from waste water. Cone Tanks allow for the full drainage of tank contents for quality control and the elimination of particulate.



**ALSO
AVAILABLE
WITHOUT
FRAME**



Code	Description	Standard Colours	Standard Outlet	Standard Lid Size mm	Dimensions dia x H (mm)
17520145-F	250 Litre 45° Cone Tank with frame	Black/Natural/Green	1"	455	609 x 1562
17520245-F	500 Litre 45° Cone Tank with frame	Black/Natural/Green	2"	455	812 x 1563
17520460-F	900 Litre 60° Cone Tank with frame	Black/Natural/Green	2"	455	1400 x 1681
17520330-F	1000 Litre 30° Cone Tank with frame	Black/Natural/Green	2"	455	1200 x 1552

Please note: Tank sizes quoted are subject to a +/- 3% variation

Cone Tanks

1500 Litre to 3150 Litre

Popular uses include:

- Conical fermenters for Beer and Cider brewing
- Brewing Tank and Craft brewing tanks
- Wine making
- Bio-diesel and other Oil Treatment Processes
- Food Industry
- Mixing systems and blending
- Industrial holding and mix tank storage
- Processing tank
- Water storage tank
- Settlement and sludge tanks
- Processing tanks
- Water treatment tanks
- Chemical tank
- Clarification tanks

**VIEW
OUR FULL
RANGE
ONLINE**



17520960-F



17521060-F

Code	Description	Standard Colours	Standard Outlet	Standard Lid Size mm	Dimensions dia x H (mm)
17520945-F	1500 Litre 45° Cone Tank with frame	Black/Natural/Green	2"	455	1900 x 1605
17520960-F	2000 Litre 60° Cone Tank with frame	Black/Natural/Green	2"	455	1900 x 2299
17521030-F	2700 Litre 30° Cone Tank with frame	Black/Natural/Green	2"	455	1400 x 2333
17521060-F	3150 Litre 60° Cone Tank with frame	Black/Natural/Green	2"	455	1400 x 3155

Please note: Tank sizes quoted are subject to a +/- 3% variation

Cone Tanks

4200 Litre to 12000 Litre



Full drain fitting for total drainage



17521830-F

**ALSO
AVAILABLE
WITHOUT
FRAME**

Code	Description	Standard Colours	Standard Outlet	Standard Lid Size mm	Dimensions L x W x H (mm)
17521215-F	4200 Litre 15° Cone Tank with frame	Black/Natural/Green	2"	620	1900 x 2334
17521515-F	5200 Litre 15° Cone Tank with frame	Black/Natural/Green	2"	620	1900 x 2640
17521615-F	6200 Litre 15° Cone Tank with frame	Black/Natural/Green	2"	620	1900 x 3030
17521560-F	7000 Litre 60° Cone Tank with frame	Black/Natural/Green	2"	620	1900 x 3889
17521430-F	8000 Litre 30° Cone Tank with frame	Black/Natural/Green	2"	620	1900 x 2551
17521830-F	10000 Litre 30° Cone Tank with frame	Black/Natural/Green	2"	620	2600 x 3452
17521860-F	12000 Litre 60° Cone Tank with frame	Black/Natural/Green	2"	620	2600 x 5034

Please note: Tank sizes quoted are subject to a +/- 3% variation

Cone Tanks

13000 Litre to 30000 Litre

VIEW
OUR FULL
RANGE
ONLINE

Features

- 100% rust proof
- UK manufactured
- 2 year guarantee
- Racking port available as an optional extra
- Supplied direct from stock for fast delivery



Code	Description	Standard Colours	Standard Outlet	Standard Lid Size mm	Dimensions L x W x H (mm)
17522513-F	13000 Litre 13° Cone Tank with frame	Black/Natural/Green	2"	620	2600 x 3379
17522530-F	14000 Litre 30° Cone Tank with frame	Black/Natural/Green	2"	620	2600 x 3930
17522830-F	16000 Litre 30° Cone Tank with frame	Black/Natural/Green	2"	620	2600 x 4122
17523013-F	17000 Litre 13° Cone Tank with frame	Black/Natural/Green	2"	620	2600 x 4949
17525005-F	25000 Litre 5° Cone Tank with frame	Black/Natural/Green	2"	620	3450 x 3737
17525505-F	30000 Litre 5° Cone Tank with frame	Black/Natural/Green	2"	620	3450 x 4067

Please note: Tank sizes quoted are subject to a +/- 3% variation