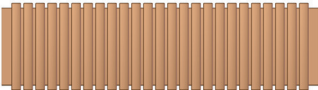





Thank you for purchasing a **hanit® recycled plastic** product.
Below you'll find our assembly instructions.



Parts list

Description	Sketch	Quantity
Seat element		1
Bench ends		2
Screws Panhead ø6x60 mm		12
Bit		1

Required tools

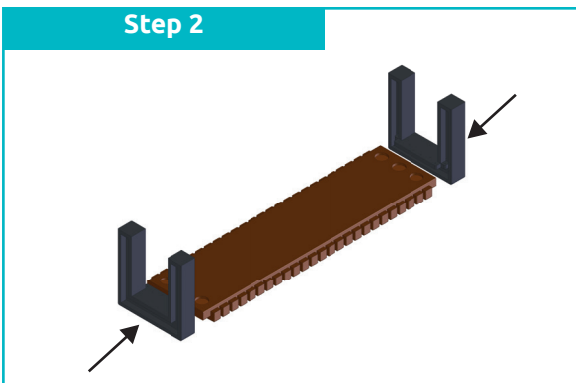
- » Mallet
- » Cordless Screwdriver

Step 1



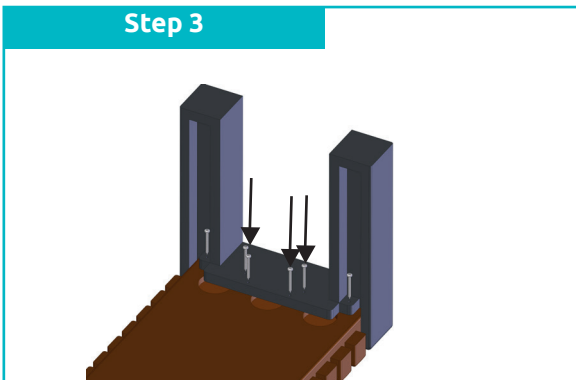
At the beginning, place the seat element upside down on a clean surface.

Step 2



Slide the bench feet with the Openings and the pre-drilled holes over the seat board. Make sure that the bench feet are pushed all the way. If necessary, use a soft-face mallet.

Step 3



Screw the bench ends with 6 screws each through the pre-drilled holes into the feet.