



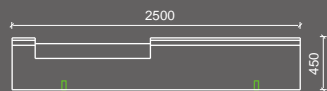
SPECIFICATIONS

MATERIALS	Cast stone Wood: Sapelli on 50 or 100 cm stainless steel frame
FIXING	2x M12 Shelve - length 200 mm
WEIGHT	Large - 1.100 kg / Small - 308 kg
FINISHES	Micro etched / Polished / Velvet Waterproof and anti-graffiti protection

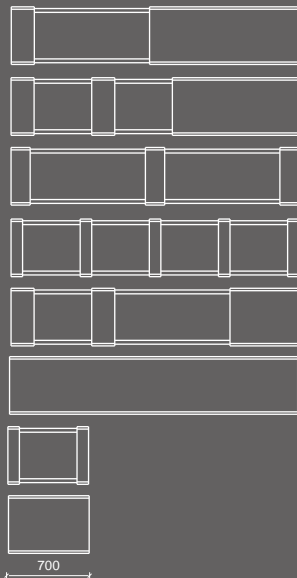


GEOMETRY

Front view



Possible Top views



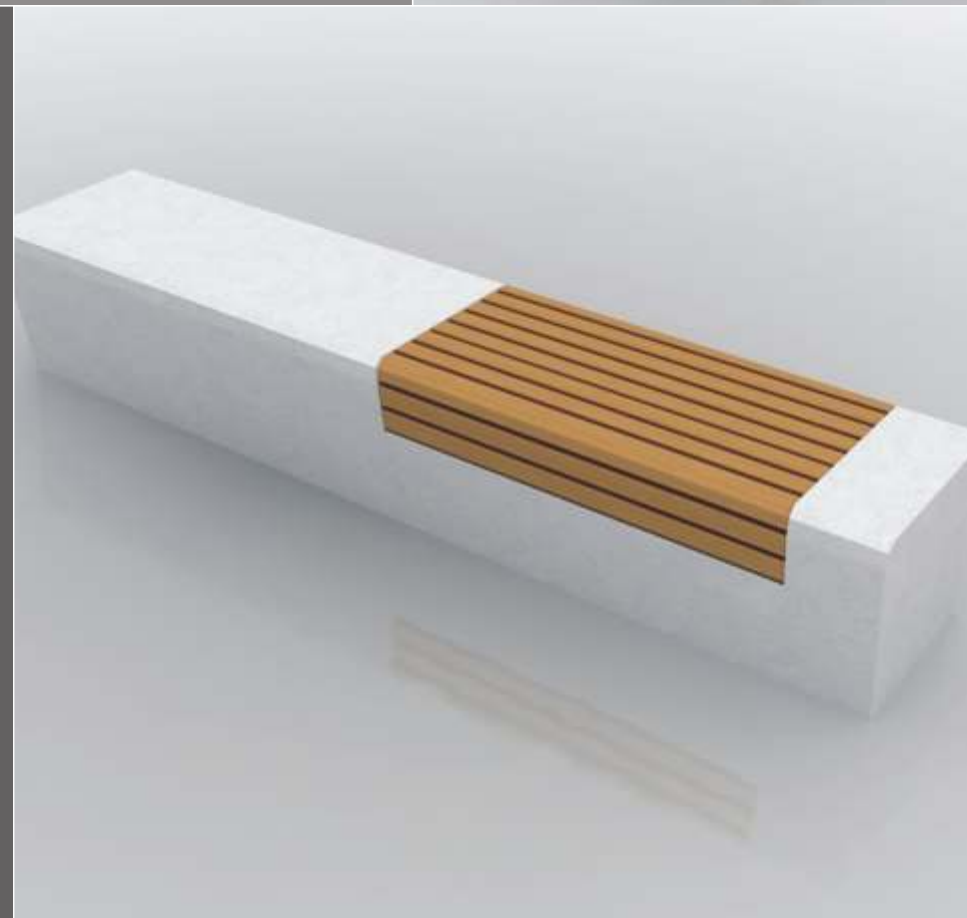
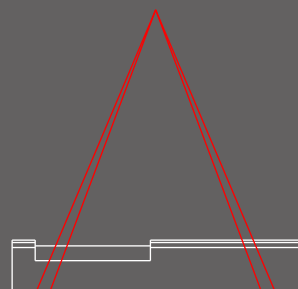
Side view



Crosscut



HANDLING



Perimeter is easily noticeable with white cane.
Appropriate seat height. Easy to stand-up thanks to back slope under seating.
Volume is easily understandable and friendly for people with cognitive disabilities.

