

# BENCH GALET

C O N C R E T E   S T R E E T   F U R N I T U R E






PARC INDUSTRIEL DE TOURNAI OUEST 2

16, RUE DES SABLIERES

7503 TOURNAI (BELGIUM)

T +32 (0)69 67 26 26 | F +32 (0)69 67 26 27

info@urbastyle.com | www.urbastyle.com | Follow us: 

# CONTENTS

01. ELEMENTS AND DIMENSIONS .....	4
02. COMBINE AND CREATE .....	5
03. ACCESSORIES .....	8
04. ACCESSIBILITY AND HANDLING .....	6
05. COLOURS AND FINISHES .....	7
06. DESIGN & PROJECTS .....	8

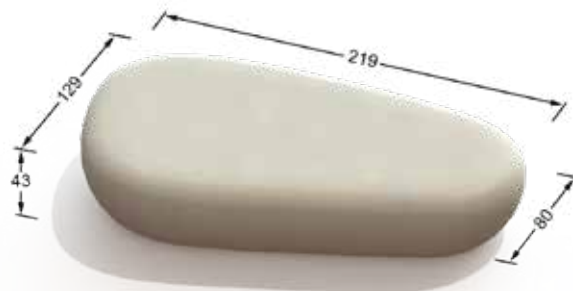
# 01. ELEMENTS AND DIMENSIONS

## GALET COLLECTION

Below you will find the six different types of benches from the galet collection. They are differences in shape and dimensions and they are all free standing.



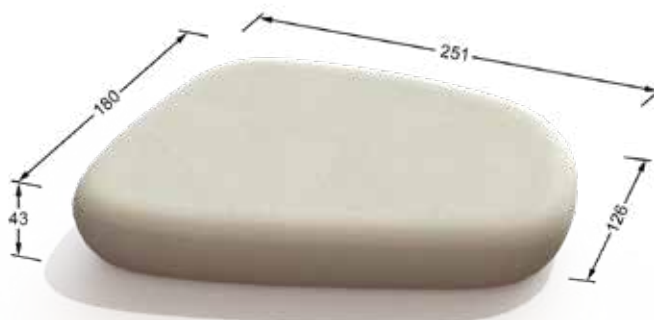
GALET I



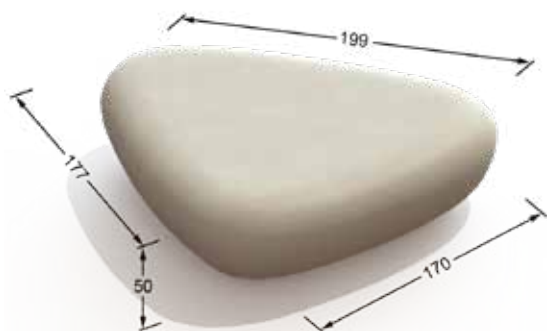
GALET III



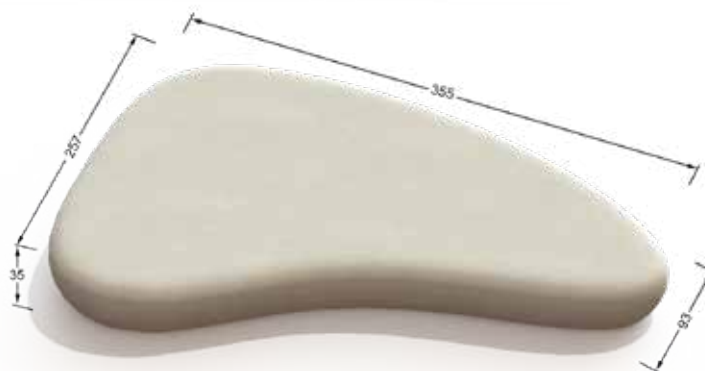
GALET VI



GALET IV



GALET II



GALET V

# 02. COMBINE AND CREATE

## COMBINATIONS OF THE GALET BENCHES

By combining the different benches together you can create what you want. Below you can find some compositions.

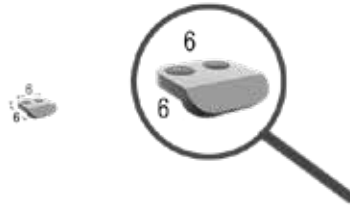


# 03. ACCESSORIES

Use the anti-skates to prevent damages on the benches.



Z B . A C . 0 7



Z B . A C . 0 8

# 04. ACCESSIBILITY & HANDLING



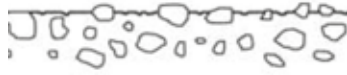
Perimeter is easily noticeable with white cane.  
Volume is easily understandable and friendly for people with cognitive disabilities.



The elements are always handled with care using a crane and straps during loading on the truck and during unloading on the building site.

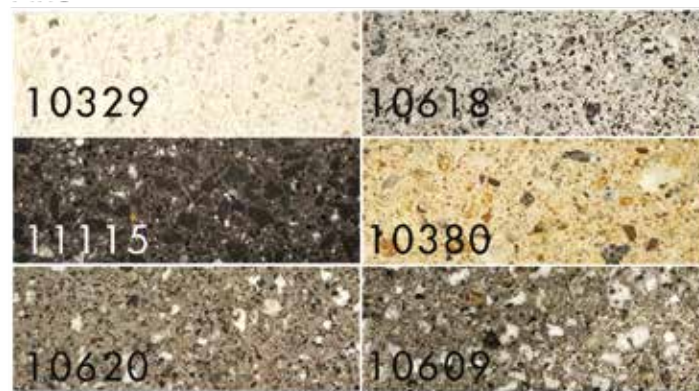
# 05. COLOURS AND FINISHES

## FERRO\*



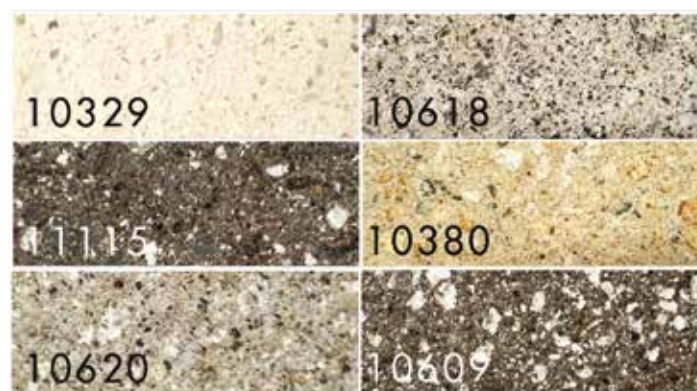
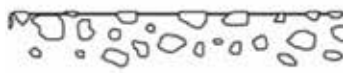
After the curing period, the surface is shot-blasted, allowing aggregates to appear. This finish allows a light roughness to the surface.

## FINO\*



After the curing period, the hard layer at the surface is grinded away with diamond grinders to expose the aggregates. This finish creates an even surface.

## FINERRO\*



After the curing period, the hard layer at the surface is grinded away with diamond grinders to expose the aggregates with diamond grinders. Afterwards the surface is shot-blasted. This finish creates a matte, slightly rough structure.

\*Indicative sample | Subject to colour and structure variations.

# 06 DESIGN & PROJECTS

L'Escaut is a cooperative of architects. Located in a former industrial building, shared with performing art and plastic art artists, the agency has build its approach around two main themes: cultural venues and public spaces.

Evolving between the world of culture and the shared urbanity, l'Escaut attempts to write architecture in a democratic way, refusing the primacy of the object as well as the unique author.

Rather than creating architectural objects, l'Escaut prefers to define its productions like a layout. This definition includes the sculptural dimension of architecture and its spatial dimension as well. It goes also over the visual and physical results, architecture is built around the uses that will make it live.

Like a rock band or a collective of artists, l'Escaut boasts creations shared between the different authors who make up the team, showing an aesthetic and philosophical spirit forged commonly over time.







DUBAI , SWISS INTERNATIONAL SCHOOL



BELGIUM : CHARLEROI PHENIX3



PARC INDUSTRIEL DE TOURNAI OUEST 2

16, RUE DES SABLIERES

7503 TOURNAI (BELGIUM)

T +32 (0)69 67 26 26 | F +32 (0)69 67 26 27

info@urbastyle.com | www.urbastyle.com | Follow us:

IN COLLABORATION WITH:

