



Austin Seat

The Austin Seat is a study in beautiful balance. Inspired by architecture of the 20s and classic modern furniture of the 50s, it expresses familiar themes in thoroughly contemporary terms. Austin balances lightness and substance, is relaxed, yet refined, poised but never boring. The cantilever version is a natural for minimalist spaces, the four-legged version a fine fit within a range of architectural styles. Composed of minimal parts, (just two extrusions create the seat and back in all versions) Austin masters the details, from its tapered slats to the lovely winged shape of its end piece.

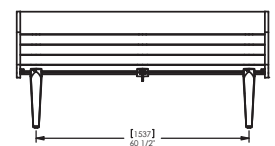
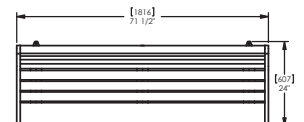
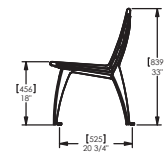
Specification:

Materials:

Frame / Seat - timber; cast aluminium

Dimensions

H: 839mm
W: 1816mm
D: 607mm



(Technical Drawings for variants available on request)

artform
urban furniture