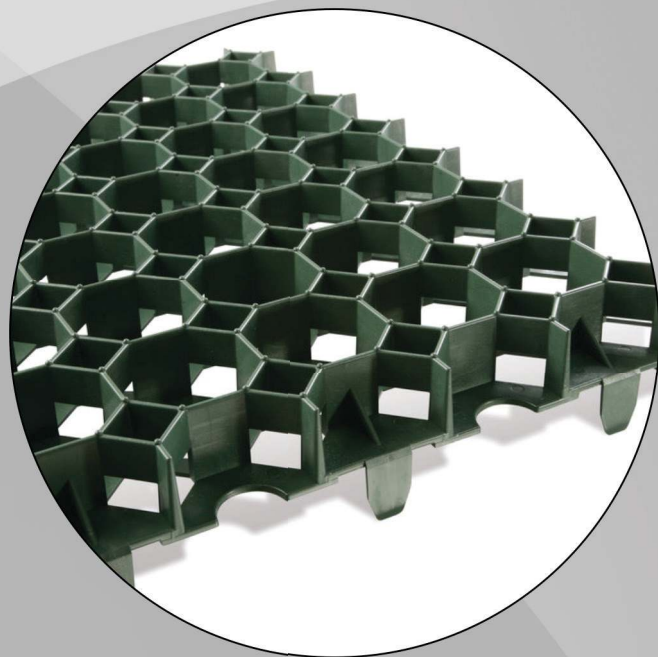


CellPave™ 40 permeable paving grids are the perfect solution for park areas, driveways and paths.

MATERIAL

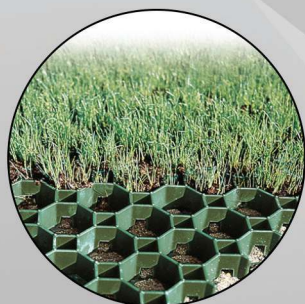
CellPave™ 40 permeable paving grids are an interlocking cellular paving grid system for grass and ground reinforcement. Manufactured from 100% recycled HDPE plastic, CellPave™ 40 permeable grass & gravel plastic pavers are supplied per sq/m. CellPave™ 40 grass pavers are a cost effective solution to worn & rutted grassed areas, displaced gravel and for Source Control of surface water run-off. CellPave™ 40 paving grids are designed to be installed onto a well prepared, free-draining and relatively even surface using either a 'Reduced-Dig System' or by employing a full sub-base construction incorporating a geogrid reinforcement layer.

**HANDLING**

You can cut CellPave™ 40 grids easily with a common right-angle grinder or jigsaw. The grass reinforcement paver grids have a very open cell structure allowing unrestricted healthy grass root growth and water infiltration and can be used as part of a sustainable urban drainage system (SuDS). The paver grids also incorporate 25mm 'ground-spikes' on the base which fix through the adjacent paving grid's edge-loops to provide the entire structure with firm anchorage and structural integrity and making them easy to install at rates of up to 100m² per hour.

CellPave™ 40 grass pavers should be installed onto a firm level sub-base (typically a DoT Type 3 or porous sub-base). The thickness of this base is dependant on the existing ground conditions and the design load specifications.

Please note that with all installations of grass pavers, it is strongly recommend that all areas should have sufficient drainage prior to installation. Failure to ensure this may result in the product not performing as intended.

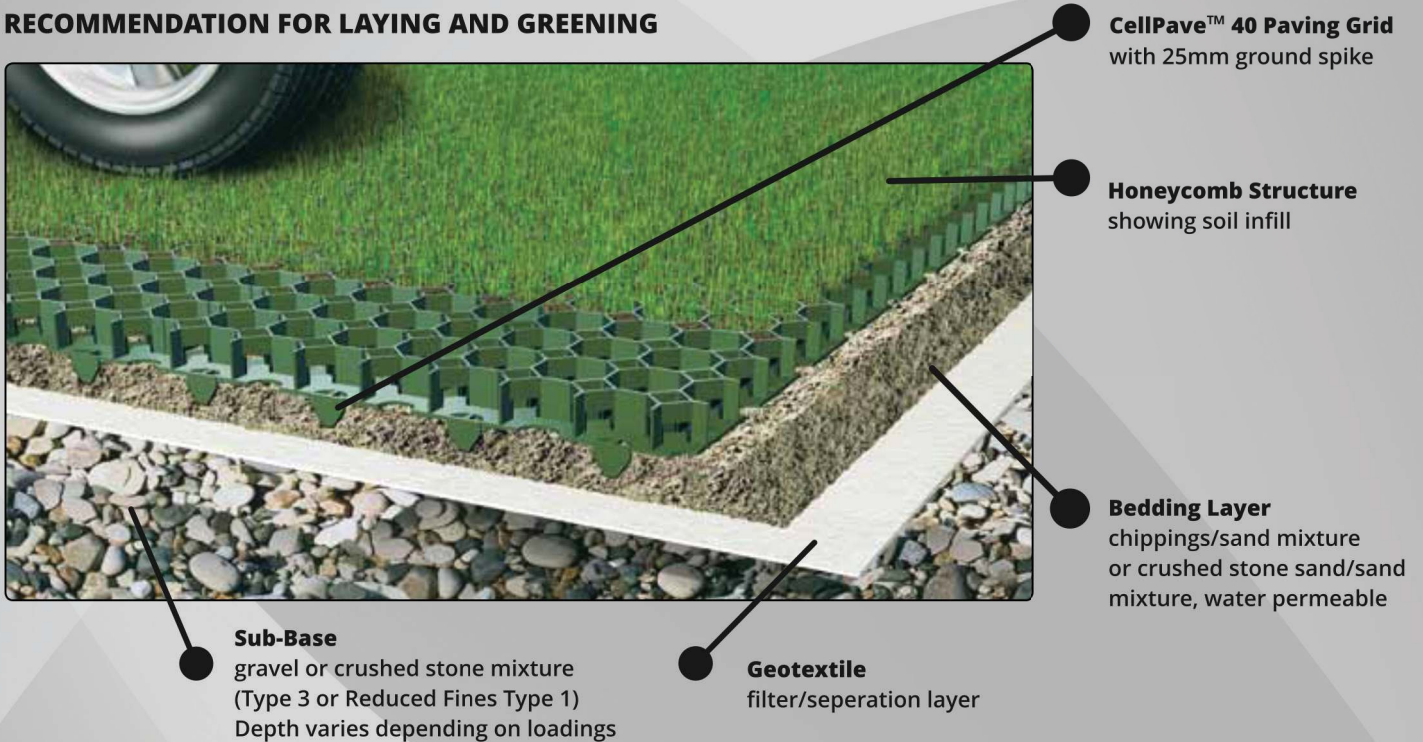
**PROPERTIES**

- UV Stabilized
- Temp resistant up to +60 °C
- Weather-resistant
- Frost-resistant
- Lawn component 80 - 90 %
- Fixed links in polysurface

**APPLICATIONS**

- Driveways
- Private parking spaces
- Carports
- Storage areas
- Garden paths
- Strengthening pavements
- Securing slopes
- Protecting stream/river banks

RECOMMENDATION FOR LAYING AND GREENING



Backfilled with seed/grass



Backfilled with gravel



White Marker/Delineator

FEATURES AND BENEFITS

- Open cell structure allowing unrestricted healthy grass root growth
- SuDS source control compliant
- Attractive paving solution with a natural grass or permeable retained gravel surface
- 25mm ground spikes resist lateral forces caused by vehicles
- Fast and easy to install
- Manufactured from 100% recycled plastics and are UV Stabilised
- Plastic grass paving grids are chemically inert, non-toxic and rot free
- An eco-friendly, sustainable paving solution for trafficked areas

TECHNICAL SPECIFICATIONS

MATERIAL:	Recycled Polyethylene (HDPE)
DIMENSIONS:	500mm x 500mm wide x 40mm +25mm spikes deep (+/-2%)
WEIGHT:	Each piece is 1.2kg – 4.8kg per m2 (+/-2%)
NOMINAL CELL DIMENSIONS:	60mm Octagonal (+/-2%)
BASE REINFORCEMENT/ANTI SHEAR:	Four 25mm spikes per paver
CONNECTION METHOD:	Edge spikes and loops
CELL WALL THICKNESS:	2.7mm to 3.2mm (+/-2%)
CELL OPENNESS (%)	95% on top and 75% on base
COLOUR:	Black
UV STABILISED:	Yes
LOAD BEARING CAPACITY (FILLED):	150 tonnes per m2 - Tested to DIN EN ISO 604
ENVIRONMENTALLY NEUTRAL:	Tested to ISO 11885 / ISO17294-2A / DIN EN 17933
PRODUCTION CONTROL:	Tested to ISO 11359
TRAFFIC LOADING:	Tested to DIN 1072
PAVER PER M²:	FOUR
PALLET DIMENSIONS:	1000mm x 1000mm x 2430mm / Contains 240 pavers (60m²) Total pallet weight 300kg



For more information, contact us
today or visit our website:

www.groundtrax.com

GROUNDTRAX
Ground Protection and Reinforcement
Telephone: 03456 800008 | Fax: 03456 800208
E-Mail: info@groundtrax.com | Website: www.groundtrax.com