

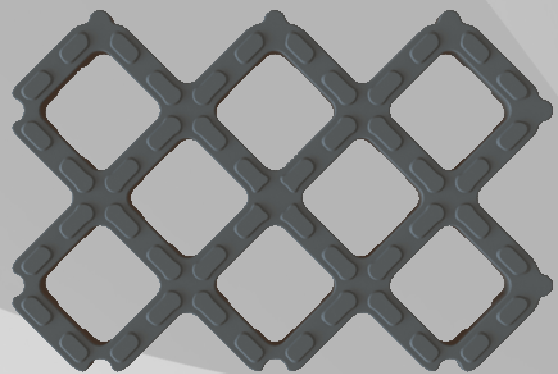
**CELLPAVE™ HD**

The **ultimate** truck-grade, heavy duty cellular paving system from Groundtrax Systems Limited.

Designed from the ground up, CellPave™ HD is incredibly strong and sets a new standard in permeable paving systems.

Proudly made in the UK, CellPave™ HD is made from 100% recycled UK sourced post-industrial polymers.

Each paver is 600mm x 400mm x 75mm thickness (4.17 pavers per sq metre). Weighing 8kg each (33kg/m<sup>2</sup>) they fall well within the HSE manual handling limits and are quick and easy to install. The unique design also allows interlocking stacking on pallets, resulting in reduced shipping costs.



CellPave™ HD pavers have been designed to be installed with both gravel and grassed infills

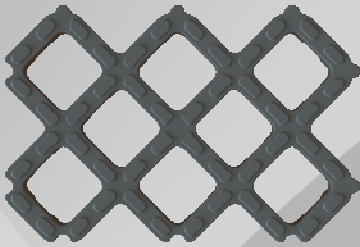
They are particularly suitable for incorporation into a SUDS compliant system and may even negate the need for water attenuation when installed on a suitable porous substrate.

CellPave™ HD is the perfect system for use on large scale civil engineering compound areas or contractor's storage areas as they can easily be uplifted at the end of the contract and re-used if required.

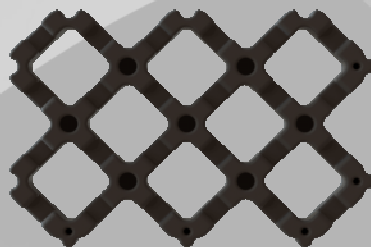
CellPave™ HD can be installed for use with all forms of traffic including:

- HGV and coach parking areas
- Emergency vehicle and fire access routes
- Highway verge reinforcement (particularly where HGV overrun can occur)
- Fork lift loading areas

A key feature of CellPave™ HD is the unique channel cut-outs



TOP PROFILE



BOTTOM PROFILE



SIDE PROFILE

- 1 Enables 75% more product to be stacked on a single pallet when compared to TruckPave 80
- 2 Offset interlocked stacking ensures a very stable pallet for transportation
- 3 Prevents stagnation inside the cell when a non-porous substrate is used for installation
- 4 Aids inter-cell drainage and allows nutrients to pass between cells
- 5 Promotes a much healthier root system that allows lateral root growth
- 6 A double stacked, cross-bonded layout is also possible

### Materials

100% recycled from UK sourced post-industrial polymers. We have a guaranteed, consistent material source. Durability in all climates is well proven as the same materials have been used to manufacture speed ramps for over 20 years.

### Supply

Multiple press tools and continuous 24/7 production enables high volume manufacture to ensure your installation is completed on schedule.

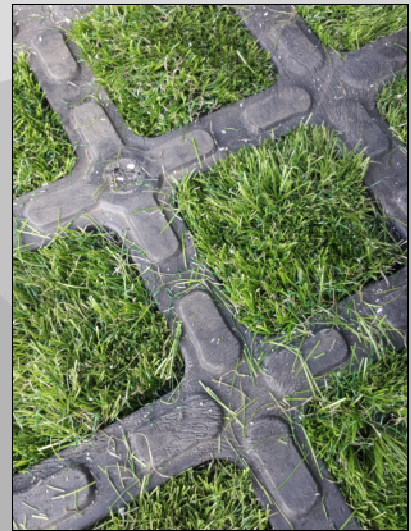
### Certification & Testing

Extensive testing has shown our paver to be virtually indestructible. We are backing up this testing with certification from both Lloyds and TUV.

### Design

Our unique design incorporates substantial improvements over existing products in the marketplace.





### TECHNICAL SPECIFICATIONS

Dimensions:	600mm x 400mm
Thickness:	75mm <i>(from top of grip surface)</i>
Wall Thickness:	35mm
Quantity per m <sup>2</sup> :	4.17
Internal Cell Dimensions:	104mm x 104mm
Nominal Weight:	8kg per paver (33.36kg/m <sup>2</sup> )
Material:	100% Recycled Post Industrial Polymers
Colour:	Dark Grey
Pallet Dimensions:	1600mm x 1200mm x 900mm <i>(inc. pallet)</i>
Pallet Quantity:	120 pavers (28.8m <sup>2</sup> )
Pallet Weight:	980kg



For more information, contact us  
or visit the dedicated website:

[www.cellpave.com](http://www.cellpave.com)

## GROUNDTRAX

Ground Protection and Reinforcement

Telephone: 03456 800008 | Fax: 03456 800208

E-Mail: [info@groundtrax.com](mailto:info@groundtrax.com) | Website: [www.groundtrax.com](http://www.groundtrax.com)