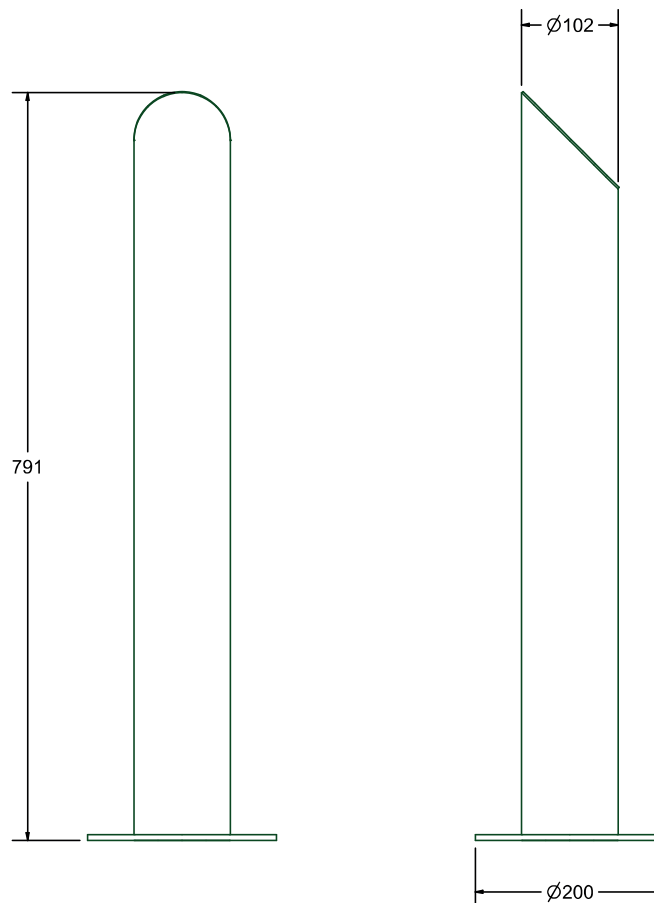
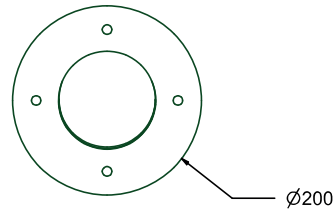




**Max Dimensions:**

Height: 791 mm | Tube Diameter: 102 mm | Base flange Diameter: 200 mm

Weight: 7 kg

**Description:**

The bollard EASY is made in steel. The tubular steel, 102 mm diam. and 3 mm thick, is laser-cut on the upper part so that it looks 45° inclined. The top of the bollard is welded through continuous welding, later polished, so that it looks seamless. A flange in steel of 60/10 thickness, with 4 holes of 10 mm diam, for the fixing to the ground through specific bolts (not provided), is welded to the base of the bollard. The version for the fixing through cementation is provided with an under flange extension of 250 mm and the flange comes with no holes. For the realization of this product, Steel EN10111DD11 is used and later treated with a cycle of sandblasting, cataphoresis and powder coating. Such cycle is meant to guarantee the protection of the painted products, in an environment of C4 corrosion class, as requested by the UNI regulations EN ISO 12944-2. The products are eventually polyester-powder coated with RAL colours at choice.

This product can come in stainless steel AISI 316 as well. Optional: extension for cementation