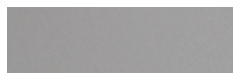


Sizes in cm



Materials: Poles manufactured in Class 1 S-275 JR steel cylindrical tube of one or two sections depending the height. Hot-galvanised painted finish.

Finishes:



Light grey



Medium grey



Dark grey

Heights:

One section (Ø 114.3 mm): 3.6 m / 4.4 m / 5.2 m / 6 m

Two sections (Ø 152 mm / 114.5 mm): 6.8 m

Affixing:

By means of a base plate and bolts fastened to a foundation block. Built-in 0.2 m

Spacing between bolts:

(3.6 m / 4.4 m / 5.2 m / 6 m) 210 x 210 mm

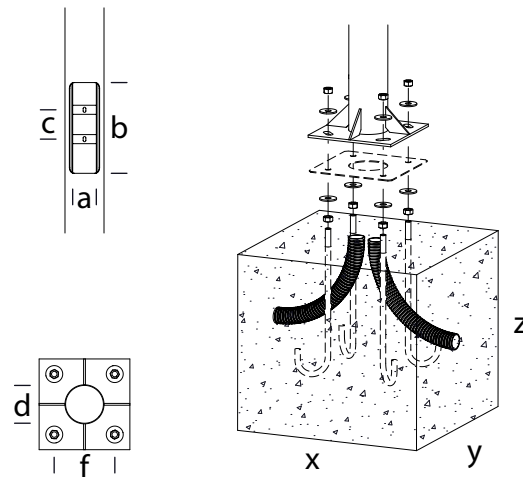
(6.8 m) 300 x 300 mm

Bolts: (4x) M18 x 500 included

Applicable standards: UNE-EN 40, EN ISO 1461, EN ISO 10025, EN 1090, ISO 12944.

Configurations

Reference	Total height (m)	Visible height (m)	Outer pole diameter (mm)	Thickness (mm)	Base plate (mm)	Spacing between bolts (mm)	Bolts (x4)	N° Doors	Door (a/b/c) (mm)	Foundation (xyz) (mm)	N° Luminaires accepted
SPF11P// SPF13P	3.6	3.4	114.3	3	300x300x10	210x210	M18x500	1		600x600x500	1/2
SPF21P/ SPF22P/ SPF23P	4.4	4.2	114.3	3	300x300x10	210x210	M18x500	1		600x600x600	1/2
SPF31P// SPF32P/ SPF33P	5.2	5.0	114.3	3	300x300x10	210x210	M18x500	1		700x700x600	1/2
SPF41P// SPF42P	6.0	5.8	114.3	3	300x300x10	210x210	M18x500	1		700x700x700	1/2
SPF51P	6.8	6.6	114.3/152	3	400x400x10	300x300	M18x500	2		800x800x700	1/3



For calculation in ground type II (according to UNE-40) and wind speed of 29 m/s, with soil formed by loose or wet dirt or sand of medium compactness ($E_0 = 4800 \text{ KN/m}^2$), with HM-20 concrete. Non-binding information. We advise to carry out checks for each situation.