



The Boulevard Preschool

Challenge

With changes in regulations, local councils are imposing strict acoustic guidelines on schools & preschools. The Boulevard preschool found itself in such a situation recently. Located in a residential housing area, the preschool required an acoustic barrier to shield local residents from the play ground noise. In addition, the preschool consisted of two buildings with separate outdoor play facilities for each – both of which were situated next to busy main roads. Hence, the solution also needed to ensure the children's safety from the surrounding busy roads. Another key requirement was fast installation so that the child care centre could become operational.

Solution

The SlimWall panel fencing system was deemed suitable for the needs of this project. Incorporating the AcoustiMax™ 50 panels, SlimWall has proven noise reduction qualities of 20+dB. In addition, the simplicity of design also allows for quick and easy construction. Two sections of SlimWall measuring 1.5m high by 52m length and 1.5m high by 68m in length were installed in just 3 days.



Modular Wall
systems™

**Industry Leader in Innovative
and Cost-Effective Acoustic and
Boundary Walls**

- Proven acoustic performance
- Cost effective
- Durable, lightweight modular construction
- Quick and easy installation
- Suited to environmentally harsh and remote locations



Call us on 0800 9155429 or
visit www.modularwall.co.uk

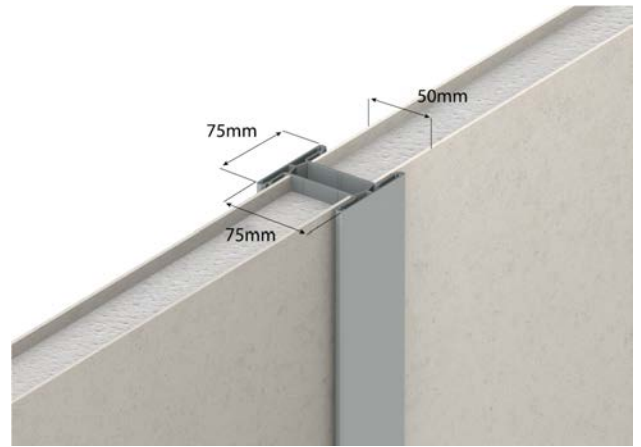
FEATURES

- Proven acoustic performance
- Cost-effective
- Durable, lightweight modular construction
- Quick and speedy installation
- Easily customised
- A fence that retains (see next page)

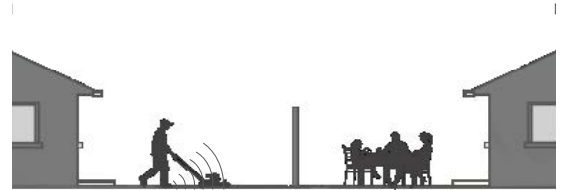
SlimWall is our most cost-effective solution and is sold predominantly in the fencing industry as a low cost solid wall or panel fence. This stylish fencing option is for those who want a designer alternative to standard timber choices.

SlimWall has proven acoustic properties, incorporating AcoustiMax™ 50 wall panels for privacy, peace and quiet.

With increasing urban sprawl and outdoor living, SlimWall is the next generation in acoustic fencing.



5 fold audible reduction
(see lawn mower test video on website)



Acoustic Qualities

All Modular Wall Systems products have acoustic properties and are acoustic lab tested and rated with reflective panels achieving a 20+ dB.

