

1. Application – Indoor Use Only

SPORTEC® Variant floor coverings are available in virtually unlimited colour combinations from the EPDM colour range. You choose the amount of black recycled rubber granules in your floor covering. It is the ideal flooring for commercial and residential spaces. Thanks to its strong colours, it can be perfectly matched to the interior design, while offering effective impact and room noise and improved walking comfort. Other benefits of using **SPORTEC® Variant** are the materials easy installation and cleaning of this robust floor covering.

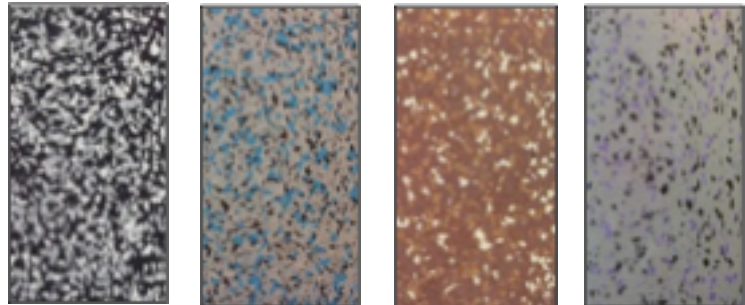
2. Material

Free choice from of colour combination from the EPDM colour range, bonded with polyurethane elastomer (black recycled tyre rubber granule share on request).

3. Product Design

Colours:

Grey-scale, Blue Freckles, Choco Mix and Rocky Plum are the 4 standard colours available from stock. All colours freely selectable as chosen by customer from the EPDM colour range (minimum order quantity).



Surface:

Granule structure with coloured EPDM granules.

4. Dimensions / Tolerances

Width:	1,250mm (± 1.5%)
Thickness:	4mm and 6mm (± 0.3mm) - other thicknesses available on request.
Volumetric weight:	Approx. 1,250 kg/m ³
Roll length (± 1.5 %):	(30m at 4mm) and (20m at 6mm).
Area weight:	Approx. 5.0 kg/m ³ @ 4mm AND Approx. 7.5 kg/m ³ @ 6mm

5. Product Testing

Fire resistance:	Cf Ys1(B1) (when made of 100% EPDM granules)	(DIN EN 13501Y1)
Tensile strength:	Approx.0.6N/mm ²	(EN ISO 1798)
Elongation at break:	Approx. 60%	(EN ISO 1798)
Hardness:	60 ± 5 Shore A	(DIN 53505)
Temperature range:	-30°C to 80°C	(internal test)
Abrasion:	Max. 450mm ³	(DIN 53516)
Coefficient of friction:	> 0.30 μ (DS)	(EN 13893)
Step sound insulation:	16 dB (at 4mm) 18 dB (at 6mm)	(DIN EN ISO 140-8: 1998-03) (DIN EN ISO 140-8: 1998-03)
Acoustical absorption:	α _w = 0.15 (at 4mm) α _w = 0.15 (at 6mm)	(DIN EN ISO 354: 2003-12) (DIN EN ISO 354: 2003-12)
Remaining deformation:	1.32mm (at 4mm) 0.54mm (at 6mm)	(EN 433: 1994-11) (EN 433:1994-11)
Compression set:	Approx.15%	(DIN 53517)
Electrostatic properties:	2.6kV	(DIN EN 1815:1995-06)
Light fastness:	4 (5*) (*when sealed with adapted 2YKYPU sealer)	(DIN EN 105-B02:2002)
Use with wheel chairs:	for permanent use adapted (DIN EN 1307:1997-06) (Tested at 8mm thickness)	

TVS VARIANT
Product Data Sheet PDS 1.1 TVS VARIANT
Revision: 1.1
Issued: 01/02/2017