

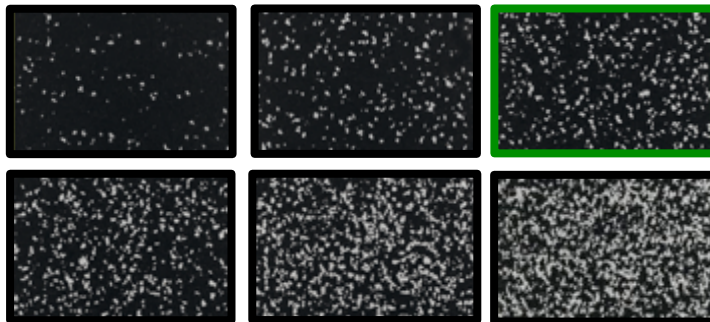
1. Application – Indoor Use Only

SPORTEC® Color is a rugged, easy-to-clean and water-repellent floor covering for use in sports and fitness facilities. Thanks to its excellent durability, slip resistance and high resistance to mechanical wear, it's the all-rounder solution for rubber gym flooring. This product is available in a range of colours and provides a comfortable walking experience and absorbs impact whilst reducing room noise. For additional shock absorption properties and to provide extra protection to a traditional subfloor this material can be bonded over a TVS elastic layer such as Team Cup X.

2. Material

Fine-grained recycled tyre rubber (black) and **5%, 10%, 15%, 20%, 30% or 50%** of coloured EPDM granules bonded with polyurethane elastomer. Standard product is a share of 15% EPDM (marked green).

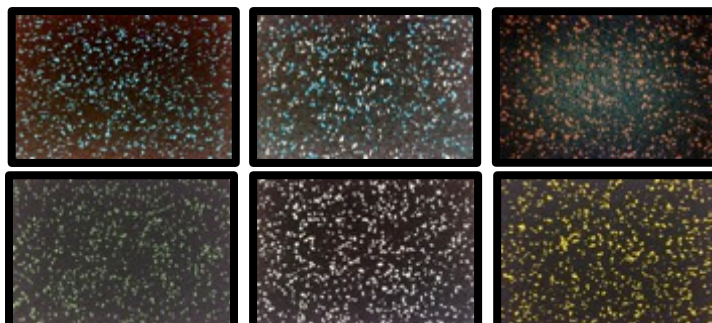
Shares of EPDM:



3. Product Design

Colours:

Black-blue, blue/grey, red, green, grey, bright yellow, lilac, green.
(other colours on request).



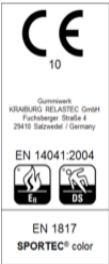
Surface:

Fine granule structure with coloured EPDM granules.

4. Dimensions / Tolerances

Width:	1250mm or 1500mm ($\pm 1.5\%$)	
Thickness:	4, 5, 6, 8, 10 and 12mm ($\pm 0.3\text{mm}$) / for Color 15 6mm* ($\pm 0.3\text{mm}$), for Color 5, 10, 20, 30, 50 (*Other thicknesses are available on request)	
Volumetric weight:	Approx. 1,050kg/m ³	
Roll length ($\pm 1.5\%$):	30m (at 4mm)	15m (at 8mm)
	24m (at 5mm)	12m (at 10mm)
	20m (at 6mm)	10m (at 12mm)
Area weight:	Approx. 4.2kg/m ² (4mm)	Approx. 8.4kg/m ² (8mm)
	Approx. 5.3kg/m ² (5mm)	Approx. 10.5kg/m ² (10mm)
	Approx. 6.3kg/m ² (6mm)	Approx. 12.6kg/m ² (12mm)

5. Product Testing

Fire resistance:	E _{fl} (B2)	(EN 13501-1)	
Tensile strength:	Approx. 1.5 N/mm ²	(EN ISO 1798)	
Elongation at break:	Approx. 90 %	(EN ISO 1798)	
Hardness:	60 \pm 5 Shore A	(DIN 53505)	
Temperature range:	-30°C to 80°C	(internal tested)	
Abrasion:	Max. 200 mm ³	(DIN 53516)	
Coefficient of friction:	> 0.30 μ (DS)	(EN 13893)	
Step sound insulation:	17 dB (at 6mm)	(DIN EN ISO 140-8:1998-03)	
	18 dB (at 8mm)	(DIN EN ISO 140-8:1998-03)	
Remaining deformation:	0.21mm (at 6mm)	(EN 433:1994-11)	
	0.13mm (at 8mm)	(EN 433:1994-11)	
Compression set:	Approx. 15%	(DIN 53517)	
Wear hardness:	Approx. 4.0MPa (At 5mm thickness)	(DIN 53577)	
Electrostatic properties:	0.5 kV	(DIN EN 1815:1995-06)	
Light fastness:	2-3	(DIN EN 105-B02:1999-09)	
Castor chair suitability:	For permanent use adapted (Tested at 8mm thickness)	(DIN EN 1307: 1997-06)	

TVS SPORTEC COLOR

Product Data Sheet Ref: PDS 1.1 TVS Color 0 - 50

Revision: 1.1

Issued: 01/02/2017