

Dunhouse

Dunhouse

NATURAL STONE

A HERITAGE SET IN STONE

Dunhouse have over 75 years experience in the quarrying and supply of dimensional building stone. We pride ourselves in being one of the UK's leading suppliers and offer a portfolio of Natural stones for the construction industry.

State of the art machinery is used to keep pace with the latest technological innovation and rapid growth in new building methods. Computer-controlled diamond circular saws and profiling machinery ensure natural stone maintains the tolerances required for modern design concepts and construction methods, providing competitive and aesthetically pleasing features for contemporary buildings.

Dunhouse Quarry is recognised as one of the market leaders for supplying masonry projects in the UK and our expertise and capacity has secured projects across Europe, USA and the Middle East.



CAPABLE AND ACCOUNTABLE

Dunhouse currently operate nine quarries in the North of England and Scotland. We quarry a wide range of stone, including buff stone from Northumberland and Durham, Scottish Red Sandstone, and Weardale self bedded paving and walling stone.

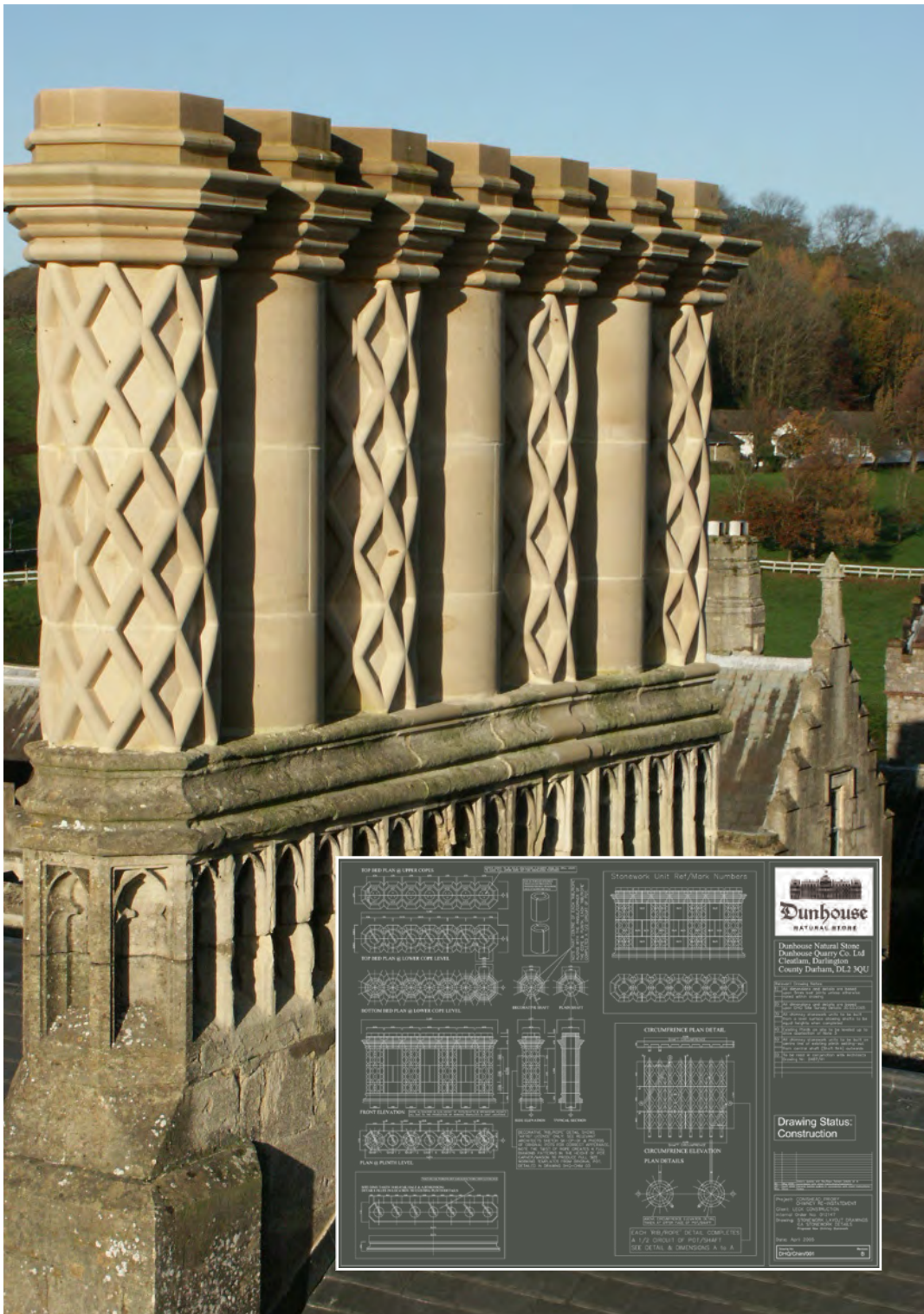
Large stock levels of block stone are maintained to ensure continuity of production.

Our factory at Staindrop is comprehensively equipped to supply bespoke masonry on any scale necessary, enabling us to take on the most challenging of jobs. For example The Scarborough Pier replacement required us to quarry 12000 tonnes of block and supply 1800m³ of masonry in twelve months.

Our Lathes and CNC machinery have turned columns and balustrade for many prestigious projects including column segments for Covent Garden and Victoria Bus Station.

We have had the pleasure in supplying the intricate carving to many restoration projects, notably, Jenners refurbishment (Edinburgh) and The Scottish National Portrait Gallery (Edinburgh) both requiring large scale replacement of fine masonry.





FROM THE DRAWING BOARD

At Dunhouse, we can offer a comprehensive design service for our clients. From conception to completion, we can assist with all of your design requirements, producing CAD drawings, full sized templates and providing three dimensional stone details.

We also accept client drawings in most formats, to edit and return with stone detailing, and references.



Case Study:

Project: Connishead Priory

Client: Harri Krishna

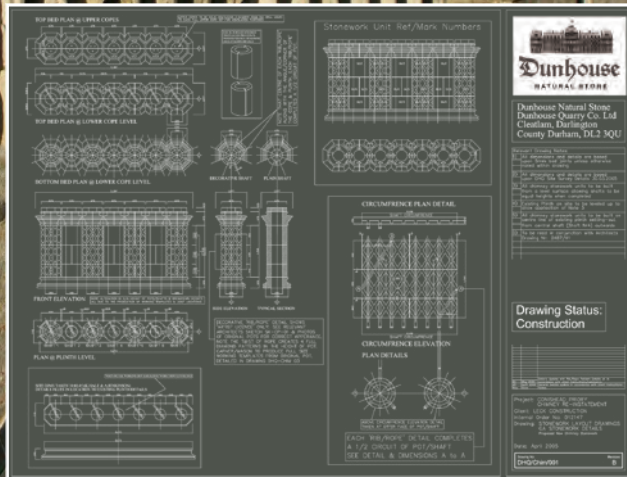
Main Contractor: Leck Construction

Year: 2005 – 2006

Stone Type: Dunhouse Buff

Scope of works:

- Take down unsafe masonry chimneys at high level
- Establish original detail and produce CAD drawings for the whole stack
- Replicate chimneys using Dunhouse Buff, re-establishing their original glory
- Re build the whole stack in situ



Dunhouse
NATURAL STONE

Dunhouse Natural Stone
Dunhouse Quarry Co. Ltd
Cleadon, Darlington
County Durham, DL3 3QU

Drawing Status:
Construction

DATE: April 2005

SCOTTISH NATIONAL PORTRAIT GALLERY (SNPG)



Stone Type: Corsehill



Opened to the public in 1889, The Scottish National Portrait Gallery was designed by Sir Robert Rowand Anderson as a shrine for Scotland's heroes and heroines. A great red sandstone neo-gothic palace which sits proudly on the city's skyline, is now a popular visitor attraction.

By the 1980's this elaborate building with its extensive sculptural embellishments, was in need of restoration, not least the four spires to the four corner towers which had been removed for safety reasons.

In order to match the stone used over 100 years earlier, the original quarry at Annan in Dumfriesshire needed to be reopened and block extracted to produce stonework to match the original (heavily carved) detail.

Dunhouse Quarry took on the contract and reopened the quarry in 1982 and still operate the quarry today (which we now own).

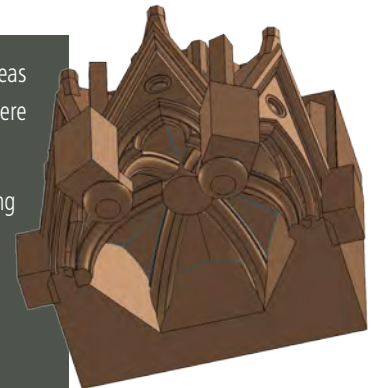
Block has been extracted and taken back to our factory in Staindrop, Co Durham to be worked upon since that time, and we have used our expertise to survey and replicate the original carving detail for the ongoing restoration program.

This process has been phased over the last 30 years and although the majority of the work is complete we expect to be working on the building for some time.



The angel above was one of four replaced in 2013 whereas the spires to the four corner towers, shown on the left, were completely replaced in the late 19 80's.

Today, accurate drawings are created in-house, using SolidWorks. These 3D drawings are then transferred to our CNC machine which carries out the first stages of the carving. The stones are, however, finished off by a carver using traditional methods.





cop crag

Fine grained yellow/pink variegated.
Sandstone suitable for all building.



northumberland buff

Medium grained honey/buff sandstone.
Suitable for all building applications.



blaxter

Medium grained honey/buff sandstone. Suitable for
all building applications.



bearl

Medium grained cream/buff variegated.
Sandstone suitable for all building applications.





dunhouse buff

Fine grained creamy buff sandstone.
Suitable for all building applications.



catcastle grey

Coarse grained brown/grey/variegated sandstone. Suitable for all building applications. Good paving and suitable for severe exposure areas such as sea walls and reservoirs.



catcastle buff

Medium grained buff/grey/variegated sandstone.
Suitable for all building applications.



corncockle

Medium grained red sandstone. Suitable for all building applications.





corsehill

Fine grained pink/red sandstone. Suitable for all building applications.



dunhouse blue

Fine grained blue/grey sandstone. Suitable for all building applications. Excellent for paving/steps and areas of severe exposure.



lazonby

Medium grained salmon pink, hard sandstone. Suitable for all building applications



dunhouse grey

Fine grained grey/buff sandstone. Suitable for all building applications. Excellent for paving/steps.

STONE SPECIFICATION



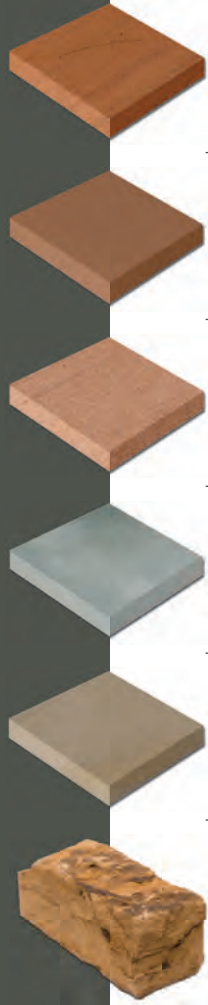
STONE	Ashlar Walling	Thin cladding fischer type system	Dressed / Carved stone	Rock faced walling	Rubble walling	Rockery stone	External flooring / Paving	External steps / platts	Internal flooring (requires sealant)
cop crag	✓	40mm min	✓	✓			✓	✓	✓
blaxter	✓	40mm min	✓	✓					✓
northumberland buff	✓		✓	✓					
bearl	✓		✓	✓					✓
dunhouse buff	✓	40mm min	✓	✓	✓	✓	Light use only, can discolour	Light use only, can discolour	✓
catcastle buff	✓	30mm min	✓				✓	✓	✓
catcastle grey	✓	40mm min	Dressings but not fine detail				✓	✓	✓

✓ = Recommended use

If there is no entry then we do not recommend the stone for this application.

Please feel free to call one of our advisors for further, or more specific, information.

STONE SPECIFICATION

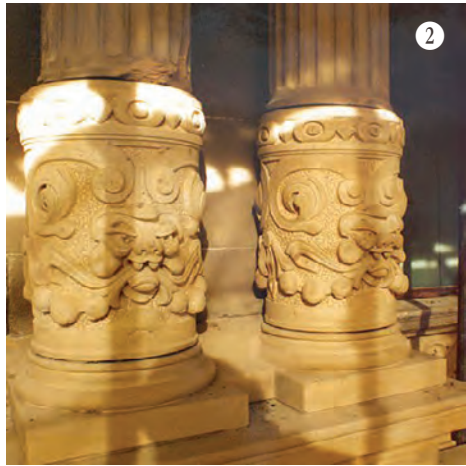


STONE	Ashlar Walling	Thin cladding fischer type system	Dressed / Carved stone	Rock faced walling	Rubble walling	Rockery stone	External flooring / Paving	External steps / platts	Internal flooring (requires sealant)
corncockle	✓		✓	✓	✓	✓			✓
corsehill	✓	40mm min	✓	✓	✓	✓	Light use only	Light use only	✓
lazonby	✓	30mm min	✓				✓	✓	✓
dunhouse blue	✓	30mm min	✓				✓	✓ Excellent	✓
dunhouse grey	✓	40mm min	✓				✓	✓	✓
dead friars					✓	✓	Riven paving only		

✓ = Recommended use

If there is no entry then we do not recommend the stone for this application.

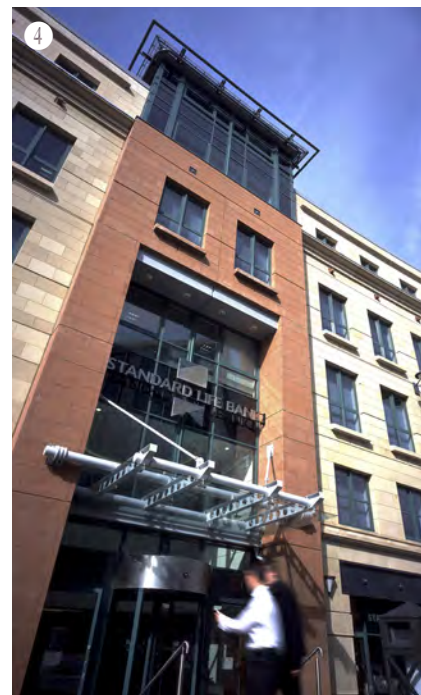
Please feel free to call one of our advisors for further, or more specific, information.

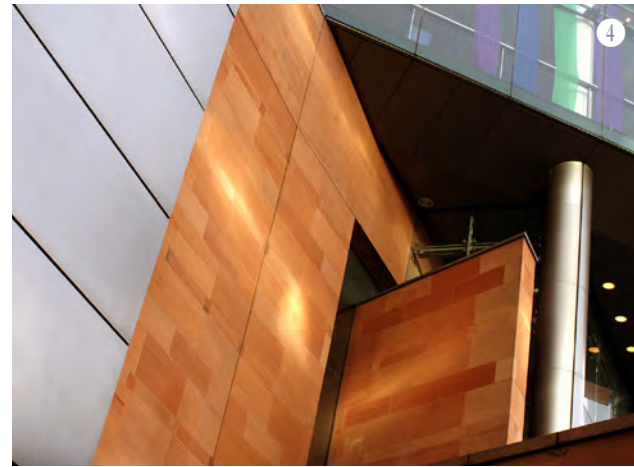
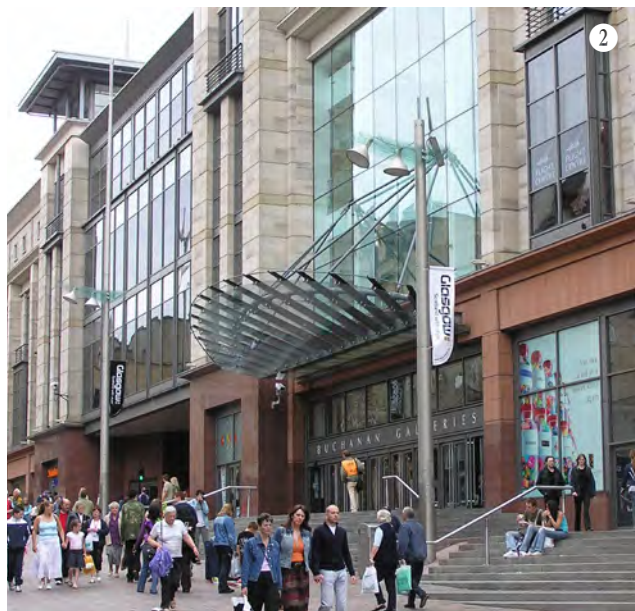


- 1 Project: Jenners Store, Edinburgh Stone: Blaxter
- 2 Project: Jenners Store, Edinburgh Stone: Blaxter
- 3 Project: SNPG Stone: Corsehill
- 4 Project: St Andrews Square, Edinburgh Stone: Dunhouse Buff
- 5 Project: Coundon War Memorial, Coundon Stone: Dunhouse Buff



① Project: Law Courts, Newcastle Stone: Corsehill ② Project: Reg Vardy HQ, Sunderland Stone: Blaxter
③ Project: The Rutland Building, Edinburgh Stone: Cop Crag ④ Project: Standard Life Building, Edinburgh Stone: Corncockle





- 1 Project: Clydesdale Plaza, Edinburgh Stone: Dunhouse Buff
- 2 Project: Buchanan Galleries, Glasgow Stone: Catcastle Grey (upper) Corncockle (lower)
- 3 Project: Shewglie House, Scotland Stone: Cop Crag
- 4 Project: Bridgewater Hall, Manchester Stone: Coreshill
- 5 Project: Private House Hale Stone: Corsehill





1

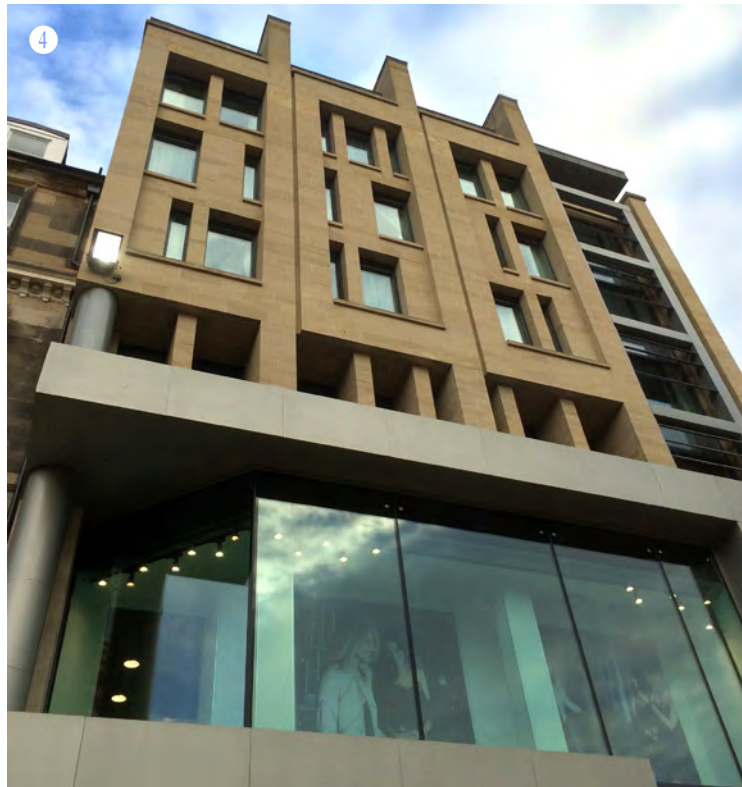


2

- 1 Project: Veterinary College, Edinburgh Stone: Cop Crag with Dunhouse Blue strings
- 2 Project: Skipton Building Society HQ, Skipton Stone: Dunhouse Buff
- 3 Project: Harvey Nichols, St Andrews Square, Edinburgh Stone: Catcastle Buff
- 4 Project: New Look Store, Princes Street, Edinburgh Stone: Northumberland Buff



3



4



1 Project: The Cube, Leith Street, Edinbrugh Stone: Dunhouse Buff
2 Project: Marketplace Hardscaping, Bishop Auckland Stone: Dunhouse Blue
3 Project: Morrisons Supermarket, Leith Stone: Bearl

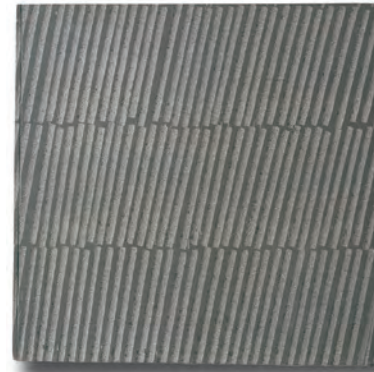




stugged



broached



droved



sparrow pecked



split face wallstone



picked



pitch face wallstone



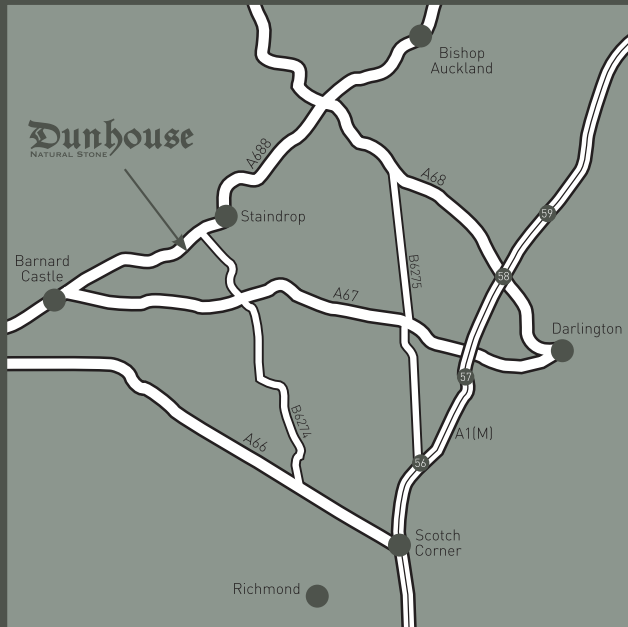
picked / smooth border



bush hammered



tooled



Dunhouse

NATURAL STONE

Dunhouse Quarry Ltd
Cleatlam, Darlington
County Durham
DL2 3QU

Telephone

- General Enquiries +44 (0) 1833 660 208
- Contract Sales Office +44 (0) 1833 660 999

Fax

+44 (0) 1833 660 748

Email

- General Enquiries enquiries@dunhouse.co.uk
- Sales Enquiries sales@dunhouse.co.uk
- Design Department design@dunhouse.co.uk

www.dunhouse.co.uk