

Green-tree roof garden substrates



Green-tree Roof Garden Substrates

The Green-tree range of topsoils and growing media is one of the most comprehensive in the industry. The latest addition to the Green-tree range includes Intensive and Extensive Green Roof Substrates, plus ancillary products that create the ideal growing environment for plants, shrubs and trees.

Air, Water & Nutrients

The Green-tree roof substrates have been developed in partnership with Landscape and Roofing Contractors, Architects and Designers, taking invaluable feedback and advice from these groups to achieve substrates that thrive in a harsh rooftop environment. Both substrates offer nutrient content to match the planting requirements of the project, excellent moisture and aeration characteristics plus efficient drainage properties.

Environmental Credentials

Manufactured from recycled materials, Green-tree Roof Garden Substrates offer an environmentally sustainable product. All ingredients that make up this highly organic



**Supplied nationally
from production
sites across the UK**

growing media are sourced locally to each production site. By sourcing all elements from the UK, the Green-tree brand can guarantee a truly environmentally friendly product from manufacture to installation.

Tried & Tested

The Green-tree Roof Garden Substrates have been installed on many projects across the UK, landscape and roofing contractors find the product easy to work with and provides a consistent supply from start to finish guaranteed.

National Supply

The team behind the Green-tree brand has many years of experience of dealing with bulk products ensuring delivery and distribution is timely and efficient. With production sites nationwide, there is never a site far away to supply your project.



Proud to be members of:





Green-tree Intensive Roof Garden Substrate

Green-tree Intensive Roof Garden Substrate is an established growing media within the Green-tree family of products. A blend of lightweight aggregate and the award winning Green-tree topsoil, the intensive roof garden growing media is ideal for green roof construction projects and particularly containerised planting. Lightweight in texture with good water-holding capacity, Green-tree Intensive Roof Garden Substrate guarantees healthy plants and trees in a roof garden environment.

Benefits

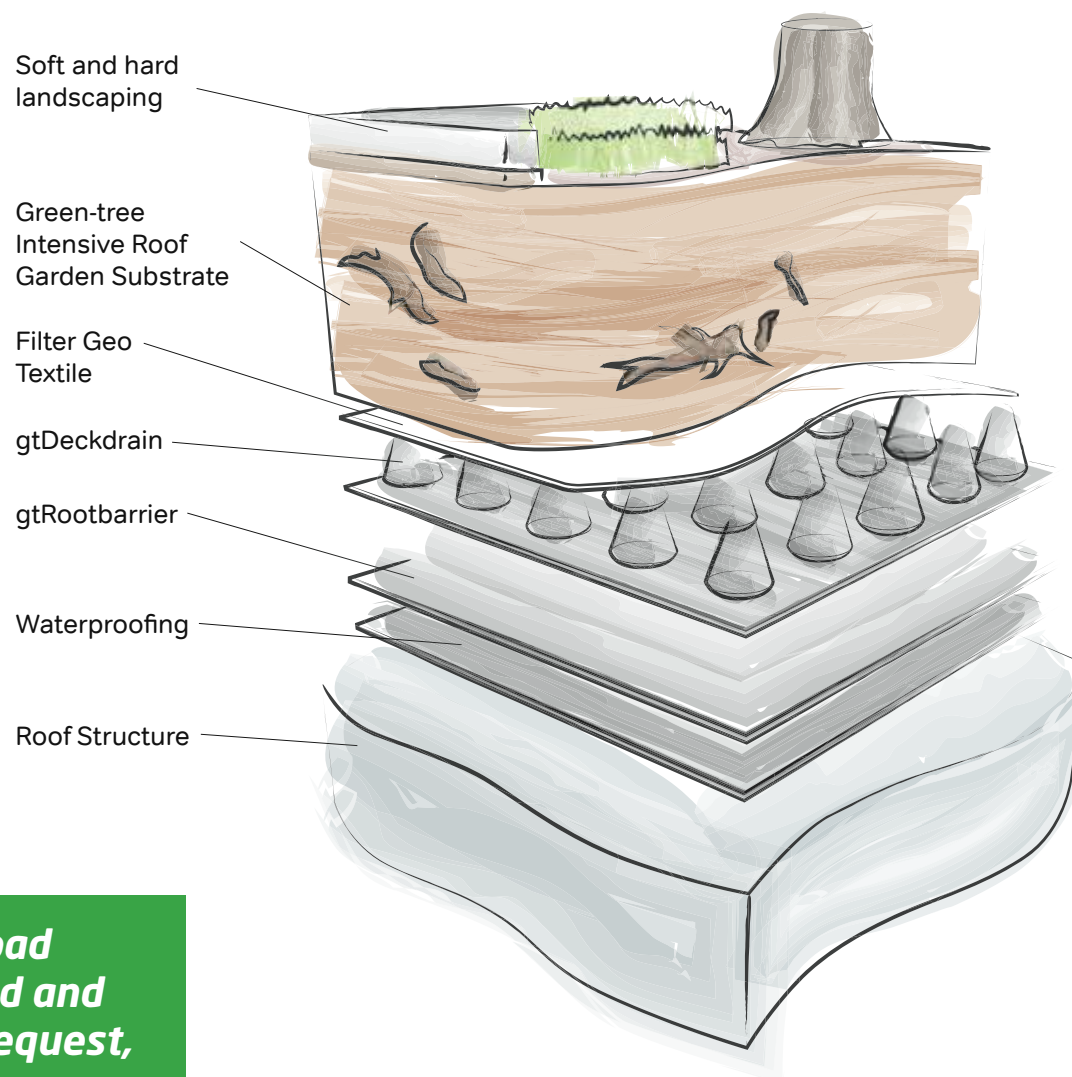
- Good levels of fertility
- Good water holding properties
- Excellent aeration properties
- Lightweight compared to standard soils
- A typical pH of 7.5 making it ideal for a wide range of plantings
- Typical bulk density at saturation point 1.32 tonnes/m³

Applications

- Containerised planting
- Soft landscaping
- Tree planting
- Decorative planting
- Allotment planting



***Moffat, Hi-Ab and Tail Lift Offload
available on request. Scheduled and
timed deliveries available on request,
speak to a member of the team.***



**Typical intensive roof garden construction*

Case Study

Streatham Park London

The project

Streatham Park is an exciting new development in South London offering modern apartments and leisure facilities. Two of the buildings are set around a landscaped roof courtyard and the entire site boasts exclusive landscaped walkways.

The solution

Willerby Landscapes won the landscaping contract and were looking for the lightest roof garden materials on the market but with good water holding properties. They wanted a company that could deliver consistent quality over a period of time. Green-tree supplied 440 bags of Green-tree Intensive Roof Garden Substrate and 25mm gtRoofdrain, a geocomposite drainage and water attenuation layer used for Green Roofs to provide a lightweight drainage layer and water reservoir to sustain plant growth. The site had many restrictions for access and only 10 (1.7m³) bags could be delivered at any one time. To accommodate this, the haulier made 44 visits to site between October 2013 and April 2014 to deliver the full 440 bags.

The outcome

Jason Smith of Willerby Landscapes Ltd commented:

“Streatham Park was a project including a fifth floor podium landscape installation with very specific logistical requirements. Green-tech was able to meet these challenges which included timed deliveries that were required to ensure the 440 x 1.7m³ bulk bags of light-weight soil and gtRoofdrain arrived on 6 wheeler and drag lorries as and when we needed.

We continue to use Green-tree on other schemes and with their high level of service have no hesitation in recommending them as a supplier of products for Landscape projects.”



Green-tree Extensive Roof Garden Substrate

Green-tree Extensive Roof Garden Substrate is ideal for incorporation into expansive green roof projects that require very little maintenance. A proven growing media, that is lightweight in texture and manufactured from the award winning Green-tree topsoil. Green-tree Extensive Roof Garden Substrate has a balanced nutrient content, ensuring quick plant establishment in harsh rooftop environments.

Benefits

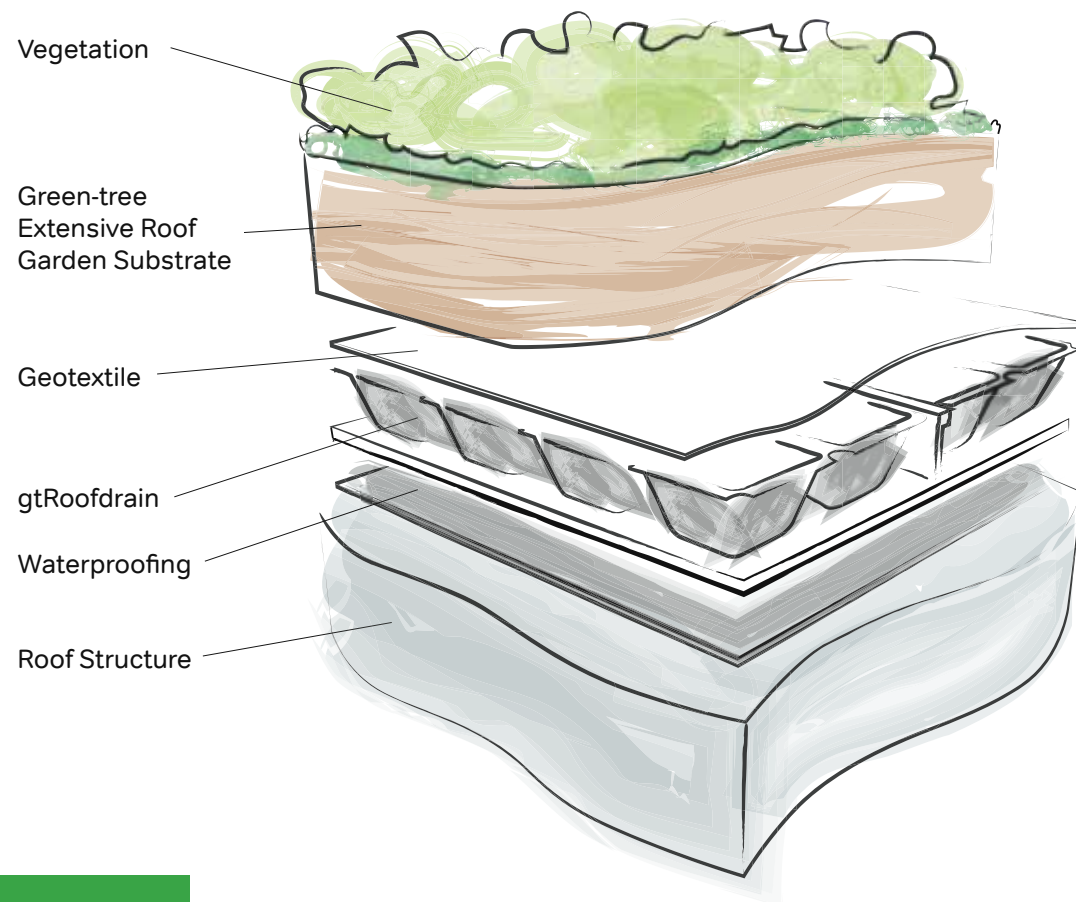
- Lightweight
- Controlled fertility levels
- Good aeration and water holding properties
- Simple to work with
- Guaranteed consistency throughout the green roof installation
- Typical bulk density at saturation point 1.03 tonnes/m³

Applications

- Extensive green roof planting with sedum
- Green roof planting with wildflowers and wildflower turf
- Moss planting
- Herb planting



Green-tree Extensive Substrate is widely used with plants, wildflowers, shrubs and sedum for green roofs.



*Typical extensive roof garden construction

Case Study

Queen Elizabeth Hospital, Gateshead

Green-tech has supplied the materials for a roof garden and landscaping at a new state-of-the-art £23m emergency care centre at the Queen Elizabeth Hospital in Gateshead.

The new courtyard roof garden, designed by Southern Green Architects was to provide colour and height with minimal maintenance, all within the load bearing constraints associated with a roof garden.

Grace Landscapes won the contract to provide the landscaping and enlisted the help of landscape suppliers Green-tech to supply Green-tree Extensive Roof Garden Substrate and gt Roofdrain which are the essential key products of a roof garden. Green-tech also supplied GRB Plus which provides ground protection and stabilisation and basalt chippings which offer a decorative finish.

The new emergency care centre includes accident and emergency facilities, a 36 bed short stay unit, a new main entrance for the hospital and specialist diagnostic equipment. It proposes to be a one stop shop for the people of Gateshead and the surrounding area. The courtyard roof garden offers a soothing view for the patients and visitors of the emergency care wards.

Green-tech technical advisor Richard Gill adds,

“Green-tree Extensive Roof Garden Substrate is ideal for green roof projects that require little maintenance. It is lightweight in texture and rich in nutrients which ensure quick plant establishment in harsh rooftop environments.

gt Roofdrain provides an easy-to-install lightweight drainage layer and water reservoir to sustain plant growth. This is ideal for roof gardens where appropriate drainage is essential and the basalt chippings are lightweight and used for decorative purposes within the landscaping scheme.”

Darren Hardman North East Regional Manager from Grace Landscapes endorsed Green-tree, saying

“We’ve worked with Green-tree for a number of years. Their advice and attention to detail is always appreciated. They stock a huge range of products and can always deliver quickly. Their roof garden products were perfect for this job and we were delighted with the results, as is the client.”



Ancillary Products

gt Roofdrain

Forms a lightweight high performance drainage layer with integrated filter geotextile. Using gt Roofdrain allows for the collection and storage of water to irrigate the plants during low rainfall periods whilst providing a continuous drainage layer across the roof structure. The core acts as a water reservoir for plant roots to access in dry periods. gt Roofdrain is ideal for extensive green roofs as it provides a lightweight drainage layer and water reservoir to sustain plant growth.

Benefits

- Prevents plants from drying out
- Prevents waterlogging
- Provides drainage
- Assists in roof cooling
- Lightweight
- Easy to install

	Thickness	Reservoir Capacity (l/m ²)
Roofdrain 20	20mm	5.5
Roofdrain 25	25mm	4.3
Roofdrain 40	40mm	12
Roofdrain 60	60mm	23



gt Deckdrain

Forms a lightweight high performance drainage layer with integrated filter geotextile that eliminates clogging within the drainage structure that provides a continuous drainage layer across the structure. It has been specifically developed to provide high flow capacity and added protection to waterproofing for intensive green roofs. gt Deckdrain is durable and sufficiently robust to resist the mechanical stresses imposed during installation and then on throughout its design life.

Benefits

- Provides continuous drainage
- Protects the waterproofing layer
- Durable and robust
- Consistent irrigation for plants, shrubs and trees
- Lightweight
- Simple to install

	Thickness	Flow Rate*	Puncture Resistance
Deckdrain 700	7mm	0.67	2400N
Deckdrain 1200	12mm	1.25	2300N
Deckdrain 2500	25mm	4.30	4800N
Deckdrain 5000	50mm	29.00	N/A



Require a project specific growing media? Call the Green-tree team today.

Ancillary Products

Green-tree also supplies items to secure, protect and enhance your roof planting, please call today for more details.



D-MAN System

Secures trees in shallow planting areas. Ideal for tree planting on green roof projects.



John Chambers Wildflowers & Wildflower Turf

British native wildflower seed from the leading UK supplier. Mixes designed to suit the roof environment and soil type. Also available in plugs



SkyPlugs

Available in a variety of recommended green roof species, specially grown to cope with a harsh rooftop environment to ensure better establishment and survival.



Ornamental Bark

A mulch product that aids the growth and development of newly planted trees in roof environments. Offers a quality, high performance mulch material.



Decorative Aggregates

Over 20 types of gravel, pebbles, cobbles and slate available. All provide a low-maintenance solution for roof garden areas.



Mona Plant System

Subterranean irrigation for your roof planting scheme. Reduces watering frequency. Naturally irrigates, no requirement for mechanical fixings.



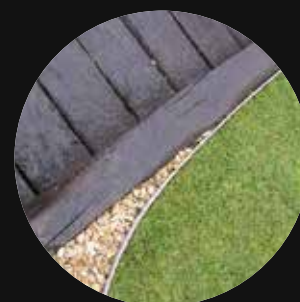
gtRootbarrier

Manufactured using a unique coating to make it totally impermeable. Protecting roots and the soil structure from invasive growth or pollutants.



Green Screens

Green screens provide a practical solution for green roof projects. Used as protection from the wind or as demarcation the ivy planting will survive even the toughest environments.



Rite-Edge

Aluminium landscape edging that creates defined borders and edges. Offers greater flexibility with green roof design and will not rot, crack or rust.



Wildlife Habitats

A range of wildlife habitats is available to increase the biodiversity of your green roof project.

Technical Support here to help

The Green-tree team has a wealth of experience of urban greening projects, their range of product solutions are designed to enhance plant growth and longevity.

The team can offer a range of professional seminars, technical drawings and project-specific guidance to assist with planning a green roof.

CAD & Installation
guides available on request

Professional Seminars Available @ Your Workplace



Green Roof Substrates & Installation

- Nutrient, water and air requirements for green roof substrates
- Bulk density and weight
- Water holding requirements of green roof substrates



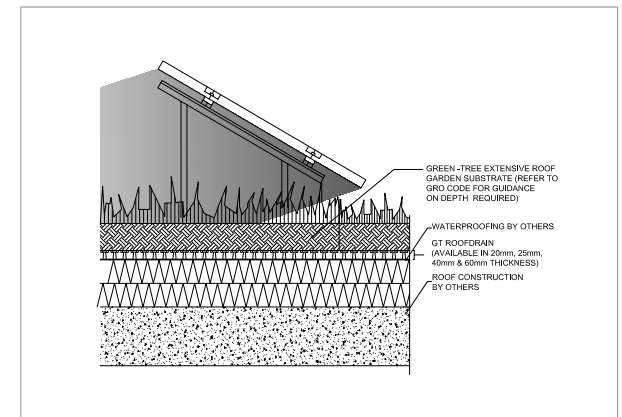
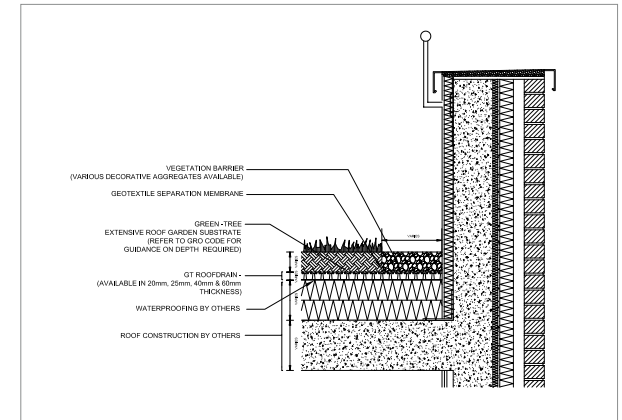
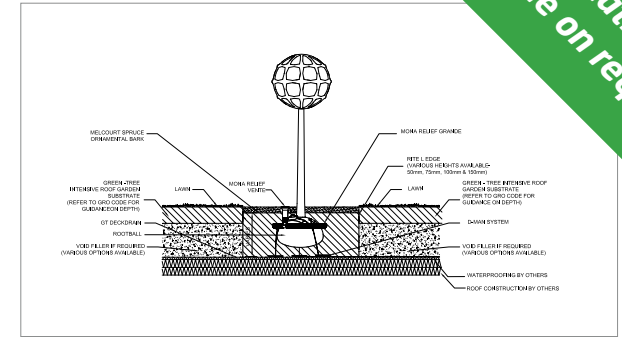
Tree & Plant Irrigation

- An introduction to irrigation methods
- The plant or tree's watering requirements
- Installing an irrigation system
- Subterranean irrigation systems



Guide to Good Soils

- The difference between manufactured, natural and screened topsoils
- The use of tree soils and load bearing soils
- Growing media used in green roof construction



Green-tree supporting the GRO Code



The team behind Green-tree are active supporters of the GRO (Green Roof Organisation) Code. The code offers guidance and best practice guides for the installation of a green roof in the UK. It incorporates technical information from manufacturers, distributors and installers from across the UK and considers the effect of the increasing popularity of green roof installations in modern developments.

The GRO Code covers the areas of biodiversity, sustainable drainage and BREEAM highlighting the benefits of a green roof against these considerations. It also offers installers a guide to selecting the correct growing media, drainage, rootbarriers and vegetation. For more information or to download a copy of the GroCode please visit

www.green-tree.co.uk

Meet the Team

The Green-tree soil production team has a wealth of experience in the manufacture and delivery of topsoil, growing media and bulk goods. They understand site constraints and will always ask the right questions to make sure your roof garden substrate is delivered on time in excellent condition.



Mark Wood
Business Manager

E: markw@green-tech.co.uk



Roxanne Lupton
Administration Manager

E: roxannel@green-tech.co.uk



Frankie Helliwell
Sales Advisor

E: frankieh@green-tech.co.uk





**Green-tech Ltd
Rabbit Hill Park
Great North Road
Arkendale
Knaresborough
HG5 0FF**

T: 01423 332171

F: 01423 332101

info@green-tree.co.uk

**Opening Hours
Monday-Friday 8am-5.30pm**



Green-tree is a trading style of Green-tech Ltd.