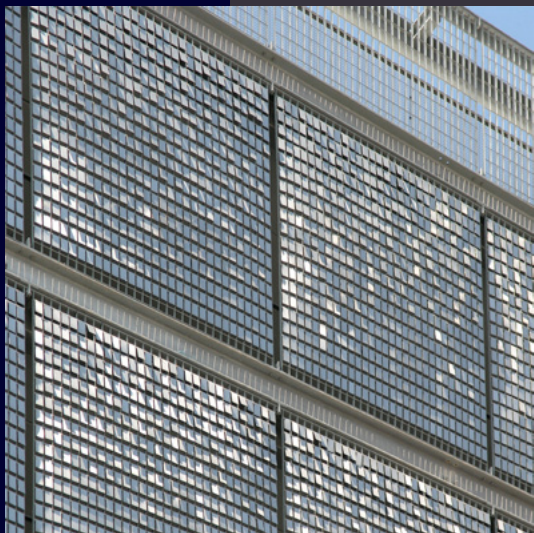
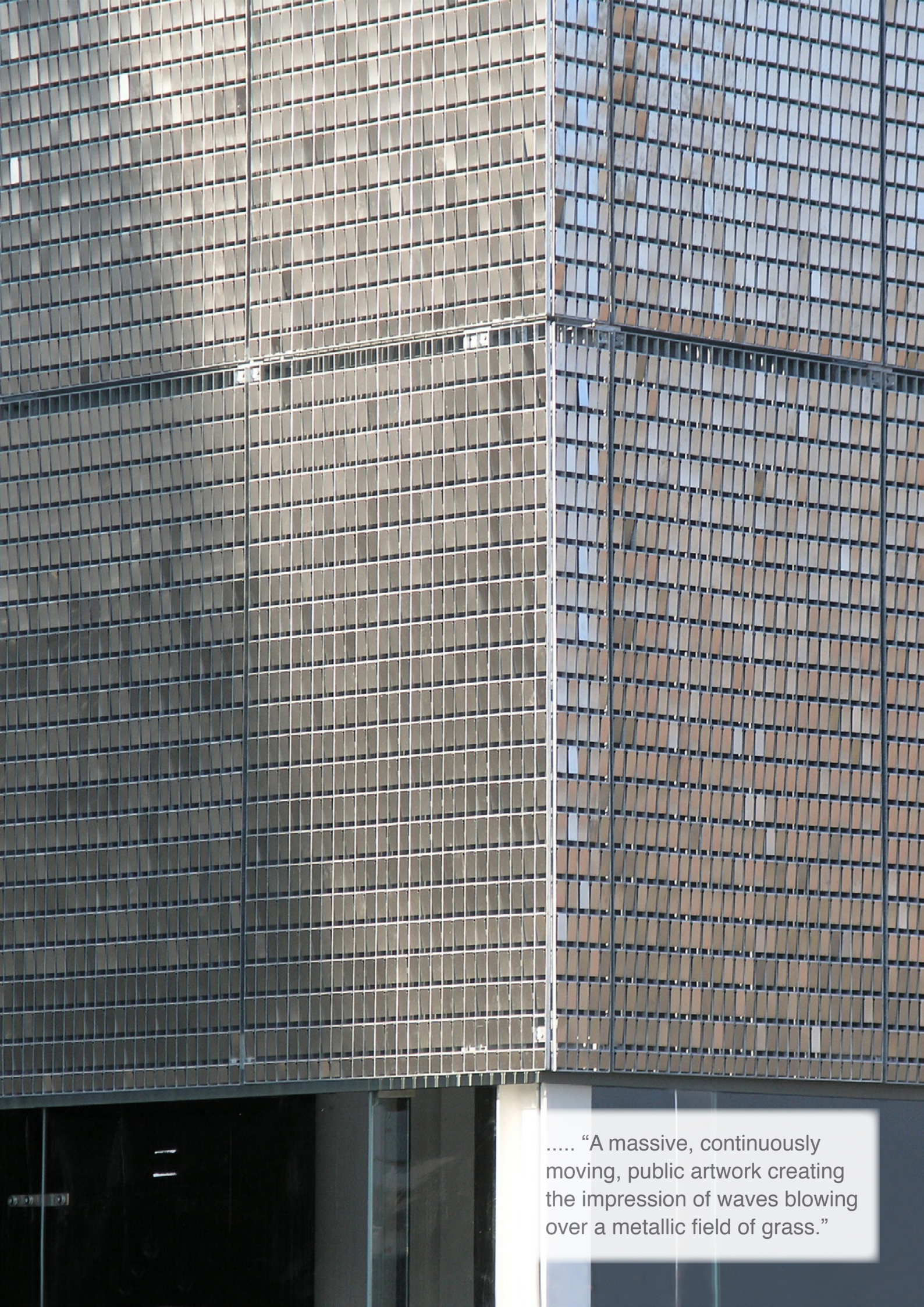


— LANG+FULTON —

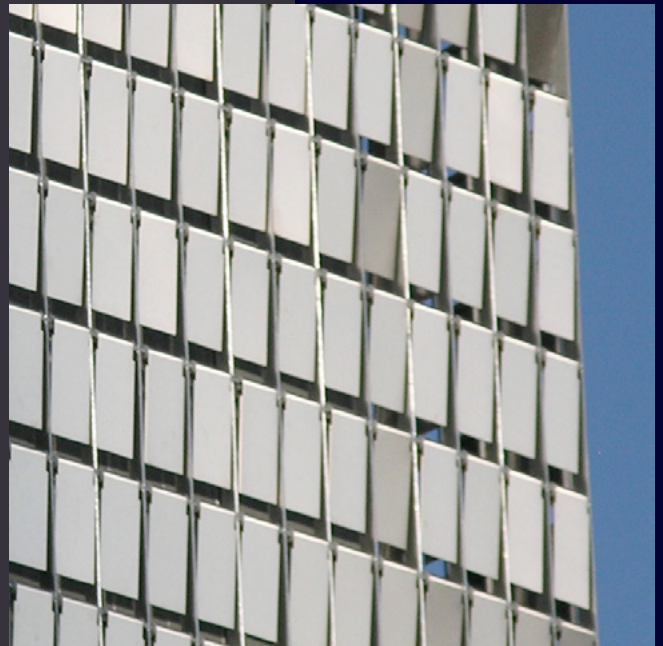


STEREO-KINETIC
Cladding System



..... “A massive, continuously moving, public artwork creating the impression of waves blowing over a metallic field of grass.”

A STEREO-KINETIC facade is made using hundreds of stainless steel tiles which are suspended from grating panels. Gusts of wind or the movement of traffic cause the metal rectangles to ripple in an ever-changing display.



Lang+Fulton work closely with the architect from concept to final design, preparing CAD drawings and advising on support steelwork, alternative fixing methods and loading specifications to current British Standards.

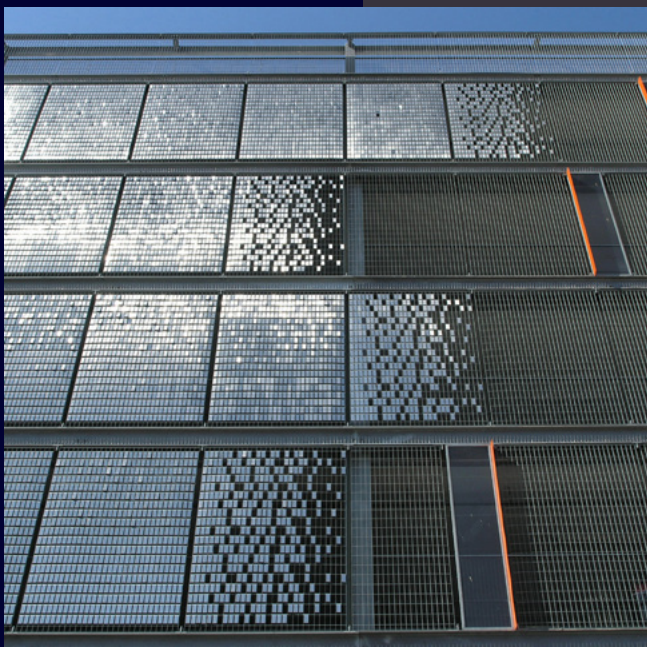
Fully finished panels are supplied to custom sizes together with all components to provide a complete package.

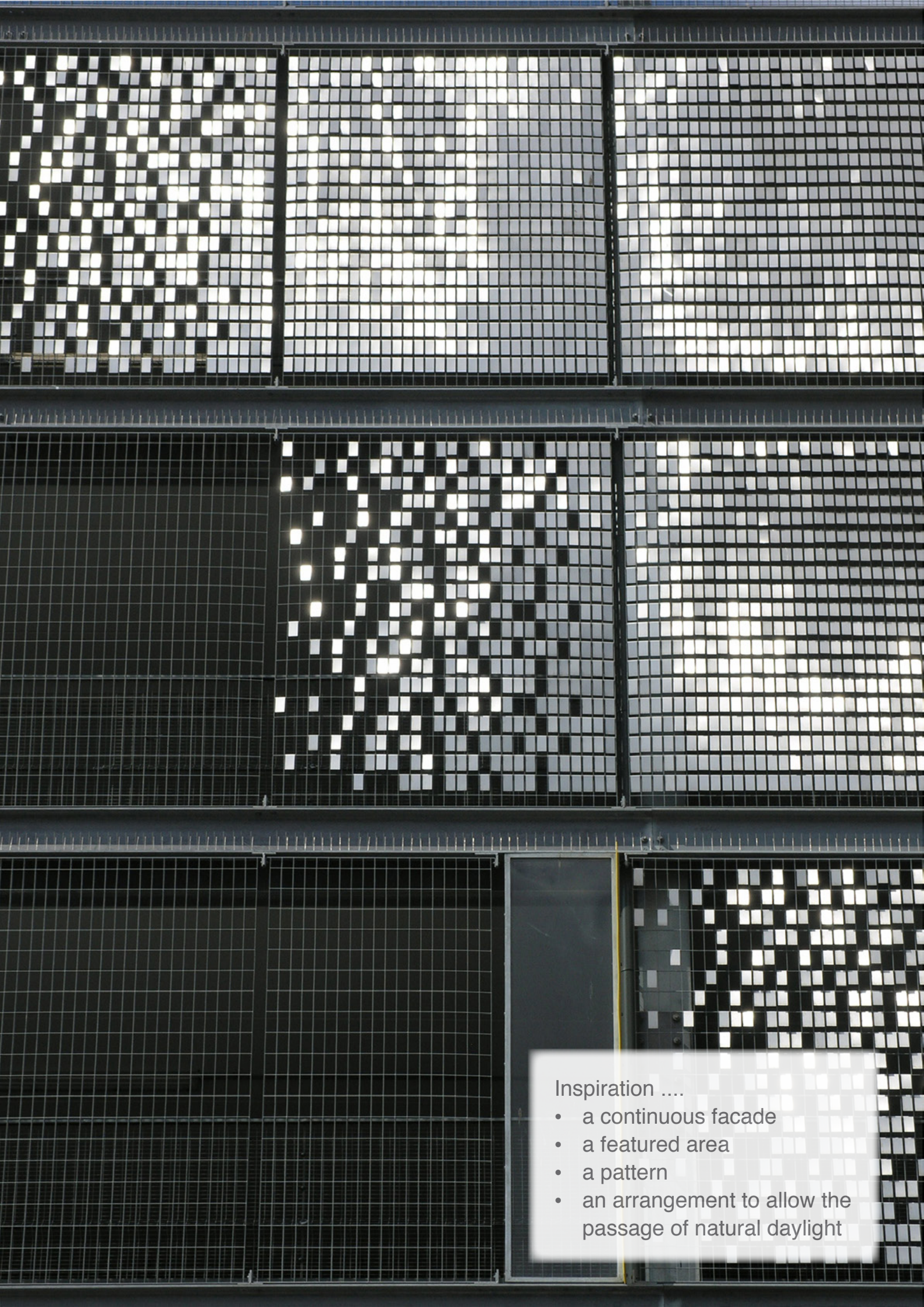
Panel Dimensions: maximum recommended size 3000x1874mm.

Finishing:

Marine Grade Stainless steel: brushed (alternative grit range).

Mild Steel Gratings: hot-dip galvanized to BS EN ISO 1461 for long term durability and a low-cost life cycle.





Inspiration

- a continuous facade
- a featured area
- a pattern
- an arrangement to allow the passage of natural daylight



Olympia Car Park

A collaboration between Lang+Fulton and Dundee City Council: the STEREO-KINETIC wall cladding system was applied to the eastern facade of the car park. Viewed from the outside the entire wall appears to move while on the inside, intricate patterns of light and shadow, similar to the way light filters through trees, are projected onto the walls and floor.

Two different types of panel were used with a smaller aperture grating for the infill at ground level to provide enhanced security. The panels were radiused at the corners of the building and spaced at intervals to include glass inserts. Each panel was fixed by bolting to the structural steel framework.



H&M Store Extension

The frontage of the Ocean Terminal shopping centre in Edinburgh received a radical makeover as part of a major investment to increase footfall by enhancing the visitor experience. In addition to 70 shops, cinema, spa, gym, cafés and restaurants Ocean Terminal is home to the Royal Yacht Britannia.

The kinetic artwork has been applied in such a way as to allow the passage of natural daylight through the underlying window openings on the second floor level.

Architects Keppie, say that the new extension, “develops a more affirmative relationship with the street, coming out from the shadows of the overhang, providing a new entrance and visual connectivity with the interior.” The new extension has also created a high-profile extension to the retail space of H&M.



CASE STUDY

Festival Place, Basingstoke

- Multi-storey Car Park
- Refurbishment

Festival Place, Basingstoke

Lang+Fulton worked with Bell Associates on the refurbishment of the 3,000 space car park, which had been built in 2002.

The new facade has transformed the dated appearance of the original car park and links it to a new extension with one seamless frontage.



The STEREO-KINETIC façade was mounted on an independent steel frame which was bolted back to the existing structural steelwork.

Detailed ventilation and glare studies were conducted to ensure that the project fully complied with regulations and site specific conditions.

The gradation of the stainless steel tiles was calculated to allow for the required level of ventilation, with large areas of open grating to allow for the very poor air flow through the building. Where the panels were mounted on the overpass, which crosses the A3010, no tiles were fixed to the bottom row of grating and the level of polishing to the tiles was reduced to minimise glare.





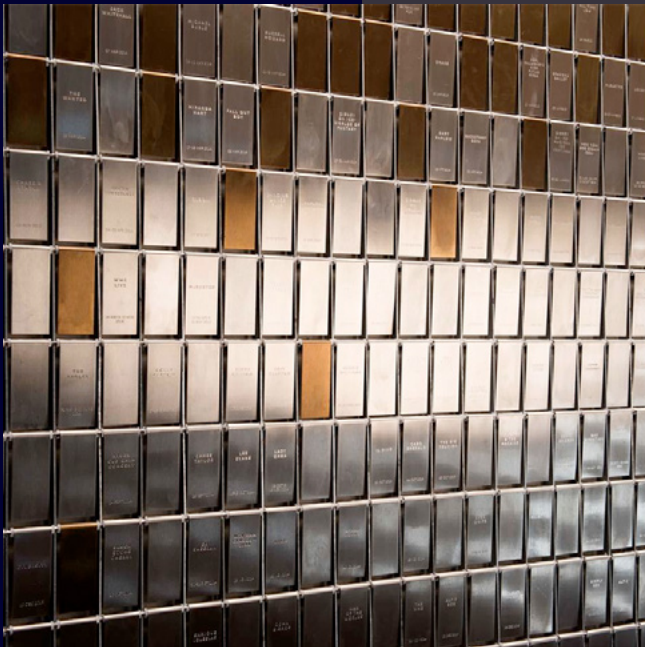
Steel grating is a low cost material for wall cladding with many practical attributes:

- ventilation
- protective barrier*
- security
- bird screen
- natural daylight

*Panels can be made to accept the horizontal loadings for pedestrian barriers up to a 3m span (BS 6399-1).

STEREO-KINETIC cladding can be used as a decorative installation, both internally and externally.

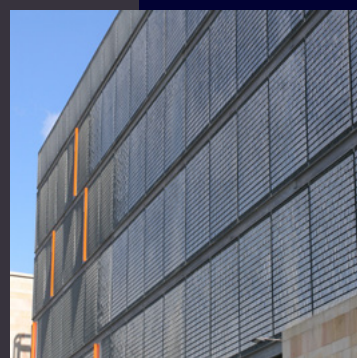
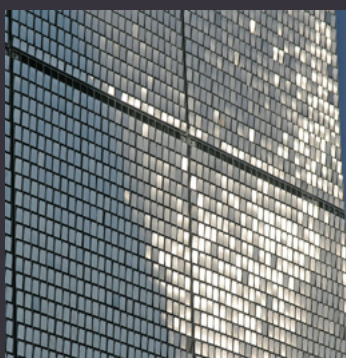
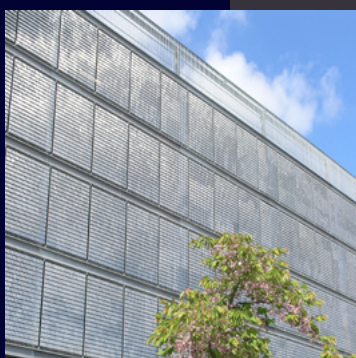
Small quantities of tiles can be heat treated to create different shades of bronze.



The SSE Hydro in Glasgow, designed by Foster + Partners, is the biggest performance arena in the UK. The dramatic structure takes the form of a skewed dome, with external walls clad in translucent air-filled ETFE cushions that can create a dazzling illuminated facade.

The project at the SSE Hydro was the first occasion when STEREO-KINETIC cladding panels were used for internal decoration. Each stainless steel tile is engraved with the name of an artist, commemorating their performance.

The result was a stunning and imaginative method of covering the drab concrete wall which greets the high-profile performers who appear at the arena.



LANG+FULTON

Lang & Fulton Ltd, Newbridge Industrial Estate, Newbridge, Edinburgh EH28 8PJ
t: 0131 441 1255 sales@langandfulton.co.uk www.langandfulton.co.uk

Stockholding Depot: Cygnus Point, Black Country New Road, West Bromwich B70 0BD