

Armitage Shanks  
Armitage  
Rugeley  
Staffordshire  
WS15 4BT

Armitage Shanks  
M50 Business Park  
Ballymount  
Dublin 12  
Ireland

Tel 01543 490253  
Fax 01543 491677

Tel + (353) 01 456 4525  
Fax + (353) 01 456 4505

[www.thebluebook.co.uk](http://www.thebluebook.co.uk)

Recommendations in this guide are based on Armitage Shank's interpretation of information from sources including, but not limited to, those listed below. The onus is on the specifier to ensure their designs are in line with current legislation and best practice, wherever possible by direct reference to relevant publications.

Sources and publications  
Toilets in Schools (3), Department for Education and Skills 2007  
Halifax Holy Trinity Primary School, Ofsted Report 2008  
Toilets not to be humoured, The Guardian, November 2006  
Lifting the Lid, Children's Commissioner for Wales 2004  
Schools, Building Research Establishment Environmental Assessment Method 2007  
Primary Exemplar Design Brief, Building Schools for the Future 2005  
The Bog Standard Campaign, ERIC 2007  
Approved Document M, The Building Regulations 2000 (2004 Edition)  
BS 6465-1:2006, Sanitary Installations, BSI 2006

## the essential specifiers series

If you would like to request the Hospital,  
Brassware or Part M brochures from our  
'Essential Specifiers Series',  
**call 0800 590311**



Available later in 2008

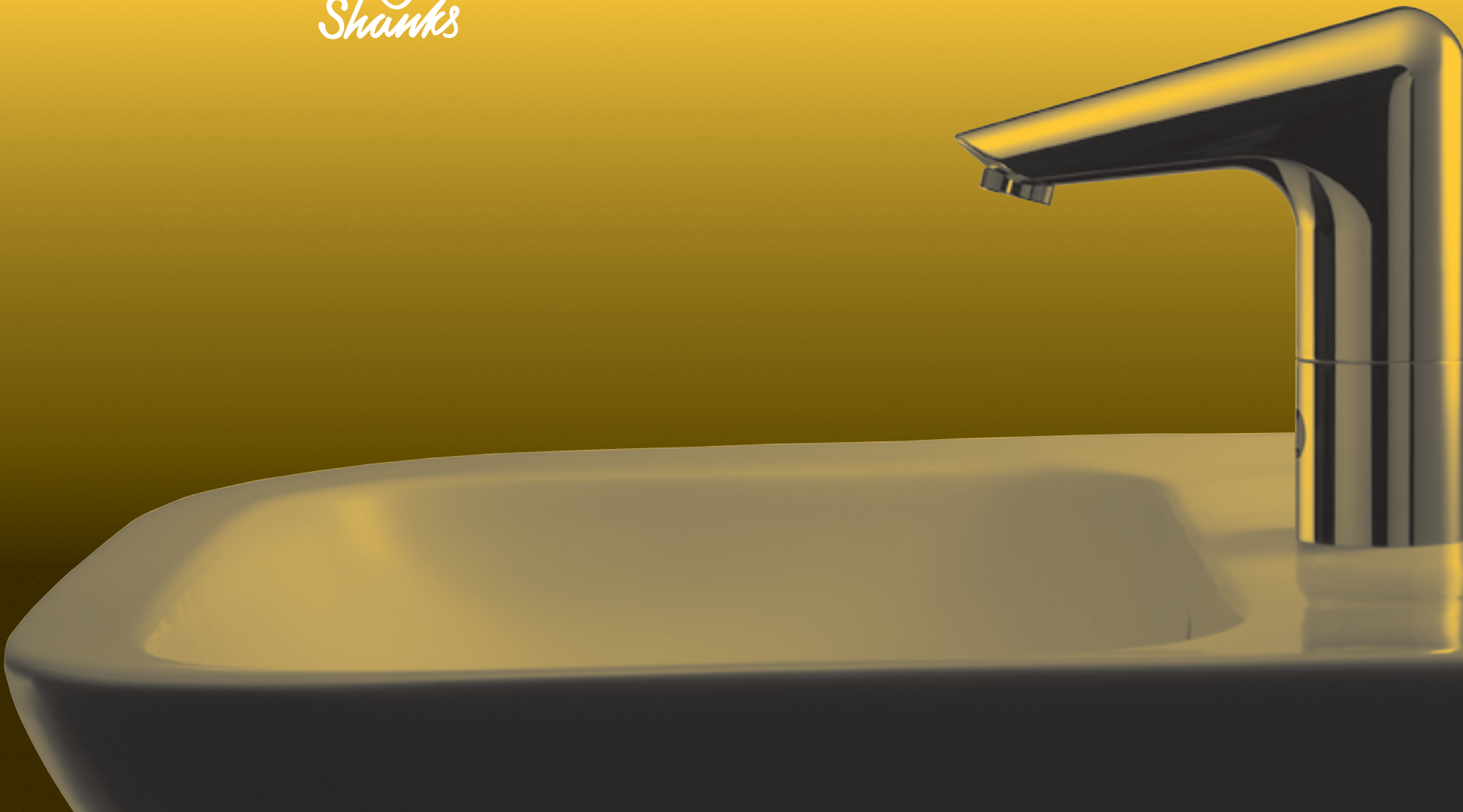


*Armitage  
Shanks*

# school solutions... what works and why

an informative guide to:  
school washroom requirements

*Armitage  
Shanks*







In 1817 Thomas Bond founded the company that would become Armitage Shanks with a simple objective; to produce sanitary ware of exceptional quality. Over the last 190 years, investment in technology and traditional manufacturing skills has remained at the core of the business.

Armitage Shanks has a history of innovation, a tradition of product development and a commitment to sustainable design. These factors manifest in a comprehensive product range that is a ‘one stop shop’ for the specifier.

Part of the Essential Specifiers Series, a collection that will make the process of selecting the right product much simpler, this guide provides the information needed to ensure you meet the needs of your client and current legislation.

As the market leader Armitage Shanks believe they have a responsibility to help define the modern washroom. For almost two centuries they have literally set the standard.

‘School toilets have long been a place children endured or avoided and have contributed to many pupils ill health. The Bog Standard campaign is working to change this. Schools are now experiencing the benefits of thoughtfully designed, properly maintained, welcoming toilets.

Working with pupils to create toilets they value and can use when they need them has a positive influence on their health, willingness and ability to learn, their behaviour and attendance levels.

Armitage Shanks is the first manufacturer that we know of to design products to meet recent Government guidance on school toilets. This guide should offer inspiration to designers and schools alike.’

Nickie Brander  
The Bog Standard Campaign

# your questions answered... the definitive guide to school requirements where, who, when, what...

The contemporary school must be able to satisfy many disparate needs; the provision of basic educational facilities, the creation of an empowering learning environment and the establishment of a safe and nurturing space. School washrooms must be designed to meet these needs.

Research has vindicated the common sense belief that clean, safe and functioning school toilet facilities promote improved behaviour. Educational theory tells us that learning continues outside the classroom and that attitudes and beliefs are shaped by all aspects of the school, including physical ones. By providing welcoming toilets a school can communicate to its pupils that it has their welfare at heart.

This ethos is at the centre of the ‘Bog Standard’ campaign. Launched in 2004 in partnership with Schools Council UK and backed by Westminster, it has three objectives; to promote the health benefits of good school toilets, to raise the standard of school toilets and to ensure minimum requirements in UK school toilet provision are met. Armitage Shanks, the primary

sponsor of the campaign, has been a key supplier to schools since 1910. For almost 100 years it has worked with Local Authorities to advance performance of school washrooms.

The government’s ‘Building Schools for the Future’ programme represents the largest investment in school buildings for 50 years. Local Authorities now have the funds to improve their schools. Many are investigating how building design can improve welfare discipline and academic attainment.

Local Education Authorities are encouraged to save water and Armitage Shanks has developed products specifically for this purpose. Such environmentally friendly products must also be robust, durability is designed into the Armitage Shanks range of school products.

The result of working closely with leading architects in the field, this guide will illustrate practical layouts, inspirational ideas and cost effective solutions to providing a 21st Century washroom fit for our children.

## Contents

### Information

- Scale of provision (02)
- Overview (04)

### Product offering

- School washrooms:  
Building for tomorrow today (06)
- Secondary, ages 11+ (10)
- Secondary, ages 11+ (16)
- Primary, ages 7–11 (20)
- Primary, ages 3–6 (26)
- Case study (32)
- Showers (36)
- Part M (39)

### The facts

- Achieving water efficiency (44)
- The water technology list (45)
- Enhanced capital allowance (45)
- Water efficiency (45)
- BREEAM (45)
- The Bog Standard campaign (46)
- The washroom environment (46)
- Hygiene (47)
- Durability & maintenance (47)





**Q: what are the scale of provision requirements for pupils in schools?**

**A: washroom facilities in schools must be tailored to a range of educational needs and pupil ages. BS 6465 describes these minimum requirements in section 6.7.**

**the primary consideration when designing any washroom facility is the number of people who will use it. BS 6465-1: 2006 contains detailed information on this issue, broadly defined as ‘scale of provision’. the data is summarised in the table below.**

**the objective of the BSi is to ensure that toilet facilities are quickly accessible, accommodate the needs of all users and do not necessitate queuing.**

washroom facilities in schools			
type of school	sanitary item	no. of sanitary items	remarks
special	wc and urinal	1 per 10 pupils, or part thereof	Not more than 2⁄3 of boys appliances to be urinals
	washbasin	1 per wc or urinal	Every wc or urinal to be close to a washbasin
	shower	1 per 10 pupils, or part thereof	Where provided
nursery	wc	1 per 10 pupils, or part thereof, not less than 4	
	washbasin	1 per wc or urinal	
	sink, bath or shower	1 per 40 pupils	
primary	wc and urinal	1 per 10 pupils under 5 years 1 per 15 pupils over 5 years or part thereof	Not more than 2⁄3 of boys appliances to be urinals
	washbasin	1 per wc or urinal	Every wc or urinal to be close to a washbasin
	shower	1 per 10 pupils, or part thereof	Where provided
secondary	boys wc and urinal	1 per 20 pupils, or part thereof	Not more than 2⁄3 of boys appliances to be urinals
	girls wc	1 per 20 pupils, or part thereof	
	washbasin	1 per wc or urinal where there are up to 3 appliances 2 per 3 wcs or urinals where there are more than 3 appliances	Every wc or urinal to be close to a washbasin
	shower	1 per 10 pupils, or part thereof	Easy access for all places where physical education takes place
boarding school (residential)	boys wc and urinal	1 per 5 boarders, 2⁄3 to be urinals	These provisions are in addition to those sanitary items shown above in this table, unless they are close to living and sleeping areas
	girls wc	1 per 5 boarders	
	washbasin	1 per 3 boarders	
	bath and shower	1 per 10 boarders, minimum 25% to be baths	



Washroom facilities for disabled staff and pupils must also be provided, as generally described in Section 7 of BS 6465 and the Armitage Shanks ‘Part M’ Essential Specifiers Series guide.

Teaching staff toilets should be generally as described in Section 6.4 of BS 6465 and the Armitage Shanks ‘Office’ Essential Specifiers Series guide.

Schools with pupils eight years old and above should provide additional separate changing and washroom facilities for PE staff in line with Section 6 of BS 6465, as applied to the number of PE staff only.

School buildings over 100m² should feature dedicated cleaners facilities, a basic outline of these requirements is contained in Section 5.5 of BS 6465.

All schools must provide a medical room, as described in Section 6.7.3 of BS 6465. This room should have a minimum of one washbasin and be reasonably near a WC.



**Q: how can a cost efficient washroom be designed that improves student discipline, and academic achievement?**

**A: by addressing the needs of both school and pupils. for top marks, make sure all the boxes are ticked.**

**1. layout** ✓

Current thinking encourages an open plan approach incorporating clear sight lines, eliminating hidden corners and the adoption of visible and potentially unisex hand-washing areas. Exemplar designs prepared for ‘Building Schools for the Future’ omit any areas where children may feel isolated or vulnerable.

**2. environment** ✓

Children often avoid using school toilets through fear. Modern design must address the factors that prohibit use. The goal is an open, bright, durable, low maintenance space in which pupils feel comfortable and safe, an environment that supports learning and encourages respect for each other and their surroundings.

**3. product** ✓

Specifying the best product for the job will save your clients money. Intelligent design and built-in durability will reduce long-term maintenance and cleaning costs. Water efficient mixers and sanitaryware will cut water bills while a real guarantee with after sales support gives invaluable peace of mind.

**4. safety** ✓

A washroom in an isolated spot, away from the classroom areas, will be perceived as unsafe by younger children and as a place to exercise their ‘power’ by older pupils. Locating the washroom within the heart of the school sends a message that appropriate standards of behaviour still apply.

**5. water efficiency** ✓

Selecting washroom products from the Water Technology List could contribute to water savings of up to 50% per annum for a school. By working to BREEAM guidelines your client receives a building that can clearly demonstrate compliance with environmental requirements and best practice.



2.

3.

**Sensorflow 21**  
This 'no-touch' basin spout is the ideal anti-vandal outlet for schools. Water supply is shut off if the sensor is obstructed for a prolonged period to optimise water economy.

**Cherwell Basin**  
Fitting the basin under the countertop maximises the available surface area of the countertop and simplifies cleaning and so improves hygiene.

**Tonic WC**  
A wall hung WC raises the bowl off the floor for easier and faster cleaning.

**Jasper Morrison Urinal**  
Some children find using a 'trough' urinal to be embarrassing. Individual urinals, with or without a partition, offer the pupil increased privacy.



**BUILDING FOR TOMORROW TODAY**  
BUILDING SCHOOLS FOR THE  
FUTURE (BSF) AIMS TO CREATE  
A 21ST CENTURY EDUCATIONAL  
ENVIRONMENT FOR EVERY CHILD  
IN THE UK BY 2021. SCHOOLS WILL  
BE REBUILT OR REFURBISHED TO  
CREATE LEARNING LOCATIONS  
THAT TEACHERS WANT TO WORK  
IN AND PUPILS WANT TO LEARN IN.



BUILDING FOR TOMORROW

# TODAY



## **the facts:** the washroom environment

- Building Schools for the future will ultimately ‘see the entire secondary school building stock upgraded or refurbished in the greatest school renewal programme in British history’.
- Functionality, build quality and community impact are the key design criteria of the Building Schools for the Future programme.





**the facts: the washroom environment**

– Phase One of BSF is already underway, around 200 schools will share £2.1 Billion in funds for infrastructure improvement.

*Hand-washing facilities, visible from outside the washroom, are an elegant way to reduce anti-social behaviour in school toilet areas.*

- S2570**  
Cherwell 42cm vanity basin.

**A4183AA**  
Sensorflow 21 wall mounted 23cm tubular spout with separate sensor – 1 mains spout.

**A4184AA**  
Sensorflow 21 wall mounted 23cm tubular spout with separate sensor – 3 link spouts. Separate thermostat supplies safe hot water.

**S8722AA**  
Metal slotted strainer waste.

**S8920AA**  
Bottle trap.

*(products listed above, see opposite page).*

**K3101**  
Tonic wall hung WC pan.

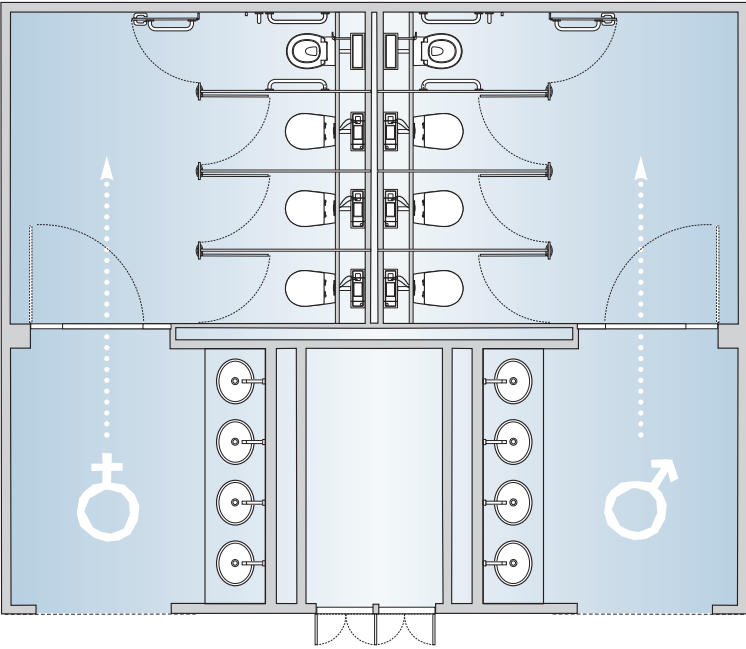
**E0060**  
WC support brackets.

**K7061**  
Slow close seat.

**S4399AA**  
Dual flushing plate.

*(products listed above, see right).*

For complete technical information please call 0870 122 8822



**SECONDARY, AGES 11+**  
MOVING TO A 'GROWN UP'  
SECONDARY SCHOOL CAN BE  
A DAUNTING EXPERIENCE FOR  
ANY CHILD. THE TRANSITION  
CAN BE HELPED BY THE  
ATTRACTIVE, SIMPLE AND  
CLEAN TOILET FACILITIES  
THAT ARE NOW WITHIN THE  
REACH OF ALL SCHOOLS,  
WHATEVER THE BUDGET.



**the facts: the washroom environment**

- Poor sanitary conditions and fear of bullying cause pupils to avoid washrooms.
- Good washroom design will improve pupil health, discipline and achievement.
- The presence of learning opportunities and concern for student welfare can be sub-consciously 'read' in the amenities of a school, not just the classroom.

11+





*An easily visible communal hand-washing area reduces the overall space needed for a toilet block and allows staff to passively supervise the washroom.*

**R4123**  
Washpoint 50cm undercounter basin.

**A4171AA**  
Sensorflow 21 countertop spout with built in sensor.

**S8722AA**  
Metal slotted strainer waste.

**S8920AA**  
Bottle trap.

*For additional products in this washroom see p14.*



**the facts: defra**

- Any school will benefit from improved water-saving and lower utility bills.
- By selecting sanitaryware products from the Water Technology List (WTL) your design could contribute to potential water savings of up to 50% per annum.







the facts: water-saving

- The Environmental Agency believes that most schools can easily reduce water consumption, and their water bills by up to 50% by selecting sanitaryware from the Water Technology List (WTL).
- Taps, urinals and WCs can all be optimised for water efficiency.



Floor to ceiling cubicle partitions and minimal floor and ceiling to door gaps help maximise child safety and privacy.

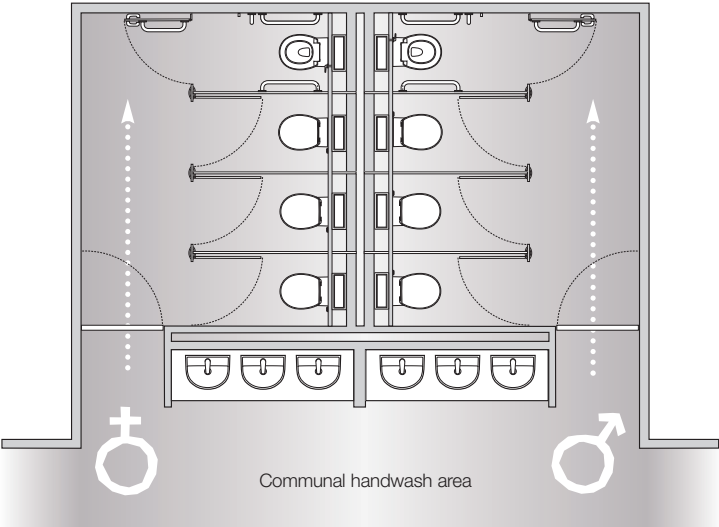
- S3058  
Contour 21 rimless wall hung WC – standard projection.
- S913967  
WC support brackets.
- S4065  
Contour 21 WC seat and cover – top fixing hinges.
- S364267  
Concealed cistern – 4.5ltr flush.  
*(products listed above, see opposite).*
- S6110  
Contour urinal.
- S9275  
Concealed steel hangers.
- S6286  
Back inlet spreader.
- S8850  
Plastic domed waste.
- S8115AA  
Panel mounted urinal sensor.
- S621567  
Concealed cistern – 4.5ltr flush.  
*(products listed above, see right).*

11+

For complete technical information please call 0870 122 8822



Using a trough urinal can be mortifying for teenage boys. Putting individual urinals in cubicles will provide maximum privacy. And it's a water efficient alternative to using a WC as a urinal.







*Bullying and property damage can occur when pupils socialise in washroom areas. This can be reduced by constraining the 'private' cubicle area in size and providing a smaller 'public' washbasin area.*

**S2509**  
Sandringham  
50cm countertop  
basin.

**B8267AA**  
Avon 21 self closing  
basin pillar taps.

**S8722AA**  
Metal slotted  
strainer waste.

**S8920AA**  
Bottle trap.

*For additional products  
in this range see p18.*



**the facts: durability, hygiene and maintenance**

– Many users believe hygiene is more important on the way out of a washroom after using the facilities. The solution is a 'one-way, doorless' washroom that minimises the use of hands to exit.





the facts: the washroom environment

– By locating the washroom within the heart of the school, a message is sent that appropriate standards of behaviour still apply.



- S6100 Sanura urinal.
- S9275 Concealed steel hangers.
- S6285 Top inlet spreader.
- S8850 Plastic domed waste.
- S8915 1½" plastic bottle trap.
- S6222MY Exposed flush pipes for 3 urinals.
- S6202 Mura 13.6ltr auto cistern.

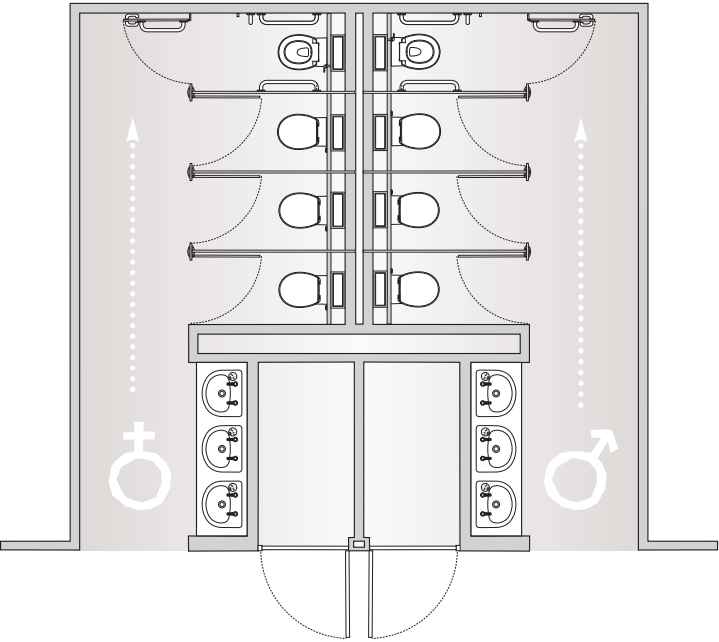
- S3056 Contour 21 standard height rimless back-to-wall WC – standard projection.
- S4065 Contour 21 WC seat and cover – top fixing hinges.
- S364267 Concealed cistern – 4.5ltr flush.

- S4512MY Pneumatic finger push button.

(products listed above, see left).

- S6120 Division with hangers.
- (products listed above, see opposite).

11+



For complete technical information please call 0870 122 8822



**PRIMARY, AGES 7 – 11**  
AS THE SPEED AT WHICH  
CHILDREN GROW UP  
ACCELERATES A MATURE  
APPROACH IS REQUIRED  
EVEN FOR THE UNDER 12s.  
A MORE VIBRANT COLOUR  
PALETTE WILL COMMUNICATE  
THE SCHOOLS AWARENESS  
OF THEIR PUPILS' IMMINENT  
YOUNG ADULthood.



S2157  
Portman 21  
1 taphole basin  
with overflow.



**the facts: water-saving**

- Certification denotes an environmentally efficient solution for the client.
- Saving water is good public relations as establishing a 'green identity' becomes increasingly important to many Local Education Authorities.

7-11





- S2310**  
Portman 21 50cm basin with overflow, no chain hole.
  - E015767**  
Wall fixing kit.
  - B8267AA**  
Avon 21 self closing pillar taps.
  - S8720AA**  
Metal strainer waste.
  - S8920**  
Plastic bottle trap.
  - S3047**  
Contour 21 schools 355mm high back-to-wall pan.
  - S4059**  
Contour 21 WC seat.
  - S425967**  
Concealed cistern with lever – 4.5ltr flush.
- For additional products in this range see p24.*



**the facts: durability, hygiene and maintenance**

- Materials can be selected based on each schools needs.
- Pupils are happiest using clean and well maintained washrooms.



**the facts:** it is important to save water

- The UK has less water available per person than any other EU country, with the exception of Belgium and Cyprus. London is ‘drier’ than Istanbul and the south east has less water available per capita than the Sudan.



**S3047**  
Contour 21 schools  
355mm high  
back-to-wall pan.

**S4058**  
Contour 21 WC seat  
and cover.

**S4399**  
Dual flush plate.

**S362467**  
Concealed cistern  
– 6.4ltr flush.

Coloured seats  
with no cover;

**S405936**  
Blue seat.

**S4059GQ**  
Red seat.

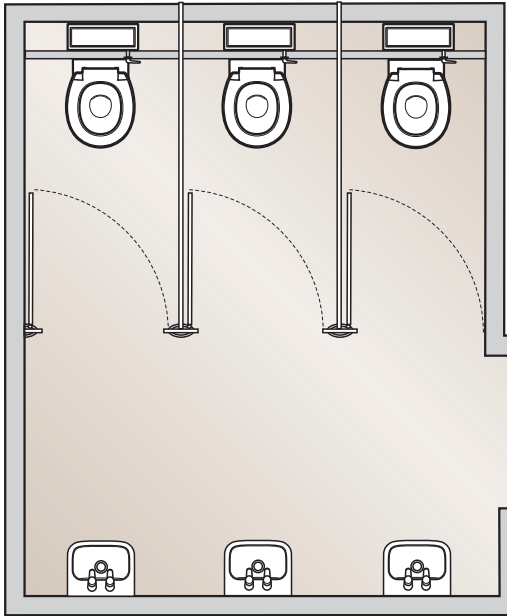
**S405966**  
Black seat.

*(products listed above,  
see opposite).*

**S54442**  
Purita drinking fountain  
with pedestal.

*(products listed  
above, see left).*

7-11



*Proper hydration directly relates to pupil health and performance. Drinking fountains should be located away from washroom areas for hygiene reasons.*

For complete technical  
information please call  
0870 122 8822



**PRIMARY, AGES 3–6**  
BRIGHT AND FRIENDLY  
COLOURS WILL HELP  
MAKE A YOUNG CHILD'S  
FIRST IMPRESSION OF THEIR  
FIRST SCHOOL TOILETS A  
POSITIVE ONE. THIS WELCOMING  
AESTHETIC IS SUPPORTED  
BY ATTRACTIVE CONTOUR 21  
SANITARYWARE WITH  
CHILD-SAFE PROFILES.



#### the facts: water-saving

- Many of the products shown in this brochure fall within the Bathroom Manufacturers Association (BMA) labelling scheme. The aim of the scheme is to help you easily identify water efficient products that when installed and used correctly use less water than other products available on the market.

# 3-6





- S2313**  
Portman 21 40cm basin with overflow and no chain hole.
- E015767**  
Wall fixing kit.
- B8262**  
Nuastyle 21 basin pillar taps.
- S8722AA**  
Metal slotted strainer waste.
- S8900**  
Chrome bottle trap.
- S3046**  
Contour 21 schools 305mm high back-to-wall pan.
- S4056**  
Contour 21 small seat and cover.
- S425967**  
Concealed cistern with lever – 4.5ltr flush.



**the facts: durability, hygiene and maintenance**

– Safety may be the number one concern with children, but cleanliness is still very important to them.





the facts: water-saving

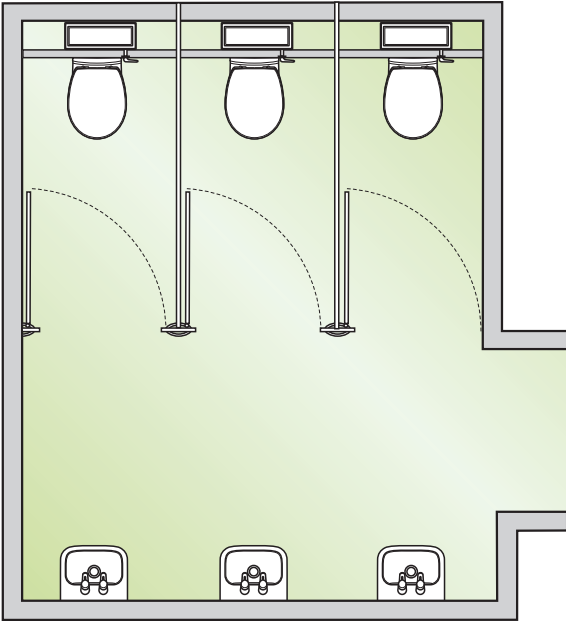
– Within the BREEAM programme a section is devoted to schools clearly outlining the steps necessary to obtain compliance and the highest points ranking.



- S2313**  
Portman 21 40cm basin with overflow and no chain hole.
- E015767**  
Wall fixing kit.
- B8262**  
Nuastyle 21 basin pillar taps.
- S8722AA**  
Metal slotted strainer waste.
- S8900**  
Chrome bottle trap.

- S3046**  
Contour 21 schools 305mm high back-to-wall pan.
- S3064**  
Close coupled cistern with 4/6 ltr push button flush
- S4056**  
Contour 21 small seat and cover.

3-6



For complete technical information please call 0870 122 8822



# holy trinity primary school

in a recent armitage shanks survey of 30,000 schools, 70% said their toilet blocks were installed more than 20 years ago and half rated their toilets as being in ‘very poor condition’.

Situated in the Saville Park area of Halifax, Holy Trinity Primary School has 400 pupils, of many ethnic backgrounds, aged between three and eleven years old. The school recently received an outstanding Ofsted report and, while achieving great results with all pupils, is at the forefront of a national programme to cater for the needs of gifted children...



Holy Trinity Primary School





holy trinity primary school (continued)

According to the January 2008 Ofsted report, Holy Trinity Primary School is a modest school, with very little to be modest about. The inspector found that the schools assessment of its own performance was 'occasionally rather modest'. Out of 27 inspected categories Holy Trinity achieved the highest grade, 'outstanding', in 25 of them. The remaining two categories were merely 'good', the second highest grade.

An impressive performance for any school, let alone one which burnt to the ground in 2003.

Between the fire and the opening of the new school buildings in September 2007, the 400 pupils of Holy Trinity received their education in temporary classrooms staffed by a dedicated group of teachers and support personnel. During this challenging time,

The school wanted to ensure that their new toilets fully contributed to the education and well being of the pupils.



Out of 27 inspected categories Holy Trinity achieved the highest grade, 'outstanding' in 25 of them.

Head Teacher Roger Bateman strove to ensure the re-built school would 'have the highest quality facilities and the resources necessary to inspire the pupils and ensure they develop and thrive'. Mr Bateman readily acknowledges that the opportunity to develop a model primary school was only possible due to the forbearance of the pupils, the 'above and beyond the call' work of his staff and the support of the board of governors. The end result of their combined efforts is a facility that more than justifies the £6 million spent on it. Set within a landscaped play area with the Union flag flying proudly, the new Holy Trinity looks more like the corporate headquarters of a multinational business than a typical local primary school. The façade is mirrored on the inside by large, open and bright classrooms and a state of the art Information & Communication Technology suite. These areas easily achieve the buildings design objective of enabling the pupils to learn 'together in harmony and enjoy all aspects of their education'.

The design and provision of new toilets was also of prime importance to the project, the school wanted to ensure that their new toilets fully contributed to the education and well being of the pupils. A series of toilet schemes were implemented, each designed to cater for a relatively small number of children within a discrete age group. All washrooms are located close to a classroom and have a yellow theme with wall panels colour coded to match the decorative finishes of the users year group room. Proportions were also considered, the heights of cubicles and basins tailored to the age of the child using it, a simple consideration but one often overlooked. Armitage Shanks were proud to supply a range of products to the new Holy Trinity washrooms and play a small part in getting this exceptional school back on line.

The Head Teacher sums it up best, 'A collection of small, friendly facilities right next to our classrooms gives pupils easy access and staff easy supervision. The children love the new toilets and that shows in the way they treat them. Money very well spent.'





### **the facts:** school showers

- An economical shower flow rate of 9 litres per minute can be achieved in mains pressure or pumped systems by using flow-modifying devices to introduce air or create finer water drops.

#### **S9313**

Short projection shower head.

#### **B8265AA**

Contour 21 built-in push button shower mixer.

Separate thermostat supplies safe hot water (thermostat not supplied).

# SHOWERS

MANAGING USER BEHAVIOUR AND FLOW RATE IS THE KEY TO AN EFFECTIVE AND ECONOMICAL SCHOOL SHOWER.



**A4185AA**  
Sensorflow 21 built in  
electronic shower valve  
and sensor.

**S7851**  
Kirn stainless steel  
shower panel with self  
closing push button  
valve and anti-vandal  
shower head.

**B8266AA**  
Contour 21 built in  
push shower valve,  
non-mixing.

**B8264AA**  
Contour 21 push button  
shower mixer with top  
water outlet.

*(products listed above,  
see right, clockwise).*



▶ **the facts: part m**

- Anyone who is permanently, or temporarily, disabled is now within the remit of Part M. Around 77,000 children in the UK are disabled. Only around 50% of schools have accessibility plans.

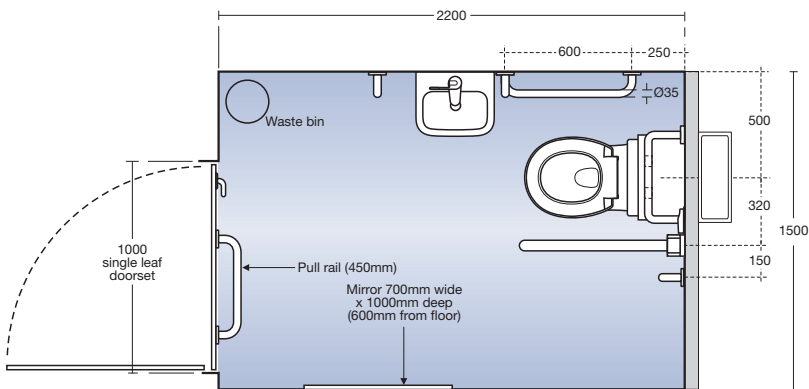
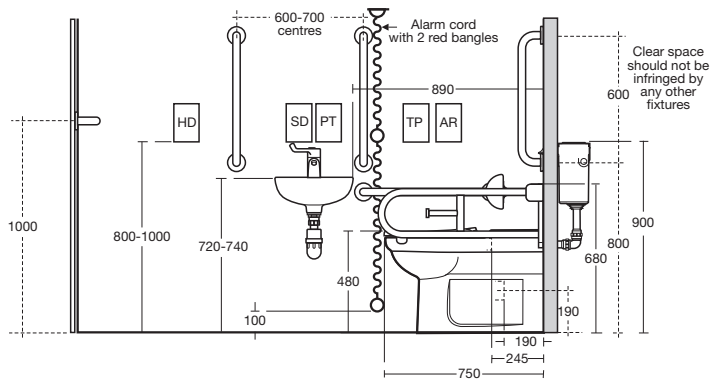


# PART M

DESIGN THAT CATERS FOR DISABLED CHILDREN AND STAFF  
IS ADDRESSED BY PART M OF THE BUILDING REGULATIONS.

concealed doc m pack  
contour 21 back-to-wall WC

For complete technical  
information please call  
0870 122 8822



pack product codes

back-to-wall wc  
concealed doc m pack

- **S6954AC**  
White with white rails and seat.
- **S6954LI**  
White with blue rails and seat.
- **S6954MY**  
White with stainless steel rails  
and grey seat.

Water saving Doc M Pack  
that only needs 4.5 litres  
of water to flush.

Wall basin without overflow  
for additional hygiene.

Thermostatic Sequential  
Mixer. TMV3 approved to  
prevent scalding.

Thermostat is within mixer  
(not separate as with other  
suppliers). This cuts down  
risk of legionella bacteria  
forming between separate  
thermostat and mixer.

Easy operation handle.

Raised height WC set at  
480mm for wheelchair  
height access.

Concealed cistern  
provides hygiene and  
access benefits.

WC back support cushion  
for improved comfort.

Toilet-roll holder.

Concealed fixing grab  
rails tested to 200kg.

Hinged support arm  
tested to 200kg.

Available with white  
or blue rails and seat  
or with stainless steel  
rails and grey seat.

LANTAC approved.





## THE FACTS

THE OBJECTIVE OF EACH ESSENTIAL SPECIFIERS SERIES GUIDE IS TO SIMPLIFY THE PROCESS OF MATCHING PRODUCT TO PROJECT. THE NEXT FEW PAGES REVIEW SOME OF THE KEY ISSUES TO BE CONSIDERED IN SCHOOL WASHROOM DESIGN.

- Achieving water efficiency (44)
- The water technology list (45)
- Enhanced capital allowance (45)
- Water efficiency (45)
- BREEAM (45)
- The Bog Standard campaign (46)
- The washroom environment (46)
- Hygiene (47)
- Durability & maintenance (47)

# THE FACTS

**Q: how can a school washroom be made water efficient, child friendly and safe, and help to improve discipline and academic achievement.**

**A: the following checklist illustrates how product selection and compliance with best practice and environmental guidelines can benefit your client.**

**1. achieving water efficiency** ✓

Armitage Shanks have developed a range of water saving products that will help to optimise water economy and efficiency.

Water efficient product

**WCs**

Contour 21 Back-to-wall WCs (305mm and 355mm) flush on 4.5 litres of water instead of the standard 6 litres.

**taps & mixers**

Contour 21, Sensorflow 21 and Avon 21 taps and mixers are supplied with an optional 5 litres/minute laminar flow water regulator.

**urinals**

Timed automatic cisterns provide urinal flushing only during the school day. Sensorflow user detection ensures a urinal is only flushed when it has been used. Aridian waterless urinals do not require flushing, they are the ultimate water saving urinal.

**2. the water technology list** ✓

In March 2001 the Chancellor announced support for organisations that invest in environmentally friendly technologies. Key to this new policy was the introduction of the Water Technology List (WTL) of water efficient products. The Water Technology List was published in 2003 following lengthy consultation between

the Department for Environment, Food and Rural Affairs (DEFRA) and HM Revenue & Customs. Available on the web ([www.eca-water.gov.uk](http://www.eca-water.gov.uk)) and updated monthly, the WTL describes both the products and practices that DEFRA believe will make a positive impact on water saving within any organisation.



**WTL products will make a positive impact.**

**3. enhanced capital allowance** ✓

The Enhanced Capital Allowance (ECA) scheme works in conjunction with the Water Technology List. Any commercial operation that pays UK corporation tax can claim 100% first year capital allowances on investments in water efficient products chosen from the WTL. Local Education Authority Schools are typically not profit making

organisations and as a result they are not able to claim tax relief under the ECA. However, schools that are run as a Trust and undertake fundraising trading activities may be able to gain tax relief on any profits made. Similarly, any school that is run as a Charity is liable for corporation tax and may also receive tax relief on any profitable activity.

**Any school that is run as a charity may receive tax relief on any profitable activity.**



**4. water efficiency** ✓

The Environment Agency believes that most schools can easily reduce water consumption, and their water bills, by around 50%.

**Urinals:** Flushing urinals account for 20% of water usage in school toilets. Recent developments in waterless urinal technology can reduce this figure to virtually zero.

**Taps:** Almost 33% of the water used in schools comes out of washroom taps. Simply fitting a tap with a flow limiter will reduce this figure by 80%.

**WCs:** Dual flush cisterns can easily save water in school washrooms. Correct usage and maintenance are important to realise the water-saving benefits of this technology.

**The Environment Agency believes that most schools can easily reduce their water consumption by around 50%.**

**5. breeam** ✓

The Building Research Establishment promotes an Environmental Assessment Method (BREEAM) as a way to judge the environmental friendliness of buildings. It 'sets the standard for best practice in sustainable development' and measures a buildings level of achievement. Within the BREEAM programme a section devoted to schools clearly outlines the steps necessary to

achieve compliance and the highest points ranking. The benefits of a BREEAM building extend to both designer and client. The client receives a building that supports its environmental strategy, while the designer can clearly demonstrate compliance with environmental requirements and has the satisfaction of working to a formalised best practice.

**Over 65,000 buildings in the UK have already achieved BREEAM certification.**

\*Not applicable in Republic of Ireland.





## 6. the bog standard campaign ✓

Launched in 2004 by Education and Resources for Improving Childhood Continence (ERIC), in partnership with Schools Council UK and backed by Westminster, the Bog Standard campaign aims to improve standards in school toilets throughout the UK and ensure children have access to them when they need them.

**Armitage Shanks has been a key supplier to schools since 1910 and is the main campaign sponsor.**

The only current legal obligation regarding school washrooms concerns the number of sanitary items required. The campaign is working to change this by promoting vastly improved standards, enforced by legislation, that will ensure school toilets are age appropriate, always available, cleaned and well maintained.



## 8. hygiene ✓

As a species we adopt rituals in order to deal with many aspects of life, and this is true in the washroom. Almost all users have their own washroom rituals aimed at avoiding physical contact with surfaces. Children are no different.

**Flushing a 'lidless' WC atomises bacteria and they become airborne.**

A modern school washroom should not just rely on a cleaning regime for its hygiene performance. Room design and product selection play a key role. In the instance above, specifying a seat with a lid and vandal resistant steel hinge is a simple way to significantly improve the hygiene of the school toilet.



## 7. the washroom environment ✓

For a child, visiting a school toilet can be an intimidating experience. Broken facilities, fear of bullying or restriction of use can cause health problems, the lack of privacy can lead to phobias that may follow children into adult life.

Exemplar design schemes currently being prepared as part of the 'Building Schools for the Future' programme provide guidance on how child-friendly school toilets may be achieved.

Locating washrooms within the heart of the school sends a message that appropriate standards of behaviour still apply. Within the toilet the maintenance of clear sight lines and an open plan design approach will promote an atmosphere of natural peer-to-peer surveillance and protection.



## 9. durability & maintenance ✓

Vitreous china is the logical washroom material choice as it can be cast into attractive shapes, is easy to clean and will withstand constant use.

In schools that require extra toughness stainless steel should be considered. This hardwearing material is virtually indestructible in normal use.

**Cleaning and maintenance costs have a significant impact on life costs.**

Fitting a wall hung WC will facilitate faster more effective cleaning. Sanitaryware that has 'cleaning friendly' designs can be more expensive to manufacture and this is reflected in their price. The specifier may have to explain the long-term value for money.

The cable actuated pop-up basin waste demonstrates that ease of maintenance can be built in to the specification. Actuated by a durable alloy cable that does not work loose and never requires adjustment, it won't go missing and it will always work.



guarantee

lifetime  
all ceramic products

5 years  
on taps and mixers, toilet seats  
and cistern fittings

Our confidence in the quality and reliability of our product allows us to offer outstanding extended guarantees on all our products – where the product fails within 5/25 years/lifetime we offer a free replacement or replacement part (or nearest equivalent). So when your washroom has been satisfactorily installed and is working well, please ensure you register your guarantee.

This guarantee is transferable – it applies to the product not the purchaser provided the guarantee registration is passed on to the new owner.

Liability is limited to individual products and the guarantee does not cover the consequential loss or damage or installation costs. This guarantee does not affect your statutory rights. Products must be installed, used and cared for in line with our fixing instructions and local water regulations, and rooms must be adequately ventilated.

Parts (eg. flushvalves) are guaranteed for five years and will be replaced if found to be faulty. The guarantee does not cover general wear and tear.

Applies to UK and Republic of Ireland only.

You can register for guarantees on a bathroom bought on your behalf by a plumber or builder.

Colours printed in this book are as near as possible to the manufactured range of Armitage Shanks quality bathrooms. For accurate comparisons of colours, see actual ware on display at Armitage Shanks retailers. Our policy is one of continuous improvement and we reserve the right to change specification and design at any time without notice.

All measurements are approximate. Products can be subject to tolerances due to manufacturing processes.

**Additional Resources**  
Further information about the Disability Discrimination Act is available from the following organisations.

**Department for Work & Pensions**  
[www.dwp.gov.uk](http://www.dwp.gov.uk)

**Disability Rights Commission**  
[www.drc-gb.org](http://www.drc-gb.org)

**Direct Gov**  
[www.direct.gov.uk](http://www.direct.gov.uk)

technical helpline  
0870 122 8822



CREDITS

p12–13  
Floor tiles EA6507Satin 300 x 600mm  
Wall tiles EGC7012STR 300 x 300mm

p14–15  
Floor tiles EA6507Satin 300 x 600mm

p16–17  
Floor tiles BAVPN00 300 x 600mm  
Wall tiles BAVPN00 300 x 300mm

p18  
Floor tiles BAVPN00 300 x 600mm

p20  
Floor tiles APB6238 600 x 600mm  
Wall tiles TM4314 25 x 25mm  
Wall tile band TM4313 25 x 25mm

p22–23  
Floor tiles APB6238 600 x 600mm  
Wall tiles TM4314 25 x 25mm  
Wall tile band TM4313 25 x 25mm

p 27, 29–30  
Wall tiles TM4313 25 x 25mm



All tiles supplied by

**Grestec Tiles Limited**  
Unit 4 Stonestile Business Park  
Stonestile Road  
Headcorn  
Kent  
TN27 9PG

Tel 0845 130 2241  
Fax 0845 130 2242  
Email [mail@grestec.co.uk](mailto:mail@grestec.co.uk)  
Web [www.grestec.co.uk](http://www.grestec.co.uk)



For further information  
on any of our products

please call  
**0870 122 8822**

or visit  
[www.thebluebook.co.uk](http://www.thebluebook.co.uk)



The bluebook has long been the most comprehensive guide to bathroom and washroom products. Now the bluebook DVD provides an interactive version allowing you to navigate through more than 1250 pages of detailed drawings and specifications instantly. Once installed on your hard drive blue book can be automatically updated with the latest product information every time you go online.

A division of Ideal Standard (UK) Ltd.

© Armitage Shanks  
P1239 07/08

