

Armitage Shanks
Armitage
Rugeley
Staffordshire
WS15 4BT

Armitage Shanks
M50 Business Park
Ballymount
Dublin 12
Ireland

Tel 01543 490253
Fax 01543 491677

Tel + (353) 01 456 4525
Fax + (353) 01 456 4505

www.thebluebook.co.uk

*Armitage
Shanks*

the new hygeniq urinal

for cleaner, healthier washrooms

*Armitage
Shanks*



the essential specifiers series

If you would like to request the
Hospital, Brassware, School, Offices
or Part M brochures from our
'Essential Specifiers Series',

call 0800 590311



 **hygeniq**

the problem

is that you can't see the problem

With conventional urinals, the splash-back of urine is an unavoidable fact and a serious problem. Basic physics, in particular the rules of impulse and momentum, dictates that when a jet of fluid hits a flat vertical surface at 90 degrees, some of the fluid will rebound as splash. Where does this splash-back land? On the floor, the walls, clothing and other people.


And that, obviously, is a problem.

The effects are largely unseen. Harmful bacteria thrive in the smelly urine splashed on the walls and floor and can spread germs and potentially disease to those using the washroom.

As the urine settles on the washroom surfaces its corrosive effects can easily be seen. Unsightly staining and deterioration of the surrounding décor occurs. Urine eats into the grout between ceramic tiles, creating small fissures which gradually degrade the joint. Grout can harbour fungi that release spores which harm the respiratory system.

Splashed clothing can also transport germs outside the washroom. This is not only unhygienic, it's personally unpleasant too and has the potential of spreading germs to the wider public.


An improved cleaning regime can be expensive and will only ever treat the symptoms of the problem; what is needed is a cure for the problem itself.



**A single bacterium
can multiply to become
8 million cells
in 24 hours**

**Millions of germs find a home in
splashed urine around the urinal**

**Bacteria grow
and divide
every 20 minutes**



**A washroom floor is a breeding ground for germs
and may carry up to 462 bacteria per square inch**

**A typical floor tile may have 65,000
living bacteria on its splashed surface**

an expert's view

leading microbiologist, Dr. Ron Cutler gives us the facts on urine surface contamination

Apart from problems associated with the odorous contamination of surfaces, urine coated surfaces can potentially act as microbial fomites.

Fomites consist of both porous and non-porous surfaces or objects that can become contaminated with pathogenic microorganisms and serve as vehicles in transmission. During and after illness, viruses for example are shed in large numbers in body secretions, including blood, faeces, saliva, nasal fluid and of course urine.

Although urine is normally sterile it can act as a source of infection in three ways

- Urine is an excellent growth medium for bacteria and if a surface is coated with dried and liquid urine it could provide a potential source of infection for hands if they touch these contaminated surfaces
- Viruses can be present in infected urine and can survive on urine contaminated surfaces
- If an individual has a urinary tract or bladder infection surfaces coated with any of these organisms could also act as a source of infection

Doctor Ronald R. Cutler PhD

*Deputy Director of Biomedical Science, Pre-Clinical Drug Discovery Group
School of Biological and Chemical Sciences, Queen Mary University of London*

the objective

fitting form to function; a fresh look at urinal design

Most men are unaware of splash from urinals. However, of those who are, some try to reduce splash-back by urinating towards the outward-curving edge of the bowl so that the flow strikes at a lesser angle.

Whilst this can be an effective means of reducing splashing, it requires the users to stand off-centre and effectively 'misuse' the urinal. This reduces the effective aim area and increases the chance of missing which in turn exacerbates the problem.

Clearly, there is a need for an improved 'anti-splash' urinal design which offers vastly superior hygiene performance and a reduction in the costs of maintenance.

Recognising this problem, Armitage Shanks teamed up with industrial designers Goodwin Hartshorn to discuss exactly that; a solution that significantly reduces splash-back whilst requiring no special technique to use or install. Furthermore, the new design can easily be incorporated into Armitage Shanks' market leading Contour and Sanura urinal ranges.

Designed using principals of advanced fluid dynamics and independently tested and proven to work, the next stage in the evolution of the urinal is the 'Fin'.



the solution

the ‘Fin’ - a breakthrough
in washroom hygiene

 **hygienIQ**

healthier washrooms by design

The new hygienIQ urinals have a central, vertical and rearward-splaying ‘Fin’ cast within the bowl itself. Standing centrally in front of the urinal, with a large aiming area, the user’s flow will hit either side of the ‘Fin’ at a very shallow angle. There will be little or no splashing because, at such an angle, surface tension will cause the fluid to ‘cling’ to the inside of the urinal bowl. Any splashing that does occur will actually travel away from the direction of flow and the user.



how the ‘Fin’ works

The market leading Contour and Sanura urinals have been re-designed to incorporate the new hygienIQ ‘Fin’ and given a sleeker look whilst maintaining the basic shape in order to make retro-fit an easy option. Inside the bowl itself, everything is different. A central ‘Fin’ minimises splashing of urine and directs any that does occur back into the bowl.





allowing an important functional
requirement to inspire a new form

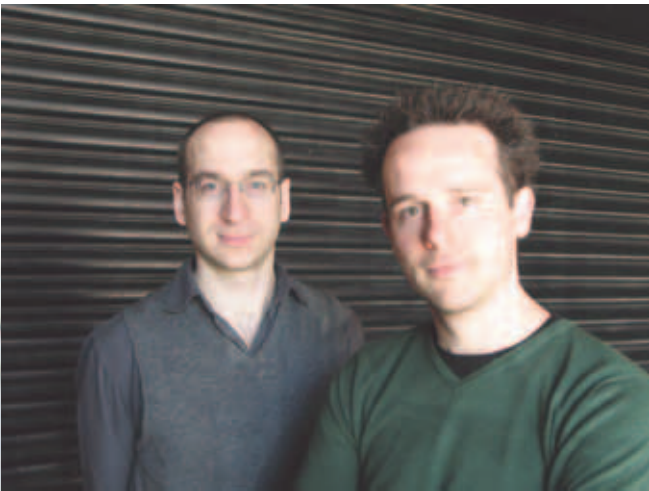
Armitage Shanks have a reputation for industrial designs that seamlessly integrate form and function. The new hygenIQ urinals perfectly demonstrate this approach. By identifying an opportunity to improve the functionality of the traditional urinal, they have produced a modern form that will add value to any washroom.



conceived
by an acclaimed
design team...

Goodwin Hartshorn

After graduating with degrees in engineering and studying industrial design at the Royal College of Art, Edward Goodwin and Richard Hartshorn founded their eponymous practice in London during 2002. Working for an international client base, they specialise in creating products which satisfy the fundamental needs of real-world users. In their own words the new hygenIQ urinals “have a unique selling point and a distinctive form with rational roots”.



“The novel design of the hygenIQ urinal shows that the spread of fluids from the surfaces surrounding the urinal is significantly reduced. Reducing the contamination of surfaces by urine will reduce the potential for any contaminated urine to act as fomites or source of infection.”

*Doctor Ronald R. Cutler PhD,
Deputy Director of Biomedical Science,
Queen Mary University of London.*

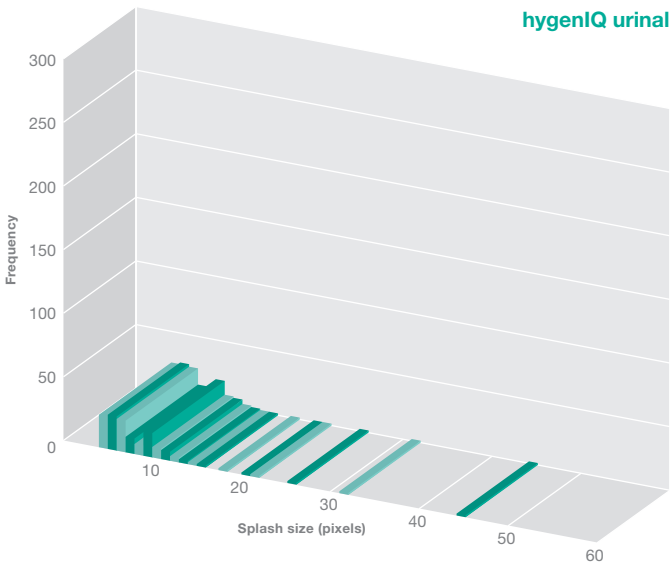
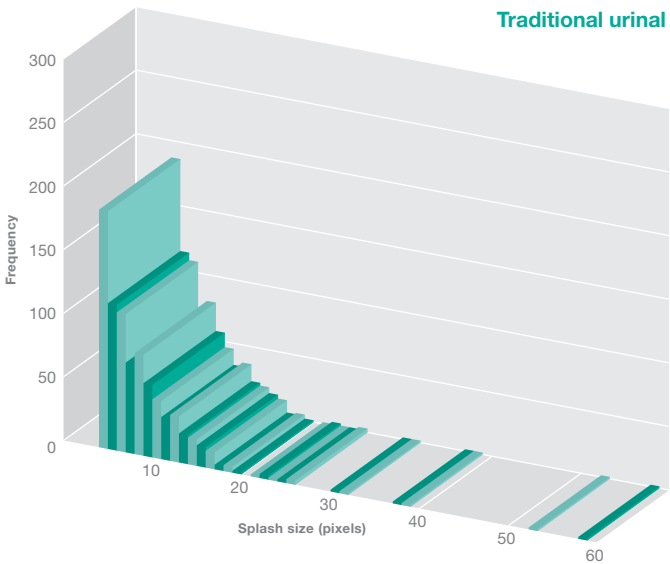
and proven
at a renowned
seat of learning...



 **UNIVERSITY OF Hull**

Goodwin Hartshorn’s ‘Fin’ urinal design was independently tested by the University of Hull to ensure it fulfilled its primary objective. Under controlled conditions in the university’s laboratories, jets of fluid were repeatedly directed into the new urinal bowl from different directions at varying pressures. Fixed cameras photographed the splash pattern and the captured images were digitally plotted.

When compared to the plots of traditional urinals, the splash pattern relating to the hygenIQ urinal was astounding; the unique design of the new hygenIQ urinals reduced splash-back by up to 90% compared to standard urinals.



simple installation, easy retrofit

The unique design and performance of the hygenIQ urinals does not need special techniques or equipment to install. Contour hygenIQ and Sanura hygenIQ are as simple and fast to fit as standard Contour and Sanura.

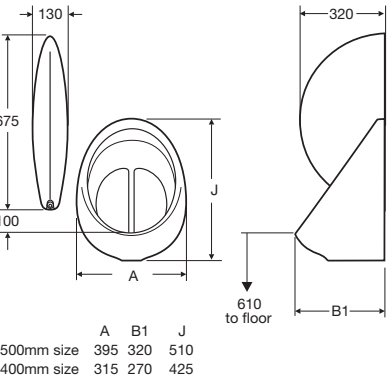
Contour hygenIQ is designed for use on ducted installations where all flush and waste services are hidden. Sanura hygenIQ is suitable for exposed pipework installations and is available in two sizes.

The hygenIQ urinals have been designed to make retro-fitting them in existing Contour and Sanura installations easy and economical. Both new hygenIQ urinals share the same flush, waste and bracket locations as the standard version making their connection to services fast and simple.

Refinishing of the washroom wall tiles or panelling is not necessary when Contour and Sanura hygenIQ replace their respective predecessors. A slightly larger footprint ensures that the new urinals cover such things as previous silicone sealant or cut tile edges.

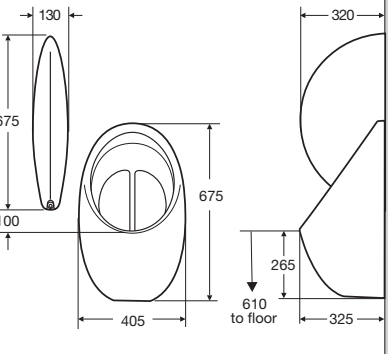


hygenIQ Sanura Urinal



Urinals for junior use should be set at 510mm from floor to lip of bowl

hygenIQ Contour Urinal



Urinals for junior use should be set at 510mm from floor to lip of bowl



Contour and Sanura hygenIQ urinals incorporate a bespoke waste, designed to assist in the reduction of splash-back.

specifying the new hygenIQ urinals

Contour and Sanura hygenIQ urinals are available now and can be specified as individual items or in packs. Each Contour or Sanura hygenIQ urinal pack contains 1 or 2 urinals, one auto cistern, flush pipe set and all necessary spreader, waste and traps.

Armitage Shanks have developed a fin strainer waste that works in tandem with the hygenIQ fin urinals to further reduce splash-back. Available in 1½” BSP with a 50mm unslotted tail.

hygenIQ urinal components

Description	Product code
Contour hygenIQ urinal	S611901
Back inlet spreader	S6286AA
hygenIQ waste	S884967
38 x 75mm seal plastic tubular swivel trap	S897067
Toggle bolts	S927667
Concealed hangers	S927567
Sanura hygenIQ urinal 40cm	S611701
Top inlet spreader	S6285AA
hygenIQ waste	S884967
Concealed hangers	S927567
1½" plastic bottle trap with 75mm seal	S891567
Sanura hygenIQ urinal 50cm	S611801
Top inlet spreader	S6285AA
hygenIQ waste	S884967
Concealed hangers	S927567
1½" plastic bottle trap with 75mm seal	S891567
Other	
Vitreous china division with fixings	S612001

Cisterns

Exposed cisterns (Vitreous china)	Product code
Mura 4.5 ltr	S620001
Mura 9 ltr	S620101
Mura 13.6 ltr	S620201
Concealed cisterns (Plastic)	Product code
Conceala 4.5 ltr	S621567
Conceala 9 ltr	S621667
Conceala 13.6 ltr	S621767

Auto cisterns

No. of urinals	Cistern size
1	4.5 ltr
2	4.5 ltr
3	9 ltr
4	13.6 ltr
5	13.6 ltr

Flush pipes

Exposed pipework	Product code
1 person	S6220MY
2 person	S6221MY
3 person	S6222MY
4 person	S6223MY
5 person	S6224MY
Concealed pipework	Product code
1 person	S6226NU
2 person	S6227NU
3 person	S6228NU
4 person	S6229NU
5 person	S6230NU

hygenIQ urinal packs

Contour hygenIQ 1 urinal pack		Contour hygenIQ 2 urinal pack		Sanura hygenIQ 1 urinal pack		Sanura hygenIQ 2 urinal pack				
Product code S019201		Product code S019301		40cm product code S019601		40cm product code S019701				
				50cm product code S019401		50cm product code S019501				
Pack contents	1 urinal pack	2 urinal pack	Product code			Pack contents	1 urinal pack	2 urinal pack	Product code	
Contour hygenIQ concealed urinal	x1	x2	S611901			Sanura hygenIQ exposed urinal Top inlet spreader hygenIQ waste Concealed steel hangers 1½" plastic bottle trap with 75mm seal Exposed flush pipe Mura cistern 4.5 litre	x1	x2		
Back inlet spreader	x1	x2	S6286AA						40cm	50cm
hygenIQ waste	x1	x2	S884967						S611701	S611801
1½" plastic P trap with 75mm seal	x1	x2	S897001						S6285AA	S6285AA
Toggle bolts to suit 25mm panel thickness	x1	x2 packs	S927667						S884967	S884967
Concealed hangers	x1	x2 packs	S927567						S927567	S927567
Concealed flushpipes for back inlet spreaders	x1	x1	S6226NU						S891567	S891567
Conceala 4.5 litre urinal cistern	x1	x1	S621567						S6220MY	S6220MY
									S620001	S620001

Note: Sanura hygenIQ urinals can be fitted with either a top inlet spreader for exposed

setting the standard in washrooms

Armitage Shanks has a rich history of innovation and a tradition of product development stretching back over 190 years. Investment in research, technology and traditional manufacturing skills has led to breakthrough products such as the rimless wash-down WC, the concealed pipework Contour range and the waterless Aridian urinal.

The new hygenIQ urinals form part of a comprehensive commercial product range that is a 'one stop shop' for the specifier. Armitage Shanks' innovation has helped to define the modern commercial washroom.

 **hygenIQ**

For further information
on any of our products;

please call
0870 122 8822

or visit
www.thebluebook.co.uk



The Bluebook has long been the most comprehensive guide to bathroom and washroom products. For your convenience, an online version of the Bluebook is available by visiting www.thebluebook.co.uk. Here you will find information on over 5000 products including CAD files and installation instructions.

A division of Ideal Standard (UK) Ltd.

© Armitage Shanks
P1325 01/10

guarantee

lifetime

all ceramic products

5 years

on pipes, traps and cistern fittings

Our confidence in the quality and reliability of our product allows us to offer outstanding extended guarantees on all our products - where the product fails within 5/25 years/lifetime we offer a free replacement or replacement part (or nearest equivalent). So when your washroom has been satisfactorily installed and is working well, please ensure you register your guarantee.

This guarantee is transferable – it applies to the product not the purchaser provided the guarantee registration is passed on to the new owner.

Liability is limited to individual products and the guarantee does not cover the consequential loss or damage or installation costs. This guarantee does not affect your statutory rights. Products must be installed, used and cared for in line with our fixing instructions and local water regulations, and room must be adequately ventilated.

Parts (e.g flush valves) are guaranteed for five years and will be replaced if found to be faulty. The guarantee does not cover general wear and tear.

Applies to UK and Republic of Ireland only.

You can register for guarantees on a product bought on your behalf by a plumber or builder.

Colours printed in this book are as near as possible to the manufactured range of Armitage Shanks and Ideal Standard quality products. For accurate comparisons of colours, see actual ware on display at Armitage Shanks and Ideal Standard retailers. Our policy is one of continuous improvement and we reserve the right to change specification and design at any time without notice.

All measurements are in millimetres and are approximate. Products can be subject to tolerances due to manufacturing processes.

technical helpline

0870 122 8822

*Armitage
Shanks*

