

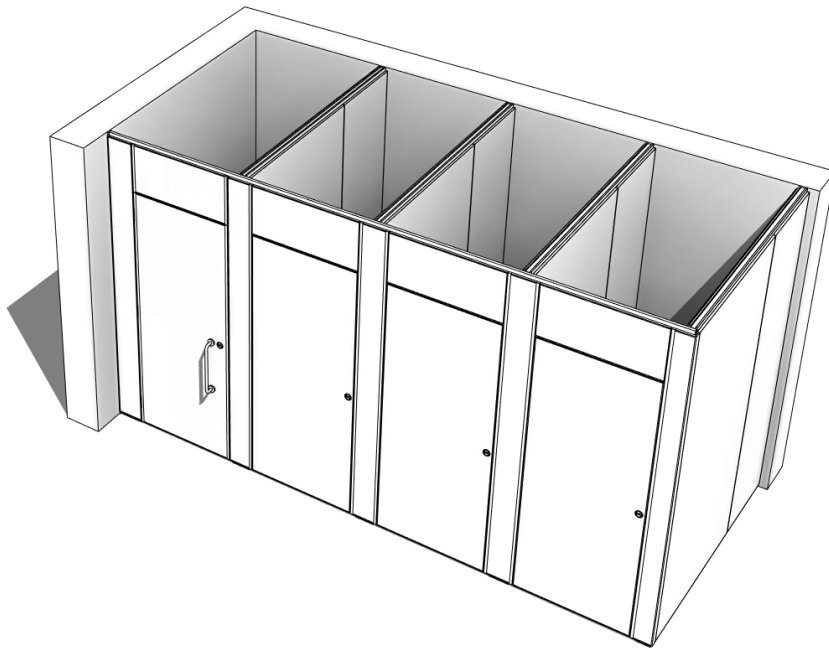
Facade Flush Type C (Non-Emergency Access) The Revolutionary Cubicle



WESTFIELD
WASHROOMS

Facade Flush Type C (Non-Emergency Access)

The Facade Flush Type C (Non-Emergency Access) cubicle system offers specifiers huge choice in terms of layout, dimension, style and material finishes. With decorative, water-resistant, real wood and glass designs, this high end cubicle is finished with carefully engineered door posts, integral pivots and concealed closers.



Features & Benefits

- Our executive range of cubicles
- Huge choice of layout and finishes
- Minimalist design with clean lines

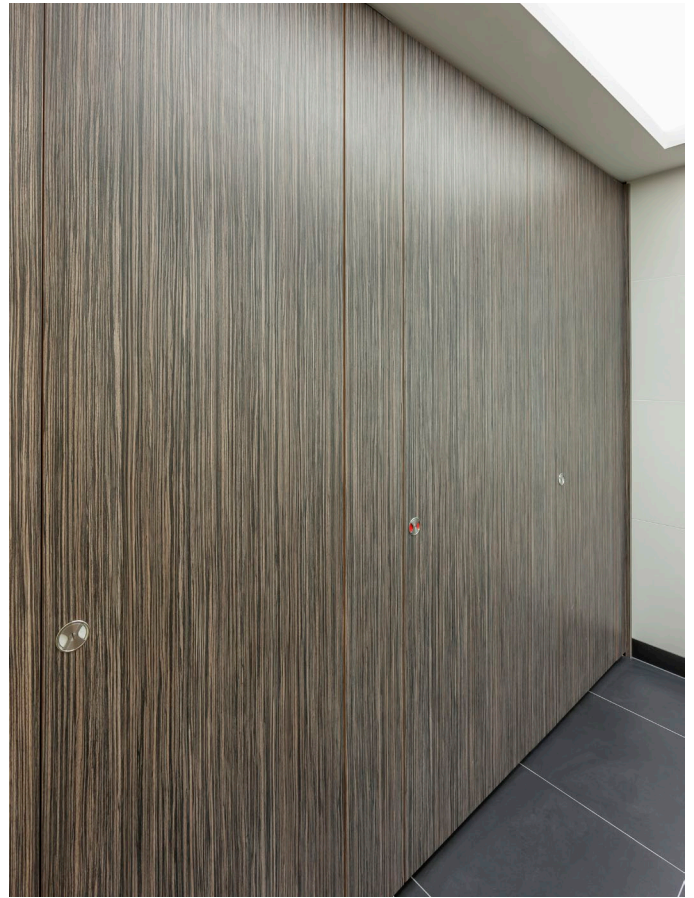
Grant Westfield's Certificates of Achievement



The mark of responsible forestry

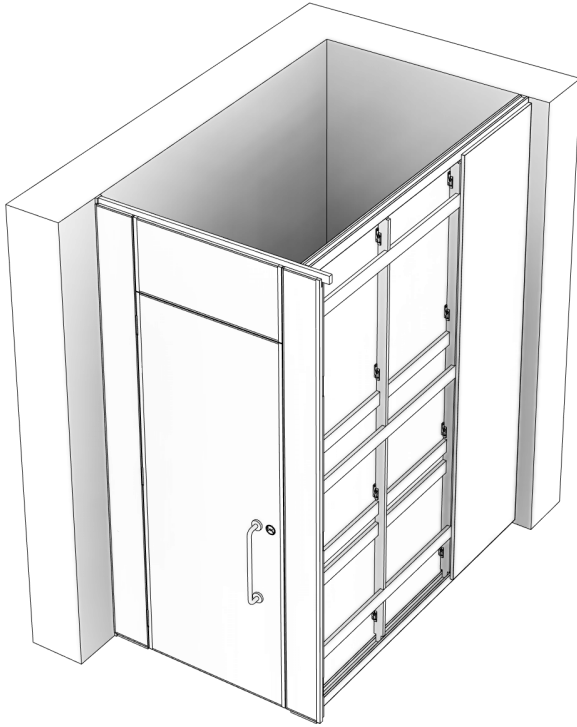


Facade Flush Type C (Non-Emergency Access)



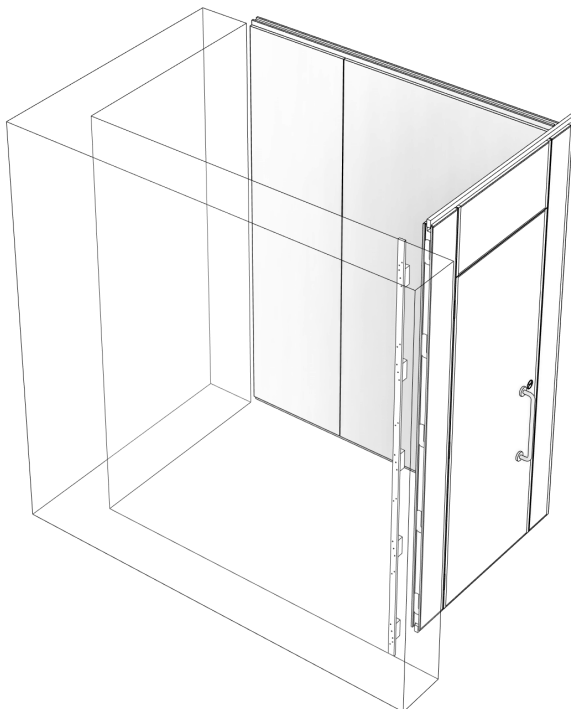
How it works

3D View - View Of Framed Partition



Partitions are available in 1500mm and 1800mm depth and to a minimum height of 2100mm above FFL. Partitions are created with 2 No. 17mm thick bonded panels fixed to 50mm thick plywood frames with secret fixings. Doors are manufactured from lightweight core and pilasters being 50mm thick chipboard cores bonded together. All cores faced, both faces, with appropriate laminate or veneer. All exposed edges to doors and pilasters are pre-lipped with solid hardwood edgings, with vertical edges of doors having rebated meeting stiles, which will be sealed and have clear lacquer finish.

3D View - Wall Connection Detail

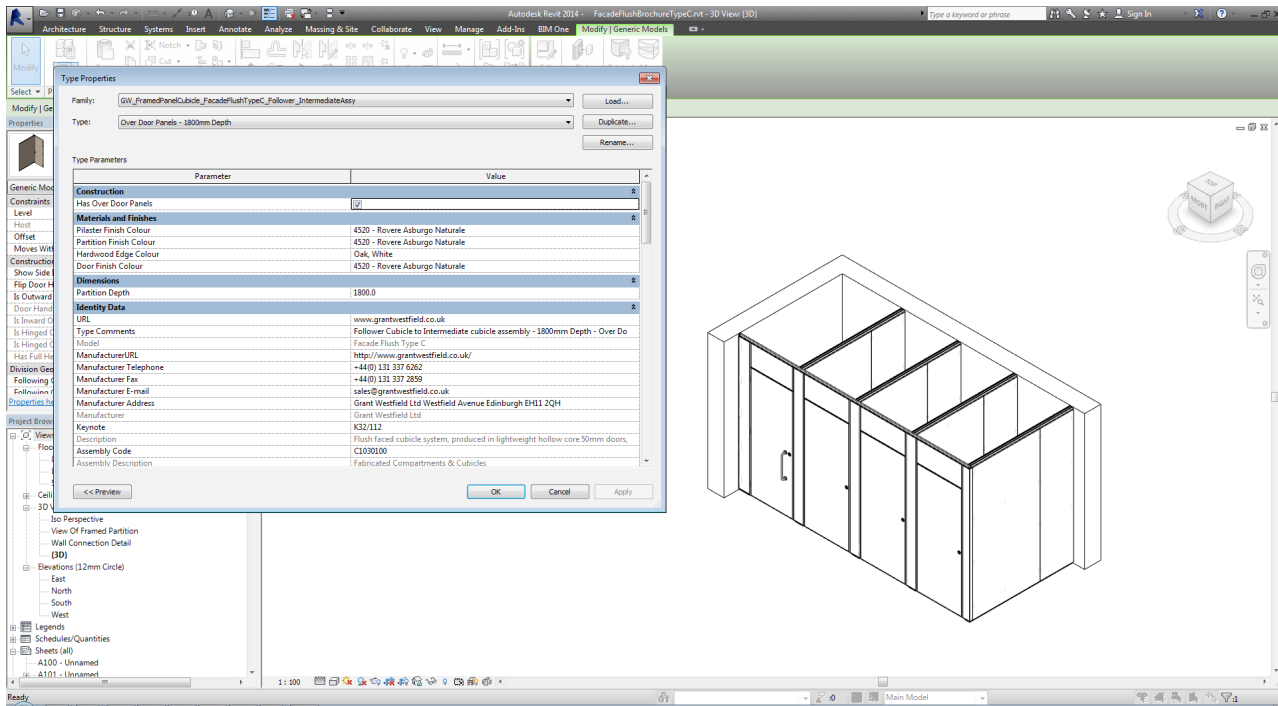


Wall Pilasters are grooved top & bottom to receive front in-fills and is haunched out to take softwood fillets to create a secure connection to the wall. Black compact laminate flash gap spacer is fixed to the side wall.

Facade Flush Type C (Non-Emergency Access) - BIM

Grant Westfield Ltd is committed to the implementation of BIM and fully supports collaborative working to achieve effective and efficiently designed, constructed and managed projects. We will work with our clients and the wider project team to achieve the benefits of an integrated BIM system.

We will comply with BIM standards, best practice and client policies and specifications.



- BIM objects available on website at www.grantwestfield.co.uk
- Created in line with BS 8541
- Contain appropriate parameters for Level of Information (LOI) and COBieData – NBS BimToolkit
- Parametric features to help specifiers design within parameters of the system
- Allows for faster specification process throughout the project



Reference	Façade Flush Cubicle
Description	Flush faced cubicle system, produced in lightweight hollow core 50mm doors, and framed, 84mm thick partitions with solid timber edges, and laminate or veneer faces to client specification.
Structural performance of panel cubicle system	Available on request.
Fire performance to BS 476	Class '1' Euroclass C as standard.
Fire performance to BS EN 13501	Available on request.
Durability	All Laminates used conform to BS EN 438.
System manufacturer	Grant Westfield Ltd
Partitions	84mm thick, 50mm plywood frame with 15mm moisture resistant MDF bonded with high pressure laminate both sides.
Panel supports	Partitions supplied with skirting kickplate as required. Cubicle fronts supported on black compact blocks.
Pilasters	Pilaster is 50mm thick chipboard core with laminate/veneer bonded to both front & rear faces. Solid hardwood edges.
Doors	50mm lightweight honeycomb with 8mm chipboard faced core bonded with high pressure laminate/veneer both sides.
Lippings	Partitions edge filled with chipboard for fixings. Pilasters and doors with solid hardwood rebated vertical edges.

Hardware	<p>Signature Grant Westfield circular faced indicator bolt.</p> <p>Stainless steel adjustable spring hinges.</p> <p>Stainless steel outward opening door handles (optional).</p>
Curtains	n/a
Finish	Erre (R) finish as standard to correctly understand the depth and tactile effect, it is advisable to request a sample.
Material	Lightweight honeycomb composite with 8mm chipboard core with laminated or veneered faces and lacquered solid hardwood edges.
Features	<p>Max height is 2800mm from f.f.l.</p> <p>Can be supplied as a full height door or with an over door panels.</p> <p>Doors - Height 2800mm</p> <p>Pilasters - Height 2800mm</p> <p>Partitions - Height 2800mm</p> <p>Standard Depths 1500mm with duct, 1800mm without duct.</p> <p>Cubicles will be pre-bored for all thru fixings.</p>
Code	BS 8300 section 12 Scottish non-domestic technical handbook 2013.
performance	Approved document M revised 2013 section 5.



HQ:

Grant Westfield Ltd
Westfield Avenue
Edinburgh
EH11 2QH

London Studio:

Unit A, 1 Britton Street
Clerkenwell
London
EC1M 5NW

t. +44(0) 131 337 6262

f. +44(0) 131 337 2859

e: sales@grantwestfield.co.uk

www.grantwestfield.co.uk



GRANT WESTFIELD
TRANSFORMING SPACES SINCE 1881