



**Natural
Stone**



Welcome to the CED 2013 brochure

We have developed our website such that it has far more information than we can put in our literature and we intend that it continues to be the place where great design ideas lie alongside good practical information, the first port of call for those who need help. To this end, it has just been significantly updated. But we also recognise the different qualities in the printed word and hope you will like this 2013 edition.

We are very fortunate to be involved in a business with so many aspects. Every day there are new materials, problems to solve and, sometimes, solutions awaiting a problem. There is nothing in natural stone that is entirely predictable, all materials vary to some degree, some more than others and not just aesthetically because some do not perform as one would expect. A very important part of our business is to try and guide clients to the products which will meet their needs, bearing in mind the likely range of behaviour of the materials.

Technical understanding is growing all the time but, nevertheless, it is the simple tests of water absorption, flexural strength and compressive strength that provide the major insight into a material's qualities. All, however, depends on the sampling from the quarry and this issue has not yet been addressed by the standards institutions. The result is that the integrity of the supplier remains critical.

As with everything we do, finding the economical route to bring your scheme to fruition is why we gladly spend time with designers and contractors at an early stage so that we have in effect value-engineered the work before the design is executed and the integrity of the design is not lost at a later stage of the build process.

In 2012, the geological path was opened at the British Geological Survey headquarters at Keyworth, near Nottingham. While being the main pedestrian artery between the many buildings, the path displays British natural stone paving from all the geological periods. Not only is it fascinating for its geology but the path includes every type of British paving stone in regular production, many of which are not really well known at all. All the materials are pictured individually via the British Stone paving tab on our website home page. We take designers around by appointment and we believe it will be a great benefit to British producers.

We now have showroom display areas in all our five nationwide depots where efficient and friendly staff are on hand to tend to your requirements.

Perhaps because natural stone materials last so long, fashions change slowly, so most materials remain in stock and available for many, many years, but we take the opportunity in each edition to include some new schemes that have used stone effectively and aesthetically and provide fresh ideas for all.

We hope you enjoy this brochure and continue to encourage us to break new ground in every area of the business.

A handwritten signature in black ink, appearing to read 'Michael Heap'. The signature is fluid and stylized, with a long horizontal stroke at the end.

Michael Heap
Managing Director



Contents

4	Riven Paving	36	Cobbles and Pebbles
8	Sawn & Textured Paving	40	Aggregates
12	Plank Paving	44	Cedagravel®
13	Stone Steps	46	Footpath Gravels
14	Stone Circles	48	Natural Play
16	Riven Setts	50	Texture Chart
17	Cropped Setts	51	Commercial
18	Porphyry Setts	52	Case Studies
19	Imperial Setts	58	Special Features
20	Temple Setts	60	British Stone Paving
22	Granite Kerb	62	Acknowledgements
23	Cleaning and Protection	63	Contact
24	Reclaimed Materials		
26	Walling		
30	Rockery		
32	Standing Stones		
34	Boulders		

Photographs within this brochure are intended as a guide to the general character, substance and colour of the materials. However, as these are natural products, there will always be some variation. Items stocked may vary from depot to depot and all products are offered subject to availability. All dimensions and weights are approximate. All business is transacted subject to our standard terms and conditions, a copy of which is available on request.



Riven Paving

Riven stone paving flags are available in a wide variety of materials, each of which has its own unique colour and texture and some have very special technical qualities. Due to their riven finish, all of these products will provide a homely and earthy feel to gardens and landscape schemes. Careful consideration of the type of stone used will make sure that once laid, the paving will last and look good for many years.

Sandstone



Beige sandstone paving and silver grey cropped granite setts (wet)

Sandstone is a sedimentary rock formed from sand sized grains and is ideal for both internal and external use. Careful calibration to a consistent thickness of 26mm +/- 2mm, allows for quick and easy installation. Suitable applications include pathways, driveways, garden patios and public areas. Sandstone paving has a natural variation in colour, split sides, is hard wearing and provides a good slip resistant surface.

“Did you know.....26mm thick paving is 40% stronger than an equivalent paving at 22mm thick.”



Green sandstone paving

Standard Stock Sizes:

400x400mm, 400x600mm,
600x600mm and 600x800mm

Thickness: 26mm +/- 2mm

Additional sizes are available
to order

Limestone



Black and Blue Limestone paving have sawn sides and a riven top surface, providing a natural slip resistance. Limestones are sedimentary rocks and are strong and durable materials. Ideal for both internal and external projects. Suitable applications include pathways, driveways, garden patios and kitchen flooring.

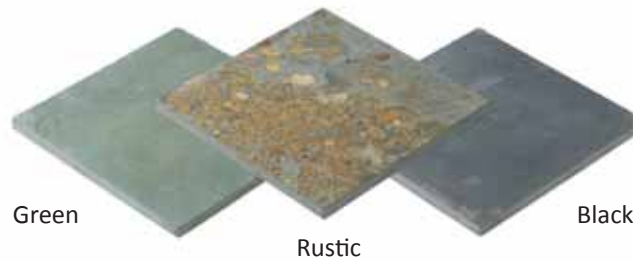
Standard Stock Sizes:

400x400mm, 400x600mm, 600x600mm & 600x800mm

Thickness: 25-35mm

Additional sizes are available to order

Slate



Slate paving is very lightly riven on the surface and has a smoother finish than most other riven materials, giving a more contemporary feel. The riven top will provide a natural slip resistance and each paving slab is produced with sawn sides.

The Black Slate paving is charcoal in colour, the Green Slate can be described as sea green and the Rustic Slate has a predominantly grey base with markings of rustic, brown, ochre and shades of olive.

Standard Stock Sizes:

400x400mm, 400x600mm, 600x600mm & 600x800mm

Thickness: 20-25mm

Additional sizes are available to order

Slate paving is hard wearing and solid in appearance. Suitable applications include pathways, driveways, garden patios, pool surroundings and internal flooring.



Black slate paving



Yorkstone



UK produced Riven Yorkstone is naturally slip resistant and extremely hard wearing. This split sided paving can range from sandy yellow colours through to greys and browns. These warm and earthy tones make it ideal for use around period properties.



Yorkstone paving

Riven Yorkstone paving is split from Yorkstone blocks that are formed in sedimentary layers. Paving is traditionally supplied in random sizes and this is what we stock throughout our depots, however specific sizes can be ordered to match your specification.

Suitable applications include driveways, pathways, garden patios and internal flooring, as well as market places and streetscapes.

Standard Stock Sizes:
Random widths x Random lengths
Thickness: 38-75mm
Additional sizes are available to order

Porphyry

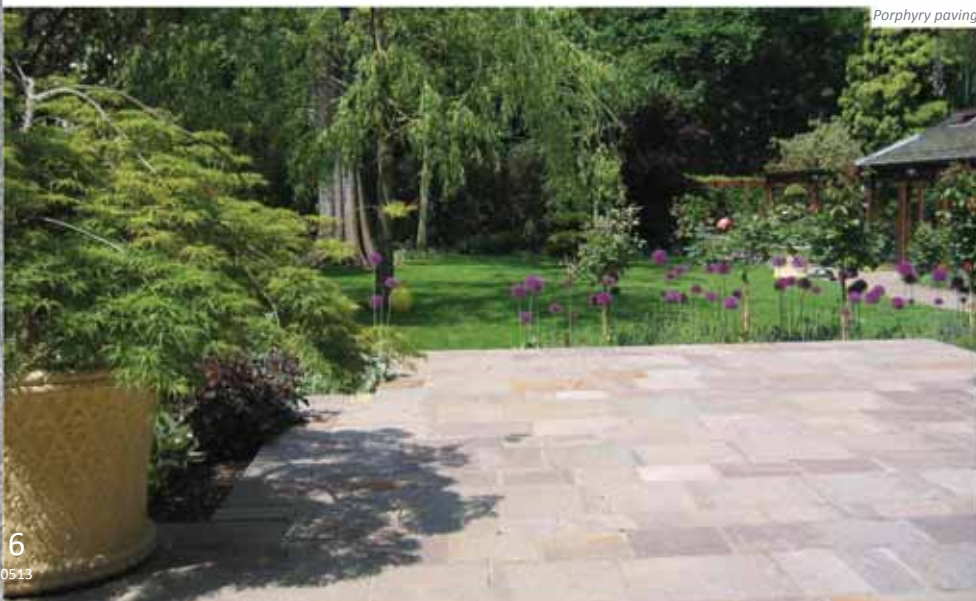


Standard Stock Sizes:
100, 150, 200, 250, 300, 350mm wide x Random Lengths
Thickness: 20-60mm
Additional sizes are available to order

Porphyry paving is a rich, yet gentle mixture of purple, warm grey and orange tones. The beauty of these multi-coloured tones is that they're great for not showing the dirt and unwanted stains. Available with split or sawn sides. Split sided porphyry paving is suitable for gardens, while sawn sided is more suitable for market places or town centres. We stock the split sided with the sawn sided being available to order.

Porphyry is a metamorphic rock of igneous origin. It is an extremely hard wearing material and is very durable. Suitable applications include driveways, pathways, garden patios, internal flooring, market places and town centres.

Also available in sett sizes, please see page 18. Porphyry paving and setts are often used together and their variation in size will complement each other very well.



Porphyry paving



Porphyry paving (wet)

Quartzite



Alta

Alta Quartzite paving has sawn sides and is grey in colour with slight greenish tones and a pale silvery mica sheen along the riven surfaces. Hard wearing and stain resistant, this quartzite paving has extraordinary flexural strength, shock and skid resistance. This allows Alta to be used as a remarkably thin flag in heavy traffic conditions with specific mortar and bed design.

Ideal for use on pathways, driveways, garden patios and internal flooring. Other suitable applications include market places and streetscapes.

Standard Stock Sizes:
200, 250, 300, 350, 400mm wide x Random Lengths
Thickness: 20-30mm
Additional sizes are available to order



Donegal

Donegal Quartzite paving can be used internally and externally. It has sawn sides and is a mixture of silvery grey and golden tones. This attractive paving is exceptionally non-slip and therefore highly suitable for use around swimming pools, whilst being kind to the feet and also having low water absorption.

Donegal Quartzite crazy paving has been extensively used throughout the nationwide Center Parcs' swimming pool areas.

Standard Stock Sizes:
200, 250, 300, 350, 400, 450, 500mm wide x Random Lengths
Thickness: 20-30mm
Additional sizes are available to order



Oppdal

Oppdal Quartzite is available in light and dark tones; a pale slightly greenish-grey or a darker grey. Another strong material, although not quite as strong as Alta, but it does have the ability to be cut like glass to varied shapes with straight or curved edges. Oppdal Quartzite has been supplied to many large projects, often because it is so easy to work and can generally be used to make difficult shapes fit into awkward spaces. This is advantageous in places where it is necessary to work the stone on site. Suitable applications include pathways, driveways, garden patios, market places, streetscapes and internal flooring.

Please note that this is not a stock product, however it can be made to order within a 6-8 week period.



Alta quartzite paving



Donegal quartzite paving



Oppdal quartzite paving

Phyllite



Otta

Otta Phyllite paving is bluish-black in colour and sometimes has scattered and varied warm hues and shades of brown. This attractive paving has sawn sides and the riven surface provides good slip resistance and a smooth sheen, but with scattered crystals of very hard metamorphic minerals proud of the surface, giving Otta Phyllite paving a unique character with extra grip.

Please note that this is not a stock product, however it can be made to order within a 6-8 week period.

Otta phyllite paving



Phyllite paving is an extremely strong and durable meta-slate, and with its very low water absorption and surface sheen, it is easy to keep clean. Suitable applications include pathways, driveways, garden patios, internal flooring, streetscapes, business premises and market places.

Sawn & Textured Paving

Sawn and Textured materials offer a contemporary and modern feel to gardens and landscape schemes due to their clean cut appearance and often minimal colour variation. To create paving from materials which cannot be naturally riven it is necessary to saw them. For many materials it is then normal to texture the surface by either flame texturing or bush hammering to improve the appearance and to make it less slippery.

Granite & Basalt



Granite and Basalt paving are hard wearing products and are ideal for use in modern contemporary designs. They are cut to size and then textured to produce an attractive yet slip resistant surface.

Black Basalt paving is a dark charcoal grey when dry and a solid black colour when wet. All the sides are sawn and the top surface is flame textured. Basalt is a fine grained volcanic rock.

Black basalt paving and black quartz paddlestones (wet)



Blue Grey, Pink and Silver Grey Granite paving is speckled in appearance and consistent in colour with little variation. All the sides are sawn and the top surface is flame textured. Yellow Granite paving is somewhat different. Whilst remaining speckled in appearance the colour will be varied with natural bands of grey and brown running through the yellow, giving a very warm and natural finish to modern contemporary projects but also subtle and varied enough to be used in traditional garden design. All the sides are sawn and the top surface is bush hammered.

Granite and basalt paving are ideal for use both internally and externally. Suitable applications for granite and basalt paving include garden patios, pathways, driveways, streetscapes and market places.

Standard Stock Sizes:

400x400, 400x600, 600x600 & 600x800mm

Thickness:
All colours (except yellow): 25mm
Yellow: 30mm

600mm wide x Random Lengths

Thickness: 50mm

Additional sizes are available to order



Yellow granite paving and temple setts



Blue grey granite and black basalt paving



Bespoke mixed granite paving

Quartzite



Pink

“Pink Quartzite paving has a notably beautiful finish with an interesting sparkle.”

Pink Quartzite paving has a notably beautiful finish with an interesting sparkle, created by the natural mica content in this stone. Sawn from a solid block, as opposed to our other range of quartzite paving, which is naturally riven. Once it has been sawn it is then flame textured creating the attractive, non-slip surface.

Ideal for use in modern contemporary designs, this is a sawn sided product and is extremely durable and hard wearing.

Suitable applications include garden patios, pathways, pool surround, driveways, streetscape, market places and internal flooring.

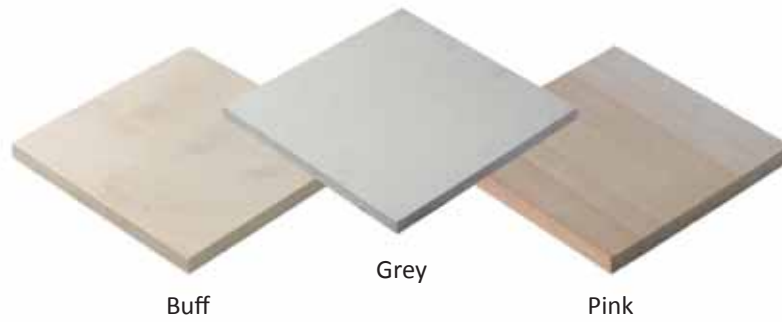
Standard Stock Sizes:

400x400, 400x600, 600x600 & 600x800mm

Thickness: 25mm

Additional sizes are available to order

Sandstone



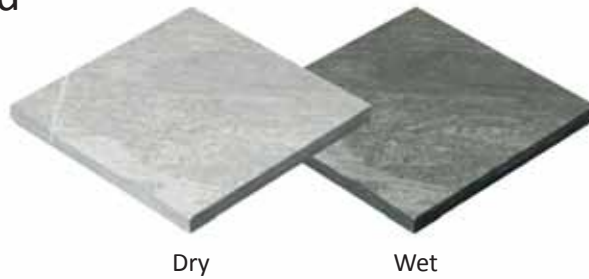
This attractive paving is cut from hard wearing sandstone. Sawn on all sides with the top sandblasted to provide a good slip resistant surface. Available in buff, grey and pink.

The **Buff** and **Grey Sandstones** are light in colour with some varied tones. The **Pink Sandstone** is somewhat different with a predominantly light pink / buff base but with bands of brown to darker pink and yellows running through it. Each are soft in appearance and ideal for use in modern contemporary designs.

Standard Stock Sizes:
400x400, 400x600, 600x600 & 600x800mm
Thickness: 30mm
Additional sizes are available to order



Ebony Cloud



Standard Stock Sizes:
400x400, 400x600, 600x600 & 600x800mm
Thickness: 30mm
Additional sizes are available to order

Ebony Cloud paving has beautiful tones of grey-greens and blacks along with some vivid light coloured almost white detail giving a stunning cloud effect. This attractive paving is a quartz-rich schist with included mica, resulting in a strong and durable stone.

Ebony Cloud paving



Yorkstone



Buff Grey



Yorkstone paving and setts

Our Yorkstone paving is sourced from UK quarries. It is diamond sawn on all six sides and due to its clean lines and crisp surface makes as ideal paving for modern contemporary designs.

Sawn Yorkstone will typically contain two colours; buff and grey, and in time will weather to a more uniform colour. This product is kept in stock throughout our depots. However if single coloured Yorkstone is required it can be obtained to order (see examples below).

Yorkstone paving is extremely hard wearing and durable, and can be used both internally and externally. Suitable applications include pathways, garden patios, driveways, market places and streetscapes.

In addition to paving, a whole variety of other items can be produced in sawn Yorkstone. These can include setts, steps, risers, copings, pier caps and kerb stones.

Standard Stock Sizes:

600mm wide x Random Lengths

Thickness: 50mm

Additional sizes are available to order



Yorkstone paving

Yorkstone copings, steps and paving, and yellow quartz paddlestones



Other colours available to order

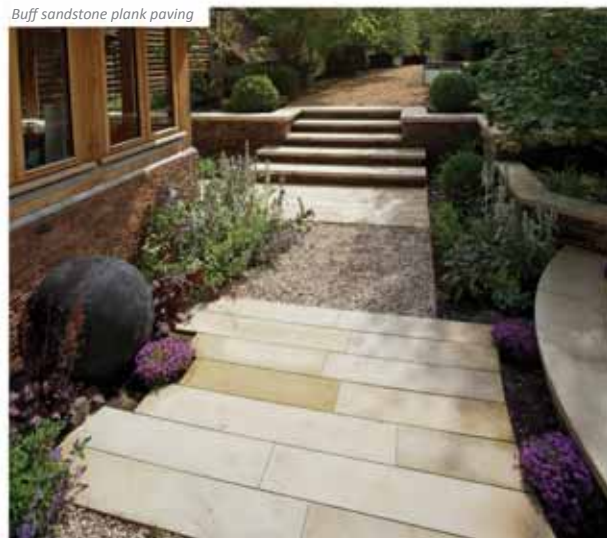
Plank Paving

Plank paving has been produced across three different materials in a variety of colours and textures to provide a sleek and sophisticated paving range. The long slender lines of plank paving will visually create a lengthening or widening effect to the area of use.



Plank paving can be used both internally and externally and is ideal for modern contemporary designs. Use this attractive style on it's own or complement it with the four other stocked sizes; 400x400mm, 400x600mm, 600x600mm and 600x800mm.

Buff sandstone plank paving



Silver grey granite plank paving



Standard Stock Size:

200mm wide x Random Lengths
(random lengths will vary from
600mm to 1200mm)

Thickness:

Granite & Basalt (all colours
except yellow): 25mm
Yellow Granite: 30mm
Limestone: 25-35mm
Sandstone: 30mm

Stone Steps

Steps provide the perfect finishing touch to any garden or landscape area. Meticulously cut from durable granite, basalt, sandstone and limestone these accessories are perfect for use wherever there is a change of level. Held in stock in a variety of colours and finishes, all of our steps are slip resistant and allow for quick and easy installation.

Riven

Available in sandstone and limestone these steps have a riven top surface, three sawn sides and a rock faced dressing to the leading edge. They have been carefully calibrated to a consistent thickness of 50mm +/- 2mm and their lightly riven appearance, along with their natural variation in colour, provides a truly earthy feel.



Beige Sandstone

Green Sandstone

Grey Sandstone

Pink Sandstone

Black Limestone

Standard Stock Sizes:
400mm wide x 1200mm long
Thickness:
Riven: 50mm +/- 2mm
Sawn: 50mm
Additional sizes are available to order

Sawn & Textured

Available in basalt, granite and sandstone these steps have a sawn and textured top surface, with a full textured bull nose to the leading edge. The sandstone steps have been sandblasted, the basalt steps have been flame textured along with all of the granites except yellow, which has been bush hammered. All textures will look attractive on the surface yet more importantly they will provide the slip resistance needed underfoot.

Also available are matching end pieces, as shown on the black basalt step below, to provide a neat finish on corners and end situations.



Sawn yellow granite steps



Black Basalt

Blue Grey Granite

Pink Granite

Silver Grey Granite

Yellow Granite

Buff Sandstone

Grey Sandstone

Pink Sandstone

Stone Circles

Circles can be an individual feature in a garden or they can be used with paving to create character on a patio area.

Our hand cut sandstone circles, and machine cut granite and limestone circles are a striking addition to any garden or landscape. Complete with squaring off kits these items are available in a range of colours to complement our stocked sandstone, granite and limestone paving. The natural riven finish of the sandstone and limestone circles will provide a homely and earthy feel whereas the sawn and textured finish of the granite circles would be ideal for a modern contemporary look.

Yellow, Blue Grey, Silver Grey
& Pink Granite



Green sandstone circle and setts



Beige sandstone circle and buff flint gravel



Standard Stock Sizes:

Sandstone and Limestone
1.8m diameter
2.6m diameter
3.6m diameter

Thickness:
25-35mm

Additional sizes are available to order.

Granite
2.6m diameter

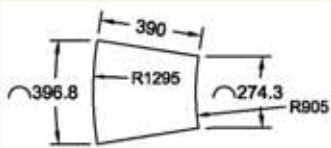
Thickness:
All colours (except yellow): 25mm
Yellow: 30mm

Black limestone circle (wet)





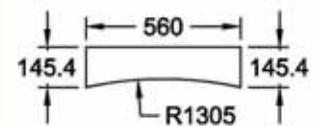
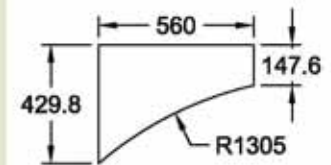
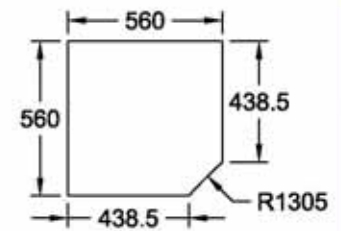
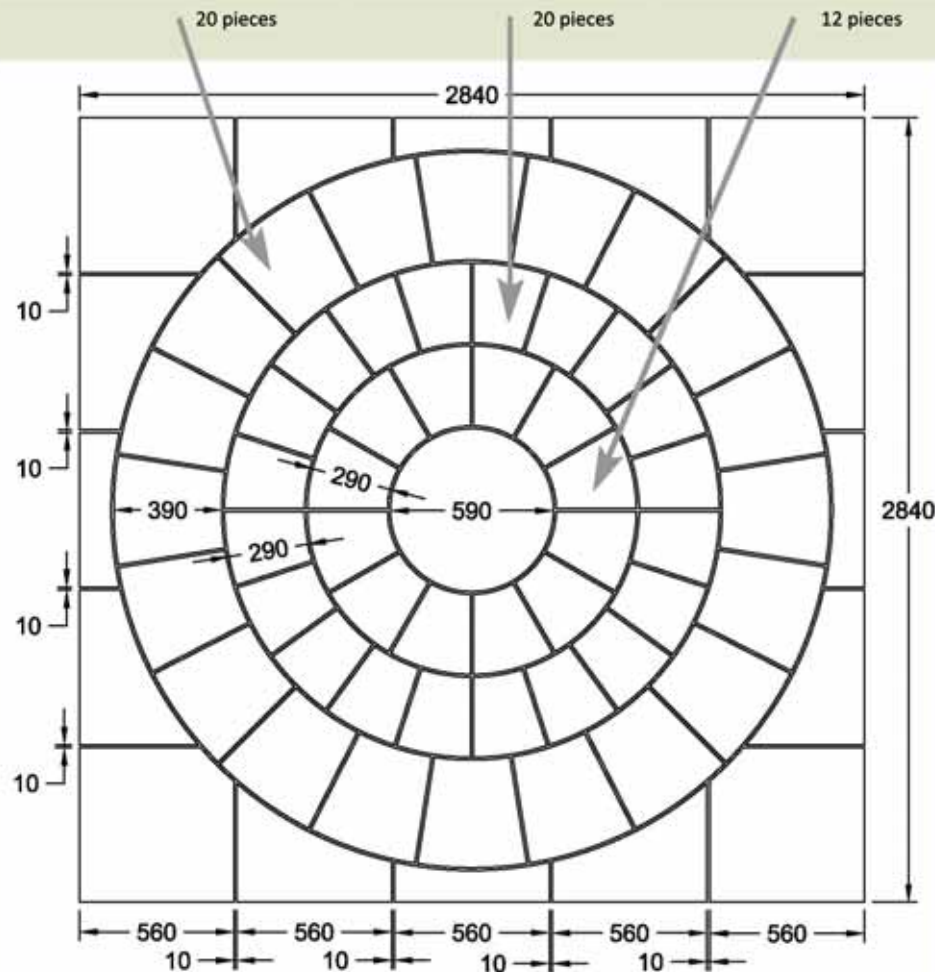
Yellow granite circle and sets, with rounded flint stones and flint gravel



Arrangement of tiles for 2.6m diameter circle

Total number of pieces inclusive of the square-off kit = 69

All dimensions in mm



Riven Setts

Being lightly riven in appearance and with a natural variation in colour these setts provide a homely and authentic feel to any garden or landscape scheme.

Sandstone



Beige



Green



Pink



Rustic

Limestone



Black

Sandstone and limestone setts can be used on their own to create driveways and pathways or they can be used to complement other products such as the sandstone and limestone paving and circles.

Suitable applications include patios and gardens, driveways, pathways, market places, streetscapes and internal flooring.

Standard Stock Sizes:

100x100mm & 100x200mm

Thickness: 40-70mm

Additional sizes are available to order



Green setts and buff sandstone paving (wet)



Beige, green and pink sandstone setts (wet)

Tumbled Sandstone Setts

Tumbled sandstone setts are an additional range of riven setts. Standard stocked colours are Green, Pink and Rustic. They have been tumbled to soften the edges which also creates the effect of ageing. They are soft in appearance due to the gentle roundness of the edges, yet they still maintain the slip resistant surface from the riven tops.

Suitable applications include patios and gardens, driveways, pathways, market places, streetscapes and internal flooring.

These setts can also be used for walling. Please see page 27 for further details.

Standard Stock Sizes:

100mm wide x 150-300mm long

Thickness: 60-80mm

Coverage: approx 7m² /tonne

Additional sizes available upon request

Tumbled green sandstone setts



Cropped Setts

Cropped setts or 'cobbles' as they are sometimes referred to, have been around since Roman times. Almost indestructible, these setts can be purely functional as a hard wearing-course for roads and pathways however by utilising the range of colours and sizes now available, they can now be used for aesthetic reasons as well, providing attractive and varied textures.

Granite & Basalt

Granite and basalt cropped setts are extremely durable and provide a good slip resistant surface. The granites are speckled in appearance and the basalt is a dark charcoal grey when dry and a solid black colour when wet. All sides of these setts are cropped and they are ideal for use on driveways, paths and edgings. Other suitable applications include market places and streetscapes.



Black Basalt
(31G)



Dark Grey Granite
(35R)



Medium Grey Granite
(1R)



Red Granite
(32G)



Silver Grey Granite
(8R)



Yellow Granite
(15R)

Standard Stock Sizes:

Black Basalt	100mm ³ , 100x100x200mm
Dark Grey Granite	100mm ³ , 100x100x200mm
Medium Grey Granite	100mm ³ , 100x100x200mm
Red Granite	100mm ³ , 100x100x200mm
Silver Grey Granite	100mm ³ , 100x100x200mm, 100x50x100mm, 100x150x200mm, 100x200x300mm and 80mm ³
Yellow Granite	100mm ³ , 100x100x200mm

Additional sizes are available to order

"All setts can be cropped to smaller sizes if required."



Dark grey granite cropped setts



Porphyry Setts

Porphyry is exceptional. With excellent flexural and compressive strength and a low water absorption, porphyry is technically very competent.

Porphyry

The beautifully varied colours of Porphyry Setts provide a wonderful ability to mask dirt and stains and visually, the ability to sit happily alongside new and old materials alike. A rich, yet gentle mix of purple, warm grey and orange tones make up this wonderful variation in colour.

Porphyry Setts have a riven top surface and cropped sides. This material is riven along natural layers and although the riven surface can be very flat it still has excellent non-slip qualities, so it is ideal for use around swimming pools and water features.



Porphyry is commonly used across Europe and will be most recognised for laying in fan and arc patterns. Porphyry Setts are superb for use in town centres, market places, driveways and patios.

Also available in paving sizes, please see page 6. Porphyry Setts and paving are often used together and their variation in size will complement each other very well.



Standard Stock Sizes:

- 40 - 60mm³
- 60 - 80mm³
- 80 - 100mm³
- 100 x 100 x Random lengths

Additional sizes are available to order

Imperial Setts

Imperial setts have a sawn and textured top surface with split or sawn sides. They are held in stock in two different sizes, however they can also be produced to order in any size required.

Split sided 92 x 92 x 60mm



Blue Grey Granite

Split sided 92x92x60mm Imperial Setts are a modern interpretation of the cropped sett. Their split sides will provide a cobbled effect with a sawn and textured top, making them easy to walk on and wheelchair friendly.

Designed to provide a neat solution when used with paving: by taking the 92mm dimension and working with a 8mm joint gives a 100mm module which can then be fitted into paving elements of 300, 400, 500 & 600mm dimensions without having to make any cuts.

The other benefit of the 92x92mm dimension is that it can be laid into tight grid patterns, with a 8mm joint, this gives 100 number setts to the m².



Black Basalt



Pink Granite



Silver Grey Granite



Yellow Granite



Sawn sided 100 x 200 x 50 mm



Pink Granite



Black Basalt



Blue Grey Granite



Silver Grey Granite



Yellow Granite

Sawn sided 100x200x50mm Imperial Setts are produced with sawn sides which gives these setts a sleek and modern feel. They are ideal for use in conjunction with the granite and basalt paving (please see pages 8 and 9) or simply on their own for driveways, paths and edging.

Pink and silver grey granite, and black basalt imperial setts



Temple Setts

Temple Setts are produced from granite, porphyry and basalt. Starting with cropped sides, a sawn bottom and a sawn and textured top, they are then tumbled to achieve smooth and softer edges. Their general appearance is remarkably similar to that of old granite setts. When compared with reclaimed material, the beauty of Temple Setts is their standard dimensions that make laying far easier and their flat top surface makes them suitable for disabled access areas.



100mm³



100 x 100 x 125 - 250mm



100 x 50 x 125 - 250mm

“A modern alternative to reclaimed setts”



Available in seven colours; the black basalt is a dark charcoal grey in colour when dry and a solid black colour when wet with the top surface being sawn and flame textured. The blue grey, grey pink, pink and silver grey are granites which will consistently be speckled in appearance. Their top surfaces have been sawn and flame textured. The red porphyry also has a sawn and flame textured top surface and the yellow granite has a sawn and bush hammered top.

Temple Setts can be supplied in whatever ratio of colours is required, or in just one colour alone. Suitable applications include driveways, patios, pathways, market places and streetscapes.

Standard Stock Sizes:	Coverage:
100mm ³	4.5m ² /tonne
100 x 100 x Random lengths	4.3m ² /tonne
100 x 50 x Random lengths	8.6m ² /tonne
(random lengths will be a mix of 125, 150, 175, 200, 225 and 250mm)	
Additional sizes are available to order	



Yellow temple setts



Temple setts - all seven colours (wet)



Granite Kerb

Silver grey granite kerb is held in stock with sawn sides and a bush hammered top and front. All kerbs are approximately 1 metre in length and are extremely hard wearing and durable. The bush hammered tops provide a good slip resistant surface and all are suitable for both public and private applications.



Flat Kerb



Edge Kerb



Radius Kerb



Dropper Kerb



Quadrant Kerb

Standard Stock Sizes:

Straight Kerb

125mm wide x 250mm deep x approx. 1m long
150mm wide x 300mm deep x approx. 1m long
150mm wide x 150mm deep x approx. 1m long
300mm wide x 150mm deep x approx. 1m long
300mm wide x 200mm deep x approx. 1m long

Radius Kerb

Radius kerb is stocked in the above sizes with an external radius of:
1, 2, 3, 4.5, 6, 7.5 and 9

Dropper Kerb

150mm wide x 300 - 150mm deep x 1m long
300mm wide x 200 - 150mm deep x 1m long

Quadrant Kerb

300mm wide x 300mm deep
450mm wide x 200mm deep
600mm wide x 200mm deep

Additional sizes and colours are available to order



Cleaning and Protection

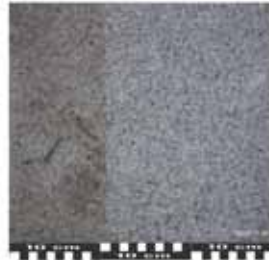
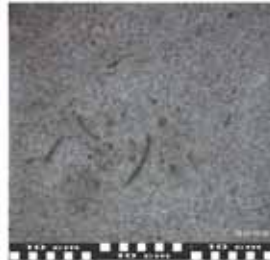
The cleaning and protection of natural stone should never be underestimated. From the completion of a pristine new paving project, to dealing with the effects of modern life, a sustainable cleaning strategy is vital.

The Weiss product range provides a quality and environmentally-considered solution to most types of cleaning, protection and care.

Grundreiniger Intensive Pavement Cleaning



Typical pavement grime on a Granite surface



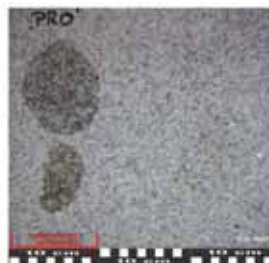
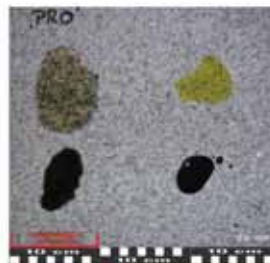
Surface (right) cleaned with diluted Grundreiniger and water

Routine cleaning of all types of natural stone, concrete pavements and floors. Removal of oil and grease stains, rubber tyre and footwear marks, general traffics and pavement grime including typical "fast food" stains. Intensive "spot" cleaning of stubborn areas.

StainProtect PROFI Pavement Protection



Vegetable oil and engine oil allowed to soak into treated (right) and untreated (left) granite



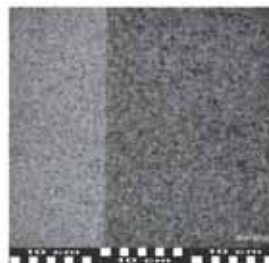
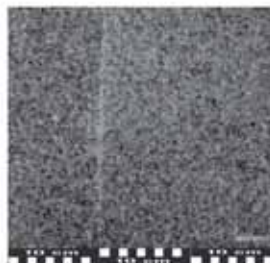
The treated surface (right) is clean after washing with a pH neutral cleaning agent (Grundreiniger) and water

Protection of natural stone, concrete pavements and floors against staining by grease, oil, fats, fast food, tyre rubber, footwear marks and normal pavement grime.

FT Plus Pavement Protection



The untreated surface (left) appears dark when damp. The treated surface (right) is consistent wet or dry



The untreated surface (left) appears light when dry. The treated surface (right) is consistent wet or dry

"Wet look" colour enhancer for natural stone and concrete pavements, giving a consistent appearance and uniform colouration during both wet and dry conditions. Also provides protection against staining by grease, oil, fats, fast food, tyre rubber, footwear marks and normal pavement grime combined with water repellency.

Cement Stain Remover Construction Site Cleaning



The removal of cement staining from natural stone surfaces, both internal and external. Suitable for most types of granite and some sandstones, also acid resistant man-made paving and flooring elements such as ceramic tiles and terra cotta. Not for use with Limestone, Basalt, Marble and some types of Sandstone.

Reclaimed Materials

The earthy look and character that reclaimed products provide has been acquired from many years of weathering and wear, which will add a historic quality and feel to any area where they are used. Environmentally friendly, they will continue to look good over the years to come.

A wide variety of reclaimed material is held in stock throughout our depots. Whilst many different colours and sizes of setts, flags and kerbs are possible, availability of any one particular material cannot be guaranteed. However we will always endeavour to source the particular quantity, size, finish and colour to suit project requirements.



Flags



Setts



Kerb

The beauty of reclaimed materials is the instant charm they add to the area of use. Suitable applications include garden patios, driveways, pathways, market places and town centres.



Reclaimed yorkstone flags

In addition to the flags, setts and kerb we strive to meet all requirements and have therefore pursued many other reclaimed product requests from walling, to gate posts.

Reclaimed materials are available in the ever popular granite and yorkstone, however we also source and supply limestone, slate, portland and many more British materials. Once sourced, from genuine demolition and domestic projects, we can sort and deliver to site.

A visit to one of our depots to select and discuss the materials you require is strongly recommended with all reclaimed products.

Ideally you should allow the time to find and acquire the material before setting up the laying contract.



Reclaimed yorkstone flags



Reclaimed granite setts and kerb

Cathedral Sandstone

Cathedral Sandstone is an economic alternative to reclaimed yorkstone flags and due to the 25-35mm thickness, laying is far easier and quicker.

This attractive paving has been artificially aged to create the soft finish similar to the edges and surface of reclaimed Yorkstone. Furthermore Cathedral Sandstone is supplied in random widths x random lengths, reflecting the size variation of the Yorkstone.



Cathedral sandstone paving

Walling

Add character and distinctive dimensions, such as seating areas and raised planters, to your garden or landscape with our range of walling products.

Quartz Paddlestones



Black



Yellow



Quartz Paddlestones are stocked in two colours; black and yellow. We originally started to stock these for laying loose in the landscape or perhaps for laying in mortar to form paving, however we were surprised and delighted to see the success obtained when using these stones in walling. With a little selection it is really quite easy to lay horizontal rows, creating a modern contemporary feel. Tumbled to form soft rounded edges, they are extremely eye catching and have been used in both private and public situations.

Standard Stock Size: approx. 100-300mm diameter

Coverage: approx. 3.5m² /tonne

Yellow quartz paddlestones



Tumbled Sandstone Walling



This Sandstone walling has been tumbled which softens the edges and also creates a time worn feel. Standard stocked colours are green, pink and rustic. Ideal for both internal and external use, our tumbled walling will complement our Sandstone paving range (please see pages 4 and 10).

They are soft in appearance due to the gentle roundness of the edges and have beautiful natural colourings.

Suitable applications include garden walls and raised flower beds. This product can also be used as setts for paving. Please see page 16 for further details.

Standard Stock Sizes:

100mm wide x 150-300mm long

Thickness: 60-80mm

Coverage: approx 4m² /tonne

Additional sizes are available to order

Knapped Flints

“The traditional local building material in the South East of England.”

Knapped Flints are still produced in the traditional way which involves individually splitting the flints by hand and then finishing to give a flat face which is set facing outwards in the wall. This allows the glossy black and blue interior to be revealed. It is then common practice to place a few flints showing the white skins within the mass of the knapped material. These white chalk skins are tough and durable.

Suitable applications include building new walls and the repair and restoration of existing knapped flint walls.

In addition to the standard stock size, we can also supply whole flints and different qualities to match existing work.

Standard Stock Sizes:

75-175mm face with a 75-100mm bed

Coverage: approx. 8m² /tonne

Additional sizes are available to order



Tier® is a real stone panelling system specifically designed to create a distinctive, natural stone finish wherever it's used. The panels rise in interlocking 'tiers', fitting seamlessly together, eliminating the need for specialist labour and making Tier® a quick and easy system to use.

The Standard Range

We stock the Standard Range which is made up of six different panels. Multicolour is a stunning mix of slate giving a combination of earthy reds, purples and greys. Red Sandstone is a combination of warm reds and browns, and the Quartz panels are made up of warm creams, beiges, yellows and pinks. The Rustic Granite panels are highly textured and consist of greys, browns and yellows to provide a warm traditional finish. Finally both the Slate and Thin Slate panels are a dark black with hints of rustic colourings.



Multicolour



Red Sandstone



Quartz



Rustic Granite



Slate



Thin Slate

"The simple, yet clever 'Z' formation allows each section to interlock together, producing all the charm & elegance of a natural stone wall."



Thin slate Tier® panelling



Multicolour Tier® panelling

The Contemporary Range

The Contemporary Tier® Range is made up of four different panels. Charcoal is a basalt panel and is mid to dark grey in colour. Ivory is a stunning mix of creams and whites, providing a warm and soft appearance. The Ochre panels encompass a broad range of neutral colours and the White panels are an elegant quartz with a unique white colour that's light, yet bright, in appearance. The whole contemporary range is stunning and smart, and ideal for use in modern designs.



Charcoal



Ochre



Ivory



White



Stock Panel Size:

610mm wide x 215mm high

Thickness: 35-45mm

The two ranges make Tier® ideal for both traditional and modern designs. Every modular panel is completely unique, each having its own colours, sizes and textures.

Suitable applications include both internal and external walls and on commercial or residential projects, making this product versatile enough to suit builders, architects and home owners.



Quoins and Corner Panels

Also available are Quoins and special corner pieces to allow the build to continue when approaching corners. The quoins and corner panels will match and complement the whole Tier® range and they will add character and provide the finishing touch to the corner and/or window reveal.

“Tier® will produce little waste during construction and requires no maintenance after installation.”

Rockery

Rockery is available in a variety of stone types, sizes, colours and shapes. The featured pieces below are a selection of rockery generally available and are held throughout our nationwide depots, however depending upon your geographical location and the depot you use, other rockery types may be available.

Most Rockery stones can be supplied in a wide variety of sizes, ranging from small pieces, through 1 to 2 man-handleable blocks to large pieces weighing several tonnes. Use rockery pieces singularly or use them in bulk, they will either way complement and enhance any landscaping scheme.



Firebird Gneiss



Harlequin Quartzite



Golden Quartzite



Whinstone

Firebird Gneiss is a very dramatic quartzite rock. It is a dark greenish grey to nearly black colour, with flaming ribbons and vivid bands of pink.

Often chosen by Japanese garden designers who understand the importance of the form of the rock, Harlequin Quartzite rockery is wonderfully interesting with subtle colourings. It is a blue grey banded rock with veins of pink, red, white and grey granite, all cut by pale greyish green coated fracture planes. Some blocks are often flat on the tops and bottoms.

Golden Quartzite is a wonderful rock, rich in colour even when dry. Individual pieces have pale to medium tones of orange and brown colourings and they look great indoors as well as out.

Whinstone rockery is much used for walling in Scotland and the North of England. Mostly dark grey to black with occasional speckled white and red colourings.



Harlequin rockery



Blue Slate



Green Slate



Plum Slate



Plum slate rockery

Blue Slate is blue grey in colour with some occasional brownish gold staining.

Plum Slate rockery has similar staining effects as the blue but with a plum to lilac colour base.

The Green Slate is a greenish grey, stratified, fine-grained slate rockery. Its olive green colouring lends itself to blending in with surrounding planting.

All slate rockery can be used as individual pieces on top of a mulch layer or combined to make rockeries and water features. Pieces are elongated and slabby.



Weathered limestone rockery



Limestone



Purbeck



Weathered Limestone

Limestone is a nice straightforward rockery stone. The pieces are angular in shape and a light white to grey colour.

Purbeck is a light yellowish grey limestone. These rockery pieces can be quite slabby and can be built up in a wall effect to look like a natural outcrop.



Weathered Limestone comes from the top surface of a working aggregate quarry. Landscape designers appreciate the eroded, weathered look of this stone. Grey in colour, this water-worn limestone bestows a timeless quality, instantly giving the appearance of having lain there, exposed to the elements, for hundreds of years.

Meadowgrass Marble

Once quarried on the Isle of Iona, Meadowgrass Marble has been a favourite of sculptors and jewellers for centuries. Individual pieces range from pure white to a mid-grey with tinges of green.

“It is the form of the stone, not just the colour, that governs the effect”



Highland red sandstone rockery



Highland Red Sandstone



Slabby Sandstone



Yorkstone

Historically Scotland's 'Old Red Sandstone', Highland Red Sandstone is a warm brownish red colour and is distinctively slabby. This versatile product is available as rockery stone, as eye catching slabs up to 1.5m x 1m x 0.4m in size and as selected rough-coursed walling stone.

Slabby Sandstone is a brown, blocky rockery stone. Often with flat top and bottom surfaces this attractive, earthy rockery is ideal for building layers and creating height in any landscape scheme.

Yorkstone rockery is a yellowish brown, angular sandstone that has been used for centuries in its different forms. Its warm texture and appearance provides a traditional homely feel.



Yorkstone rockery and buff thames aggregate

Standing Stones

As well as bringing a sense of mystery to your garden or landscape, standing stones are ideal to focus attention on a particular part of the landscape.

Standing stones have been an integral part of the human subconscious since man first started to worship the gods. They have been used in just about every religion, all across the world, Stonehenge being the most famous example of this.

Variations of texture, size and colour are available throughout our nationwide depots. We also offer a drilling service for all feature stones to create water features or to enable spiking for stability.

Purple Schist



Purple schist standing stones and green basalt aggregate

A subtle and easy to use finger-like standing stone with an almost woody texture. Purple Schist feature stones are mostly purple with light greenish grey and brownish orange markings.

These monoliths will provide height with little weight, which is wonderful for providing structure and shape to small gardens with poor access.

Standard Stock Sizes:

approx. 200mm-2m high

For larger pieces please contact us to discuss your requirements



Blue slate standing stones

Slate

Blue Slate standing stones are dark blue in colour with tones of grey and brown. Green Slate standing stones are an earthy green colour with some occasional gold staining. Both can be used vertically, horizontally and in striking combinations.

The rugged familiarity of slate produces spectacular effects with some pieces up to 5 metres in height.

“The powerful stratification of Slate makes the stone dominant, with great presence”

Standard Stock Sizes:

approx. 200mm-2m high

For larger pieces please contact us to discuss your requirements

Blue



Green



Blue slate standing stone and rockery pieces, scottish beach pebbles and meadowgrass marble aggregate



Boulders

Our boulders are sourced from all over the UK and Europe.

Natural boulders can make such a difference to any garden, landscape, beach, stream, play or pool scheme. It is worth remembering that a few larger boulders have much more of an effect than many smaller ones.

When positioning and placing boulders in your landscape project, think about burying a small portion of the stone base beneath the ground which will provide a more natural appearance.

Caledonian



Standard Stock Sizes:

approx. 200kg-16 tonnes+ each

For larger or special pieces please contact us to discuss your requirements

A mixture of various colours and stone types. Caledonian mixed glacial boulders can be light to mid-grey granites with tones of pink. Also within the Caledonian range are grey to buff colour quartzites, which are often finely banded and black and pink colour quartzites, which are well banded. Finally, there are the spectacular black and white banded gneiss, which can be supplied separately if required.

All Caledonian boulders are well rounded and smooth from glacial transport, although some of the quartzites can be blockier which makes for excellent seat boulders.



Celtic



Standard Stock Sizes:

approx. 200kg-12 tonnes+ each

For larger or special pieces please contact us to discuss your requirements

These mixed glacial boulders are a variety of colours however they are all predominantly green tinged, befitting their Irish credentials. Celtic boulders can range from a very dark green-grey colour (near to black when wet), through to greenish mid-grey and pale grey, to a pinkish-grey. All can sometimes have additional tones of sepia and orange-brown, especially the darker, iron-rich stone types.

Gabbro



Standard Stock Sizes:

approx. 200kg-12 tonnes+ each

For larger or special pieces please contact us to discuss your requirements

Rustic, slightly sombre and atmospheric shades of mid to dark greys and browns. Gabbro boulders are roundish in shape and have rough surfaces which are great for climbing on. Perfect for a misty, shaded glade, these natural boulders will look as though they have been there forever.



Gabbro boulders



Gabbro boulders and rounded flint stones

“With the correct placing, boulders can create gardens that appear to have evolved naturally”

Porphyry Plattens



Standard Stock Sizes:

approx. 200-600mm diameter

For larger or special pieces please contact us to discuss your requirements

Purplish brown and bluish grey in colour. Porphyry Plattens are naturally very smooth, roundish and quite flat in shape. They make for ideal stepping stones, either in a shallow pond or stream, or a dry riverbed.

Porphyry Plattens are moraine boulders that have then been further tumbled and smoothed in alpine rivers. Due to the original porphyry rock being slabby the result is a much flatter stone than would be the case with a granite, hence plattens being ideal for stepping stones.

Cobbles and Pebbles

With a large selection of Cobbles and Pebbles held in stock throughout our nationwide depots, we will normally be able to supply just the right materials for the effect and visual look that you desire. If we don't have just the thing, we try our best to find exactly what you are seeking.

Ideally suited for water features and general design use, these materials are some of the mainstays of garden design.

Scottish Beach Cobbles and Pebbles



Cobbles



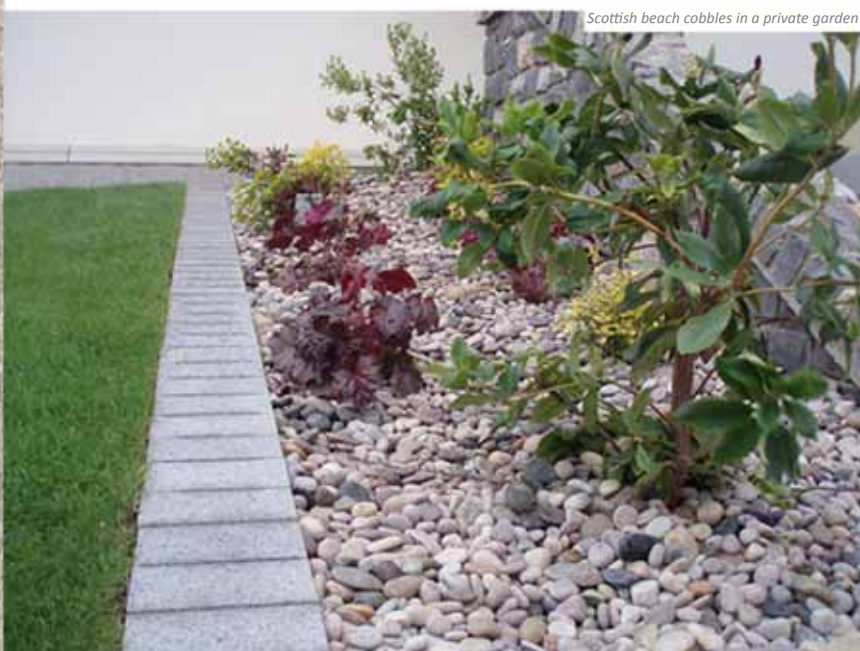
Pebbles

Specially selected from the Highlands of Scotland, our Scottish Beach Cobbles and Pebbles come in a natural variety of colours and selected sizes. Formed by the tidal reworkings of a glacial river deposit this magnificent product is second to none in a truly international sense. CED are very proud to have developed this product exclusively in the UK for over twenty years.

When dry these stones are predominantly light greys with hints of pink and other pastel tones. When wet these multi-pastel tints, often speckled or banded, are accentuated. Suitable applications include ponds, pebble pools, water features and gravelled surfaces (including Cedagravel®, please see page 44).



Scottish beach cobbles at the London Zoo



Scottish beach cobbles in a private garden

Standard Stock Sizes:

- 8-4mm
- 14-8mm
- 20-14mm
- 30-20mm
- 40-25mm
- 50-30mm
- 75-50mm
- 100-75mm
- 200-100mm

“The smoothest and most rounded natural cobbles and pebbles not just in the UK but Europe as well.”



Rounded Flint Stones

Smooth in appearance and naturally rounded by the sea, these flint pebbles are grey and brown in colour, typically in keeping with the colour of S.E. England. Rounded Flint Stones are versatile pebbles often used as an attractive drainage medium around buildings. They can also be used for mulching.

Standard Stock Size: 40-20mm



Sperrin Pebbles

Sourced from the Sperrin mountains of Northern Ireland, these attractive pebbles are multi-coloured yet with a noticeable white mix running through them. Sperrin Pebbles have the smooth characteristics that our Scottish beach cobbles and pebbles have however they are slightly darker in colour.

Standard Stock Size: 10 and 20mm



Meadowgrass Marble Cobbles

These decorative cobbles are white and grey in colour with attractive tinges of green. Meadowgrass Marble Cobbles are ideal to use for mulching as well as for use in small or large water features.

Standard Stock Size: 150-80mm



Pearly quartz pebbles, otta phyllite paving and black quartz paddlestones

Pearly Quartz Pebbles

A well rounded quartz pebble. Warm white to light grey in colour, these decorative stones are ideal for use in Japanese gardens and to lighten darker areas of your garden or pathway.

Pearly Quartz Pebbles hold their colour well and stay cleaner than most light coloured pebbles and aggregates.



Standard Stock Sizes:
6-4, 12-8 and 16-12mm



Barleycorn quartz and flat grey pebbles

Barleycorn Quartz Pebbles

Contemporary, yet soft in tone, these decorative pebbles are a warm golden cream in colour, both rounded and sub-rounded in shape.

Barleycorn Quartz Pebbles are a popular choice for use with Cedagravel®. Other suitable applications include pathways, loose driveways and mulching of borders.



Standard Stock Size: 12-7mm



White Marble

A pure pearly white colour, these attractive cobbles will brighten any garden. The smaller pebbles are suitable for mulching while the larger cobbles can be used as a stunning feature on their own. These are the whitest cobbles we have found.

Standard Stock Sizes: 40-20, 60-40, 80-60, 120-80 and 300-200mm



Silver Grey Granite

These granite cobbles are a speckled silver grey colour and are always a popular choice. Suitable as a decorative feature, with or without water, the Silver Grey Granite Cobbles are remarkably smooth and well-rounded.

Standard Stock Sizes: 80-40mm



Rainbow Cobbles

Light golden coloured cobbles with red and orange banding. Rainbow Cobbles are suitable as a decorative feature, with or without water, and the smaller sized cobbles can be used for mulching. These sandstone cobbles are a vivid eye-catcher.

Standard Stock Sizes: 80-40 and 300-200mm



Angel Stones

These attractive cobbles are green to grey in colour with bands of white. Angel Cobbles are suitable for mulching as well as for use in small or large water features. These attractive cobbles are beautiful and striking.

Standard Stocked Sizes: 80-40 and 300-200mm



Caledonian Cobbles

Caledonian Cobbles are light to mid grey in colour, with some attractive tinges of pinks through to yellows. These decorative cobbles are ideal to team with our Caledonian boulders.

Standard Stocked Size: 400-150mm



Highland Cobbles

Similar geology and colour tones to the Caledonian cobbles, with the increased roundness and smoother texture created by glacial-alluvial movement.

Standard Stocked Size: 400-200mm





Flat Pebbles



Beige



Green



Grey



White

Flat beige and white pebbles



These smooth textured, hand picked beach pebbles offer timeless beauty to any landscape. These are the flattest pebbles available and are ideal for Japanese gardens, water features and especially for constructing pebble mosaics.

Standard Stock Sizes: 40-20mm & 70-50mm

Polished Pebbles



Black



Mixed



Red



White



Yellow

Highly polished, siliceous pebbles of different colours are a most attractive alternative for mulching on small planters, as well as for use in small or large water features. Individually hand picked for their colour, these polished pebbles are a very striking addition to a planter or water feature. Due to their high degree of polish they have a rich colour when dry and will stay clean, a big benefit for both inside and out use.

Standard Stock Sizes: 60-20mm

Aegean Cobbles



Black



Green



Blue



Red



Yellow

Available in five stocked colours, these cobbles are hand selected for maximum roundness and optimum colour. All colours are non-alkaline (free from carbonate).

Ideal for decorative use, mulching of borders and water features.

Standard Stock Sizes: 40-20, 60-40 and 80-60mm

Aggregates

Aggregates are available in a variety of stone types, sizes, colours and shapes. The featured aggregates below are a selection of those available and held throughout our nationwide depots, however depending upon your geographical location and the depot you use, other aggregate types may be available.

Decorative aggregates are suitable for a variety of uses including driveways, pathways, mulching of borders and water features. All the images below show the aggregates both dry and wet.

Amber Flint
6mm



Buff Flint
20mm



Flint Gravel
10 and 20mm



Golden Flint Gravel
6, 10 and 20mm



Rougeite
8 and 11mm



Sea Flint
10mm



Black Slate
20 and 40mm



Blue Slate
20 and 40mm



Green Slate
30mm



Plum Slate
20 and 40mm



Rustic Slate
20 and 40mm





Buff Thames
20mm



Cotswold
14 and 20mm



Irish Buff Sandstone
20mm



Grey Limestone
10 and 20mm



Meadowgrass Marble
8, 14 and 22mm



White Limestone
6, 10 and 20mm



White Marble
14mm



“We can match most materials, new or old, just send us a sample.”

Traxmax
10mm



Produced from 100% recycled ceramics, ideal for all landscaping applications where environmentally friendly products are required.

Traxmax aggregate



Black Basalt
6 and 14mm



Green Basalt
6 and 14mm



Granite
6, 10 and 20mm



Irish Pink Granite
10 and 20mm



Pink Granite
10 and 20mm



Red Felsite
5, 14 and 20mm



Red Porphyry
14mm



Scottish Grey Granite
10, 14 and 20mm



Scottish Grey Pink Granite
10 and 20mm



Silver Grey Granite
6, 10, 14 and 20mm



Silver grey granite aggregate



Golden quartzite aggregate and Yorkstone rockery

Golden Quartzite
14 and 20mm



Irish Barley Quartzite
10 and 20mm



Irish Buff Quartzite
10 and 20mm



Irish Rosemary Quartzite
10 and 20mm



Mauve Schist
6mm



Pink Horticulture Quartz
14mm



Quartz Gravel
10 and 20mm



Scottish Rose Quartzite
20mm



Dried and Bagged

Amber Flint
0.5 - 0.3mm, 1 - 0.5mm
2 - 1mm and 4 - 2mm



Rougeite
3 - 2mm



Silica Free Slag
0.8 - 0.1mm and 2.2 - 1.4mm



White Calcined Flint
0.2 - 0.02mm, 1 - 0.4mm
1.6 - 1mm and 2.5 - 1.6 mm















Cedagravel® Gravel Stabilisation

Cedagravel® is a unique gravel stabilisation system that transforms loose gravel pathways and access areas into a firm gravel surface.

Cedagravel® has been through extensive research and development to bring you the very best gravel stabilisation system on the market. The large folding sheets are fitted with a geotextile underside and have been tested to 400 tonnes per m² when filled. Once filled, the gravel compacts and will not spread, thus allowing for easy and effortless trafficking.

Key Features

-  Low Maintenance
-  Easy and Effortless to Walk on
-  Accredited base for Lodge/Caravans
-  Quick and Easy Installation
-  Only 50-60mm of Gravel
-  Geotextile Underside Inhibits Weed Growth: Less Herbicides
-  Easy Driving, No Pits, Ruts or Puddles. Ideal for Driveway
-  100% Porous: Reduces Flooding and Ground Water is Replenished
-  Can be used on any incline that does not exceed 1:10
-  SUDS Friendly, Allows Drainage
-  100% Recyclable Polypropylene
-  Wheelchair and Pushchair Friendly



The standard sheets are 1.6m x 1.2m x 40mm. They are lightweight therefore no special lifting equipment is required. The honeycomb can easily be cut with a power or hand saw to form any shape required.

Cedagravel® supports the use of rounded pebbles and any decorative aggregate up to 14mm. This allows for a wider range of products to be used and designs created. Please see pages 36 to 43 to find pebbles and aggregates suitable for use with Cedagravel®.



Cedagravel® provides an excellent low maintenance SUDS compliant surface and is designed to cope with vehicular traffic, up to and including commercial, utility and emergency traffic, with no compromise in strength and durability.

New and Improved

- Using the latest technology and computer aided design simulations to find the ideal balance between compressive strength, rigidity, abrasion resistance and flexibility, we have been able to reinforce the Cedagravel® system to greatly withstand the turning forces placed upon it when vehicles turn their wheels, whilst also achieving a higher flexibility within the system. This enables Cedagravel® to follow the contours of the sub-base, without causing significant gaps between it and the sub-base, yet still giving unbeatable gravel stabilisation properties and a greatly increased lifespan.
- By incorporating what is probably the strongest, fully permeable geotextile fabric on the market, along with the improved tensile strength of the plastic honeycomb, the risk of the gravel infill breaking through the geotextile layer has been greatly reduced to almost nothing.
- Using the latest in plastics technology, Cedagravel® is able to withstand temperatures of below freezing without becoming brittle. An important factor to consider with the recent harsh winters that the UK has been enduring.
- The large sheets of 1.6m x 1.2m now fold in half to allow for easier handling and distribution, without compromising strength or durability.

Recommended Installers

Cedagravel® has a national network of independent recommended installers. For further information please contact us or visit www.ced.ltd.uk/cedagravel.



1.) Prepare sub-grade



2.) Lay MOT Type 1



3.) Cover with a layer of Sharp Sand



4.) Place the sheets over the prepared ground



5.) Fill the sheets with gravel



6.) Finished result



Footpath Gravels

These specially graded gravels give a firm surface ideally suited to footpaths, pedestrian or recreational areas where excessive wear would occur on grass.

CEDEC®

The principle of CEDEC® footpath gravels is to form a firm but porous structure that retains moisture yet allows any excess to flow through. The materials used are specially graded decorative aggregates, ideal for areas where the traffic is too heavy for grass but where a natural appearance is desired.

Standard Stock Size: 6-0mm



Available in three colours; red, gold and silver. The red was the first product developed in our CEDEC® range. Following a request during the construction of Canary Wharf for a footpath gravel that was free of limestone so as not to affect the pH of the soil around the trees. It was suggested that it should be something like the surface upon which the French play boules.

Following extensive research and development two British aggregates were found to have the correct grading and shape profiles to pack efficiently and they became CEDEC® Red and CEDEC® Gold. CEDEC® Red was chosen for Cabot Square at Canary Wharf. It worked well and in response to demand from other designers CEDEC® Silver was developed to complete the range.

CEDEC® footpath gravels comprise of granite or quartzite, which are chemically inert, durable and will not affect the pH value of the surrounding soil. This is important where newly planted trees or pH-sensitive plants are sited. They are very porous materials, they pack but they do not set.

In order to function effectively, CEDEC® needs to be rained upon and walked upon. It will not be effective indoors or under permanent shelter. Rainwater will percolate downwards, so there is no need for surface water drainage systems. CEDEC® must not be laid on concrete or any other non-porous base unless a special drainage layer is incorporated into the design.

Coverage of CEDEC® is approximately 10m² per tonne, compaction being about 25%.



SuperCEDEC®

SuperCedec® has been developed to allow the successful use of the established Cedec® to be extended into some of the more awkward applications where it is not ideal, such as high usage areas and when adjoining hard paving.

SuperCedec® has the same natural appearance but with only a slight loose crumb on the surface. It is much firmer than Cedec®, but equally as permeable.

SuperCedec® uses Cedec® as the base material with natural and organic additives to produce a firm surface that is more resistant to scuffing and being kicked around. The permeable nature of this product combined with its stable structure makes SuperCedec® ideally suited for use in urban tree pits and footpaths.



SuperCEDEC® Red



SuperCEDEC® Red, Hereford Cathedral

Robert Myers, of Robert Myers Associates, commented, "We specified SuperCedec Red for the informal seating areas beneath mature trees in the Close at Hereford Cathedral, where a firm but permeable surface was required. The material has withstood heavy use and has held its shape well; it has formed a natural looking, hard wearing, porous surface that appears entirely at home in its historic surroundings."

Like Cedec®, in order to function effectively SuperCedec® needs to be used and rained upon, however it will also function under cover if watered.

Available in the same three colours; gold, red and silver.

After compaction, coverage of SuperCedec®, either in tree pits or as a footpath gravel, is approximately 10m² per tonne at 50mm thick, compaction being about 25%. So, in order to compact to 50mm, an initial non-compacted layer of 65mm is required.

NOTES:

Although Cedec® and SuperCedec® have been designed for pedestrian application, occasional use by emergency vehicles, cars, lorries or maintenance equipment should not cause any significant damage, providing the laying instructions have been adhered to.

Correct laying and maintenance is very important for footpath gravels. Please refer to our website or ask for a copy of the instruction leaflet.

Golden Amber



Standard Stock Size: 14-0mm

Golden Amber is a material quarried from selected limestone, graded 14mm to fines and has a high content of naturally occurring marl which gives this product its self binding properties, but also makes Golden Amber a non-porous surface.

Unlike CEDEC® footpath gravels, the Golden Amber is limestone based therefore it is not an inert product and can affect the pH levels in the soil.

Coverage of Golden Amber footpath gravel is approximately 10m² per tonne, compaction being about 25%.

Golden amber footpath gravel



Natural Play

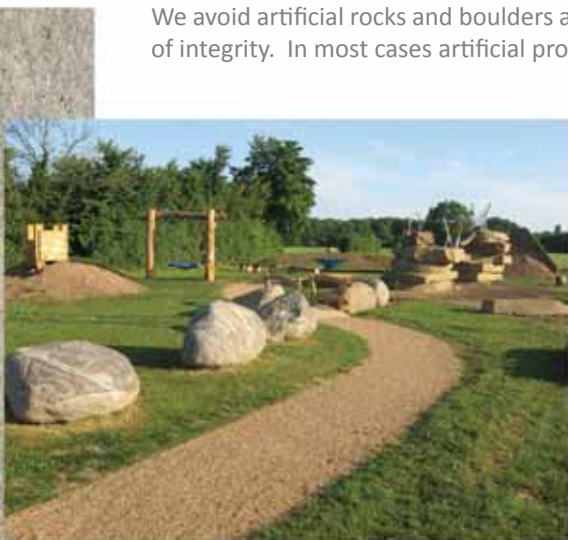
Create a dynamic and challenging play-scape with natural stone. Using natural stone for play will both inspire and encourage children to explore the adventurous and imaginative sides of their character.

Natural stone is real and unadulterated and children have an affinity for it. Perhaps this is why it does not tend to be subject to vandalism. In any case it is tough and durable. Furthermore it is not difficult to select stone that will fit and complement any natural or urban surroundings.

Play Boulders

We are proud to promote the use of our natural boulders in play scape areas. They are naturally slip resistant and encourage children to climb and explore, which is something all children love to do. Using these in the correct way will help children to develop and grow, and provide a natural beauty to play areas.

We avoid artificial rocks and boulders as children quickly pick up on the fact that they are not real and there is an implied lack of integrity. In most cases artificial products are more expensive and have a substantially shorter life span.



Skate Parks

Granite skate features can be created to suit any location, size and inspiration. If you are able to draw your ideas we are able to make them from a wide range of materials and colours.

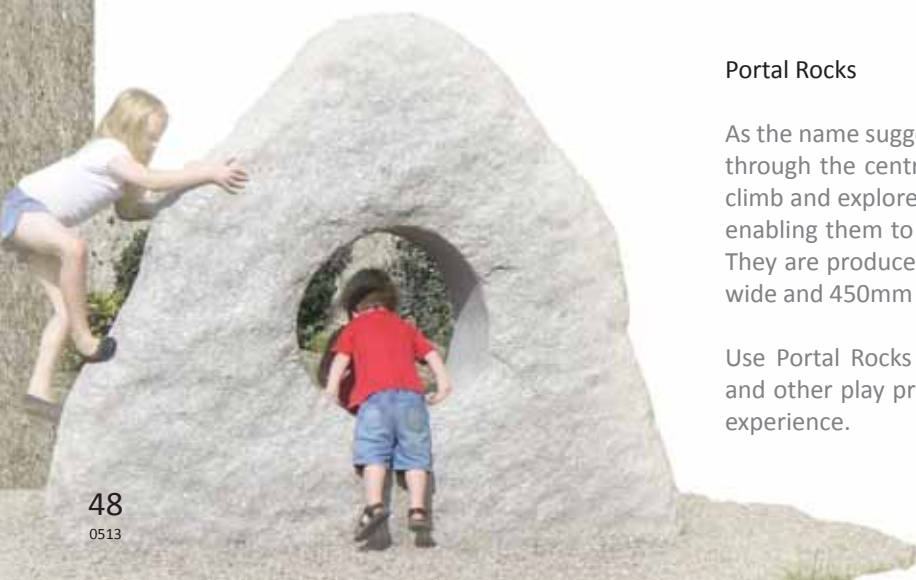
In Milton Keynes CED formed a partnership with SK8MK, a group formed by local skaters/BMXers and council members, to create a very original shared area as an official skate park. Granite blocks were used in different ways to create seating for the bus station, but also to be used by the skateboarders.



Portal Rocks

As the name suggests, Portal Rocks have a 600mm diameter hole drilled through the centre. They are slip resistant and encourage children to climb and explore. Free from sharp edges, they are tough and durable; enabling them to withstand high levels of use over the years to come. They are produced from granite and are approximately 1.5m tall, 1.5m wide and 450mm thick, although other variations can be made to order.

Use Portal Rocks singularly or combine them with our play boulders and other play products, they will provide a challenging and enjoyable experience.



Yorkstone Towers

Yorkstone Towers are an excellent example of a simple but challenging natural play feature. Yorkstone is slip resistant, very tough, free from sharp edges and able to withstand high levels of use over many years whilst remaining virtually maintenance free.

These climbing towers provide a challenging and enjoyable learning experience. The pieces are placed in a stack to ensure there is a free drop to the ground from each overhang and where appropriate, the landing can be softened using GravelSafe®.



When planning a play scape area and to view our products in play areas, we recommend you take guidance from “Design for Play: A guide to creating successful play spaces” as published by Play England and the DCSF. This publication is supported by: Cabe, the National Lottery (the big lottery fund) and The National Children’s Bureau and endorsed by the Health and Safety Executive and The Royal Society for the Prevention of Accidents.

GravelSafe®

CED’s GravelSafe® is the latest innovation in impact absorbing safety surfacing. Unlike typical pea gravels GravelSafe® is a well rounded multicoloured granite pebble that has no broken or sharp elements. The natural roundness of the product works almost like a liquid when faced with the impact of an object. The pebbles roll against each other thus creating exceptional impact absorbing properties in situations where children jump or fall from play equipment.

GravelSafe® conforms to BS EN 1176 (tested in accordance with BS EN 1177) for intended use as an impact absorbing safety surface.



Texture Chart

Good slip resistance is normally achieved by applying a texture to a previously sawn stone surface. These textures are designed to give good grip without causing any kind of trip hazard.

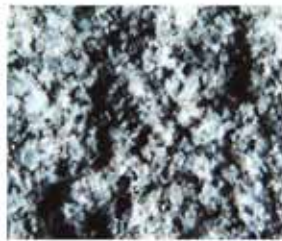
We hope the below selection of textures will assist you with your initial selection.

There are many methods used to add these textures. The most popular are flame texturing, achieved by running an acetylene torch over the surface of the stone and bush hammering, a process of pounding the top surface with a multi pointed hammer. Other potential finishes are shot blasting the surface with high speed particles of sand or metal, water jetting the surface by running high speed jets of water over the stone surface and brushing the surface by grinding a mechanical steel brush over the stone.

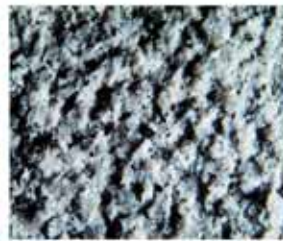
It is important to note that for certain situations or materials it might be that a combination of more than one finish will produce the best results.



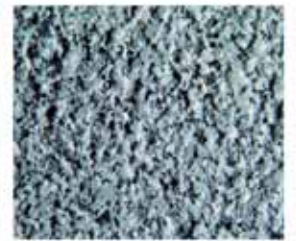
Cropped



Fair Picked



Bush Hammered



Flame Textured



Honed



Polished



Riven



Sawn



Chiselled



Blister tactile paving



Shot Sawn



Tactile - Corduroy



Tactile - Blister



Commercial

Specialising in the supply of natural stone products to bespoke hard landscaping projects across the UK. We welcome all enquiries, whether they are prestigious Town Centre Developments, specially designed features in Public areas or small private spaces.

We are always here to offer advice on the many varied aspects of your stone requirements. There are so many things to consider to ensure that your venture is a success.

Is the choice of type of stone the best one for the purpose?

Is the finish non-slip even when wet?

Is the stone strong enough to stand up to the stress of all the loadings it will be put under?

Do the colours used contrast well visually with other material colours on the site?

Where are the potential 'pitfalls' and how do you avoid them?



Most of our staff have been with us for many years and this experience and knowledge is there for you to draw on. We will be honest with you. If it cannot be produced the way you want or the delivery times you require are unrealistic we will tell you.

Please contact us to discuss your project needs and speak to our estimating team about prices. Ask us for advice on any technical queries you have or just call to find out what we can offer. We understand how important your project is to you and we will do all we can to help meet your aspirations.

commercial@ced.ltd.uk
01708 867237

Jubilee Gardens, London

The park which is situated right next to the London Eye, first appeared on the public radar in 1951 when it was the site of the Festival of Britain's prime building, the Dome of Discovery. The site later became a car park and remained so until 1977 when a temporary garden was laid out for the Queen's Silver Jubilee. Later the space was neglected and fell into disrepair.

The clients ambitious plan was to create a very special and unique new garden in time for it to form part of the 2012 Diamond Jubilee celebrations. Time did not allow for mistakes and quality checks were conducted at the Chinese factories to ensure size, colour, detail and finish were all checked and agreed by the design team.

The main project requirement was for several hundred metres of special silver grey bench planters with both honed and flame textured surfaces. The benches were multi-sized and specially shaped yet had to flow seamlessly from section to section. The complexity of achieving this with so many radius changes and a specified 3mm joint between sections proved very challenging. The bench sections forming the outside of the park also had to include sawn anti-skateboard groove details cut to the ends of each piece.

We also supplied several thousand square metres of silver grey cubes and setts to form the pathways. The setts were supplied as both special split and flame textured on the top surface and split on the sides. They needed to comply to very tight tolerance bands and the colour through the whole scheme needed to be very uniform.

We are proud to say we successfully supplied the granite to the exacting quality standards required achieving the necessary special details that have helped to make the Gardens such an attractive new London landmark. This really is an outstanding space for tourists and locals alike to visit and enjoy.

Work was completed on site in time for the gardens to form part of the 2012 Diamond Jubilee celebrations, some 35 years after the gardens were first created for the Silver Jubilee in 1977.



Contractor: Frosts Landscape Construction Ltd.
Designer: West 8 Urban Design and Landscape Architecture



Maidstone High Street

The High Street Public Realm Project in Maidstone aimed to improve how the High Street looks, feels and works. High quality natural stone surfaces laid across the pavements, the new public space and crossings were specified to attract shoppers and tourists alike, encouraging them to relax and spend time in the centre of Maidstone.

Contractor: Eurovia
Designer: Letts Wheeler

Our supply of the natural stone elements included a 4 colour sett mix sourced from both the North and South of China. Sawn sided, flame textured setts in red/brown, pink/grey, pink and silver grey in a mixed pattern with 3 different element sizes. There are over 3000m² of these setts - 75mm thick in the pedestrian and pavement areas and 180mm thick at the crossings. The kerbs are silver grey in both flame textured and "pineapple" finishes to give contrast. There are also black basalt bands laid as channels to provide borders and giving distinction between the different areas. The blister paving is a mid grey colour and elements have been produced in the size of setts 125mm wide x 195mm long. These are of course laid at the crossing points.

The main features are created by large multi-section benches in both mid grey and silver grey granite. The finish varies along the benches with polished and honed surfaces most prevalent. The benches vary in height along their length and have been laid in "L" shapes. They are proving very popular amongst the public and are already being put to regular use. There are also black basalt bollards positioned to control traffic flow.

The completed scheme sees less road space given over to vehicles. These changes have freed up large areas to create wider pavements and a new public square outside the Town Hall.

We will be supplying a further phase of this development over the summer of 2013.



Clink Street, London

In May 2011, Giles Heap was contacted by the Landscape Architects, Witherford Watson Mann, who asked if he would assist in the specification of the repaving of a number of streets around the Southbank area of London. When Giles found out which streets were being looked at, he realised that CED had already supplied setts there...almost 20 years before. Was this serendipity?

The brief from WWM, Southwark Council and English Heritage was simple. Make it old, make it smooth and make it look like it fits, but it soon became apparent that to fulfil all the constraints of colour, size, finish and technical ability to suit a busy, tourist-focused route through the heart of London's Shad Thames area of the Southbank, a little thought and inspiration was required.

Following extensive analysis on site, it was discovered that the existing setts were, in general, slightly narrower than the more common and traditional size of 4" wide, so not only did the colours of any new setts need to match as closely as possible to those granites that were previously and (in some cases) historically used on site, but the sizes needed to be bespoke as well. To add to the difficulties in specifying the stone types for this scheme, it also became apparent during various discussions that the scheme had to be able to take potentially quite high levels of vehicular traffic. This meant that we had to carefully consider the guidance from BS7533 and the use of proprietary mortars so, following a traffic survey by the council and some exploratory holes dug to ascertain the existing sub-bases, a technically sound compromise of width vs depth was found. Once we had this, we were able to consider the technical attributes of various granites and eventually a mixture of five specifically chosen colours of granite, 90mm wide by 150mm thick, in five different lengths and with roughened edges was decided upon. Work finally commenced in January 2012.



As this area of London's Southbank was one of the main likely through-routes for pedestrians wanting to see the Olympics 2012 Torch Relay, the whole scheme had to be finished by the end of March. Due to the tight working conditions expected on site and because construction had to be completed while the roads were still accessible to the general public, CED also arranged to supply all the setts pre-mixed in crates to a specific ratio of colours and sizes prior to delivery. This reduced the amount of space required on site at any one time and thus the disruption to the general public.



The changes made to this most historic part of Old London have transformed the area from an accessibility nightmare, in to what is now a welcoming, attractive walkway, running past some of London's most famous landmarks, from The Golden Hind, past the ruins of Winchester Palace and The Clink Prison, right through to Shakespeare's The Globe Theatre. CED are very proud to have yet again played a part in London's future history.

Contractor: FM Conway
Designer: WWM Architects



Springside, Edinburgh

CED is delighted to have successfully supplied the natural stone landscaping materials for this prestigious project. Springside is a new neighbourhood in central Edinburgh with 600 new homes, 140,000 sq ft of office space, shops and facilities set in an eight-acre landscape of parks and open spaces. Located in Fountainbridge, half a mile west of Edinburgh Castle, its name comes from the springs that used to rise in this area.

The main landscape spaces are made up of almost 5000m² in a 3-colour mix of Chinese fine picked and flame textured basalt and granite setts; black, mid-blue grey and silver grey. The contrasting colours work very well and set the tone for a very attractive and relaxing landscape around the buildings. There are also approximately 2500 linear metres of silver grey kerbs and channels in a variety of styles and sizes as well as upwards of 3000m² of cubes with a split surface finish supplied from Portugal.

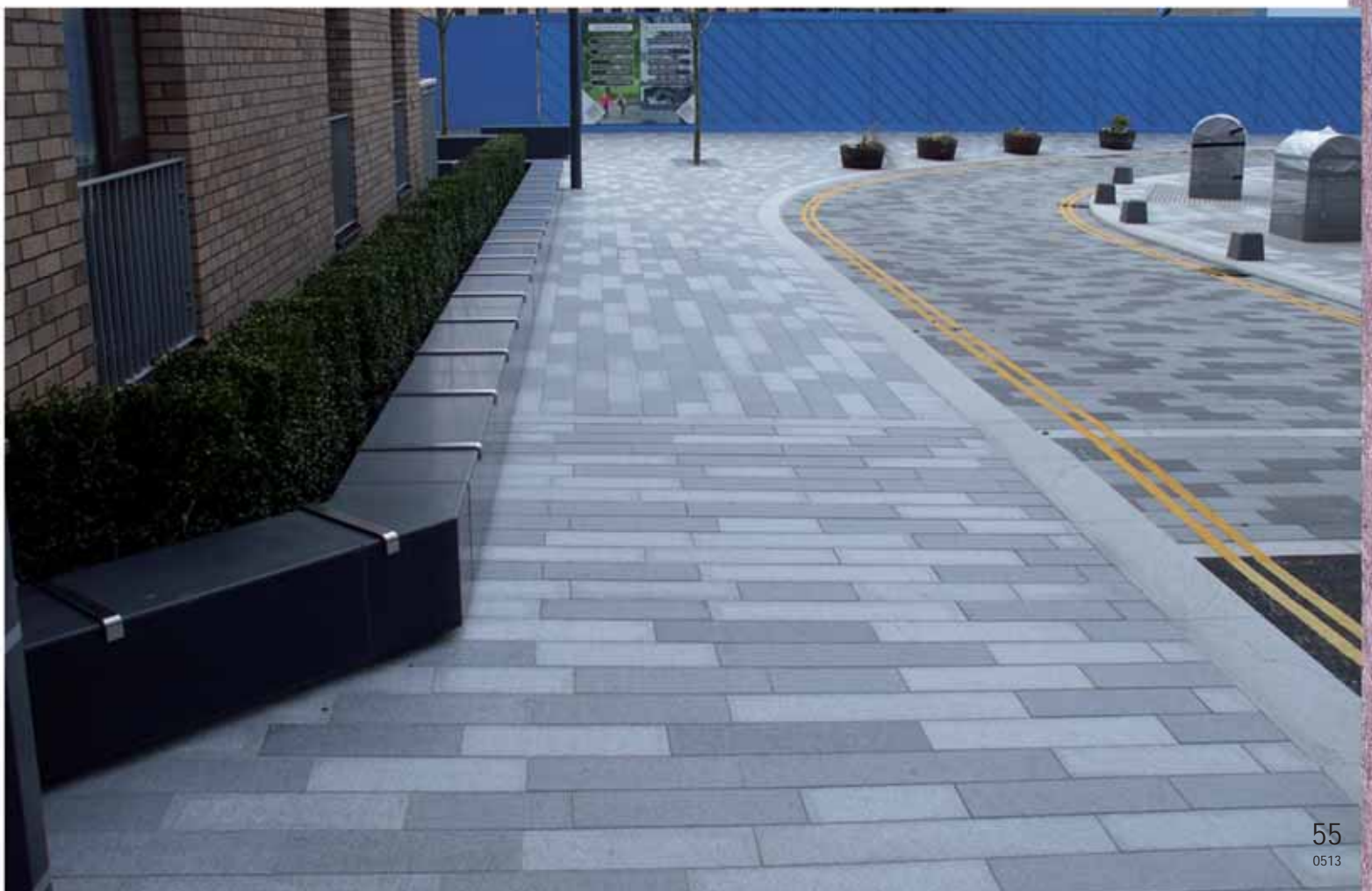


The most complicated sections are the copings with changes in levels and direction necessitating that more than 200 different shapes were produced. Strict factory quality control procedures were needed to produce the required detail correctly. Accuracy of the production was crucial and better than normal tolerances were achieved. Within the different shapes there are well over 1000 pieces of the coping in highly polished black basalt, with around 100 pieces in honed silver grey granite.

Special step units in flame textured mid-grey granite include black basalt visibility inserts fitted at the factory. Special ribbed and tactile sections again in black were produced to a very high quality finish and are in position at road edges and around the step areas.

Other items supplied include fine picked bollards, polished cladding and black basalt benches. This is a very well thought out scheme, which has produced spectacular results, in terms of both its excellent functionality and attractive appearance.

Contractor: Premier One Ltd.
Designer: EDAW Architects



Barnes Park, Sunderland

This large and very beautiful park was bequeathed to the people of Sunderland in 1909 but was needing some attention. Some sensitive improvements have greatly improved both the accessibility and the visitor experience.

CED collaborated with Sunderland Council from an early stage, in order to achieve a top class result within the limits of the available finance. This is the sort of situation in which CED excel, where there is flexibility to adjust the design to make the very best use of the materials and resources available.

The park is extensive but with special areas. In between, the paths are simple tarmac but needed an edging in keeping with the original Victorian layout. The client was surprised to discover that the simple pin kerbs, just 50mm wide with a rounded top were far cheaper in granite than in any man made equivalent. The cafe forecourt was paved in Italian porphyry, always an appropriate material in places where there will be spillage of wine, coke, coffee and food. It is not just a matter of having a low water absorption but, where there is likely to be dirt and staining, the multitude of rich tones hide the dirt there is. Quite simply, the dirt hardly shows at all.



Improving the main entrance was a priority not just to look the part but to signify to passers-by the beauty that could be found within. Hence the use of granite setts for the roadway together with “wheelers” set at the width of a cart’s wheels. The Temple setts are flat and easy to walk on while looking as though they have been in place for years. With the repaired gateway and the surrounding porphyry paving, the change was spectacular.



Several areas of the park gained additional features to increase the enjoyment of young children to which the variety of boulders and paving contributed significantly. But money was quite tight and there was still the need to create a great staircase in the woods to link the two levels together. Not long before, CED had bought about 1000m of steps from the entrance to Broadgate, in the City of London, when that entrance was reconstructed. All in a delightful green granite, originally from Norway, By designing around the size and quantity of material available, the steps could be built without any significant cutting with a material that would be totally appropriate in a parkland setting and which would remain free of lichens and algae and so stay slip resistant. The council were so pleased with the product that they bought all that was available and used the remainder for the seaside steps in the first part of the Roker seafront improvements.

Contractor: Brambledown Landscapes
Designer: Sunderland Council

Southend Victoria Gateway and City Beach

Southend Victoria station sees large numbers of commuters coming to work in the offices nearby and, at weekends, many visitors come for a day out at the seaside.



In front of the station, the traffic flows have been modified with much improved pedestrian and cycle linkages to the Town Centre, the visitor experience has been revolutionised and the pretty station has been treated most sensitively. The granite paving colours are gentle grey-pinks of many types, elegantly complementing the Victorian red-brick station buildings.

The scheme is necessarily designed to allow the efficient flow of people and traffic, all on the one level. By the station itself, surfaces are shared between pedestrians, buses and taxis, only the principal carriageways remain tarmac, although with the minimum of line marking. Where the road is crossed, red-grey 150mm cube setts provide a clear indication to all that pedestrians are a priority. Because of the high volume of buses, these areas are constructed in accordance with BS 7533 part 10 with Steintec mortars and this includes special detailing where the setts meet tarmac to ensure the setts receive the necessary lateral support. At the ends of rows, extra long setts have been utilised to avoid having to use small pieces. It is better technically and looks so much more elegant as well.

All the tactile paving is in granite, both long-lasting and not at all intrusive visually. There are a few bench seats with generous roundings so they will not be damaged by skateboarders and the simple attractive lighting makes the space feel clean, safe and welcoming.



Down by the beach this great water feature is hugely popular. Now two years after its opening, all remains in good order, testament to the quality of the design, the stone and the installation.

The local council has used the DFT funding to great advantage with the improvements to these areas.

Southend Victoria Gateway

Contractor: Carillion plc.

Designer: Chris Blandford Associates

Southend City Beach

Contractor: Carillion plc.

Designer: Grontmij

Special Pieces and Interesting Features

As a stone specialist, we are able to utilise the latest CAD technology with our highly skilled professionals to make any design a reality.

Provide us with anything from an idea or a simple sketch to a finished technical drawing and we will take care of everything else. We will help you choose the right material to suit your design and show you how to achieve the best from your ideas using natural stone.

Special shaped blue grey granite sections from France were specially designed to create this magnificent monument. We met the logistical challenge of transporting such large sections safely and in good time to site.



The mirror pool is one large area of high quality and durable granite setts. This is transformed into several individual pools when the water fountains burst into life.



A mix of many colours, of new granites, were worked by hand to create the effect of a worn pathway that could have been walked on for years.



This space has been transformed from dark and dilapidated to colourful, fresh and vibrant. Using a clever colour mix of high quality granite setts and yorkstone paving the courtyard now has a contemporary and modern feel while still reflecting the historic setting.



Irish blue limestone benches provide a calming place to sit and relax for local workers during the day. At night the area comes to life with special lighting effects reflecting the beauty of the benches.



Yellow granite is most impressive with its natural colour variation. It is speckled in appearance with natural bands of grey and brown running through the yellow, giving a warm and natural finish to modern contemporary projects.



Black basalt benches, crafted in China, with polished tops and honed sides. Further production was carried out in Scotland where the benches were sandblasted and inscribed with gold braided lettering.



British Stone Paving

British Stone Paving is now delightfully displayed in a wonderful and permanent path created at the HQ of the British Geological Survey (BGS) located at Keyworth, near Nottingham. Every type of UK paving can be seen, not every individual quarry but every category with current production.

The Geological Walk covers 1200m² and includes pavings that are representative of every period from the Precambrian to the Quaternary. Most periods and geological types could be supplied from current production, though some had to be produced specially. The importance of this path is such that we have devoted a section of our website www.ced.ltd.uk/stone-paving-pathway to this scheme, detailing and displaying photographs of every material used.

Elsewhere in this brochure we have shown several British York stones, whether sawn, riven or reclaimed. On the page opposite we are showing a further selection of the British stones in regular production, stones which are competent for paving in particular. Stone has to be tough to function effectively as paving and these do. They can be used in both gardens and public spaces and deserve a wider audience. You can see, just from the photograph of the entrance to the BGS, itself some 500m², that there are materials here that can form a striking and, also, beautiful space.

The British stone industry as a whole gave us great support to enable the construction of this path and the British

Geological Survey now allow us to take visitors around. If you are interested in seeing the path for yourself, do please contact our Midlands depot which is located not far away, by email at midlands.depot@ced.ltd.uk or by telephone 01773 769916 to make the arrangements. And, as there are around 40 different materials in this path, please do contact us to check availability before specifying them.



Contractor:
Kier Construction

Landscape Architect:
Munro + Whitten



Heather Slate



Green Slate



Sliced Glacial Boulders



Cornish Slate Bench, Caithness Flagstone & Red Sandstone



Purbeck Limestone



Scottish Buff Pink and Light Buff Sandstones



Grey Cornish Slate



Buff Grey Yorkstone with Cornish Granite Steps

Acknowledgements

We would like to thank all those involved who contributed in the production of this brochure. The high content of photos we have been able to include is thanks to those listed below. If we have missed anyone from the list please get in touch and tell us so. If you would like your job or photos to feature in the next issue please get in touch with the marketing team on 01708 867237 or email marketing@ced.ltd.uk

21st Century Group
22 Over 7 Architects
ABS
Adam White
Afan Landscapes
Alan Carvosso
Andrew Wenham
Andy Sturgeon Landscape and Garden Design
Anthony Jellard Associates
Apex Landscapes
Arun Landscapes
AT Knott and Sons
Barney Curren
BDP
Ben McKee Landscapes
Beth Moore Designs
Birse
Brambledown Landscapes
Broadway and Malyan
Calum Stirling
Carillion plc.
Caroline Neil
Castle Paving
Chris Blandford Associates
Churchman Landscape Architects
Cloone Landscapes
Dave Collins Paving
Ecology Design Ltd.
EDAW Architects
Elliston Steady and Hawes
Eurovia
FM Conway
Frosts Landscape Construction
Gillespies
Globe Management
Grontmij
Hanna Olin
Helen Thomas Garden Design
Ian Barker Garden Design
James Aldridge
John Charles Landscapes
Julie Toll Landscape and Garden Design
Kenny Crawford
Kier Construction
Kingfisher Groundworks

Letts Wheeler
Majestic Trees
Mansfield District Council
Maurice Maxwell Garden Designs
May Contractors
May Gurney
Mazandi Design
Midas Touch Landscapes
Miletree Construction
Milton Keynes Council
MLM
Mr and Mrs Offord
Munro + Whitten
New Eden Landscapes
North Midland Construction Ltd.
Oakview Landscapes
Parkstone Construction
Paul Crowther
PG Oxley
PJ Landscapes
Place Design
Planit EDC Ltd.
Premier One Ltd.
Regent Driveways
RHS Hyde Hall
Robert Myers Associates
Rupert Farnsworth
Sam Sayres
Sienna Earth Ltd.
SK8MK
Spring Landscapes
Stock Construction
Sunderland Council
The Garden Company Ltd.
The Perfumed Garden
Tom Hart-Dyke
Townsend Landscape Architects
Ustigate
Volker Stevin Ltd.
West 8 Urban Design
Whitehorse Stone
White Young Green Planning and Design
Willerby Landscapes
Woodview Landscapes
WWM Architects



This brochure was printed by an ISO14001:2004 accredited company.

Contact

We keep extensive stocks at our five depots, strategically located throughout the UK. All the depots have internal or external show areas where our products are displayed in situ. Visitors are always welcome and our staff will be delighted to show you around. No appointment is necessary and all our depots are open from 8am to 5pm Monday to Friday.

South East, Commercial and Head Office

728 London Road, West Thurrock, Grays, Essex, RM20 3LU
(For satellite navigation please use RM20 3NL)

Tel: 01708 867237
Fax: 01708 867230
Email: sales@ced.ltd.uk

Thames Valley

Trout Road, West Drayton, Middlesex UB7 7RS

Tel: 01895 422411
Fax: 01895 420910
Email: westdrayton@ced.ltd.uk

Midlands

Unit 4 Langley Park Industrial Estate, North Street, Langley Mill, Nottinghamshire NG16 4BS

Tel: 01773 769916
Fax: 01773 530441
Email: langleymill@ced.ltd.uk

Scotland

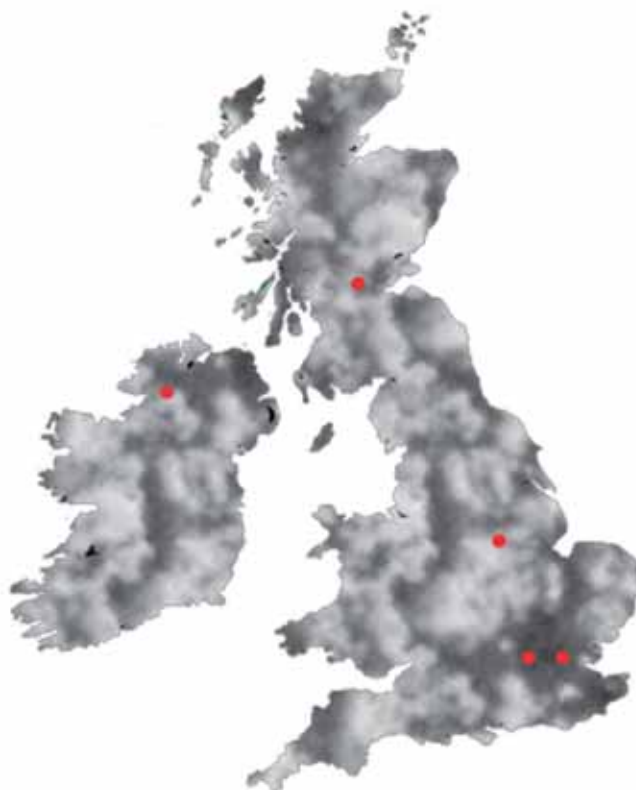
Castlecary Depot, Allandale, By Bonnybridge, Falkirk FK4 2HJ

Tel: 01324 841321
Fax: 01324 841456
Email: castlecary@ced.ltd.uk

Ireland

1B Connaghty Road, off Rash Road, Omagh, N Ireland BT78 5NN

Tel: 02882 258457
Fax: 02882 241028
Email: irelandenq@ced.ltd.uk



Can't find what you're looking for?

CED's resource team is available to help you with any unusual, difficult or technically challenging enquiries you have.

Tel: 01708 867237
Email: resources@ced.ltd.uk

