

2014

CHARCON
Commercial landscaping portfolio

NATURAL STONE, FLAG PAVING, BLOCK PAVING, KERBS AND SURFACE WATER SOLUTIONS

AN OVERVIEW

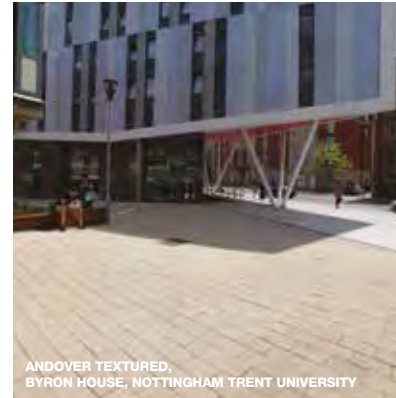
AGGREGATE INDUSTRIES IS A MAJOR MANUFACTURER AND SUPPLIER OF CONSTRUCTION MATERIALS. OUR CHARCON RANGE OF HARD LANDSCAPING OFFERS THE INDUSTRY COMPLETE COMMERCIAL SOLUTIONS FOR ALL TYPES OF PROJECT.

Our focus is firmly on the commercial sector, providing high quality, innovative, and integrated solutions to architects, civil engineers, landscape professionals, housebuilders and contractors in almost every aspect of the construction industry.

Our Charcon product range provides all the necessary materials to furnish a hard landscaping scheme, from large public realm projects to educational and health facilities, delivering projects from concept to completion as a supply partner. Furthermore, we have unrivalled access to the highest quality raw materials, concrete technology and research teams. This expertise is constantly being channelled into developing new, innovative products in flag paving, block paving, kerbing and drainage solutions.

Delivering value in construction materials and services

We see our goal as not only the provision of the highest quality and most sustainable materials, but also through working closely with our customers, clients and others in the supply chain to find the best solution. By continually developing new techniques, production processes and delivery solutions, we are able to offer our clients the highest quality and most appropriate products at the best value and commercially attractive prices.



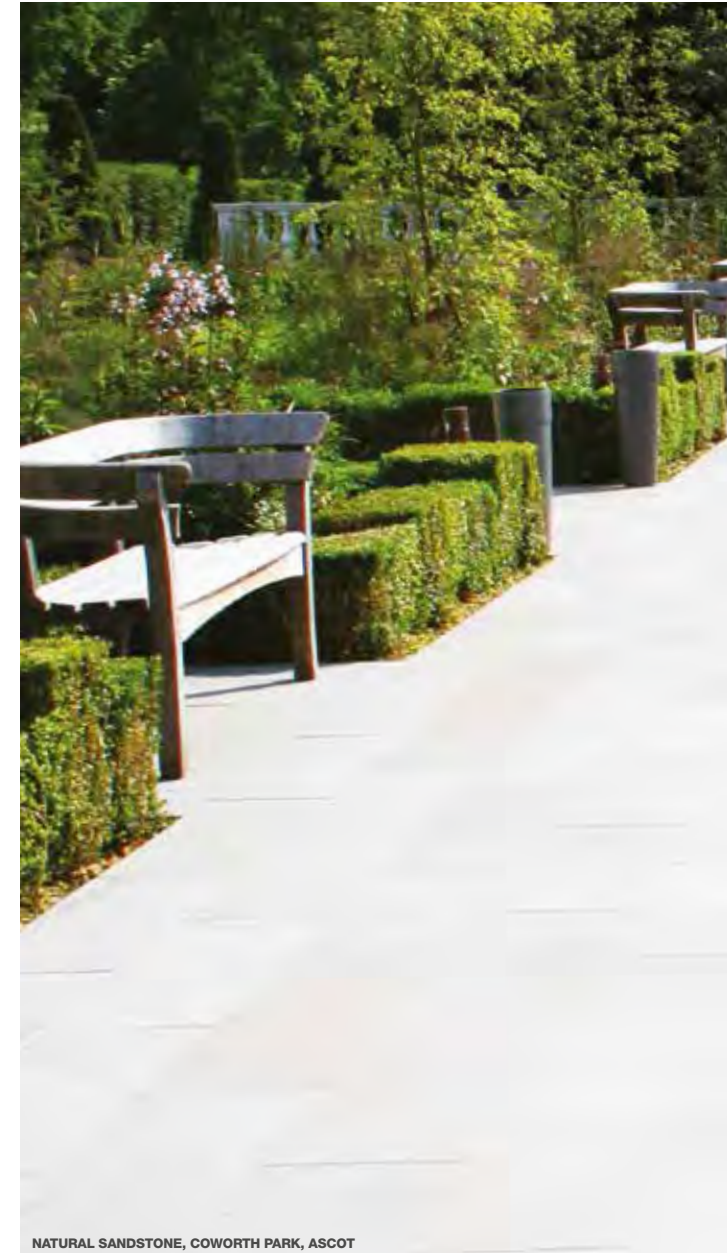
ANDOVER TEXTURED, BYRON HOUSE, NOTTINGHAM TRENT UNIVERSITY



COURTSTONE CHARCOAL, CAERNARFON



ANDOVER SILVER GREY, ASHLEY COLLEGE, BRISTOL



NATURAL SANDSTONE, COWORTH PARK, ASCOT

COMMERCIAL LANDSCAPING





“WE CHOSE THE CHARCON RANGE BECAUSE OF THEIR RELIABILITY AS A SUPPLIER, BOTH IN TERMS OF QUALITY AND DELIVERY. THEIR ASSISTANCE, BOTH AT DESIGN AND CONSTRUCTION STAGE, IS VERY VALUABLE IN DELIVERING A SUCCESSFUL SCHEME AS THE ONE IN COWORTH PARK.”

Cristina Refolo
Landscape Architect CMLI

PRO-ACTIVE RESPONSIBILITY

AS A MAJOR SUPPLIER OF LANDSCAPING MATERIALS TO THE CONSTRUCTION INDUSTRY WE UNDERSTAND THE IMPACT OUR PRODUCTS HAVE ON PEOPLE, THE ENVIRONMENT AND THE ECONOMY.

All that we build today creates a legacy for the future. Our materials will be part of the built environment for decades, if not centuries, to come. We offer a range of sustainable landscaping materials and systems as well as continually assessing our raw material consumption and manufacturing processes to reduce our environmental impact.

The Responsible Source™

Aggregate Industries has been working for more than a decade to create sustainable solutions for our core markets. We have been addressing issues such as health and safety, quality, ethical trading, carbon and water management, biodiversity and social responsibility so that we can offer our customers truly sustainable solutions.

This work has culminated in us becoming the first company in the world to be certified to BES 6001, Framework for the Responsible Sourcing of Construction Products, by the Building Research Establishment (BRE).

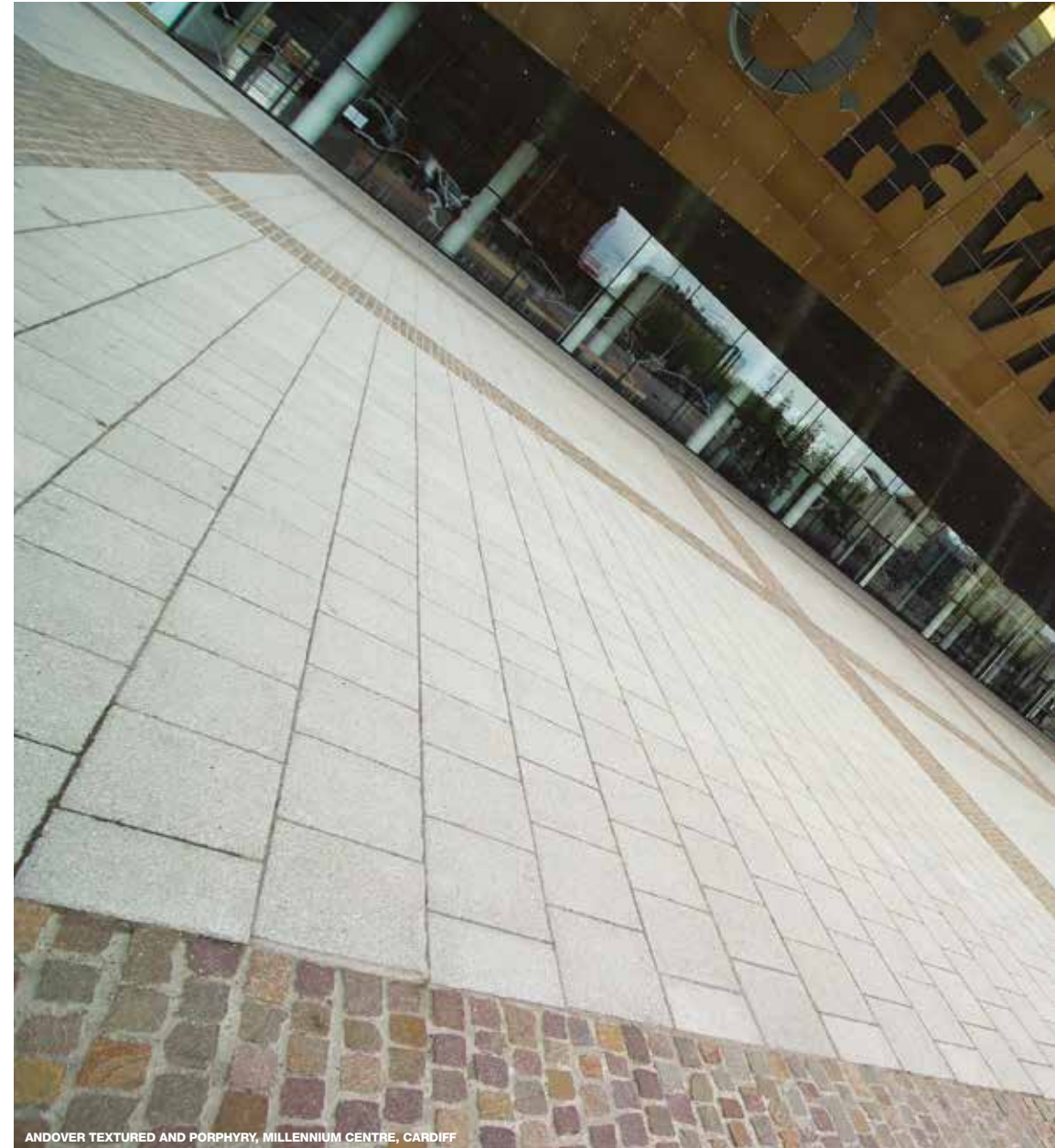
All Aggregate Industries' UK manufactured products have a certificated minimum rating of VERY GOOD under the BES 6001 standard.

Ethical trading

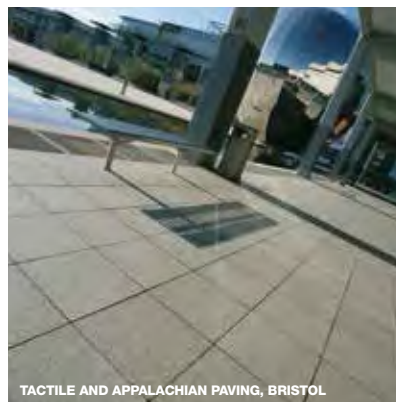
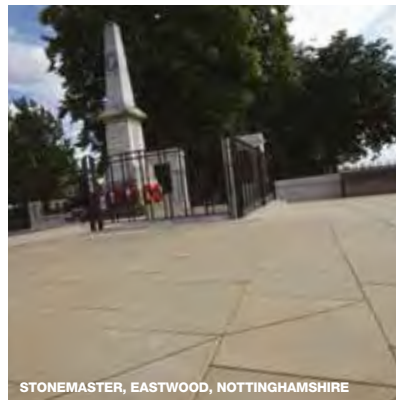
We are working hard to fulfil our ethical obligations when trading with other nations, and to comply with local laws and internationally recognised standards. As a group, we support the principles of the UN Global Compact and ETI base code. This is reflected in our policy and code of practice which aims to ensure that we, together with our suppliers, fulfil our obligations and responsibilities in order to maintain long-term benefits to all parties.

Examples of the criteria our suppliers have to meet are:

- Prohibition of child labour
- Provision of safe workplace
- Provision of all employment rights
- Prohibition of bonded or forced labour
- Paying wages that meet or exceed national legal requirements.



ANDOVER TEXTURED AND PORPHYRY, MILLENNIUM CENTRE, CARDIFF



Life®

WE HAVE INTRODUCED **LIFE** TO CLEARLY IDENTIFY OUR SUSTAINABLE PRODUCTS AND SERVICES, MAKING IT EASIER FOR SPECIFIERS TO UNDERSTAND AND USE THEM. THIS IS THE FIRST TIME A CONSTRUCTION SUPPLIER HAS GATHERED TOGETHER ALL ITS SUSTAINABLE PRODUCTS AND SOLUTIONS UNDER ONE SIMPLE AND UNDERSTANDABLE BRAND.

Life doesn't just set a precedent, it also sets a standard. Each of the solutions that carry the Life logo meet or exceed at least one of the three benchmarks that we have set in the key areas of:

CARBON REDUCTION

Must reduce carbon in manufacture or in use by at least 20%.

NON-PRIMARY MATERIAL CONTENT

Must contain a minimum of 45% non-primary material based on the entire product mix.

WATER TREATMENT OR MANAGEMENT WITHIN A SUDS SOLUTION

The management of the quality and quantity of water within a Sustainable Drainage System.

50%* reduction in CO₂

45%* non-primary materials

Sustainable Drainage Systems

www.aggregate.com/life

Look for the Life symbol throughout this portfolio that identifies our most sustainable product solutions.

SERVICE AND COMMITMENT

WE MAKE IT OUR MISSION TO MANUFACTURE AND SUPPLY HIGH QUALITY MATERIALS, ON SPEC, ON TIME AND ON BUDGET TO OUR CUSTOMERS, OFFERING A FULL DESIGN AND SUPPORT SERVICE FROM CONCEPT TO COMPLETION.

Aggregate Industries offers nothing but the highest quality products and services to clients. We thrive on solving the complex needs that come with each unique and individual project and we are 100% committed to the success of our customers, making sure every project is delivered on time and to budget.

First for quality

All products manufactured by Aggregate Industries are produced in accordance with BS EN ISO 9001:2008 with factory compliance to BS EN ISO 14001. Our products also conform to applicable European harmonised standards for CE marking.

First for product innovation

We appreciate that, despite our comprehensive range, some schemes have challenges that can only be met with bespoke products. This is one of the areas in which we excel and have a history of working with clients to produce products to their individual specification and design.

First for design service

Our dedicated team, made up of expert architects, engineers and technicians are on hand to help support clients throughout the project cycle. Our services include:

- Free comprehensive samples service
- Free design advice
- CAD drawings
- Take-off schedules
- NBS details
- Installation advice.

Our website also contains comprehensive technical data sheets on each product, available to download at your desktop.

First for knowledge

We also offer a range of informative RIBA accredited Continued Professional Development (CPD) seminars that can be delivered at client practices around their working commitments.

Please call 01335 372222 for further information.



ANDOVER TEXTURED, BYRON HOUSE, NOTTINGHAM TRENT UNIVERSITY



A GUIDE TO THE SYMBOLS

WE HAVE PLACED THE FOLLOWING SYMBOLS ON EACH PRODUCT PAGE TO HELP YOU QUICKLY IDENTIFY THE KEY FEATURES OF OUR PRODUCTS.



BES 6001
Indicates a responsible source accredited product.



ETHICAL TRADING
Indicates an ethically traded product.



DURABILITY
Indicates a product that has been engineered with increased durability.



LIFE
Our range of key sustainable products and services.



CBPP
Indicates a product that is available as a Concrete Block Permeable Paver (CBPP).



STEP
Indicates a product that is available in step units.



NBS
Indicates that National Building Specification details can be supplied with this product.

NATURAL STONE

PAGE 10-45

CAPABILITY.

SPECIALS.

UK STONE: YORKSTONE | WELSH SLATE | CAITHNESS | IRISH GRANITE.

EUROPEAN STONE: PORTUGUESE GRANITE | PORPHYRY.

WORLD STONE: SANDSTONE | GRANITE.

CONCRETE PAVING

PAGE 46-83

ECO RANGE: ECOPAVE® GROUND | ECOPAVE® TEXTURED.

WASHED PAVING: STONEMASTER® | ANDOVER WASHED.

TEXTURED PAVING: ANDOVER TEXTURED | ULTRAPAVE | MOORDALE® | ACADEMY | NIGHTEC.

GROUND PAVING: APPALACHIAN® | MOORDALE® | MIANOVA.

RUMBLED PAVING: COUNTRYSETTS | WOBURN RUMBLED.

CAST PAVING: WOBURN ORIGINAL | EUROPA | INFILTA.

PROFILED PAVING: COURTSTONE® | GRASSGRID | ELITE | BRITISH STANDARD FLAG | TACTILE PAVING.

KERBS

PAGE 84-97

ECOKERB® | COUNTRYSIDE CLASSIC® | K-LITE® TRADITIONAL | CAIRNHILL® | BLOCK | ACCESS
HGV | BRITISH STANDARD KERBS | EDGING | DURAKERB.

SURFACE WATER SOLUTIONS

PAGE 98-103

LINEAR DRAINAGE: HIGHWAY | MINI HIGHWAY | HYDROKERB® | CLEARWAY | SAFETICURB.

PRODUCT DATA

PAGE 104-116





• THE LIVING ROOM •
www.thelivingroom.co.uk

COMMERCIAL LANDSCAPING

BRISTOL HARBOURSIDE, ANDOVER TEXTURED, SILVER FLECK





NATURAL STONE

14-16 CAPABILITY

17 SPECIALS

UK NATURAL STONE

22-23 YORKSTONE

24-25 WELSH SLATE

28-29 CAITHNESS STONE

EUROPEAN NATURAL STONE

30-31 IRISH GRANITE

32-33 PORTUGUESE GRANITE

36-37 PORPHYRY

WORLD NATURAL STONE

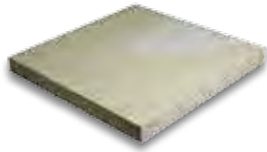
38-39 SANDSTONE

40-45 GRANITE



QUICK PRODUCT GUIDE

YORKSTONE



COLOURS

Hunters Hill
Willow Buff
Sandy Buff

FINISHES

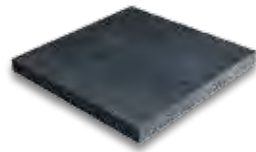
Flamed (Hunters Hill) and
diamond sawn

PAGE

22-23



WELSH SLATE



COLOURS

Welsh Slate Heather Blue
Welsh Slate Dark Blue Grey
Welsh Slate Heather Grey
Welsh Slate Mix

FINISHES

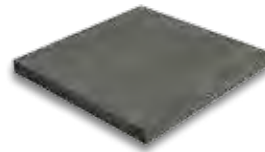
Natural split to top and bottom,
sawn sides

PAGE

24-25



CAITHNESS STONE



COLOURS

Caithness Riven

FINISHES

Natural split to top and bottom,
sawn sides

PAGE

28-29



IRISH GRANITE



COLOURS

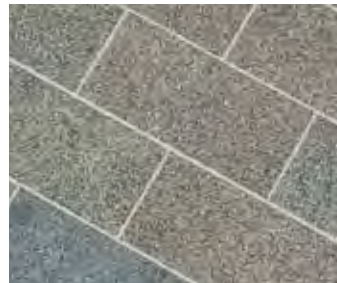
Bally Magrehan
Newry
Mourne

FINISHES

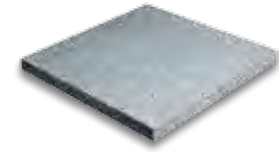
Fine picked and flamed

PAGE

30-31



PORTUGUESE GRANITE



COLOURS

Portuguese Light Silver Grey
Portuguese Dark Silver Grey
Portuguese Pink
Portuguese Red
Portuguese Yellow

FINISHES

Fine picked and flamed

PAGE

32-33



PORPHYRY



COLOURS

Brown Grey mix
Purple mix
Full mix

FINISHES

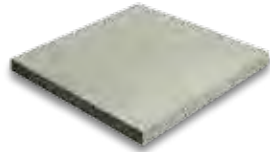
Cropped or split

PAGE

36-37



SANDSTONE



COLOURS

Buff
Green
Dark Grey
Buff Multi
Red

FINISHES

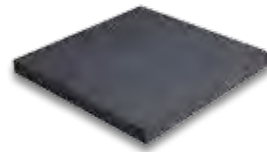
Sawn

PAGE

38-39



GRANITE FLAGS



COLOURS

Silver Grey
Dark Grey
Mid Grey
Pink
Grey Green
Beige
Yellow
Black
Fine White

FINISHES

Fine picked and flamed

PAGE

40



GRANITE SETTS



COLOURS

Silver Grey
Dark Grey
Mid Grey
Pink
Grey Green
Beige
Yellow
Black
Fine White

FINISHES

Fine picked and flamed

PAGE

41



GRANITE KERBS



COLOURS

Silver Grey
Dark Grey
Mid Grey
Pink
Grey Green
Beige
Yellow
Black
Fine White

FINISHES

Fine picked and flamed

PAGE

42



CAPABILITY

AGGREGATE INDUSTRIES HAS THE ABILITY TO SOURCE, PROCESS AND SUPPLY A WIDE RANGE OF BEAUTIFUL NATURAL STONES IN A WIDE VARIETY OF TYPES AND FINISHES. CALLING ON THE EXPERTISE OF OUR EXPERIENCED TEAM, WE OFFER OUR CLIENTS COMPLETE RELIABILITY IN SOURCING AND DELIVERING STONE SOLUTIONS TO THEIR PROJECTS.

Flexible

We offer one of the widest ranges of complementary natural stone and concrete hard landscaping portfolios in the market.

Capable

With an extensive catalogue of successful, high profile projects completed, we can help make sure that your scheme is supplied with the optimum solution of stones, expertly balancing technical and aesthetic requirements with best value.

Technologically advanced

We consider it very important to continually invest in new technology to create consistency in quality and supply for our customers. This includes the latest processing and CNC machinery, increasing efficiency and flexibility.

Committed

We appreciate that projects need to be managed effectively and dedicate sufficient expert resource to help deliver projects from design and detailing through to supply and completion.





AS A LEADING SUPPLIER TO THE INDUSTRY WE CONSIDER THE QUALITY OF OUR NATURAL STONE PRODUCTS PARAMOUNT AND PLACE GREAT FOCUS ON MAINTAINING THE HIGH STANDARDS WE HAVE ESTABLISHED.

Accountable

All of our natural stone products meet or exceed the relevant BS/EN standards. The full technical properties of each of our stones is available for download at www.aggregate.com/landscaping

Assured

Employing the services of SGS, a world recognised quality assurance company, our imported products are checked prior to shipping at manufacture or pre-containerisation stage. The rigorous quality control system includes:

- Quality of raw material
- Colour
- Stone defects
- Size and tolerances against approved drawing specifications
- Quantity
- Packaging.

CAPABILITY

WITH NATURAL STONE RESERVES ACROSS THE WORLD, NUMEROUS STOCK LOCATIONS IN THE UK AND A RELIABLE DELIVERY NETWORK FOR DELIVERY TO SITE, OUR CLIENTS CAN TRUST IN THE AVAILABILITY AND RELIABILITY OF OUR OUTSTANDING NATURAL STONE OFFER.

Resourceful

We enjoy established and long-term relationships with all our suppliers to ensure confidence in quality and guaranteed consistent supply of products.

Deliverable

Working with established logistic partners, we have real-time trackable delivery technology to ensure materials are delivered to site on time. If required we can freight products into almost any port in the UK to best suit project location and supply requirements.

Responsive

Owning a number of stock locations across the UK for ease of local and timely delivery, we generally stock Yorkstone paving, Granite setts, kerbs and other specials to meet the needs of demanding project schedules. Stock levels are constantly maintained and replenished to ensure lead times are kept to a minimum.





UK YORKSTONE TACTILE PAVING, BOLTON



BESPOKE SEATING AND BENCHES, OLD MARKET SQUARE, NOTTINGHAM



SPECIAL ENGRAVED GRANITE, LEICESTER



SPHERICAL GRANITE ROUNDABOUT, NEWMARKET, SUFFOLK

SPECIALS

AGGREGATE INDUSTRIES DESIGNS AND SUPPLIES HIGH QUALITY BESPOKE SOLUTIONS IN ANY STONE TYPE TO COMPLEMENT OR CONTRAST OUR COMPREHENSIVE RANGE OF HARD LANDSCAPING SOLUTIONS. OUR EXTENSIVE AND PROVEN EXPERIENCE COMBINED WITH OUR FULL DESIGN AND DETAIL SERVICE GIVES US THE ABILITY TO PRODUCE ALMOST ANY PURPOSE MADE SPECIAL.

With a full design and detail service available, including utilisation of CAD, Charcon has the capability to provide a comprehensive range of specials. From radial paving to street furniture such as bollards, seats, benches, spheres and other special features. From steps and treads both in straights and curved sections with visibility strips, if required, to bespoke inscriptions, signage and engraved features – trust Charcon to meet your specialist requirements. Products are available in all stone types and we also offer a full tactile paving range.

NATURAL STONE





CASE STUDY: HEATHROW AIRPORT, TERMINAL 5, LONDON

MATERIALS SUPPLIED: GRANITE PAVING AND SETTS: 17,000M², GRANITE ELLIPTICAL BENCHES: 7

CLIENT: BAA

ARCHITECT: YRM Architects

MAIN CONTRACTOR: Laing O'Rourke / Vetter UK

AS PART OF THE T5 DEVELOPMENT AT HEATHROW AIRPORT IN LONDON, A PRESTIGIOUS NEW GROUND PLAZA WALKWAY WAS COMPLETED USING THE VERY HIGHEST QUALITY NATURAL STONE MATERIALS FROM AGGREGATE INDUSTRIES.

The sustainable sourcing of products was a key requirement for the high profile scheme, as was the tight programme of works and stipulated budget.

The demanding criteria of this public realm area was overcome by working closely with the BBA design team at an early stage in the contract. We were able to draw on our experience and expertise in natural stone to provide bespoke solutions manufactured to within a 1mm tolerance. The aesthetic and durable granite specified was used to furnish both the ground and innovatively designed seating areas that also doubled as planters.

"AGGREGATE INDUSTRIES PROVIDED THE T5 PROJECT WITH A COMPLETE PACKAGE FOR THE SUPPLY OF GRANITE PAVING AND BESPOKE ITEMS. THEIR SERVICE WAS UNRIVALLED, OFFERING A UNIQUE SUPPLY OFFER, INCORPORATING ALL BAA'S REQUIREMENTS FOR VALUE FOR MONEY, QUALITY AND ETHICAL PERFORMANCE.

THIS WAS A TRUE SUCCESS FROM INITIAL DESIGN TO THE FINISHED ARTICLE ON SITE. THIS PROJECT IS SOMETHING THAT ALL PARTIES INVOLVED SHOULD BE PROUD TO BE INVOLVED WITH."

Mark Blackwell, Head of Design, BAA

CASE STUDY: LEICESTER CITY CENTRE REGENERATION

MATERIALS SUPPLIED: GRANITE PAVING, SETTS AND KERBS: 30,000M², GRANITE BENCHES: 23

CLIENT: Leicester City Council (Urban Design Group)

MAIN CONTRACTOR: FPCR

TERM CONTRACTOR: Balfour Beatty / Aggregate Industries Contracting Services / Leicester City Council / Jacksons Civil Engineering

LEICESTER CITY CENTRE WAS TRANSFORMED BY A MAJOR REGENERATION PROJECT TO DEVELOP ONE OF THE MIDLAND'S MAJOR SHOPPING FACILITIES, PERFORMING ARTS CENTRES, RESIDENTIAL ACCOMMODATION AND BUSINESS DISTRICTS.

A paving material was required for ten pedestrian streets to link the new retail and cultural districts of the thriving city centre. A contemporary, cosmopolitan feel was sought to lift the social environment and highlight the city's cultural atmosphere.

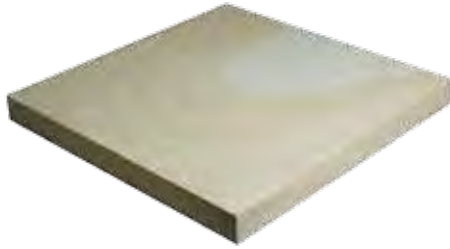
Aggregate Industries formed a close working relationship with the local architects and contractors involved and supplied 30,000m² of Granite paving, setts, kerbs and benches were supplied in a variety of different finishes and sizes to create a unique and individual look for each of the city's streets.

Suitably hardwearing and practical, the granite typically lasts at least twice as long as concrete and is also recyclable.

Aggregate Industries has been able to exceed the demands of the client and add a new dimension to a city full of vibrancy and possibility.







 50%* reduction in CO₂

YORKSTONE



ATTRACTIVE AND DURABLE, OUR UK SOURCED NATURAL **YORKSTONE** IS AVAILABLE IN A WIDE RANGE OF BEAUTIFUL COLOURS. ITS UNIQUE AESTHETIC QUALITIES AND OUTSTANDING PERFORMANCE MAKE INDIGENOUS NATURAL SANDSTONE A FIRM FAVOURITE WITH DESIGNERS.

Manufactured in the UK to meet or exceed relevant BS/EN standards, Natural Yorkstone offers excellent long-lasting reliability and exceptional resistance to wear. The product is distinguished by superb strength and slip-resistance properties, even when wet, and has over the years been a proven performer throughout the UK.

The Natural Yorkstone at Hunters Hill has guaranteed availability for 20 years and comes in diamond sawn paving with flame textured and traditional riven finishes or diamond sawn sets with flame textured and tumbled finishes. Selected products are available from stock or made to order, as is a full range of matching radial paving, kerbs, steps and other specials.



YORKSTONE PAVING AND SETTS, PETERBOROUGH

YORKSTONE FLAG PRODUCT DATA

Sizes (mm)	300 x random length [†]	450 x random length [†]	600 x random length [†]
Nominal Thickness	50, 63 [†] , 75 [†]	50, 63 [†] or 75 [†]	50, 63 [†] or 75 [†]
	400 wide x 400 long	600 wide x 600 long	
Nominal Thickness	50, 63 or 75	50, 63 or 75	

YORKSTONE SETTS PRODUCT DATA

Sizes (mm)	100 wide x 100 long	100 wide x 200 long	100 wide x random length
Nominal Thickness	50, 63 or 75	50, 63 or 75	50, 63 or 75

SEE PAGE 104 FOR FULL PRODUCT DATA.

[†] Normally available from stock. Other sizes and thicknesses available to order.

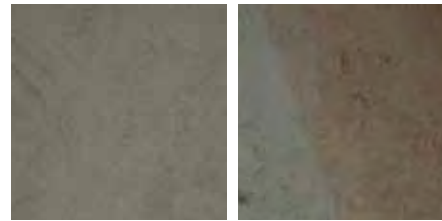
* Based on the BRE Green Guide to Specification (2009) ratings, 55kg embodied CO₂ for Indian Sandstone versus 27kg embodied CO₂ for UK sandstone.



HUNTERS HILL FLAMED



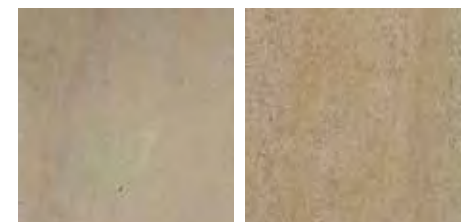
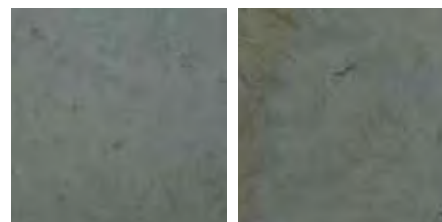
WILLOW BUFF DIAMOND SAWN



HUNTERS HILL DIAMOND SAWN



SANDY BUFF DIAMOND SAWN

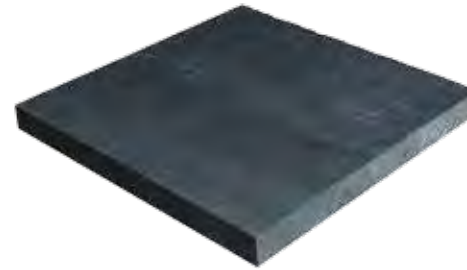




NATURAL STONE



WELSH SLATE, WELSH ASSEMBLY, CARDIFF



 **77%*** reduction in CO₂

WELSH SLATE



OUR **WELSH SLATE** IS RENOWNED FOR ITS DURABILITY, UNIQUE AESTHETICS AND CLEAN NATURAL RIVEN FINISH. AVAILABLE ONLY FROM THE FINEST SOURCES, IT'S SUITABLE FOR BOTH MODERN AND CONTEMPORARY DESIGNS.

Quarried and manufactured in North Wales, our Welsh Slate is long lasting, hard-wearing and extremely durable. While its excellent strength and high slip resistance make it highly suitable for both pedestrian and trafficked areas. Welsh Slate is also characterised by exceptionally low water absorption, making it resistant to staining, and non-fading for the whole life of the product.

Produced to meet all relevant BS/EN standards, Welsh Slate is available as paving and setts, featuring sawn sides and a natural split finish to top and bottom. It's also available with a flamed finish, plus a full range of matching radial paving, kerbs, steps and other specials.

WELSH SLATE FLAG PRODUCT DATA

Nominal size (mm)	300 x random length	450 x random length	600 x random length
Nominal Thickness	50, 63, 75	50, 63 or 75	50, 63 or 75
	400 wide x 400 long	600 wide x 600 long	
Nominal Thickness	50, 63 or 75	50, 63 or 75	

WELSH SLATE SETTS PRODUCT DATA

Nominal size (mm)	100 wide x 100 long	100 wide x 200 long	100 wide x random length
Nominal Thickness	50, 63 or 75	50, 63 or 75	50, 63 or 75

SEE PAGE 104 FOR FULL PRODUCT DATA.

* Based on the BRE Green Guide to Specification (2009) ratings, 120kg embodied CO₂ for Chinese Granite Setts versus 27kg embodied CO₂ for UK sandstone.

CASE STUDY: RETFORD MARKET SQUARE, NOTTINGHAMSHIRE

MATERIALS SUPPLIED: UK YORKSTONE (HUNTERS HILL) DIAMOND SAWN FLAG PAVING AND SETTS: 3,500M², GRANITE KERBS: 120LM

CLIENT: Bassetlaw District Council / Mace Group

ARCHITECT: Gillespies, Leeds

ENGINEER: Curtins Consulting & Hoare Lea

CONTRACTOR: Aggregate Industries

AGGREGATE INDUSTRIES SUPPLIED QUALITY YORKSTONE PAVING TO LAY IN THE REGENERATION PROJECT OF RETFORD'S MARKET PLACE.

The public realm improvements were intended to lift the town's central environment while integrating with the high quality townscape that surrounds it.

The paving specification demanded robust, low maintenance materials to withstand the weekly market and large scale town events. Aggregate Industries' Hunters Hill Yorkstone was specified due to its appearance, technical properties, local source and longevity of 20 years guaranteed supply.

Aggregate Industries ensured that the precise programme demands were successfully met. The success of Retford Market Place's rejuvenation is due to its clever design and use of exceptional quality natural materials, which create a stage for the town's activity while complementing the surrounding historic buildings.





CASE STUDY: DURHAM REGENERATION

MATERIALS SUPPLIED: UK HIGHMOOR YORKSTONE DIAMOND SAWN FLAG
PAVING: 1,200M², GRANITE PAVING, SETTS AND TACTILES: 3,100M²

CLIENT: Durham City Vision

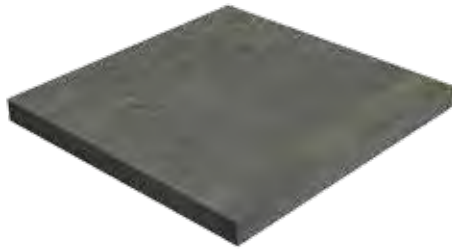
ARCHITECT: MacGregor Smith, Bath

MAIN CONTRACTOR: Carillion

DURHAM'S FLAGSHIP REGENERATION WAS BOOSTED WITH THE USE OF AGGREGATE INDUSTRIES INDIGENOUS YORKSTONE PAVING AND IMPORTED GRANITE SETTS, HELPING DURHAM CITY VISION CREATE AN ECONOMIC AS WELL AS A CULTURAL HUB IN THE NORTH EAST OF ENGLAND.

With the aim of making Durham a unique place to shop and do business, Durham City Vision set out to enhance the area's streetscape. Integral to the city's masterplan, the paving choice had to be able to rejuvenate the landscape, be sensitive to the existing historic infrastructure and provide a durable and economic solution.

Over 3,000m² of granite paving, setts and tactiles, in six colours variants, were specified to furnish the city's streets. A contrasting Highmoor diamond sawn Yorkstone in special thicknesses was also used, in-keeping with the historic feel of the area. The Highmoor Yorkstone, specified for its durability and naturally beautiful brown-grey hues, provided Durham City Vision with a revitalised, fresh yet traditional environment and quality finish they were aiming for.



 77%* reduction in CO₂

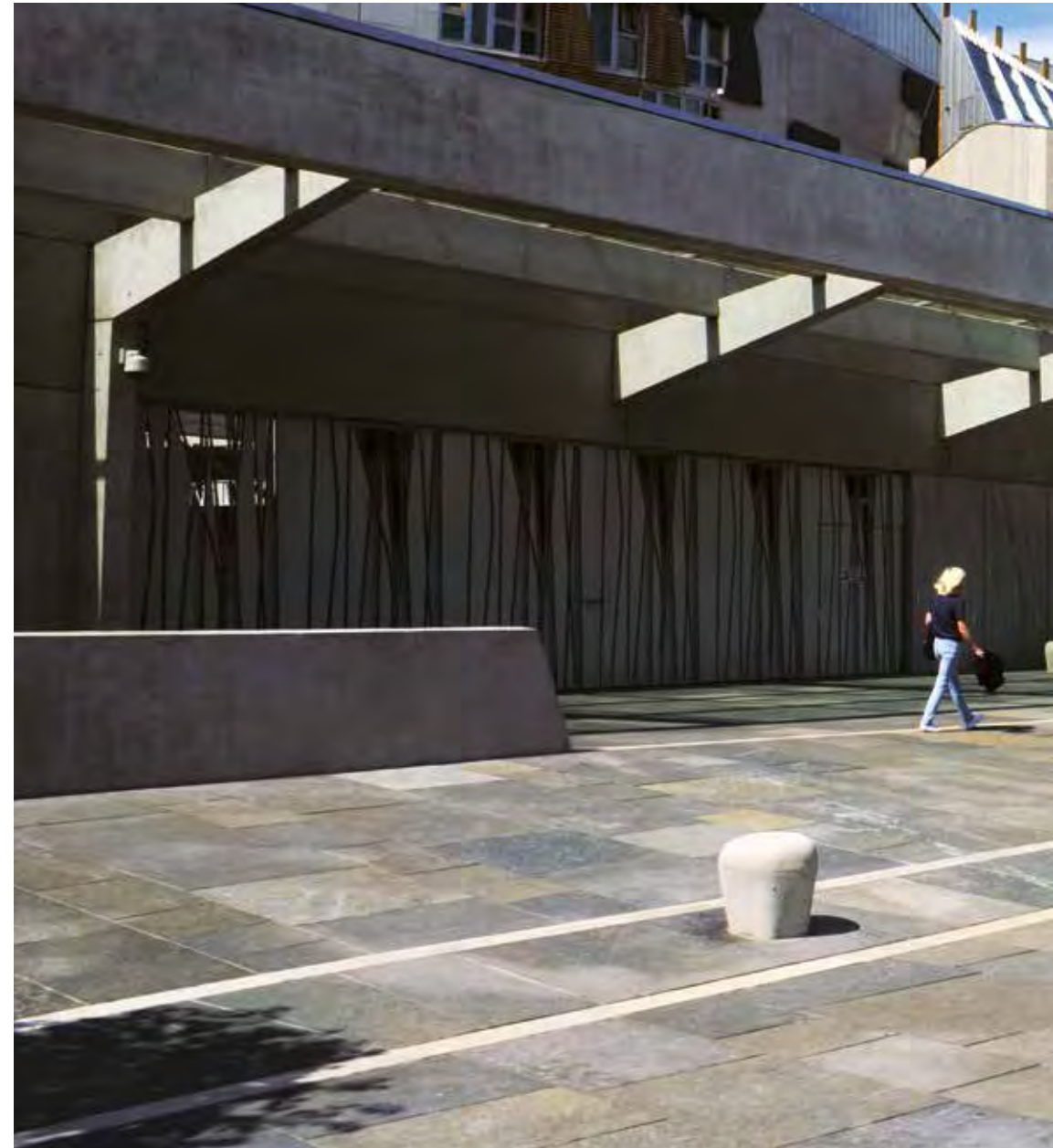
CAITHNESS STONE



A TRADITIONAL SCOTTISH STONE DISTINGUISHED BY ITS DURABILITY AND RIVEN APPEARANCE, **CAITHNESS STONE** IS ALSO CHARACTERISED BY ITS EXCLUSIVE GREY/BLACK WITH BROWN HUES COLOURING.

Quarried and manufactured in Scotland, Caithness Stone is a strong, hard-wearing and proven performer that's ideal for both pedestrian and trafficked areas. It has a distinctive colouring and appearance and is manufactured to meet all relevant BS/EN standards.

Caithness Stone paving and setts are produced with sawn sides, and natural splits top and bottom. A range of matching radial paving, kerbs, steps and other specials is also available to order.



CAITHNESS STONE FLAG PAVING PRODUCT DATA

Nominal size (mm)	150 x random length	300 x random length	450 x random length	600 x random length
Nominal Thickness	40, 50 or 65	40, 50 or 65	40, 50 or 65	40, 50 or 65

SEE PAGE 104 FOR FULL PRODUCT DATA.

* Based on the BRE Green Guide to Specification (2009) ratings, 120kg embodied CO₂ for Chinese Granite Setts versus 27kg embodied CO₂ for UK sandstone.



CAITHNESS STONE, SCOTTISH PARLIAMENT, EDINBURGH



NATURAL STONE



IRISH GRANITE



WITH ITS EXCEPTIONAL DURABILITY AND STRENGTH, THIS UK-SOURCED **IRISH GRANITE** IS IDEALLY SUITED TO THE MOST DEMANDING OF HARD LANDSCAPING APPLICATIONS AND USES.

Quarried and manufactured in Northern Ireland, Irish Granite offers superb durability with long lasting colours and appealing aesthetics. Manufactured to meet or exceed all relevant BS/EN standards, it also boasts excellent slip resistance performance.

Irish Granite is available in flamed or fine picked finishes, with sawn sides. There's also a full range of matching radial paving, sawn kerbs, steps and other specials available to order.

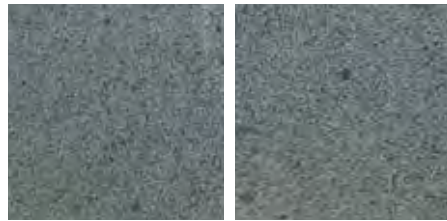


THREE COLOUR BLEND, IRISH GRANITE SETTS IN FINE PICKED FINISH

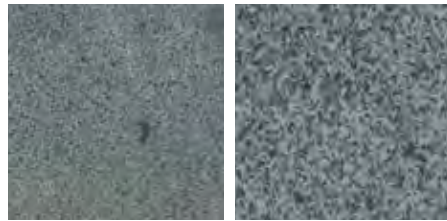
IRISH GRANITE FLAG PAVING PRODUCT DATA

Nominal size (mm)	450 x random length	600 x random length	400 wide x 400 long	400 wide x 650 long
Nominal Thickness	50 or 63	50 or 63	50 or 63	50 or 63

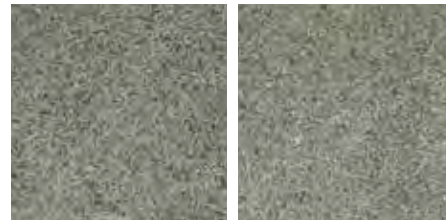
SEE PAGE 105 FOR FULL PRODUCT DATA.



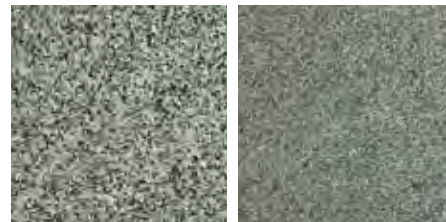
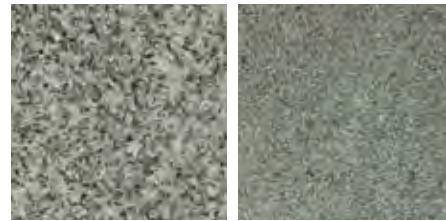
G4030 BALLY MAGREHAN FLAMED



G4030 BALLY MAGREHAN FINE PICKED



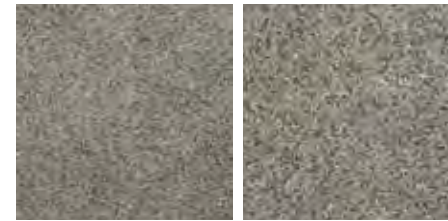
G4020 NEWRY FLAMED



G4020 NEWRY FINE PICKED



G4010 MOURNE FLAMED

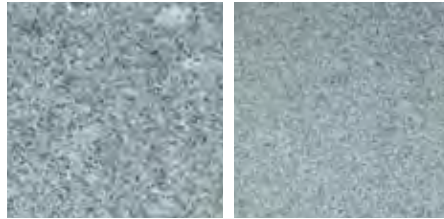


G4010 MOURNE FINE PICKED





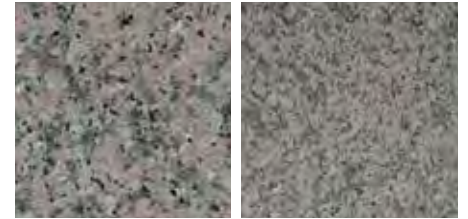
G6010 PORTUGUESE LIGHT SILVER GREY FLAMED



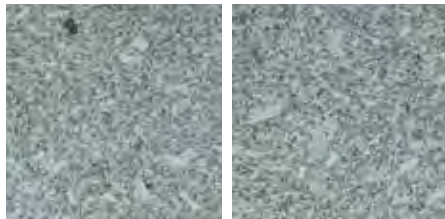
G6020 PORTUGUESE DARK SILVER GREY FLAMED



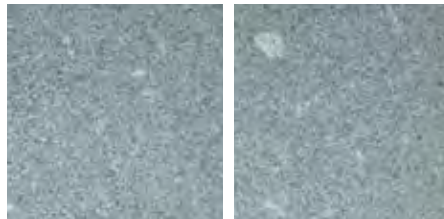
G6030 PORTUGUESE PINK FLAMED



G6040 PORTUGUESE RED FLAMED



G6010 PORTUGUESE LIGHT SILVER GREY FINE PICKED



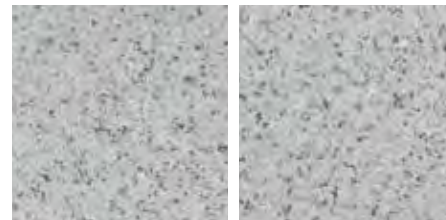
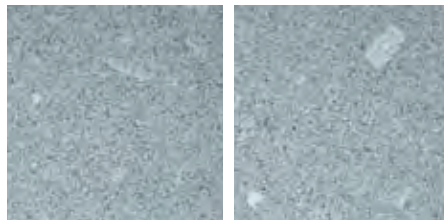
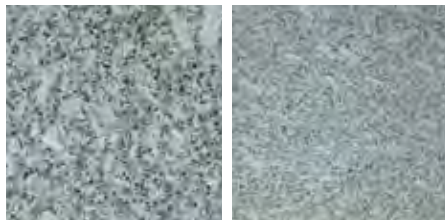
G6020 PORTUGUESE DARK SILVER GREY FINE PICKED

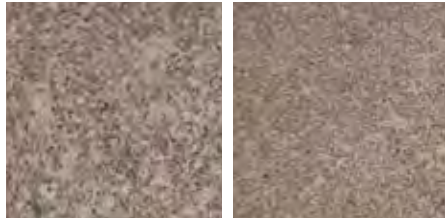


G6030 PORTUGUESE PINK FINE PICKED



G6040 PORTUGUESE RED FINE PICKED





G6050 PORTUGUESE YELLOW FLAMED



G6050 PORTUGUESE YELLOW FINE PICKED



EUROPEAN GRANITE PAVING,
OLD MARKET SQUARE, NOTTINGHAM



PORTUGUESE GRANITE nssPlus

PAVING AND SETTS MADE FROM **PORTUGUESE GRANITE** HAVE BEEN USED SUCCESSFULLY THROUGHOUT THE UK FOR DECADES. PROVEN IN PERFORMANCE, THE GRANITE'S HIGH STRENGTH AND LOW WATER ABSORPTION ENSURE LONG-LASTING AESTHETIC APPEAL.

Portuguese Granite boasts excellent skid and slip resistance properties, even when wet, and is hard-wearing and highly durable, making it ideally suited for both pedestrian and trafficked areas.

All Portuguese Granite products are manufactured to meet relevant BS/EN standards. Paving and sets are produced with sawn sides, plus a natural split finish to top and bottom. A flamed finish is also available, along with a full range of matching radial paving, kerbs, cropped setts, steps and other specials.

PORTUGUESE GRANITE FLAG PRODUCT DATA

Nominal size (mm)	450 wide x random length	600 wide x random length
Nominal Thickness	50,63 or 75	50,63 or 75
Nominal size (mm)	400 wide x 400 long	400 wide x 650 long
Nominal Thickness	50,63 or 75	50,63 or 75

PORTUGUESE GRANITE SETTS PRODUCT DATA

Nominal size (mm)	100 wide x 100 long	100 wide x 200 long	100 wide x 250/300 random length
Nominal Thickness	50 or 100	50, 100 or 150	150 or 200

SEE PAGE 105 FOR FULL PRODUCT DATA.

CASE STUDY: OLD MARKET SQUARE, NOTTINGHAM

MATERIALS SUPPLIED: GRANITE (CRYSTAL AZUL) FLAG PAVING: 5,000M² GRANITE (AMARELO MONDIM) YELLOW PAVING AND BENCHES

CLIENT: Nottingham City Council

ARCHITECT: Gustafson & Porter

CONSULTANT/ENGINEER: Ove Arup and Partners

MAIN CONTRACTOR: Balfour Beatty Civil Engineering

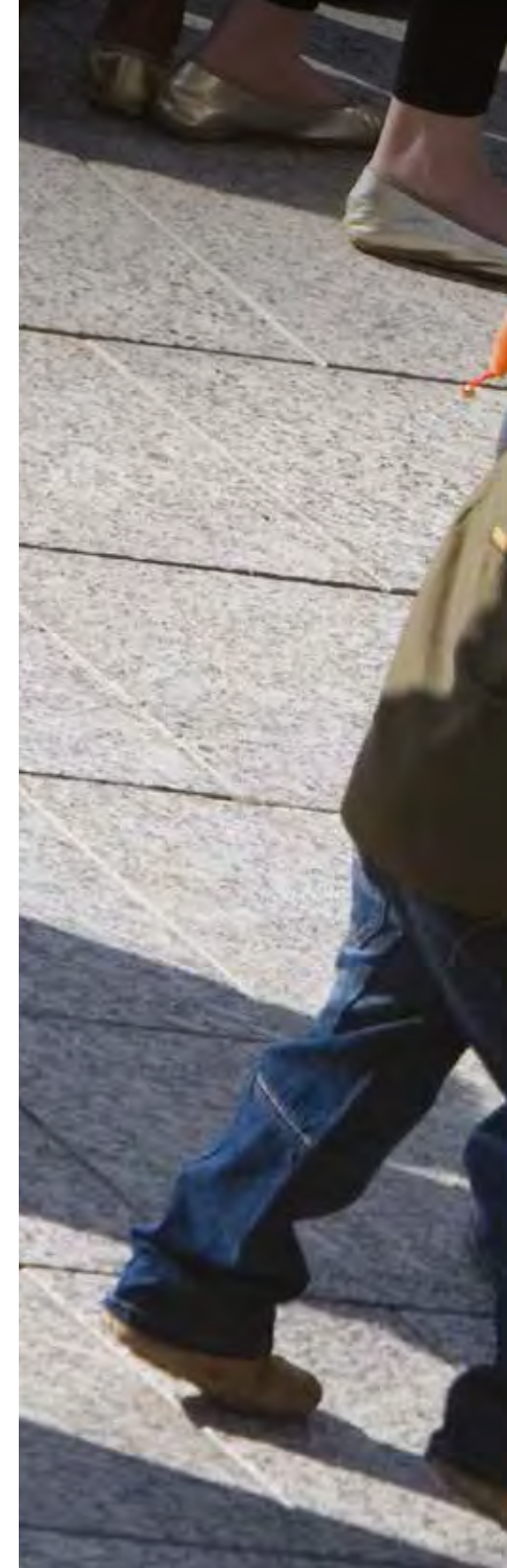
NOTTINGHAM'S 22,000M² PEDESTRIANISED OLD MARKET SQUARE SITS IN THE HEART OF THE CITY CENTRE AND IS PROUDLY THE LARGEST SURVIVING MARKET SQUARE OF ITS TYPE IN THE COUNTRY.

Nottingham City Council wanted to create an attractive, high quality public space to be enjoyed by local people and visitors alike. Architects, Gustafson & Porter, designed a modern centrepiece to the city that accommodated all those that wanted to rest and socialise on the seating, soak up the culture or play in the feature fountains.

As an important regeneration project for the city, Nottingham required a vibrant and high quality natural stone material. Our Crystal Azul (sourced specifically for this project) from Portugal was specified as the main stone used for the majority of the paving in the square for its beautiful light, course texture that is packed with large plagioclase feldspar crystals, all embedded in a fine grained matrix.

An even finer grained yellow granite, also from Portugal, was used to make up a large part of the water feature and some of the stone bench seating terraces providing an interesting colour contrast.

The multiple award winning communal space (which includes two Civic Trust Awards) is now used to host various fairs, concerts and exhibitions for all to enjoy.







NATURAL STONE





PORPHYRY SETTS, MILLENNIUM CENTRE, CARDIFF



PORPHYRY



BOASTING A RANGE OF COLOURS AND HUES EXCLUSIVE TO ITALIAN **PORPHYRY**, THIS HARD-WEARING RANGE OF SMALL PAVING AND SETTS HAS BEEN TRANSFORMING LANDSCAPES THROUGHOUT EUROPE FOR CENTURIES.

Demonstrating exceptional strength and durability, along with good slip and frost resistant properties, Porphyry is ideal for both pedestrian and trafficked areas.

Quarried and manufactured in Northern Italy, Porphyry meets all relevant BS/EN standards and is available as paving and setts supplied with a natural split top, bottom and cropped sides. Sawn sides are available in some sizes. Porphyry also comes in kerbs, steps and other specials. Some sizes and thickness are made to order.



NATURAL STONE

PORPHYRY FLAG PRODUCT DATA

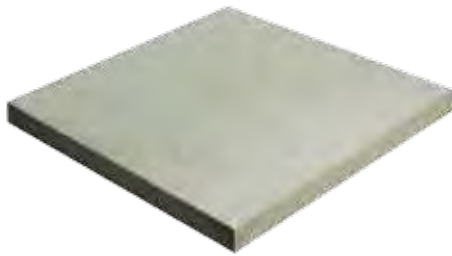
Nominal size (mm)	300 wide x random length	450 wide x random length	600 wide x random length
Nominal Thickness*	60, 80, 100 or 150	60, 80, 100 or 150	60, 80, 100 or 150

PORPHYRY SETTS PRODUCT DATA

Nominal size (mm)	50 wide x 50 long	80 wide x 80 long	100 wide x 100 long	150 wide x random length
Nominal Thickness*	50 or 60	80 or 100	80 or 100	80, 100 or 150

SEE PAGE 105 FOR FULL PRODUCT DATA.

*Due to the nature of Porphyry, supplied thicknesses will vary over a range from the nominal - please see the data sheet for further information.



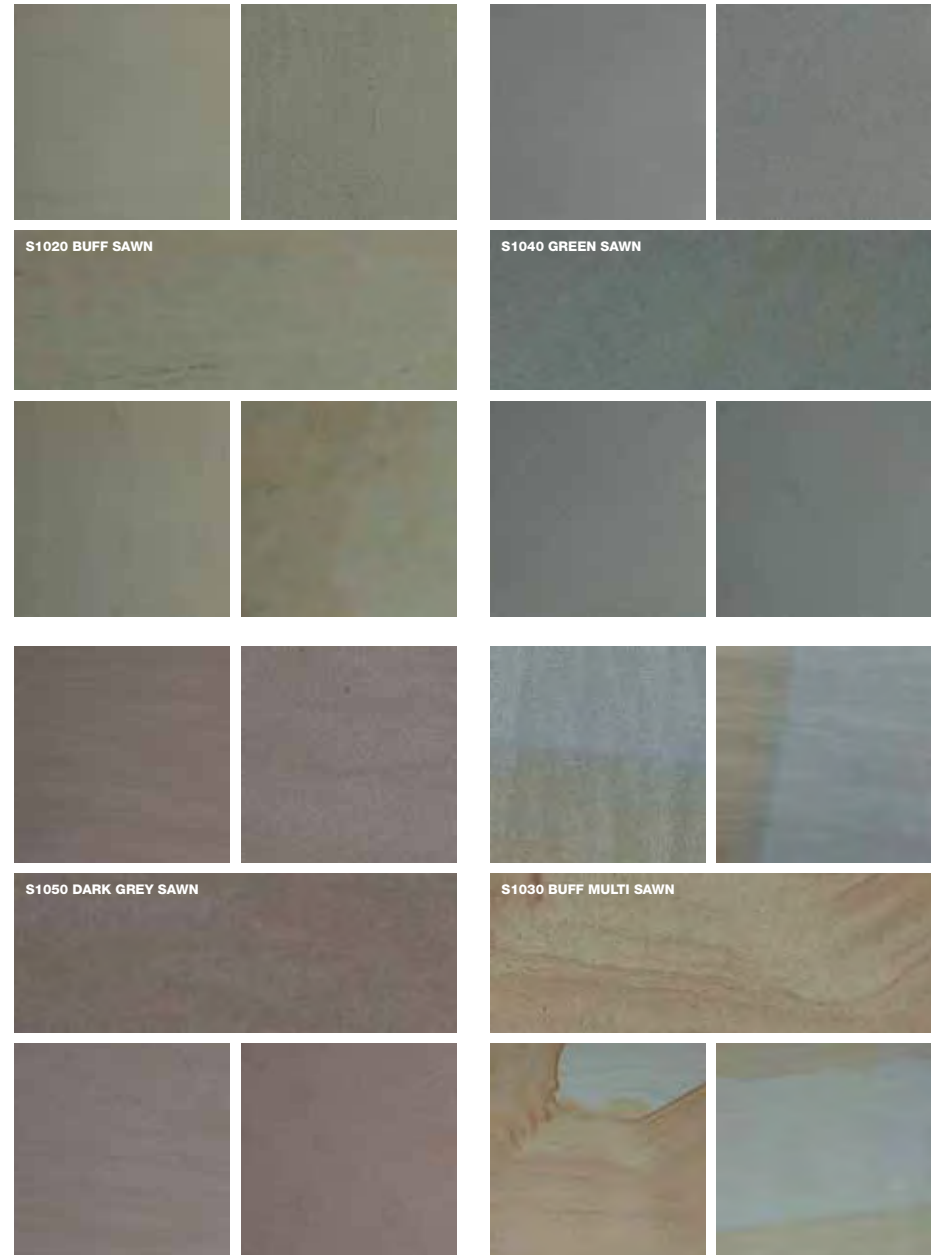
SANDSTONE



IMPORTED **SANDSTONE** PAVING AND SETTS BLEND AESTHETIC APPEAL WITH AFFORDABILITY. AVAILABLE IN A RANGE OF COLOURS.

Manufactured to meet relevant BS/EN standards, our imported Sandstone is a durable solution that's easy on the eye.

The perfect alternative to indigenous natural stone, paving is available in a sawn and lightly sandblasted finish, with sawn sides. Setts are available in sawn, lightly sandblasted and tumbled finishes, with sawn sides. Kerbs, steps and other specials are also available.



NATURAL STONE

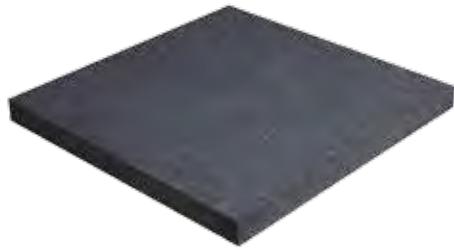
SANDSTONE FLAG PRODUCT DATA

Nominal size (mm)	450 wide x random length	600 wide x random length
Nominal Thickness	50, 63 or 75	50, 63 or 75

SANDSTONE SETTS PRODUCT DATA

Nominal size (mm)	100 wide x 100 long	100 wide x 200 long	100 wide x random length
Nominal Thickness	50, 63 or 75	50, 63 or 75	50, 63 or 75





GRANITE FLAGS



GRANITE FLAGS HAVE PROVEN TECHNICAL AND AESTHETIC PERFORMANCE, AND ARE AVAILABLE IN A WIDE VARIETY OF COLOURS.

Granite flags are hardwearing, durable and strong and offer long-lasting colour and aesthetics as well as good skid and slip performance.

Manufactured to meet relevant BS/EN standards, paving is available in either a flamed or fine picked finish, with sawn sides and bottom. Setts are available in a wide variety of finishes, including cropped, flamed and fine picked. A selection of kerbs, steps and other specials is also available.



NATURAL GRANITE PAVING, KERBS AND SPECIALS, DIDBURY FOUNTAIN, OLDBURY

NATURAL STONE

GRANITE FLAG PRODUCT DATA

Nominal size (mm)	450 x random length	600 x random length	400 wide x 400 long	600 wide x 600 long
Nominal Thickness	50, 63 or 75	50, 63 or 75	50, 63 or 75	50, 63 or 75



NATURAL GRANITE SETTS, DERBY SQUARE, LIVERPOOL



GRANITE SETTS



WHETHER USED AS A FEATURE OR FOR A LARGER AREA IN A LANDSCAPING PROJECT, **GRANITE SETTS** PROVIDE THE PERFECT SOLUTION.

Durable, hard-wearing and available in a range of colours, sizes and functions, Granite Setts are a cost effective way to add a new dimension to a landscaping scheme.

Ideal for both pedestrian and trafficked areas, Granite Setts come in bush hammered, fine picked and flame textured finishes and are sawn on all sides, top and bottom.



GRANITE SETTS PRODUCT DATA

Nominal size (mm)	100 wide x 100 long	100 wide x 200 long
Nominal Thickness	50, 60, 75 or 100	50, 60, 75 or 100
Nominal size (mm)	100 wide x 250/300 random length	150 wide x 300 long
Nominal Thickness	50, 60, 75 or 100	50, 60, 75 or 100

SEE PAGE 106 FOR FULL PRODUCT DATA.



GRANITE KERBS



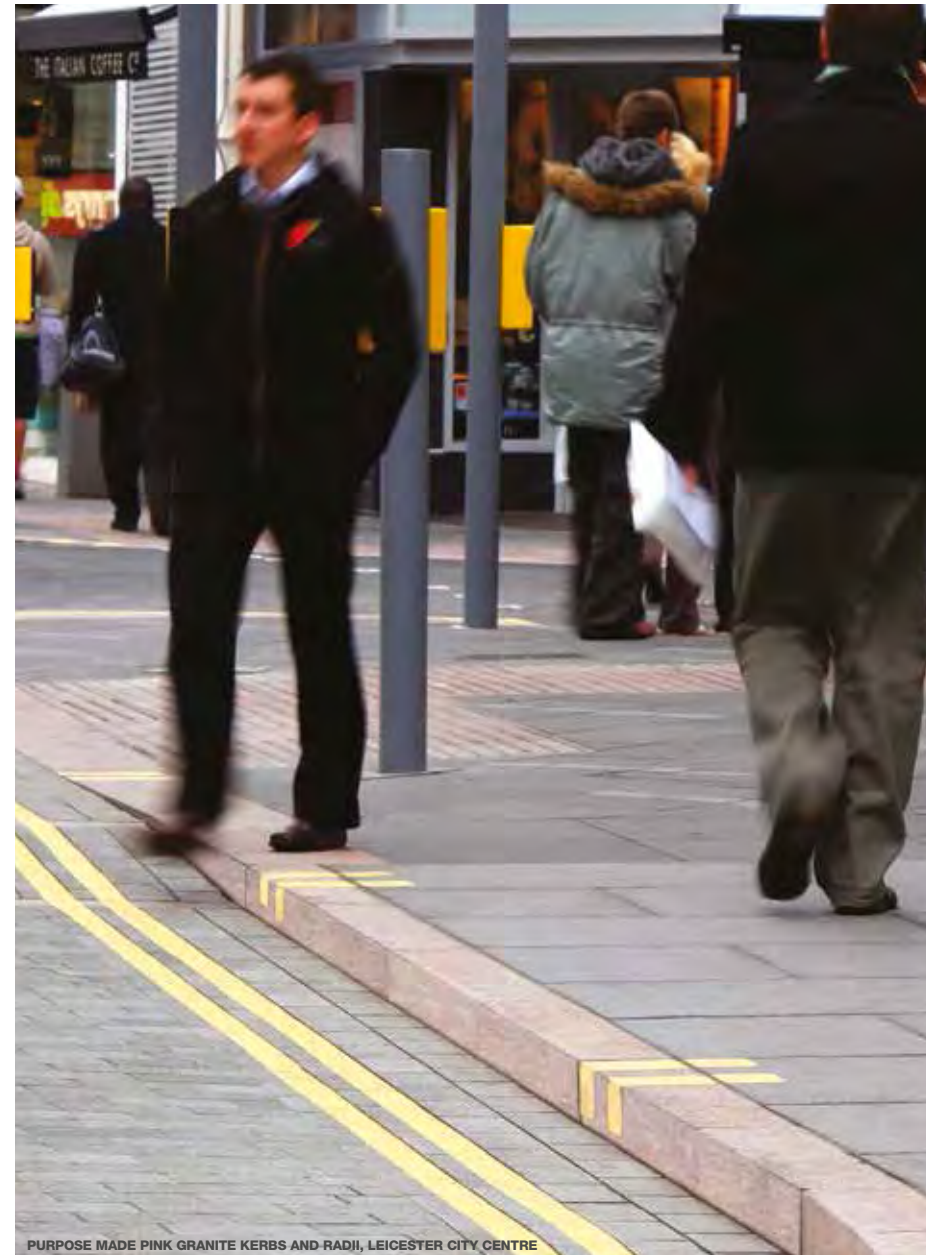
AVAILABLE IN A BROAD RANGE OF COLOURS, IMPORTED **GRANITE KERBS** WORK WELL WITH ANY OF OUR HARD LANDSCAPING PRODUCTS.

Granite kerbs are not only hard-wearing and durable, but also offer long-lasting colour and excellent aesthetic appeal, together with good anti-skid performance.

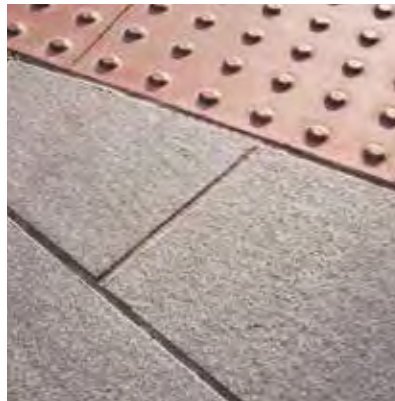
All products meet the relevant BS/EN standards and are available in either a flamed or fine picked finish, with sawn sides, tops, bottom and ends. The kerbs are complemented by a large range of accessories, including radius kerbs, droppers, quadrants and other specials made to order.

GRANITE KERB PRODUCT DATA

Nominal size (mm)	150 wide x 1000 long straight	125 wide x 1000 long straight	300 wide x 1000 long straight
Nominal height	300	250	200



PURPOSE MADE PINK GRANITE KERBS AND RADII, LEICESTER CITY CENTRE



CASE STUDY: STATION ROAD, HARROW

MATERIALS SUPPLIED: GRANITE (MID GREY) FLAG PAVING: 5,500M², GRANITE (MID GREY) SETTS: 600M², GRANITE (SILVER GREY) KERBS AND CHANNELS: 2,200LM, GRANITE (MID GREY AND RED) TACTILE PAVING: 250M², GRANITE BENCHES: 21 NO., GRANITE "KATIE'S STATUE" PLINTH, STONEMASTER (LIGHT GREY) FLAG PAVING: 1,900M², SUPERFLEX HR 25 ASPHALT.

CLIENT: Harrow Council

MAIN CONTRACTOR: Enterprise Mouchel

TERM CONTRACTOR: J&B Construction Ltd

IN EXCESS OF 8,000M² OF NATURAL STONE AND CONCRETE PAVING, SUPPLIED BY AGGREGATE INDUSTRIES, HAS REGENERATED HARROW'S STATION ROAD TO CREATE A BUSTLING, COSMOPOLITAN INFUSION FOR THE LONDON BOROUGH'S CITY STREETScape.

Harrow Council wanted to meet the needs of a modern economy by making Harrow special and distinctive as well as achieving a harmonious layout for both buses and pedestrians in the area.

Our durable and attractive Mid Grey Granite was specified to regenerate the focal shopping area, along with setts, kerbs and tactile units. We also supplied grey StoneMaster, a stone simulate product designed to replicate natural stone, incorporating a fine natural aggregate face mix.

"AGGREGATE INDUSTRIES HAVE PLAYED AN INTEGRAL PART IN THE DEVELOPMENT AND STRATEGY OF HARROW TOWN CENTRE. THEY HAVE ALWAYS BEEN AMENABLE PROVIDING A DIVERSE KNOWLEDGE OF MATERIALS AND PRODUCTS, PROVIDING SOLUTIONS AND BRINGING EXPERTISE FROM OTHER AREAS AS REQUIRED."

**Tony Durke, Schemes Manager,
London Borough of Harrow**



G2010 SILVER GREY FLAMED

G2020 DARK GREY FLAMED

G2030 MID GREY FLAMED

G2060 PINK FLAMED

G2080 GREY GREEN FLAMED

G2010 SILVER GREY FINE PICKED

G2020 DARK GREY FINE PICKED

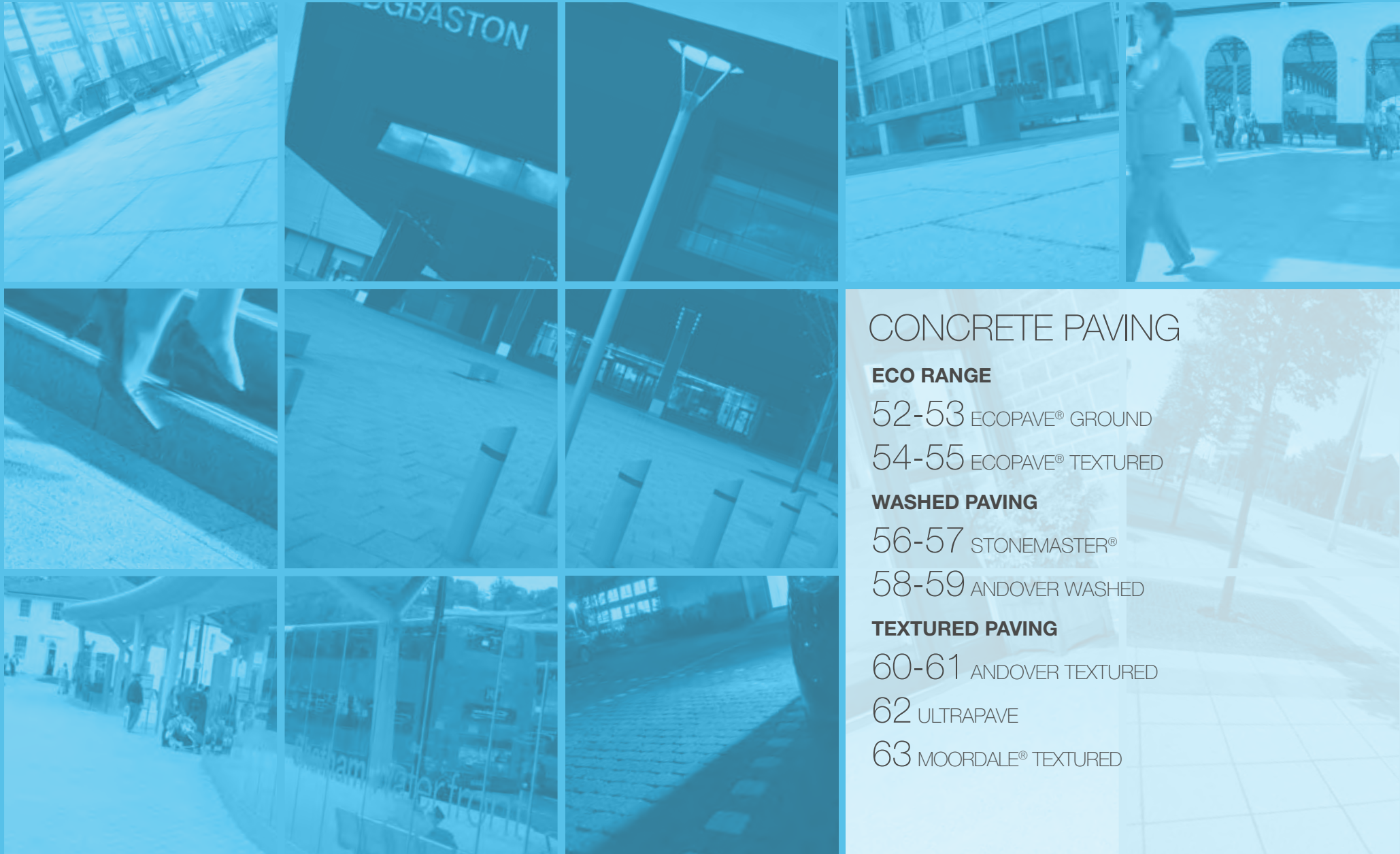
G2030 MID GREY FINE PICKED

G2060 PINK FINE PICKED

G2080 GREY GREEN FINE PICKED

NATURAL STONE





CONCRETE PAVING

ECO RANGE

52-53 **ECOPAVE®** GROUND

54-55 **ECOPAVE®** TEXTURED

WASHED PAVING

56-57 **STONEMASTER®**

58-59 **ANDOVER WASHED**

TEXTURED PAVING

60-61 **ANDOVER TEXTURED**

62 **ULTRAPAVE**

63 **MOORDALE®** TEXTURED



66 ACADEMY

67 NIGHTEC

GROUND PAVING

68-69 APPALACHIAN®

70 MOORDALE® GROUND

71 VIANOVA

RUMBLED PAVING

72 COUNTRYSETTS

73 WOBURN RUMBLED

CAST PAVING

74 WOBURN ORIGINAL

75 EUROPA

INFILTA PAVING

76-77 INFILTA

PROFILED PAVING

80 COURTSTONE

81 GRASSGRID

81 ELITE

82-83 BRITISH STANDARD



QUICK PRODUCT GUIDE

ECOPAWE® GROUND

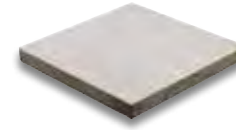
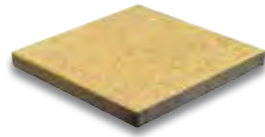
ECOPAWE® TEXTURED

STONEMASTER®

ANDOVER WASHED

ANDOVER TEXTURED

ULTRAPAVE



COLOURS

Black Fleck

COLOURS

Grey Fleck
Buff Fleck

COLOURS

Light Buff
Medium Buff
Dark Buff
Light Grey
Medium Grey
Dark Grey

COLOURS

Silver Grey
Anthracite Charcoal

COLOURS

White
Light Grey
Silver Grey
Midnight Grey
Cream
Chestnut
Oak
Silver Fleck

COLOURS

Dark Grey (steel reinforced),
Silver Grey (steel reinforced)
Standard Grey (fibre reinforced)

TEXTURES

Ground

TEXTURES

Textured

TEXTURES

Washed

TEXTURES

Washed

TEXTURES

Textured

TEXTURES

Textured

PAGE

52-53

PAGE

54-55

PAGE

56-57

PAGE

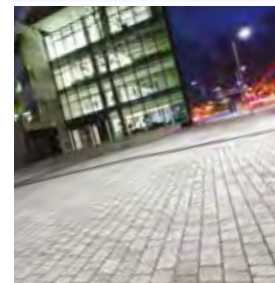
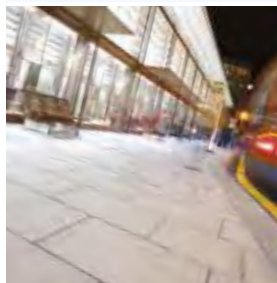
58-59

PAGE

60-61

PAGE

62



MOORDALE®
TEXTURED



COLOURS

Grey
Buff

TEXTURES

Textured

PAGE

63



ACADEMY



COLOURS

Grey

TEXTURES

Textured

PAGE

66



NIGHTEC



COLOURS

Grey (luminous)

TEXTURES

Textured

PAGE

67



APPALACHIAN®



COLOURS

Grey
Black Fleck
Charcoal
Leemoor

TEXTURES

Ground

PAGE

68-69



MOORDALE®
GROUND



COLOURS

Buff
Grey

TEXTURES

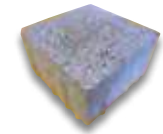
Ground

PAGE

70



VIANOVA



COLOURS

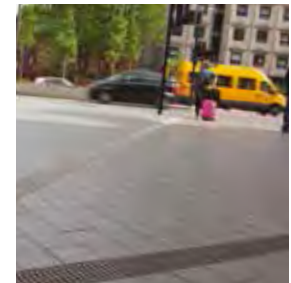
Light Grey
Dark Grey
Anthracite Charcoal

TEXTURES

Ground

PAGE

71



QUICK PRODUCT GUIDE

COUNTRYSETTS

WOBURN RUMBLED

WOBURN ORIGINAL

EUROPA

INFILTA

COURTSTONE



COLOURS

Silver Grey
Dark Grey

COLOURS

Autumn
Rustic
Graphite

COLOURS

Rustic
Graphite

COLOURS

Autumn
Brindle
Buff
Charcoal
Grey
Red
Burnt Oker

AVAILABLE IN

Infilta
Woburn Original
Woburn Rumbled
EcoPave Infilta
Andover Textured
Andover Washed
StoneMaster® Infilta

COLOURS

Charcoal

TEXTURES

Rumbled

TEXTURES

Rumbled

TEXTURES

Cast

TEXTURES

Cast

TEXTURES

Cast

TEXTURES

Profiled

PAGE

72

PAGE

73

PAGE

74

PAGE

75

PAGE

76-77

PAGE

80



GRASSGRID



COLOURS

Grey

TEXTURES

Profiled

PAGE

81



ELITE



COLOURS

Format 2 - Grey

TEXTURES

Profiled

PAGE

82



ELITE



COLOURS

Format 3 - White

TEXTURES

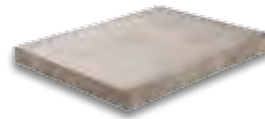
Profiled

PAGE

82



BRITISH STANDARD PAVING



COLOURS

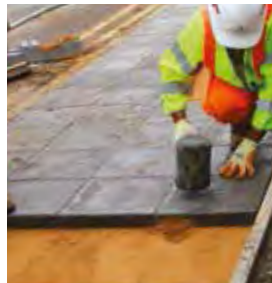
Grey
Buff
Red

TEXTURES

Cast/Profiled

PAGE

83



BRITISH STANDARD TACTILE



COLOURS

Grey
Buff
Red
Charcoal

TEXTURES

Profiled

PAGE

84





ECOPAVE® GROUND



ECOPAVE GROUND IS ONE OF THE LOWEST ENVIRONMENTAL BURDEN FLAG PAVERS IN THE UK, MINIMISING WASTE AND MAXIMISING RESOURCE PRODUCTIVITY.



Providing all the hardwearing characteristics of granite at an affordable price, Ecopave Ground is manufactured from up to 82% recycled or reclaimed materials and raw materials selected for their environmental benefits. Focusing on batching plant, product presses, recycling and noise pollution, manufacturing processes have been tailored to utilise efficient practices.

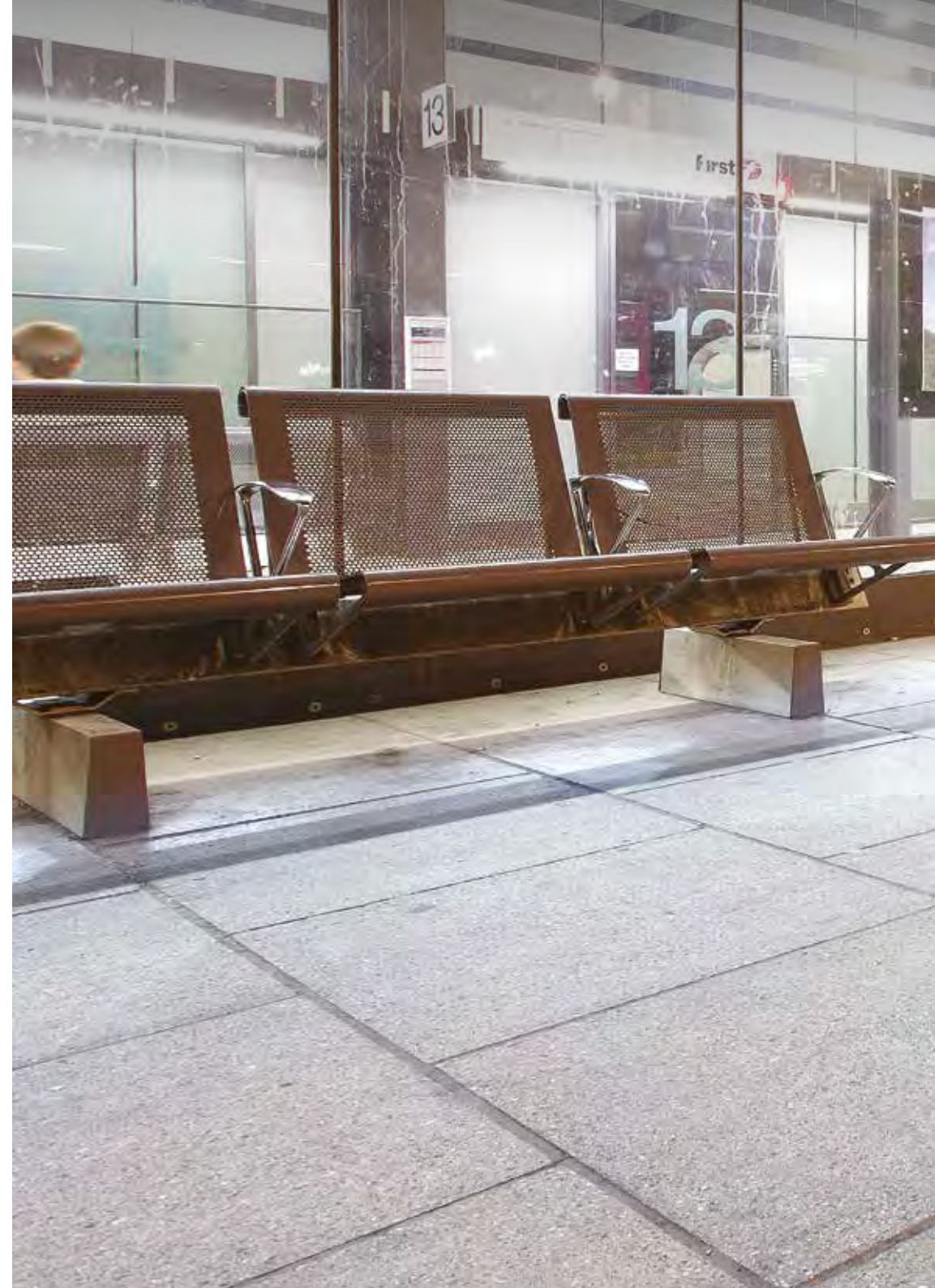
As such, Ecopave Ground helps local authorities meet environmental quotas and fully complies with environmental statements and policies. Available as step units made to order.

ECOPAVE GROUND PRODUCT DATA

Sizes (mm)	600x600	450x450	400x400
Thickness (mm)	50	70	65

SEE PAGE 107 FOR FULL PRODUCT DATA.

† Represents non-primary material within the complete mix design.





CONCRETE PAVING

EDGBASTON

CONCRETE PAVING

ECOPAVE TEXTURED, EDGBASTON, BIRMINGHAM





ECOPAVE® TEXTURED



FINELY TEXTURED AND AVAILABLE IN TWO SHADES AND A LARGE RANGE OF SIZES, **ECOPAVE TEXTURED** IS A PREMIUM QUALITY FLAG AND BLOCK PAVING LANDSCAPING PRODUCT LENDING STYLISH APPEAL TO ANY PROJECT.

Ecopave Textured incorporates uniquely formulated Cornish aggregates to optimize performance, durability and aesthetic appeal. Displaying all the hardwearing characteristics of granite, but at an affordable price, Ecopave Textured offers significant environmental benefits too, containing 57% recycled or reclaimed materials.

The product is available in 13 flag and block paving sizes to help provide optimum design flexibility and strong visual appeal in virtually any location. Ecopave Textured is also available as an Infiltra concrete block permeable paver.



ECOPAVE TEXTURED FLAG PRODUCT DATA

Size (mm)	600x600	450x450	450x450	400x400	400x200	600x200	300x300	300x200	300x100	200x200	200x100	100x100	200x100
Thickness (mm)	50	70	50	65	65	80	80	80	80	80	80	80	60

SEE PAGE 107 FOR FULL PRODUCT DATA.
 † Represents non-primary material within the complete mix design.

CONCRETE PAVING

STONEMASTER, BUFF SHADES, SOUTHAMPTON UNIVERSITY





STONEMASTER®



A STYLISH SOLUTION FOR ANY LANDSCAPING PROJECT, **STONEMASTER** IS A REVOLUTIONARY RANGE OF PAVING THAT DISPLAYS ALL THE INHERENT BEAUTY OF INDIGENOUS STONE.

StoneMaster gives designers the natural stone look without using natural stone. Containing up to 57% reclaimed or recycled material, it's actually a fine stone mix that replicates sandstone or granite.

A cost effective alternative to natural stone, StoneMaster features a pencil chamfer for enhanced aesthetics and protection against laying damage. The product comes in fixed plan sizes for ease of design.

STONEMASTER PRODUCT DATA

Sizes (mm)	600x450	450x450	300x450	600x200	300x300	300x200	300x100	200x200	200x100	100x100
Thickness (mm)	80	80	80	80	80	80	80	80	80	80

SEE PAGE 107 FOR FULL PRODUCT DATA.
 † Represents non-primary material within the complete mix design.
 All shades available MTO with a minimum order of 500m².



ANDOVER WASHED



AN IDEAL SOLUTION FOR PRESTIGIOUS MODERN OR TRADITIONAL SCHEMES, **ANDOVER WASHED IS A PREMIUM QUALITY WASHED BLOCK.**

Andover Washed is characterised by a pale, understated colour that forms a contemporary backdrop for either modern or traditional projects. Containing a minimum of 53% recycled or reclaimed material in the back mix, it can be used to create different patterning effects in adjacent areas while retaining overall texture and colour consistency.

Featuring a pencil chamfer profile for smoother riding surface, Andover Washed is available in long aspect paving for a versatile contemporary look. The range also includes Andover step riser units plus an Infilta concrete block permeable paver.



ANDOVER WASHED PRODUCT DATA

Sizes (mm)	600x200	300x300	300x200	300x100	200x200	200x100	100x100
Thickness (mm)	80	80	80	80	80	80	80

SEE PAGE 108 FOR FULL PRODUCT DATA.

† Represents non-primary material within the complete mix design.



CONCRETE PAVING

ANDOVER TEXTURED, BRISTOL



ANDOVER TEXTURED

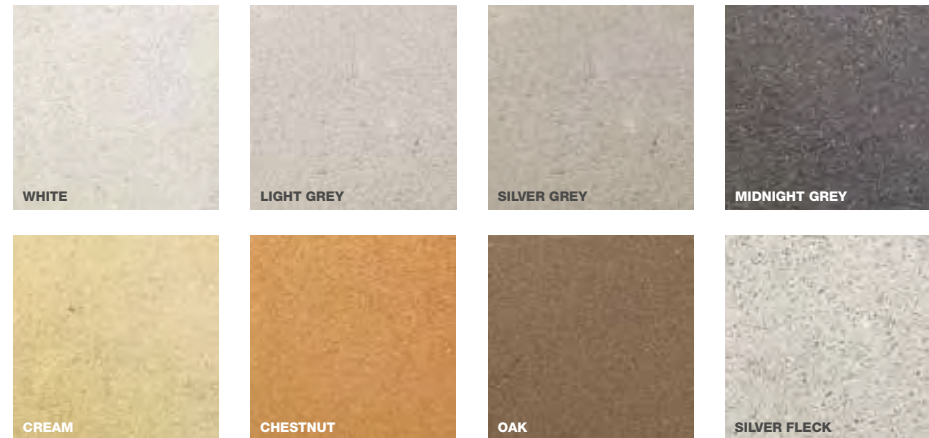


ANDOVER TEXTURED

COMBINES STYLISH APPEAL AND EXCEPTIONAL DURABILITY WITH AN AFFORDABLE PRICE. IT'S A PREMIUM QUALITY FLAG AND BLOCK PAVING PRODUCT IN A WIDE RANGE OF SHADES AND SIZES.

Offering all the hardwearing characteristics of granite, Andover Textured incorporates uniquely formulated Cornish aggregates to provide enhanced durability, performance and aesthetics.

Available in a range of shades that can be used to complement and contrast with one another, Andover Textured also comes in 13 different flag and block paving sizes for the ultimate in design flexibility and visual appeal. It's also available as an Infiltra concrete block permeable paver.



ANDOVER TEXTURED PRODUCT DATA

Size (mm)	600x600	450x450	450x450	400x400	400x200	600x200	300x300	300x200	300x100	200x200	200x100	100x100	200x100
Thickness (mm)	50	70	50	65	65	80	80	80	80	80	80	80	60

SEE PAGE 108 FOR FULL PRODUCT DATA.



ULTRAPAVE



MANUFACTURED TO REPLICATE THE LOOK AND FEEL OF NATURAL GRANITE, **ULTRAPAVE** IS STEEL WIRE REINFORCED TO PROVIDE INCREASED PRODUCT INTEGRITY AND PREVENT TRIP HAZARDS.



Ultrapave combines visual appeal with exceptional strength. Similar in appearance to natural granite, it is reinforced to prevent trip hazards, making it ideal for urban pavements, shopping precincts and areas with occasional car, HGV or mechanical sweeper overrun.

Ultrapave contains up to 81% recycled or reclaimed aggregates in the Silver Grey shade and 50% in Dark Grey. Available in two shades with steel reinforcement plus British Standard Grey with fibre reinforcement in a pimple finish.

ULTRAPAVE FLAG PRODUCT DATA

Sizes (mm)	750x600	600x600	750x600	600x600	600x450
Thickness (mm)	63	63	63	63	63
Finish	Textured	Textured	Pimple	Pimple	Pimple
Reinforcement	Steel	Steel	Fibre	Fibre	Fibre
Colours available	SG, DG	SG	Gy	Gy	Gy



ULTRAPAVE, MAID MARIAN WAY, NOTTINGHAM

CONCRETE PAVING

SEE PAGE 108 FOR FULL PRODUCT DATA.

† Represents non-primary material within the complete mix design.

SG - Silver Grey / DG - Dark Grey / Gy - Grey, All units MTO.

750x600 in Dark Grey available flat packed in pack of 13 in both reinforced and unreinforced formats on MTO basis with minimum order of 170 packs.

600x600 Silver Grey is also available as unreinforced on MTO basis.



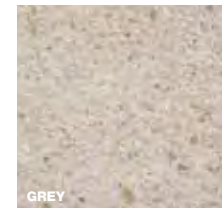
MOORDALE® TEXTURED



COMBINING TEXTURAL APPEAL, DURABILITY AND ECONOMY, **MOORDALE TEXTURED** IS A HIGH QUALITY FLAG PAVING THAT CONTAINS YORKSTONE AND LIMESTONE AGGREGATES.

A premium but cost effective alternative, Moordale Textured incorporates Yorkstone and limestone aggregates to provide the very best in performance and durability. It's ideal for urban pavements, shopping precincts and areas with occasional car, HGV or mechanical sweeper overrun.

With a range of colours available, it's possible to create either large areas of warm solid colour or use the options available to complement one another or provide subtle contrasts. Moordale Textured is also available in step units made to order.



MOORDALE TEXTURED PRODUCT DATA

Sizes (mm)	600x600	450x450	450x450	400x400	400x400
Thickness (mm)	50	70	50	65	50

SEE PAGE 108 FOR FULL PRODUCT DATA.

CASE STUDY: HIGH ST & CARPENTERS RD, STRATFORD, LONDON

THE LONDON BOROUGH OF NEWHAM ALONG WITH THE LONDON THAMES GATEWAY DEVELOPMENT CORPORATION AND DESIGN FOR LONDON HAVE WORKED TOGETHER TO CREATE MAJOR IMPROVEMENTS TO STRATFORD HIGH STREET THROUGH RENEWING PAVEMENTS, ROAD RE-SURFACING, PLANTING AND STREET FURNITURE.

Applying our strengths in innovation, Aggregate Industries developed a range of custom made 'Stratford' Ultrapave paving products that were specifically designed to provide a durable and vibrant streetscape design using three shades of grey.

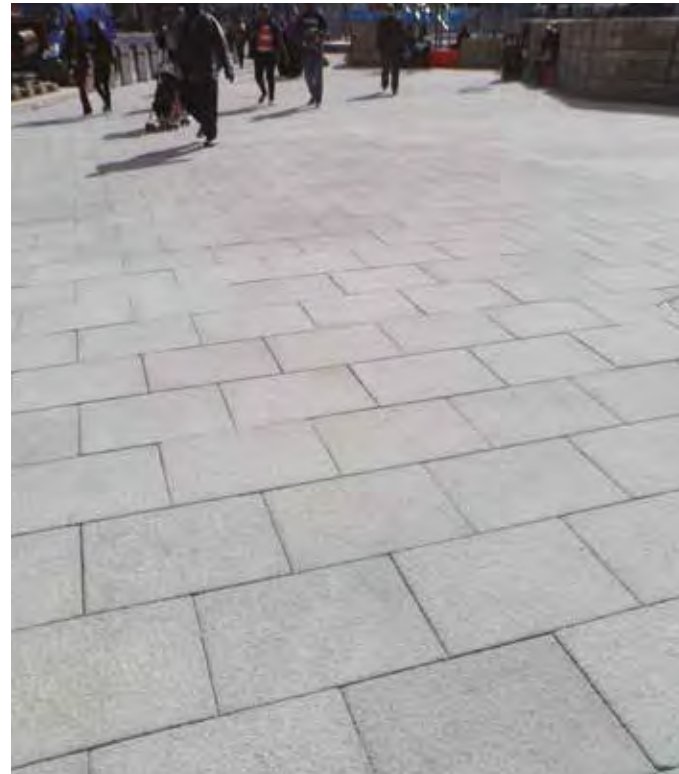
Now a new metropolitan centre for East London, Aggregate Industries has helped change the face of Stratford in time for the London 2012 Olympics and for future generations to come.

MATERIALS SUPPLIED: STRATFORD ULTRAPAVE FLAG PAVING: 20,000M², STRATFORD ULTRAPAVE BLOCK PAVING: 5,000M², SILVER GREY GRANITE KERBS: 3,200 LM

CLIENT: ODA & LB Newham

MASTERPLANNER & SPECIFIER: EDAW / Aecom

CONTRACTOR: Ringway Jacobs





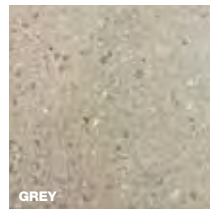
CONCRETE PAVING



ACADEMY



ACADEMY PROVIDES THE BEST OF BOTH WORLDS. AN AFFORDABLE COMMERCIAL PAVING THAT DOES NOT COMPROMISE ON AESTHETIC APPEAL.



GREY

Providing an attractive appearance without the need for added pigment, Academy is a low cost textured paving that provides an economical solution for the commercial environment.

Academy uses aggregates local to the manufacturing plant for a reduced carbon footprint, and utilises a hydraulically wet pressed manufacturing process. It's available in step units made to order.

ACADEMY PRODUCT DATA

Sizes (mm)	400x400	450x450	450x450
Thickness (mm)	65	50	70



ACADEMY PAVING, LOXFORD SCHOOL, LOXFORD, LONDON



NIGHTTEC PAVING SHOWING ITS LUMINOUS PROPERTIES



NIGHTTEC **n55**Plus

TRUE INNOVATION FOR THE
COMMERCIAL ENVIRONMENT.

NIGHTTEC IS A PHOTO LUMINOUS
BLOCK PAVING PRODUCT THAT
GLOWS IN THE DARK.

Nighttec takes paving innovation to a new level. Containing photo luminous crystals that glow in the dark, the product is charged during the day by sun or daylight (UV light) and will continue to emit light for up to 10 hours. Contains photo luminous crystals which glow in the dark.

Nighttec is non toxic and non radio-active. It's available in a photo luminous blue-green colour.

NIGHTTEC PRODUCT DATA

Size (mm)	100x100
Thickness (mm)	80

SEE PAGE 109 FOR FULL PRODUCT DATA.



APPALACHIAN®



COMBINING A TRADITIONAL APPEARANCE WITH ADVANCED MANUFACTURING TECHNIQUES, **APPALACHIAN** PROVIDES EXCEPTIONAL DURABILITY WITH AN AFFORDABLE PRICE.

A premium but cost effective paving, Appalachian incorporates uniquely formulated granite aggregates to provide optimum performance, durability and visual appeal. The product also offers environmental benefits containing up to 75% recycled or reclaimed material.

Appalachian is available in range of colours and textures that can be used to complement and contrast with one another. The product is available in step units made to order.



APPALACHIAN FLAG PRODUCT DATA

Size (mm)	600x600	450x450	450x450	400x400	400x400
Thickness (mm)	50	70	70	65	65
Colour available	Gy	Gy, BF, Ch*	Gy*	Gy, BF, Ch, L	Gy*, L*

SEE PAGE 109 FOR FULL PRODUCT DATA.

Gy - Grey / BF - Black Fleck / Ch - Charcoal / L - Leemoor.

* MTO with minimum order of 250 packs for the 450x450 and 300 packs for the 400x400.

† Represents non-primary material within the complete mix design.



APPALACHIAN, RIVERSIDE QUARTER



CASE STUDY: BUS STATION, CHATHAM WATERFRONT, KENT

MATERIALS SUPPLIED: APPALACHIAN (GREY)

CLIENT: Medway Council

ARCHITECT: Gillespies Landscape Architects

CONSULTANT/ENGINEER: Mott MacDonald

MAIN CONTRACTOR: F.M Conway

CONTRACTOR: Morgan Sindall



AS PART OF THE WIDER REGENERATION AND DEVELOPMENT OF THE MEDWAY REGION - A BUS STATION WAS CREATED IN THE TOWN OF CHATHAM.

This is now the main hub for all the town's bus routes, and opens up the town's waterfront connecting it with Chatham's centre - Medway's largest shopping area.

Gillespies has designed new high quality, pedestrian-friendly public spaces that complement the design of the new bus station, and help to meet the strategic growth objectives of Medway.



The public spaces were paved with our Appalachian Grey flag paving to help integrate the bus station with the rest of the town, and play a vital role in linking it to key amenities such as the waterfront, the heritage park and the retail centre



MOORDALE® GROUND

FEATURING YORKSTONE AGGREGATES, **MOORDALE GROUND** IS A HIGH QUALITY FLAG PAVING THAT OFFERS EXCELLENT PERFORMANCE AND DURABILITY.

By incorporating Yorkstone aggregates, Moordale Ground offers a combination of textural appeal and exceptional strength. A high quality solution available at an affordable price, it's ideal for urban pavements, shopping precincts and areas with occasional car, HGV or mechanical sweeper overrun.

Available in two colours, Moordale Ground can be used to create large areas of warm solid colour or to complement one another and provide subtle contrast. The product comes in step units that are made to order.



MOORDALE, GROUND GREY, PARAGON INTERCHANGE, HULL

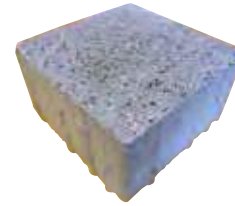
MOORDALE GROUND PRODUCT DATA

Size (mm)	600x600	450x450	450x450	400x400	400x400	400x400
Thickness (mm)	50	70	50	65	65	50

SEE PAGE 109 FOR FULL PRODUCT DATA.



VIANOVA BLOCK PAVING INSTALLATION, LEICESTER



VIANOVA

n55Plus



LIGHT GREY



DARK GREY



ANTHRACITE CHARCOAL

A PERFECT SOLUTION FOR MODERN CITYSCAPES, **VIANOVA** IS A CONTEMPORARY RANGE OF ELEGANT BLOCK PAVING WITH A SPARKLING FINISH.

Vianova calls upon the finest basalt and granite aggregates to create an attractive contemporary polished paving. Recycled aggregates are added to the surface to create a distinctive sparkle and provide a perfect finishing touch.

Vianova is available multi-sized to facilitate creative laying patterns. It also incorporates a unique interlocking spacer design to help prevent pavement creep and allow greater laying patterns in trafficked areas.

VIANOVA PRODUCT DATA

Sizes (mm)	600x200	400x200	200x200	200x100
Thickness (mm)	80	80	80	80

SEE PAGE 109 FOR FULL PRODUCT DATA.



COUNTRYSETTS



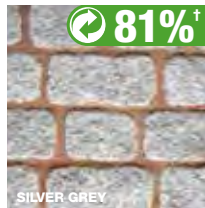
BES 6001
Responsible Sourcing
www.green-setts.co.uk

Life n55Plus

AN ALTERNATIVE TO NATURAL GRANITE, **COUNTRYSETTS** ADD A RUSTIC LOOK AND FEEL TO PRESTIGIOUS PEDESTRIAN ENVIRONMENTS.

Introduce rustic charm to the commercial landscape with Countrysetts. Made using 81% recycled or reclaimed material, they represent an environmental alternative to natural granite rumbled setts, and also offer laying cost savings due to tighter dimensional tolerances.

Available in a wide range of sizes, Countrysetts allow you to create random patterns and areas of delineation using consistent depths. A perfect solution for either large scale formal spaces or more intimate areas, they are suitable for vehicular overrun if set in concrete.



COUNTRYSETTS PRODUCT DATA

Sizes (mm)	220x100	97x100
Thickness (mm)	102	102

SEE PAGE 110 FOR FULL PRODUCT DATA.

† Represents non-primary material within the complete mix design.



WOBURN RUMBLED, TWICKENHAM STADIUM



WOBURN RUMBLED



AUTUMN



RUSTIC



GRAPHITE

WOBURN RUMBLED LENDS TRADITIONAL CHARACTER AND VISUAL APPEAL TO ANY COMMERCIAL PROJECT WITH ITS ATTRACTIVE TIMEWORN AND WEATHERED APPEARANCE.

Featuring a natural appearance, reminiscent of traditional sandstone setts, Woburn Rumbled is a cobble paving suited to a wide range of environments – from heritage sites through to modern street projects.

A number of colour mix options allow subtle shade differences between adjacent blocks. While a wide range of sizes can be used in large scale formal spaces or more intimate areas, or to create random patterns and area delineations. Woburn Rumbled is available as an Infiltra concrete block permeable paver.

WOBURN RUMBLED PRODUCT DATA

Sizes (mm)	201x134	134x134	100x134	201x134	134x134	100x134
Thickness (mm)	80	80	80	60	60	60

SEE PAGE 110 FOR FULL PRODUCT DATA.



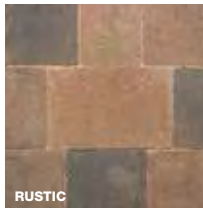
WOBURN ORIGINAL



FOR A PRACTICAL AND HARDWEARING PAVING SOLUTION THAT ALSO OFFERS A DEGREE OF STYLE AND SUBTLETY, **WOBURN ORIGINAL** FITS THE BILL PERFECTLY.

Woburn Original offers excellent visual appeal with its contemporary appearance recalling the look and feel of natural sandstone setts.

Flexible and versatile, the various colour options can be mixed to achieve subtle shade differences between adjacent blocks. The broad range of sizes allows the creation of random patterns and area delineations, as well as accommodating large-scale formal spaces or smaller areas.

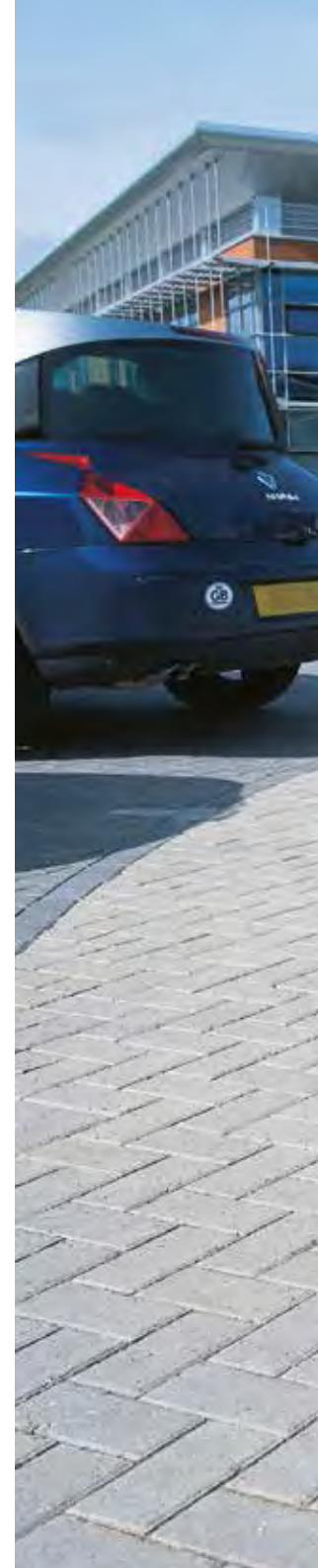
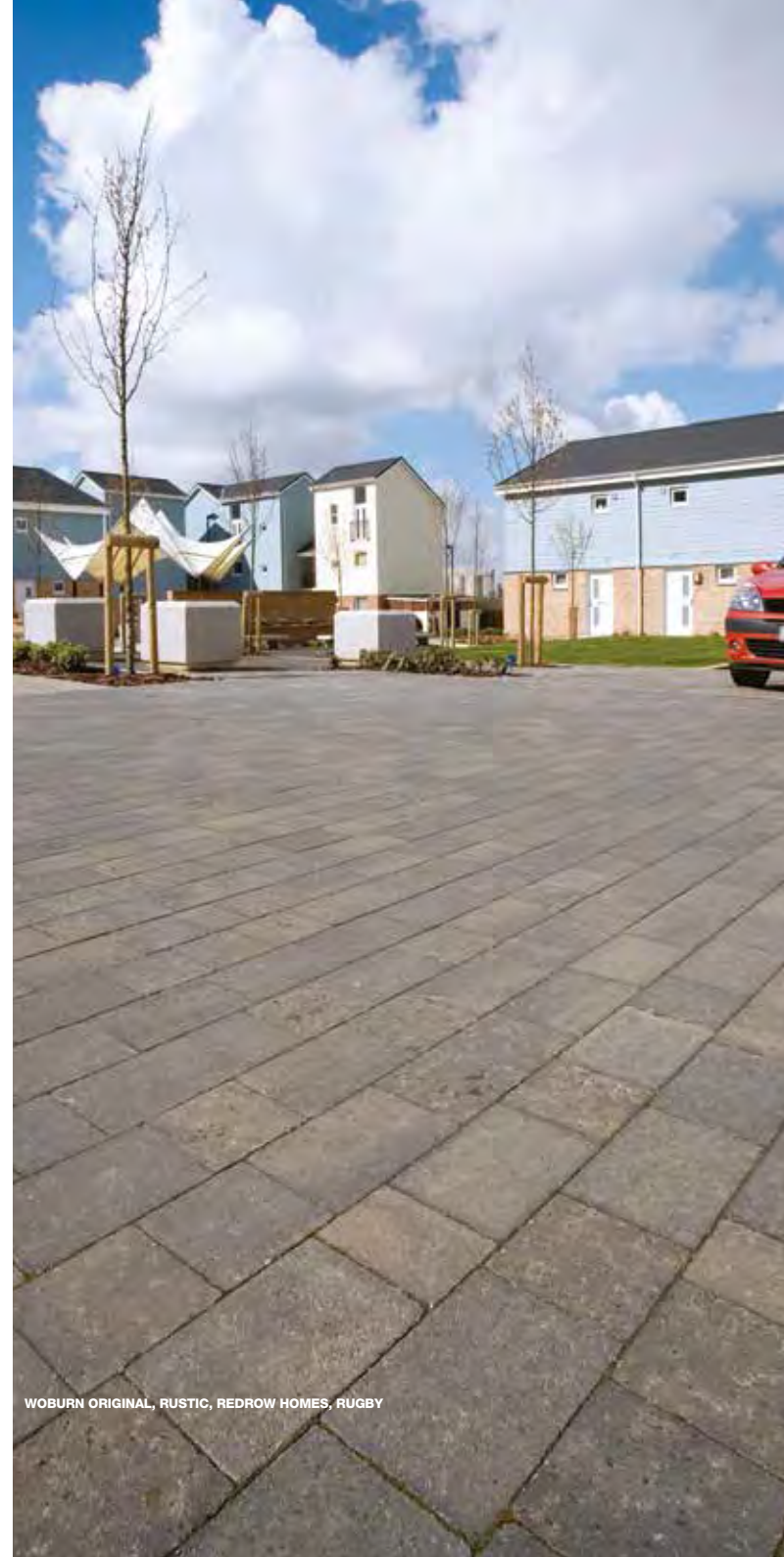


WOBURN ORIGINAL PRODUCT DATA

Sizes (mm)	201x134	134x134	100x134	201x134	134x134	100x134
Thickness (mm)	80	80	80	60	60	60

SEE PAGE 110 FOR FULL PRODUCT DATA.

† Represents non-primary material within the complete mix design.



WOBURN ORIGINAL, RUSTIC, REDROW HOMES, RUGBY



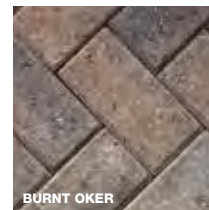
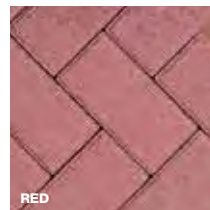
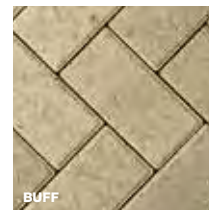
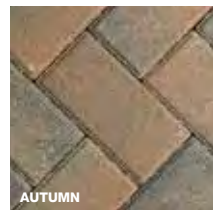
EUROPA, GREY, STELLA HOUSE, NEWCASTLE

TECHNICAL INFORMATION
www.aggregate.com/europa

CAST PAVING



EUROPA (INCLUDING MECHANICAL LAY)



IDEAL FOR WITHSTANDING THE RIGOURS OF HEAVY USE TRAFFICKING, **EUROPA** IS A TOUGH, HARDWEARING BLOCK THAT ALSO COMES IN AN ARRAY OF DIFFERENT COLOURS TO OFFER EXCELLENT VISUAL APPEAL.

Europa blends style with practicality. The product is superbly durable, offers good grip and is easily lifted for access services. With a wide range of shades including three mixed colours, Europa offers excellent aesthetic appeal.

Available in a number of variations to meet specifications such as pencil edge and coloured coatings, Europa also comes in a mechanical lay (ML) option for increased speed and efficiency of operation and as an Infiltra concrete block permeable paver.

EUROPA PRODUCT DATA

Sizes (mm)	200x100	200x100	200x100
Thickness (mm)	80	60	65
Colours available	Gy, Rd, Ch, Bf, BO, Br, Au*	Gy, Rd, Ch, Bf, BO, Br, Au	Gy

EUROPA ML PRODUCT DATA

Size (mm)	200x100 ML
Thickness (mm)	80
Colours available	All*

SEE PAGE 110 FOR FULL PRODUCT DATA.

Gy - Grey / Rd - Red / Ch - Charcoal / Bf - Buff / BO - Burnt Oker / Br - Brindle / Au - Autumn.
 * MTO with minimum order of 240 packs.

CONCRETE PAVING

INFILTA BLOCK PAVING, SPORTS VILLAGE, SALFORD, GREATER MANCHESTER





Our SUDS offer includes a range of permeable surfaces (block paving, asphalt and concrete) with aggregate sub-base for a range of applications. Please contact the Charcon technical department for further details on our full SUDS capability.

 **Sustainable Drainage Systems**

INFILTA



HARDWEARING AND DURABLE, **INFILTA** IS A CONCRETE BLOCK WITH A DIFFERENCE - IT FORMS A PERMEABLE HARD LANDSCAPED SURFACE TO PROVIDE WATER INGRESS FOR SUSTAINABLE DRAINAGE SYSTEMS.

Infilta is a permeable block tough enough to cope with heavy-use trafficking, but also capable of allowing water ingress for sustainable drainage systems (SUDS). Each interlocking unit features a 5mm nib, enabling water to pass through to the sub-base water storage system below.

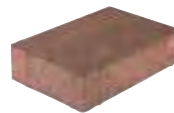
Suitable for all pedestrianised areas, shopping precincts, loading areas and access roads, Infilta is available in a range of colour mix and texture options that offer excellent visual appeal.

INFILTA



COLOUR AVAILABILITY
BRINDLE, GREY, CHARCOAL, RED AND AUTUMN

WOBURN ORIGINAL



COLOUR AVAILABILITY
GRAPHITE OR RUSTIC

WOBURN RUMBLED



COLOUR AVAILABILITY
AUTUMN, GRAPHITE OR RUSTIC

ECOPAWE INFILTA



COLOUR AVAILABILITY
BLACK FLECK (GROUND), GREY FLECK (TEXTURED) OR BUFF FLECK (TEXTURED)

ANDOVER TEXTURED



COLOUR AVAILABILITY
WHITE, LIGHT GREY, SILVER GREY, MIDNIGHT GREY, CREAM, CHESTNUT, OAK OR SILVER FLECK

ANDOVER WASHED



COLOUR AVAILABILITY
SILVER GREY OR ANTHRACITE CHARCOAL

STONEMASTER® INFILTA



COLOUR AVAILABILITY
LIGHT BUFF, MEDIUM BUFF, DARK BUFF, LIGHT GREY, MEDIUM GREY OR DARK GREY

INFILTA PRODUCT DATA								
	Infilta	EcoPave Infilta*	StoneMaster Infilta*	Andover Textured Infilta*	Andover Washed Infilta*	Woburn Original Infilta*	Woburn Rumbled Infilta*	Woburn Rumbled Infilta
Sizes (mm)	200x100	200x100*	200x100*	200x100*	200x100*	201x134*, 134x134, 100x134	201x134, 134x134, 100x134	201x134, 134x134, 100x134
Thickness (mm)	60/80	80	80	80	80	60	60	80

SEE PAGE 111 FOR FULL PRODUCT DATA.
* MTO with minimum order of 240 packs.
* Also available in 200x134mm, 134x134mm and 100x134mm as MTO item.

CASE STUDY: BARKING RIVERSIDE, LONDON

MATERIALS SUPPLIED: INFILTA GREY PERMEABLE BLOCK PAVING, STONEMASTER LIGHT GREY AND MEDIUM GREY, ANDOVER WASHED ANTHRACITE CHARCOAL, ECOKERB AND EDGINGS

BARKING RIVERSIDE IS ONE OF THE LARGEST DEVELOPMENT SITES IN LONDON (185 HECTARES), AND IS ONE OF THE MOST AMBITIOUS AND IMPORTANT NEW DEVELOPMENTS IN THE UK. THE VISION WAS TO PROVIDE A MODEL FOR SUSTAINABLE LIVING IN THE 21ST CENTURY WHERE BEST PRACTICE IS USED THROUGHOUT.

Barking Riverside has been built on the former Barking Power Station site and so making it developable has required land remediation, site clearance and changes to land levels to plan for flood risk.

With 40% of the development designed as green space, our Infilta block paving provided a permeable surface to the hard landscaped areas, allowing water filtration through the paving and mitigating flood risk across the site.

With sustainable living at the heart of this project, our Infilta block paving helped tackle the necessary drainage requirements while our natural stone replica paving, StoneMaster, provided a wonderful landscape setting with up to 57% non primary materials within its mix.

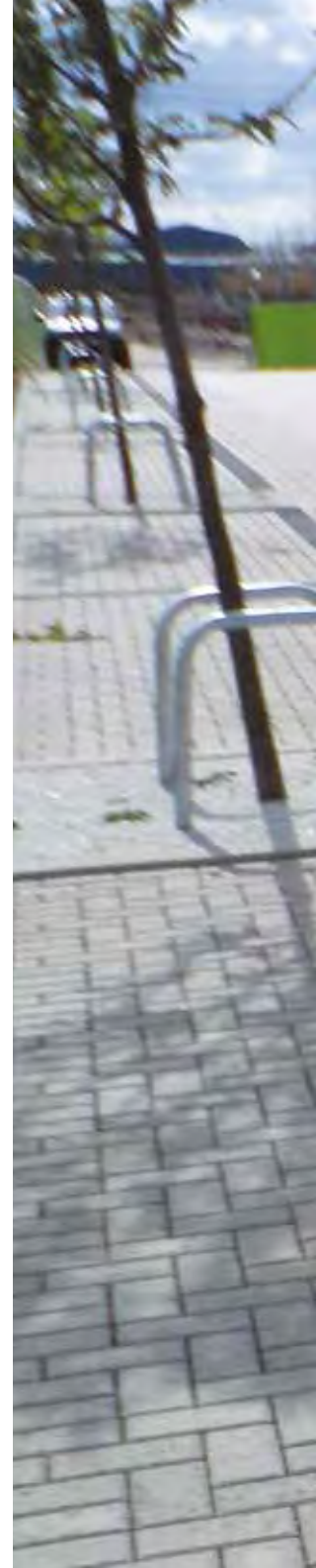
CLIENT: Barking Riverside Limited (a JV between Bellway Homes plc and the Homes and Communities Agency)

PROJECT PARTNERS: LB Barking & Dagenham, Southern Housing Group and the London Thames Gateway Development Corporation

MASTERPLANNER: Sheppard Robson

LANDSCAPE ARCHITECT: D. F. Clark Bionomique

PLOT CONTRACTOR: Mace with O'Keefe





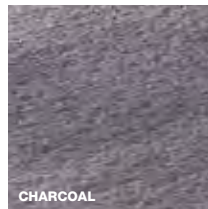


COURTSTONE

BES 6001
Responsible Sourcing
www.environment.gov.uk

n55Plus

COURTSTONE IS A HARDWEARING PAVING REPLICATING CAITHNESS STONE, FEATURING A DETAILED RIVEN PROFILE THAT TAKES INSPIRATION FROM NATURAL STONE MASTERS.



Characterised by a deep charcoal colour that echoes the look and feel of Caithness stone paving, Courtstone is an exceptionally durable paving.

Available in sizes designed to reflect quarried flagstone sizes, it incorporates a non-slip riven finish and is ideal for urban pavements, shopping precincts and areas with occasional car, HGV or mechanical sweeper overrun.

COURTSTONE PRODUCT DATA

Sizes (mm)	900x600	750x600	600x600	600x450	450x450
Thickness (mm)	63	63	63	63	63

SEE PAGE 111 FOR FULL PRODUCT DATA.



COURTSTONE, STANLEY ROAD, BOOTLE (SHOWN WITH MOORDALE)



TECHNICAL INFORMATION
www.aggregate.com/grassgrid



GRASSGRID



GRASSGRID IS AN INGENUOUS INTERLOCKING CAVITY GRID SYSTEM THAT CAN PROVIDE NATURAL LOOKING HARD STANDING FOR VEHICLES AND STRENGTHENING OF EMBANKMENTS.

With its unique in-built pyramid shapes, Grassgrid offers exceptional strength and is the ideal solution for embankments and water courses, not to mention a variety of trafficked applications and permeable installations where specifications marry hard and soft landscaping.

Grassgrid also boasts excellent sustainability credentials containing up to 50% recycled or reclaimed material.

GRASSGRID PRODUCT DATA

Size (mm)	366x274
Thickness (mm)	100

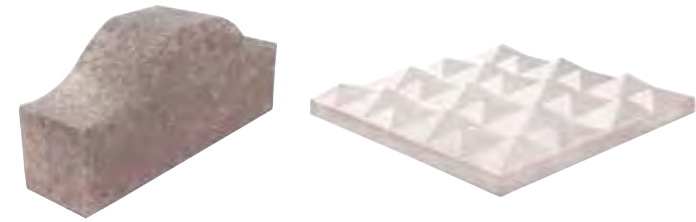
SEE PAGE 111 FOR FULL PRODUCT DATA.
† Represents non-primary material within the complete mix design.



GRASSGRID, ASHBOURNE DERBYSHIRE

TECHNICAL INFORMATION
www.aggregate.com/elite

PROFILED PAVING



FORMAT 2 - GREY

FORMAT 3 - WHITE

ELITE



A DETERRENT PAVING THAT BLENDS FUNCTION WITH FLAIR, **ELITE** IS THE IDEAL SOLUTION FOR AREAS WHERE VEHICULAR AND PEDESTRIAN USE IS UNWELCOME.



FORMAT 2 - GREY



FORMAT 3 - WHITE

Elite is a deterrent paving that also looks the part, combining practicality with aesthetic appeal. It is designed to be used for use in areas where pedestrian or vehicle access is discouraged and is available in two formats:

Format 2 – deterring pedestrian and vehicular access with defined footway ‘no go’ zones and speed hump traffic calming components

Format 3 – deterring all pedestrian and vehicular access

Although not encouraged, Elite can accept occasional traffic overrun.

ELITE PRODUCT DATA

Sizes (mm)	298x80	600x600
Format	2	3
Thickness (mm)	90-132	74

SEE PAGE 111 FOR FULL PRODUCT DATA.



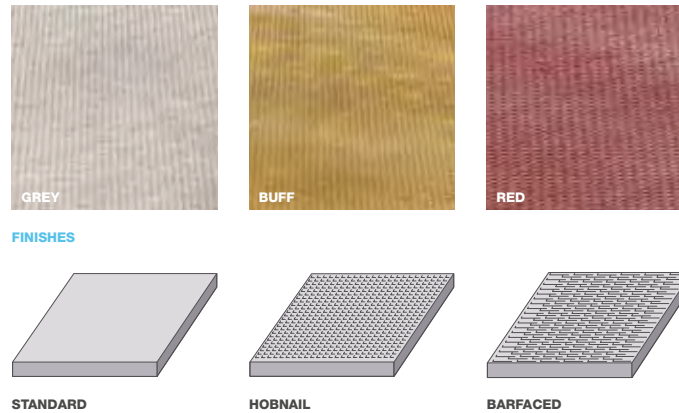
BRITISH STANDARD PAVING



BRITISH STANDARD PAVING IS HYDRAULICALLY PRESSED CONCRETE PAVING. THE PERFECT CHOICE WHEN A STANDARD FLAG PAVING SOLUTION IS REQUIRED.

Manufactured using local aggregates to minimise unnecessary haulage, British Standard Paving is a cost effective paving solution that complies with all relevant British Standards.

British Standard paving comes in three colour options, an extensive range of sizes and in Standard, Hobnail and Barfaced finishes. Dished and fluted paving are also available to order.



BRITISH STANDARD PAVING PRODUCT DATA

Size (mm)	600x450	600x450	600x600	600x600	600x600	750x600	750x600	900x600	900x600	900x300
Finish	Standard	Standard	Standard	Standard	Standard	Standard	Standard	Standard	Standard	Standard
Thickness (mm)	50	63	37	50	63	50	63	50	63	50
Colour available	Gy, Bf	Gy	Gy	Gy, Bf, Rd	Gy, Bf, Rd	Gy, Bf, Rd	Gy	Gy, Bf, Rd	Gy	Gy
Size (mm)	600x300	400x200	300x300	400x400	400x400	450x450	450x450	450x450	600x600	900x600
Finish	Standard	Standard	Standard	Standard	Standard	Standard	Standard	Standard	Barface	Barface
Thickness (mm)	50	65	60	50	65	50	50	70	50	50
Colour available	Gy	Gy	Gy	Gy	Gy, Bf	Gy, Bf	Gy	Gy	Gy, Bf	Gy

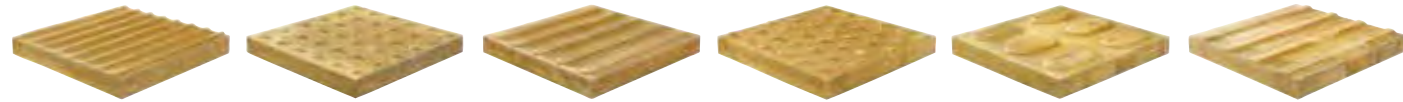
SEE PAGE 112 FOR FULL PRODUCT DATA.

Gy - Grey / Bf - Buff / Rd - Red.
Other shades may be available on a MTO basis. Please check with sales office.





TACTILE PAVING, © BRISTOL



HAZARD WARNING PAVING

BLISTER PAVING

GUIDANCE PAVING

PLATFORM EDGE WARNING
(OFFSET BLISTER)

PLATFORM EDGE WARNING
(LOZENGE)

CYCLEWAY PAVING

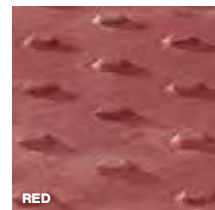
BRITISH STANDARD TACTILE



GREY



BUFF



RED



CHARCOAL

DESIGNED WITH THE NEEDS OF THE VISUALLY IMPAIRED IN MIND, **BRITISH STANDARD TACTILE** MEETS THE DEPARTMENT FOR TRANSPORT'S GUIDANCE ON THE USE OF TACTILE PAVING SURFACES.

A durable and hardwearing range of paving that is available in a range of colours, British Standard Tactile is ideal for typical pedestrian usage.

Available in a range of colours to suit specific guidelines for specific areas, British Standard Tactile has been designed to assist visually impaired pedestrians by providing the indication of hazard areas and safe travel routes.

Available in six surface profiles:

- Hazard Warning Corduroy
- Blister
- Guidance
- Platform Edge Warning (Offset Blister)
- Platform Edge Warning (Lozenge)
- Cycleway.

BRITISH STANDARD TACTILE PRODUCT DATA

Sizes (mm)	450x450	450x450	400x400	400x400	400x400	400x400	400x400	400x400
Finish	Blister	Blister	Blister	Blister	Hazard Warning Corduroy	Platform Edge Lozenge/Offset Blister	Guidance	Cycleway
Thickness (mm)	50	70	50	65	50	50	50	50
Colours Available	Bf, Rd	Bf, Rd	Gy, Bf, Rd, Ch	Gy, Bf, Rd, Ch	Gy, Bf, Ch	Bf	Bf, Ch	Gy, Bf

SEE PAGE 112 FOR FULL PRODUCT DATA.

Gy - Grey / Bf - Buff / Rd - Red / Ch - Charcoal.

Other shades may be available on a MTO basis. Please check with sales office.



KERBS

86-87 ECOKERB®

88-89 COUNTRYSIDE CLASSIC® KERB

90 K-LITE® TRADITIONAL KERB

91 CAIRNHILL® KERB

92 BLOCK KERB

93 ACCESS KERB

93 HGV KERB

94 BRITISH STANDARD KERB

95 BRITISH STANDARD EDGING

96 CHARCON DURAKERB



QUICK PRODUCT GUIDE

ECOKERB®



COLOURS

Black Fleck (textured)

PAGE

86-87

COUNTRYSIDE CLASSIC® KERB



COLOURS

Silver Grey (textured)

PAGE

88-89

K-LITE® TRADITIONAL KERB



COLOURS

Dark Grey
Silver Grey

PAGE

90

CAIRNHILL® KERB



COLOURS

Charcoal

PAGE

91

BLOCK KERB



COLOURS

Non-rumbled Europa:
Red, Charcoal and Brindle
Woburn Rumbled:
Rustic, Autumn and Graphite

PAGE

92

ACCESS KERB



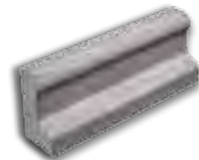
COLOURS

Grey
Silver Grey (textured)

PAGE

93

HGV KERB



COLOURS

Grey

PAGE

93

BRITISH STANDARD KERB



COLOURS

Grey

PAGE

94

BRITISH STANDARD EDGING



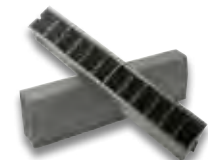
COLOURS

Grey

PAGE

95

CHARCON DURAKERB EDGING



COLOURS

Grey

PAGE

96



KERBS



ECO KERB®



BES 6001
 Responsible Sourcing
www.greenbook.be/eng

Life n55Plus

A PRODUCT WITH EXCEPTIONAL ENVIRONMENTAL CREDENTIALS. **ECO KERB** MAXIMISES THE USE OF RENEWABLE MATERIALS AND HAS BEEN DEVELOPED TO OPTIMISE RESOURCE PRODUCTIVITY.



Designed to provide edge restraint in pedestrian and vehicular applications, EcoKerb offers excellent environmental benefits with up to 82% recycled or reclaimed material content.

Two product options (Classic and Classic Wide Top) provide a choice of installed profiles, offering strong visual synergy with the Charcon flag and block paving ranges.



ECO KERB® PRODUCT DATA

Type	Classic	Classic wide top	Classic crossing	Classic radius	Classic dropper	Classic quadrant	Classic flat top edging	Classic wide top crossing	Classic wide top radius	Classic wide top dropper	Classic step insert	Classic wide top step insert
Length (mm)	914	914	914	780	914	n/a	914	914	780	914	914	914
Height (mm)	255	205	150	255	255-150	150	150	205	205-100	205	255	205
Width (mm)	145	290	145	145	145	R305	50	290	290	290	145	290

SEE PAGE 113 FOR FULL PRODUCT DATA.

† Represents non-primary material within the complete mix design.



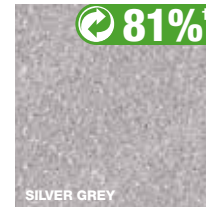
COUNTRYSIDE CLASSIC® KERB



COUNTRYSIDE CLASSIC KERBS ARE PARTICULARLY SUITED TO A TRADITIONAL OR CONSERVATION ENVIRONMENTS, THANKS TO A NATURAL TEXTURED AND VISUALLY APPEALING APPEARANCE.

Ideal for where product appearance is important, Countryside Classic Kerb is a product that provides exceptional visual appeal with its textured appearance. It also boasts excellent environmental benefits containing up to 81% recycled or reclaimed material.

Designed to provide edge restraint in pedestrian and vehicular applications, Countryside Classic Kerb is available in two options – Classic and Classic Wide Top. The product complements Charcon's flag and block paving ranges.



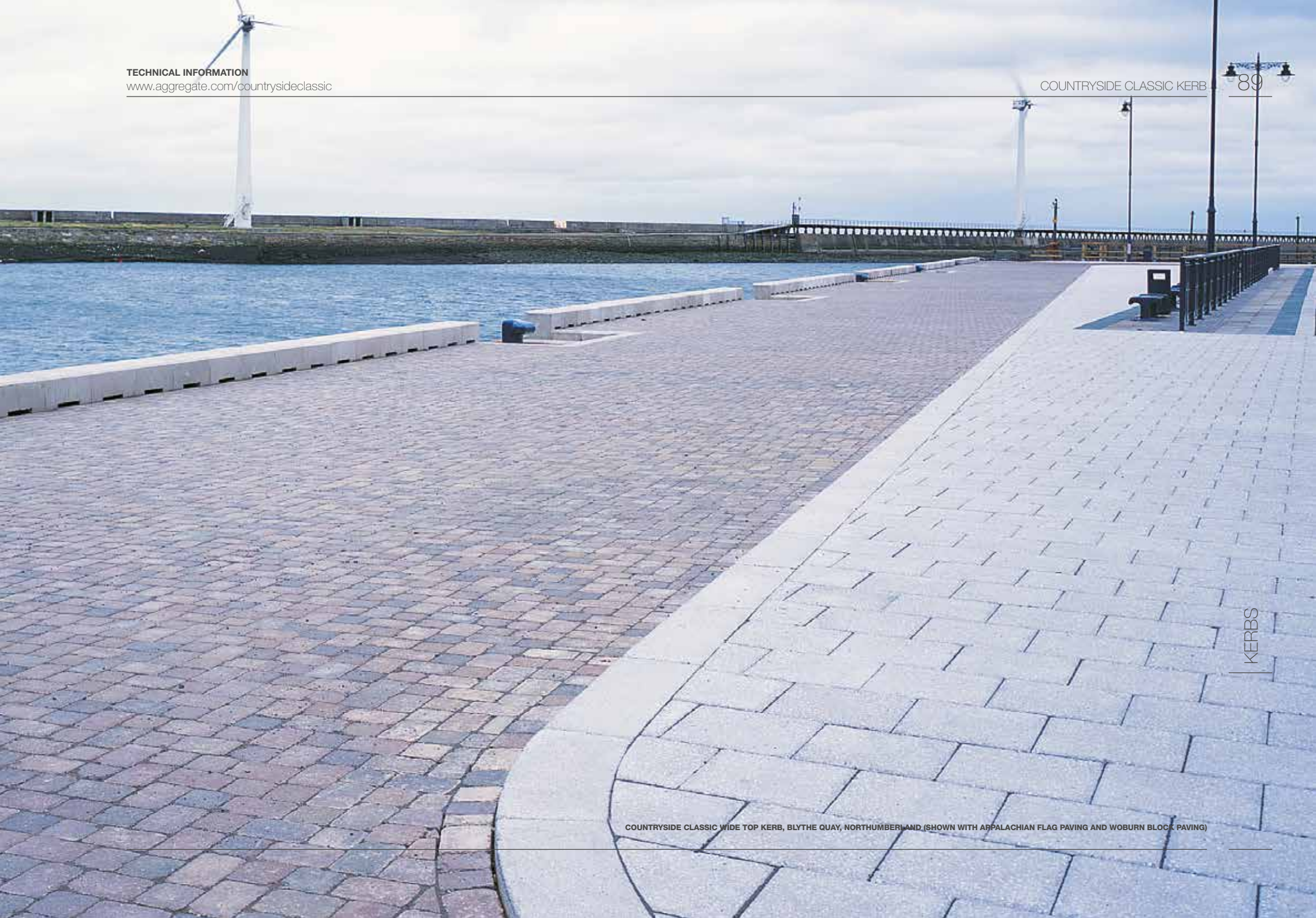
KERBS

COUNTRYSIDE CLASSIC® PRODUCT DATA

Type	Classic	Classic	Classic wide top	Classic crossing	Classic crossing	Classic radius	Classic radius	Classic dropper	Classic dropper	Classic quadrant	Classic quadrant
Length (mm)	914	914	914	914	914	780	780	914	914	n/a	n/a
Height (mm)	255	255	205	150	150	255	255	255-150	255-150	255	255
Width (mm)	125	145	290	125	145	125	145	125	145	R305	R305
Type	Classic internal angle	Classic external angle	Classic flat top edging	Classic wide top crossing	Classic wide top radius	Classic wide top dropper	Square edge internal angle	Square edge external angle	Wide top internal angle	Wide top external angle	
Length (mm)	n/a	n/a	914	914	780	914	n/a	n/a	n/a	n/a	
Height (mm)	255	255	150	100	205	205-100	255	255	205	205	
Width (mm)	125	125	50	290	290	290	145	145	290	290	

SEE PAGE 113 FOR FULL PRODUCT DATA.

† Represents non-primary material within the complete mix design.



KERBS

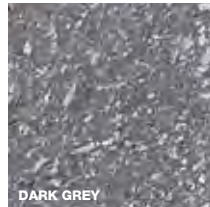
COUNTRYSIDE CLASSIC WIDE TOP KERB, BLYTHE QUAY, NORTHUMBERLAND (SHOWN WITH APPALACHIAN FLAG PAVING AND WOBURN BLOCK PAVING)



K-LITE® TRADITIONAL



LIGHTWEIGHT AND EASY TO HANDLE, **K-LITE TRADITIONAL** KERBS ARE A DURABLE AND HARDWEARING REPLACEMENT FOR NATURAL GRANITE.



Designed to provide edge restraint in pedestrian and vehicular applications, K-Lite Traditional kerbs are a split stone reproduction of natural granite with a weathered top edge.

Light in weight and manufactured to meet HSE guidelines, K-Lite Traditional has been designed to offer strong visual synergy with other flag and block paving in the Charcon range.



K-LITE™ TRADITIONAL KERB, TRURO, CORNWALL

KERBS

K-LITE TRADITIONAL PRODUCT DATA

Type	Kerb	Kerb
Length (mm)	440	290
Height (mm)	140	215
Width (mm)	100	100



DOLLAR ACADEMY, STIRLING



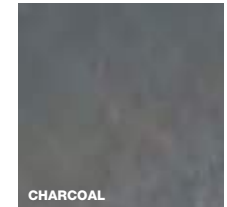
CAIRNHILL®



BES 6001
 Responsible Sourcing
www.greenbook.ie/revm

n55Plus

AN AESTHETICALLY PLEASING AND NATURAL LOOKING KERB FOR ALL ENVIRONMENTS, **CAIRNHILL** HAS BEEN SPECIFICALLY DESIGNED TO REPLICATE NATURAL WHIN KERBS.



CHARCOAL

Cairnhill provides edge restraint in pedestrian and vehicular applications. The product combines visual appeal with durability, with an appearance that imitates the look and feel of natural whin kerbs.

Cairnhill has a non-slip finish and is perfectly at home in urban and rural environments.

CAIRNHILL PRODUCT DATA

Type	Kerb	Kerb
Length (mm)	914	914
Height (mm)	255	150
Overall width (mm)	125	125

SEE PAGE 114 FOR FULL PRODUCT DATA.



BLOCK KERB



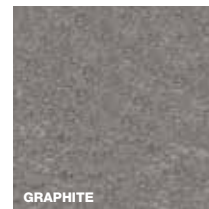
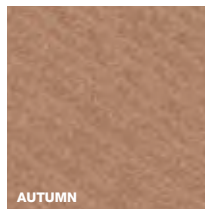
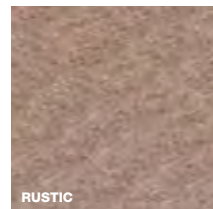
DURABLE AND TOUGH, **BLOCK KERB** IS AN EVER-POPULAR RANGE OF EDGE RESTRAINT KERBING THAT IS AVAILABLE FROM STOCK IN A VARIETY OF COLOURS.

Designed to provide edge restraint in pedestrian and vehicular applications. Block Kerb provides subtle alternative to more traditional kerbs. With a range of colours that complement Europa and Woburn block paving. A versatile product, Block Kerb allows kerbing around irregular or complex shapes.

NON-RUMBLED EUROPA



WOBURN RUMBLED



BLOCK KERB PRODUCT DATA

Type	Large Europa	Medium Europa	Small Europa	Woburn Rumbled
Length (mm)	100	100	100	100
Height (mm)	200	150	125	200
Width (mm)	125	150	125	125
Colour available	Rd, Ch, Br	Ch	Rd, Ch, Br	Ru, Au, Gr



BLOCK KERB INSTALLATION



ACCESS KERB



AN AWARD-WINNING PRODUCT TAKING KERBS TO A NEW LEVEL. **ACCESS KERB** IS AVAILABLE IN VARIOUS HEIGHT AND PROFILE OPTIONS TO PROVIDE LEVEL ENTRY ACCESS TO STANDARD OR GUIDED BUSES.

Access Kerb incorporates integral marker bumps to assist bus platform positioning immediately adjacent to the kerb. Designed to withstand bus wheel impact, it also offers a comprehensive range of transitional units and accessories that enable progressive construction from British Standard kerbs.

Access Kerb is available in two colours, Grey and Silver Grey.



ACCESS KERB PRODUCT DATA

Type	220* [^]	180~	160*	180 GB**
Profile	Standard	Standard	Standard	Guided buses
Dimensions (mm)	1000L x 350H x 323/271W	1000L x 310H x 310W	1000L x 290H x 276/224W	1000L x 310H x 260W
Colour available	Gy	Gy, SG***	Gy	Gy

SEE PAGE 114 FOR FULL PRODUCT DATA.

[^] Quadrants also available for these sizes.
~ Only available with marker bump.

* Available with or without marker bump.
** Guided bus, only available without marker bump.



HGV KERB



THE KERB PRODUCT THAT OUTPERFORMS ALL OTHERS. WITH ITS EXCEPTIONAL STRENGTH, **HGV KERB** HAS BEEN SPECIFICALLY DESIGNED TO KEEP VEHICLES WHERE THEY BELONG - ON THE ROADWAY.

When it comes to withstanding vehicular damage and HGV wheel impact, the performance of HGV Kerb is unrivalled. This high strength anti-vehicular kerb incorporates a unique profile that directs vehicles impacting on the kerb back into the roadway.

HGV Kerb also features a flat front face that accepts directional signage and is able to accept dowel bars for added stability.



HGV KERB PRODUCT DATA

Type	Main unit	Half unit	Radius unit*	Dropper unit (types A&B) [^]
Dimensions (mm)	1000L x 415H x 215/310W	500L x 415H x 215/310W	Various (L) x 415H x 215/310W	1000L x 415-318H x 170/215W

SEE PAGE 114 FOR FULL PRODUCT DATA.
* Radius units: available in 36/12, 11/7, 6/4.5, 3, 2 and 1.5 metre external radius versions, plus 36/12, 11/7, 6/4.5 and 3 metre internal radius versions. All radius units are made to order.

[^] Transition units: left hand and right hand versions, types A and B are both required to create transition from HGV kerb to British Standard kerb 125x255mm HB2.

Quadrant sizes available: 415x310x90, 415x310x60, 415x310x45. Internal angle 90° angle. Dowel bars available to order.



BRITISH STANDARD KERB



PRODUCED TO ADHERE TO THE REQUIREMENTS OF THE CURRENT VERSION OF BS EN1340, **BRITISH STANDARD KERB** IS A RANGE OF KERBS, CHANNELS AND EDGING.

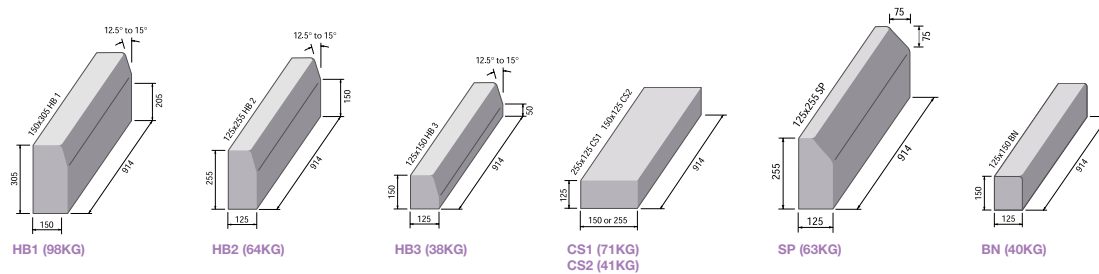
British Standard Kerb is designed to provide edge restraint in pedestrian and vehicular applications.

The product complies with British Standards and offers a range of accessories to suit a variety of applications including edgings, droppers and radius channels.



GREY

KERBS



BRITISH STANDARD KERB PRODUCT DATA

Type	HB1	HB2	HB2	HB3	BN1	BN2	BN2	BN3	BN3	SP2	SP2	SP3
Length (mm)	914	914	609	914	914	914	609	914	609	914	609	914
Height (mm)	305	255	255	150	305	255	255	150	150	255	255	150
Width (mm)	150	125	125	125	150	125	125	125	125	125	125	125

SEE PAGE 115 FOR FULL PRODUCT DATA.



BRITISH STANDARD KERB, BATTERSEA



BRITISH STANDARD EDGING, REDROW HOMES, RUGBY

BRITISH STANDARD EDGING

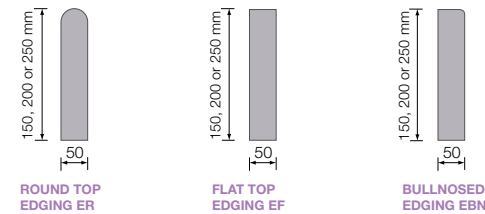
BRITISH STANDARD EDGING
 IS MANUFACTURED TO MEET
 THE CURRENT REQUIREMENTS
 OF BS EN1340.

British Standard Edging is a range that has been specially designed to restrain and edge paving.

Available in a range of heights and profiles, the range complies with relevant British Standards.



GREY



ROUND TOP
EDGING ER

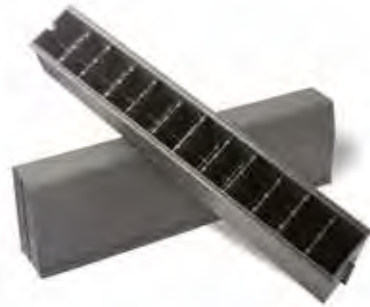
FLAT TOP
EDGING EF

BULLNOSED
EDGING EBN

BRITISH STANDARD EDGING PRODUCT DATA

Type	Flat top	Flat top	Flat top	Bullnose	Bullnose	Bullnose	Round top	Round top	Round top
Length (mm)	914	914	914	914	914	914	914	914	914
Height (mm)	150	200	255	150	200	255	150	205	225
Width (mm)	50	50	50	50	50	50	50	50	75

SEE PAGE 115 FOR FULL PRODUCT DATA.



CHARCON DURAKERB



LIGHTWEIGHT IN DESIGN AND QUICKER TO LAY, **CHARCON DURAKERB** IS A REVOLUTIONARY KERBSTONE THAT OFFERS SIGNIFICANT ENVIRONMENTAL AND HEALTH AND SAFETY BENEFITS.

Weighing just under 6kg, less than one third of the 20kg manual handling limit, Charcon Durakerb can be laid up to four times more quickly than a concrete equivalent and also mitigates repetitive strain injury. Easy to store, transport and handle, with no need for mechanical equipment, it can also be cut with hand tools and does not create any crystalline silica dust.

Charcon Durakerb uses a polymer blend containing 88% recycled material and offers a 20% reduction in carbon emissions compared with the manufacture of precast concrete units. It's also extremely durable, substantially reducing spalling, keeping remedial and maintenance costs to a minimum. Charcon Durakerb incorporates simple interlocking to ensure 100% alignment.

CHARCON DURAKERB PRODUCT DATA

Type	Straight (HB2)	Straight (BN3)	Straight (SP1)	Dropkerb LH	Dropkerb RH	External radius#	Internal radius#	External 90 angle	External 90 angle	Internal 90 angle	Internal 90 angle
Length (mm)	914	914	914	914	914	780	780	305	305	305	305
Width (mm)	125	125	125*	125	125	125	125	125	125	125	125
Depth (mm)	255	150	255	255/150	255/150	255	255	255	150	255	150

SEE PAGE 115 FOR FULL PRODUCT DATA.

* Represents non-primary material within the complete mix design.

Available in 3m, 4m, 5m, 6m, 8m and 10m internal and external radius options.



DURAKERB LAID IN A TESCO CAR PARK, SHREWSBURY



CASE STUDY: WAKEFIELD COUNCIL, YORKSHIRE

BY USING WHOLE LIFE COSTING PRINCIPLES, WAKEFIELD COUNCIL RECOGNISED THAT **CHARCON DURAKERB** OFFERED BETTER VALUE FOR MONEY THAN COMPARABLE CHEAPER TRADITIONAL PRODUCTS. THIS WHOLE LIFE COSTING APPROACH TOOK ACCOUNT OF DESIGN, RAW MATERIALS, SOURCING, MANUFACTURE, DELIVERY, USE AND DISPOSAL.

Wakefield Council traditionally used precast concrete kerb edgings when building or maintaining its 1,400km road network. The laying of traditional kerb edgings by hand involves a risk of injury to the workforce, so Wakefield Council assessed the risk of injury and took steps to reduce it. A trial was undertaken to use lightweight kerb edgings made entirely from recycled materials.

Wakefield Council recognised that the use of Charcon Durakerb would lessen the risk of injury to its staff, make use of waste material that would otherwise end up in landfill sites, and provide a better service to its road users by reducing road disruption time.

CLIENT: Wakefield County Council

MAIN CONTRACTOR: Wakefield County Council

The Council also identified the potential social, environmental and economic impacts and costs for each stage of the project when selecting Charcon Durakerb. At end of life or if no longer required, the product can be 100% recycled and the durable construction means that expensive maintenance costs are reduced. Additionally, mechanical lifting machinery is used extensively with traditional kerbs.

ENVIRONMENTAL: reduction of CO₂ emissions and waste to landfill

SOCIAL: reduced musculoskeletal injury risk and reduced long-term disabilities

ECONOMIC: whole life costing savings for the Council, reduced road closures and restrictions for the public, and reduced sick leave.

Matrix of comparison	Durakerb	Traditional kerb	Comparison
Transportation			
Loads per 38 tonnes trailer	1248 units	364 units	242% better
Weight of load	6.7 tonnes	25.1 tonnes	73% better
*CO ₂ emissions	247 kg CO ₂ e	925 kg CO ₂ e	73% better
Production			
Use of raw materials	0%	100%	100% better
Embodied carbon (manufacture)	8.7 kg but recyclable	10.5 kg	17% better
Installation (325 metres), based on installation of £10 per linear metre of bedding material			
Installer labour - 2 men	£177 per person day	£177 per person day	Same
Mechanical lifter	N/A	£16 per day	Total saving
JCB and driver	N/A	£244 per person day	Total saving
Days to install 325 metres	1.30	4.06	68% better
Damage rate	1%	5%	80% better
Installation costs	£7,299	£7,731	£432 or 5 % saving

SURFACE WATER SOLUTIONS

LINEAR DRAINAGE

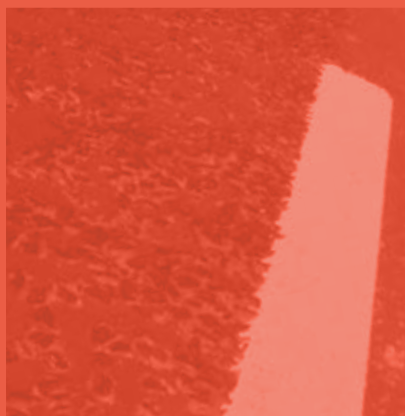
100 HIGHWAY

100 MINI HIGHWAY

101 HYDROKERB®

102 CLEARWAY®

102 SAFETICURB







HIGHWAY



AN ECONOMICAL ALTERNATIVE TO CONVENTIONAL KERB, GULLEY AND DRAIN NETWORKS, **HIGHWAY** IS A HIGH CAPACITY KERB AND DRAINAGE SYSTEM.

With its two-part high capacity channel base unit and soffit channel top unit, Highway dramatically reduces the need for expensive underground pipework along with the cost of excavation. Featuring inlet holes along the kerb line for fast and efficient water removal from the road surface, the channel stores and removes water to an outlet eliminating the need for frequently placed outlet points.

Tested to D400 to EN1433, and available in both half batter and splay profiles, Highway comes in pallet packs for easy manoeuvrability onsite and packed to avoid manual handling.

HIGHWAY PRODUCT DATA

Type	Base unit	Top unit
Length (mm)	400	400
Width (overall) (mm)	460	460
Depth (overall) (mm)	369	245



SEE PAGE 116 FOR FULL PRODUCT DATA.



MINI HIGHWAY



MINI HIGHWAY IS A ROBUST, ALL-IN-ONE KERB DRAINAGE SYSTEM OFFERING FAST, EFFECTIVE DRAINAGE.

Blending practicality with aesthetic appeal, Mini Highway is a two-part integrated kerb profile and linear drainage system offering efficient drainage capability. Comprising a base unit and kerb profile top unit with two elliptical holes, the kerb incorporates multiple inlet holes along its length for fast water take off.

Ideal for city centres with its aesthetically pleasing kerb profile, the compact design of Mini Highway minimises installation cost without compromising on strength. The system has been tested to D400 to EN1433 and is available in both half batter and splay profiles. Mini Highway is supplied on pallets for easy manoeuvrability.

MINI HIGHWAY PRODUCT DATA

Type	Base unit	Top unit
Length (mm)	500	500
Width (overall) (mm)	250	250
Depth (overall) (mm)	235, 285, 335	285



SEE PAGE 116 FOR FULL PRODUCT DATA.



HYDROKERB, WESTFIELD, DERBY



HYDROKERB®



A UNIQUE DRAINAGE SYSTEM WITH AN ATTRACTIVE TEXTURED APPEARANCE, **HYDROKERB** IS THE IDEAL SOLUTION IN CONSERVATION AREAS WHERE AESTHETIC APPEAL IS A KEY REQUIREMENT.

With its natural textured finish, Hydrokerb offers outstanding aesthetic appeal as well as excellent draining characteristics thanks to three discrete draining holes. Suitable for city roads, car parks and urban areas, the system also allows the maintenance of the existing kerb line.



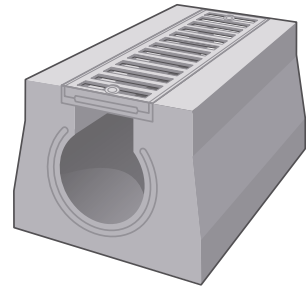
Hydrokerb is quick to lay and tested to meet the requirements of D400 to EN1433.

HYDROKERB PRODUCT DATA

Type	Top unit	Slit box top	Inflow unit	Inspection unit
Length	914	485	530	450
Width (overall) (mm)	125	305	350	125
Depth (overall) (mm)	255	243	350	255
Type	Radius unit*	Sump unit	Crossing base plate	Polymer base unit
Length	900	500	1000	1000
Width (overall) (mm)	125	320	120	130
Depth (overall) (mm)	255	710	6	250

SEE PAGE 116 FOR FULL PRODUCT DATA.

* Radii available - external and internal radius 4.5/6m, 7/11m and 12/36m on a made to order basis.



CLEARWAY®



A COST EFFECTIVE AND VISUALLY DISCRETE LINEAR DRAINAGE SYSTEM, **CLEARWAY** EFFICIENTLY REMOVES WATER AWAY FROM THE GROUND SURFACE IN HARD LANDSCAPING.

Installed flush with the hard landscaping surface, Clearway is a concealed linear drainage system that directs water away from the road or pedestrian surface.

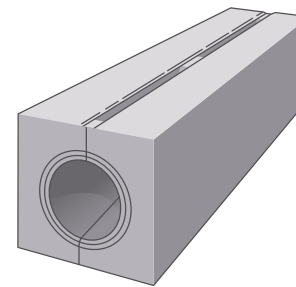
Incorporating a subtle cross fall towards the water inlet on each unit, there is no need for gullies and expensive underground connecting pipework. Clearway is easy to maintain featuring slots flared towards the drainage bore to inhibit the build-up of debris. It is also suitable for heavy duty applications.

CLEARWAY PRODUCT DATA

Type	Slot unit	Super heavy duty grid
Length (mm)	400	400
Width (overall) (mm)	324	324
Depth (overall) (mm)	257	257



SEE PAGE 116 FOR FULL PRODUCT DATA.



SAFETICURB



LONG ESTABLISHED WITH A PROVEN PERFORMANCE RECORD, **SAFETICURB** IS A LINEAR DRAINAGE SYSTEM THAT INCORPORATES DISCRETE CROSS-FALL.

Substantially reducing the need for expensive underground pipework, Safeticurb is suitable for all hard landscaped surfaces and also for heavier duty options such as industrial sites.

Available in slot or grid options, Safeticurb features a subtle cross-fall to direct surface water towards the inlet on each unit.

SAFETICURB PRODUCT DATA

Type	Standard (DBA)	Heavy duty (DBM)	Standard (DBG-DI)
Length	914	914	914
Width (overall) (mm)	250	250	250
Depth (overall) (mm)	250	250	250



SEE PAGE 116 FOR FULL PRODUCT DATA.



YORKSTONE FLAG PRODUCT DATA

Nominal size (mm)	300 x random length [†]	450 x random length [†]	600 x random length [†]	400 wide x 400 long	600 wide x 600 long
Nominal Thickness	50, 63 [†] , 75 [†]	50, 63 [†] or 75 [†]	50, 63 [†] or 75 [†]	50, 63 or 75	50, 63 or 75
Colours	All	All	All	All	All
Palletised	Yes	Yes	Yes	Yes	Yes
Finishes	DS - All, FL - Hunters Hill	DS - All, FL - Hunters Hill	DS - All, FL - Hunters Hill	DS - All, FL - Hunters Hill	DS - All, FL - Hunters Hill

Other sizes and thicknesses available to order.

YORKSTONE SETTS PRODUCT DATA

Nominal size (mm)	100 wide x 100 long	100 wide x 200 long	100 wide x random length
Nominal Thickness	50, 63 or 75	50, 63 or 75	50, 63 or 75
Colours	All	All	All
Palletised	Yes	Yes	Yes
Finishes	DS - All, TU - All, FL - Hunters Hill	DS - All, TU - All, FL - Hunters Hill	DS - All, TU - All, FL - Hunters Hill

DS - Diamond Sawn / FL - Flamed / TU - Tumbled.

[†] Normally available from stock.

Other sizes and thicknesses available to order.



WELSH SLATE FLAG PRODUCT DATA

Nominal size (mm)	300 x random length	450 x random length	600 x random length	400 wide x 400 long	600 wide x 600 long
Nominal Thickness	50, 63, 75	50, 63 or 75	50, 63 or 75	50, 63 or 75	50, 63 or 75
Colours	All	All	All	All	All
Palletised	Yes	Yes	Yes	Yes	Yes
Finishes	Natural riven split top and bottom, sawn sides				

Other sizes and thicknesses available to order.

WELSH SLATE SETTS PRODUCT DATA

Nominal size (mm)	100 wide x 100 long	100 wide x 200 long	100 wide x random length
Nominal Thickness	50, 63 or 75	50, 63 or 75	50, 63 or 75
Colours	All	All	All
Palletised	Yes	Yes	Yes
Finishes	Natural riven split top and bottom, sawn sides		

Other sizes and thicknesses available to order.



CAITHNESS FLAG PRODUCT DATA

Nominal size (mm)	150 x random length	300 x random length	450 x random length	600 x random length
Nominal Thickness	40, 50 or 65	40, 50 or 65	40, 50 or 65	40, 50 or 65
Palletised	Yes	Yes	Yes	Yes
Finishes	Natural split to top and bottom, sawn sides			

Other sizes and thicknesses available to order.



IRISH GRANITE FLAG PRODUCT DATA

Nominal size (mm)	450 x random length	600 x random length	400 wide x 400 long	400 wide x 650 long
Nominal Thickness	50 or 63	50 or 63	50 or 63	50 or 63
Colours	All	All	All	All
Palletised	Yes	Yes	Yes	Yes
Finishes	Fine picked or Flamed	Fine picked or Flamed	Fine picked or Flamed	Fine picked or Flamed

Other sizes (including setts) and thicknesses available to order.



PORTUGUESE GRANITE FLAG PRODUCT DATA

Nominal size (mm)	450 wide x random length	600 wide x random length	400 wide x 400 long	400 wide x 650 long
Nominal Thickness	50,63 or 75	50,63 or 75	50,63 or 75	50,63 or 75
Colours	All	All	All	All
Palletised	Yes	Yes	Yes	Yes
Finishes	Fine picked or Flamed	Fine picked or Flamed	Fine picked or Flamed	Fine picked or Flamed

Other sizes (including setts) and thicknesses available to order.



PORTUGUESE GRANITE SETTS PRODUCT DATA

Nominal size (mm)	100 wide x 100 long	100 wide x 200 long	100 wide x 250/300 random length
Nominal Thickness	50 or 100	50, 100 or 150	150 or 200
Colours	All*	All*	All
Palletised	Yes	Yes	Yes
Finishes	Cropped/split	Cropped/split	Cropped/split

Silver Grey and Dark Grey normally held in stock. Other sizes and thicknesses available to order.



PORPHYRY FLAG PRODUCT DATA

Nominal size (mm)	300 wide x random length	450 wide x random length	600 wide x random length
Nominal Thickness	60, 80, 100 or 150	60, 80, 100 or 150	60, 80, 100 or 150
Colours	All	All	All
Palletised	Yes	Yes	Yes
Finishes	Natural split to top and bottom, split sides		

Other sizes and thicknesses available to order. Sawn sides available in some sizes.

* Due to the nature of Porphyry, supplied thicknesses will vary over a range from the nominal - please see the data sheet for further information.



PORPHYRY SETTS PRODUCT DATA

Nominal size (mm)	50 wide x 50 long	80 wide x 80 long	100 wide x 100 long	150 wide x random length
Nominal Thickness	50 or 60	80 or 100	80 or 100	80, 100 or 150
Colours	All	All	All	All
Palletised	Yes	Yes	Yes	Yes
Finishes	Cropped/split	Cropped/split	Cropped/split	Cropped/split

Other sizes, thicknesses and finishes available to order.



SANDSTONE FLAG PRODUCT DATA

Nominal size (mm)	450 wide x random length	600 wide x random length
Nominal Thickness	50, 63 or 75	50, 63 or 75
Colours	All	All
Palletised/crated	Yes	Yes
Finishes	Sawn, lightly sandblasted	Sawn, lightly sandblasted

Other sizes and thicknesses available to order.

Paving: Flame textured and fine picked finishes available to order.



SANDSTONE SETTS PRODUCT DATA

Nominal size (mm)	100 wide x 100 long	100 wide x 200 long	100 wide x random length
Nominal Thickness	50, 63 or 75	50, 63 or 75	50, 63 or 75
Colours	All	All	All
Palletised/crated	Yes	Yes	Yes
Finishes	Diamond sawn, Tumbled	Diamond sawn, Tumbled	Diamond sawn, Tumbled

Other sizes and thicknesses available to order.

Setts: Flame textured and fine picked finishes available to order.



GRANITE FLAG PRODUCT DATA

Nominal size (mm)	450 x random length	600 x random length	400 wide x 400 long	600 wide x 600 long
Nominal Thickness	50, 63 or 75	50, 63 or 75	50, 63 or 75	50, 63 or 75
Colours	All	All	All	All
Palletised	Yes	Yes	Yes	Yes
Finishes	Fine picked or Flamed	Fine picked or Flamed	Fine picked or Flamed	Fine picked or Flamed

Other sizes and thicknesses available to order.

GRANITE SETTS PRODUCT DATA

Nominal size (mm)	100 wide x 100 long	100 wide x 200 long	100 wide x 250/300 random length	150 wide x 300 long
Nominal Thickness	50, 60, 75 or 100	50, 60, 75 or 100	50, 60, 75 or 100	50, 60, 75 or 100
Colours	All	All	All	All
Palletised	Yes	Yes	Yes	Yes
Finishes	Bush hammered, fine picked, flame textured			

Other sizes and thicknesses are also available.



GRANITE KERBS PRODUCT DATA

Nominal size (mm)	150 wide x 1000 long straight	125 wide x 1000 long straight	300 wide x 1000 long straight
Nominal height	300	250	200
Colours	All	All	All
Finishes	Fine picked	Fine picked	Fine picked
External Radii available	1.21m, 1.82m, 2.43m, 3.04m, 4.57m, 6.00m, 9.00m		1.21m, 1.82m, 2.43m, 3.04m, 4.57m, 6.00m
Droppers available	150 x 300 to 150 x 150 straight dropper in 1m length		
Quadrants available	300 x 300 x 200 90 degree	300 x 300 x 200 90 degree	300 x 300 x 200 90 degree
Palletised/Crated	Yes	Yes	Yes

Fine picked Silver Grey normally available from stock. Other colours sizes and thicknesses available to order.



ECOPAWE GROUND FLAG PRODUCT DATA

Size (mm)	600x600	450x450	400x400
Thickness (mm)	50	70	65
Weight (kg)	44	38.7	25
Units/m ² (approx)	2.78	4.94	6.25
No. per pack	20	30	32
M ² /pack (approx)	7.20	6.07	5.12
Pack weight (T)	0.88	1.16	0.80
Colour available	Black Fleck*	Black Fleck	Black Fleck
Chamfered	Yes	Yes	Yes



* MTO with minimum order of 200m². Available with a step insert in all stocked sizes on MTO basis with minimum order of 2 packs.

ECOPAWE TEXTURED FLAG PRODUCT DATA

Size (mm)	600x600	450x450	450x450	400x400	400x200	600x200	300x300	300x200	300x100	200x200	200x100	100x100	200x100
Thickness (mm)	50	70	50	65	65	80	80	80	80	80	80	80	60
Weight (kg)	44	38.7	23.5	25	12.5	21	16.5	11	5.5	7.3	3.8	1.7	2.8
Units/m ² (approx)	2.78	4.94	4.94	6.25	12.50	8.33	11.11	16.67	33.33	25	50	100	50
No. per pack	28	36	40	40	96	36	54	108	216	160	320	560	384
M ² /pack (approx)	10.08	7.29	8.10	6.40	7.68	4.32	4.86	6.48	6.48	6.40	6.40	5.60	7.68
Pack weight (T)	1.23	1.39	0.94	1.00	1.20	0.76	0.89	1.18	1.18	1.17	1.16	1.00	1.08
Colour available	GF, BF*	GF, BF*	GF*, BF*	GF, BF*	GF, BF*	GF*, BF*	GF*, BF*	GF*, BF*	GF*, BF*	GF*, BF*	GF*, BF*	GF, BF	GF*, BF*
Chamfered	Yes	Yes	Yes	Yes	Yes	Yes	Yes	Yes	Yes	Yes	Yes	Yes	Yes

GF - Grey Fleck / BF - Buff Fleck. * MTO products is a minimum of 1,000m² for each flag size and 500m² for one block paving size, 600m² for two block paving sizes, 700m² for three block paving sizes etc. Contact the sales office for step insert information.

STONEMASTER® WASHED FLAG PRODUCT DATA

Size (mm)	600x450	450x450	300x450	600x200	300x300	300x200	300x100	200x200	200x100	100x100
Thickness (mm)	80	80	80	80	80	80	80	80	80	80
Weight (kg)	51	38	25	21	16.5	11	5.5	7.3	3.8	1.7
Units/m ² (approx)	3.70	4.94	7.41	8.33	11.11	16.67	33.33	25	50	100
No. per pack	20	40	40	36	54	108	216	160	320	560
M ² per pack approx)	5.40	8.10	5.40	4.32	4.86	6.48	6.48	6.40	6.40	5.6
Pack weight (T)	1.04	1.55	1.04	0.76	0.89	1.18	1.18	1.17	1.16	1.00
Colour available	DB*, MB*, LB*, DG*, MG*, LG*	DB*, MB*, LB*, DG*, MG*, LG*	DB*, MB*, LB*, DG*, MG*, LG*	DB*, MB*, LB*, DG*, MG*, LG*	DB*, MB*, LB*, DG*, MG*, LG*	DB*, MB*, LB*, DG*, MG*, LG*	DB*, MB*, LB*, DG*, MG*, LG*	DB*, MB*, LB*, DG*, MG*, LG*	DB*, MB*, LB*, DG*, MG*, LG*	DB*, MB*, LB*, DG*, MG*, LG*
Chamfered	Yes	Yes	Yes	Yes	Yes	Yes	Yes	Yes	Yes	Yes

DB - Dark Buff / MB - Medium Buff / LB - Light Buff / DG - Dark Grey / MG - Medium Grey / LG - Light Grey. StoneMaster paving comes banded and shrink-wrapped to a pallet. Also available in block sizes (see concrete block paving page 43). Other sizes may be available. Please contact sales office.

* MTO with a minimum order of 500m².

200-500m² premium price offer



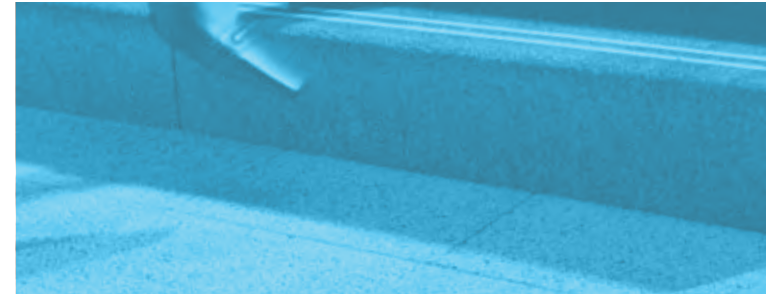
ANDOVER WASHED FLAG PRODUCT DATA

Size (mm)	600x200	300x300	300x200	300x100	200x200	200x100	100x100
Thickness (mm)	80	80	80	80	80	80	80
Weight (kg)	21	16.5	11	5.5	7.3	3.8	1.7
Units/m ² (approx)	8.33	11.11	16.67	33.33	25	50	100
No. per pack	36	54	108	216	160	320	560
M ² /pack	4.32	4.86	6.48	6.48	6.40	6.40	5.60
Pack weight (T)	0.76	0.89	1.18	1.18	1.17	1.16	1.00
Colour available	SG*, AC*	SG*, AC*	SG, AC*	SG*, AC*	SG, AC*	SG, AC*	SG, AC*
Chamfered	Yes	Yes	Yes	Yes	Yes	Yes	Yes

SG - Silver Grey / AC - Anthracite Charcoal.

Andover Washed block paving comes banded and shrink-wrapped to a pallet. Andover Washed complete step and tread unit available MTO in Silver Grey and Anthracite Charcoal.

* MTO products is a minimum of 500m² for one block paving size, 600m² for two block paving sizes, 700m² for three block paving sizes etc. Contact the sales office for step insert information.



ANDOVER TEXTURED FLAG PRODUCT DATA

Size (mm)	600x600	450x450	450x450	400x400	400x200	600x200	300x300	300x200	300x100	200x200	200x100	100x100	200x100
Thickness (mm)	50	70	50	65	65	80	80	80	80	80	80	80	60
Weight (kg)	44	38.7	23.5	25	12.5	21	16.5	11	5.5	7.3	3.8	1.7	2.8
Units/m ² (approx)	2.78	4.94	4.94	6.25	12.50	8.33	11.11	16.67	33.33	25	50	100	50
No. per pack	28	36	40	40	96	36	54	108	216	160	320	560	384
M ² /pack (approx)	10.08	7.29	8.10	6.40	7.68	4.32	4.86	6.48	6.48	6.40	6.40	5.60	7.68
Pack weight (T)	1.23	1.39	0.94	1.00	1.20	0.76	0.89	1.18	1.18	1.17	1.16	1.00	1.08
Colour available	SF, Wh*, LG, SG*, MG*, Cr*, Che*, Oa*	SF, Wh*, LG, SG*, MG*, Cr*, Che*, Oa*	SF, Wh, LG, SG, MG, Cr, Che, Oa	SF, Wh*, LG, SG*, MG, Cr, Che*, Oa*	SF, Wh*, LG, SG*, MG*, Cr*, Che*, Oa*	SF, Wh, LG, SG*, MG, Cr*, Che, Oa*	SF, Wh*, LG*, SG*, MG*, Cr*, Che*, Oa*	SF, Wh*, LG*, SG*, MG*, Cr*, Che*, Oa*	SF, Wh*, LG*, SG*, MG*, Cr*, Che*, Oa*	SF, Wh*, LG*, SG*, MG*, Cr*, Che*, Oa*	SF, Wh*, LG, SG, MG, Cr*, Che*, Oa*	SF, Wh*, LG*, SG*, MG*, Cr*, Che*, Oa*	SF, Wh*, LG, SG*, MG*, Cr*, Che*, Oa*
Chamfered	Yes	Yes	Yes	Yes	Yes	Yes	Yes	Yes	Yes	Yes	Yes	Yes	Yes

SF - Silver Fleck / Wh - White / LG - Light Grey / SG - Silver Grey / MG - Midnight Grey / Cr - Cream / Che - Chestnut / Oa - Oak.

* MTO products is a minimum of 1,000m² for each flag size and 500m² for one block paving size, 600m² for two block paving sizes, 700m² for three block paving sizes etc. Contact the sales office for step insert information.

ULTRAPAVE FLAG PRODUCT DATA

Size (mm)	750x600	600x600	750x600	600x600	600x450
Finish	Textured	Textured	Pimple	Pimple	Pimple
Reinforcement	Steel	Steel	Fibre	Fibre	Fibre
Thickness (mm)	63	63	63	63	63
Weight (kg)	65.6	51.9	65.9	53.5	40
Units/m ² (approx)	2.22	2.78	2.22	2.77	3.70
No. per pack	14	14	17	17	17
M ² /pack (approx)	6.30	5.05	7.66	6.14	4.60
Pack weight (T)	0.92	0.73	1.12	0.91	0.68
Colour available	SG*, DG*	SG*	Gy	Gy	Gy
Chamfered	No	No	No	No	No

SG - Silver Grey / DG - Dark Grey / Gy - Grey. All units MTO.

750x600 in Dark Grey available flat packed in pack of 13 in both reinforced and unreinforced formats on MTO basis with minimum order of 170 packs.

600x600 Silver Grey is also available as unreinforced on MTO basis. Standard Grey, pimple finish products are MTO only.

Note: Dark Grey and Standard Grey shades do not meet our Life benchmarks. For more information please visit www.aggregate.com/ultrapave.

MOORDALE TEXTURED FLAG PRODUCT DATA

Size (mm)	600x600	450x450	450x450	400x400	400x400
Finish	Textured	Textured	Textured	Textured	Textured
Thickness (mm)	50	70	50	65	50
Weight (kg)	41.7	33.1	23.9	23.6	18.9
Units/m ² (approx)	2.78	4.94	4.94	6.25	6.25
No. per pack	18	26	36	28	36
M ² /pack (approx)	6.47	5.26	7.29	4.48	5.76
Pack weight (T)	0.75	0.86	0.86	0.66	0.68
Colour available	Gy, Bf	Gy, Bf	Gy, Bf	Gy, Bf	Gy, Bf
Chamfered	No	No	No	No	No

Gy - Grey / Bf - Buff.

Available with a step insert in all stocked sizes on MTO basis with minimum order of 2 packs.



ACADEMY FLAG PRODUCT DATA

Size (mm)	400x400	450x450	450x450
Thickness (mm)	65	50	70
Weight (kg)	23.5	24	33
Units/m ² (approx)	6.25	4.94	4.94
No. per pack	2x11	2x13	2x10
M ² /pack	4.5	7.3	5.3
Pack weight (T)	0.66	0.86	0.86
Colour available	Grey	Grey	Grey
Chamfered	No	No	No



Academy paving comes banded and shrink-wrapped to a pallet.

NIGHTEC FLAG PRODUCT DATA

Size (mm)	100x100
Thickness (mm)	80
Weight (kg)	1.7
Units/m ² (approx)	100
No. per pack	528
M ² /pack (approx)	5.28
Pack weight (T)	0.90
Colour available	All
Chamfered	Yes (R5/2mm)
Surface	Textured



Available on a made to order basis.

APPALACHIAN FLAG PRODUCT DATA

Size (mm)	600x600	450x450	450x450	400x400	400x400
Thickness (mm)	50	70	70	65	65
Weight (kg)	44	38.7	38.7	25	25
Units/m ² (approx)	2.78	4.94	4.94	6.25	6.25
No. per pack	20	30	30	32	32
M ² /pack (approx)	7.20	6.08	6.08	5.12	5.12
Pack weight (T)	0.88	1.16	1.16	0.80	0.80
Colour available	Gy	Gy, BF, Ch*	Gy*	Gy, BF, Ch, L	Gy*, L*
Chamfered	No	Yes	No	Yes	No

Gy - Grey / BF - Black Fleck / Ch - Charcoal / L - Leemoor.

Available as a step insert in all stocked sizes on MTO basis with minimum order of 2 packs.

Textured Blister 400x400x65 paving available as a MTO in Grey shade with minimum order of 200m².

* MTO with minimum order of 250 packs for the 450x450 and 300 packs for the 400x400.

MOORDALE GROUND FLAG PRODUCT DATA

Size (mm)	600x600	450x450	450x450	400x400	400x400	400x400
Thickness (mm)	50	70	50	65	65	50
Weight (kg)	44	34.3	24	25	25	19
Units/m ² (approx)	2.78	4.94	4.94	6.25	6.25	6.25
No. per pack	20	28	40	32	32	40
M ² /pack (approx)	7.19	5.67	8.10	5.12	5.12	6.40
Pack weight (T)	0.88	0.96	0.96	0.80	0.80	0.76
Colour available	Gy, Bf	Bf*, Gy*	Gy, Bf	Gy, Bf	Gy*, Bf*	Gy*, Bf*
Chamfered	No	Yes	No	No	Yes	No

Gy - Grey / Bf - Buff.

* MTO with minimum order of 350 packs for the ground 450x450, 300 packs for the ground 400x400x65 and 400 packs for the ground 400x400x50.

Available with a step insert in all stocked sizes on MTO basis with minimum order of 2 packs.



VIANOVA FLAG PRODUCT DATA

Size (mm)	600x200	400x200	200x200	200x100
Thickness (mm)	80	80	80	80
Weight (kg)	21	14	7	3.6
Units/m ² (approx)	8.33	12.5	25	50
No. per pack	80	120	240	480
M ² /pack	9.6	9.6	9.6	9.6
Pack weight (T)	1.73	1.73	1.73	1.73
Colour available	LG, DG, AC	LG, DG, AC	LG, DG, AC	LG, DG, AC
Chamfered	No	No	No	No

LG - Light Grey / DG - Dark Grey / AC - Anthracite Charcoal.

Vianova paving comes banded and shrink-wrapped to a pallet.

Other sizes available on a MTO basis with 5-7 week lead time from order placed with a minimum order of 500m²

Washed and Textured finishes also available on a MTO basis.

COUNTRYSSETS FLAG PRODUCT DATA

Size (mm)	220x100	97x100
Thickness (mm)	102	102
Weight (kg)	5.1	2.3
Units/m ² (approx)	40.6	88.2
No. per pack	192	384
M ² /pack (approx)	4.73	4.35
Pack weight (T)	1.00	0.89
Colour available	SG, DG*	SG, DG*
Chamfered	No	No



SG - Silver Grey / DG - Dark Grey.

* MTO with minimum order of 200 packs.

WOBURN RUMBLED FLAG PRODUCT DATA

Size (mm)	201x134	134x134	100x134	201x134	134x134	100x134
Thickness (mm)	80	80	80	60	60	60
Weight (kg)	5	3.3	2.4	3.7	2.4	1.8
Units/m ² (approx)	37.2	55.7	74.7	37.0	56.0	74.7
No. per pack	240	360	480	312	468	624
M ² /pack (approx)	6.46	6.46	6.43	8.43	8.35	8.32
Pack weight (T)	1.19	1.17	1.17	1.14	1.14	1.14
Colour available	Ru, Gr, Au	Ru, Gr, Au	Ru, Gr, Au	Ru, Gr, Au	Ru, Gr, Au	Ru, Gr, Au
Chamfered	No	No	No	No	No	No

Ru - Rustic / Gr - Graphite / Au - Autumn.

Kerbs available in all 3 shades - 100x125x200 size as stocked product.

WOBURN ORIGINAL FLAG PRODUCT DATA

Size (mm)	201x134	134x134	100x134	201x134	134x134	100x134
Thickness (mm)	80	80	80	60	60	60
Weight (kg)	5	3.3	2.4	3.7	2.4	1.8
Units/m ² (approx)	37.2	55.7	74.7	37.2	55.7	74.7
No. per pack	240	360	480	312	468	624
M ² /pack (approx)	6.46	6.46	6.43	8.43	8.35	8.32
Pack weight (T)	1.19	1.17	1.17	1.14	1.14	1.14
Colour available	Ru, Gr,	Ru, Gr,	Ru, Gr,	Ru, Gr,	Ru, Gr,	Ru, Gr,
Chamfered	No	No	No	No	No	No



Ru - Rustic / Gr - Graphite.

EUROPA PRODUCT DATA

Size (mm)	200x100	200x100	200x100
Thickness (mm)	80	60	65
Weight (kg)	3.7	2.8	3.0
Units/m ² (approx)	50.0	50.0	50.0
No. per pack	308	404	372
M ² /pack	6.16	8.08	7.44
Pack weight (T)	1.13	1.12	1.11
Colour available	Gy, Rd, Ch, Bf, BO, Br, Au*	Gy, Rd, Ch, Bf, BO, Br, Au	Gy
Chamfered	Yes	Yes	Yes
No. blocks per layer	-	-	-
M ² per layer (approx)	-	-	-

Gy - Grey / Rd - Red / Ch - Charcoal / Bf - Buff / BO - Burnt Oker / Br - Brindle / Au - Autumn.

* MTO with minimum order of 240 packs.

A pencil edge option is available in 60mm in Gy, Ch and Br on a MTO basis with a minimum order of 110 packs. Painted blocks are available in both 80mm and 60mm in yellow, black and white. Kerbs available in Rd, Ch and Br shades in 3 sizes as stocked product. Available on a made to order basis.

ML - mechanical lay. All Europa packs are banded and have tine holes.

EUROPA ML PRODUCT DATA

Size (mm)	200x100 ML
Thickness	80
Weight (kg)	3.6
Units/m ² (approx)	50.0
No. per pack	369
M ² /pack	7.38
Pack weight	1.33
Colours available	All*
Chamfered	Yes
No. blocks per layer	41
M ² per layer (approx)	0.82



INFILTA PRODUCT DATA								
Product	Infilta	EcoPave Infilta*	StoneMaster Infilta*	Andover Textured Infilta*	Andover Washed Infilta*	Woburn Original Infilta*	Woburn Rumbled Infilta	Woburn Rumbled Infilta
Sizes (mm)	200x100	200x100+	200x100+	200x100+	200x100+	201x134 134x134 100x134	201x134 134x134 100x134	201x134 134x134 100x134
Thickness (mm)	60/80	80	80	80	80	60	60	80
Weight (kg)	2.5/3.3	3.3	3.3	3.3	3.3	3.5, 2.3, 1.7	3.5, 2.3, 1.7	4.8, 3.2, 2.4
Units/m ² (approx.)	50	50	50	50	50	37, 55, 74	37, 55, 74	37, 55, 74
No. per pack	404/308	320	320	320	320	312, 468, 624	312, 468, 624	240, 360, 480
M ² /pack (approx.)	8.08/6.16	6.46	6.46	6.46	6.46	8.43, 8.35, 8.32	8.43, 8.35, 8.32	6.46, 6.46, 6.43
Pack weight (T)	1.12/1.13	1.17	1.17	1.17	1.17	1.14, 1.14, 1.14	1.14, 1.14, 1.14	1.14, 1.14, 1.14
Colour available	Br, Ch, Gr, Rd, Au	BF, GF, BuF	LBW, MBW, DBW	Wh, LG, SG, MG, Cr, Chs, Oa, SF	SG, AC, Bu	Gra, Ru	Au, Gra, Ru	Au, Gra, Ru

BF - Black Fleck / SF - Silver Fleck / BuF - Buff Fleck / GF - Grey Fleck / LBW - Light Buff Washed / MBW - Medium Buff Washed / DBW - Dark Buff Washed / LGW - Light Grey Washed / MGW - Medium Grey Washed / DGW - Dark Grey Washed / Wh - White / LG - Light Grey / MG - Midnight Grey / Chs - Chestnut / Oa - Oak / Cr - Cream / Ch - Charcoal / SG - Silver Grey / AC - Anthracite Charcoal / Bu - Buff / Gr - Grey / Br - Brindle / Au - Autumn / Gra - Graphite / Ru - Rustic.

* MTO with minimum order of 1500m² for standard Infilta, but all specifier Infilta products are only 500m². + Also available in 200x134, 134x134 and 100x134 as MTO item.

COURTSTONE FLAG PRODUCT DATA					
Size (mm)	900x600	750x600	600x600	600x450	450x450
Finish	Riven	Riven	Riven	Riven	Riven
Thickness (mm)	63	63	63	63	63
Weight (kg)	83.3	71.3	58.7	45.3	30.0
Units/m ² (approx)	1.85	2.22	2.78	3.70	4.94
No. per pack	15	15	15	15	30
M ² /pack (approx)	8.11	6.76	5.40	4.05	6.07
Pack weight (T)	1.25	1.07	0.88	0.68	0.90
Colour available	Ch	Ch	Ch	Ch	Ch
Chamfered	No	No	No	No	No

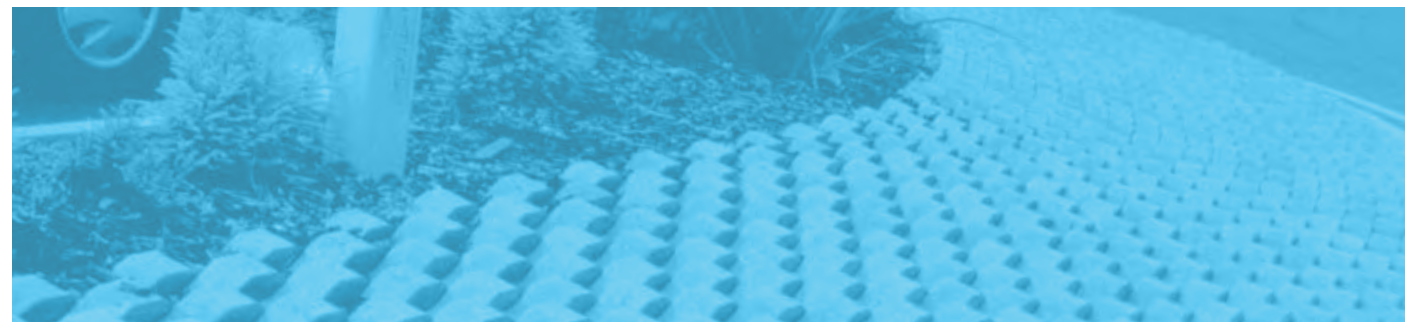
Ch - Charcoal.



GRASSGRID PRODUCT DATA	
Dimensions (mm)	366x274
Thickness (mm)	100
Weight (kg)	19.8
Units/m ² (approx)	10
No. per pack	48
M ² /pack (approx)	4.80
Pack weight (T)	0.76
Colour available	Grey
Chamfered	N/A

ELITE FLAG PRODUCT DATA		
Size (mm)	298x80	600x600
Format	2	3
Thickness (mm)	90-132	74
Weight (kg)	5.8	48.8
Units/m ² (approx)	42.0	2.77
No. per pack	140	24
M ² /pack (approx)	3.33	8.67
Pack weight (T)	0.81	1.10
Colour available	Gy	W
Chamfered	No	No

Gy - Grey / W - White.



BRITISH STANDARD PAVING **PRODUCT DATA**

Size (mm)	600x450	600x450	600x600	600x600	600x600	750x600	750x600	900x600	900x600	900x300	600x300
Finish	Standard	Standard	Standard	Standard	Standard	Standard	Standard	Standard	Standard	Standard	Standard
Thickness (mm)	50	63	37	50	63	50	63	50	63	50	50
Weight (kg)	31.0	40.0	31.0	42.0	52.0	52.0	66.0	63.0	77.0	31.0	21.0
Units/m ² (approx)	3.70	3.70	2.77	2.77	2.77	2.22	2.22	1.85	1.85	3.80	5.60
No. per pack	22	17	25	22	17	22	17	22	17	20	22
M ² /pack (approx)	5.95	4.59	9.03	7.94	6.14	9.91	7.66	11.89	9.19	5.26	3.93
Pack weight (T)	0.68	0.68	0.78	0.92	0.88	1.14	1.12	1.39	1.31	0.62	0.46
Colour available	Gy, Bf	Gy	Gy	Gy, Bf, Rd	Gy, Bf, Rd	Gy, Bf, Rd	Gy	Gy, Bf, Rd	Gy	Gy	Gy
Chamfered	No*	No	No	No*	No	No*	No	No*	No	No	No

Size (mm)	400x200	300x300	400x400	400x400	450x450	450x450	450x450	600x600	900x600
Finish	Standard	Standard	Standard	Standard	Standard	Standard	Standard	Barface	Barface
Thickness (mm)	65	60	50	65	50	50	70	50	50
Weight (kg)	12.0	13.0	19.0	24.0	24.0	24.0	34.0	41.8	62.7
Units/m ² (approx)	12.50	11.11	6.25	6.25	4.94	4.94	4.94	2.77	1.85
No. per pack	32	34	40	32	40	40	30	22	22
M ² /pack (approx)	2.56	3.06	6.40	5.12	8.10	8.10	6.07	7.94	11.89
Pack weight (T)	0.38	0.44	0.76	0.77	0.96	0.96	1.02	0.92	1.38
Colour available	Gy	Gy	Gy	Gy, Bf	Gy, Bf	Gy	Gy	Gy, Bf	Gy
Chamfered	Yes	No	Yes	Yes	Yes	No	Yes	No	No

Gy - Grey / Bf - Buff / Rd - Red.

The 37mm thick and 900x300x50mm and 600x300x50mm are not British Standard sizes.

Please check availability from different works.

Other shades may be available on a MTO basis. Please check with sales office.

BRITISH STANDARD TACTILE **PRODUCT DATA**

Size (mm)	450x450	450x450	400x400	400x400	400x400	400x400	400x400	400x400
Finish	Blister	Blister	Blister	Blister	Hazard Warning Corduroy	Platform Edge Lozenge	Guidance	Cycleway
Thickness (mm)	50	70	50	65	50	50	50	50
Weight (kg)	24.7	37.1	18.8	24.7	18.8	18.8	18.8	18.8
Units/m ² (approx)	4.94	4.94	6.25	6.25	6.25	6.25	6.25	6.25
No. per Pack	34	28	34	30	34	34	34	34
M ² /pack (approx)	6.88	5.67	5.44	4.80	5.44	5.44	5.44	5.44
Pack Weight (T)	0.84	1.04	0.64	0.74	0.64	0.64	0.64	0.64
Colour Available	Bf, Rd	Bf, Rd	Gy, Bf, Rd, Ch	Gy, Bf, Rd, Ch	Gy, Bf, Ch	Bf	Bf, Ch	Gy, Bf
Chamfered	No	No	No	No	No	No	No	No

Gy - Grey / Bf - Buff / Rd - Red / Ch - Charcoal.

Please check availability from different works.

Other shades may be available on a MTO basis. Please check with sales office.

* Available on a MTO basis.



ECKERB® PRODUCT DATA												
Type	Classic	Classic wide top	Classic crossing	Classic radius	Classic dropper	Classic quadrant	Classic flat top edging	Classic wide top crossing	Classic wide top radius	Classic wide top dropper	Classic step insert	Classic wide top step insert
Length (mm)	914	914	914	780	914	n/a	914	914	780	914	914	914
Height (mm)	255	205	150	255	255-150	150	150	205	205-100	205	255	205
Width (mm)	145	290	145	145	145	R305	50	290	290	290	145	290
Inst. edge profile	straight	straight	n/a	n/a	n/a	n/a	n/a	n/a	n/a	n/a	n/a	n/a
Profile	SQ	SQ	SQ	SQ	SQ	SQ	SQ	SQ	SQ	SQ	SQ	SQ
Finish	Textured	Textured	Textured	Textured	Textured	Textured	Textured	Textured	Textured	Textured	Textured	Textured
Weight (approx kg)	80	125	50	71	80	40	15	60	100	60	80	130
Colour available	BF	BF^	BF	BF	BF	BF	BF	BF^	BF^	BF^	BF^	BF^

BF - Black Fleck / SQ - Square / WT - Wide Top.

Classic radius units available in 1.8, 3, 6 and 9 metre external radius versions.

Classic Wide Top radius units available in 3, 6 and 9 metre external radius versions.

^ Made to order.

COUNTRYSIDE CLASSIC® PRODUCT DATA											
Type	Classic	Classic	Classic wide top	Classic crossing	Classic crossing	Classic radius	Classic radius	Classic dropper	Classic dropper	Classic quadrant	Classic quadrant
Length (mm)	914	914	914	914	914	780	780	914	914	n/a	n/a
Height (mm)	255	255	205	150	150	255	255	255-150	255-150	255	255
Width (mm)	125	145	290	125	145	125	145	125	145	R305	R305
Inst. edge profile	straight	straight	straight	n/a	n/a	n/a	n/a	n/a	n/a	n/a	n/a
Profile	HB	SQ	SQ	BN	SQ	HB	SQ	HB	SQ	HB	SQ
Finish	Textured	Textured	Textured	Textured	Textured	Textured	Textured	Textured	Textured	Textured	Textured
Weight (approx kg)	67	78	125	40	50	54	71	60	80	40	40
Colour available	SG	SG	SG	SG	SG	SG	SG	SG	SG	SG	SG

Type	Classic internal angle	Classic external angle	Classic flat top edging	Classic wide top crossing	Classic wide top radius	Classic wide top dropper	Square edge internal angle	Square edge external angle	Wide top internal angle	Wide top external angle
Length (mm)	n/a	n/a	914	914	780	914	n/a	n/a	n/a	n/a
Height (mm)	255	255	150	100	205	205-100	255	255	205	205
Width (mm)	125	125	50	290	290	290	145	145	290	290
Inst. edge profile	n/a	n/a	n/a	n/a	n/a	n/a	n/a	n/a	n/a	n/a
Profile	HB	HB	SQ	SQ	SQ	WT	SQ	SQ	SQ	SQ
Finish	Textured	Textured	Textured	Textured	Textured	Textured	Textured	Textured	Textured	Textured
Weight (approx kg)	30	30	15	60	100	60	34	34	40	40
Colour available	SG	SG	SG	SG	SG	SG	SG	SG	SG	SG

SG - Silver Grey / HB - Half Batter / SQ - Square / BN - Bullnose / WT - Wide Top.

Classic HB radius units available in 2, 3, 6 and 9 metre external radius versions. SQ units are in 1.8, 3, 6, and 9 metre sizes.

Classic Wide Top radius units available in 3, 6 and 9 metre external radius versions.

For further special requirements please contact our technical department on 01335 372216.

K-LITE® TRADITIONAL PRODUCT DATA

Type	Kerb	Kerb
Length (mm)	440	290
Height (mm)	140	215
Width (mm)	100	100
Installed edge profile	Low straight	Short straight
Weight (approx. kg)	16	16
Colour available	DG, SG	DG, SG



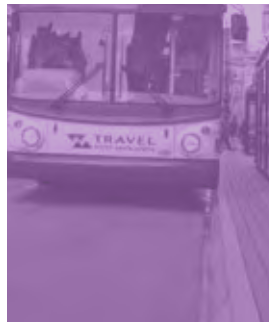
CAIRNHILL® PRODUCT DATA

Dimensions (mm)	Kerb	Kerb
Length (mm)	914	914
Height (mm)	255	150
Overall width (mm)	125	125
Edge profile	Square	Square
Finish	Riven	Riven
Weight (approx. kg)	70	40
Colour available	Charcoal	Charcoal

BLOCK KERB PRODUCT DATA

Type	Large	Medium	Small	Woburn
Length (mm)	100	100	100	100
Height (mm)	200	150	125	200
Width (mm)	125	150	125	125
Weight (kg)	5.2	4.4	3	5.2
Units/m (approx)	10	10	10	10
No. per pack	192	240	288	192
M/pack (approx)	19.2	24.0	28.8	19.2
Pack weight (T)	0.99	1.06	0.864	0.99
Colour available	Rd, Ch, Br	Ch	Rd, Ch, Br	Ru, Au, Gr

Rd - Red / Ch - Charcoal / Br - Brindle / Ru - Rustic / Au - Autumn / Gr - Graphite.
Full range of accessories available.



ACCESS KERB PRODUCT DATA

Type	220*^	180~	160*	180 GB**
Profile	Standard	Standard	Standard	Guided buses
Length (mm)	1000	1000	1000	1000
Height (mm)	350	310	290	310
Width (mm)	323/271	310	276/224	260
Dropper unit height	220-160	180-125	160-125	180-125
Weight (approx. kg) with marker bump	170	150	130	-
Weight (approx. kg) without marker bump	160	-	120	150
Colour available	Gy	Gy, SG***	Gy	Gy

Gy - Grey / SG - Silver Grey.

^ Quadrants also available for these sizes.

~ Only available with marker bump.

* Available with or without marker bump.

** Guided bus, only available without marker bump.

*** Available on a MTO basis only.

HGV KERB PRODUCT DATA

Type	Main unit	Half unit	Radius unit*	Dropper unit (types A&B)^
Length (mm)	1000	500	Various	1000
Height (mm)	415	415	415	415-318
Width (top/base) (mm)	215/310	215/310	215/310	170/215
Weight (approx. kg)	220	110	Varies	Varies
Colour available	Grey	Grey	Grey	Grey

* Radius units: available in 36/12, 11/7, 6/4.5, 3, 2 and 1.5 metre external radius versions, plus 36/12, 11/7, 6/4.5 and 3 metre internal radius versions. All radius units are made to order.

^ Transition units: left hand and right hand versions, types A and B are both required to create transition from HGV kerb to British Standard kerb 125x255mm HB2.

Quadrant sizes available: 415x310x90, 415x310x60, 415x310x45.

Internal angle 90° angle.

Dowel bars available to order.



BRITISH STANDARD KERB PRODUCT DATA

Type	HB1	HB2	HB2	HB3	BN1	BN2	BN2	BN3	BN3	SP2	SP2	SP3
Length (mm)	914	914	609	914	914	914	609	914	609	914	609	914
Height (mm)	305	255	255	150	305	255	255	150	150	255	255	150
Width (mm)	150	125	125	125	150	125	125	125	125	125	125	125
Weight (kg)	100	70	40	40	100	70	40	40	30	60	40	30
Units/m (approx)	1.09	1.09	1.64	1.09	1.09	1.09	1.64	1.09	1.64	1.09	1.64	1.09
No. per pack	14	18/16	18/16	Various	14	18/16	18/16	Various	24	18	18	24
M/pack (approx)	12.84	16.51/14.68	10.98/9.76	Various	12.84	16.51/14.68	10.98/9.76	Various	14.63	16.51	10.98	21.9
Pack weight (T)	1.4	1.26/1.12	0.72/0.64	Various	1.4	1.26/1.12	0.72/0.64	Various	0.72	1.26	0.72	0.72
Colour available	Grey	Grey	Grey	Grey	Grey	Grey	Grey	Grey	Grey	Grey	Grey	Grey

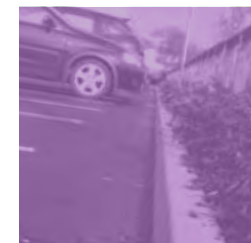
BRITISH STANDARD EDGING PRODUCT DATA

Type	Flat top	Flat top	Flat top	Bullnose	Bullnose	Bullnose	Round top	Round top	Round top
Length (mm)	914	914	914	914	914	914	914	914	914
Height (mm)	150	200	255	150	200	255	150	205	225
Width (mm)	50	50	50	50	50	50	50	50	75
Weight (kg)	15	20	30	15	20	30	15	20	40
Units/m (approx)	1.09	1.09	1.09	1.09	1.09	1.09	1.09	1.09	1.09
No. per pack	40	20/40	20/40	40	20/40	20/40	60	20	12
M/pack (approx)	36.56	18.28/35.56	18.28/36.56	36.56	18.28/35.56	18.28/36.56	55.05	18.28	11.01
Pack weight (T)	0.62	0.45/0.90	0.55/1.10	0.62	0.45/0.90	0.55/1.10	0.90	0.45	0.45
Colour available	Grey	Grey	Grey	Grey	Grey	Grey	Grey	Grey	Grey



DURAKERB PRODUCT DATA

Type	Straight (HB2)	Straight (BN3)	Straight (SP1)	Dropkerb LH	Dropkerb RH	External radius#	Internal radius#	External 90 angle	External 90 angle	Internal 90 angle	Internal 90 angle
Length (mm)	914	914	914	914	914	780	780	305	305	305	305
Width (mm)	125	125	125*	125	125	125	125	125	125	125	125
Depth (mm)	255	150	255	255/150	255/150	255	255	255	150	255	150
Weight kg**	5.6	3.5	5.2	4.6	4.6	4.7	4.7	4.6	2.5	4.6	2.5
Units/pack	48	90	42	56	56	48	48	40	40	40	40



* x 45 degree splayed angle

** Weights kg approximate

Available in 3m, 4m, 5m, 6m, 8m and 10m internal and external radius options.

† Represents non-primary material within the complete mix design.

HIGHWAY PRODUCT DATA

Type	Base unit	Top unit
Length (mm)	400	400
Width (overall) (mm)	460	460
Depth (overall) (mm)	369	245
Weight (approx. kg)	84	67
Colour available	Grey	Grey

Available from stock and supplied in pallet packs
 Channel dimensions 300x300mm (approx.)
 Inlet dimensions 65x150mm ellipse (approx.)



MINI HIGHWAY PRODUCT DATA

Type	Base unit	Top unit
Length (mm)	500	500
Width (overall) (mm)	250	250
Depth (overall) (mm)	235, 285, 335	285
Weight (approx. kg)	41, 45, 58	48
Colour available	Grey	Grey

Radii available - external and internal radius 4.5/6m, 7/11m and 12/36m on a made to order basis.

HYDROKERB® PRODUCT DATA

Type	Top unit	Slit box top	Inflow unit	Inspection unit	Radius unit*	Sump unit	Crossing base plate	Polymer base unit
Finish/profile	Half batter	Ductile iron		Ductile iron	Half batter		Galvanised steel	Polymer concrete
Length (mm)	914	485	530	450	900	500	1000	1000
Width (overall) (mm)	125	305	350	125	125	320	120	130
Depth (overall) (mm)	255	243	350	255	255	710	6	250
Weight (approx. kg)	66	60	49	30	66	85	8	22
Colour available	Silver Grey	n/a	n/a	n/a	Silver Grey	n/a	n/a	n/a

Radii available - external and internal radius 4.5/6m, 7/11m and 12/36m on a made to order basis.



CLEARWAY PRODUCT DATA

Type	Slot unit	Super heavy duty grid
Class (up to)	F (900kN)	F (900kN)
Length (mm)	400	400
Width (overall) (mm)	324	324
Depth (overall) (mm)	257	257
Nominal bore	150	150
Weight (approx. kg)	53	48
Colour available	Grey	Grey

Inlet options - Slot drain aperture width 15mm, Grid aperture width 15mm, Ductile iron grid width 143mm.

Accessories - Slit top boxes with chequered grating (Class D), Super heavy duty silt box type H (Class F) - weight 96kg solid, 84kg grated lid.

Supply of complete silt boxes only (either with a solid lid or grating) - separate supply of boxes, lids and gratings is prohibited in line with EN1433.



SAFETICURB PRODUCT DATA

Type	Standard (DBA)	Heavy duty (DBM)	Standard (DBG-DI)
Type	Slot	Slot	Grid - ductile iron
Class (up to)	C (250kN)	F (900kN)	C (250kN)
Length (mm)	914	914	914
Width (overall) (mm)	250	250	250
Depth (overall) (mm)	250	250	250
Nominal Bore	125	125	125
Weight (approx. kg)	102	106	107
Slot drain aperture width	15	15	-
Grid width	-	-	124
Colour available	Grey	Grey	Grey

Accessories - Slit top box type A (Class C), Super heavy duty silt box type H (Class F - Class D with Grating).

Supply of complete silt boxes only (either with a solid lid or grating) - separate supply of boxes, lids and gratings is prohibited in line with EN1433.

FURTHER INFORMATION

YOU CAN OBTAIN TECHNICAL DATA SHEETS USING THE QUICK LINKS FROM THE TOP OF EACH PRODUCT PAGE IN THIS BROCHURE. FURTHER INFORMATION ABOUT OUR PRODUCTS AND SERVICES (INCLUDING CASE STUDIES) IS AVAILABLE AT WWW.AGGREGATE.COM



Efflorescence

Aggregate Industries cannot accept responsibility for the effect of "efflorescence" which can be a characteristic of all building products with a high cement content.

The phenomenon may be exhibited by an apparent loss of intensity of colour and the appearance of a milky white bloom on the face of the product. The effect generally disappears with time and is no way detrimental to the performance of the product.

Colours

We take great care in the photographic accuracy of products shown, however due to variables in both the photographic and printing processes, colours may not exactly match current production. We recommend that clients obtain current production samples in suitable quantities as a general indication of colour before final selection.

To minimise colour and texture variation, we recommend that products are ordered from one batch. In manufacturing precast concrete products, variation in colour and texture may arise, and therefore total consistency cannot be guaranteed. The degree of rumbering on block paving products may also vary from product to product and between batches. Multi-coloured products are produced randomly therefore colour proportions in different blocks may vary.

Colours may vary slightly between production batches and customers are advised to mix and select product from at least three different packs on site. Natural stone products will feature more colour variation than concrete products.

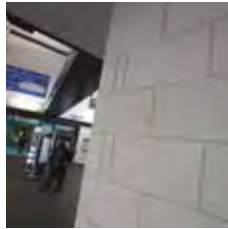
Product development

Aggregate Industries has a policy of continuous product development and product information is subject to change without notice. All products are manufactured to the appropriate British, (BS) standard or harmonised European standards, (BS EN) wherever possible. If no standard currently exists then Aggregate Industries' own standard is applied. All the products or services shown in this brochure are supplied subject to Aggregate Industries UK Limited terms and conditions of sale.

Use of information within literature

The designs shown in this literature are illustrative only, and all dimensions are nominal. Every effort is made to ensure the accuracy of all textual and pictorial content in this guide. No charge is levied for this brochure or the advice therein, and accordingly the company, its employees and authorised agents can accept no liability whatsoever, either indirectly or directly arising from the use of its products in connection with any information or advice contained in this guide. It is the responsibility of Clients and Installers to check that installations achieve the appropriate standard. The relevant British or European standard should be referenced at all times. You can obtain technical data sheets using the link from the top of each product page in this brochure and further information about the Charcon range, our products and services (including case studies) is available at www.aggregate.com





THE COMPLETE SERVICE

AGGREGATE INDUSTRIES OFFERS AN EXTENSIVE RANGE OF PRODUCTS AND SERVICES TO THE CONSTRUCTION INDUSTRY.

Building products

We have an extensive range of masonry, walling and roofing as well as concrete building blocks. From internal, structural concrete products to the finest facing walling blocks, our businesses are structured to meet the diverse construction, specification and aesthetic requirements that exist across the whole of the UK.

Tel: 01285 646884
Email: building.products@aggregate.com

Aggregates

We supply crushed rock, sand and gravel, stone and fill materials for construction. These can be delivered by road, rail or marine transport. We also produce silica and specialist sands.

Tel: 01455 285200
Email: aggregates@aggregate.com

Concrete

We offer a complete range of ready-mixed concretes and screeds, operating from over 70 sites. We also have an operation that caters for smaller collect loads.

Tel: 01283 714187
Email: concrete@aggregate.com

Asphalt and surfacing materials

We are a leading supplier of a full range of coated materials with over 50 locations in the UK, serving major conurbations, including sites for collect business.

Tel: 01455 288222
Email: asphalt@aggregate.com

Contracting services

We strengthen our construction materials portfolio through our involvement in infrastructure, surfacing and civil contracting works.

Tel: 01530 510066
Email: contracting@aggregate.com

Aggregate Industries, Hulland Ward,
Ashbourne, Derbyshire DE6 3ET

Tel: +44 (0)1335 372 222

Fax: +44 (0)1335 370 074

Email: landscaping@aggregate.com

www.aggregate.com

