



GENESISTM

KIOSK RANGE



www.glasdonbuildings.com

GENESIS™

KIOSK RANGE

Genesis kiosks are a range of high quality buildings which are available off the shelf for quick delivery. These stylish kiosks come as standard in four layouts and are ideally suited to a variety of locations and applications such as ticket sales kiosk, vending booth or security building.

A basic range of optional extras are available, including the use of vinyl graphic to personalise your kiosk for a more unique building.

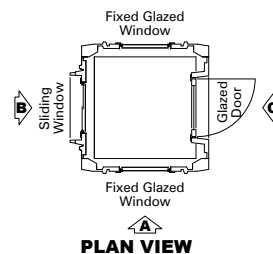
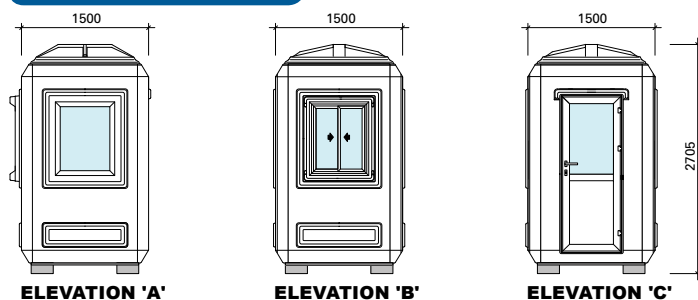
Standard Buildings

- A range of four small buildings built to a fixed specification.
- High quality materials at a budget-conscious cost.
- Normally available from stock to satisfy urgent requirements.
- Free delivery to mainland UK.

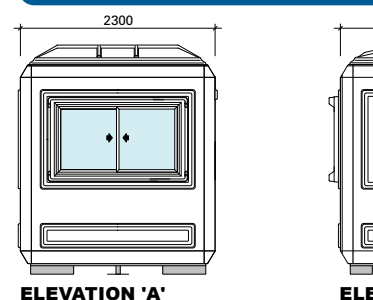


2.3 x 1.5m Model

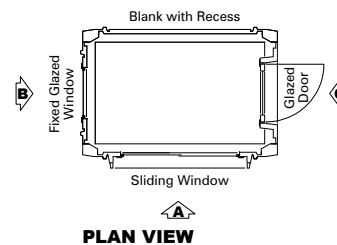
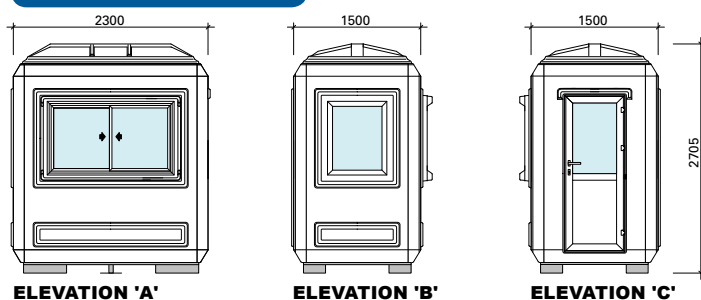
1.5 x 1.5m Model



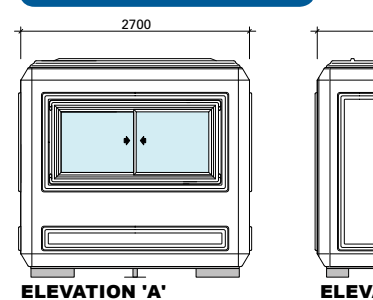
2.3 x 1.5m Model Double



2.3 x 1.5m Model

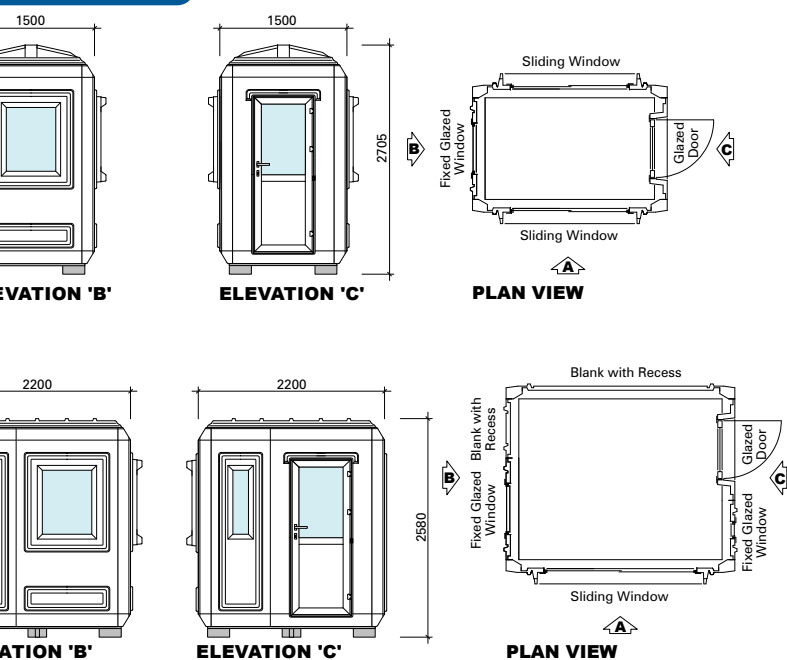


2.7 x 2.2m Model





Sliding Windows



Technical Information

Panel Composition: External and internal pigmented gelcoat backed with flame-retardant GRP laminate either side of a core of plywood and flame-retardant insulation foam relevant to each panel.

Fixing Grounds: Fixing can be carried out on any area of the panels.

Roofs: Insulated as standard and manufactured in one piece.

Floors: Textured Tulsa mesh grip surface on 22mm plywood board.

Glazing: Thermally toughened soda-lime silicate safety glass.

Doors: Aluminium door with Europrofile cylinder mortice lock.

Colour: Standard White RAL 9016

Base Requirements:

1.5 x 1.5m kiosk - 1400 x 1400 x 125mm

2.3 x 1.5m kiosk - 2200 x 1400 x 125mm

2.7 x 2.2m kiosk - 2600 x 2200 x 125mm

Base Fixing: Base fixing by the customer is achieved using the anchor bolts. Refer to the instructions supplied with the fixings for correct installation in accordance with the manufacturer recommendations.

Optional Extras

Electrics: A standard electrical kit consisting of fluorescent light fitting with diffuser, light switch and double 13 amp switched plug point, all wired to consumer unit ready to receive mains supply.

Additional Double Socket: An additional double 13 amp switched plug point.

Data Socket: An unwired data socket ready for local connection to telecoms networks.

External Power Intake Socket: A standard 32 amp external power intake socket installed through-panel, more suitable for portable applications where cables cannot be fed through the floor.

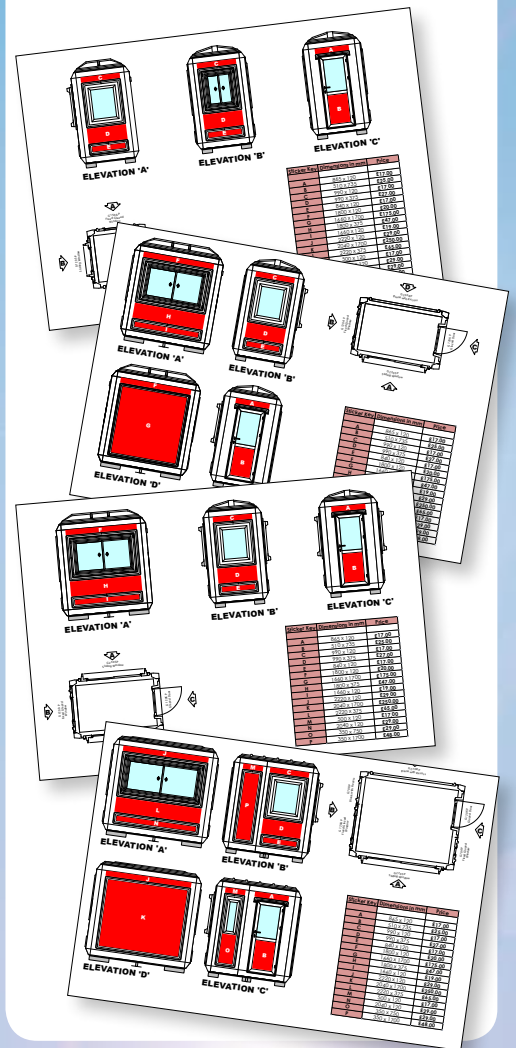
Heater: A 2kw electric fan convector heater for wall mounting, wired integrally to a fused switch.

Worktops: 30mm grey laminate-faced chipboard, 300mm wide, with varied lengths as per kiosk requirements.

Please note, when stock is available, lead times are between 7 and 14 days from receipt of order or artwork approval (if personalisation is required). However, if stock is not available a lead time of up to 8 weeks can be expected. Our Sales Office will inform you of expected delivery times when your order is placed.

Personalisation Options

Genesis kiosk can be personalised in a variety of areas using your own logos, photographs or artwork. Please contact our Sales Office for more information.



VISIT OUR WEBSITES

www.glasdonbuildings.com

Visit our website to see the full range of buildings and housings.

www.glasdon.com

Visit our website to see the full Glasdon product range which includes Litter Bins, Recycling Bins, Shelters, Buildings & Housings, Cigarette Bins, Winter Safety Equipment and more!



Glasdon®

Glasdon U.K. Limited
Buildings & Housings Division
Preston New Road
BLACKPOOL
Lancashire
FY4 4UL

Tel: (01253) 600418
Fax: (01253) 792558
e-mail: bh@glasdon-uk.co.uk
web: www.glasdon.com



ISO 9001
BUREAU VERITAS
Certification



Let's get social...



When you have finished with this leaflet please recycle it

GT016/19

Glasdon and Genesis are trademarks or registered trademarks of GLASDON Group or its subsidiaries in the UK and other countries.

Glasdon Group Limited Is An Equal Opportunities Employer.

© Glasdon UK Ltd. 05/2015. Glasdon reserve the right to alter price and specification without prior notice. LH/NB