



# Contents



3

Rigid & Self-Righting  
Bollards



9

Sign Carrying Bollards



12

Recycled Material  
Bollards



14

Chevreflex Chevron Boards



16

Verge & Hazard Marker  
Posts



21

Road Drainage



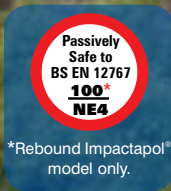
22

Village Gateways

# Rigid & Self-Righting Bollards







## Advanced Neopolitan™ 150 Bollard

Available as a self righting rebound material bollard or rigid Durapol® material model, Advanced Neopolitan 150 is ideal for high impact risk areas. Highly visible and safety conscious, this bollard enhances traffic calming schemes such as speed tables, crossings, junctions and chicanes.



Black Advanced Neopolitan 150 bollards with Red/White retroreflective\* patches.

\*All retroreflective materials supplied by Glasdon UK are as recommended in table NA1 of the National Annex of BS EN 12899-1 2007 Fixed Vertical Road Signs.

[www.safety4highways.com](http://www.safety4highways.com)

# Glasdon Manchester™ Bollard

Great for traffic calming schemes in heritage areas, Glasdon Manchester is a low maintenance alternative to the high maintenance cast iron bollard.

## LockFast™ Socket

LockFast socket boasts many benefits promoting accurate and easy bollard installation. Moulded-in product code aids correct bollard top replacement. The square shape of the socket prevents twisting during impact and is easier to pave around, and the flat base makes it easier to level.

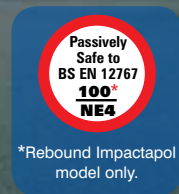
Available for use with Advanced Neopolitan 150 and Glasdon Manchester Bollards.



Black Glasdon Manchester bollards with Gold decorative bands.



Black Neopolitan 150 bollards with Red/White retroreflective\* bands.



## Neopolitan™ 150 Bollard

Neopolitan 150 Bollard features a large 150mm top reflector for maximum visibility, alerting drivers of traffic calming schemes within urban / suburban areas.

## 600mm High Neopolitan™ 150 Bollard

A reduced height Neopolitan 150 for improved visibility at junctions and on bridges.

Black 600mm High Neopolitan 150 bollards with Red/White retroreflective\* bands and Black Neopolitan 20 bollards with Red/White retroreflective bands.







## Neopolitan™ 20 Bollard

A durable, contemporary-styled bollard with two 20mm banding recesses.

## Admiral™ Bollard

A broad stemmed bollard ideal for use as a junction marker or for reinforcing traffic calming schemes.





Black Victory bollards with Red/White retroreflective\* bands.



\*Rebound Impactapol model only.



Black Jubilee bollards with Red/White body sleeve and retroreflective\* bands.

## Victory™ Bollard

Victory Bollard is a traditional Victorian cannon-style bollard made from thoroughly modern materials. At a fraction of the weight of metal bollards, one-person alone can easily install Victory bollards.

## Jubilee™ Bollard

A traditionally styled bollard available with versatile banding options for maximum visibility. Unlike cast iron equivalents, Jubilee bollards are low maintenance and never require painting.



# Sign Carrying Bollards



Dark Blue Mini Ensign Bollard with signface ref 957 reversed and Red retroreflective bands.

## Mini-Ensign™ Bollard

Mini-Ensign is a slimline sign-carrying bollard with a range of signface options such as cycle routes and directional arrows.



Passively  
Safe to  
BS EN 12767  
**100\***  
**NE4**

\*Rebound Impactapol  
model only.



White Illuminated Mini Ensign rebound bollard with Red/White translucent retroreflective bands.

## Illuminated Mini-Ensign™ Rebound Bollard

Illuminated Mini-Ensign rebound bollard can be used for schemes where increased visibility is required at night. Ideal for locations where bollards are used as cycle lane delineators, the illuminated Mini-Ensign alerts cyclists and drivers to a change in road layout.

## Ensign™ Bollard

Ensign Bollard is a large-faced, sign-carrying bollard that co-ordinates with Neopolitan bollards. Its 300mm signface is ideal to warn, inform and protect road users, cyclists and pedestrians.



Black Ensign bollard with Amber retroreflective body sleeve and signface ref 956.



## Neopolitan Signhead™ Bollard

Neopolitan Signhead has a narrow design taking up minimal space on the pavement. Ideal for use where only a single aspect sign face is required.

## Infomaster™ Bollard

Infomaster is a sign carrying bollard for larger rectangular sign faces. Ideal for displaying 661A disabled badge holder signs or enforcing other parking restrictions.





# Recycled Material Bollards

## Buffer™ Bollard

100% recycled, this impact-absorbing rubber bollard is ideal for use in car parks and confined areas that may be subject to low speed vehicle impacts.



600mm Black Buffer bollards with White retroreflective bands.





Black Round Top Enviropol bollards with Green decorative bands.

## Enviropol<sup>®</sup> Bollard

An economical, environmentally friendly recycled material bollard available in a flat or round top model.



Round top



Flat top



Black Round Top Enviropol bollards with white retroreflective bands.



## Chevroflex Ultra<sup>™</sup> Sign System

Chevroflex chevron boards are passively safe to BS EN 12767 for roundabouts and highlighting hazards on rural roads. Proven to cut costs and prevent accidents, Chevroflex Ultra exceeds industry standards for motorcycle friendly, passively safe street furniture. Impactaflex<sup>™</sup> material has been

specially developed to offer superior rigidity and resilience combined with class-leading recovery performance after a drive-through collision. The unique socket system allows the chevrons to be easily installed or replaced and can be configured with or without a high visibility border.





## Sublite Lumino™ LED Uplighter

It is a legal requirement to light the Diagram 606 signface on a roundabout chevron installation. Sublite Lumino LED Uplighter is designed to provide excellent levels of illumination while retaining the passive safety features of our Chevoflex Ultra Sign System.



# Verge & Hazard Marker Posts



# Vergemaster RX™ Marker Post

Vergemaster RX is a passively safe verge marker with wide-angle reflectors, providing delineation and highlighting bends in roads.







# Hazardmaster™ Marker Post

Hazardmaster is a traditional black and white delineator used to warn drivers of hazards on urban traffic calming schemes. With its robust construction, Hazardmaster is designed to withstand repeated wheel-over collisions.

## Hazardmaster Reflector Options



Red & White



Amber & Amber



\*All retroreflective materials supplied by Glasdon UK are as recommended in table NA1 of the National Annex of BS EN 12899-1 2007 Fixed Vertical Road Signs.

[www.safety4highways.com](http://www.safety4highways.com)

# Flexmaster™ Marker Post

Flexmaster is a self righting verge post with versatile signage options. The flexible “knock-down, spring-back” property makes Flexmaster ideal for high-risk locations.



## Glenwood™ Post

Glenwood is a strong and robust timber-effect post that requires minimal maintenance. The rustic aesthetic of the post makes it ideal for verge protection or marking cycle routes in rural schemes.



Black Edgeliner rebound bollards with Red/White retroreflective bands.



White Edgeliner bollard.

## Edgeliner™ Bollard

Edgeliner is a durable mini bollard to protect grass verges from vehicle damage. Suitable for hard or soft landscaping, Edgeliner is available as a rigid or rebound model.

20



White Edgemaster 20 marker post

## Edgemaster 20™ Post

Edgemaster is a slimline marker post manufactured from a tough Durapol material. This low cost and low-maintenance verge marker is an economical solution to prevent people from parking on grass verges.

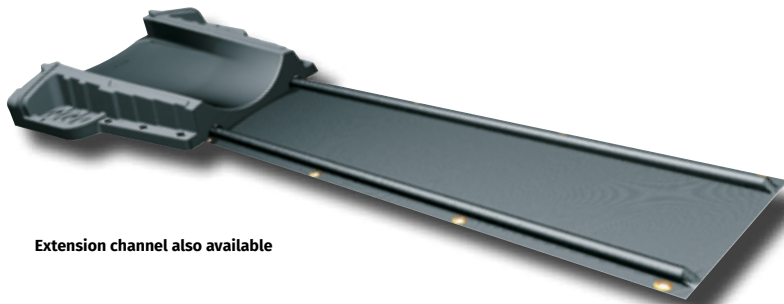
[www.safety4highways.com](http://www.safety4highways.com)





## Drainagemaster™ Drainage Grip

A cost-effective offlet solution to the problem of surface water. Drainagemaster efficiently channels running and pooling water from rural road surfaces into a parallel drainage ditch. The robust side ridges allow vehicles to drive over the unit without damage. With an installation time of only 15 minutes, Drainagemaster offers a quick solution to aquaplaning hazards.



Extension channel also available



# Village Gateways

## Glasdon Gateway

Glasdon Gateway, made from Everwood material, is an attractive, low-maintenance alternative to traditional wooden gates used to welcome visitors at the entrances and exits of towns and villages.

Glasdon Gateway is extremely versatile and can be specified to your exact requirements.

Everwood™ Material is an extremely realistic timber grain polymer that requires minimal maintenance and will last for many years ahead. There is no need to paint or varnish Everwood, it is vandal and weather resistant, and will never warp or rot.



White, 1800mm x 2000mm L Shaped model with 4 slats.










We provide a large range of Passively Safe road safety products which have passed an independent test. This recommended standard reduces the severity of injury to occupants of vehicles if there is impact. All of our Passively Safe products are tested to BS EN 12767 standard. Visit our website [www.safety4highways.com](http://www.safety4highways.com) to see our full range.

[www.safety4highways.com](http://www.safety4highways.com)



 **Glasdon** Admiral, Advanced Neopolitan, Buffer, Chevroflex Ultra, Drainagemaster, Durapol, Edgeliner, Edgemaster 20, Ensign, Enviropol, Everwood, Flexmaster, Glasdon Manchester, Glenwood, Hazardmaster, Impactaflex, Impactapol, Infomaster, Jubilee, LockFast, Mini-Ensign, Neopolitan, Neopolitan Signhead, Sublite Lumino, Vergemaster RX and Victory are trademarks or registered trademarks of GLASDON Group or its subsidiaries in the UK and other countries.

Glasdon Group Limited Is An Equal Opportunities Employer.

© Glasdon UK Ltd. 06/2016 Glasdon reserve the right to alter price and specification without prior notice. PN/



When you have finished with this leaflet please recycle it

