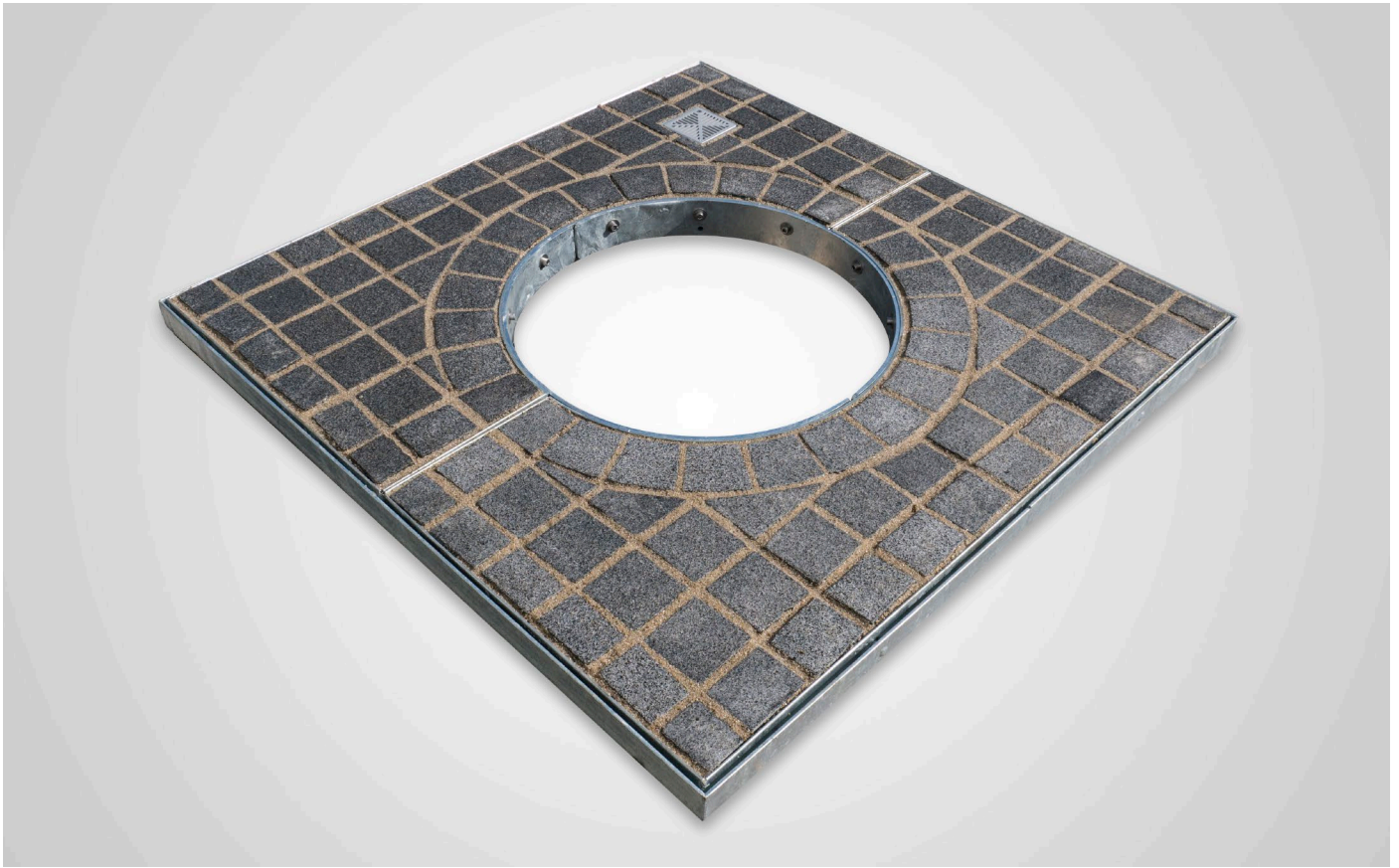


# SettStone Precast Tree Grille



## Product Overview

A brand-new development by GBU provides an excellent new paved finish to the popular 1200mm square Precast tree grille. Permeable materials mean the SuDS compliant grille remains highly porous. This is a high strength grille which is simple to assemble.

## Features

- Permeable materials
- High strength design
- Unique GBU grille design

## Benefits

- SuDS compliant
- Can be used even in trafficked areas
- Simple assembly
- Theft proof



## Technical Specification

Material	Finish	Colour
- Mild Steel - Stone	Steel: Galvanised Stone: Natural	Stone: Grey
Code	Dimensions	Variation
SSPC12UGA	1200 x 1200mm square, 50mm deep	Urban Grey



## Storage

- Not applicable



## Maintenance

- Minimal maintenance required - refer to O&M manual available on request