

# ArborCharge

## Enabling smarter, greener cities with EV Charging, SuDS & urban tree planting

Meet the GreenBlue Urban **ArborSystem** combined with **ArborFlow** to create **ArborCharge**. Working with leading EV infrastructure suppliers, the new package is simple to implement and meets many of the policies and aspirations set out by the government and local authorities, from sustainable **drainage systems**, **pollution-free** travel, **reduction of temperatures** in urban areas, **improved air quality** and other environmental interventions that will improve the quality of life for workers, residents and those who visit.



ArborSystem  
manufactured from  
100% recycled  
material



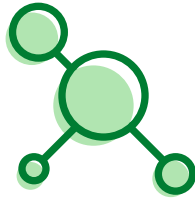
Establishing the future urban landscape

[greenblue.com](https://greenblue.com)

# Why choose **ArborCharge** for EV charging?



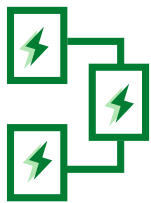
Smart & connected EV chargers with market leading reliability.



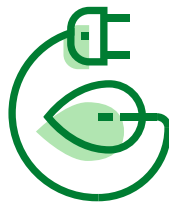
Enables the integration of further IoT services (5G) to monitor air quality, traffic and more.



Ideal for use in areas where above ground space is at a premium.



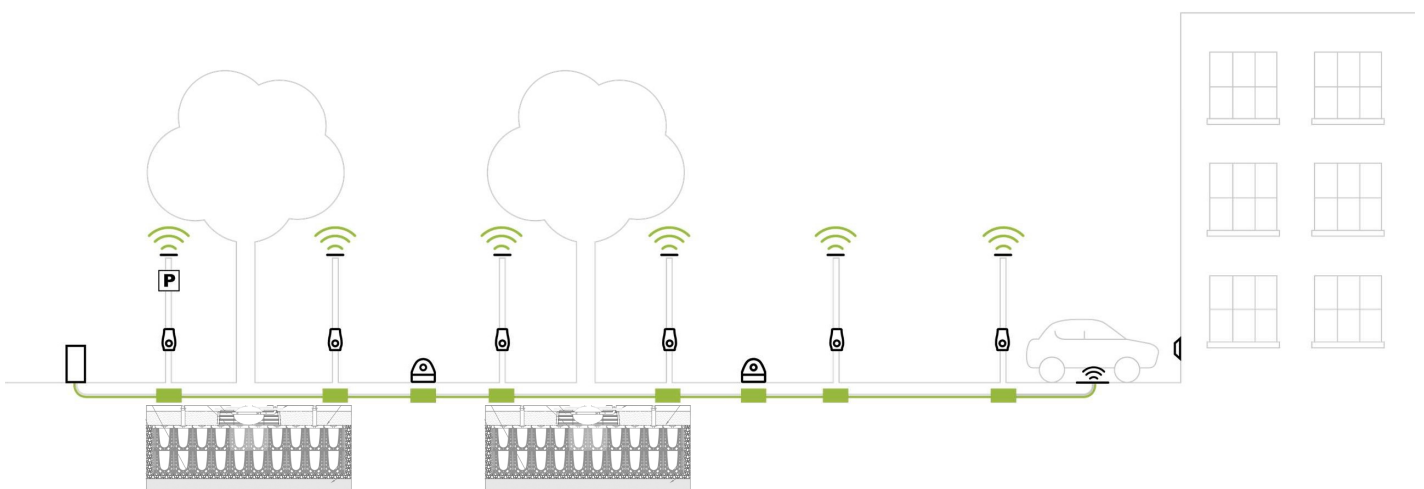
EV Charging system is scalable and modular, making future expansion simple.



Save money on costly excavation for either tree pits or EV charger installation by combining both.



Combine EV charging with long term urban tree planting & SuDS systems for stormwater management.



[greenblue.com](https://greenblue.com)

**GreenBlue**  
URBAN

Establishing the future urban landscape