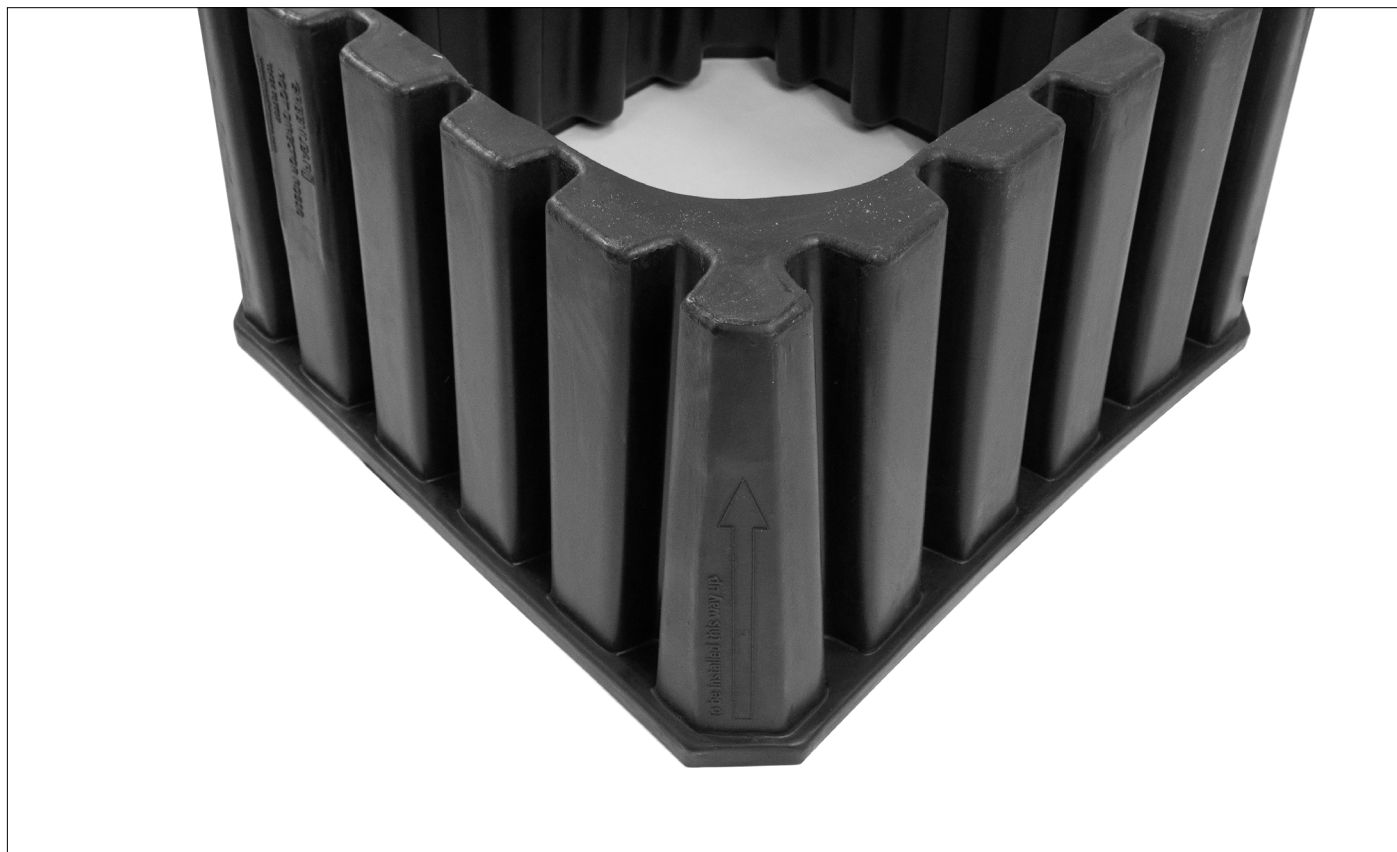


RootDirector

Modular root management.



Designed for the protection of pavements and hard landscaped areas, the ribbed RootDirector system prevents root girdling and diverts root growth downward and outward thus avoiding the unsightly and hazardous root damage so commonly seen in urban areas.

Overview

The RootDirector's rigid, one-piece construction makes installation simple. As a product within the 'Arborsystem' range, it is compatible with the RootRain irrigation system, RootCell / StrataCell load bearing soil structure and our extensive tree grille and guard range. The RootDirector 'RS' range is specially designed to locate securely into the RootSpace soil cell system.

Features

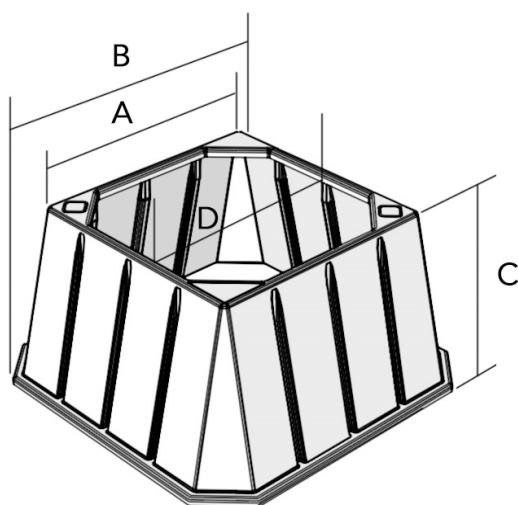
- Modular preformed construction
- Integral ribs to prevent root girdling
- 'RS' range fits RootSpace soil cells
- Stackable for ease of transport

Benefits

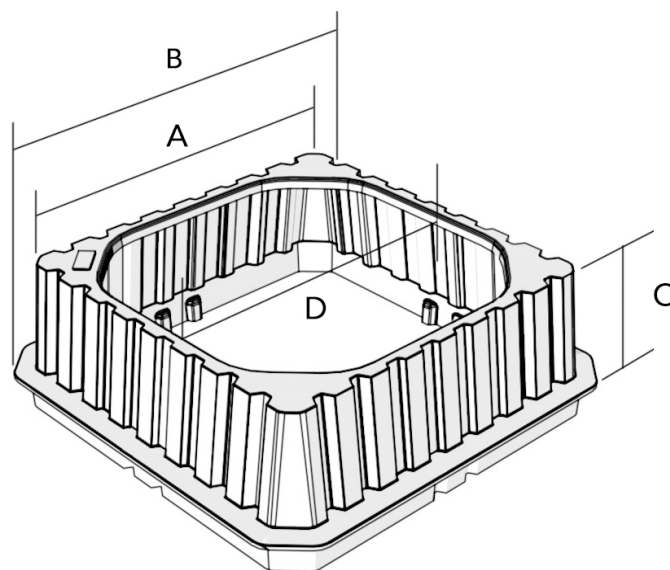
- Prevents 'root girdling' – a fatal rooting pattern
- Deeper root growth improves drought tolerance, tree stability and longevity
- Guides roots away from areas vulnerable to de-icing salts
- Prevents pavement 'root heave' effectively eliminating trip hazards
- Super fast installation - no cutting or joining tape

Product variations / dimensions	Code	A - Top (mm)	B - Base (mm)	C - Depth (mm)	D - Opening (mm)	Min tree grille size (mm)	Pallet Quantity
	RD510A	510	595	310	425	600	
	RD610H	510x610	595x695	310	410x510	1000	
	RD640A	630	885	455	575	1000	
	RD1050A	975	1370	545	860	1200	
	RD1400A	1300	1805	500	1200	1500	
	RD1000=RSA	888	980	250	800	1200	
	RD1500-RSA	1388	1480	250	1300	1800	

RD Products



RSA Products



Performance

Service life: In excess of 50 years
Permeability: ReRoot is completely impervious to moisture and root penetration
 Thick walls are extremely robust and durable against harsh site treatment

Material specification

100% recycled polyethylene
Durability: HDPE is resistant to puncture, biodegradation, photodegradation, bacteria and most chemicals
 100% recyclable