

StrataCell

Soil Structure System

Product Information: StrataCell



Manufactured
from 100%
recycled
materials.

CONTENTS:

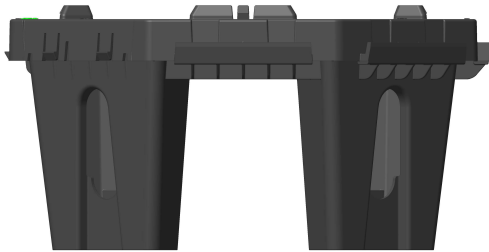
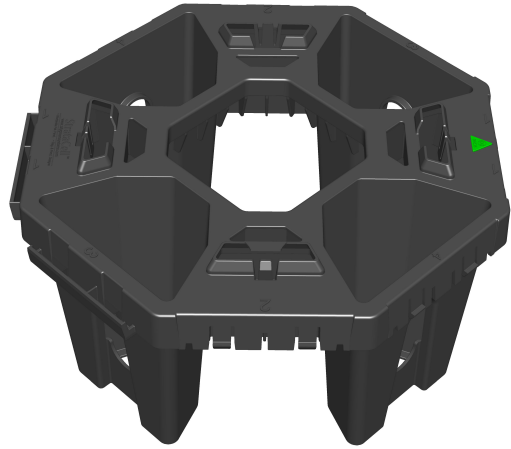
- Product Information Sheets
- Technical Data Sheets

StrataCell

Soil Structure System

Designed to highly advanced engineering specifications to support greater vertical loads, StrataCell brings tree-root systems closer to pavement surfaces. Engineers have calculated that, with only 300mm of granular pavement depth, a StrataCell matrix can support maximum traffic loads.

Load bearing Geonet is laid over the top of the StrataCell structure to prevent the ingress of the surface sub-base into the rooting area.



Large void spaces between columns.

BENEFITS:

- Integrated matrix means modules are simple and fast to click together.
- In excess of 94% of total soil volume is available for tree-root growth.
- Generously designed apertures permit common conduits, service pipes and aeration systems.
- Significant volume reduction for freight and lower transport costs.
- Reduced installation costs.
- Constructed from 100% recycled material.
- Designed to support enormous vertical as well as lateral loads.
- Excellent modular strength.



StrataCell

Soil Structure System



Load bearing deck for spanning shared utility trench.

StrataCell Module Specification

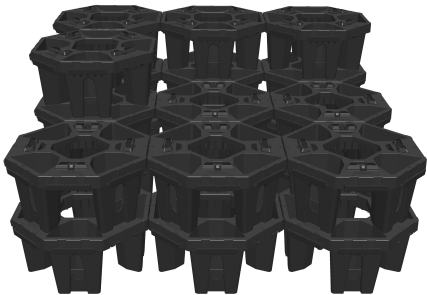
Description:	Recycled plastic rigid skeletal interlocking octagonal structure
Material:	Advanced glass reinforced polymer
Dimensions:	500mm x 500mm x 250mm

StrataCell Module Specification

Code	Description	Load Capacity
GLSCM60A	StrataCell 60 Series Module	550kpa
GLSCM30A	StrataCell 30 Series Module	260kpa
RRARBVDI3D	RootRain ArborVent 100 (Double Inlet)	
GLTWGNA	Load bearing Geonet membrane	
GRN20	Load Bearing Geonet	



Interstacked for shipping.



Easy clip together matrix design.

AFFILIATED STRATACELL PRODUCTS

- Root Management
- Underground root ball guying
- Tree grilles and guards
- Porous resin bound gravel

TYPICAL INSTALLATION SPECIFICATION

Please contact GreenBlue Urban for full installation specification.

StrataCell 60 Series

Soil Structure System

Type

Large structural soil support module

Code

GLSCM60A

500mm x 500mm x 250mm

Material

Recycled glass reinforced
polypropylene

Load Bearing Capacity

550 kPa vertical load

Finish

Natural

Colour

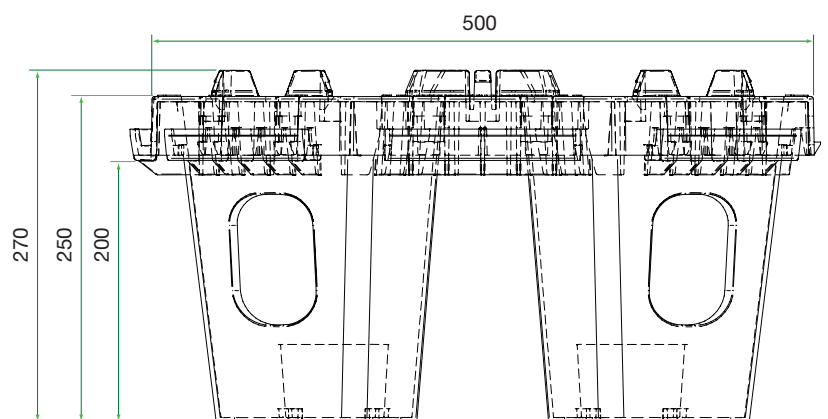
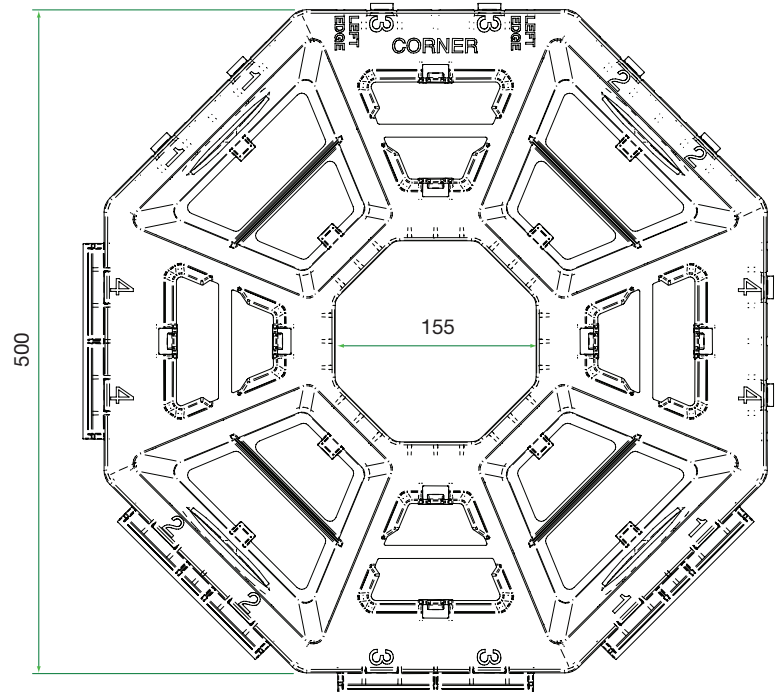
Black

Weight

3.86 kg

Void/Soil

94%



StrataCell 30 Series

Soil Structure System

Type

Large structural soil support module

Code

GLSCM30A

500mm x 500mm x 250mm

Material

Recycled glass reinforced
polypropylene

Load Bearing Capacity

260 kPa vertical load

Finish

Natural

Colour

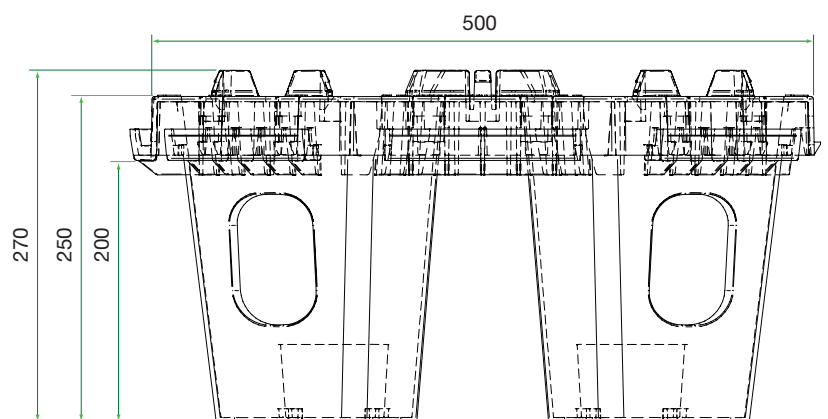
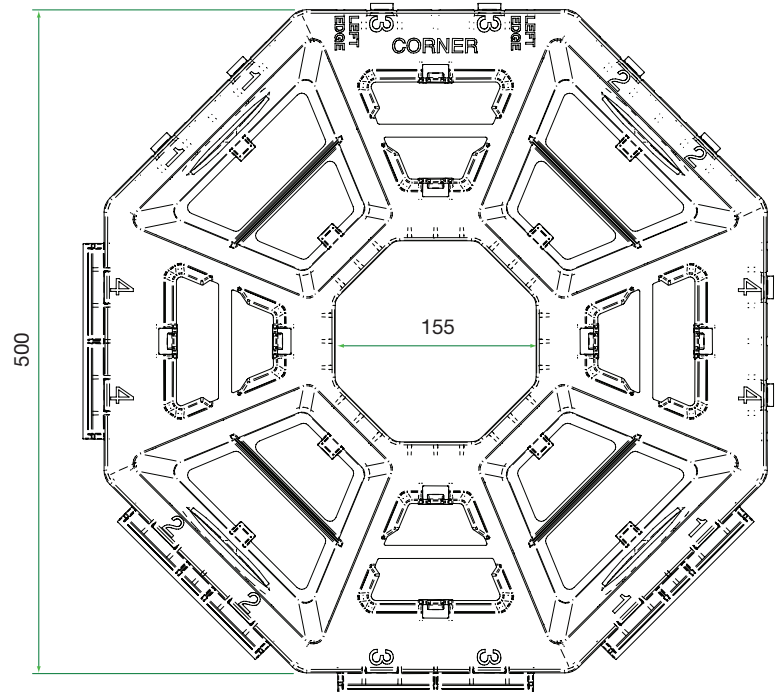
Black

Weight

3.86 kg

Void/Soil

94%



RootRain ArborVent 100

Double Inlet (For use with StrataCell as aeration)

Type

Aeration system with 60mm diameter perforated pipe and 100mm x 100mm aluminium inlet.

Code

RRARBVDI3D

Size (Length)

8m pipe

Inlet

Double

Material

Body LM6 aluminium, lid 5083 aluminium, pipe polypropylene, tee recycled HDPE.

Finish

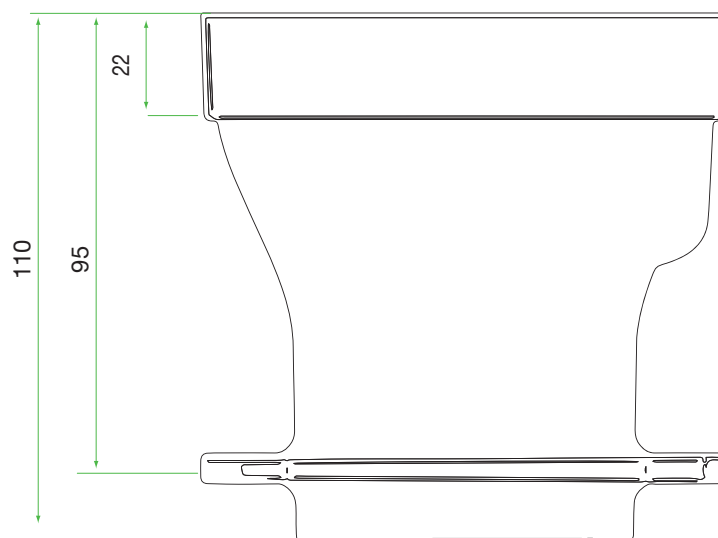
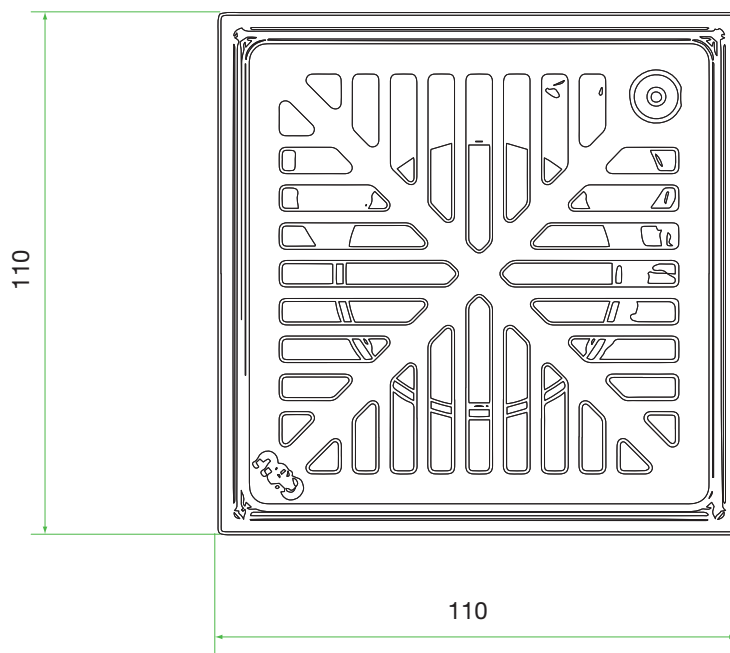
Body cast with finished top edge, lid anodised.

Colour

Body and lid natural aluminium, pipe tee black.

Weight

4.06 kg



StrataCell

Soil Structure System

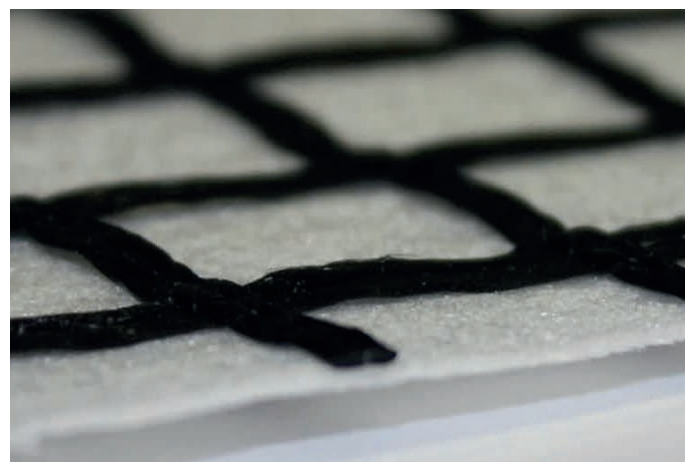
The Twin Wall Geonet is laid over the top of the StrataCell units to provide a breathable membrane that stops stone and other building material from entering StrataCell whilst also providing a stable platform to stop above ground movement.

The GRN20 is also an essential part of any successful StrataCell installation, providing a stable base for StrataCell installs should the ground beneath move or subside.



Flexible Geonet for Soil Reinforcement

Type:	Flexible Geonet
Code:	GRN20
Dimensions:	1m wide x 200m long roll
Mesh Size:	20mm x 20mm
Weight:	~ 210 g/m ²
Material:	Polyethylene
Colour:	Black
Finish:	Natural



Twin Wall Load Bearing Geonet

Raw material

Grid	PET
Nonwoven	150 g/m ² PP
Coating	Polymer

Weight

EN ISO 9864	~420 g/m ²
-------------	-----------------------

Ultimate tensile strength

EN ISO 10.319		
Longitudinal	≥40	kN/m
Transversal	≥40	kN/m

Strain at nominal tensile strength

EN ISO 10.319		
Longitudinal	≥12.5	%
Transversal	≥12.5	%

Mesh size of Geogrid

25x25 mm

Opening size

EN ISO 12956	~0,10	mm
--------------	-------	----

Opening size

EN ISO 11058	~75	x 10-3 m/s
--------------	-----	------------

Standard dimension

Width x length	1m	100m
----------------	----	------

No responsibility is accepted for any change in product properties due to environmental influences and / or improper application or handling. Rights are reserved to modify the product to effect improvements.



GreenBlue Urban Ltd

Northpoint | Compass Park |
Junction Road | Bodiam |
East Sussex | TN32 5BS

T: +44 (0)1580 830 800

E: enquiries@greenblueurban.com

greenblue.com