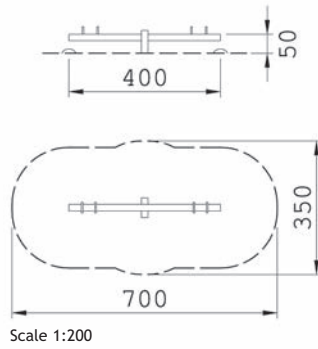
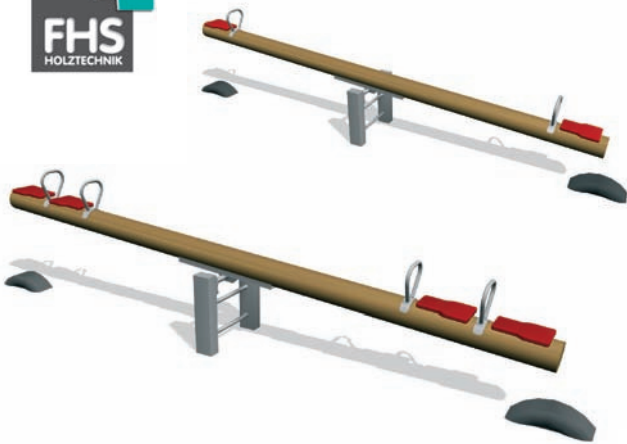




Seesaw, two- and four-seater
Seesaw with impact absorber, two-seater only
Standing seesaw



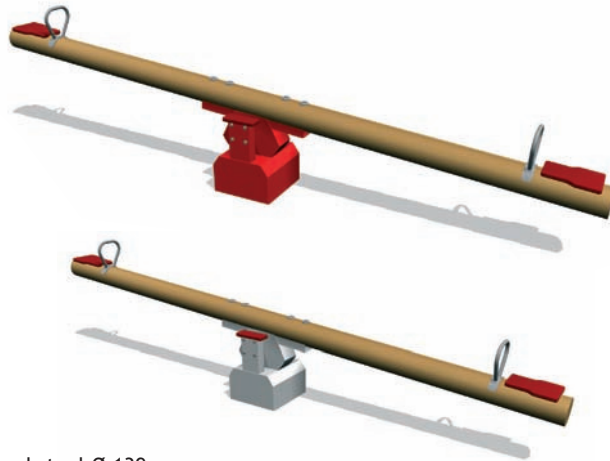
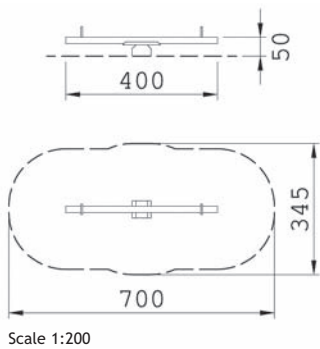
- 1 x 60 x 90 x 80 cm
 - 1 x 80 x 80 x 80 cm
 - 2 x 60 x 60 x 80 cm
- Concrete needed:
ca. 0.30 m³

- Total weight:
- ca. 110 kg
 - ca. 140 kg
 - ca. 290 kg
- Heaviest individual part:
- 47 kg
 - 90 kg
 - 140 kg

Seesaws ●

				galv.
two-seater	904721200 K	904721200 L	904721200 R	90472120 VS
four-seater	904721400 K	904721400 L	904721400 R	90472140 VS

- ● ● ca. 2 P. x ca. 1.0 - 2.0 h



Seesaw beam Ø 16 / 18 cm or made of galvanised steel Ø 139 mm,
base made of galvanised U-shaped steel/robinia Ø 16 - 18 cm;
tubular stainless steel handles Ø 33 mm, seesaw seats made of PE..

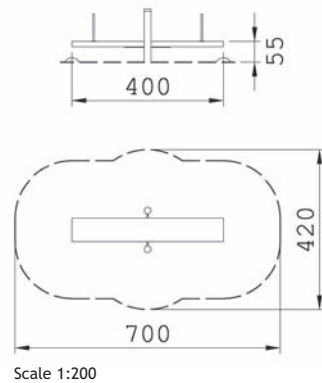
- ● ● 4 - 10 years

- ● ● 1.00 m

EN 1176

Seesaws ●

				galv.
two-seater with galvanised impact absorbers	904722200 K	904722200 L	904722200 R	90472220 VS
two-seater with galvanised + painted impact absorbers	904722300 K	904722300 L	904722300 R	90472230 VS



Stand space Ø 14 cm,
posts coniferous wood model in steel Ø 139 mm /
robinia Ø 16 - 18 cm;
tubular stainless steel handles Ø 33 mm.

Design options

Coniferous wood:
Spruce/pine, green,
on galv. steel feet

Coniferous wood:
Larch/Douglas fir,
glazed, on galv. steel
feet

Robinia / oak, glazed

Stahl galv.

Standing seesaw ●	904723100 K	904723100 L	904723100 R	
► Subject to technical modifications		► regular maintenance checks		