

# Get to know our timber



Quirky, bespoke and hand crafted timber from Jupiter Play

Is using a timber product in your local outdoor play space right for you? Here at Jupiter play we would argue - Yes! As long as you use the right materials and consider the complete play space design; timber products can really add play value and a stunning feature for the entire community to enjoy.

At Jupiter Play we pride ourselves on working with the best suppliers in the market and FHS Holtztechnik is no exception. But The raw material is only the beginning. FHS have developed many unique quality processes before they even begin to craft the timber to ensure the long term sustainability of the final product.

## Timber properties

Jupiter Play only use the highest quality timber in the construction of their products. This ensures the maximum life term possible and structural integrity.

### Heart wood:

- Highest quality properties
- Durable enough for construction
- No need for surface treatment (glaze)
- Natural untreated, silvery patina occurs
- Brilliant paint application properties
- Preparation required for manual removal of the sapwood

### Sap wood Layer:

- Not all suppliers remove the sapwood.
- Timber rots quickly if sapwood is not removed.
- Pest infestation can be expected if sapwood is not removed.
- Sapwood is not an appropriate subsurface for glazes, it becomes difficult to paint or protect.
- Leaving sapwood can in time effect the timber integrity.

### Outer layer:

- Tree Bark

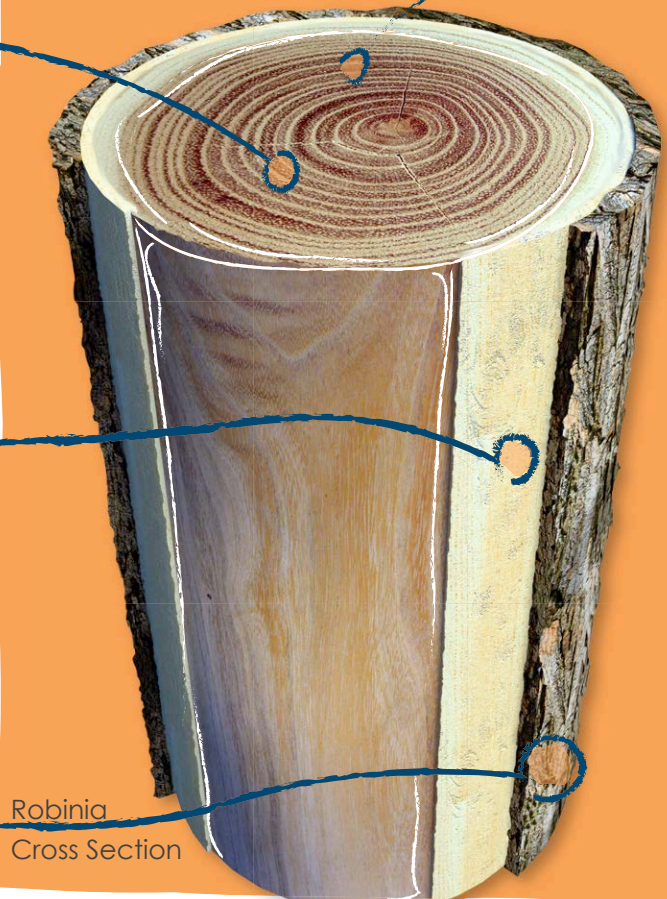
## Strength in Robinia timber

There is a wide variety of timber play equipment available in the UK. Jupiter Play is the sole distributor of the FHS Holtztechnik range, manufactured in a variety of timbers including Pine, Larch and Robinia.

Each type of timber has its own application in the market. However, as with any investment it is key to demonstrate value for money, Robinia products offer this and much more, and here's why.....

The density of timber and its resistance to decay is classified on a scale of 1-5 according to the EU standard for durability of wood (BS EN 350-2). Class 1 is categorised as the most robust.

Type	Class
<b>Robinia</b>	<b>class 1</b>
Oak	class 2
Larch	class 3
Douglas Fir	class 3
Pine	class 4





# Robinia Pre-treatment Process

## Step one – Resting the timber

FHS fell the tree in the winter months and leave the timbers to rest for up to three years. This resting period is crucial as it allows FHS to ascertain if any cut wood have developed unacceptable splits which render the wood unsuitable for use. This is our guarantee that we are supplying products with timbers that are fit for purpose.

## Step two - Removal of bark and sap

This is a unique process and is a vital component in reducing maintenance requirements and preserving the overall appearance of the product. Removal of the bark and sap is crucial to preventing rotting. If the sap is left on, not only will it become very grey and dull but within two years the sap will flake away. The rotting can create a gap between the upright timbers and adjoining platforms, fixings and foundations, rendering it structurally unsound.

## Step three – Removal of knots

All knots in the timbers are assessed by drilling out the knot to determine the depth and therefore if the section of timber is still suitable to use. Small knots are removed and in-filled with non-toxic wood filler. The other reason for this is to stop the knot from seeping, which is unsightly and can stain clothing.

## Step four – cross bolting the timbers

It's a fact that any timber product will move and split, this is the charm of working with a natural material. FHS combat this by drilling through the ends of the posts and inserting two bolts in a cross formation to prevent the timber from splaying. **Not all Robinia suppliers can offer this level of pre-treatment and we suggest you ask before making a purchase.**

Robinia wood is one of only a few species growing in Europe that is categorised resistance class 1. This demonstrates that it has an extremely dense composition which means:

- Robinia timber does not require any pressure treatment, tanalisation or chemical protection.

- Robinia is hard to set fire to and if it does set alight it burns very slowly. This is due to the lack of oxygen within the wood which is required to accelerate combustion. Any fire damage is limited to the external surface which can be easily removed by sanding the timber down.

