



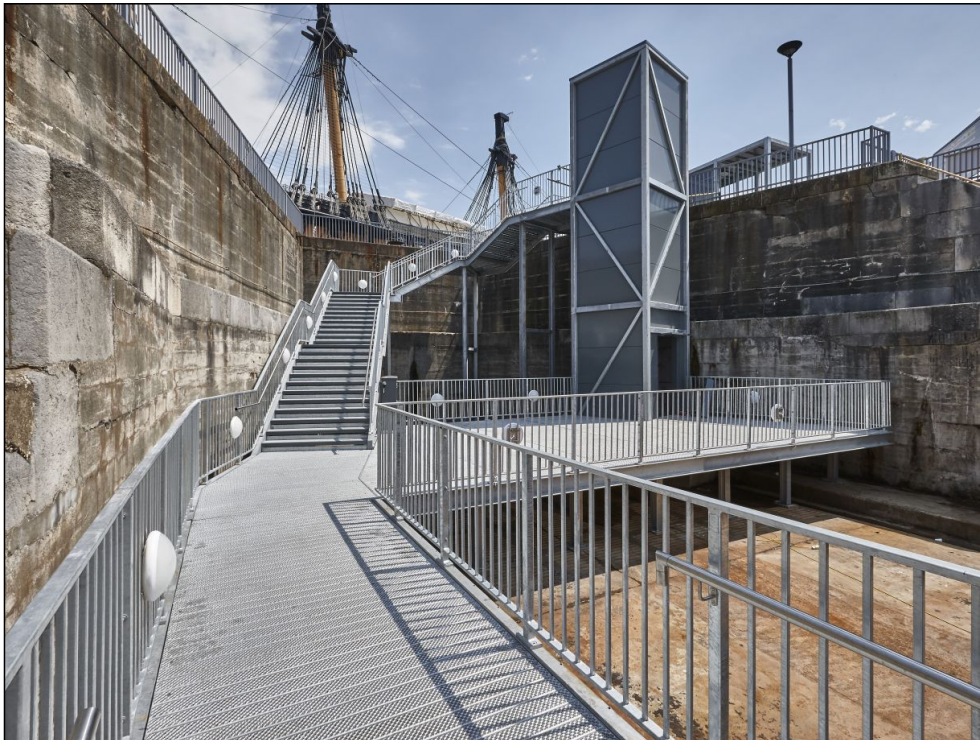
Stair Treads/Landings

Type O5-M - 1800mm span x 325mm incl cranked riser (Galvanised with Polyester Powder Coated Nosing)



Walkways

Type O5 - 100x45/15x2mm fabricated into panels (Galvanised)



Walkways

Type O5 - 100x45/15x2mm fabricated into panels (Galvanised)



Walkways

Type O5 - 100x45/15x2mm fabricated into panels (Galvanised)



Stair Treads/Landings

Type O5-M - 1800mm span x 325mm incl cranked riser (Galvanised with Polyester Powder Coated Nosing)



Stair Treads/Landings

Type O5-M - 1800mm span x 325mm incl cranked riser (Galvanised with Polyester Powder Coated Nosing)