

DS010
Issue 01



SAFETY AT THE HIGHEST LEVEL

Easi-Dec Dormer Platform System

Assembly Instructions



Easi-Dec Access Systems Ltd.,
Merlin House,
Blaydon Road,
Sandy
SG19 1RZ
Tel: +44 (0) 1767 691812
Fax: +44 (0) 1767 691802

E-Mail: info@easi-dec.com
Internet: www.easi-dec.com

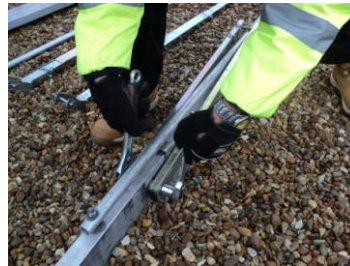
PLEASE BE ADVISED: Before assembling the Dormer system for the first time, it is highly recommended that Installers familiarise themselves with the component parts and carry out a test assembly and disassembly in a safe area away from the point of final installation. All component parts detailed in the operating instructions must be used in the assembly of the system. Should a piece be missing or appear defective do not continue to assemble and contact Easi-Dec Immediately.

Step 1



Lay out the components ready for assembly.

Step 2



Using 2 x 19mm spanners remove the standard Dec Struts and replace with the Dormer Dec Struts supplied with the Kit.

Step 3



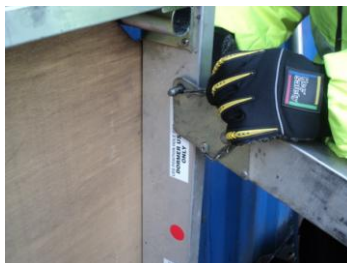
Replace the wheels on the Platform with the Dormer Bars supplied with the Dormer kits. Secure with two bolts and Wing Nuts.

Step 4



Lay out the components ready for assembly with the Platform against the wall with the Dormer Bars on the ground ready for assembly. Identify the corresponding leg for each side of the platform (Green - Left / Red - Right)

Step 5



Fit both Legs using the Pins and 'R' Clips provided and ensure that the pins are inserted outside in, to minimise the risk of the 'R' Clips being Knocked out. **REMEMBER:** Fit the Legs to the 'Dormer use only' hole Labelled on the underside of the platform.

Step 6



Swing the Dec support struts and secure with the Pins and 'R' Clips provided.

Step 7



Pull out the Clips and release the two Cross Braces from their stowed position.

Step 8



Fit the Horizontal Brace over the retaining studs.

Step 9



Swing out each Diagonal Brace over to the opposite Leg.

Step 10



Secure each Brace onto the retaining studs using the 'R' Clips provided, In a downward position.

Step 11



With bent Legs and a straight back, lift the Platform firstly to waist height, then using your arms to offer it to the roof and lift it into position.

NOTE: Pay particular attention to the balance of the Platform, the position of the handhold and the way the Claw Foot grips while taking a second handhold.

Step 12



Adjust the height by removing the two Leg Pins and Lifting the Platform up the roof to the desired height and replace both Leg Pins remembering to also replace the safety 'R' Clips provided. Ensure the Platform is level.

Step 13



The Feet maybe adjusted in 25mm increments but in extreme cases either Leg can be adjusted Independently. Fit the Pin and 'R' Clip to secure.

Step 14



Fit the back Legs by removing the middle Pin first, holding onto it and lowering the Brace.

Step 15



Remove the top Pin and fit to the Back Leg at about eye level to the Main Leg.

Step 16



When fitting the Brace, position the foot as close to the wall as possible without fouling the wall or touching the ground. Fit the Pin and 'R' Clip.

Step 17



Drop the Feet to the ground and take them back up to the next hole and secure with the pin and 'R' Clip. Ideally a finger's clearance under them will ensure the Easi-Dec remains in contact with the Roof.

Step 18



The Ladder is placed against the Platform, extended 1 metre above Platform level between the Ladder Restraints and sided to the right to allow enough room to step through on the left hand side.

Step 19



Fig 3. Easi-Dec Ladder spurs.

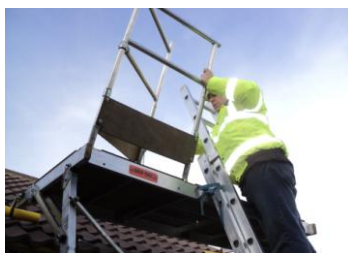
Foot the Ladder or use a suitable Ladder safety device, such as Easi-Dec Ladder spurs shown in **Fig 3**. Climb the Ladder and Tie off both sides with the Ladder Ties provided.

Step 20



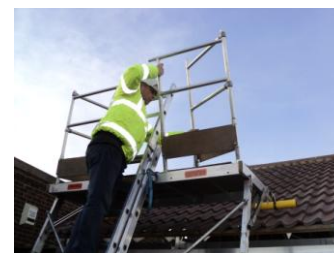
Positions the Left Guardrail over your shoulder, when climbing the Ladder maintain three points of contact. **REMEMBER:** When fitting the Guardrail to the Right hand side of the Platform carry up on the Right shoulder.

Step 21



Feed one arm through the top rung of the Ladder this provides a handhold when offering the Guardrail into position. **(NOTE: This is why the Ladder needs to be extended above the platform by 1 metre to provide a handhold)**

Step 22



Fit the Right hand guardrail into the two front sockets and gently ease the back of the Guardrail open. **REMEMBER:** Always have your arm through the top rung of the Ladder when positioning these guardrails.

Step 23



Climb onto the Platform and position the rear uprights into the rear locating sockets on the Platform for both the Left and right handed Guardrail.

Step 24



Close the Safety Draw Bar and lock in to position. Raise the Toe board across the Ladder access point to complete the assembly.

Remember

- Back legs must be fitted.
- All Ladders should be erected using 4:1 rule and tied off for maximum safety.
- Always assess the site for suitability. Top fixing the Dec and/or spiking of the feet maybe required.
- Always Tie off the Platform.
- Always tie off the Dec to the structure with a suitable Ring Bolt anchor for the base material and make sure it is installed correctly as per manufacturer's instruction.
- It is important when handling the Easi-Dec products in elevated weather temperatures that the appropriate PPE is used.
- Maximum Roof Pitch is 40 degrees

Warning - Do Not step off the Platform onto the roof.

Dismantle: Reverse the above assembly.