



**SAFETY AT THE HIGHEST LEVEL**

# **Easi-Dec Double Dormer Platform System**

## **Assembly Instructions**



Easi-Dec Access Systems Ltd.,  
Merlin House,  
Blaydon Road,  
Sandy  
SG19 1RZ  
Tel: +44 (0) 1767 691812  
Fax: +44 (0) 1767 691802

E-Mail: [info@easi-dec.com](mailto:info@easi-dec.com)  
Internet: [www.easi-dec.com](http://www.easi-dec.com)

**PLEASE BE ADVISED:** Before assembling the Double Dormer system for the first time, it is highly recommended that Installers familiarise themselves with the component parts and carry out a test assembly and disassembly in a safe area away from the point of final installation. All component parts detailed in the operating instructions must be used in the assembly of the system. Should a piece be missing or appear defective do not continue to assemble and contact Easi-Dec Immediately.

**Step 1**



Lay out the components ready for assembly.

**Step 2**



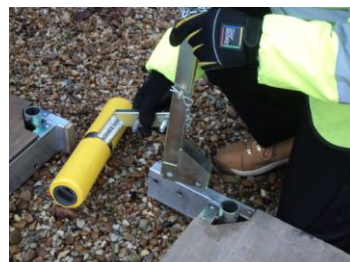
Using a 17mm spanner remove the Leg braces and replace with the Dormer Dec struts supplied with the Kit.

**Step 3**



Replace the wheels on one of the two platforms with the Dormer Bars supplied with the Dormer kits. Secure with two bolts and wing Nuts.

**Step 4**



**Fig 1.** Secured into Position.

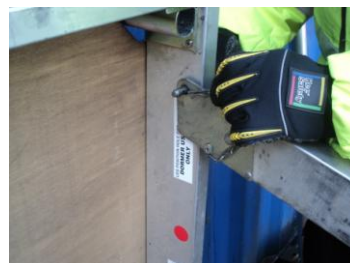
On the second platform fit the Telescopic struts which are positioned over the horn of the platform with the Dormer Bars positioned from the outside and the secured together with two bolts and wing Nuts. See **Fig 1.**

**Step 5**



Lay out the components ready for assembly with the platform against the wall with wheels on the ground. Identify the corresponding leg for each side of the platform (Green – Left / Red – Right)

**Step 6**



Fit both Legs using the pins and 'R' Clips provided and ensure that the pins are inserted outside in, to minimise the risk of the 'R' Clips being Knocked out. **REMEMBER:** Fit the Legs to the 'Dormer use only' hole Labelled on the underside of the platform.

**Step 7**



Swing the Dec support struts and secure with the pins and 'R' Clips provided.

**Step 8**



Pull out the clips and release the two Cross Braces from their stowed position.

**Step 9**



Fit the Horizontal Cross Brace over the retaining studs.

**Step 10**



**Fig 2.** Secure brace.

Swing out each brace over to the opposite Leg and secure onto the retaining stud using the two 'R' clips provided. **Fig 2.**

**Step 11**



Lift the Easi-Dec up to waist height with bent Legs and a straight back, firstly to waist height, then using your arms to offer it to the wall and roll it up onto the roof.  
**NOTE:** Pay particular attention to the balance of the Easi-Dec, the position of the handhold and the way the Claw grips while taking a second handhold.

**Step 12**



Adjust the height by removing the two Leg Pins and rolling the Easi-Dec up the wall to the desired height and replace both Leg pins remembering to also replace the safety 'R' Clips provided. After adjusting to height it will be necessary to re-level the Easi-Dec by moving the feet either away or towards the wall.

**Step 13**



The Feet maybe adjusted in 30mm increments but in extreme cases either Leg can be adjusted Independently. Fit Pin and 'R' Clip to secure.

**Step 14**



Fit the back Legs by removing the middle pin first, holding onto it and lowering the brace.

**Step 15**



Remove top pin and fit to the back Leg at about eye level.

**Step 16**



When fitting the Brace, position the foot as close to the wall as possible without fouling on the wall or touching the ground. Fit the pin and 'R' Clip.

**Step 17**



Drop the feet to the ground and take it up to the next hole and secure with the pin and 'R' Clip. Ideally a finger's clearance under them to ensure the Easi-Dec remains in contact with the wall

**Step 18**



The Ladder is placed against the Platform, extended 1 metre above platform level between the Tie in Lugs of the Platform and sided to the right to allow enough room to step through on the left hand side.

**Step 19**



**Fig 3.** Easi-Dec Ladder spurs.

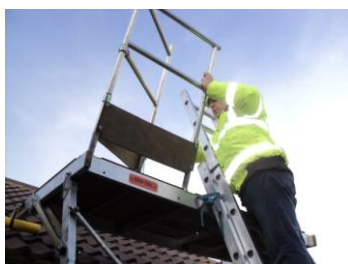
Foot the Ladder or use a suitable Ladder safety device, such as Easi-Dec Ladder spurs shown in **Fig 3.** Climb the ladder and Tie off both sides with the Ladder ties provided.

**Step 20**



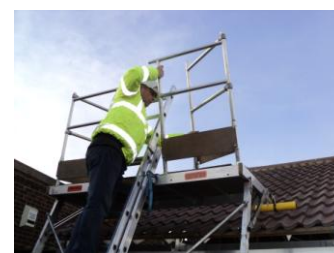
Position the Guardrail over your shoulder, when climbing the Ladder maintain three points of contact. **REMEMBER:** When fitting the Guardrail to the right hand side of the Platform carry up on the right shoulder and these steps are repeated for the Left side.

**Step 17**



Feed one arm through the top rung of the Ladder this provides a handhold when offering the Guardrail into position. **(NOTE: This is why the Ladder needs to be extended above the platform by 1 metre to provide a handhold)**

**Step 18**



Fit the Right hand guardrail into the two front sockets and gently ease the back of the Guardrail open. **REMEMBER:** Always have your arm through the top rung of the Ladder when positioning these guardrails. Repeat these steps for the Left hand Guard rail.

### Step 19



Climb onto the Platform and position the rear uprights into the rear locating sockets on the platform for both the Left and right handed Guardrail.

### Step 20



Close the Safety Draw Bar and lock in to position.

### Step 21



Tie straps around the legs if the level of the platform is above roof line. **Note:** The reason for this is the Eye bolt attached to the front of the Dec is above wall level, fixing to a solid fixing could be difficult.

### Step 22



Tie straps back to the eye bolt fixed to a solid substrate.

### Step 23



Secure all the uprights in the locating sockets with the pins and 'R' Clips provided.

### Step 24



Tie and secure Rope around each of the Dormer Bars.

### Step 25



Position the second platform against the ladder ready for towing.

### Step 26



The platform needs to be lifted up into position. With both operatives safely positioned on the platform with the safety draw bar safely locked into position. The second platform is towed up to the first platform using the Ladder as a guide.

**Step 27**



Lift the platform over to the roof side ready for final positioning.

**Step 28**



Gently swing kick the bottom of the Easi-Dec up the roof then roll into position.

**Step 29**



With both operatives on the platform guide the platform into the Telescopic strut, pinning and securing with the 'R' Clips.

**Step 30**



**Fig 3.** Final Position

The Platform is now Levelled by adjusting the Telescopic struts and pinning and securing with the 'R' Clips. **Fig 3.** See final positioning of the platforms.

**Step 31**



Fitting the Guardrail for the second platform follows the same path as the first. Position the Guardrail over your shoulder, when climbing the Ladder maintain three points of contact. **REMEMBER:** When fitting the Guardrail to the right hand side of the Platform carry up on the right shoulder and these steps are repeated for the Left side.

**Step 32**



Fit the Left hand guardrail into the two front sockets and gently ease the back of the Guardrail open.

**Step 33**



Fit the Right hand guardrail into the two front sockets and gently ease the back of the Guardrail open.

**Step 34**



Secure all the uprights in the locating sockets with the pins and 'R' Clips provided.

**Step 35**



Close the safety Draw bar and lock into position. Raise the Toe board across the Ladder access point to complete the assembly.

**Remember**

- Back legs must be fitted.
- All Ladders should be erected using 4:1 rule and tied off for maximum safety.
- Always assess the site for suitability. Spiking of the feet maybe required.
- Always Tie off the Bottom Platform
- Maximum Roof Pitch is 40 degrees
- Always tie off the Dec to the structure with a suitable anchor for the base material and make sure it is installed correctly as per manufacturer's instruction.
- It is important when handling the Easi-Dec products in elevated weather temperatures, that the appropriate PPE is used.

**Warning - Do Not step off the Platform onto the roof.**

**Dismantle:** Reverse the above assembly.