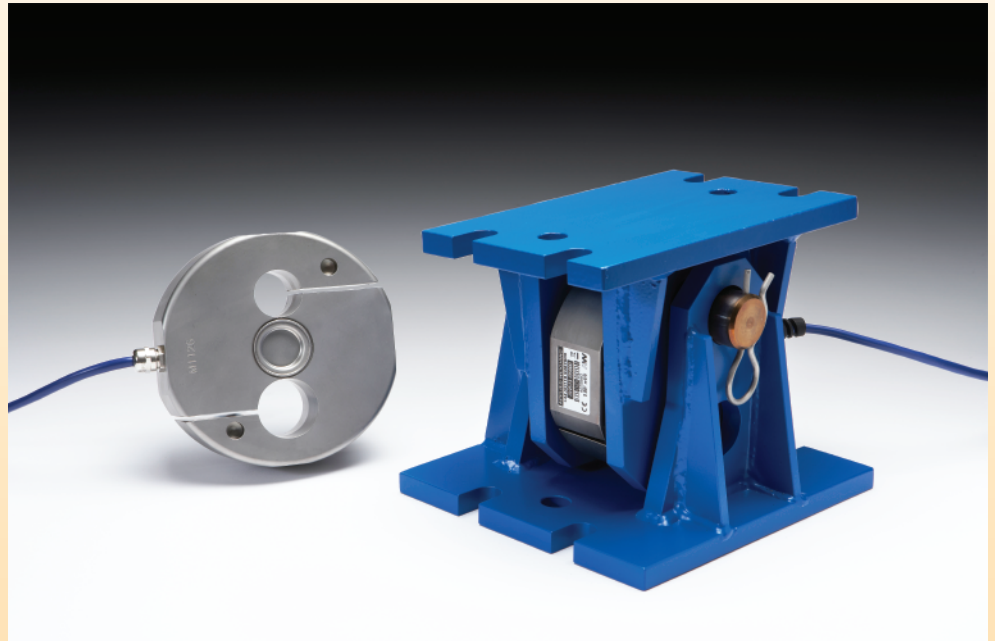




# Titan 95

## Range of Weighing Assemblies



upto  
IP68

### Features

- 2,000kg, 5,000kg and 10,000kg capacities.
- For Axle Weigh Bridges, Weigh Platforms, Tanks and Hopper weighing.
- Durable plastic coated mild steel loading assembly.
- Inbuilt strength - 150% maximum overload.
- Fully welded stainless steel (up to IP68).
- Designed and manufactured in the UK with a 5 year warranty.

### Options

- ATEX certified for Zone 0, 1, 2, 20, 21 and 22 Hazardous Areas.
- OIML C3 approval.
- Digital with RS485 ASCII, Modbus, CAN and CANopen outputs.
- High temperature up to 160°C.
- Stainless steel weighing assembly.
- Range of industrial instrumentation and weight controllers.

### Description

The Titan 95 range of load cells are designed for harsh industrial applications. Uses include Axle Weigh Bridges, Hopper, Tank and Platform Scales. The assembly will accept movement or misalignment.

# ENGINEERING SPECIFICATIONS

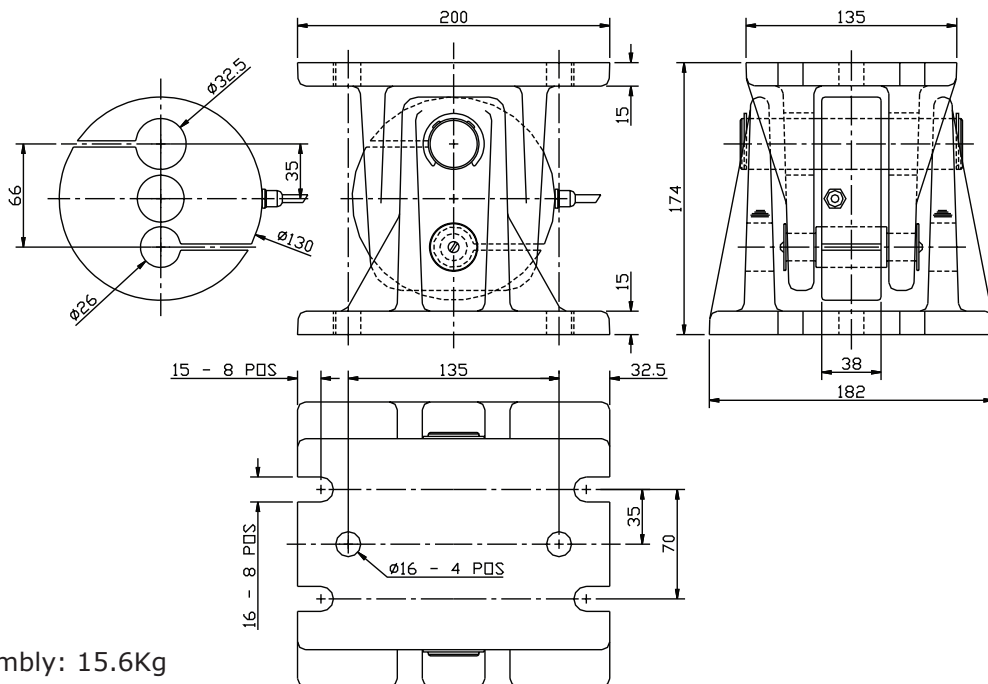
## TITAN 95 WEIGHING ASSEMBLY RANGE

### Specifications

Full Scale Output:	2.00mV/V Nominal	For ATEX Category 1 - Ⓔ II 1GD
Creep (in 20 minutes)	0.02% maximum	For ordering suffix the part number with 'X' i.e. AW513/0200X (see certificate BAS99ATEX2067)
Non-Linearity:	0.03% maximum	
Hysteresis:	0.05% maximum	
Non-Repeatability:	0.02% max	For ATEX Category 3 - Ⓔ II 3GD - note: stainless steel version only.
Compensated temperature range:	-10°C ...+40°C	For ordering suffix the part number with 'XD' i.e. AW513/0200XD (see certificate Baseefa09ATEX0147X)
Operating temperature range:	-40°C ...+80°C (-35°C...60°C for ATEX)	
Load cell material:	Stainless steel 17-4 PH	
Protection:	up to IP68 (ATEX IP66)	
Safe Overload:	150%	
Insulation Resistance:	2000 MΩ	Cable: 10 metres, 4 core screened.
Zero Balance:	1% F.S.	
Supply Voltage:	5-12 V (DC or AC) 15v	Colour code:
Max Voltage:	15V	RED +ve excitation    BLUE -ve excitation
Output Resistance:	350±5Ω	GREEN +ve signal    YELLOW -ve signal
Input Resistance:	380Ω±30Ω	

### 2,000Kg - 10,000Kg

Capacity	Plastic coated assembly & load cell	Stainless steel assembly & load cell	Stainless steel load cell only	Stainless dummy cell AW904/00005	Mild steel dummy cell AW904/00006	Pins & circlip set AW342/00002
2,000 kg	AW342/02000	AW344/02000	AW513/02000			
5,000 kg	AW342/05000	AW344/05000	AW513/05000			
10,000 kg	AW342/10000	AW344/10000	AW513/10000			
	<b>Assembly only</b> AW342/00000	<b>Assembly only</b> AW344/00000	10t High Impact AW513EH/10000			



**Weight**  
load cell: 3.7kg  
load cell with assembly: 15.6Kg

All dimensions in mm

Refer to installation documents before use.

In the interest of continued product development, Applied Weighing reserves the right to alter product specifications without prior notice. **APPLIED WEIGHING INTERNATIONAL LIMITED, Caversham, Reading, England RG4 5AF** 'Applied Weighing' and the 'AW' logo are registered trademarks of Applied Weighing International Limited.

Tel: (0118) 9461900 E-mail: sales@appliedweighing.co.uk www.appliedweighing.co.uk aw.co.uk DS 02852 issue 5