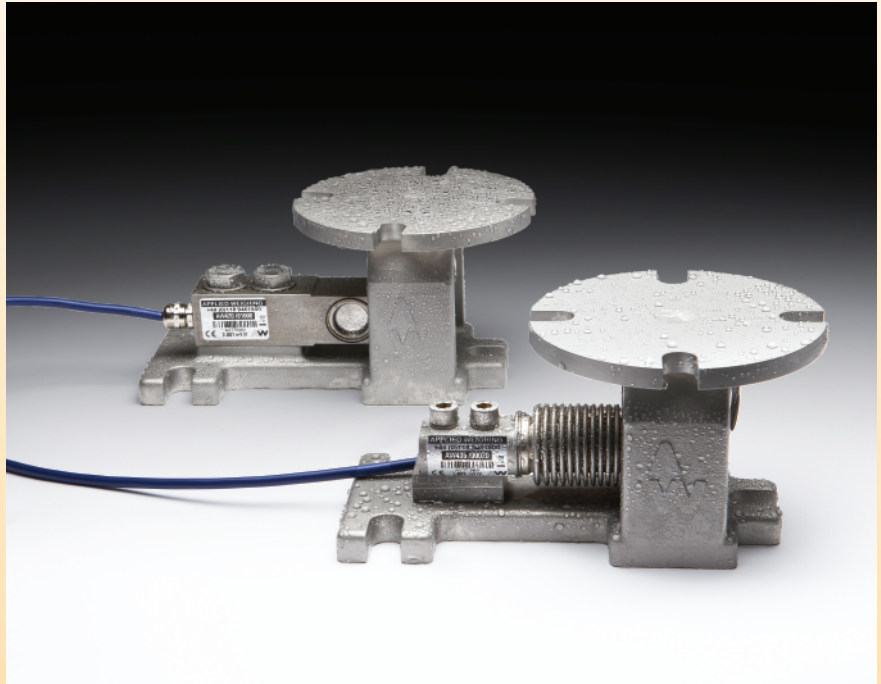




# Clevermount®

range of Weighing Assemblies.



## Features

- 20kg to 2,500kg capacities.
- For platform, hoppers, tanks and Silo weighing.
- Robust hygienic design for harsh industrial applications.
- Inbuilt strength - 150% maximum overload.
- Fully welded stainless steel loadcell (sealing upto IP68).
- Designed and manufactured in the UK with a 5 year warrantee.

## Options

- ATEX for Zone 0, 1, 2, 20, 21 and 22 hazardous areas.
- OIML C3 approval.
- Digital version with RS485 ASCII, Modbus, CAN and CANopen outputs.
- High temperature version up to 160°C.
- Range of industrial instrumentation and weight controllers.

## Description

The Clevermount is designed for harsh industrial weighing applications. It is ideally suited for weighing Vessels, Hoppers or Tanks where hygiene is a priority. The assembly ensure precise, reliable and safe operation. ATEX version is available for hazardous areas.

# ENGINEERING SPECIFICATIONS

## CLEVERMOUNT RANGE OF WEIGHING ASSEMBLIES

### Specifications

Full Scale Output:	2.00mV/V Nominal	For ATEX Category 1 - $\text{Ex}$ II 1GD
Creep (in 20 minutes)	0.02% maximum	Ex ia IIC T6 Ga (-35°C ≤ Ta ≤ +60°C)
Non-Linearity:	0.03% maximum	Ex ta IIIC T85°C T <sub>500</sub> 107°C Da IP66 (-35°C ≤ Ta ≤ 60°C)
Hysteresis:	0.05% maximum	For ordering suffix the part number with 'X' i.e.
Non-Repeatability:	0.02% max	AW350/0200X (see certificate BAS99ATEX2067)
Compensated temperature range:		250kg - 2,500kg assembly only.
-10°C ... +40°C		
Operating temperature range:		For ATEX Category 3 - $\text{Ex}$ II 3GD
-40°C ... +80°C (-35°C ... 60°C for ATEX)		Ex nA IIC T6 Gc (-35°C ≤ Ta ≤ +60°C)
Load cell material:	Stainless steel 17-4 PH	Ex tc IIIC T85°C Dc IP66 (-35°C ≤ Ta ≤ +60°C)
		For ordering suffix the part number with 'XD' i.e.
Protection:	up to IP68 (ATEX IP66)	AW350/0200XD (see certificate Baseefa09ATEX0147X)
Safe Overload:	150%	250kg - 2,500kg assembly only.
Insulation Resistance:	2000 MΩ	
Zero Balance:	1% F.S.	Cable: 6 metres, 4 core screened.
Supply Voltage:	5-12 V (DC or AC)	Colour code:
Max Voltage:	15V	RED +ve excitation    BLUE -ve excitation
		GREEN +ve signal    YELLOW -ve signal

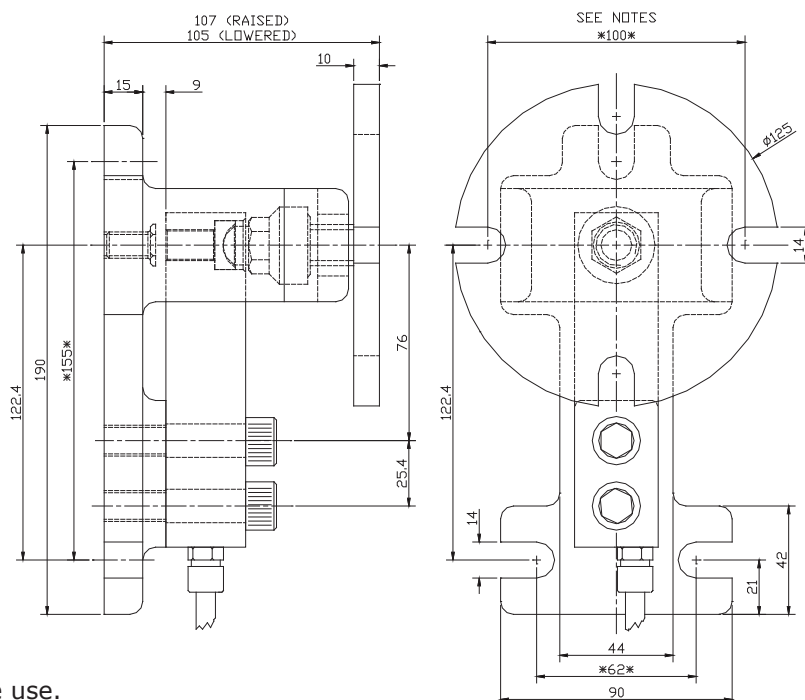
### 20Kg - 2,500Kg

Weighing Capacity	Clevermount assembly & Challenger loadcell	Weighing Capacity	Clevermount assembly & Ultra loadcell	Assembly & Ultra dummy loadcell
20 kg	AW350/00020	250 kg	AW350/00250	AW350/00000
50 kg	AW350/00050	500 kg	AW350/00500	
100 kg	AW350/00100	1,000 kg	AW350/01000	<b>Assembly &amp; Challenger dummy loadcell</b>
200 kg	AW350/00200	1,500 kg	AW350/01500	
		2,000 kg	AW350/02000	
		2,500 kg	AW350/02500	AW350/00002

Weight:

All dimensions in mm

Refer to installation documents before use.



In the interest of continued product development, Applied Weighing reserves the right to alter product specifications without prior notice. **APPLIED WEIGHING INTERNATIONAL LIMITED, Caversham, Reading, England RG4 5AF** 'Applied Weighing' 'Clevermount' and the 'AW' logo are registered trademarks of Applied Weighing International Ltd.

Tel: (0118) 9461900 E-mail: sales@appliedweighing.co.uk www.appliedweighing.co.uk aw.co.uk DS 02850 issue 3