

Teleonix 2

SECOND GENERATION
REMOTE MONITORING SYSTEM



Technical Specification

Housing

ABS with clear lid, 8 x M16 cable glands.
Sealing to IP65.

Display

Bright OLED 256 x 64 pixel display

Dimensions

229mm(W) x 245mm(H) x 120mm(D)
Mounting Holes 5.2mm (180mm x 180mm centres)

Weight

1800g

Supply Voltage

10 - 32VDC or 110/240VAC

Accuracy

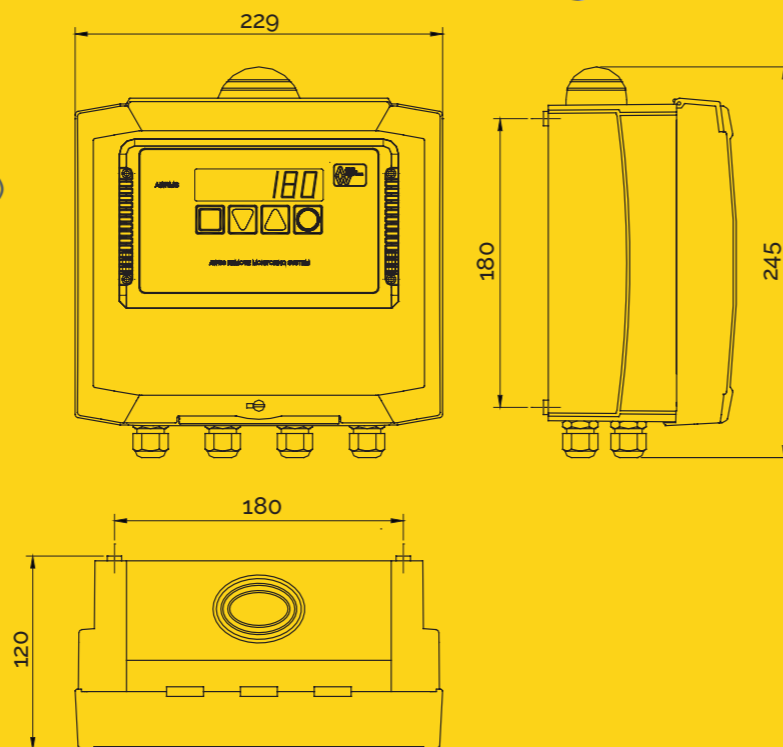
+/-50ppm/°C (-10°C to +50°C) Analogue input

Environmental conditions

-10°C to +50°C, storage: -40°C to +70°C

Inputs

- > 6 off configurable Isolated analogue input channels.
4-20mA, 0-20mA, 0-10VDC, 0-5VDC, +/-10VDC or +/-5VDC.
- > 1 off RS232
- > 1 off CAN BUS for connection of up to 8 Target 260 or Status 290 range of weighing instruments.



Part Number Description

AW180/00000	AW RMS Telemetry unit DC version
AW180/00001	AW RMS Telemetry unit AC version
AW180/00100	AW RMS SIM / DATA support



Teleonix 2

SECOND GENERATION
REMOTE MONITORING SYSTEM

The Teleonix 2 enables a client and/or their supplier to remotely monitor weighing systems or other measurement devices at one or numerous remote sites. The system can be configured so that the supplier can be automatically alerted to changes in content level for replenishment or stock control purposes by e mail.

The client and/or their supplier PC or mobile device shows a graphical representation of the weighing system, together with a map of the site location and the facility to download historic data for importing into spreadsheets or databases. The unit will accept up to 6 off configurable analogue inputs, RS232 and CAN BUS with the facility to expand this number if required.



To find out more about the benefits of Teleonix 2 please contact us on
+44 (0) 118 946 1900 or email: sales@appliedweighing.co.uk

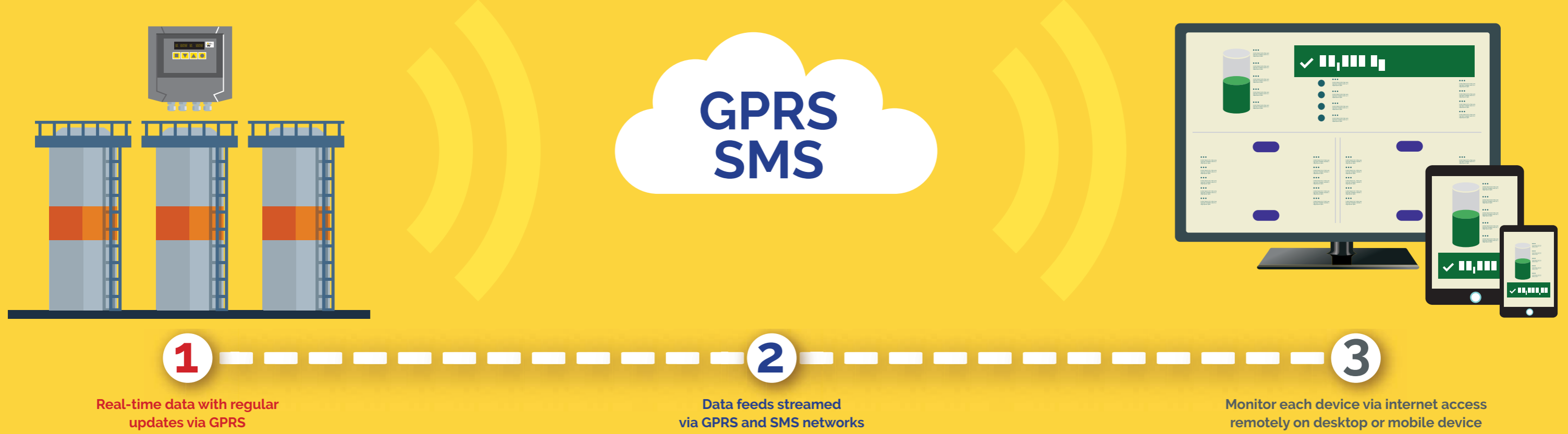


We exceed our customers expectations every time

Head Office: Applied Weighing International Limited
Southview Park, Marsack Street, Caversham, Reading RG4 5AF

www.appliedweighing.co.uk

How Teleonix 2 works



Key Features and Benefits of Teleonix 2

- > Remote monitoring of stock levels at any number of remote sites on the internet via the GPRS network
- > E mail alerts on pre-set silo weights
- > Historical data download as a .csv file
- > 6 configurable analogue input channels
- > CAN BUS interface - for direct connection to the Target 260 and Status 290 range of weighing instruments increasing accuracy by eliminating analogue signal losses
- > RS232 interface
- > GPS position location with map
- > ABS IP65 Enclosure
- > 110-240vac or 10-32vdc supply versions
- > Bright OLED display for content view or configuration

Load Cell Monitoring & Alerts

When your load cells are linked to the AW190 Intelligent load cell junction box and Target 260 or Status 290 weighing instrument, the Teleonix 2 web page will display the individual load cell status and will alert if a load cell fails or the signal is out of tolerance. It will instantly email any enabled users of the fault and which load cell it is that requires attention.

This enables the user to decide on immediate intervention, preventing a potential overflow or running out of material.

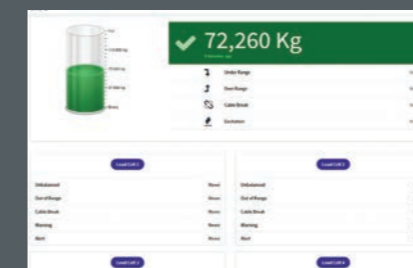
The alert can also be set to inform our support team that a site repair is required and if an on-site support package is in place, then a member of our team will schedule for an engineer to attend.

Individual load cells are monitored and an alert is transmitted for:

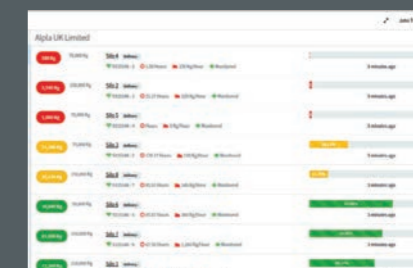
- > Any load cell signal is over its pre-set range
- > Any load cell signal is under its pre-set range
- > Any load cell signal is out of % balance compared to the other load cells
- > Any load cell cable break

Via the web page, the user has an overview showing all devices and can view detailed information and analysis of levels, alerts and selectable, historical graphical trends.

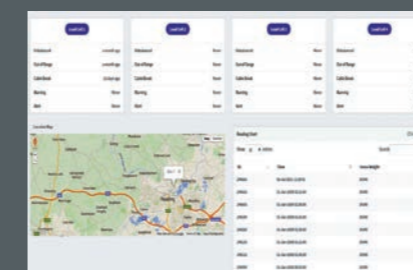
Data can be exported into spreadsheets or databases such as Excel or Access.



Continuous data and fault monitoring



Client Site Overview



GPS location with mapping facility



Historic data view with .csv download facility

A modern and intuitive website with added features:

- > Displays the current usage rate of each silo (TPH)
- > Displays the calculated time to low weight (using the usage rate and the preset low weight value)
- > Enhanced Graphical tracking
- > User ability to edit data such as low level / reorder level / urgent level / silo contents name

Some of the companies using AW telemetry systems

